



PRINCES HIGHWAY EAST

DECEMBER 2021

Managing vibration, noise and dust

We're minimising construction impacts on local communities and the environment.

The third and final stage of the Princes Highway East Upgrade will deliver an extra 12 kilometres of lanes in each direction through Flynn, Kilmany and Kilmany East, providing a consistent two-lane highway between Traralgon and Sale.

Construction projects of this scale sometimes involve noisy and disruptive activities. We're committed to minimising the impact of our works on the community and the environment by managing noise and vibration during works.

Managing noise

Local residents can expect to experience some noise and vibration as works take place on the Princes Highway East Upgrade. Common sources of noise include machinery such as excavators and graders, piling rigs, trucks delivering and transferring materials, generators and power tools.

The level of noise during construction will vary depending on the type of activity being undertaken. We'll minimise these impacts on the local community by:

- scheduling noisy activities during day-time working hours, whenever possible
- providing local residents with advance notice about any out of hours work

- fitting machinery with engine noise reduction equipment where possible
- fitting smart movement alarms to vehicles, which are quieter than standard reversing alarms
- targeted noise monitoring during out of hours work.

Most works will be performed during the day between 7am to 6pm, Monday to Friday and 7am to 1pm on Saturdays.

If works need to be undertaken at night to minimise impacts on traffic or utility services, we'll let local residents know in advance and make all reasonable efforts to reduce noise as much as possible.



SIGN UP FOR PROJECT UPDATES
roadprojects.vic.gov.au

Authorised by the Victorian Government, 1 Treasury Place, Melbourne



Managing vibration

If you live or work near one of our construction sites, you may feel some vibration in your home or office. Vibration that you feel is usually well below the levels that may cause changes in the condition of your property.

Our construction methods have been developed to minimise ground vibration. If you do feel vibration in your home and would like to discuss this with a member of our team, please phone us on **1800 105 105** while the vibration is occurring. We'll provide you with more information about the works we're doing and determine whether we can make some changes to minimise your discomfort.

We conduct background vibration monitoring before works start and continue monitoring during the works. By monitoring vibration levels during our works, we ensure that we're continually under the prescribed limits.

Air quality

We're committed to minimising any temporary air quality impacts on the nearby community which may be caused by:

- dust events or emissions from earth moving works and construction activities
- fuel/diesel combustion of construction machinery
- dust or emissions from operational maintenance activities.

We'll carry out all work in accordance with relevant air quality legislation and guidelines, and regularly monitor and control dust and emissions by:

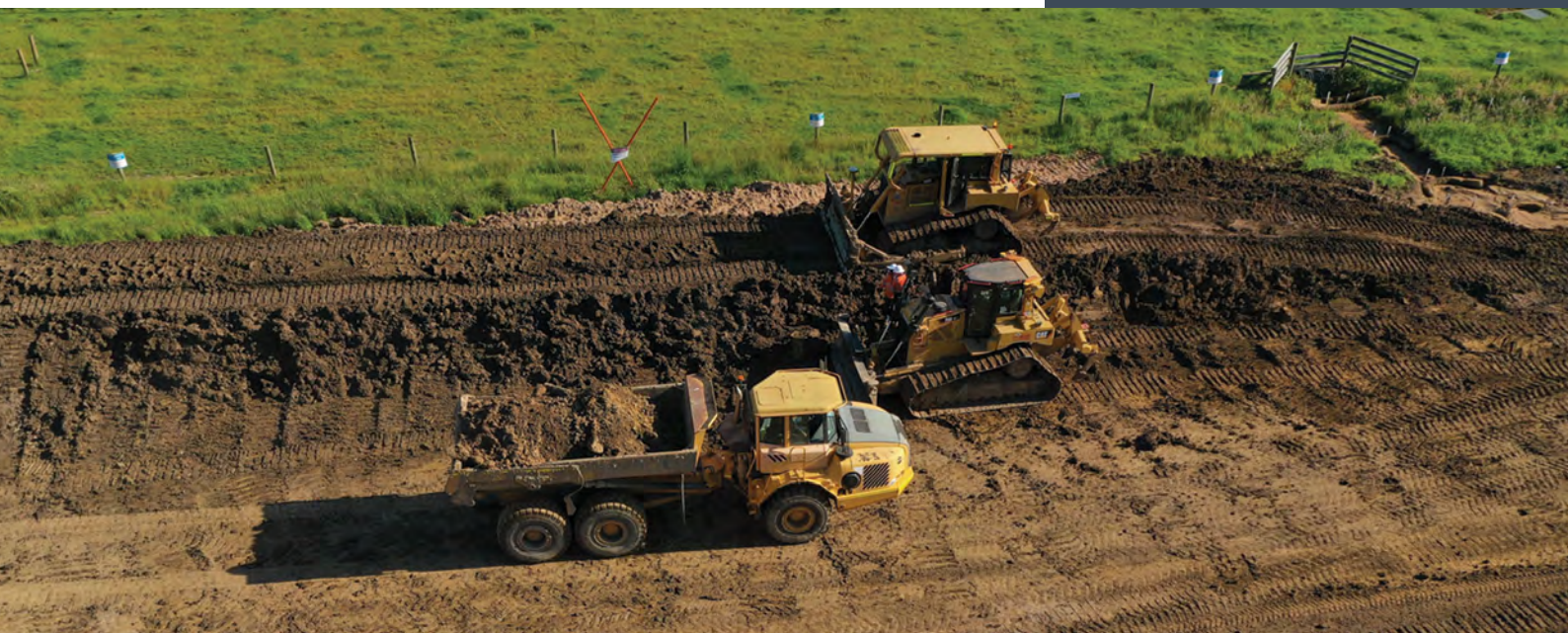
- using water carts for suppression of dust
- monitoring potential dust generation from dry and windy weather conditions, and in response to site inspection or complaints related to air and/or dust disruption
- covering stockpiles or using wet suppression and wind speed reduction to control exposed dust sources
- conducting regular testing
- ensuring all vehicles and machinery are fitted with appropriate emission control equipment, maintained frequently and serviced to the manufacturers' specifications.

Property condition surveys

Before we commenced works, a qualified independent specialist was engaged to conduct a complimentary property condition survey on buildings located in close proximity to major construction activities. While our construction methods are designed to minimise impacts on nearby properties, we offer this service to provide you with a worthwhile reference document in the unlikely event of any accidental property damage.

Property condition surveys have been undertaken in Victoria for many years and document the condition of a property either prior to construction commencing or at a subsequent point in time. It provides a reference should you believe your property has experienced any adverse effects from construction works.

If you receive a letter regarding a property condition survey, please complete the Survey Permission to Proceed form included with your letter and return it at your earliest convenience. If you have not received a letter and believe you are eligible, please phone us on **1800 105 105** or contact us via roadprojects.vic.gov.au.



Contact us

contact@roadprojects.vic.gov.au
1800 105 105

Major Road Projects Victoria
GPO Box 4509, Melbourne VIC 3001

Follow us on social media

     @roadprojectsvic



For languages other than English,
please call 9209 0147

Please contact us if you would like this
information in an accessible format

If you need assistance because of a hearing or
speech impairment, please visit relayservice.gov.au