



WEBB STREET, NARRE WARREN CONSULTATION REPORT

2022



Contents

PROJECT OVERVIEW	3
SELECTING THE BEST DESIGN	4
GATHERING YOUR FEEDBACK	5
WHAT WE HEARD	6
ABOUT YOU	6
MOVING AROUND THE AREA	7
WHAT'S IMPORTANT TO YOU	8
LOOK AND FEEL	9
KEY THEMES FROM YOUR FEEDBACK	10
NEXT STEPS	11
PROJECT TIMELINE	11



Artist impression, subject to change.



Boom gates down at Webb Street, Narre Warren.

PROJECT OVERVIEW

As part of the Victorian Government's commitment to removing 85 dangerous and congested level crossings, we're removing the level crossing at Webb Street, Narre Warren.

The Webb Street level crossing removal is part of a \$15 billion investment to upgrade the Pakenham Line, which will be boom gate free by 2025.

We'll remove the level crossing by building a new elevated rail bridge over Webb Street. We'll also build a new Narre Warren Station, with modern facilities for the community.

Elevating the rail line will relieve congestion on Webb Street, making it safer and easier for drivers, pedestrians and cyclists to move around.

Removing the Webb Street crossing will help create a level crossing free Pakenham Line, which will change how locals live, work and travel by delivering a safer and more reliable road network, better connections and improved travel times.

Construction is scheduled to start in late 2022 and the level crossing will be removed by 2025.



Why the level crossing needs to go



19 near miss incidents have been recorded at the level crossing since 2012.



The boom gates can be down for up to **40 minutes** of the morning peak when up to 25 trains pass through the crossing every day.



Delays for about **13,200 vehicles** that pass through the crossing each day.



*Elevated rail bridge over Webb Street.
Artist impression, subject to change.*

SELECTING THE BEST DESIGN

The design for the Webb Street rail bridge and new Narre Warren Station takes into consideration the area's unique set of characteristics, opportunities and limitations.

We have undertaken technical investigations and considered environmental and community factors to develop the best solution for the area.

The elevated rail bridge over the road design in this location will reduce rail and road disruptions and construction impacts to residents and businesses during the works.

The new Narre Warren Station will have elevated platforms, which commuters will be able to access via lifts and stairs. The two new platforms will feature shelter and lighting.

The project design will improve connections within the Narre Warren precinct by featuring more integrated transport connections and improved public space.

Project benefits



Improved safety and connections for road users, pedestrians, and bike riders.



Easing congestion and slashing travel times for the 13,200 vehicles that pass through the crossing each day.



New modern facilities at Narre Warren Station.



Making way for more trains to run more often.



Making it easier for people to move around the area.



Stimulate economic growth by creating hundreds of jobs.



Project signage and information at Narre Warren Station in March 2022.

GATHERING YOUR FEEDBACK

We engaged with the community and key stakeholders, seeking feedback on the early concept designs, what you value about the local area and how you move around Narre Warren.

The project was open for community consultation from Friday 4 March until Sunday 27 March 2022. Feedback was collected via an online survey on the Engage Victoria website and virtual information sessions in response to coronavirus restrictions. Printed surveys with a reply paid envelope were available by request.

The online survey was also available in Dari and Sinhalese.

Your responses have helped us understand local impacts, your vision for the area and have informed our planning approval process.

The feedback we received will be used to further develop the final designs for the station precinct.

Your feedback

There was a high level of community interest in the consultation.

- **81 people** provided their feedback online, including two submissions in Sinhalese
- **3,538 individual pieces of feedback** were received from the community
- **85 questions** were submitted via the 'Ask Us' function on the Engage Victoria project page and social media

1,630



visits to our Engage Victoria project page

90+

local businesses engaged online and face to face



More than **92,000** people viewed social media content about the community consultation



10,000



Community Updates sent to local households

2,800+

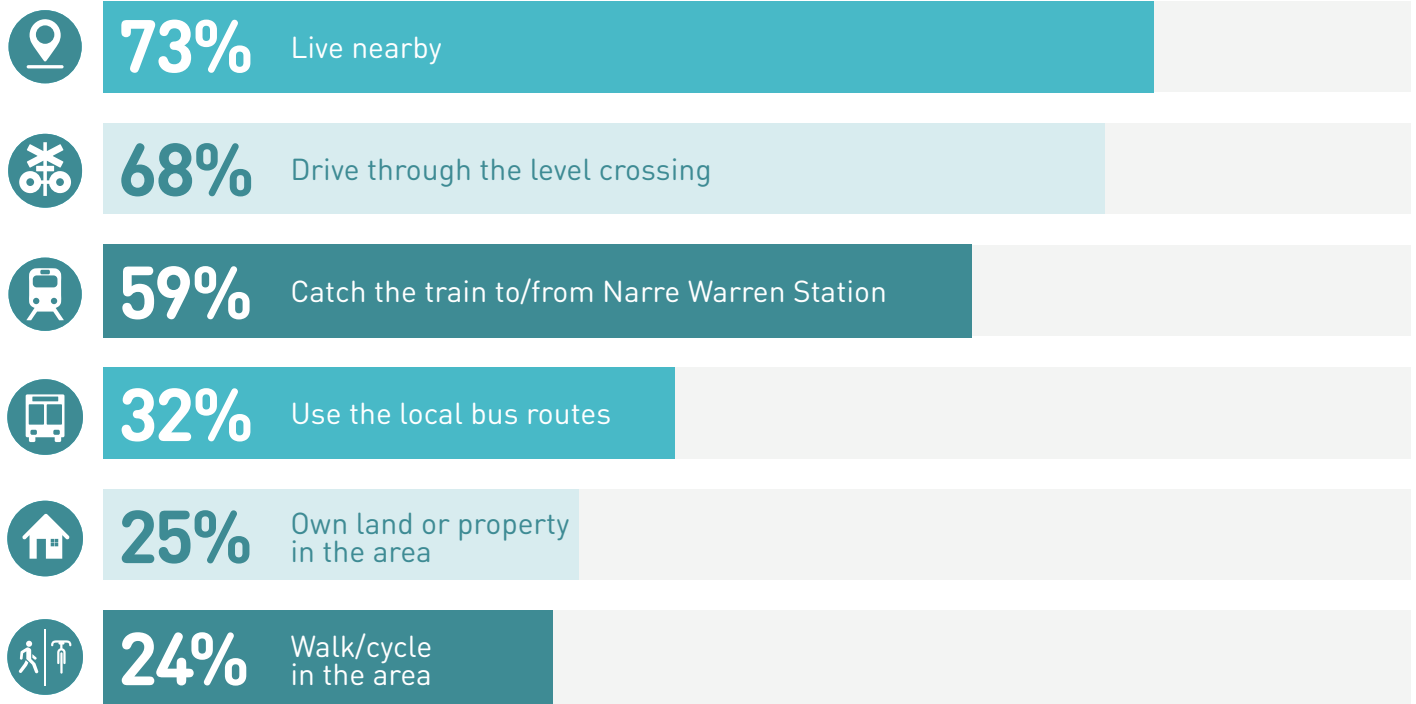


subscribers received project email updates

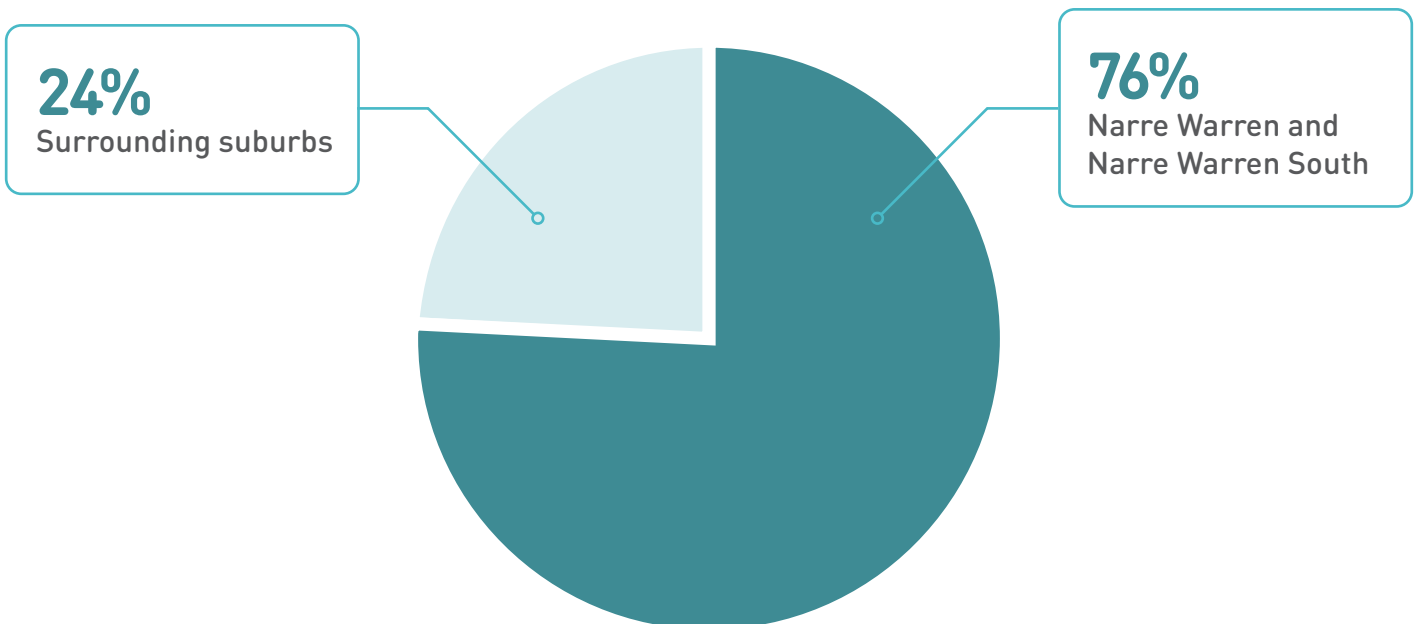
WHAT WE HEARD

We asked you to share your preferences, insights and feedback on the project.

About You



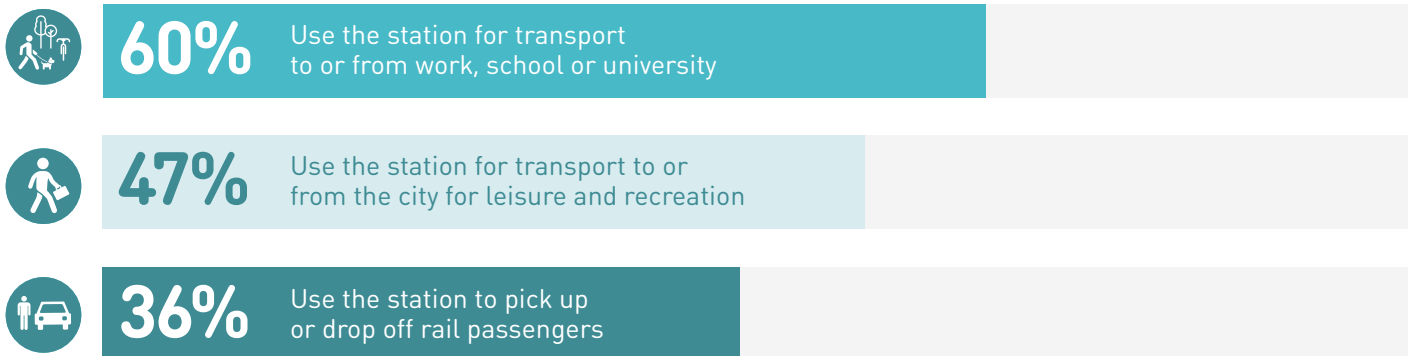
Where you live



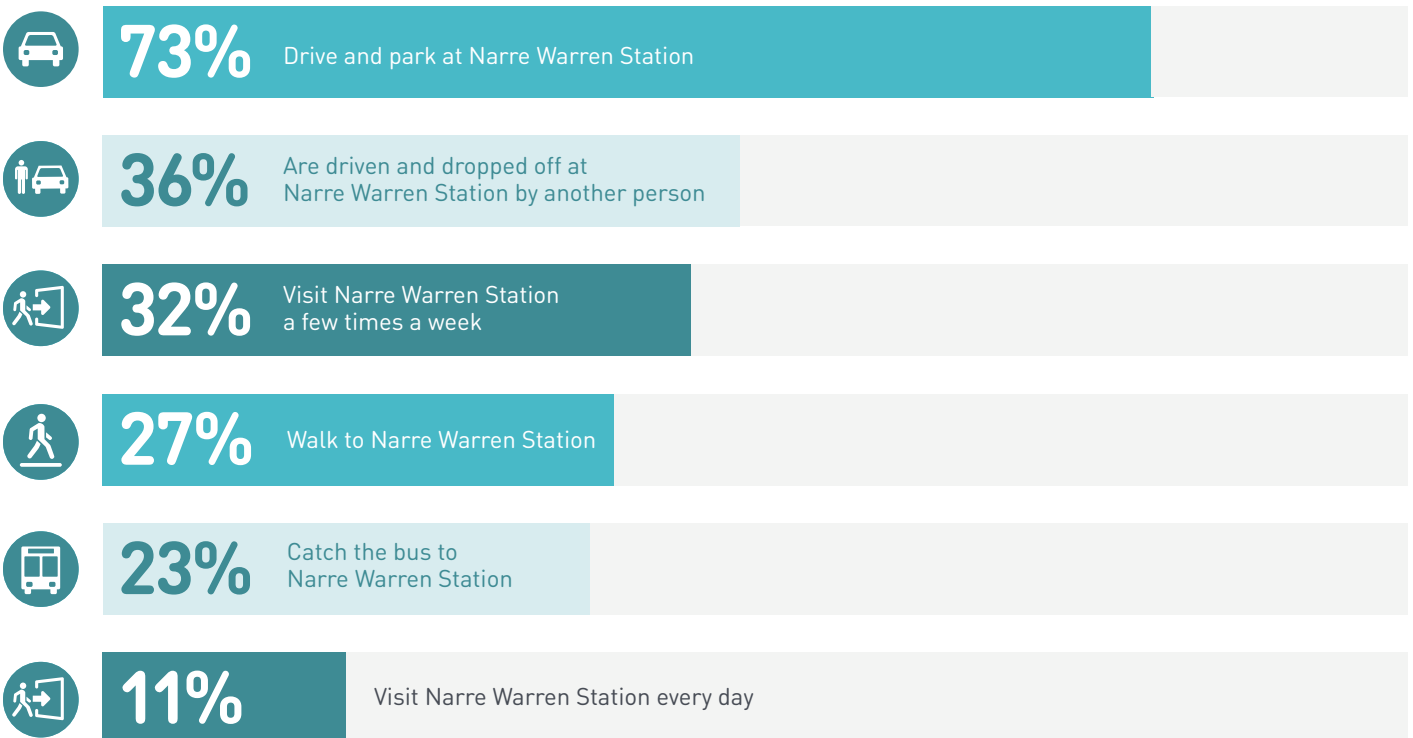
These figures represent the percentage of respondents that provided feedback online.

MOVING AROUND THE AREA

How you use Narre Warren Station



How you travel to Narre Warren Station



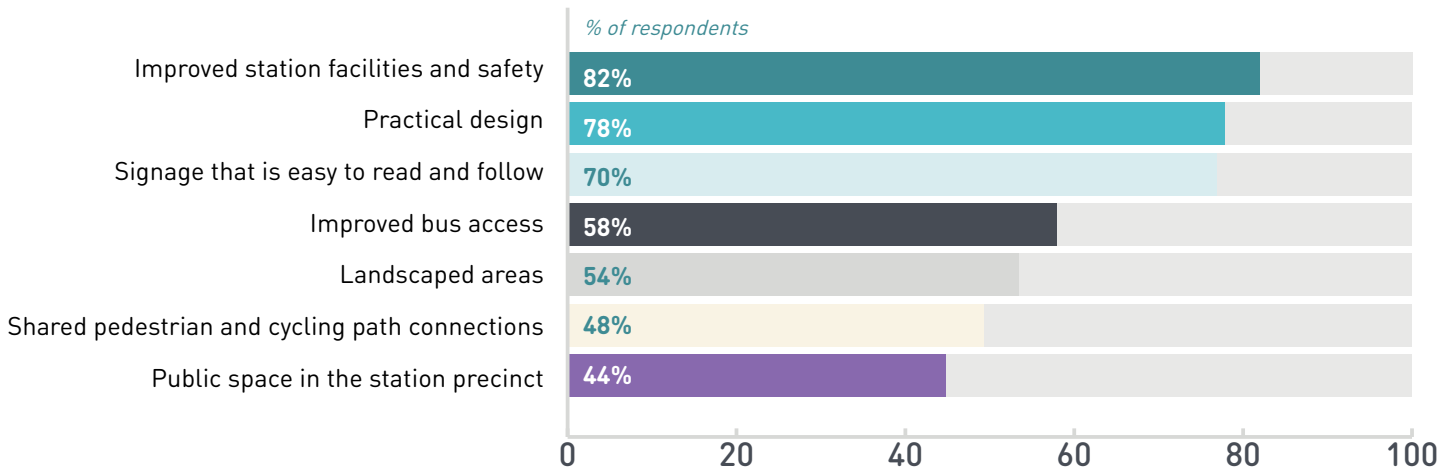
These figures represent the percentage of respondents that provided feedback online.

WHAT'S IMPORTANT TO YOU

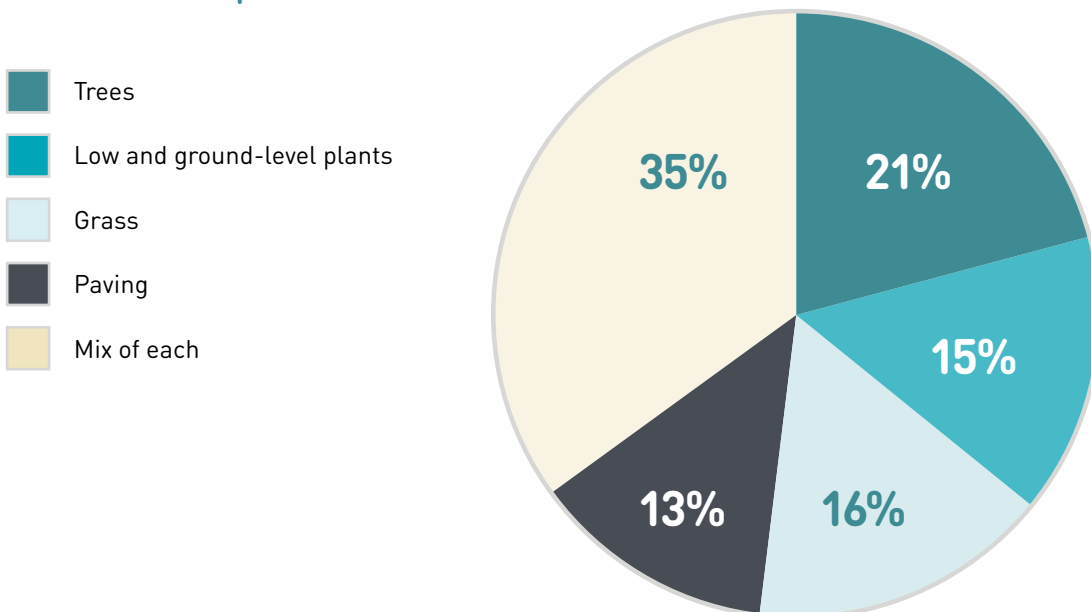
Improvements to Narre Warren Station

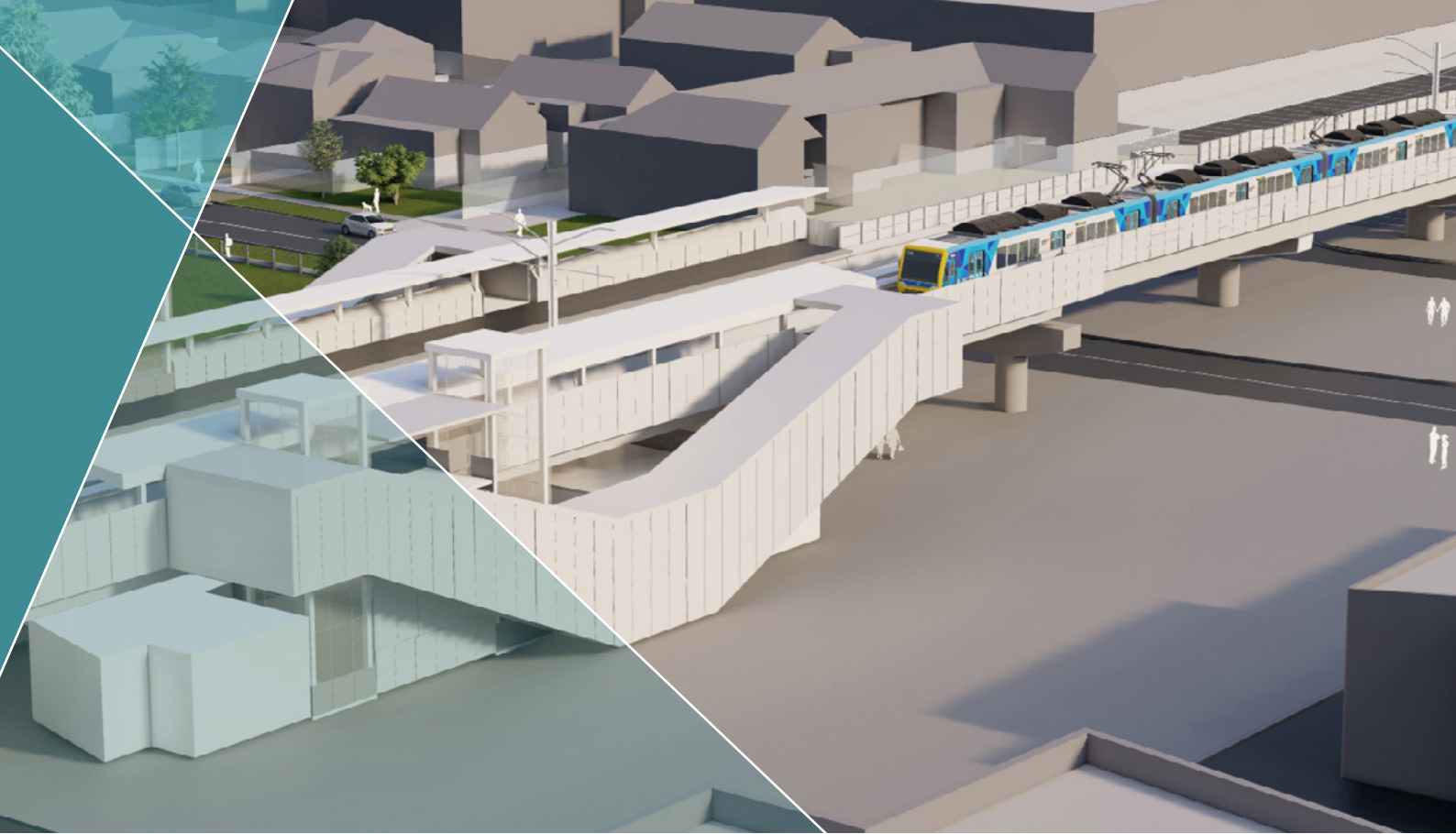
We asked you what you would like to see as part of the new Narre Warren Station and surrounding precinct.

What you ranked highly as preferred elements for the new Narre Warren Station



How you want the public space around the new Narre Warren Station to be landscaped





*Elevated rail bridge over Webb Street.
Artist impression, subject to change.*

LOOK AND FEEL

We asked you to select images that reflect your preferences for the look and feel of the new Narre Warren Station design.

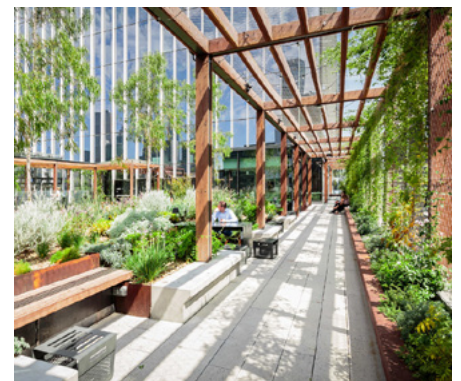
The images below were the most preferred, with the majority of respondents selecting images with greenery, open space, shade and seating.



"Seating areas for people to come together and hang out."



"Greenery around the base and outlying areas with clean lines and elements of nature."



"Open, natural spaces. A transition away from plain concrete and straight lines to timber, greenery, and organic guiding lines."

KEY THEMES FROM YOUR FEEDBACK

Disruptions and construction impacts

Some of you raised concerns about the travel disruptions on road and rail as a result of not only the Webb Street level crossing removal but also other projects in the area.

We'll provide you with timely updates about the project's construction activities and potential impacts. We'll also work with the other Victoria's Big Build projects to provide you with regular project updates about what is happening in your area.

Greenery

You told us you would like the station design to include more greenery and garden spaces.

The designs for the new Narre Warren Station precinct will include landscaping.

Modernising the station precinct

You told us that you wanted Narre Warren Station to have a clean and modern design to make the area more inviting.

The new Narre Warren Station and rail bridge over Webb Street is a modern design with upgraded facilities for community use.

Parking

You told us that you wanted improved car parking facilities in the station precinct.

The design will have no net loss of car parking at Narre Warren Station and the car park will be resurfaced.

Passenger facilities

You told us the current station is exposed to the elements and needs better shelter and signage.

The new Narre Warren Station will have improved weather protection, including shelter. There will be new signage to ensure you get to where you need to go, including digital screens for train departure times.

Pedestrian movements

You told us that pedestrians do not cross the road at the existing pedestrian crossing. This causes congestion and safety concerns for both the pedestrians and drivers.

We are continuing to investigate the most effective and safest place for pedestrians to cross Webb Street and will have more information for the community later this year. Improved pedestrian connections are an important aspect of the project design.

Rail-bus connections

You asked us to improve the rail and bus connections on Webb Street.

The new station precinct will focus on improving train and bus connections while also focusing on local amenity and safety.

Safety

You told us you wanted the new Narre Warren Station, and car parks to be safe.

The final design will include lighting within Narre Warren Station including on platforms, entrances, underneath the station and elevated rail bridge and in the car park. The station precinct will also have CCTV and passive surveillance from paths and the road. The design will consider CPTED (Crime Prevention Through Environmental Design) guidelines.

Station access

You asked us to consider providing access to Narre Warren Station from both sides of Webb Street.

We are refining the station design to make it as passenger friendly as possible, while meeting the requirements of Metro Trains Melbourne (MTM), the train operator and the Department of Transport.



NEXT STEPS

Thank you to everyone who provided feedback.

We will use your feedback to help further develop the designs for the project.

Later this year, we'll present the final designs to the community and talk to you about construction of the rail bridge and new station.

Connect with us

Be the first to know about updates on the Webb Street level crossing removal by signing up to email updates.

Subscribe to email updates at levelcrossings.vic.gov.au/subscribe

Visit levelcrossings.vic.gov.au for more project information

Connect with us on social media @levelcrossings



Translation service – For languages other than English, please call 9209 0147.

Please contact us if you would like this information in an accessible format.

If you need assistance because of a hearing or speech impairment, please visit relayservice.gov.au

Project timeline

- ✓ **2021 – early 2022**
 - Early investigations
- ✓ **Early 2022**
 - Design solution confirmed
 - Site investigations continue
 - Concept designs released and community engagement
- **Mid 2022**
 - Final designs released
- **Late 2022**
 - Major construction starts
- **2025**
 - Level crossing removed

**Timeline above subject to change*

CONTACT US

contact@levelcrossings.vic.gov.au
1800 105 105

Level Crossing Removal Project
GPO Box 2392, Melbourne VIC 3001

Follow us on social media
[@levelcrossings](#)



Translation service – For languages other than English, please call 9209 0147.

Please contact us if you would like this information in an accessible format.

If you need assistance because of a hearing or speech impairment, please visit relayservice.gov.au