



LEVEL CROSSING REMOVAL PROJECT



Artists impression of the new Glenhuntly station precinct, coming 2023. Subject to change.

LEVEL CROSSINGS PROJECT UPDATE

NEERIM ROAD AND
GLEN HUNTLY ROAD,
GLEN HUNTLY
ISSUE #6 – JULY 2022

We're ready for works this winter

The Victorian Government is investing more than \$4 billion on the Frankston line to remove 20 dangerous and congested level crossings, build 13 new stations and increase safety, reduce congestion, and run more trains, more often.

We have a big year ahead in Glen Huntly, with early works well underway to remove the level crossings at **Neerim Road** and **Glen Huntly Road** by lowering the rail line into a one-kilometre trench. We will also build

a brand-new Glenhuntly Station with better facilities and more services set to open in 2023 – one year ahead of schedule.

Inspired by local architecture, the new station and its forecourt will feature brick, bluestone and light coloured granite complete with landscaping and seating. The precinct will include a new tram stop out front, creating new open space and providing the community with better and safer connections to public transport.

By 2023, the Frankston line will be level crossing free between the city to Moorabbin – allowing more trains to run more often, and improving safety for tens of thousands of passengers, drivers, cyclists and pedestrians each day.

Why these level crossings need to go

- 20,000 vehicles travel through these crossings each weekday
- 200 passenger trains use the Frankston line daily
- Boom gates down for almost 60 minutes during morning and afternoon peak
- 3000 people use Glenhuntly Station each day



SIGN UP FOR PROJECT UPDATES
levelcrossings.vic.gov.au



Workers in the rail corridor in February.



What's coming up this winter

Works started in February and will continue over the coming months.

We have a lot happening on the ground as crews continue to deliver piling, utilities and relocate drainage along the rail corridor. Night works, including 24-hour rail and road disruptions, are needed to safely complete critical works while trains aren't running.

Later this month crews will work 24/7 along the rail corridor from 9pm Thursday 30 June to 3am Friday 8 July, in both Glen Huntly and Caulfield East.

- During this time buses will replace trains between Caulfield and Mordialloc and between Frankston and Stony Point **from Friday 1 July to last service Thursday 7 July.**
- Buses will replace trams on Route 67 from Stop 53 Glenhuntly Tram Depot and Stop 68 Carnegie Road **from first tram Friday 1 July to last tram Thursday 7 July.**

The Frankston line will also have temporary timetable changes **from Friday 8 July to late August.**

For more information, visit ptv.vic.gov.au/disruptions/frankstondisruptions/ or call 1800 800 007.

How we help you get from A to B

We work closely with Metro Trains Melbourne and Yarra Trams to help you manage changes to how you travel.

The removal of the level crossings at Neerim Road and Glen Huntly Road is a complex task.

In contrast to most level crossing removal projects, Glen Huntly involves both trains and trams, and as such, requires a team effort to ensure your journey continues smoothly in times of disruption.

Prior to our first road, rail and tram closure in February, we worked hard to help minimise disruption to passengers.

To create positive passenger experiences, our teams communicated impacts via wayfinding signage around the disruption zone, bus flags, tram hangers, digital messaging and onboard announcements.

Our friendly customer service staff were also on hand to redirect commuters and keep them informed of travel changes.

As we ramp up works to remove two more level crossings for good, we'll make sure to give you as much notice as possible so you can plan your journey.



Date palms removed for now

Want to know more about how your palms go 'on holiday' for the duration of the works?

The factsheet includes information on how we temporarily relocate these giants and where we've done this before.

You can find the factsheet by searching 'Date palm factsheet' at levelcrossings.vic.gov.au or by scanning the QR code.



WHAT IS PILING?

Establishing solid foundations for retaining walls requires careful preparation before we build the rail trench.

In May 2022 we began work known as piling, and these works will continue until mid-2023.

Before we start building the rail trench it is essential that we establish a solid foundation for retaining walls, roads and station structures. Using a piling rig weighing 110 tonnes, holes are dug and filled to create secure foundations, to allow us to safely build the rail trench and new station.

There are various piling methods used depending on the construction methodology, geotechnical conditions and engineering advice.

In Glen Huntly, the technique we're using is continuous flight auger piling. This type of piling is known to have the least impact as it generates less vibration with moderate noise.

A pile is formed when a piling rig drills circular holes into the ground using the auger - a corkscrew shaped drill. The holes are then backfilled with concrete and reinforced with a steel cage to set and secure the pile before moving on to the next location along the rail alignment. These will eventually form the piles for the walls of the trench.

In total, we'll install around 3000 piles along a 1km section of rail corridor

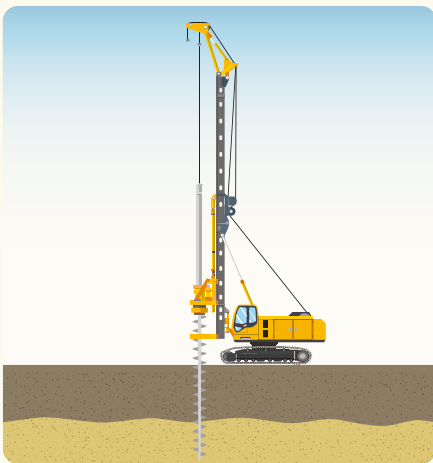
between Lord Street and Hawson Avenue. These piles will range in depths from nine to 18 metres and diameters of .7 to 1.2 metres.

Although the piles won't be visible until major trenching takes place, they play an integral role in ensuring the walls that surround the rail infrastructure are solid and secure.

To learn more, scan the QR code to read our factsheet.



A step-by-step guide to piling



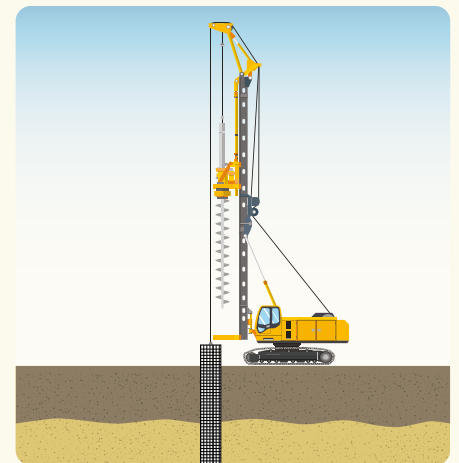
Drilling the hole

Drilling circular holes as deep as 15 metres in the ground along a certain length of area.



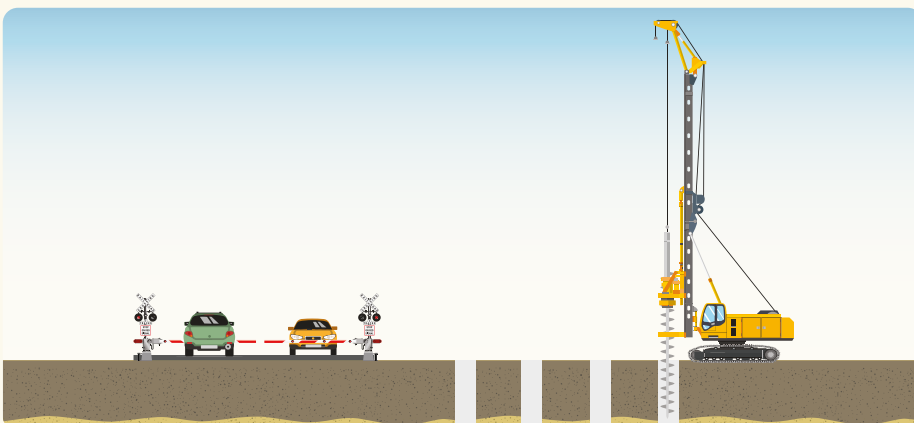
Concrete backfill

Concrete is pumped into the hole through the hollow part of the auger to form the pile.



Steel reinforcement

A cylindrical, steel cage is lowered into the hole to secure and reinforce the pile.



Repeat

This process will continue along the rail alignment until we reach a total of over 3000 piles.

BAKING GLEN HUNTLY A BETTER PLACE

With their delicious bread and baked goods, TL Bakehouse has been keeping Glen Huntly well-fed since 2006.

Meet Tam and Leo Dinh, the owners of their namesake bakery on Glen Huntly Road in Glen Huntly.

From humble beginnings selling bread in Vietnam, Tam's parents immigrated to Australia in the 1990s. After opening a bakery on Koornang Road in Carnegie, Tam's mother Tina passed down her entrepreneurial spirit to her daughter, who worked there after school and on weekends.

Tam went on to study international trade and after graduation, felt the desire to rejoin the family trade.

Tam's passion and her genuine love for her business is obvious, and translates into every pastry, roll, or fan-favourite house-made Banh Mi, that leaves their store.

"Tam loves learning the names of people and their orders. When locals come in for their regular orders, she knows all their names without seeing their faces," said Tina.

TL Bakehouse is located right near the level crossing removal works taking place in Glen Huntly. Tam and Leo love living locally and are excited about what the project will do for the community.

"The communication with LXP has been excellent from day one. We have been updated on so many things, ahead of it happening. The workers have all been really nice, down to earth people and I've gotten to know a lot of their names too," said Tam.

The future is looking bright for these bakers, who are excited to see Glen Huntly boom-gate free by 2023.

You can pay Tam and Leo a visit at 1130 Glen Huntly Road, Glen Huntly.



Tam, the owner of TL Bakehouse, pictured with her mother Tina.

What to expect during construction

As with any other major infrastructure project, there will be times when our work activities will impact residents and businesses close to the project.

We work hard to keep the community informed about upcoming works and disruptions. This includes written notifications, SMS updates, email updates, signage and advertising.

Throughout construction, there may be times when we:

- work at night in some locations
- close roads, footpaths and car parks
- temporarily change the way you move around the area
- cause increased noise, dust and vibration
- have an increased worker presence on site.

We thank the community for your ongoing patience.

To find out more about how to stay up to date, check out the back page.

This includes:

- night works in some locations
- increased truck movement and material deliveries
- rail, road and car park impacts
- changes to the way you move around the area, with traffic management in place during disruptive works
- removal of some vegetation around the rail corridor to make way for construction
- increased noise, dust and vibration.

Detours will be in place and some delays are expected so drivers are encouraged to plan ahead and allow extra travel time.

We work hard to reduce the impacts of our construction works and thank the community for their patience.

To learn more, scan the QR code to read our factsheet.



Artists impression of the new Glenhuntly station precinct, coming in 2023. Subject to change.



Here's a snapshot of our progress so far

01

During May the first of the pilings rigs mobilised on to site, just near Neerim Road.

02

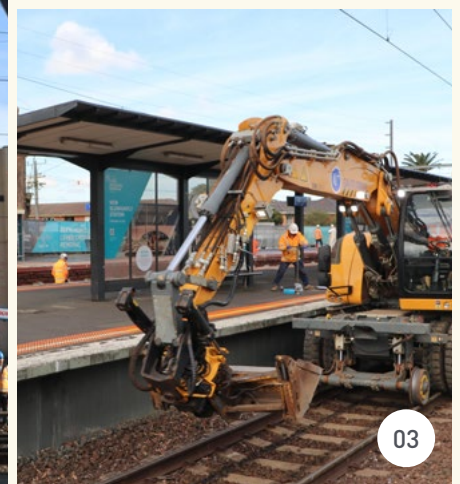
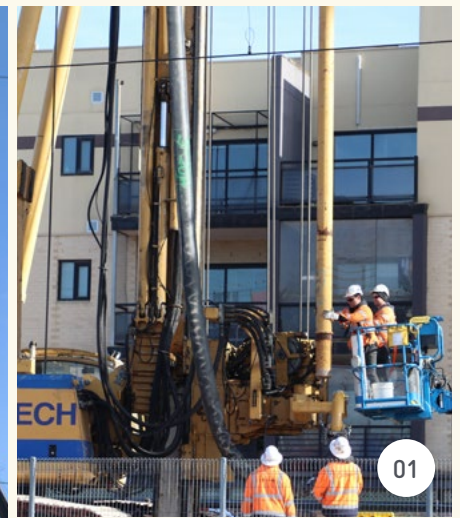
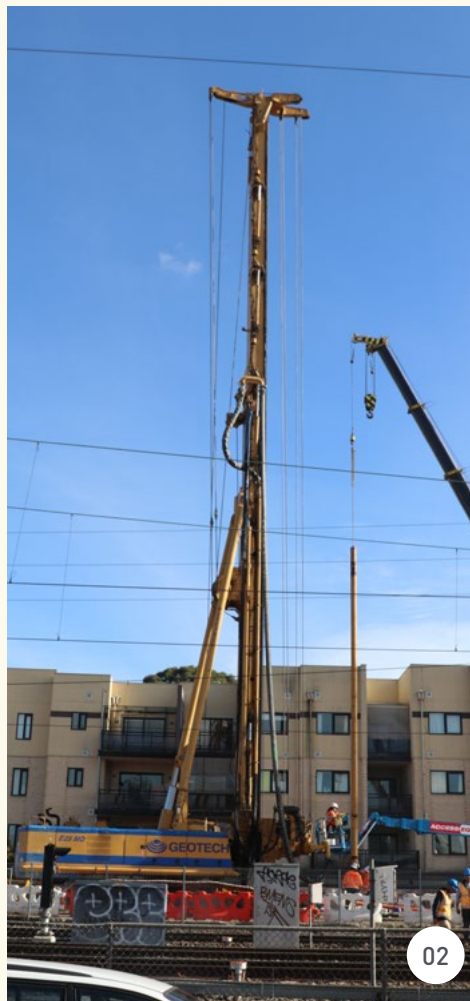
Our team get to work, installing a package of 3000 piles.

03

A high rail excavator, that assisted in ensuring that the track is reinstated in step with the safe operational standards issued by Metro Trains Melbourne.

04

A glimpse down the rail corridor.



How deep do we dig into the ground to make our piles?

18–27m deep, which is the height of a 6 storey building!

04

Thank you for Going Local

While works take place in Glen Huntly your local shops continue to operate as normal and thank you for your ongoing support.

Shops will be open as usual and despite project-related disruptions, you'll still be able to get where you need to go.

Watch this space as we work closely with local traders to bring you lots of exciting news and opportunities during major works.



Stay informed

- Sign up for email updates at levelcrossings.vic.gov.au/subscribe or by scanning the QR code
- To sign up for SMS alerts, text **GH** to **0429 839 892** to keep informed of major traffic and construction impacts
- Call us on **1800 105 105** or email contact@levelcrossings.vic.gov.au 24 hours a day
- Send us a private message on the Level Crossings Removal Project Facebook page



Project timeline

- ✓ **Late 2021**
 - Finalise project design
 - Ongoing site investigations
- ✓ **Early to mid 2022**
 - Site office establishment
 - Vegetation removal
 - Service and utility works continue
 - Station car park closures
 - Piling works begin
 - Community information sessions
 - Walking tours
- **Mid to late 2022**
 - Major construction begins
- **2023**
 - Boom gates removed
- **2024**
 - Project completed

Timeline above is subject to change.

Artists impression of the new Glenhuntly station, coming 2023. Subject to change.



CONTACT US

contact@levelcrossings.vic.gov.au
1800 105 105
Level Crossing Removal Project
GPO Box 2392, Melbourne VIC 3001

Follow us on social media
[@levelcrossings](https://www.facebook.com/levelcrossings)



Translation service – For languages other than English, please call 9209 0147.

Please contact us if you would like this information in an accessible format.

If you need assistance because of a hearing or speech impairment, please visit relayservice.gov.au