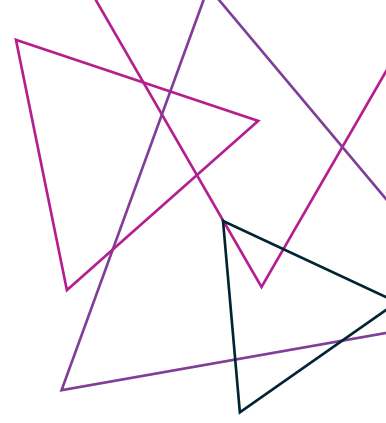




**REGIONAL  
RAIL REVIVAL**

**GEELONG**



# South Geelong to Waurin Ponds Duplication

## Building Marshall Station

The South Geelong to Waurin Ponds Duplication project will deliver more frequent and reliable services and better stations for passengers on Victoria's busiest regional rail line.

Major construction is progressing to upgrade Marshall Station, including building a second track, an accessible pedestrian overpass, a new station building and enclosed waiting room and delivering 200 additional car parks.

As with any project of this scale, temporary construction impacts and disruptions will occur. We

aim to minimise impacts to passengers, residents and businesses wherever possible and will notify well in advance of works occurring.

We will undertake a staged approach to upgrading Marshall Station so we can carry out works safely, while keeping the station open and minimising disruption as much as possible.



*Marshall Station concept image - view from station entrance*



Australian Government



# Upgrading Marshall Station

1

## Site establishment

We will build a temporary carpark to the east of Marshall Station. This car park will offset any parking spaces we need to temporarily occupy while we complete the station upgrade. As part of this work we will establish a site compound within the station car park, south of the station.

2

## Relocation of services

We will relocate underground and overhead services, as well as install temporary fencing, hoarding and sheetpiling.

3

## Foundations laid for the new infrastructure

The new pedestrian overpass between the two platforms will start to take shape, as well as the new second platform and new station building.

4

## Overhead canopies installed

The overhead canopies for the new platform will be installed.

5

## Upgrades to the station building

The old station building will be demolished and rebuilt with a new forecourt.

New signage will be installed throughout the precinct as well as lighting, CCTV, parkiteers and bike hoops.

6

## Adding the finishing touches

Landscaping, creative treatments and the installation of public artworks will occur around the station precinct.

7

## Commissioning

Commissioning of the new duplicated track and second platform is required to integrate the new infrastructure into the operating rail network, to enable additional services to run on the line.

8

## Marshall Station completed late 2024

## Upgrading the Geelong Line

The Victorian and Australian governments are investing more than a billion dollars in projects to deliver better and more frequent services for communities between South Geelong and Warrnambool.

The South Geelong to Warrnambool Duplication project will enable more frequent services, upgrade South Geelong and Marshall stations and remove the dangerous and congested level crossings at Fyans Street and Surf Coast Highway.

The project is part of the Regional Rail Revival program which is upgrading every regional passenger line in Victoria and creating 3,000 jobs. Rail Projects Victoria is delivering the program on behalf of the Australian and Victorian governments.


## Keep informed

As the project progresses, we will keep passengers and the community informed.

To receive updates about the South Geelong to Warrnambool Duplication sign up to our eNews at [regionalrailrevival.vic.gov.au/geelong](https://regionalrailrevival.vic.gov.au/geelong) or follow us on Facebook [facebook.com/RRRGeelongWarrnambool](https://facebook.com/RRRGeelongWarrnambool)

## More information

 [regionalrailrevival.vic.gov.au](https://regionalrailrevival.vic.gov.au)

 1800 105 105  
(24 hours a day, 7 days a week)

Rail Projects Victoria  
PO Box 2392, Melbourne, VIC 3001



Interpreter Service (03) 9209 0147

It should be noted that this information is current at the time of printing, however due to unforeseen circumstances, changes may occur. Please visit [regionalrailrevival.vic.gov.au](https://regionalrailrevival.vic.gov.au) for the latest updates.