

Works on the rail trench at
Surrey Hills and Mont Albert

Mont Albert and Surrey Hills, April 2023

Boom gates gone – Union Station opening soon



We are removing two of Melbourne's most dangerous and congested level crossings at Union Road, Surrey Hills and Mont Albert Road, Mont Albert and building a brand-new Union Station.

Your new Union Station will open on Monday 22 May, with trains running on the Belgrave and Lilydale lines in the rail trench beneath Mont Albert and Union roads.

From Sunday 28 May, Union Station will have three additional morning and evening services on weekdays, providing passengers with more travel options. For more information go to ptv.vic.gov.au.

Union and Mont Albert roads will re-open over the coming weeks with pedestrians and traffic able to safely travel on the level crossing-free roads.

With these two dangerous and congested level crossings gone, more than 22,000 vehicles will enjoy safer and less congested journeys.

Works will continue after the construction blitz to build station car parks, new open spaces, and complete landscaping and finishing works.

We thank residents, commuters and traders for their patience while we complete one of the biggest engineering projects ever undertaken in Melbourne's east.

Upcoming changes to the way you travel

Early May

Union and Mont Albert roads open with ongoing traffic management

Monday May 22

Union Station opens with trains in rail trench

Sunday May 28

New timetable with more weekday services stopping at Union Station



Sign up for updates
levelcrossings.vic.gov.au





Open space and landscaping designs

Thank you to the many locals who provided us with feedback on open spaces and landscaping in mid-2022!

Our designers have drawn on this local feedback to refine the landscaping designs for the new open spaces including Union Road open space, Mont Albert Heritage Plaza and Lorne Parade Reserve.

Union Station features layered canopies, traditional materials and soft muted colours that help integrate the new infrastructure with the surrounds.

These themes carry into the surrounding precinct where we'll plant more than 52,000 trees, shrubs and plants, ensuring the area retains its leafy feel now and into the future.

The result is a calm, composed and connected station precinct design with open, bright and inviting spaces set into the leafy landscape.

Work on the car parks, landscaping and open spaces will continue into Spring.

All images show trees and plants 3-5 years post-planting.



Rejuvenated Lorne Parade Reserve. Artist impression only, subject to change.



Montrose Street Pocket Park and Station entrance. Artist impression only, subject to change.



Union Road open space. Artist impression only, subject to change.



Mont Albert pick up and drop-off area. Artist impression only, subject to change.



Mont Albert heritage plaza. Artist impression only, subject to change.

Your new Union Station

The new premium station will open on Monday 22 May.

From Monday 22 May, trains on the Belgrave and Lilydale lines will run beneath Mont Albert and Union roads in the new rail trench and stop at the new Union Station.

Trains will run to the previous Surrey Hills Station schedule until Sunday 28 May, when a new timetable with more trains stopping at Union Station will start.

The new station will feature CCTV and improved lighting, as well as a new waiting room, toilets and lifts and stairs to access the platforms.

The new timetable and more information will be available at ptv.vic.gov.au, PTV's journey planner app and metrotrains.com.au.

Pedestrians will be able to access the new Union Station from Windsor Crescent, Montrose Street, Lorne Parade and Mont Albert Road.

Disability compliant spaces will open in Union Station's southern car park on Monday 22 May as well as pick up and drop-off zones on Montrose Street and Mont Albert Road.

The Parkiteer bicycle lockup will also be open.

Alternative commuter car parks in Box Hill (at Ace and Wilson Parking) will remain available to train passengers until the new station car parks open in late 2023.



Stay up to date

For more information on what to expect when the new Union Station opens scan the QR code or visit bigbuild.vic.gov.au/projects/level-crossing-removal-project/ **subscribe** to sign up for email updates and receive the latest project information.

Over the coming months we will continue working to:

- open the new Union Station car parks
- finish the shared use paths and pedestrian connections
- complete the open spaces such as the new Union Road open space, rejuvenated Lorne Parade Reserve and the Mont Albert Heritage Plaza
- plant the 52,000 trees, shrubs and plants across the station precinct
- add the finishing touches such as paint, cladding and architectural surfaces
- re-surface local roads and footpaths.



Western concourse of Union Station. Artist impression only, subject to change.

Boom gates being removed for good at Union Road, Surrey Hills



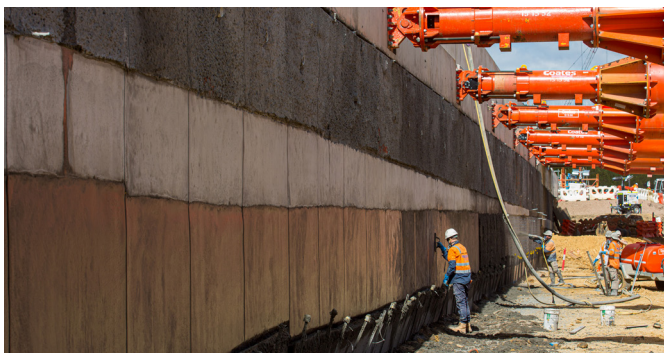
Progress in pictures



The boom gates and old rail infrastructure were removed and the Mont Albert Station building was carefully dismantled.



Over 80 Olympic swimming pools worth of soil was excavated to dig the 1.3km rail trench.



Piling and capping beam works helped form the trench wall.



Huge, concrete beams were laid across the rail trench to help form the foundation of the new Union Station concourses.



Union Station buildings, which were built off-site, were delivered and craned into position.



The Union Station buildings were craned onto the western and eastern concourses.

One of the local traders in Mont Albert Village displaying a Shop local sign.



Thank you for shopping local

Thank you to all the shoppers who have supported local traders during our construction blitz!

Stamp Me and Shop and Save have rewarded locals and visitors for shopping local in Mont Albert Village and Union Road, Surrey Hills.

So far, thousands of vouchers have been issued to local shoppers, with every dollar being redeemed at participating local businesses.

With Union Road and Mont Albert roads opening soon, keep shopping local and support your local traders!

Signing up to Stamp Me is easy: **download** the Stamp Me app and **click the '+' icon** to search for Mont Albert Village Traders and Union Road Surrey Hills.



Find out more

For more information about how to participate in Shop and Save and earn vouchers to spend at Union Road or Mont Albert Village, scan this QR code or visit bigbuild.vic.gov.au/news/level-crossing-removal-project/shop-and-save-in-mont-albert-and-surrey-hills

Project timeline



Early 2021

- First phase of community consultation completed



Mid 2021

- Updated designs released
- Ongoing community engagement
- Design enhancements released
- Contract award announced
- Early works begin



Early 2022

- Major construction begins
- Final designs released



Early 2023

- Big Dig commences



May 2023

- Level crossings gone for good
- New Union Station opens



Late 2023

- Plant 52,000 trees, shrubs and plants
- Open spaces at Union Road, Lorne Parade Reserve, Montrose Pocket Park, Mont Albert pick up and drop-off area and Mont Albert heritage plaza completed
- Union Station car parks open
- Finishing works completed

* Timeline subject to change.

levelcrossings.vic.gov.au

contact@levelcrossings.vic.gov.au



For languages other than English, please call 9209 0147.

1800 105 105 (call anytime)

Please contact us if you would like this information in an accessible format. If you need assistance due to a hearing or speech impairment, visit relayservice.gov.au

