



## TOWN HALL STATION COMMUNITY REFERENCE GROUP

### CROSS YARRA PARTNERSHIP D&C

**Kate Walshe**, Communications and Stakeholder Engagement Director, CYP D&C

**Blythe Chidgey**, Town Hall Station Stakeholder Engagement Manager, CYP D&C

**Andrew Cox**, Flinders Quarter, Project Manager, CYP D&C

**Terese Scalise**, Communications and Stakeholder Engagement Director, CYP PCO

**27 March 2023**



# Agenda



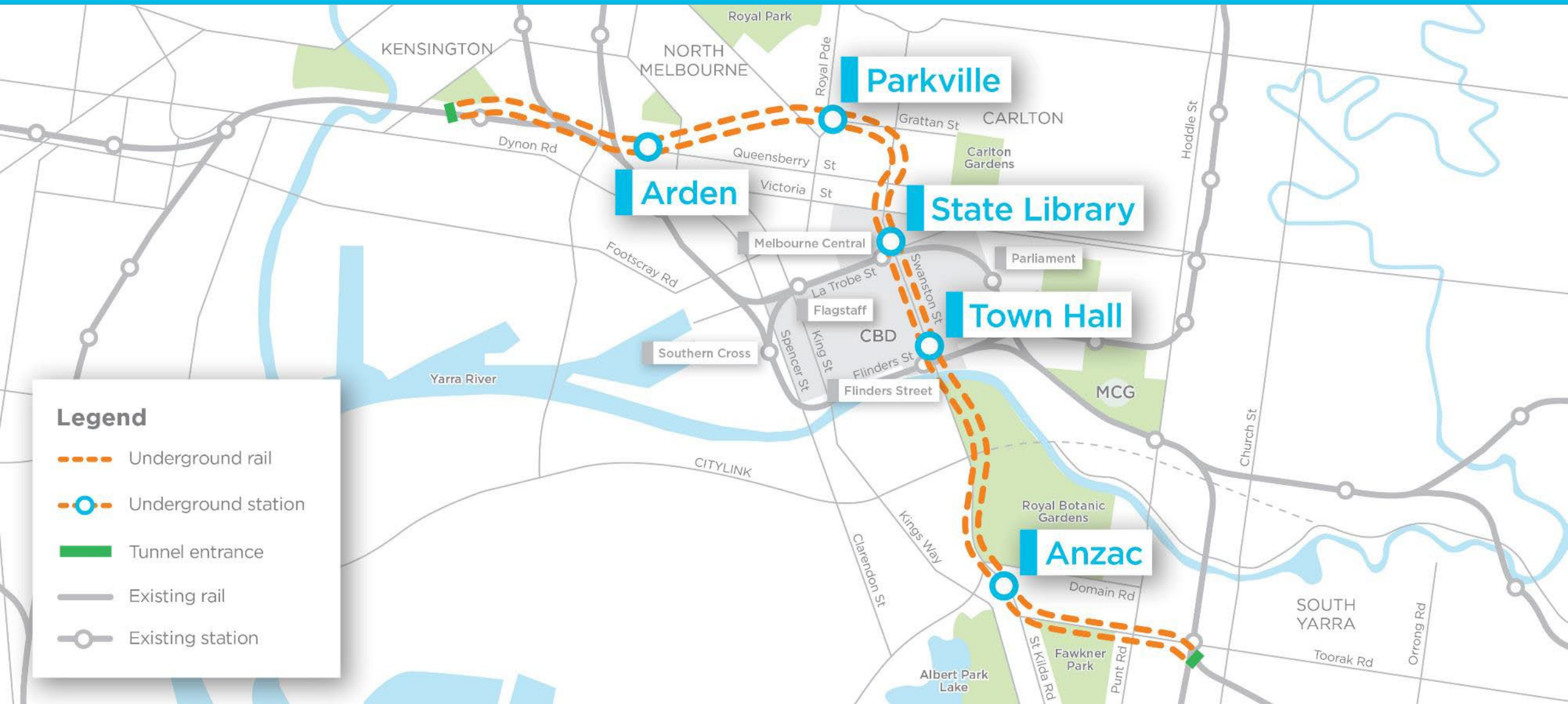
1. Precinct Updates
2. Town Hall Station Update
3. Creative Program Update



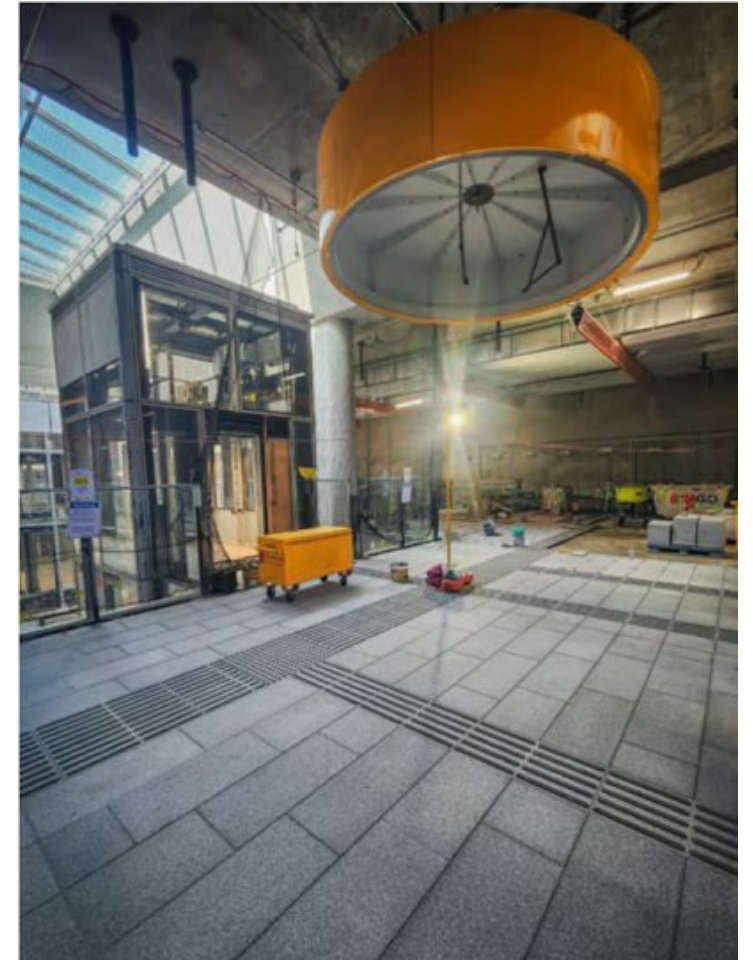
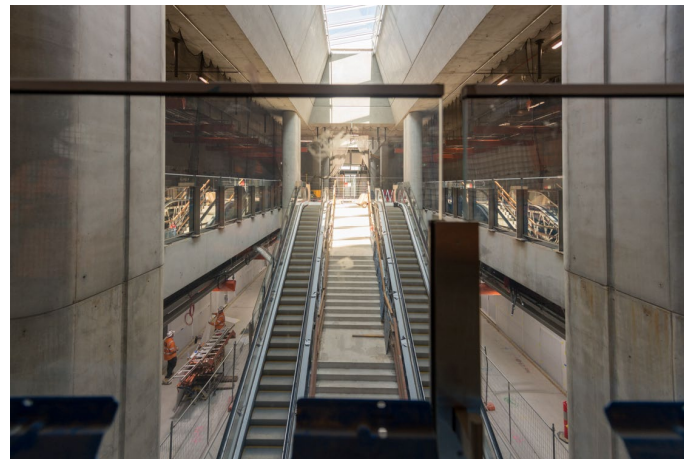
# Precinct Updates

# Metro Tunnel Project

## Project Alignment





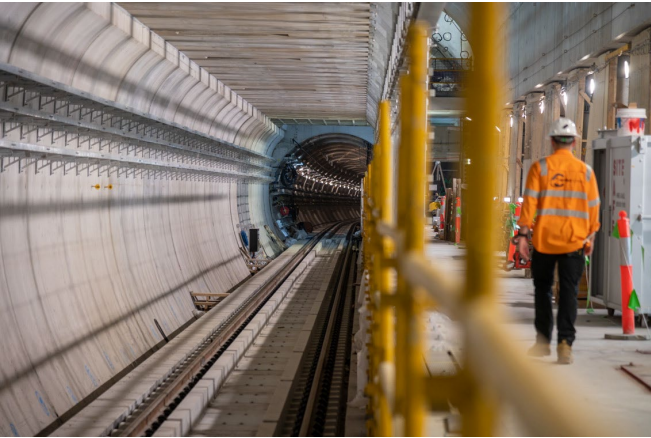
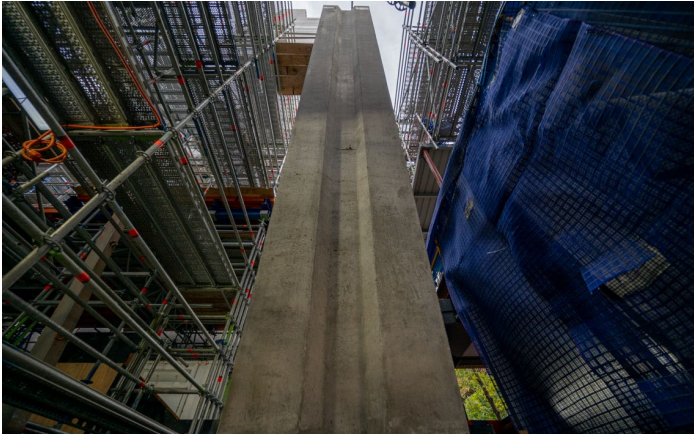




# Parkville

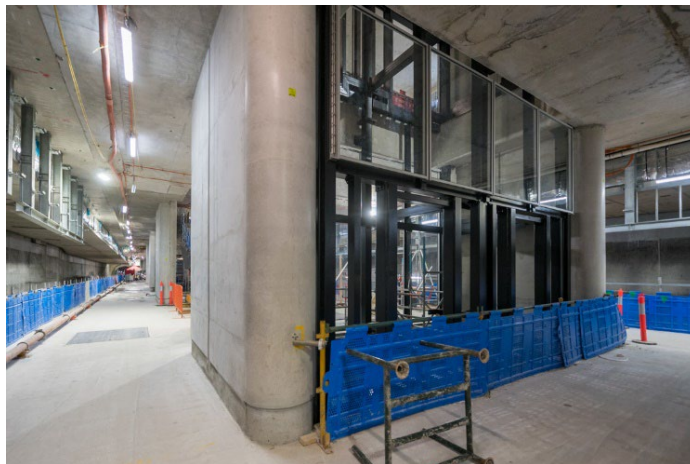








# Domain – Anzac Station



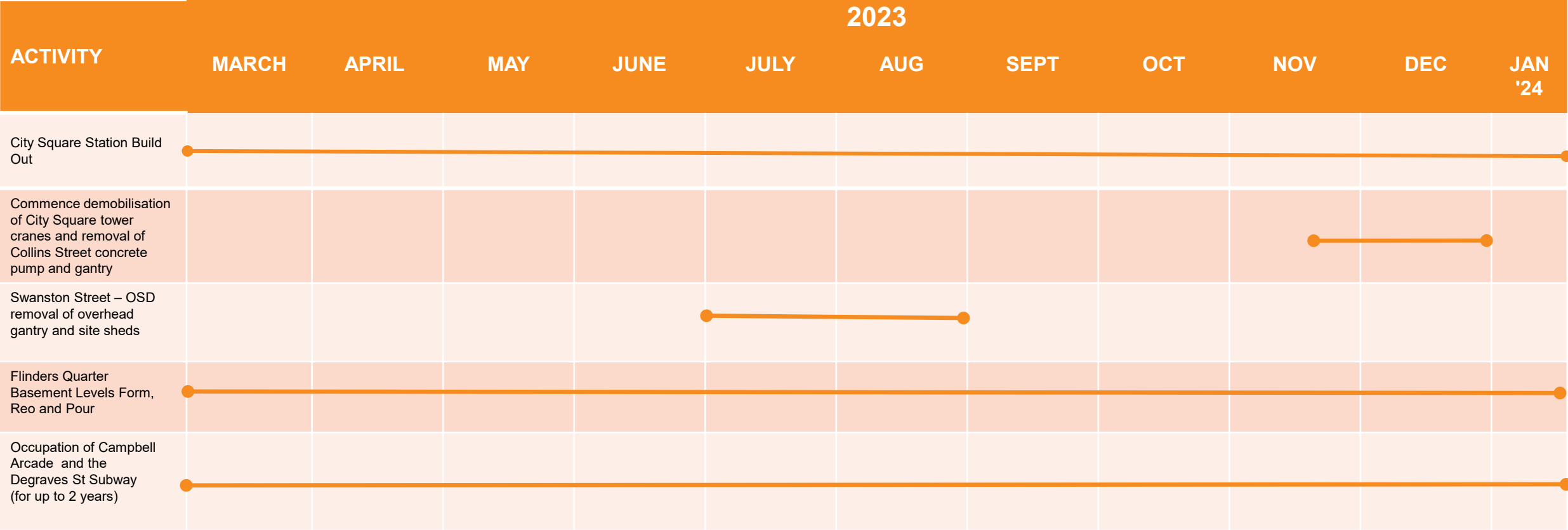




# Town Hall

---

## Station Update





# Flinders Quarter Site





# Flinders Quarter Shaft A

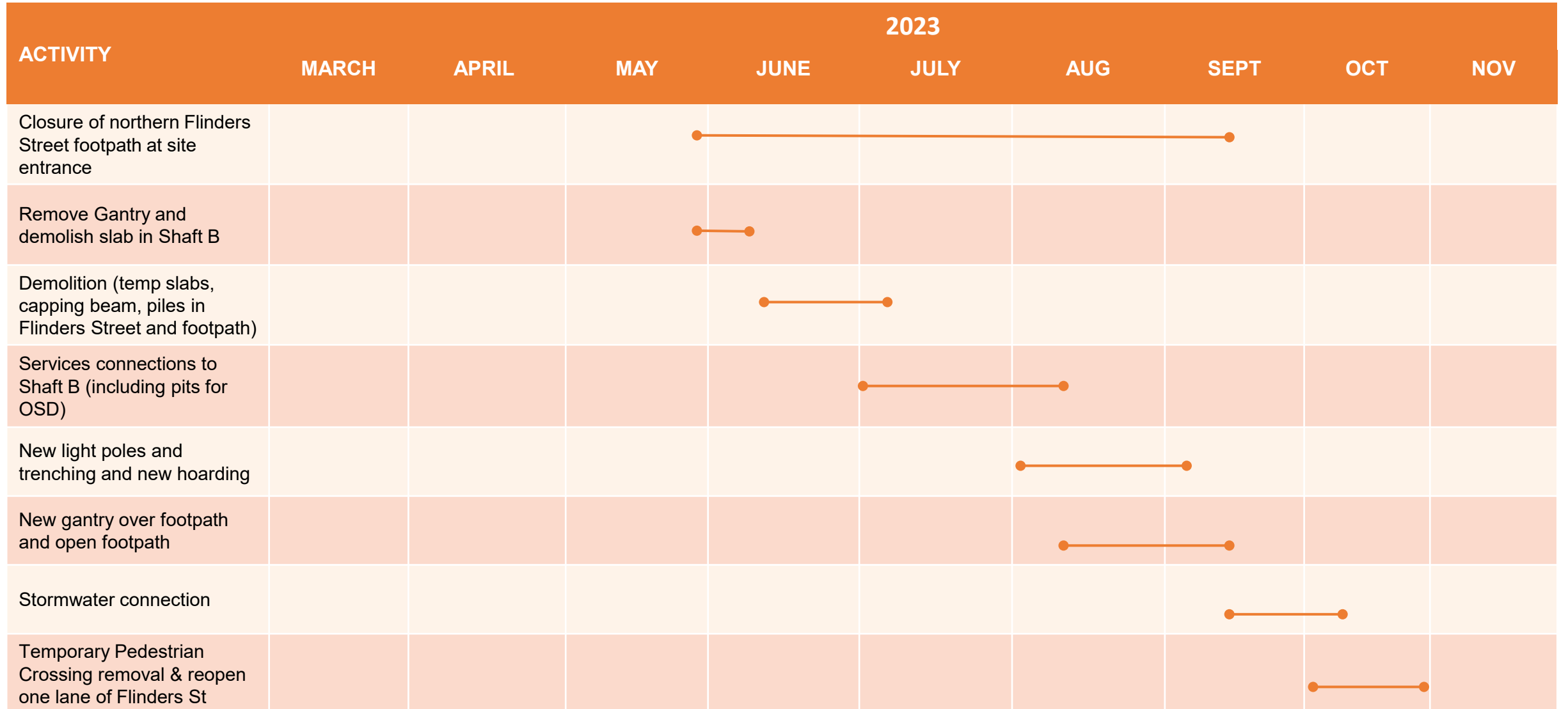




# Degraves Subway and Campbell Arcade Works



# Flinders Street Program





# Platform Construction





## Rail fitout





# Rail Tunnel



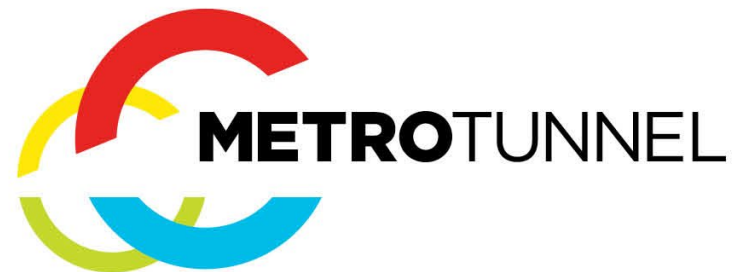


# City Square and Concourse



# Questions





## Creative Program Update



# Jody Haines: The awakening

Scott Alley, late March



**Deanne Gilson:** Karrap Karrap Beenyak Mundi-gurrk/ Baskets of Knowledge  
City Square, March 2023



KIND A - 7400mm (w) x 2400mm (h) - Qty:1



KIND B - 13200mm (w) x 2400mm (h) - Qty:1



KIND C - 13200mm (w) x 2400mm (h) - Qty:1



KIND D - 7400mm (w) x 2400mm (h) - Qty:1





# Roving performers in Fed Square

February - April



Thursday afternoons  
from 4:30pm to 6:30pm

March program:

- One Eye and Frill Neck
- Queen of Hearts
- Perky and Fiddle
- Giant Bees

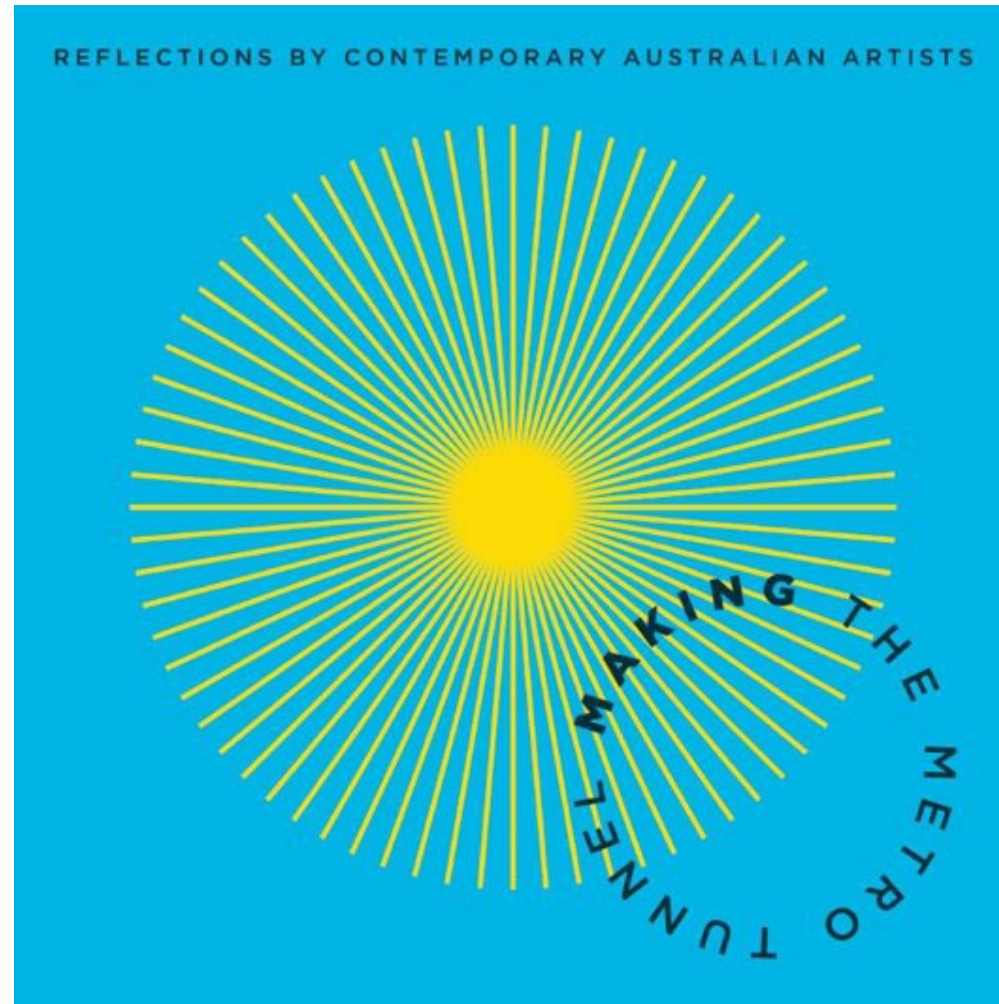
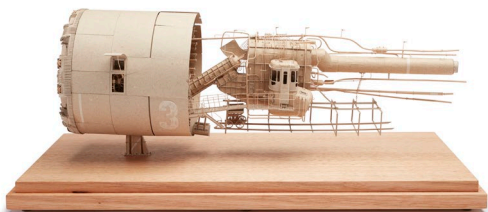
<https://whatson.melbourne.vic.gov.au/things-to-do/pop-up-roving-performances>





# Making the Metro Tunnel

1 April to 7 May, Domain House (South Yarra)



- The artists in this exhibition have taken inspiration from archaeological digs, heavy machinery, the aesthetics of worksites and worker's equipment to produce their own portrayals of the city-shaping project as well as artworks from a creative partnership with the Royal Botanic Gardens.
- Open 11am to 5pm Wednesday to Sunday,
- Entry is free.



# Questions