

LEVEL
CROSSING
REMOVAL
PROJECT

WEBB STREET, NARRE WARREN

KIDS ACTIVITY BOOK



levelcrossings.vic.gov.au

VICTORIA'S
BIG BUILD

VICTORIA
State
Government

Find the 15 words in this puzzle

R	A	I	L	B	R	I	D	G	E	A	E	W	V	K	C
B	L	E	V	E	L	C	R	O	S	S	I	N	G	W	O
M	P	U	C	J	N	A	R	R	E	W	A	R	R	E	N
Y	A	T	Y	K	A	S	D	Y	B	M	W	Y	D	B	N
T	E	C	I	O	E	T	R	A	F	F	I	C	A	B	E
I	O	K	H	J	S	D	L	K	K	Y	T	W	P	S	C
N	S	U	G	I	N	C	V	Y	X	K	Z	C	R	T	T
U	I	U	T	Q	N	S	T	A	T	I	O	N	E	R	I
M	O	E	L	J	I	E	F	T	M	V	I	W	R	E	O
M	D	J	B	O	F	L	I	Y	C	A	D	F	J	E	N
O	N	M	U	A	G	E	M	T	R	U	C	K	L	T	J
C	O	N	S	T	R	U	C	T	I	O	N	K	F	D	E

Words can be across, down or diagonal.

Webb Street
Narre Warren
Level Crossing
Safety
Truck
Rail Bridge
Traffic

Station
Construction
Machine
Bus
Train
Connection
Community

How to play i

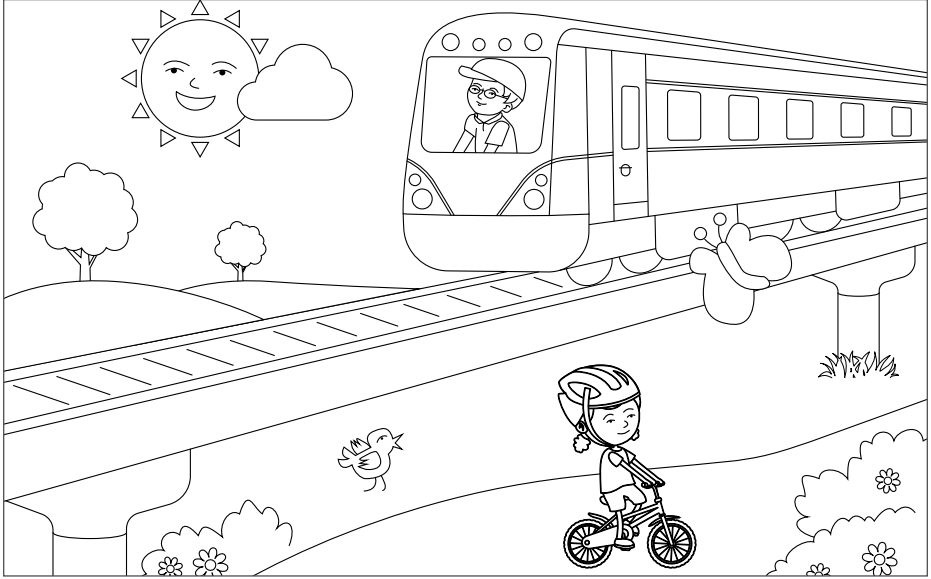
Find all hidden words in the letter scramble. Watch out - they might even be back to front!



Spot 10 differences

Did you know ?

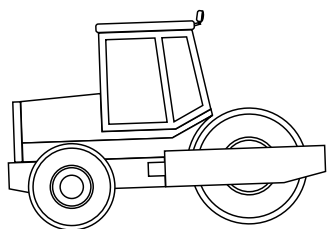
A new 50 metre steel bridge section will help the train cross over Narre Warren-Cranbourne Road. That's the length of about 42 adult emus!



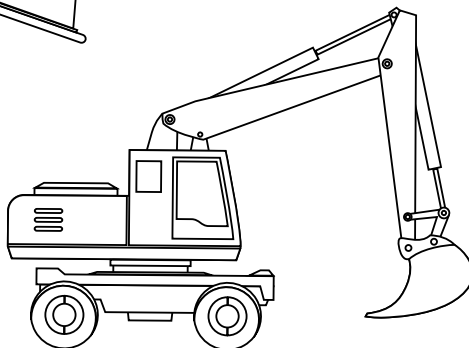
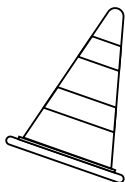
Colour me in and learn!

Did you know ?

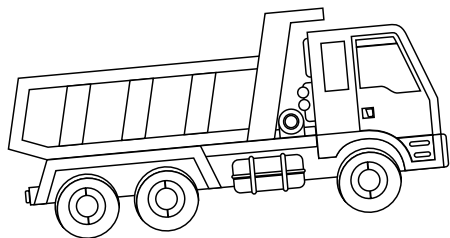
There are lots of different kinds of construction vehicles, and each one has its own job! Here are a few you can find on level crossing removal sites.



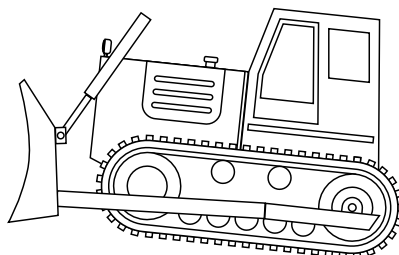
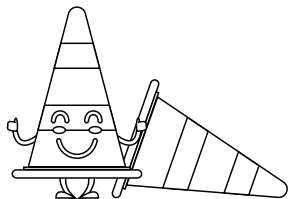
Road Roller



Excavator



Dump Truck



Bulldozer

Colour me in and match!

How to play



Colour this page in and
then draw a line to
match food items from
Narre Warren Village.



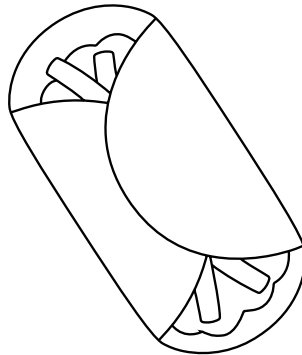
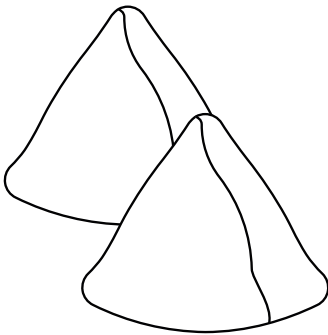
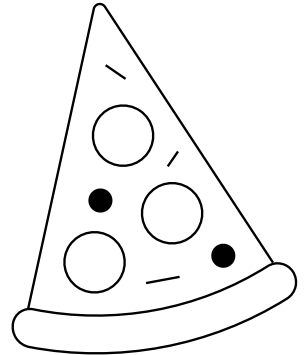
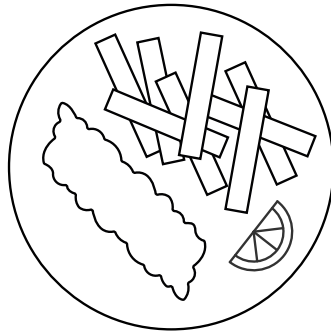
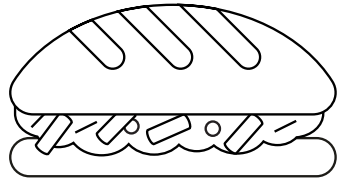
Samosa

Fish and Chips

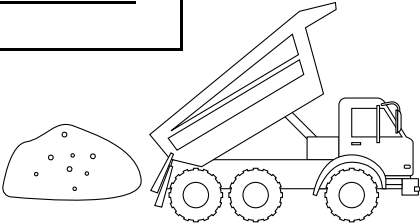
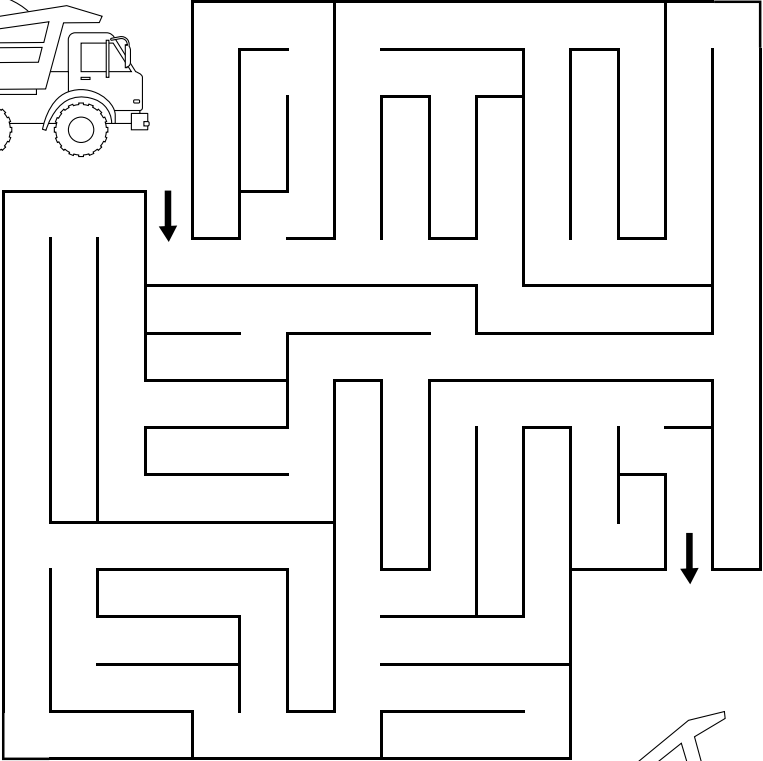
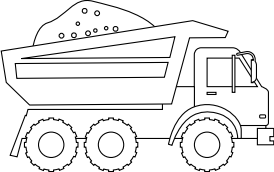
Kebab

Banh Mi

Pizza

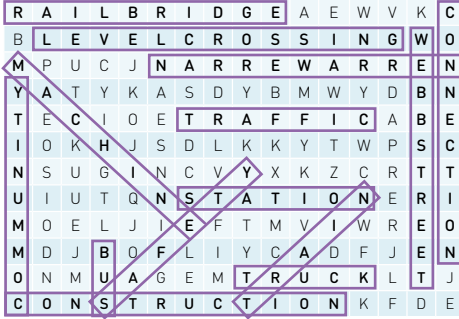


Help the truck through the maze

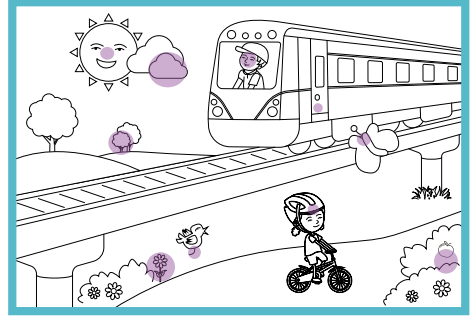


Solutions

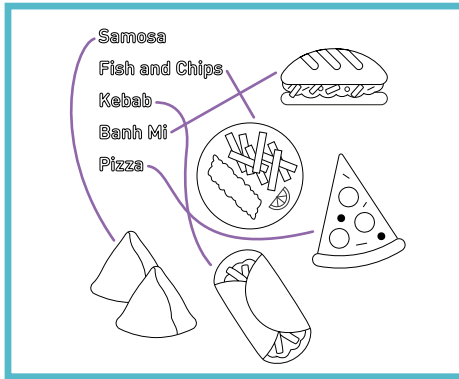
Page 1



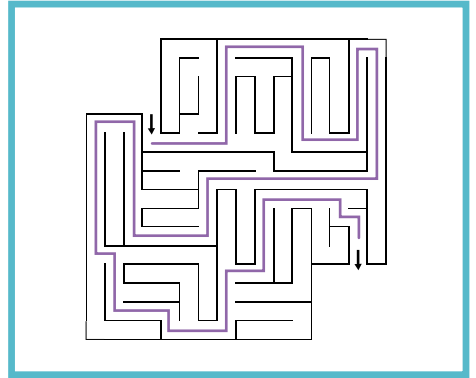
Page 2



Page 3



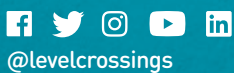
Page 5





contact@levelcrossings.vic.gov.au
1800 105 105

Level Crossing Removal Project
GPO Box 2392, Melbourne VIC 3001



Translation service – For languages other than English, please call 9209 0147.

Please contact us if you would like this information in an accessible format.

If you need assistance because of a hearing or speech impairment, please visit relayservice.gov.au