



LEVEL CROSSING REMOVAL PROJECT



BAYSWATER





LEVEL CROSSING REMOVAL UPDATE

ISSUE #04 JULY 2016

Removing 50 of Melbourne's dangerous and congested level crossings will transform the way people live, work and travel across metropolitan Melbourne and improve safety for drivers and pedestrians.

At Bayswater, the project team is removing the level crossings by lowering the train line below Mountain Highway and Scoresby Road, rebuilding Bayswater Station, constructing a new cycling/pedestrian path and reconstructing the station car park.

CONTACT US

-  levelcrossings.vic.gov.au
-  bayswater@levelcrossings.com.au
-  1800 762 667 (business hours Monday – Friday and during out of hours works)
-  Level Crossing Removal Authority
GPO Box 4509
Melbourne VIC 3001

Follow us on social media @ [levelcrossings](#)



 Translation service
For languages other than English,
please call 9280 0780

What's happening?

Construction is now well underway as part of the Bayswater Level Crossing Removal Project.

Between April and June, piling activities continued next to the rail line. These piles will support the wall of the new, lowered railway. Work is progressing well, with 132 of the 710 piles already completed.

Upcoming works

Belgrave/Lilydale line closure

From Saturday 2 July until Sunday 10 July 2016, buses will replace trains on sections of the Belgrave/Lilydale lines for major works on Bayswater, Blackburn and Heatherdale level crossing removal projects. A mix of limited express and stopping all stations buses will be operating, to help make your journey as direct as possible. Limited express buses from Bayswater will stop at Heathmont then run express into Box Hill. Normal train services will operate from Box Hill to the City. For details, visit our disruptions page www.levelcrossings.vic.gov.au/disruptions.

During this time, Bayswater Station will be closed, and replacement buses will operate from Bayswater Road, opposite Bayswater Oval.

Normal train services resume on Monday 11 July.

Customers with additional needs, please call **1800 762 667** for assistance.

24/7 construction activities

While the rail is closed, construction will take place 24 hours a day, 7 days a week.

Every effort will be made to ensure disruption to local residents is minimised, however, these activities will generate noise and light that may be noticeable.

Scoresby Road closure

From 1am on Saturday 2 July until 5am on Thursday 7 July 2016, Scoresby Road will be closed to traffic at the level crossing. Detours will be in place during this time.

All businesses on Scoresby Road will remain **Open for Business**, so make sure you continue to support your local businesses and shop local.



GET PROJECT UPDATES TO YOUR INBOX
SIGN UP TO - levelcrossings.vic.gov.au

Open for Business

Shop local and support your community

Your local Bayswater businesses will be **Open for Business** throughout the removal of the level crossings on Mountain Highway and Scoresby Road.

By shopping locally, you will be helping to support your local community.

You will also enjoy friendly, personal service and get some great local deals.

Look out for our brochure, featuring some of your favourite local businesses.



Progress photos



Combined services route

The signalling, communication and electrical cables essential for running trains.



First retaining wall piles

Currently constructing 80 lineal metres of pile depth per day.

Our visitor information display is now open!

In early May we opened our dedicated project information display centre.

Come and visit our Information Display at the project office in Station Street, and find out about the work we are doing.

We welcome individuals, school and community groups. Please call us on **0438 710 941** to book an appointment.

Have a play with our 3D goggles, and talk to some of the team on site.



Dynamic load testing

Dropping 20,000kg of weight on top of the station piles to test how much weight they can support.



Travelling in the shoes of others

The project team go out on the local network under blindfold to gain greater awareness of accessibility issues.

Bus stop relocation

Changes have been made to the 664 bus service.

To keep updated about these changes to bus stop locations and timetabling please check the PTV website before you travel.

People with additional needs please contact PTV directly on **1800 800 007** for more information.

Spotlight on...

In each edition of this update, we will feature local businesses in Bayswater as a way of showing our support for the community. To have your business featured in the next edition of the Community Update, email bayswater@levelcrossings.com.au or call us on **0438 710 941**.

Your Brand Unleashed

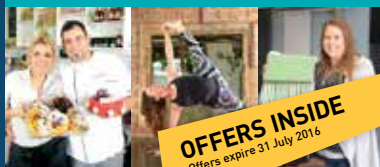
Your Brand Unleashed is your print and promotional products partner. When you are thinking of unleashing your brand, think Your Brand Unleashed.

Eastern Auto Paints

Eastern Auto Paints are the leading suppliers of automotive, industrial and truck refinish coatings and products in Bayswater. Mention this ad for a 10% discount.

Car Pac Auto

Car Pac Auto offer smash repairs, car detailing, claims management and free loan cars. Drop by for a coffee and a quote.



OFFERS INSIDE
Offers expire 31 July 2016

Your Brand Unleashed

4/40 Station Street, Bayswater 3153
(03) 9738 0879

Eastern Auto Paints

20 London Drive, Bayswater 3153
(03) 9761 2155

Car Pac Auto

2 Scoresby Road, Bayswater 3153
(03) 9729 9922

levelcrossings.vic.gov.au

Authorised and published by the Victorian Government, 1 Treasury Place, Melbourne

