



STATE LIBRARY STATION COMMUNITY REFERENCE GROUP

Kate Walshe, Communications and Stakeholder Engagement Director, CYP D&C

Melinda Kelly, State Library Station Stakeholder Engagement Manager, CYP D&C

6 September 2023



Agenda



1. Precinct Update
2. State Library Station Update



Precinct Update



State Library Station Update

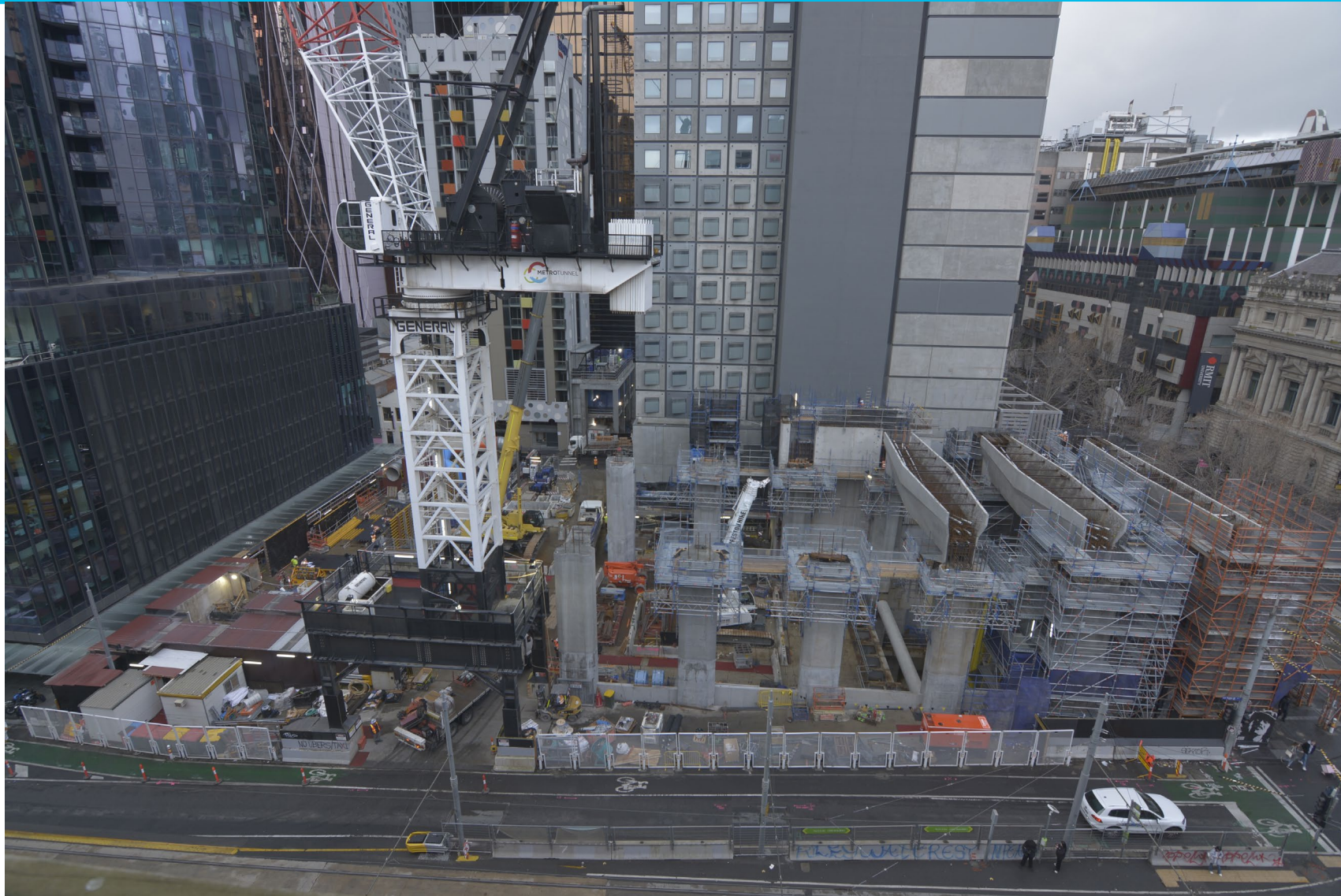
State Library Station

La Trobe Street site



State Library Station

La Trobe Street site



State Library Station

La Trobe Street site



ACTIVITY	SEP	OCT	NOV	DEC	JAN	FEB	MAR
Shaft construction (formwork installation, concrete pours, slab and wall construction)							
Blockwork							
Fit-out							
Mechanical, electrical and plant installation							

State Library Station

La Trobe Street site



Station entrance and aboveground

Beam delivery & installation, column construction, precast panel installation:

- All 12 columns have been poured
- 3 of 6 portal beams delivered and installed
- Next 3 portal beams delivered in September
- Beams will be filled in ready for planks which will be installed over the beams
- Scrubber and shed demobilised
- Construction of lift walls and above ground structure can commence.

Melbourne Central escalator installation

At future underground passenger connection between Melbourne Central Station and State Library Station:

- Escalator 1 of 2 has been installed. Fit out continuing
- Hoarding for escalator 1 has been relocated with Melbourne Central escalator back in operation
- Escalator 2 slab demolition complete
- Escalator 2 installation will commence in October.

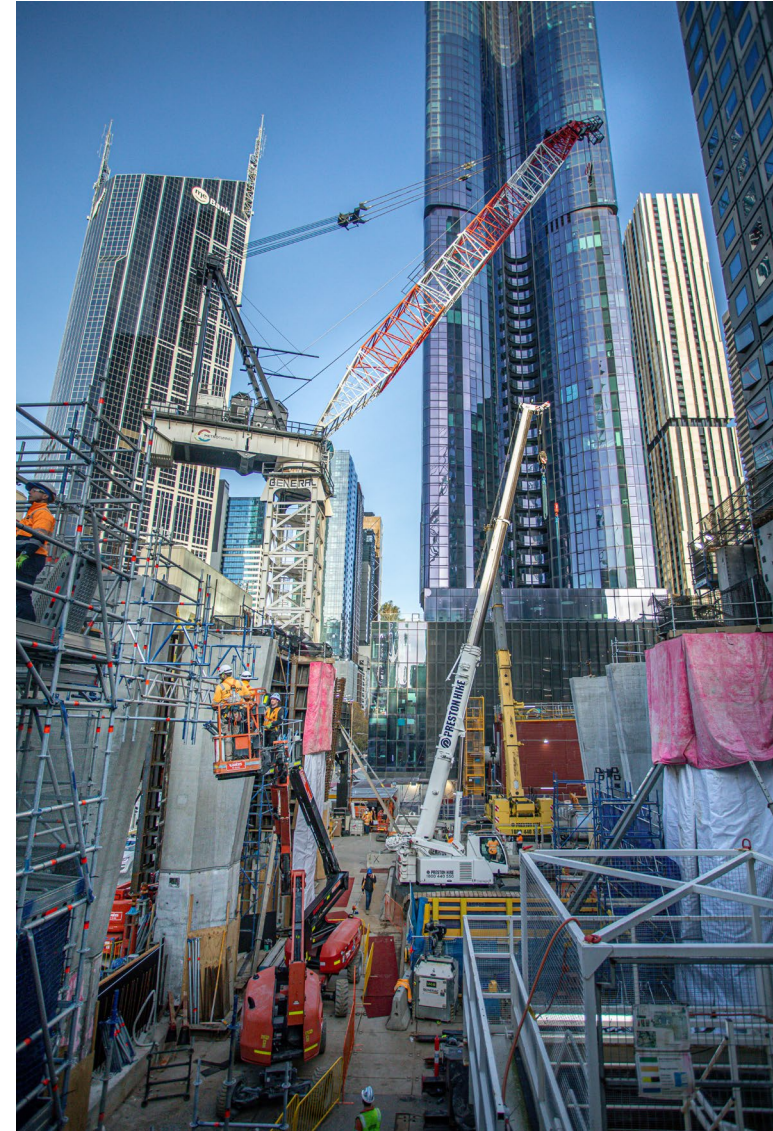
State Library Station

La Trobe Street site



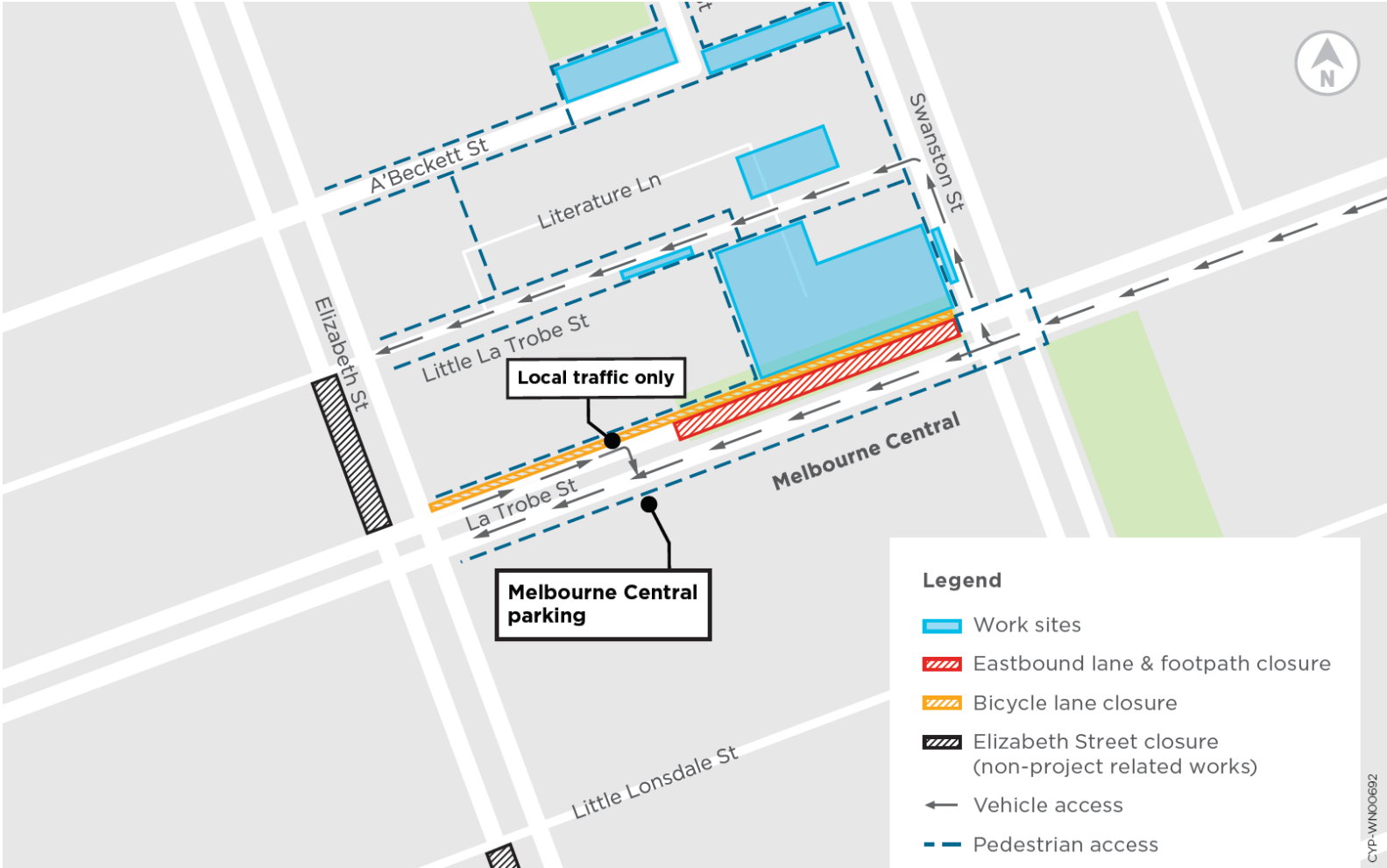
La Trobe Street eastbound closure

- La Trobe Street eastbound traffic and bike lane closure required between Elizabeth and Swanston streets
- Commencing 10pm Monday 4 Sep 2023 for up to 12 months
- Closure is required to facilitate surface structure and main Station entrance, full Station fit-out, emergency access and exits, and completion of the direct passenger connection to Melbourne Central Station
- Pedestrian and vehicle access will be maintained for local businesses and residents
- No impact to tram services.



State Library Station

La Trobe Street site

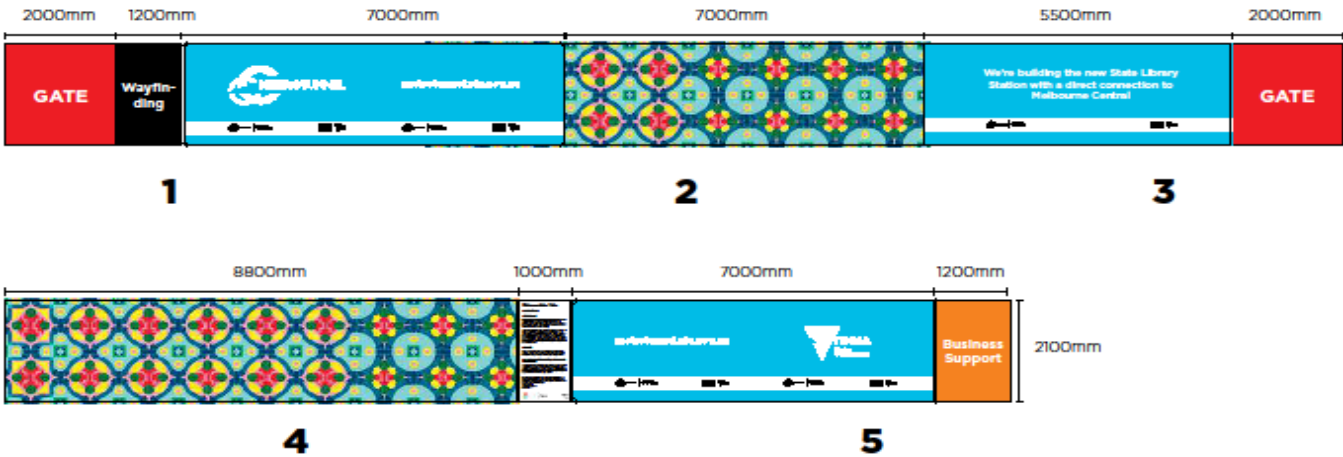


State Library Station

La Trobe Street site



LA TROBE STREET - HOARDING ELEVATIONS



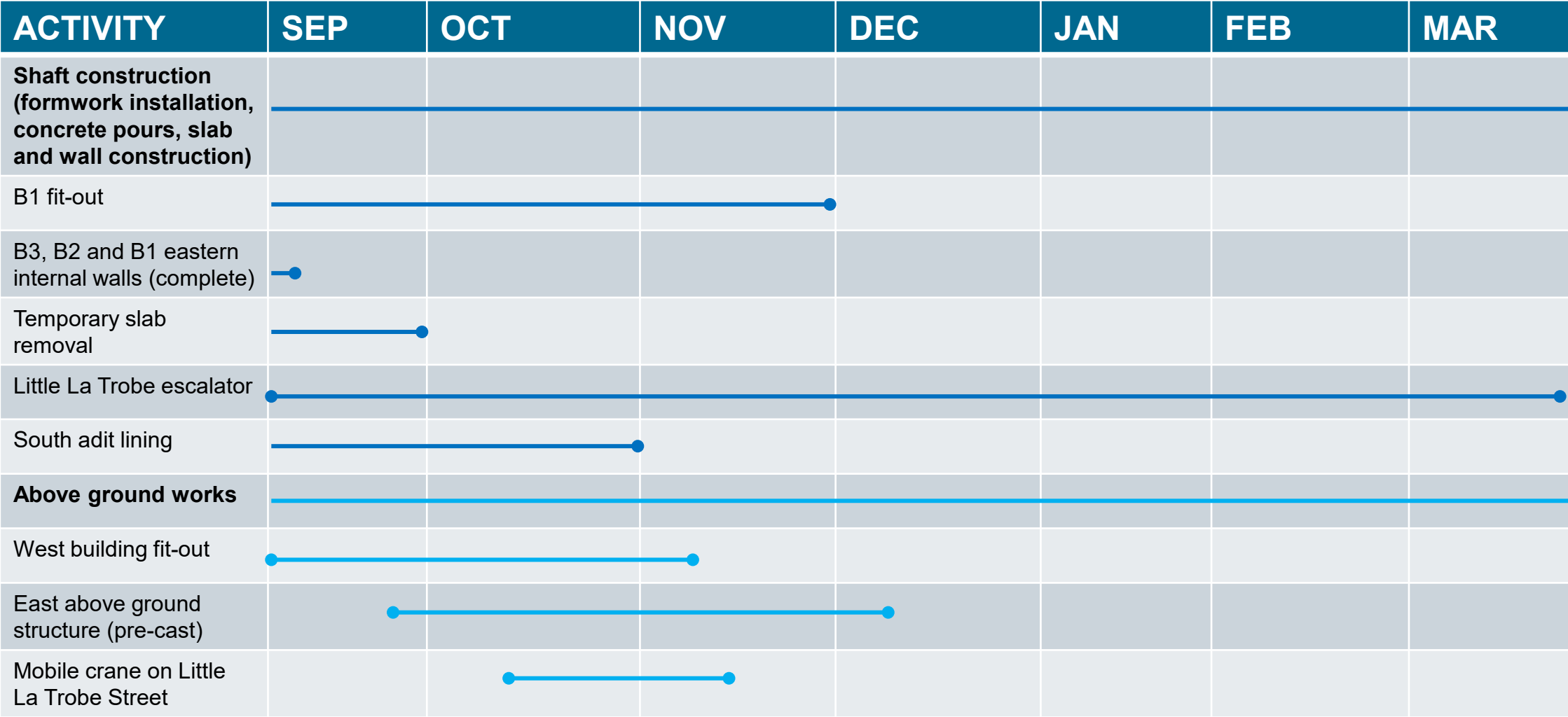
State Library Station

Little La Trobe Street site



State Library Station

Little La Trobe Street site



State Library Station

Franklin and A'Beckett Street sites



Franklin and A'Beckett Street sites



ACTIVITY	SEP	OCT	NOV	DEC	JAN	FEB	MAR
A'Beckett Street shaft construction							
Walls	B4 Internal walls						
Slab pours	B3 Slab						
Strut removal			S5, S4 & S2				
B3 Lining walls				B3 Lining walls			

State Library Station

Franklin and A'Beckett Street sites



OFFICIAL: Sensitive

State Library Station

Franklin and A'Beckett Street sites



OFFICIAL: Sensitive

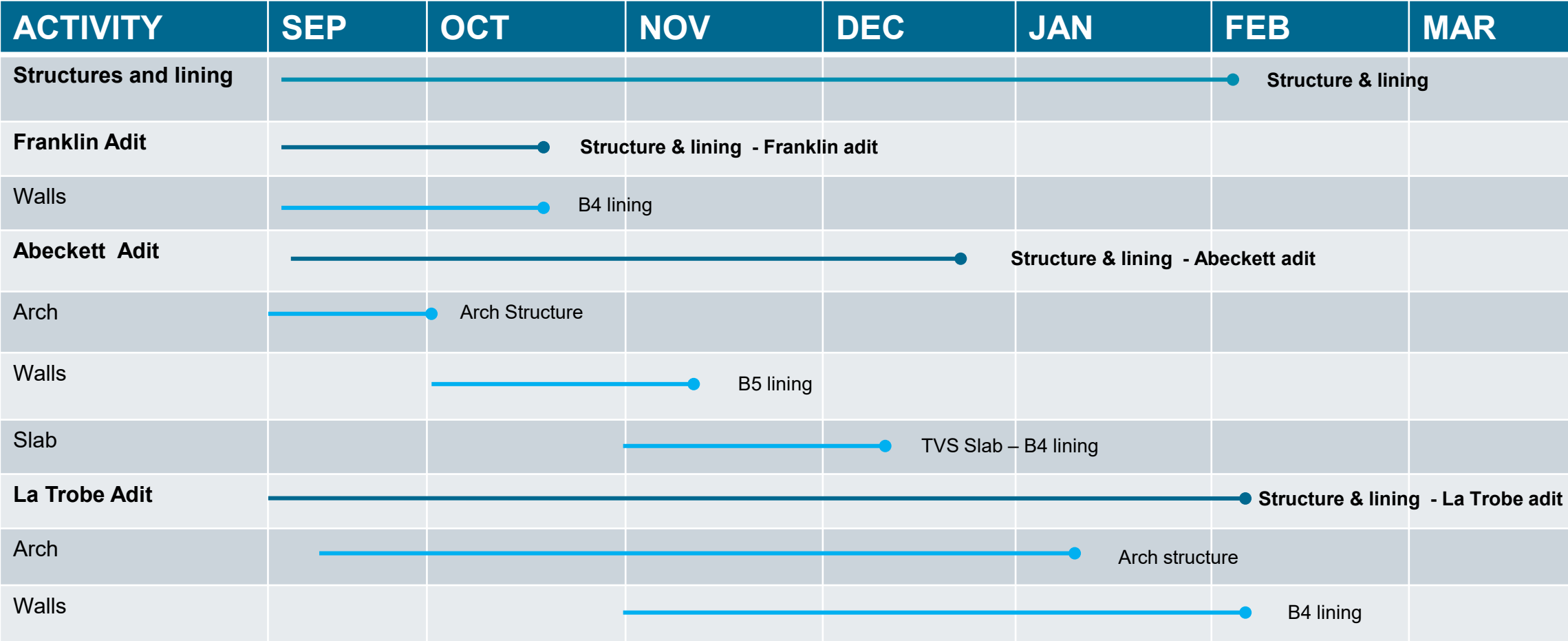
State Library Station

Franklin and A'Beckett Street sites



State Library Station

Franklin and A’Beckett Street sites



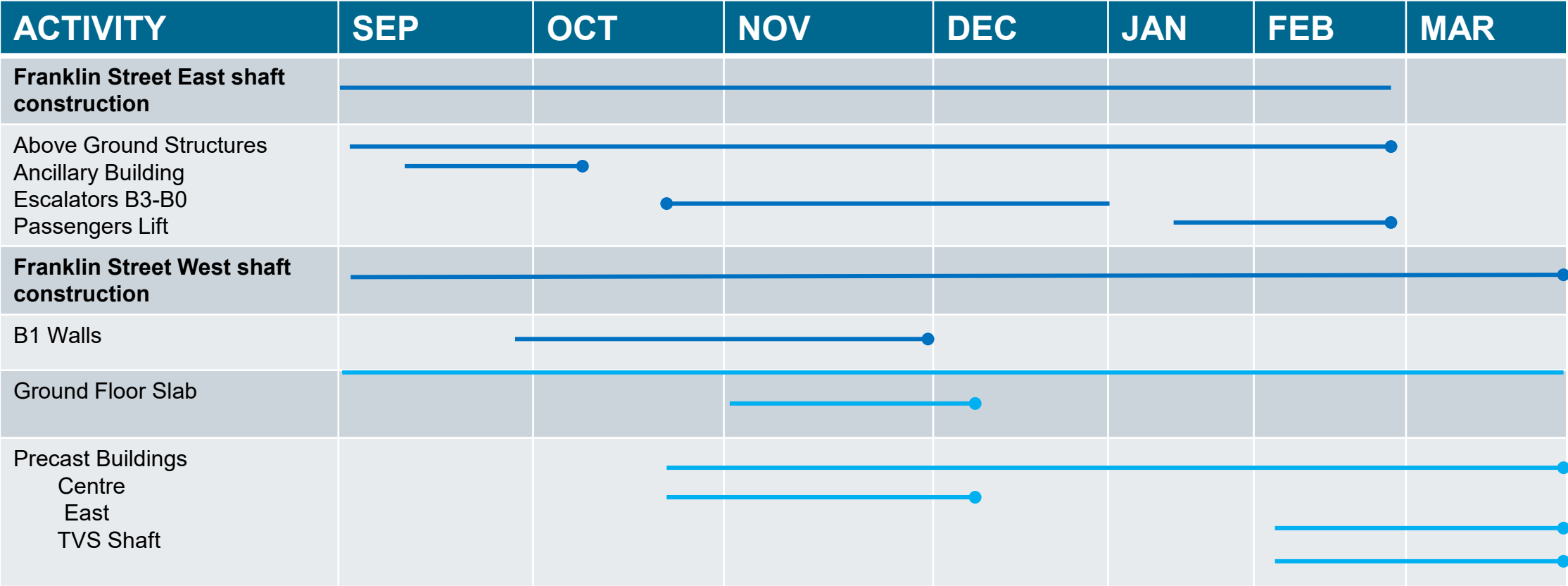
State Library Station

Franklin and A'Beckett Street sites



State Library Station

Franklin and A'Beckett Street sites



State Library Station

Franklin and A'Beckett Street sites



State Library Station

Franklin and A'Beckett Street sites



OFFICE

State Library Station

Franklin and A'Beckett Street sites



Questions