



WE'RE UNDERWAY

ISON ROAD OVERPASS

DECEMBER 2023

We're building the Ison Road Overpass in Werribee to provide a vital link from Wyndham West to the Princes Freeway.

The overpass will help to provide Wyndham West residents access to the surrounding areas, and improve safety and ease congestion by directing traffic out of the Werribee Town Centre.

The project will see a new road overpass bridge built across the Melbourne-Geelong railway line, extending Ison Road south towards Browns Road.

The overpass will link to a new section of Ison Road, which will be built by Wyndham City Council.

What we've been up to

We've had a busy few months on the project with our team undertaking investigations in the area as we continue developing the design and getting ready for construction.

These include flora and fauna surveys, archaeological analysis and ground condition surveys, as well as relocating utilities.

In recent weeks we've established our worksite and set up site offices on Brown and Bulban roads.



As part of the Ison Road Overpass we'll:

- build a new four-lane road
- build a bridge over the rail line
- future proof the bridge for six lanes
- build walking and cycling path along the overpass
- build a dedicated cycling track underneath the overpass.



Sign up for updates
Subscribe for email and SMS updates
at bigbuild.vic.gov.au/roads-subscribe





NEW FOUR-LANE BRIDGE

Next steps?

We have awarded a contract to build the overpass, and from January you'll see more trucks and machinery entering the worksite as we start work to improve the ground conditions where we're building the overpass.

This stage of the project is about building a strong foundation underground to support your new four-lane bridge.

We'll do this in different ways depending on the location. On the north side of the rail line, we'll dig out the existing soft soil to about 2m deep and replace it with locally sourced, stronger fill material.

On the south side, a piling rig will bore 864 holes into the ground and fill them with concrete to support the weight of the large earth embankments.

To build the bridge foundation we'll then drill more than 300 holes up to 10 metres into the ground, which will be lined with steel cages and filled with concrete to form piles.

Concrete caps will then be poured around the top of the piles to lock them together and provide a solid platform for the rest of the bridge to be built on.

Meet the team!

The project will be delivered as a collaboration between Major Road Projects Victoria and Decmil, an Australian owned construction company.

The project team delivering the Ison Road Overpass is a highly skilled, experienced and passionate group of:

- engineers who specialise in civil, structure, design, pavement and traffic engineering,
- environmental and sustainability scientists,

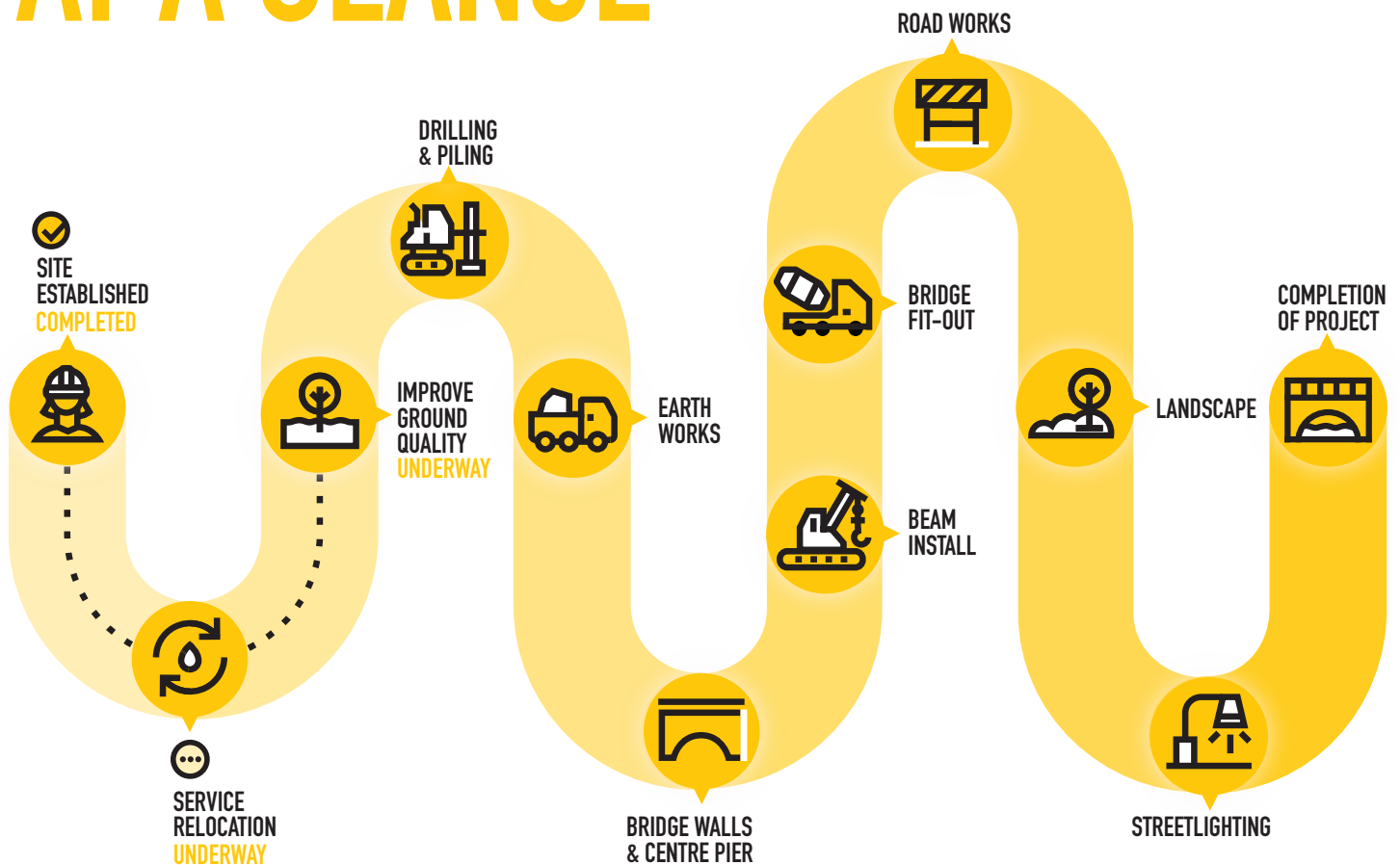
- communications specialists,
- project and financial managers.

Keeping you informed

As construction progresses, you'll see changes in your local area. We'll send out regular updates to help keep you informed. If you'd like to know more about the Ison Road Overpass visit bigbuild.vic.gov.au/ison or sign up for email and SMS updates.

The majority of our work will be completed between 7am to 5pm Monday to Friday, and some Saturdays from 7am to 1pm. We will keep any night works to a minimum to reduce disruption to the community.

AT A GLANCE



Building a bridge

Site established

Perimeter fencing is installed, temporary offices are set up and project signage is displayed. You will see machinery accessing the project area and people working on site.

Service relocation

Underground and overhead electricity, telecommunications and water services will be relocated before we start major construction so your services aren't disrupted while we build the overpass.

Ground improvement

We'll dig out existing soft soil to about 2 metres deep and replace it with layers of dirt before we construct 864 columns underground that are more suitable for fill material to build a bridge on.

Drilling & piling

We'll drill and dig more than 300 holes up to 10 metres into the ground and fill them with steel and concrete to create piles that will allow the bridge to be built on top of them.

Earth works

Trucks will bring in about 200,000 cubic metres of material to the north and south side of the railway line to build up the area that will form ramps on each side of the bridge. That's enough material to fill 80 olympic size swimming pools.

Bridge walls & centre pier

Concrete panels will be installed along the north and south sides of the bridge and at the centre pier to create walls that will support the bridge beams.

Beam installation

Thirty reinforced concrete beams about 30 metres long will be installed across the railway line to create the structural form for the Ison Road Overpass.

Bridge fit-out

We'll pour concrete to create the bridge deck, install safety screens and road barriers.

Road works

We'll place rock, kerbs, and asphalt the four-lane road, walking and cycling path that runs along the bridge and separate cycling path that runs under the overpass.

Landscaping

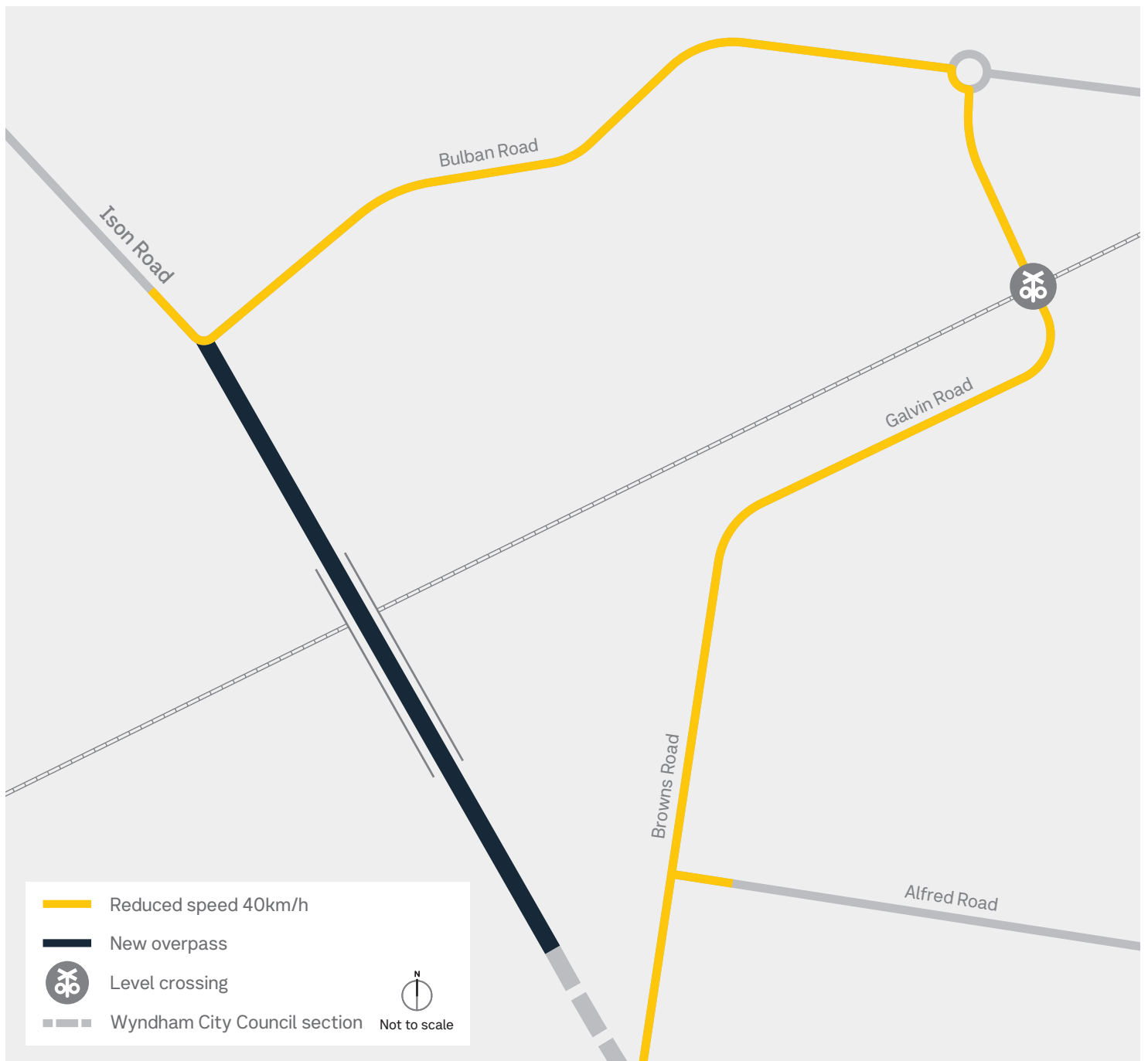
Thousands of native species trees and shrubs will be planted along the road corridor and walking and cycling path to increase tree canopy cover, provide ground cover and link in to the existing landscape.

Streetlighting

New streetlights will be installed along the overpass.

Project completion

Construction of the Ison Road Overpass will be complete, connecting to a section of road being built by Wyndham City Council.



Speed reductions

The safety of the community and our construction workers is a priority as we build the Ison Road Overpass.

Bulban Road, Galvin Road and Browns Road will remain open for cars during construction, with a reduced speed limit in place.

The speed limit is 40km/h until works are completed on:

- Bulban Road (between Ison and Galvin roads)
- Galvin Road
- Browns Road

For your safety and the safety of our workers, please observe signs and instructions from traffic controllers.

Design update

During the planning stages of the project, we asked for your feedback on the Ison Road Overpass and you told us that cycling and active transport routes were important to you.

As result of your feedback, we've updated the design to redirect a new cycling path under the new bridge and alongside the railway line to improve the experience for cyclists.

Updated artist impressions are being developed to show the new path, the materials and colour schemes that will be used, and to show how the overpass will tie into the existing landscape.

We're continuing to refine some elements of the overpass design, including the urban design and landscaping, and will share the final designs with the community in 2024.

bigbuild.vic.gov.au/roads



For languages other than English please call 9209 0147

1800 105 105 (call anytime)

contact@bigbuild.vic.gov.au



Please contact us if you would like this information in an accessible format. If you need assistance due to a hearing or speech impairment, visit relayservice.gov.au