

Construction update



Town Hall Station

June 2024

Construction of the Metro Tunnel Project's Town Hall Station has entered a new phase, including works on station entrances, fit-out of the underground station and reinstatement of community space. The Metro Tunnel opens in 2025 and will create a new end-to-end rail line from Sunbury in the west to Cranbourne/Pakenham in the south east, with bigger and more modern trains, and five new stations.

Works snapshot: June

In May, crews completed works at the Swanston Street intersections of Flinders Lane and Collins Street to widen three pedestrian crossing kerbs. These works are designed to make Town Hall Station's surrounding area more accommodating to increased pedestrian traffic once the Metro Tunnel opens. We thank nearby businesses and residents for their patience while we undertook these works.

Construction works within the Town Hall Station precinct during June 2024 include:

- Station entrance construction and underground build-out works at the City Square, Flinders Quarter and Federation Square sites
- Campbell Arcade restoration works including fit-out of the underground passenger connection to Flinders Street Station
- Lift installations within the Degraes Subway at Flinders Street Station
- Works to remove site sheds and gantries and install an underground stormwater reuse tank on Swanston Street
- Stormwater drainage connection works on Flinders Street
- Train testing through the tunnel.

Further information on these works can be found overleaf or at metrotunnel.vic.gov.au

Business support

While the new Town Hall Station will be a significant boost for the local area, construction activities can impact local businesses. In response to this, our Business Support Team assists businesses through the disruption and any permanent changes that will take place.

Please see the promotion in this notification for **Alpha Barbers**, located at **6/241 Flinders Lane, Melbourne**. We look forward to promoting more local businesses as the project progresses.



Sign up for updates
Subscribe for email and SMS updates
at metrotunnel.vic.gov.au/subscribe

Construction partner:



Cross
Yarra
Partnership



When are we working?



Normal construction hours

7am to 6pm, Monday to Friday
7am to 1pm, Saturdays



Out of hours

Some works are required to take place out of normal construction hours



24 hours

24 hour works are sometimes required during peak construction activities



Concept image - Town Hall Station concourse

Upcoming works in your area

City Square site

**24-hours, Monday to Friday
7am to 2pm, Saturdays (as required)**



When Town Hall Station opens, the City Square station entrance will lead into an expansive underground passenger foyer, with lifts and escalators transporting passengers down to the customer and ticketing area, towards the train platforms.

Above ground, City Square will be reinstated as a public gathering space, fully landscaped for the whole community to enjoy.

Works occurring this month include:

- Construction of the passenger concourse which involves the use of the tower cranes, concrete pumps, and other tools and equipment to undertake steel fixing, waterproofing, formwork installation and concrete pours
- Installation of infrastructure to support mechanical, electrical and plumbing services
- Concrete trucks will access the loading bays on Collins Street and Flinders Lane. Concrete pours involve regular deliveries, the use of concrete trucks, concrete pumps and concrete finishing equipment
- Major concrete pours can take between 10-20 hours with all concrete pumps in use to achieve the volume of concrete required. Concrete pours must be continuous to ensure structural integrity and therefore may continue outside of normal construction hours
- Ventilation equipment operation will be required during all works below ground, and site lighting will be required for evening and overnight works

- There will be regular truck movements to deliver and remove equipment and construction materials via the Collins Street and Flinders Lane loading bays
- There will be some service investigation works taking place in the Collins Street loading bay in early June
- There will be a full westbound closure of Collins Street at the City Square site entrance between Russell Street and Collins Street and partial footpath closure for one night in June during service investigation works.
- These works are expected to generate low to medium levels of noise.

Flinders Street drainage works

**24-hours, from 9.30am Thursday 20 June
For up to 3 weeks**



- From late June for up to three weeks, stormwater drainage connection works will take place on Flinders Street
- These works will include the use of an excavator with hammer attachment, saw cutting and a non-destructive digging truck and these works will generate some periods of high level noise and vibration
- During these works the Flinders Street westbound lane will be closed between Swanston and Elizabeth streets. There will also be a weekend closure of tram stop 5 at the intersection of Flinders Street and Swanston streets, from **10.30pm Friday 21 June to 11.30am Sunday 23 June**

Tram service changes

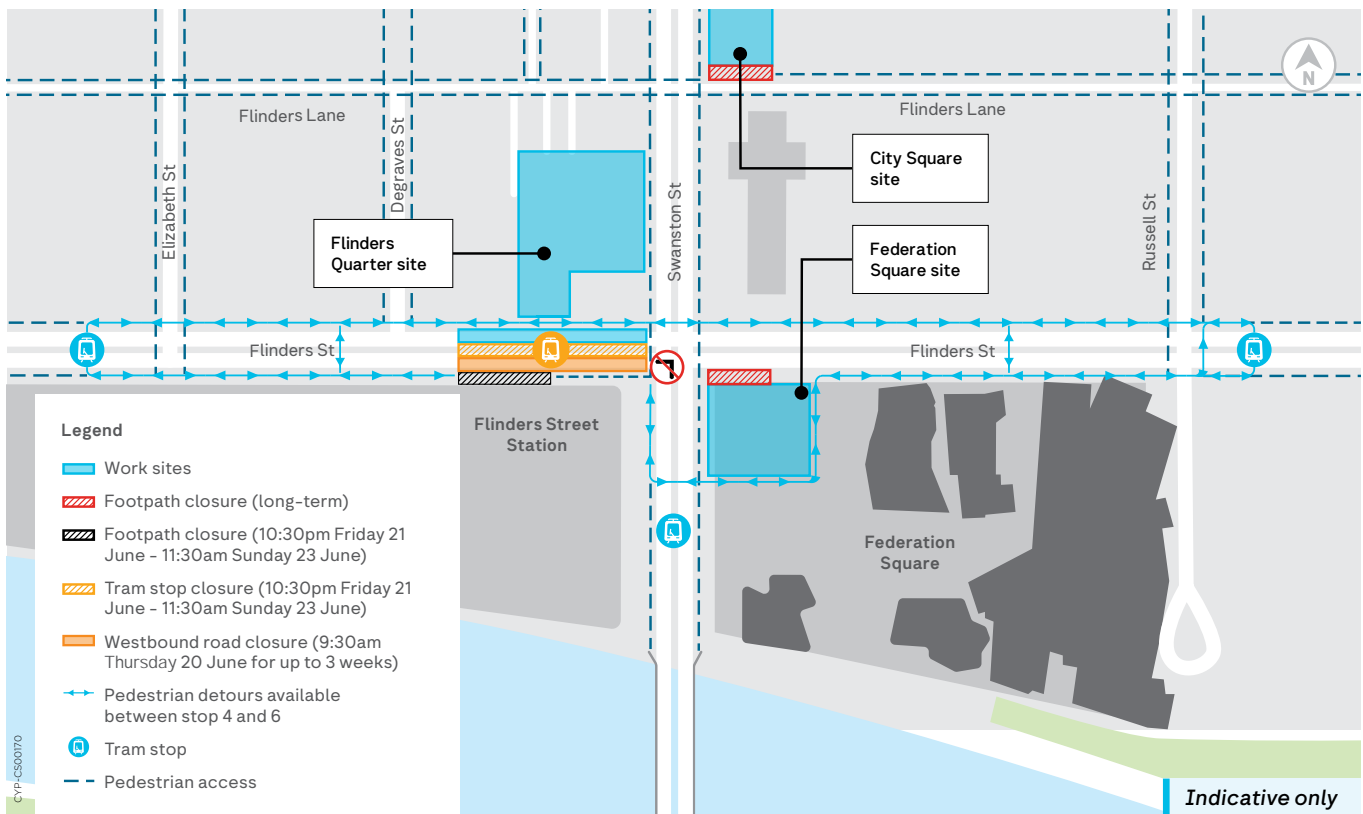
To safely undertake drainage works on Flinders Street, tram stop 5, located at the Flinders Street and Swanston St intersection, will be closed from **10.30pm Friday 21 June to 11.30am Sunday 23 June**. During this time, passengers will need to walk between Stop 4 (Elizabeth Street) and Stop 6 (Russell Street) to continue their journey.

Pedestrian detours can be seen on the map below.

The following tram routes will be impacted:

- Route 70 trams will run a shortened service between Wattle Park and Stop 6 (Russell Street)
- Route 75 trams will run an altered service between Vermont South and Waterfront City Docklands, with no trams between Stop 6 (Russell Street) and Stop 4 (Elizabeth Street).
- Route 35 (City Circle) trams will not run.

Please allow extra travel time. Visit ptv.vic.gov.au for more information.



- During the tram stop closure, a section of the southern footpath will be closed. During all other times, the footpath will be narrowed with pedestrian access maintained
- Access to businesses will be maintained at all times.

Flinders Quarter site

**24-hours, Monday to Friday
7am to 11pm, Saturdays and Sundays
(as required)**



When Town Hall Station opens, the station entrance building located on Swanston and Flinders streets will lead into an expansive underground passenger foyer, with lifts and escalators transporting passengers down to the customer and ticketing area, towards the train platforms.

Works occurring this month include:

- Construction of the passenger concourse which involves the use of the tower crane, mobile surface cranes, concrete pumps, and other tools and equipment to undertake shotcreting, steel fixing, waterproofing, formwork installation and concrete pours including hydro scabbling
- Installation of infrastructure to support mechanical, electrical and plumbing services
- Works are continuing to complete capping beam demolition
- There will be an overnight closure on 4 June from 1am to 5am of Swanston Street in both directions between Flinders Street and Flinders Lane during temporary tram pole installation works. The western footpath at the site entrance will also be closed during this time.

- Concrete pours involve regular deliveries via the loading zone on Flinders Street, and the use of concrete trucks, concrete pumps and concrete finishing equipment
- Major concrete pours can take between 10-20 hours with all concrete pumps in use to achieve the volume of concrete required. Concrete pours must be continuous to ensure structural integrity and therefore may continue outside of normal construction hours
- Ventilation equipment operation will be required during all works below ground, and site lighting will be required for evening and overnight works
- There will be regular truck movements to deliver and remove equipment and construction materials via the Flinders Street loading zone and Swanston Street driveway
- Due to road permit requirements, large plant will occasionally be delivered and demobilised from the site outside of standard construction hours
- Works have commenced on the above ground structures within the site. This includes the construction of the exhaust and ventilation tower and a ten storey structure on the western side of the site near 238 Flinders Street. These structures are being constructed using a lifting/climbing form method, which involves a hydraulic system that raises or 'lifts' once the core inside has been poured. These works include steel fixing and concrete pours, and will take place until midnight weeknights and until 6pm Saturdays.

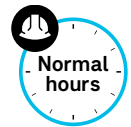
Swanston Street footpath closure

Mid-June to September 2024

- As we progress with constructing a Town Hall Station entrance right next to the Young and Jackson, a Swanston Street western footpath closure will be required outside the Flinders Quarter site from mid-June to September 2024
- Works will include the placement of a temporary tram pole in early June, followed by the removal of overhead site offices and gantries, installation of an underground stormwater reuse tank, the construction of the above ground station entrance, and kerb, repaving and landscaping works
- Some works are 24-hours and will generate periods of noise and vibration
- Access to businesses will be maintained



Flinders Street Station



7am to 6pm, Monday to Friday
7am to 1pm, Saturdays

- Works to restore Campbell Arcade and construct the future underground pedestrian connection between Town Hall Station and Flinders Street Station, known as the 'Flinders Link', are ongoing
- Works to install lifts between the Degraeves Subway and platform level at Flinders Street Station will continue. This work will be carried out behind the blue hoarding on the Flinders Street Station platforms.

Federation Square site



24-hours, Monday to Sunday

Federation Square will be an entrance point to Town Hall Station, providing passengers with new access to this vibrant public space and the nearby arts and sporting precincts.

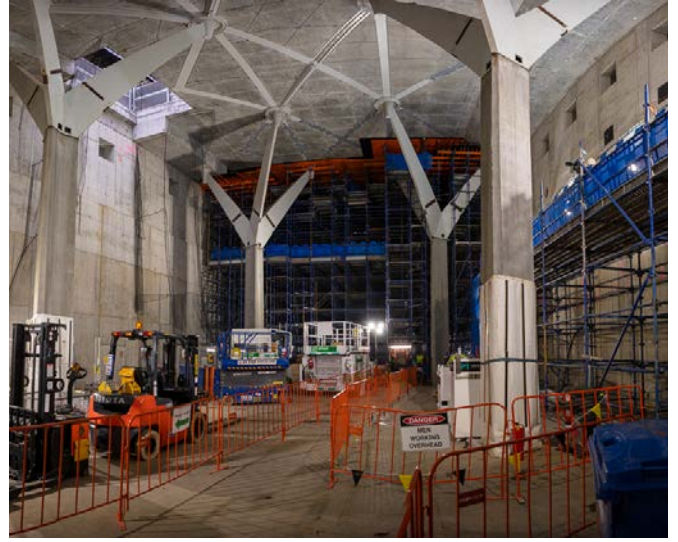
Works occurring this month include:

- Construction and fit-out of the station passenger areas and operational rooms, including installation of waterproofing materials, steel, and concrete
- There will be an overnight close of the westbound lane of Flinders Street outside the Federation Square site on Monday 3 June during service investigation works. The closure will be in place from Russell Street to Swanston Street
- There will be regular truck movements to deliver and remove equipment and construction materials
- Works to excavate the escalator shaft at Federation Square are ongoing. This work is taking place within the acoustic shed; however, some excavation works will include the use of an excavator with a hammer attachment and are expected to generate some periods of high-level noise
- As part of this work an extraction fan was also installed so that the team can work safely to excavate underground. The fan will generate some periods of medium level noise and vibration.

Flinders Street eastbound

As major construction continues at Town Hall Station, Flinders Street eastbound will remain closed to traffic between Elizabeth and Swanston streets, until late 2024 as per current arrangements.

We thank the community for their patience throughout this long-term closure.



The ceiling for Town Hall Station's concourse at City Square is taking shape, with 8 columns standing up to 13.5 metres high, underneath one of the recently poured ground floor concrete slabs. This is where passengers entering from Collins Street will be able to touch on and make their way 30 metres below ground to the station platform.

Greater Western Water works

Greater Western Water are renewing the water main in Swanston Street (between Collins Street and Flinders Street) as it is reaching the end of its operational life.

Works will start in the coming weeks, taking place 8pm to 6am Sunday night to Friday morning, and will take about eight weeks to complete. Residents and businesses will be notified when a start date has been determined.

During works, there will be traffic impacts and controllers will help vehicles, pedestrians and cyclists move safely through the area. Water and sewerage services will not be interrupted. For more information, contact Greater Western Water on 13 44 99.

Find out more

metrotunnel.vic.gov.au

1800 105 105 (call anytime)



For languages other than English
please call (03) 9209 0147



Please contact us if you would like this information in an accessible format. If you need assistance due to a hearing or speech impairment, visit relayservice.gov.au



ALPHABARBERS since 2011

@ FLINDERS LANE

**ALPHA BARBERS HAS NOW RE-OPENED ON
SCOTT ALLEY AFTER A BRIEF BREAK WHILE
CONSTRUCTION WORKS TOOK PLACE.**

**A SHORT WALK FROM SWANSTON STREET ONTO FLINDERS LANE TO SCOTT ALLEY,
ALPHA BARBERS PROVIDE TRADITIONAL, QUALITY MEN'S GROOMING SERVICES, WITH
NO APPOINTMENT NECESSARY.**

ALPHABARBERS.COM.AU

☎ 03 9042 1154

📍 @ALPHABARBERSMELBOURNE

6/241 FLINDERS LN,
MELBOURNE VIC 3000