



Arden and Parkville Community Reference Group

Meeting 56

Friday 17 May 2024



OFFICIAL: Sensitive

CRG Agenda

Friday 17 May 2024



Item	Topic	Presenter
1	Introductions and welcome <ul style="list-style-type: none">• Outstanding Actions and Issues Register• Zoom meeting housekeeping	Chris Lovell
2	Project-wide construction update	CYP
3	North Melbourne construction update	RPV
4	Parkville construction update	CYP
5	General feedback and items for future discussion	CYP
6	Other business	Chris Lovell

OFFICIAL: Sensitive

Presenter: Chris Lovell



Welcome and introductions

Presenter: Chris Lovell

OFFICIAL: Sensitive



Minutes and actions

Presenter: Chris Lovell

OFFICIAL: Sensitive



Project-wide update

Presenter: Danielle Smits

OFFICIAL: Sensitive

Project-wide update



Metro Tunnel Project Update - May 2024 v02 on Vimeo

OFFICIAL: Sensitive



North Melbourne construction update

Presenter: Rob Mair

OFFICIAL: Sensitive

Arden Station



- Façade artwork ceramic now installed on eastern side
- Bus stop construction on Laurens Street now complete
- Passenger information displays to be installed when bus route comes into use
- Occupancy permit now granted Arden Station

Presenter: Rob Mair



Parkville construction update

Presenter: Danielle Smits

OFFICIAL: Sensitive

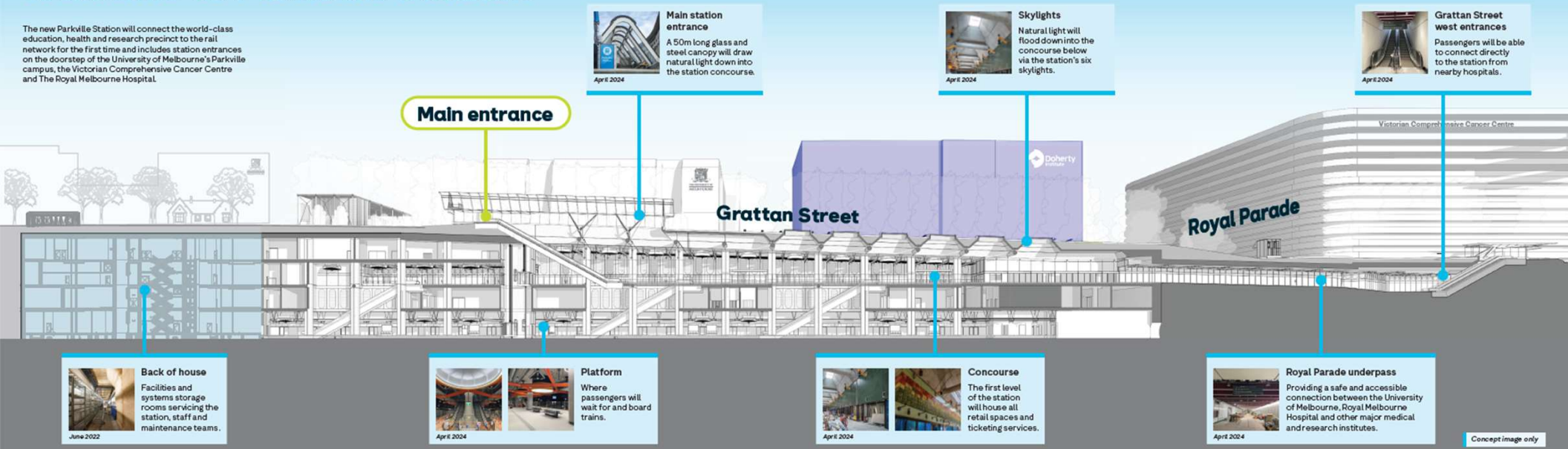


Parkville Station overview



Welcome to Parkville Station!

The new Parkville Station will connect the world-class education, health and research precinct to the rail network for the first time and includes station entrances on the doorstep of the University of Melbourne's Parkville campus, the Victorian Comprehensive Cancer Centre and The Royal Melbourne Hospital.



Main station entrance
 A 50m long glass and steel canopy will draw natural light down into the station concourse.
 April 2024

Skylights
 Natural light will flood down into the concourse below via the station's six skylights.
 April 2024

Grattan Street west entrances
 Passengers will be able to connect directly to the station from nearby hospitals.
 April 2024

Main entrance

Grattan Street

Royal Parade

Back of house
 Facilities and systems storage rooms servicing the station, staff and maintenance teams.
 June 2022

Platform
 Where passengers will wait for and board trains.
 April 2024

Concourse
 The first level of the station will house all retail spaces and ticketing services.
 April 2024

Royal Parade underpass
 Providing a safe and accessible connection between the University of Melbourne, Royal Melbourne Hospital and other major medical and research institutes.
 April 2024

Concept image only

Surface works



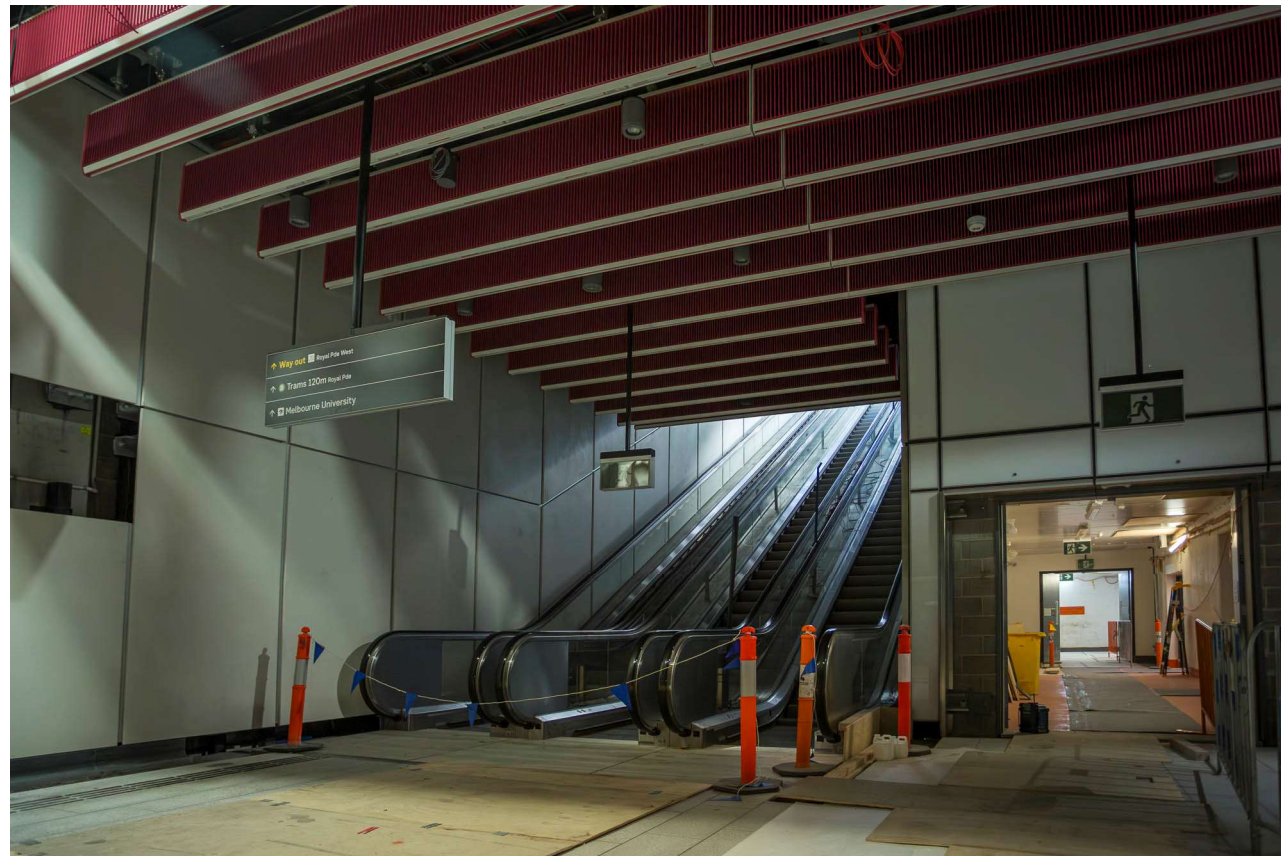
- Ongoing surface works include line-marking, landscaping and defect rectification activities
- Fit-out and façade work on station structures, including station entrances adjacent to the Royal Melbourne Hospital, Peter MacCallum Cancer Centre, on Royal Parade and Grattan Street, and within the station box
- Signal works on the southern corner of Wreckyn Street and Flemington Road are now complete
- The site footprint has been reduced to open footpaths and increase connectivity throughout the area.



Station box activities



- Fit out, testing and commissioning of station mechanical, electrical and plumbing systems is ongoing, including at the station entrances, ancillary buildings, tunnel ventilation shafts, chiller plant and within the station box
- Ongoing testing and commissioning of train and tunnel systems
- Work inside the tunnel will continue 24/7.



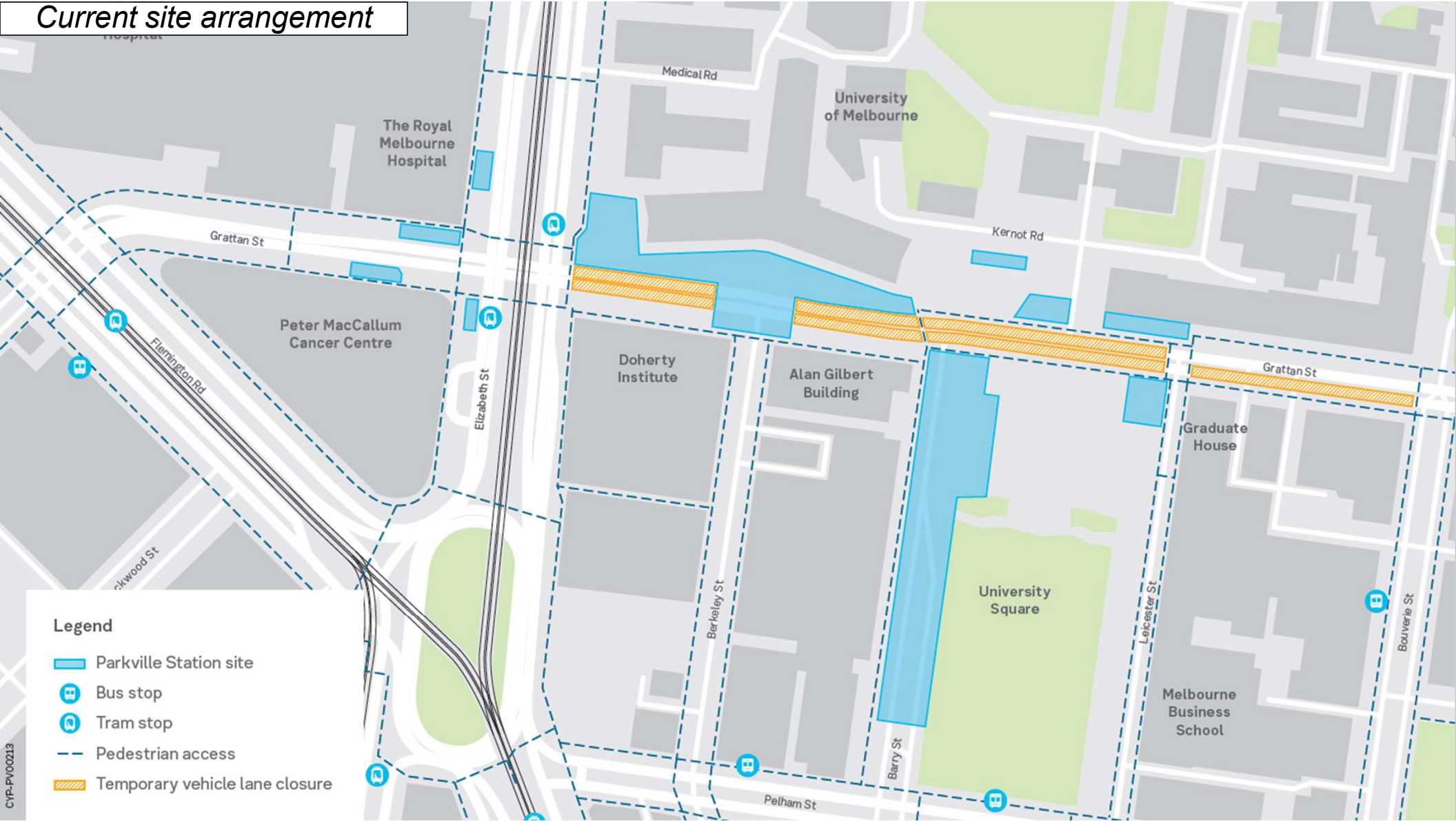
OFFICIAL: Sensitive

Grattan Street reopening

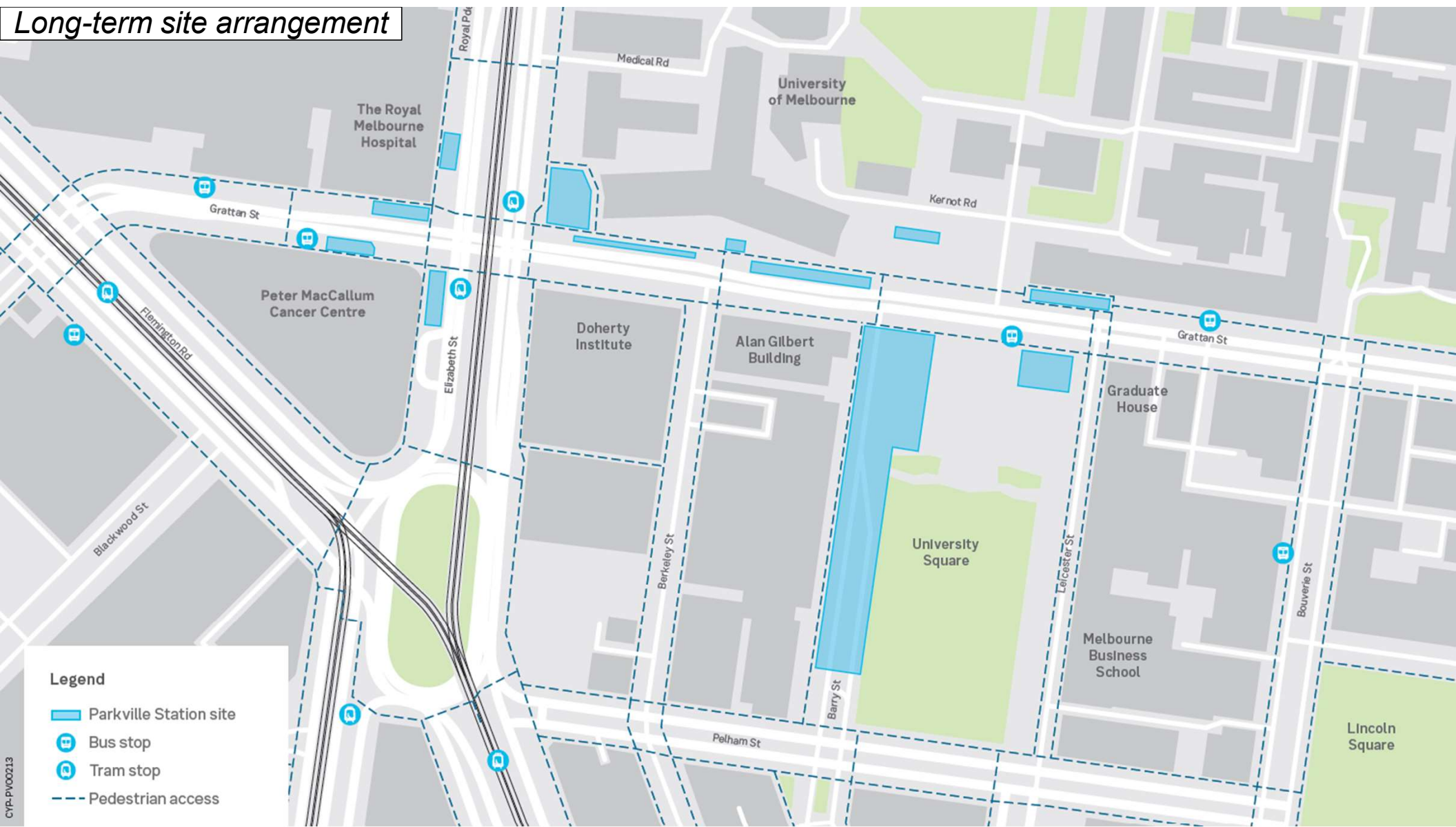


- Trial bus operations have been scheduled for Monday 20 May. The buses will travel both eastbound and westbound with traffic control measures in place. Site barriers and fencing will be temporarily adjusted to allow for bus access
- The reopening of the **Grattan Street west** eastbound lane will occur once the power supply for the mid-block crossing traffic signals has been obtained and the necessary approvals have been granted
- The reopening of **Grattan Street east** is currently planned for late June or July, subject to the defect and handover process.

Current site arrangement



Long-term site arrangement

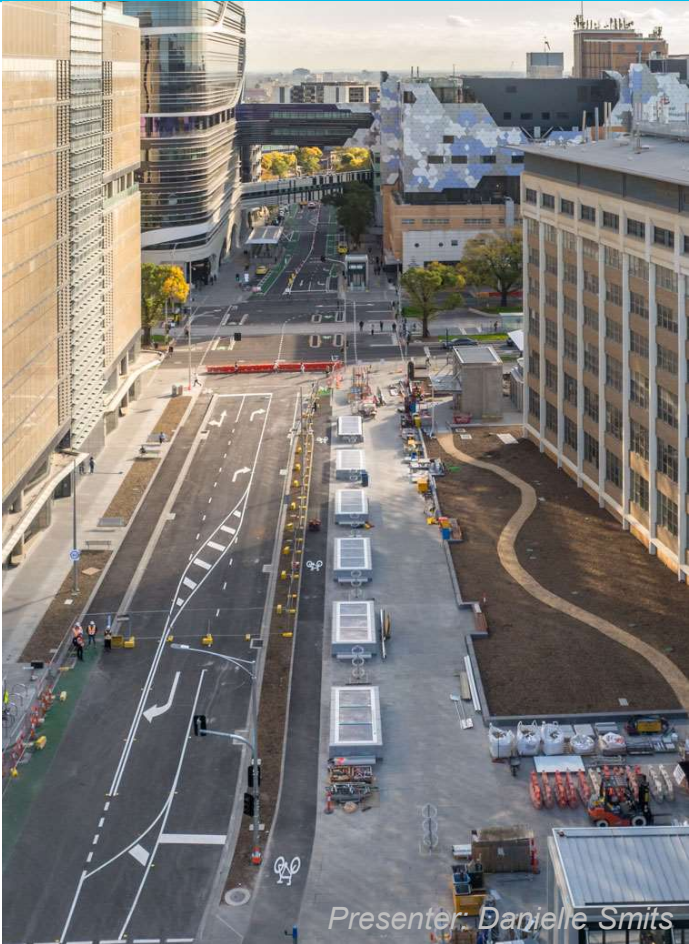


- Legend**
- Parkville Station site
 - Bus stop
 - Tram stop
 - Pedestrian access



Presenter: Danielle Smits

Grattan Street east



Presenter: Danielle Smits

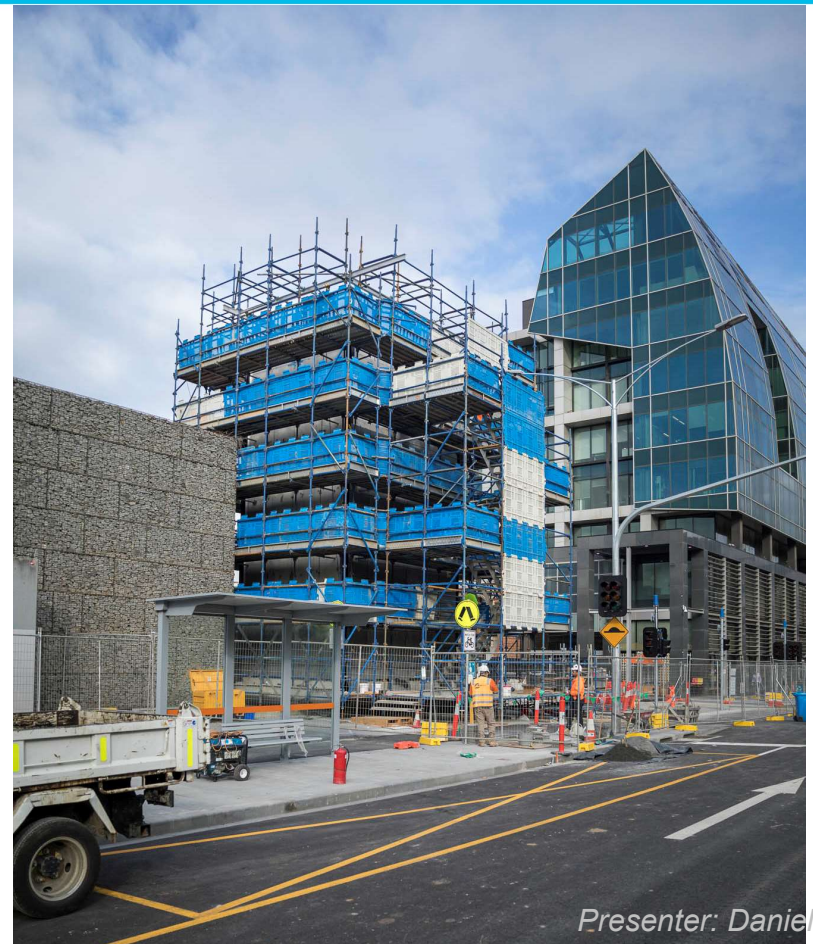
Grattan Street east



TVS east and west



OFFICIAL: Sensitive



Presenter: Danielle Smits



















↑ **Way out**  Royal Pde West

↑  Trams 120m Royal Pde

↑  Melbourne University



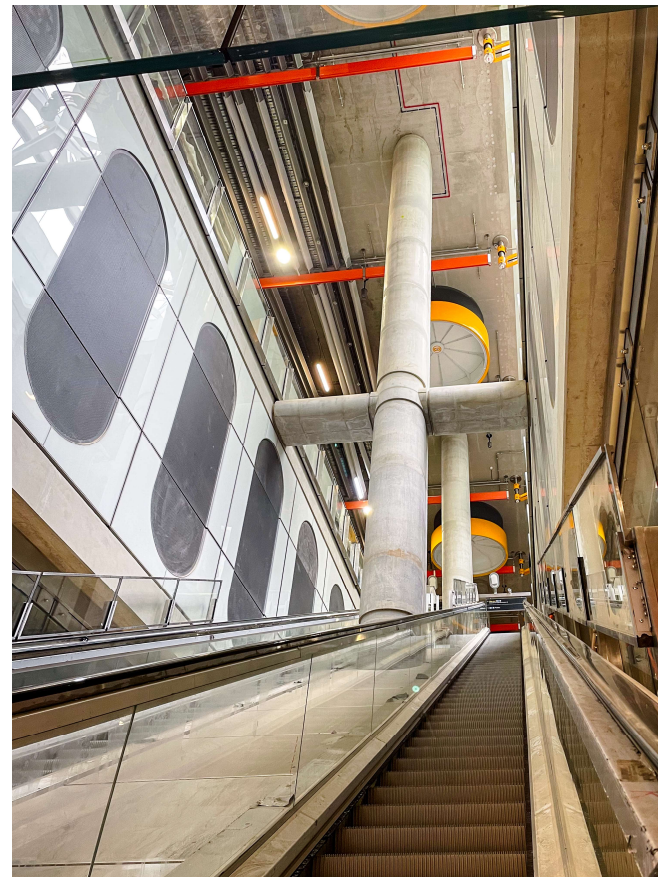








Platform



OFFICIAL: Sensitive



Program

Presenter: Danielle Smits

OFFICIAL: Sensitive

Program

Timing is indicative and subject to change.



Look ahead for 2024

	May	June	July	August
Testing and commissioning				
Fit out and defect rectification works				
Landscaping works	—	✓		

CYP-PV00217

OFFICIAL: Sensitive

Presenter: Danielle Smits



Media update

Presenter: Danielle Smits

OFFICIAL: Sensitive

Media update

- On Wednesday 15 May, Premier Jacinta Allan and Minister for Transport Infrastructure Danny Pearson announced the completion of major construction at Parkville Station
- The Premier and Minister were joined by Executives from surrounding institutions.

OFFICIAL: Sensitive





Stakeholder Day

Presenter: Danielle Smits

OFFICIAL: Sensitive

Parkville

Stakeholder Day



- An event to celebrate the completion of major construction at Parkville Station will be held on Tuesday, 11 June 2024
- Stakeholders will receive event details directly.



OFFICIAL: Sensitive



Other business

Presenter: Chris Lovell

OFFICIAL: Sensitive

Next meeting



– Tuesday 30 July 2024 (Zoom)