

# Works Notification



AUGUST 2024

## Upcoming works on Wurundjeri Way, Dudley Street and Flinders Street

### When we'll be working

We'll be working from **Monday 12 August to Tuesday 24 September 2024**.

### What we'll be doing

The West Gate Tunnel Project will be carrying out works along Wurundjeri Way, Dudley Street and Flinders Street from mid-August to late September. These works will include the installation of street lighting and precast wall panels, asphaltting, line marking and signage installation.

To reduce impacts to traffic flow in the area, the works will be carried out at night, and we'll need to temporarily close lanes and carriageways on Wurundjeri Way, Dudley and Flinders streets. During the day, the lanes and carriageways will re-open to traffic.

### Works and impacts

#### Dudley Street and Wurundjeri Way intersection

Dudley Street intersection and the north and southbound lanes of Wurundjeri Way, between Dudley and Bourke Street will be closed to install street lighting on:

- Monday 12 August, from 8pm to 5am
- Tuesday 13 August, from 8pm to 5am.

#### Wurundjeri Way

All northbound lanes between Bourke and Dudley streets will be closed to install precast wall panels and street lighting on:

- Wednesday 14 August, from 8pm to 5am
- Thursday 15 August, from 8pm to 5am.

All northbound lanes between Aurora Lane and Bourke Street will be closed for profiling, asphaltting and line marking of the final road surface on:

- Tuesday 17 September, from 8pm to 5am
- Wednesday 18 September, from 8pm to 5am
- Thursday 19 September, from 8pm to 5am.

Wurundjeri Way will be closed in both directions between Dudley and Bourke streets for gantry installation on:

- Monday 23 September, from 8pm to 5am
- Tuesday 24 September, from 8pm to 5am.

#### Flinders Street, Aurora Lane and Wurundjeri Way

*Please note, Aurora Lane will be closed from Wurundjeri Way during profiling and asphaltting works. Local access will be maintained to Aurora Lane via Collins Street at all times.*

Flinders Street westbound, Aurora Lane northbound and Wurundjeri Way northbound will be fully closed for profiling, asphaltting and line marking of the final road surface on:

- Tuesday 17 September, from 8pm to 5am
- Wednesday 18 September, from 8pm to 5am
- Thursday 19 September, from 8pm to 5am.

#### La Trobe Street – Pedestrian footpath

The southern footpath on La Trobe Street between Spencer Street and LaCrosse Close will be closed for gantry installation works on:

- Monday 23 September, from 8pm to 5am
- Tuesday 24 September, from 8pm to 5am.

Sign up for updates at [westgatetunnelproject.vic.gov.au](https://westgatetunnelproject.vic.gov.au)

In partnership with



## Changes to the way you travel

Motorists will be able to detour around Wurundjeri Way via Harbour Esplanade, Bourke Street, Spencer Street and Dudley Street. Please see detour maps in this notification.

During this time, businesses on Wurundjeri Way will continue to operate, with access maintained.

Traffic management will be in place, including signage to guide traffic through the area.

## Noise

You may notice construction noise, including intermittent noise at night.

Depending on the type of works and if works are expected to create extra noise, the West Gate Tunnel Project team will be in contact with residents and businesses directly.

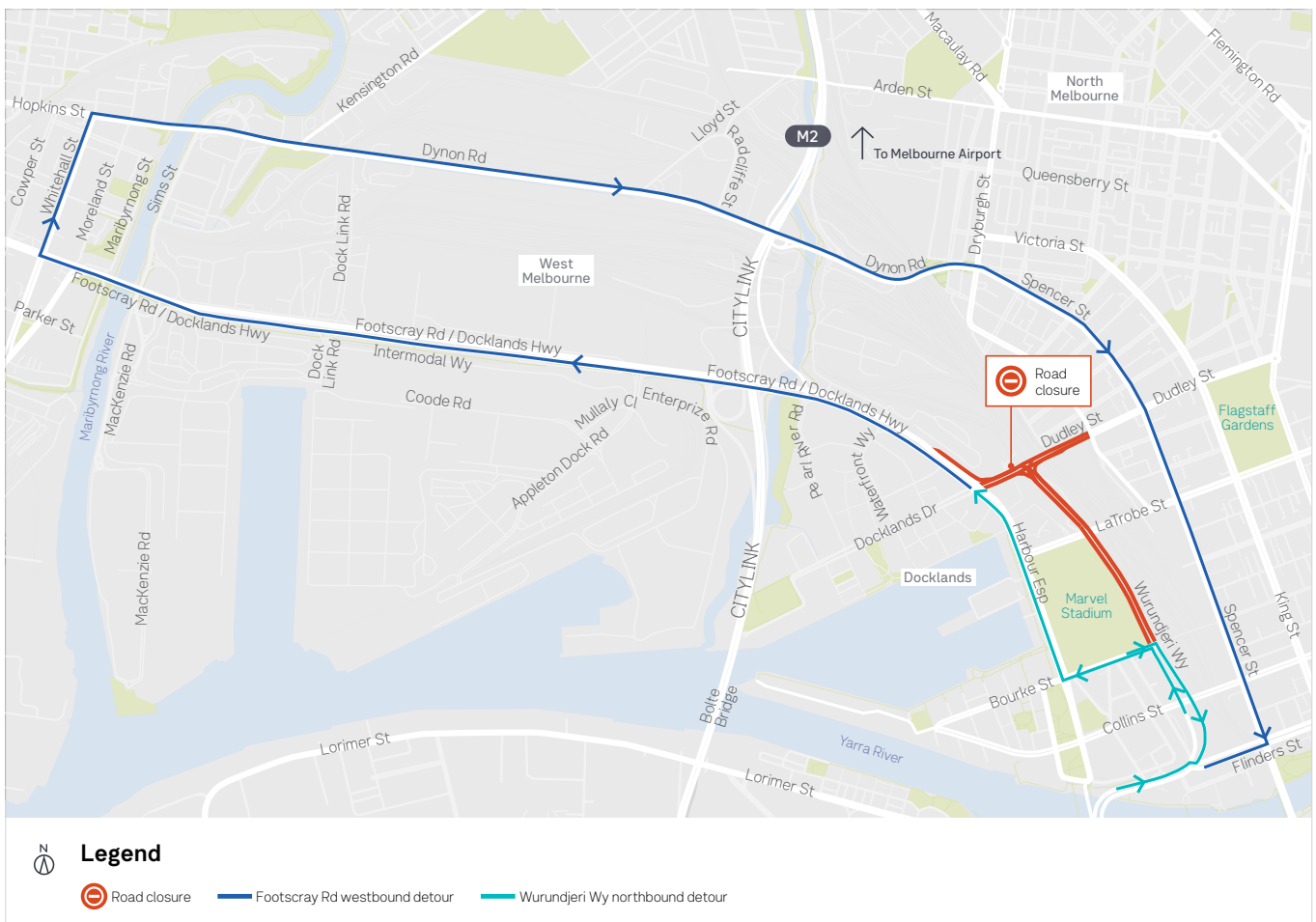
## More information

Please note these works, dates and details may be subject to change, and there may be other disruptions to traffic during this time. For the latest information and to plan ahead, visit [bigbuild.vic.gov.au/disruptions](http://bigbuild.vic.gov.au/disruptions)

If you have any questions or would like to receive updates on this work via email, please call us on **1800 105 105** and ask for the 'East Zone'.

We appreciate our work can be disruptive and thank you for your patience while we build the West Gate Tunnel Project.

## Dudley Street intersection and Wurundjeri Way carriageway closure



[westgatetunnelproject.vic.gov.au](http://westgatetunnelproject.vic.gov.au)

1800 105 105 (call anytime)



[info@wgta.vic.gov.au](mailto:info@wgta.vic.gov.au)

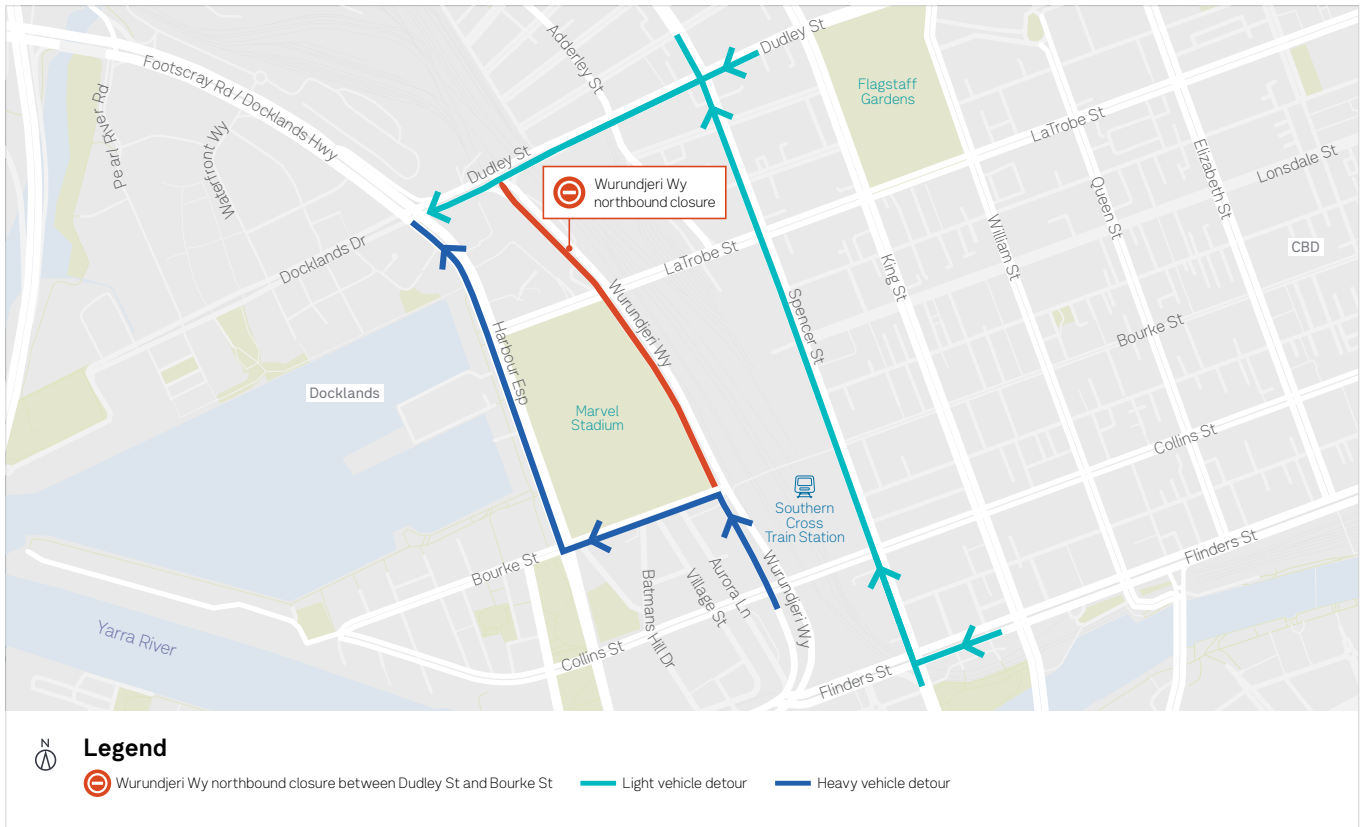


For languages other than English please call 9209 0147

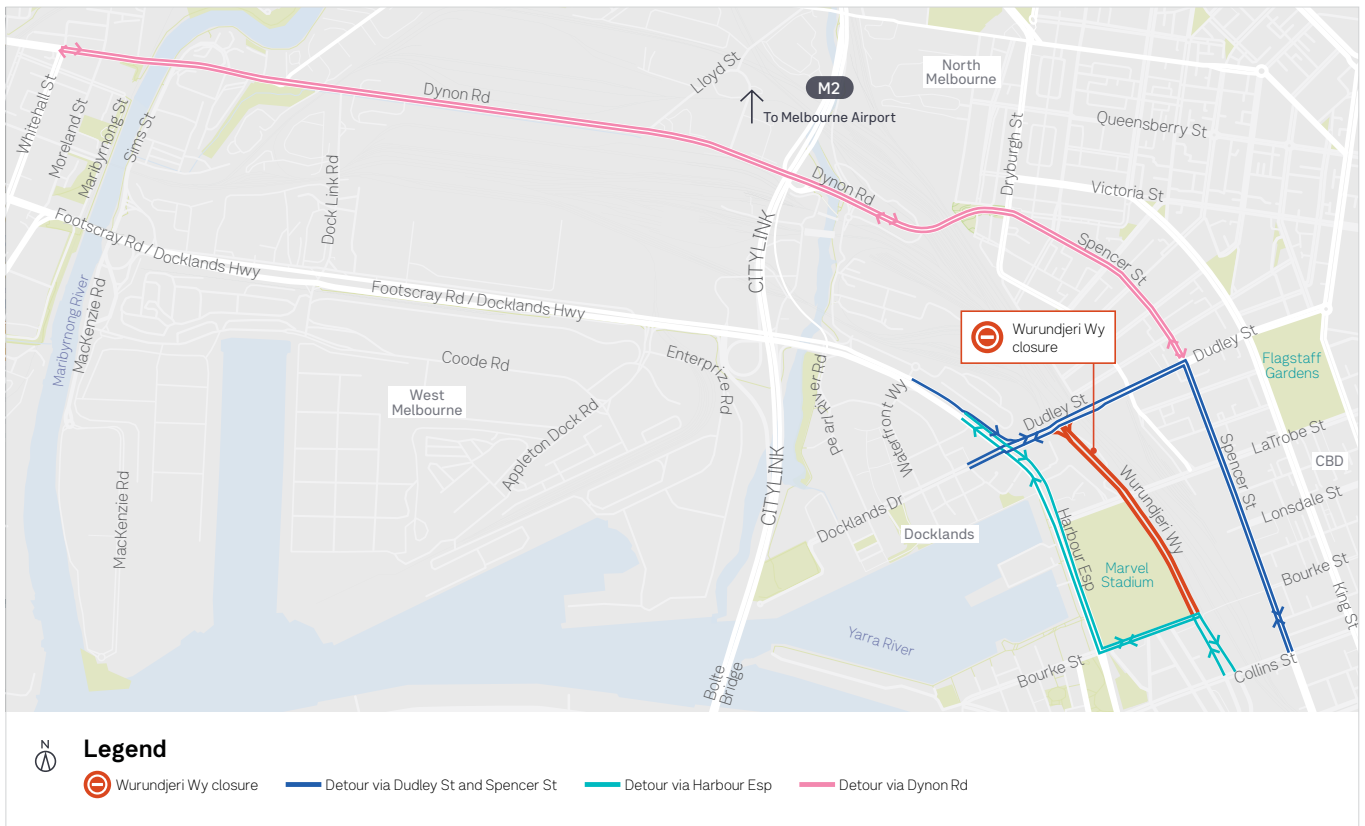
Please contact us if you would like this information in an accessible format. If you need assistance due to a hearing or speech impairment, visit [relayservice.gov.au](http://relayservice.gov.au)



## Wurundjeri Way northbound closure



## Wurundjeri Way closure in both directions



[westgatetunnelproject.vic.gov.au](http://westgatetunnelproject.vic.gov.au)

1800 105 105 (call anytime)



[info@wgta.vic.gov.au](mailto:info@wgta.vic.gov.au)

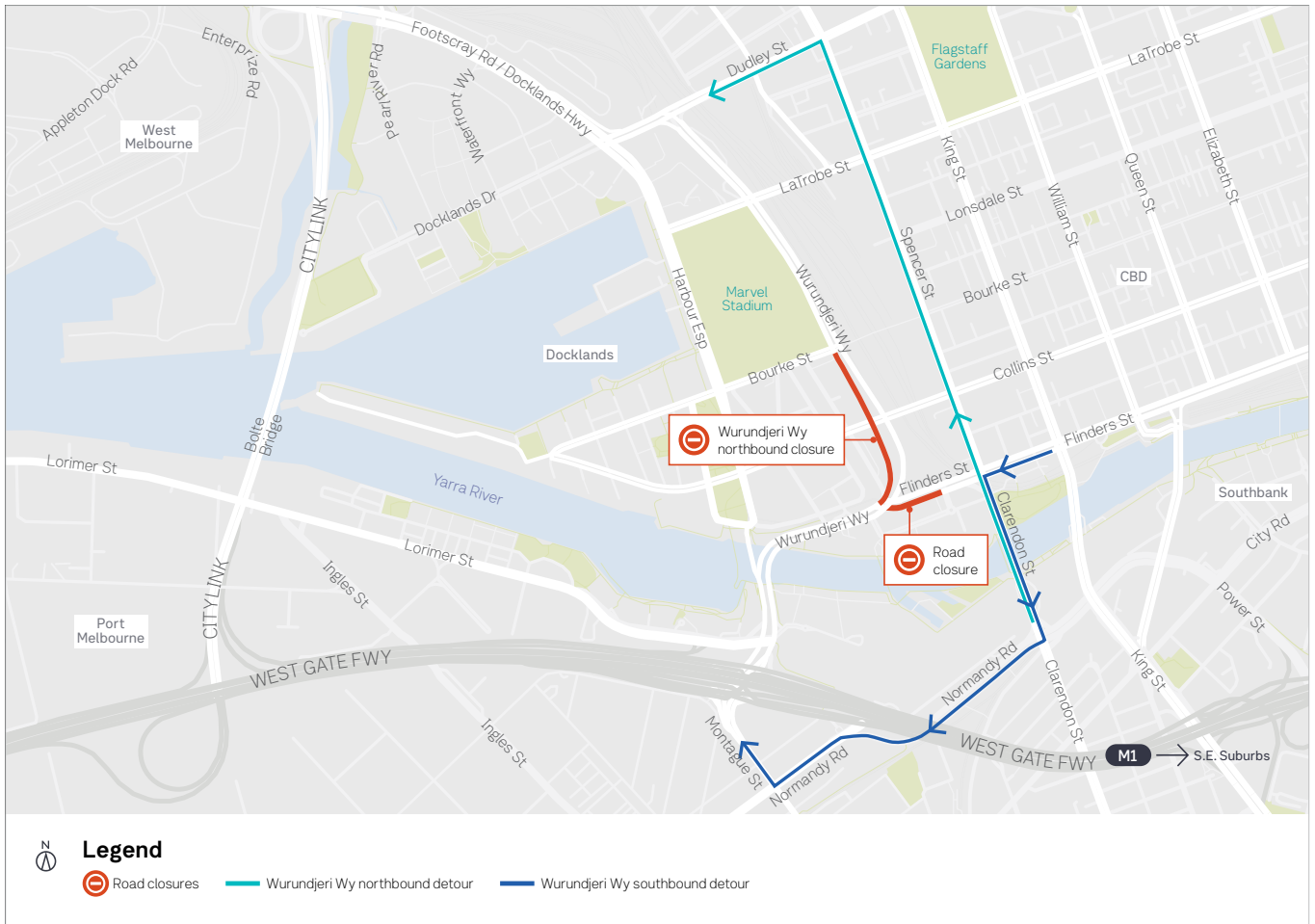


For languages other than English please call 9209 0147

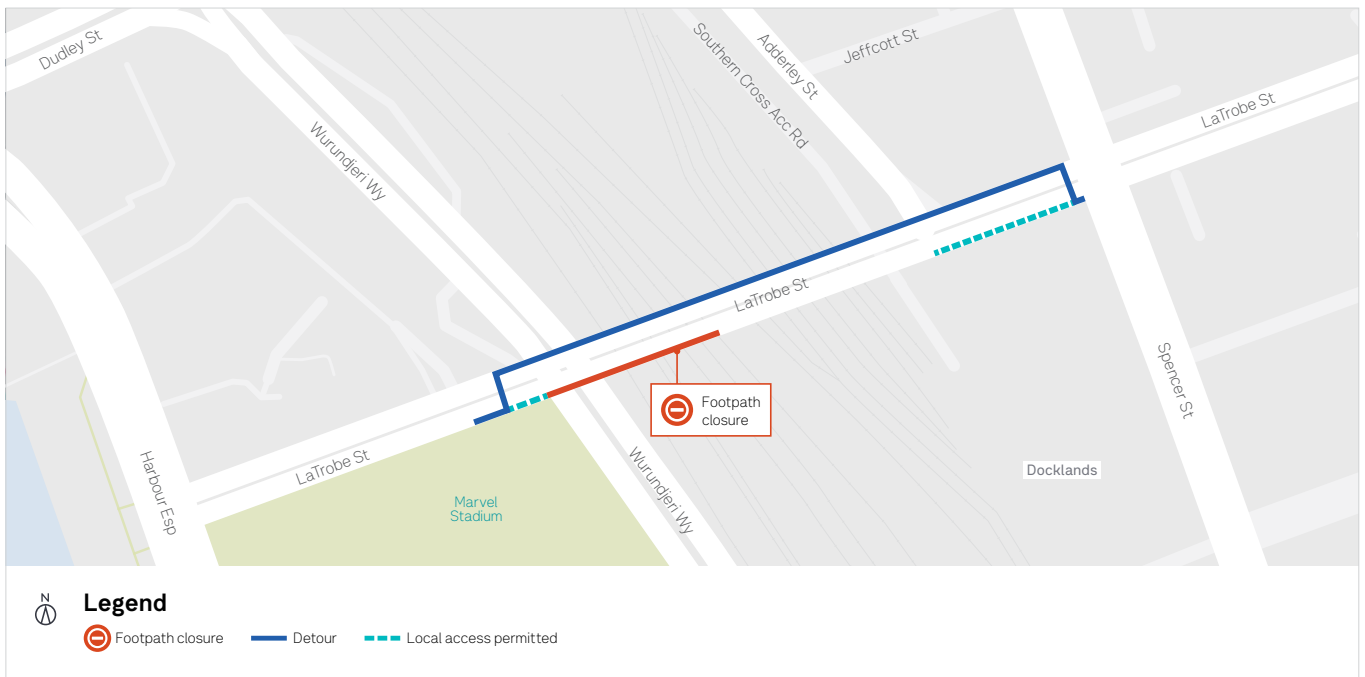
Please contact us if you would like this information in an accessible format. If you need assistance due to a hearing or speech impairment, visit [relayservice.gov.au](http://relayservice.gov.au)



## Flinders Street westbound, Aurora Lane and Wurundjeri Way northbound closure



## La Trobe Street – pedestrian footpath closure



[westgatetunnelproject.vic.gov.au](http://westgatetunnelproject.vic.gov.au)

1800 105 105 (call anytime)



[info@wgta.vic.gov.au](mailto:info@wgta.vic.gov.au)



For languages other than English please call 9209 0147

Please contact us if you would like this information in an accessible format. If you need assistance due to a hearing or speech impairment, visit [relayservice.gov.au](http://relayservice.gov.au)

