



IMPROVING TRAVEL TIMES

MICKLEHAM ROAD UPGRADE – STAGE 1

SEPTEMBER 2024



We're building extra lanes, upgrading key intersections and installing new traffic lights on Mickleham Road to reduce congestion and improve safety and travel times.

What's been happening

Since our last update, we've:

- finished upgrading the intersection at Dellamore Boulevard
- finished building the new eastbound lanes on Somerton Road near Mickleham Road, and shifted traffic onto the new lanes
- finished sections of the new walking and cycling path on Somerton Road near Mickleham Road
- finished relocating gas services between Hillview Road and Dellamore Boulevard
- opened the new connection between Horizon Boulevard and Montenegro Road
- started drainage works at Hillview Road, in preparation for intersection upgrade works
- started building the new westbound lanes on Somerton Road at the intersection of Mickleham Road.



Sign up for updates
Subscribe for email and SMS updates
at bigbuild.vic.gov.au/roads-subscribe



What we're doing and when

In September, we'll:

- finish traffic signal works at Aitken College
- finish guardrail, traffic islands and walking and cycling paths on the southbound lanes between Hillview Road and Garibaldi Road
- continue building the new traffic light intersection at Mickleham and Somerton roads, including drainage, pavement and guardrail works
- continue upgrading the intersection at Hillview Road and Mickleham Road
- continue works to merge the new and existing lanes on Somerton Road, near Fleetwood Drive
- start upgrading the intersection at Blossom Drive and Somerton Road
- start building the new centre median on Mickleham Road, south of Somerton Road.

Most of these works will take place from 7am to 6pm, Monday to Friday and 7am to 1pm, Saturdays. At times we'll need to work outside of these hours to minimise impacts on traffic during the day. We'll let you know ahead of time if you'll be affected.

More lanes in less time

Motorists in Greenvale will enjoy reduced congestion, improved travel times and more reliable journeys as early as January 2025, with major works on Stage 1 of the Mickleham Road Upgrade set to be completed a full 6 months ahead of schedule.

The upgrade, originally slated to be completed in mid-2025, will see extra lanes in each direction between Somerton Road and Dellamore Boulevard, new traffic lights at Aitken College, upgraded intersections at Hillview Road and Dellamore Boulevard, and a new intersection at Somerton Road.

Crews on the project have gained major ground in the first half of 2024, upgrading intersections at Greenvale Gardens Boulevard and Aitken College; moving traffic onto new northbound lanes between Somerton Road and Dellamore Boulevard; and starting construction of the new southbound lanes on Mickleham Road.

We thank you for your continued patience while we deliver the remaining works on this important upgrade to Mickleham Road.

Dellamore Boulevard now open

Dellamore Boulevard reopened to traffic at Mickleham Road on 21 August, following major upgrade works.

During the works, we:

- removed the existing median and kerb and built new kerbs
- built the new shared walking and cycling path
- relocated and protected essential services, including water and drainage, and installed new traffic signal conduits
- removed the old road surface and laid asphalt for the new traffic lanes
- applied new road markings.

Hillview Road and Blossom Drive

From **Monday 23 September until late October**, we'll start additional works to upgrade the Hillview Road and Mickleham Road intersection. Access to Hillview Road will be maintained at all times.

We're also upgrading the intersection at Blossom Drive and Somerton Road to improve safety and traffic flow. To complete these works safely, we'll temporarily close Blossom Drive at Somerton Road from **23 September until late October**. We'll provide you with more information about these works before they happen.

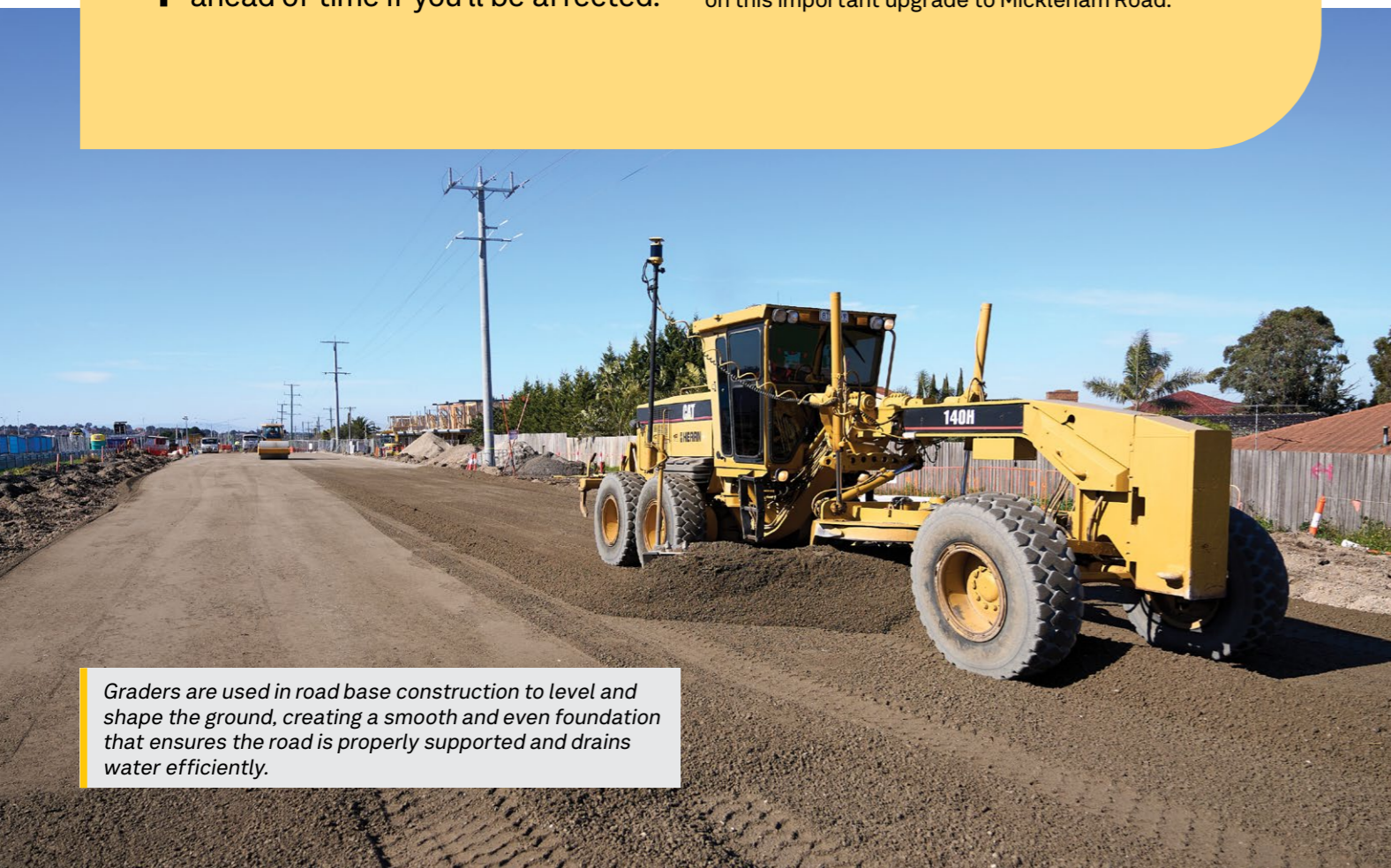


Students breathe life into Candy Road Basin

As part of our Greener Greenvale initiative, we teamed up with Aitken College to provide a boost for the local environment and students' educational experiences.

As part of the program, Year 9 and 10 Service Projects students recently planted 25 trees at Candy Road Basin. The students have been growing the trees in the school's greenhouse since last year, using seeds from native trees that needed to be removed to make way for new lanes on Mickleham Road, and giving new life to this flora.

When the tree-planting was complete, the students participated in a panel discussion about environmental and sustainability issues with their teachers and members of our project team.



Graders are used in road base construction to level and shape the ground, creating a smooth and even foundation that ensures the road is properly supported and drains water efficiently.



Works continue to merge the new and existing lanes on Somerton Road.



Aitken College students planting trees at Candy Road Basin.



What to expect

Traffic impacts

There are changed traffic conditions, including reduced speed limits, lane closures, temporary traffic barriers, traffic lights and line marking on Mickleham and Somerton roads while works take place. Temporary footpath closures and detours are also in place while we relocate services and build your new lanes.

Construction impacts

Our construction activities will generate medium to high levels of noise, dust, and vibration at times.

We're monitoring impacts to ensure they're kept to a minimum. We'll let you know ahead of time if you'll be directly impacted by our works.

Contact us

If you would like to speak to a member of our project team, please contact us on **1800 105 105** and select option 5. You can also send us a message at contact [@bigbuild.vic.gov.au](https://www.bigbuild.vic.gov.au).

Craigieburn Road Upgrade

For information about the nearby Craigieburn Road Upgrade, please visit [bigbuild.vic.gov.au/craigieburn](https://www.bigbuild.vic.gov.au/craigieburn) or subscribe for updates at [bigbuild.vic.gov.au/roads-subscribe](https://www.bigbuild.vic.gov.au/roads-subscribe).

Image top: Drainage is a crucial part of road construction. The drainage we've built will carry surface water runoff, preventing flooding, and protect the road structure.

[bigbuild.vic.gov.au/roads](https://www.bigbuild.vic.gov.au/roads)



For languages other than English please call 9209 0147

1800 105 105 (call anytime)

contact@bigbuild.vic.gov.au



Please contact us if you would like this information in an accessible format. If you need assistance due to a hearing or speech impairment, visit [relayservice.gov.au](https://www.relayservice.gov.au)