

Train travelling over the new underpass. View from Melba Avenue



Cave Hill Road, Lilydale, September 2024

Cave Hill Road underpass open by early October



The new underpass at Cave Hill Road will open by early October, providing locals with a safer connection across the rail line to Lilydale High School and nearby homes and businesses.

The fully accessible five-metre wide underpass can be accessed via stairs and a ramp and will link to future pedestrian and cycling paths in the area.

During our recent six-week winter construction blitz we:

- built the underpass foundations
- began construction of the stairs and ramp
- excavated more than 7,000 cubic metres of material from under the rail line
- installed the precast concrete box that serves as the frame for the underpass.

Landscaping and construction of the new turning circle outside Lilydale High School is now underway and when complete, will allow for safer vehicle movements near the school and local businesses.

Work is continuing on the new underpass until it opens by early October.

The Lilydale Line is the first rail line in Melbourne to be level crossing free – a year ahead of schedule – following the closure of the Cave Hill Road level crossing earlier this year and the recent removal of the final two level crossings at Coolstore Road, Croydon and Dublin Road, Ringwood East.

Why this level crossing needed to go



More than 100 trains passed through the level crossing every weekday



Removal of this level crossing improves safety and allows more trains, more often on the Lilydale Line



The removal of this level crossing helped make the Lilydale Line level crossing free in 2024, a year ahead of schedule



Sign up for updates
levelcrossings.vic.gov.au

**VICTORIA'S
BIG BUILD**

A safer, brighter underpass

The new underpass façade will feature vibrant colours and geometric patterns, highlighting the ramp and stairs.

The colours and patterns act as natural wayfinding, directing people through the underpass and providing a bright and striking entry and exit.

Landscaping around the underpass includes more than 90 trees, shrubs and plants, complementing the existing green and leafy environment. The planting design incorporates Australian native species and trees including red-flowering ironbark, blackwood, illawarra flame and fire wheel, increasing biodiversity in the area.



View of the new pedestrian underpass from Melba Avenue. Artist impression only, subject to change



Aerial view of the new pedestrian underpass from Taylor Street. Artist impression only, subject to change

Nest boxes for Lilydale locals

To support local fauna in Lilydale, we're installing nest boxes in a number of trees on the grounds at Lilydale High School.

The nest boxes mimic natural hollows often found in older trees, providing a cosy home for local wildlife and a safe environment to raise their offspring. Nest boxes serve as protection from predators and are installed well above ground level to keep their inhabitants safe.



Nest boxes installed as part of previous level crossing removal projects



Progress in pictures

May 2024



Building the foundations for the new underpass. View from Melba Avenue



Looking west along the rail line towards Croydon

June 2024

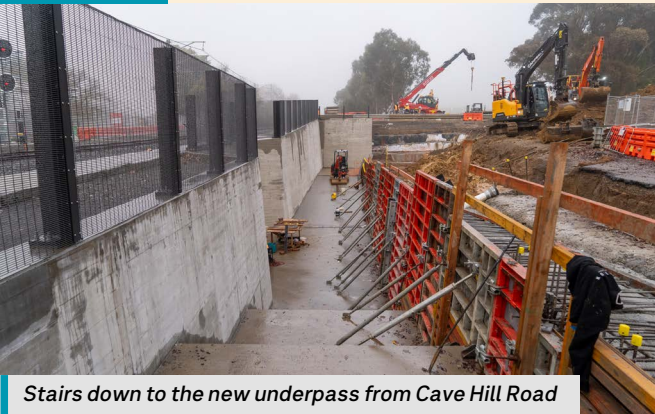


Building the foundations for the ramp down to the new underpass



New underpass taking shape. Looking towards Melba Avenue

July 2024



Stairs down to the new underpass from Cave Hill Road



New underpass taking shape. Looking towards Melba Avenue

August 2024



View of the new underpass. Looking towards Melba Avenue



Ramp and stairs down to the underpass from Cave Hill Road

How to get around

While works continue on the new underpass before it opens by early October, the pedestrian crossing at Cave Hill Road will remain closed. Pedestrians can cross the rail line at John Street to access Lilydale High School and Hutchinson Street/Melba Avenue.

Drivers

Access to Lilydale High School and businesses on Melba Avenue is from Hutchinson Street. Cave Hill Road and Taylor Street is accessible from John Street.

Pedestrians

See included map for pedestrian access via Cave Hill Road, John Street and Hutchinson Street.



Project timeline



* Timeline subject to change.

Stay up to date

Email updates

levelcrossings.vic.gov.au/subscribe and select Cave Hill Road

SMS alerts

Text **CAVE HILL** to **0438 942 094**

Questions

Call **1800 105 105** or email contact@levelcrossings.vic.gov.au

levelcrossings.vic.gov.au

contact@levelcrossings.vic.gov.au



For languages other than English, please call 9209 0147.

1800 105 105 (call anytime)

Please contact us if you would like this information in an accessible format. If you need assistance due to a hearing or speech impairment, visit relayservice.gov.au

