

Concept designs for the Boronia Station Upgrade from Dorset Road. Artist impression, subject to change.



Issue #01, November 2024

# Boronia Station Upgrade

## First look at concept designs

**We're upgrading Boronia Station and building a new landscaped plaza on Dorset Road to deliver a modern and accessible precinct for the community.**

Access between the station and Boronia's Dorset Road shopping precinct will be easier and safer, with a new landscaped plaza offering locals a direct connection to the upgraded station precinct.

The new plaza will feature landscaping, seating and lighting, helping to revitalise the area and create an inviting public space. A new pedestrian crossing with traffic lights will be installed on Dorset Road, making it easier and safer to walk between the shops and access the station.

A new forecourt and entrance canopies will enhance the look and feel of the station. Upgrading and relocating the station's ticket office and Protective Services office

to the station entries will allow the station concourse to be widened, improving local access over the rail line.

The project will also deliver accessibility upgrades at the station and improvements to Lupton Way. Safety in the area will be improved with increased station lighting and additional CCTV. There will be improvements to the platform including upgrades to station furniture, shelters, and toilets, as well as updates to the passenger waiting room.

The Boronia Station Upgrade is being delivered by the Level Crossing Removal Project with works set to start late next year and the project completed in 2026.

### Have your say

Whether you're a local, business owner or commuter, we want to hear from you. Have your say and complete our concept design and planning approvals surveys online. You can also view the project designs, ask us questions and let us know how you'd like to hear from us.

Scan the QR code or visit [engage.vic.gov.au/boronia-station-upgrade](https://engage.vic.gov.au/boronia-station-upgrade)



**Survey submissions and questions close 11.59pm, Sunday 15 December**

Delivered by the  
Level Crossing Removal Project

**VICTORIA'S BIG BUILD**

# Boronia Station Upgrade benefits

## The upgraded Boronia Station precinct and new landscaped plaza will provide a range of benefits.

- A new direct connection between the station, transport links and the Boronia shopping precinct.
- Relocated pedestrian traffic lights for safe and easy travel between key locations.
- A more appealing and refreshed station identity with new station entrance canopies, a widened concourse and platform improvements.
- More green space, with a mix of trees and shrubs in the new plaza that are weather-tolerant and low-maintenance to ensure their continued growth.
- Safety improvements with more CCTV, lighting and passive surveillance.
- A more accessible station precinct with footpath upgrades, improvements to wayfinding and new bike hoops.
- Improvements to the pocket park near Woolworths, creating more useable open and green space.

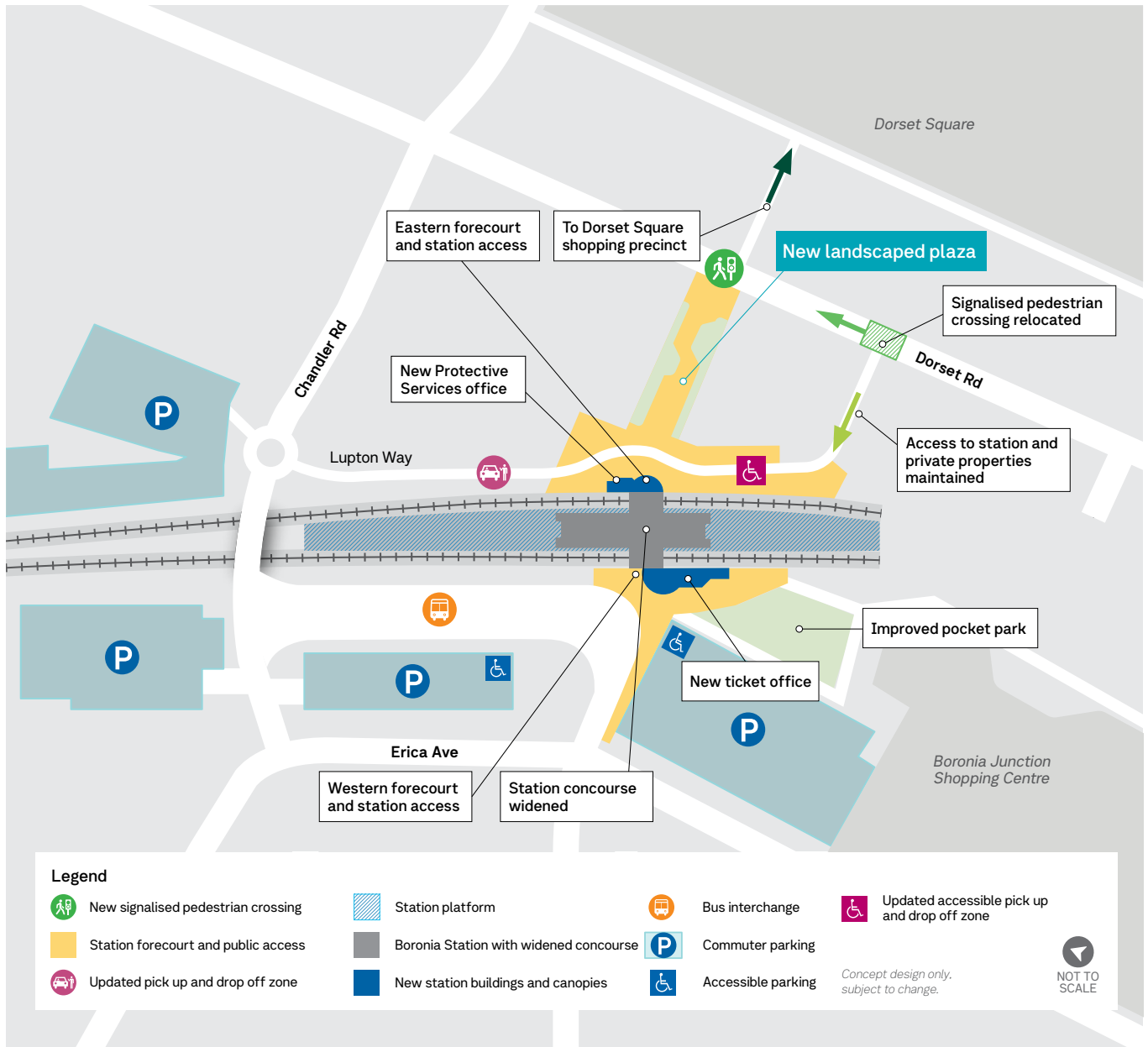


### Stay up to date

Learn more about the Boronia Station Upgrade at [levelcrossings.vic.gov.au/boronia-station](https://levelcrossings.vic.gov.au/boronia-station)

Sign up for email updates by visiting our website at [levelcrossings.vic.gov.au/subscribe](https://levelcrossings.vic.gov.au/subscribe)

The Boronia Station Upgrade will be complete in 2026, following works completed a year ahead of schedule to make the Belgrave Line level crossing free from Ferntree Gully to the city.





*Aerial view of the station precinct and new plaza connecting Boronia Station and Dorset Road. Artist impression, subject to change.*

## Revitalising the station precinct

### Upgrading the station precinct will create more inviting and appealing spaces for the community.

The concept designs honour Boronia, with urban and architectural design features inspired by its identity as a suburb at the foothills of the Dandenong Ranges.

Station buildings and landscaping designs reference the unique habitat of the Dandenong Ranges and aim to take inspiration from trees, ferns and fungi found there. Warm textured materials such as brick and ceramic tiles will complement this theme.

The perforated material of the entrance canopy will provide small flecks of light, simulating the experience of walking through the forest.

Widening the station concourse will highlight these features, opening towards the new plaza and making the precinct a welcoming space.

### Boosting Boronia

The Boronia Station Upgrade is part of the Victorian Government's plan to revitalise Boronia and promote local growth, liveability and connectivity. This upgrade will complement over \$5 million of projects and community grants funded and delivered in partnership with community groups and Knox City Council since 2021. Find out more at [suburbdevelopment.vic.gov.au/suburban-revitalisation/boronia](https://www.vic.gov.au/suburban-revitalisation/boronia)



*View of Lupton Way and new plaza from the widened station concourse. Artist impression, subject to change.*

# Get involved

## We're seeking community feedback on concept designs and planning approvals.

### Concept design survey

Have your say about specific elements of the concept designs, tell us how you use the area and how you'd like to hear from us.

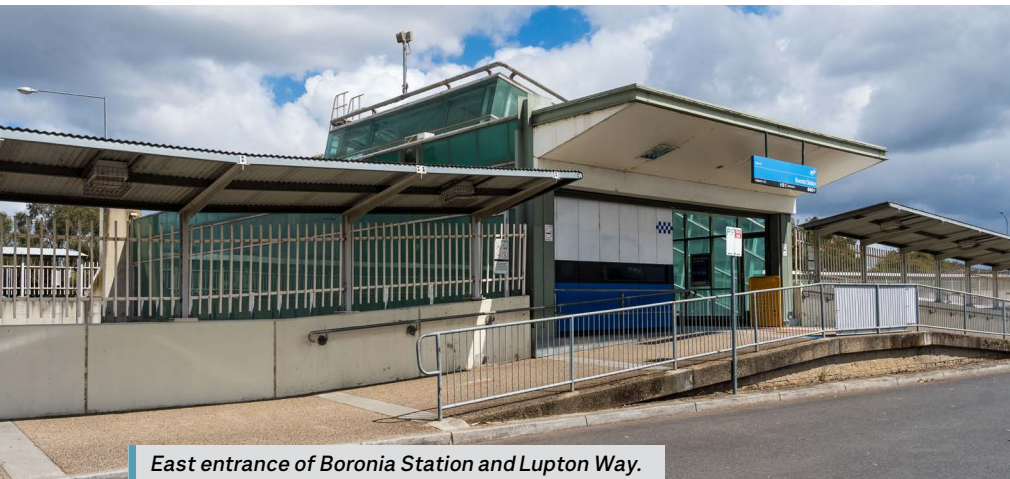
### Planning approvals survey

Planning approvals for this project will proceed under **Clause 52.03** – Level Crossing Removal Project of the Knox Planning Scheme. As the Boronia Station Upgrade is being delivered by the Level Crossing Removal Project, this planning provision applies to the project.

We are seeking community feedback on a range of planning matters, including project boundary, construction related impacts, environmental impacts, amenity impacts, native vegetation and heritage.

All feedback received will be included in a consultation report, which will inform the Minister for Planning's assessment of the project under **Clause 52.03**.

**The surveys can be completed on our online engagement hub and close 11.59pm, Sunday 15 December 2024. If you'd like a paper copy or need assistance completing the surveys, please contact us on the details below.**



East entrance of Boronia Station and Lupton Way.

## Project timeline



### 2023

- Project announced
- Site investigations



### 2024

- Site investigations continue
- Concept designs released



### 2025

- Final designs released
- Site investigations continue
- Works begin



### 2026

- Works continue
- Upgraded station open
- New plaza open
- Finishing and landscaping works

\* Timeline subject to change.



## Join us online or in person

We'll be out in the community in the coming weeks to talk about the designs. You'll find us at Boronia Station and local shops, or you can sign up to join us at a webinar on **Tuesday 26 November**. Find out more on our online engagement hub.

**Scan the QR code or head to [engage.vic.gov.au/boronia-station-upgrade](https://engage.vic.gov.au/boronia-station-upgrade) to visit the hub.**


Delivered by the Level Crossing Removal Project

[levelcrossings.vic.gov.au](https://levelcrossings.vic.gov.au)

[contact@levelcrossings.vic.gov.au](mailto:contact@levelcrossings.vic.gov.au)



For languages other than English, please call 9209 0147.

1800 105 105 (call anytime) 

Please contact us if you would like this information in an accessible format. If you need assistance due to a hearing or speech impairment, visit [relayservice.gov.au](https://relayservice.gov.au)

