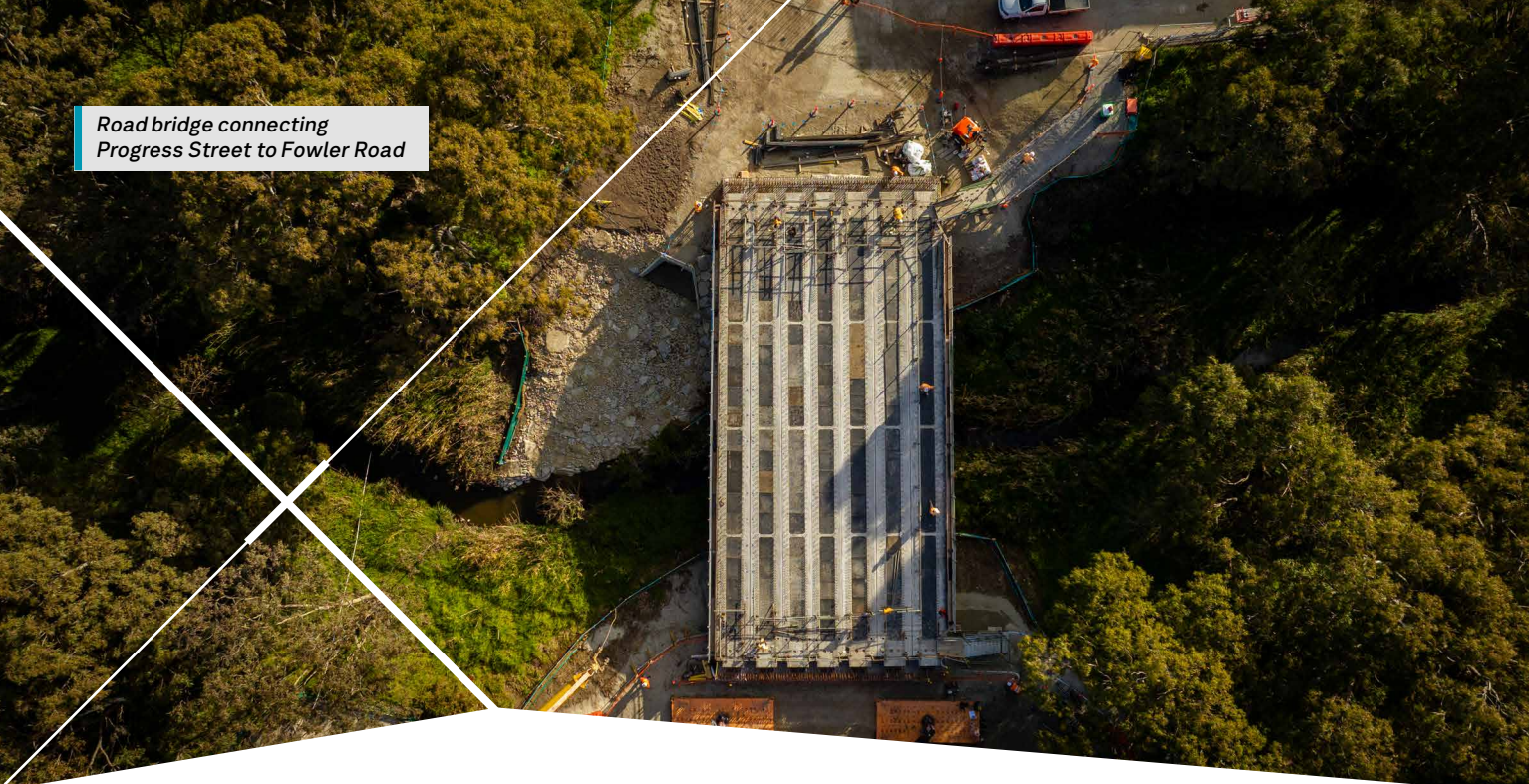


Road bridge connecting
Progress Street to Fowler Road



Progress Street, Dandenong South, December 2024

Level crossing removal community update



We're removing the level crossing at Progress Street, Dandenong South. This level crossing has been fast tracked for removal – one of 22 projects that will make the Pakenham Line level crossing free by 2025.

We're closing the level crossing and building a new bridge over Eumemmerring Creek connecting Progress Street to Fowler Road, with major construction now well underway.

The road bridge will provide businesses in this busy industrial precinct with safer access to South Gippsland Highway. The Fowler Road and South Gippsland Highway intersection will also be upgraded with new traffic lights to improve traffic flow and ease congestion in the area.

Making the Pakenham Line level crossing-free is critical in realising the benefits of the Metro Tunnel Project, which will be completed in 2025 and allow for an additional 121,000 peak hour passengers along the Pakenham and Cranbourne lines.

Removing all 8 level crossings in the City of Greater Dandenong will eliminate 5.6 hours of boom gate down time in the morning peak and make journeys safer for all road users.



Design Update

We're installing a new pedestrian footpath on the south side of Fowler Road, following completion of the project. This will be delivered by Greater Dandenong City Council.

Why this level crossing needs to go



Will allow **more trains** to run **more often**



Boom gates down for **21 per cent** of the morning peak



24 trains pass through the level crossing during the morning peak



Five near misses from 2012 to 2020



5200 vehicles pass through the level crossing each day



Sign up for updates
levelcrossings.vic.gov.au

**VICTORIA'S
BIG BUILD**

Upcoming works in 2025

In 2025, we will continue works to build the new road bridge and remove the level crossing at Progress Street. We will program works in four stages to minimise impacts to the local business precinct, where possible.

Informed by business engagement, the design has been updated to include:



Fowler Road upgrade with new indented parking, increasing the driveable width from 8m to 10m, making the road safer for all road users.



A new pedestrian footpath on the south side of Fowler Road, following completion of the project, to be constructed by Greater Dandenong City Council.



Street lighting upgrade on Fowler Road to achieve current standard lighting requirements, equivalent to Progress Street.



Speed limit reduction on Fowler Road and Progress Street from 60km/h to 50km/h.



Based on safety assessments, the Project provides a **better overall safety score**, and is considered a **safer outcome**, when compared to existing conditions within the precinct.

Stage 1: Fowler Road works

Works will take place on Fowler Road until **late 2025**. These will be split into two stages. Utility and drainage works will take place prior to the indented parking and driveway works.

From **early 2025**, temporary offset parking will be available for the business precinct at 13 Fowler Road.

A temporary pedestrian footpath will be available on the south side of Fowler Road during construction.



Stage 4: Fowler Road works continued

An alternative access route along Hallam Valley Road will be in place for the precinct from completion of Stage 3 (the upgrade of South Gippsland Highway).

This will minimise any traffic impacts during the Fowler Road indented parking works.

At completion of works, all road users will travel via the **Fowler Road bridge only**.



Stage 2: Progress Street closure

Progress Street will be closed from **April–June 2025** to raise the road to match the new bridge height. A detour will be in place via Hallam Valley Road.

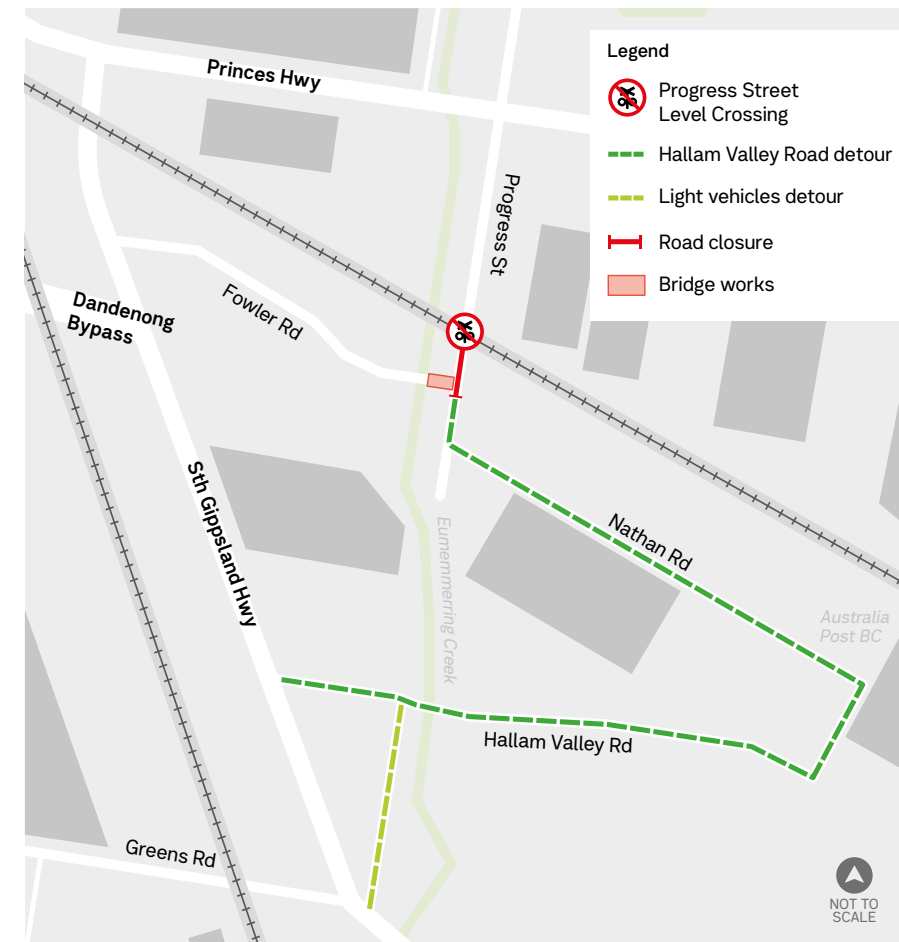
At the completion of these works the level crossing will be permanently closed and the Fowler Road Bridge open.

Hallam Valley Road detour

A temporary detour will be in place during the Progress Street closure and the South Gippsland Highway intersection works.

For vehicles using the detour route via Hallam Valley Road:

- a single lane bridge will be managed through traffic signals
- there will be a left hand turn only out of Hallam Valley Road
- traffic management will be in place.



Stage 3: South Gippsland Highway intersection works

South Gippsland Highway will be closed in both directions for approximately 2 weeks in the **July 2025** school holidays.

During this time, we will reconstruct and signalise the intersection with Fowler Road.

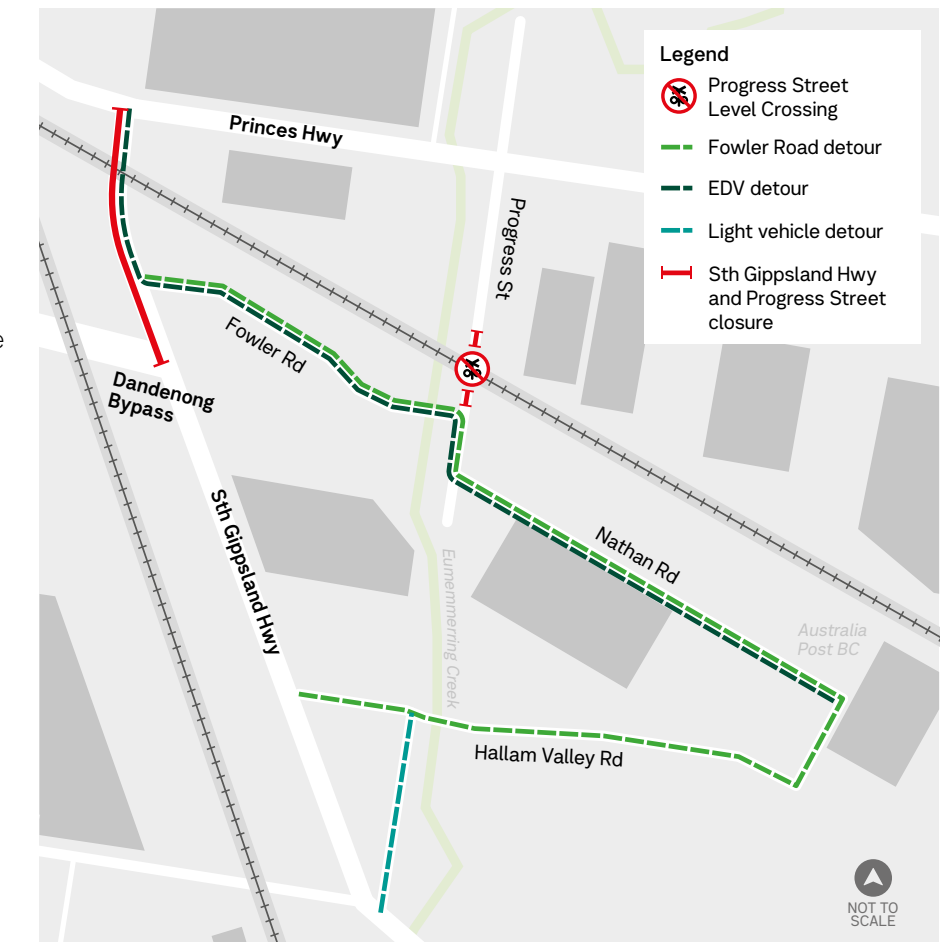
Detours will be in place via Princes Highway/South Gippsland Freeway.

The new road bridge will be open before works on the South Gippsland Highway intersection commence in July.

The Fowler Road precinct will use the temporary Hallam Valley Road detour during these works.

EDVs will travel along Fowler Road and along the path on South Gippsland Highway.

Drivers should expect delays due to works.

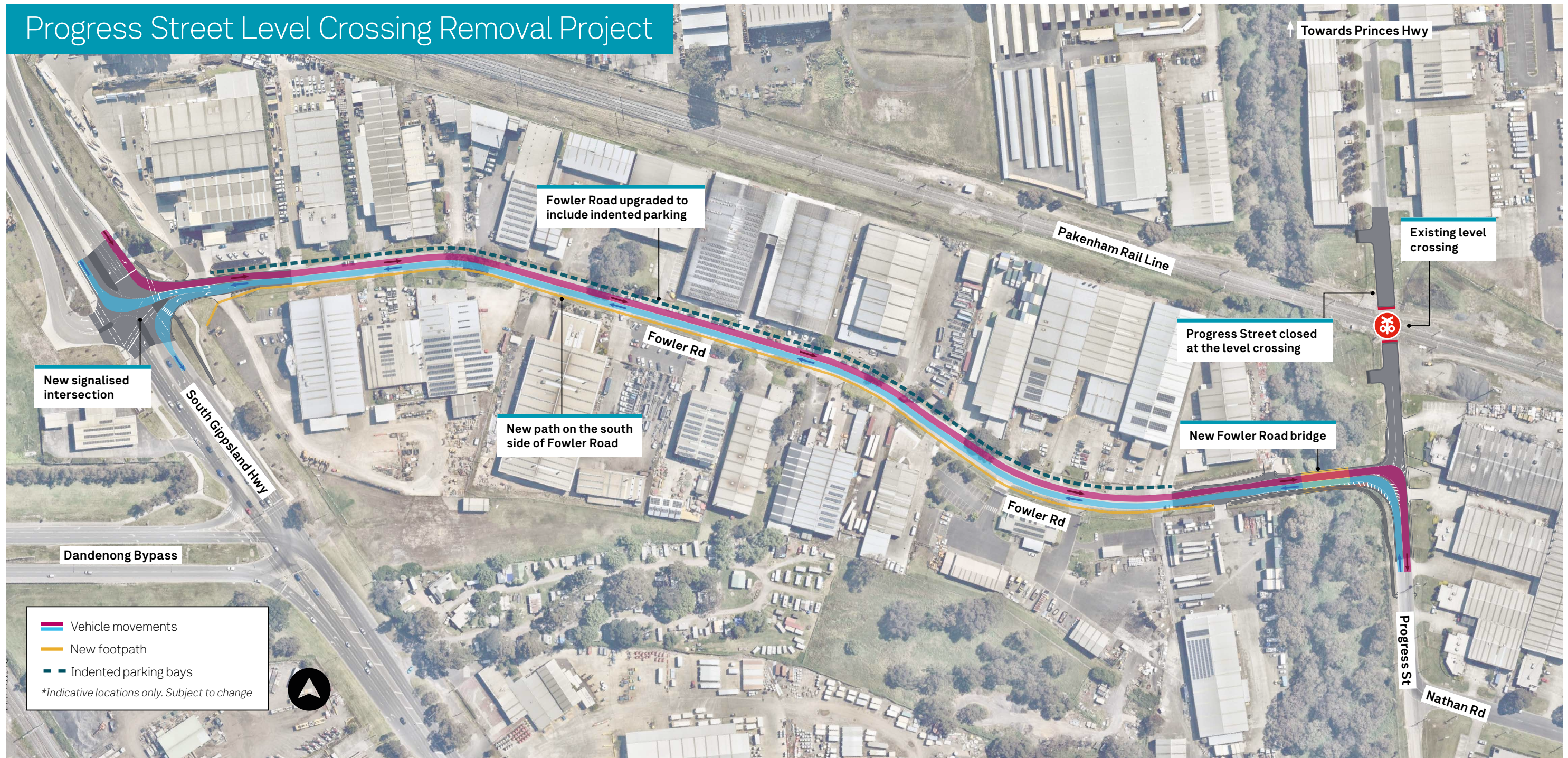


Scan the QR code to access the maps and more information online

Thank you for your patience during these works. We have a dedicated team to work with local businesses throughout construction to minimise impacts, where possible. If you have questions about the construction program, please contact our team **1800 105 105** or contact@levelcrossings.vic.gov.au



Progress Street Level Crossing Removal Project



Project timeline



* Timeline subject to change.



End of year shut down period

There will be no construction activity during the holiday period. Works will finish on **Friday 20 December 2024** and recommence on **Tuesday 14 January 2025**.



Stay informed

Sign up for email updates at levelcrossings.vic.gov.au/subscribe
 For SMS alerts, text 'PROGRESS' to 0447 558 118.
 For latest project news, visit facebook.com/levelcrossings

levelcrossings.vic.gov.au

contact@levelcrossings.vic.gov.au



For languages other than English, please call 9209 0147.

1800 105 105 (call anytime)

Please contact us if you would like this information in an accessible format. If you need assistance due to a hearing or speech impairment, visit relayservice.gov.au

