



# State Library Station and Town Hall Station Community Reference Group

Monday 10 February 2025

Presentation by Cross Yarra Partnership (CYP)



# Agenda

Monday 10 February 2025



Item	Topic	Presenter
1	Welcome and introductions	Chris Lovell
2	Minutes and actions	Chris Lovell
3	Project wide update	CYP
4	State Library Station update	CYP
6	Town Hall Station update	CYP
7	Creative program update	CYP
8	General feedback and items for future discussion	All
9	Meeting close	Chris Lovell



# Welcome and introductions

*Presenter: Chris Lovell*

# Minutes and actions

# Project wide update

# Project-wide update





# State Library Station update



2

Way out <





FOOTPATH  
CLOSED

More trains,  
more often

More trains,  
more often

La Trobe St

# State Library Station

La Trobe Street site



- All State Library Station escalators have been installed
- Fit-out and mechanical, electrical and plumbing works are continuing underground
- Fit-out and testing of the Melbourne Central escalators is ongoing
- Louvres are going in the west building and glazing with artwork is complete
- Utilities installation is ongoing within the eastbound lane closure at La Trobe Street.



# State Library Station

La Trobe Street site

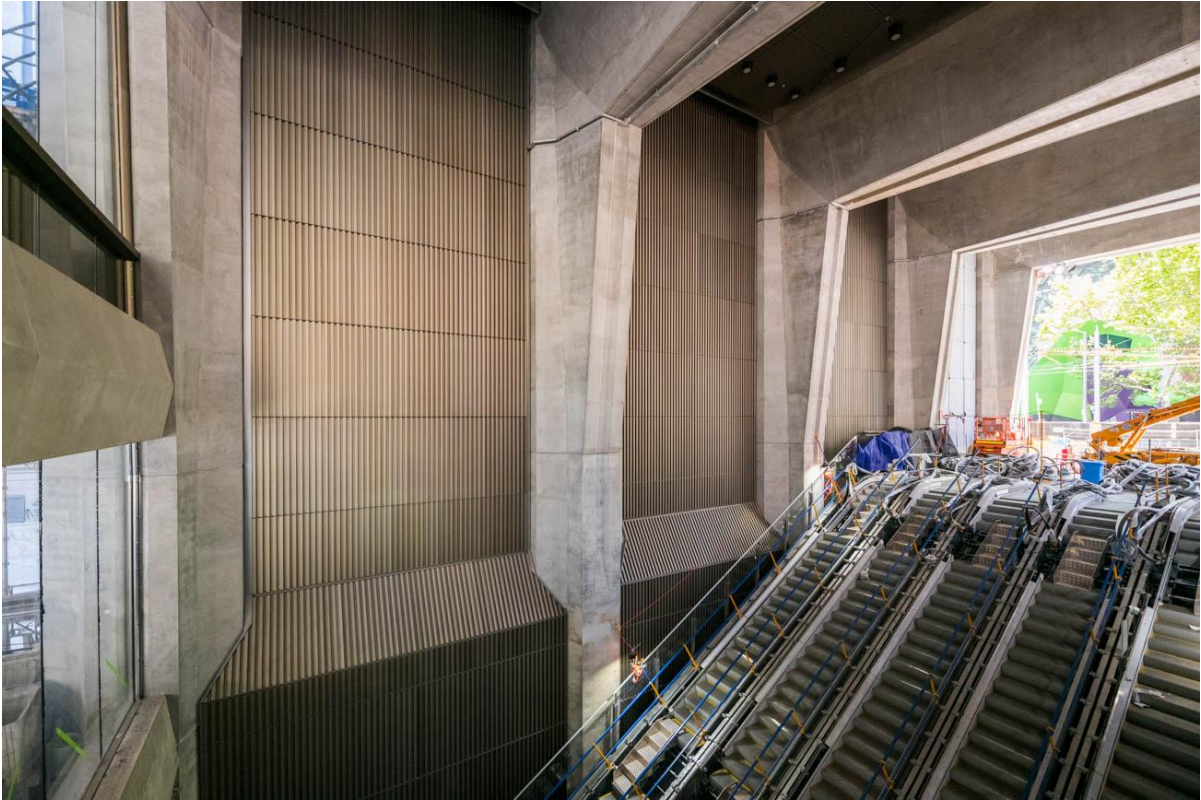


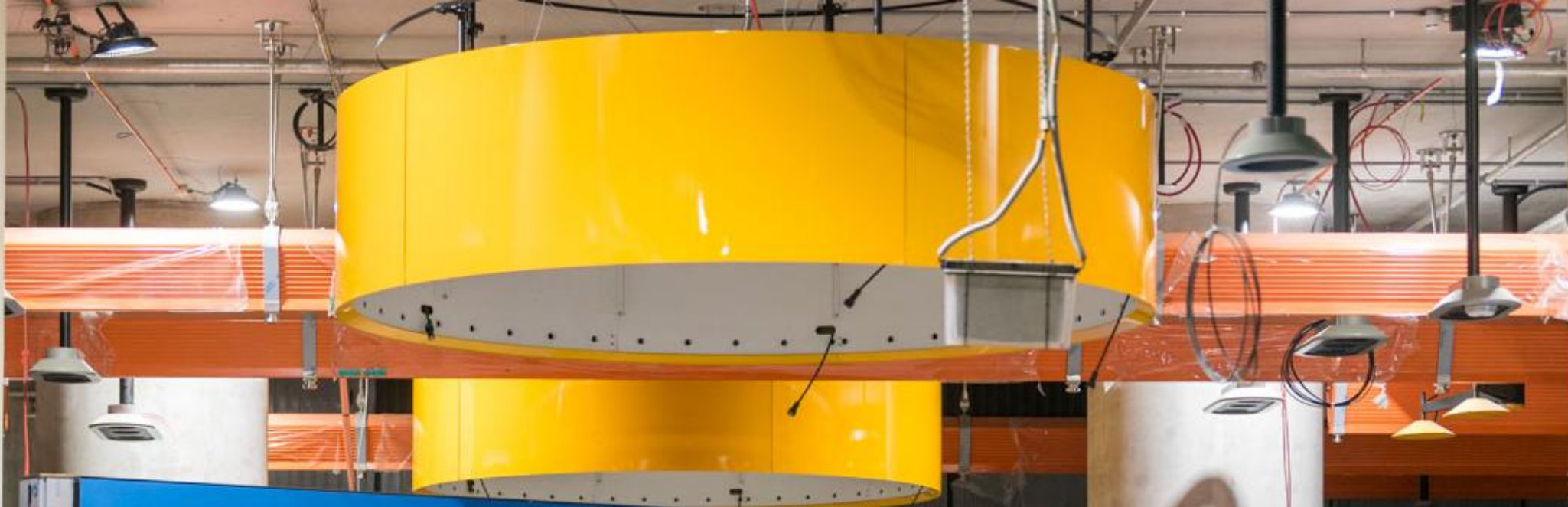
- Myki gates and signage have been installed
- Surface works at the station entrance including service installation, bollards and paving are ongoing
- A long-term pedestrian diversion on the western side of Swanston Street is in place to construct the station foyer and to carry out surface works outside of the station entrance
- To facilitate above ground structure works the Little La Trobe Street southern footpath is closed with a pedestrian diversion in place.



# State Library Station

La Trobe Street site



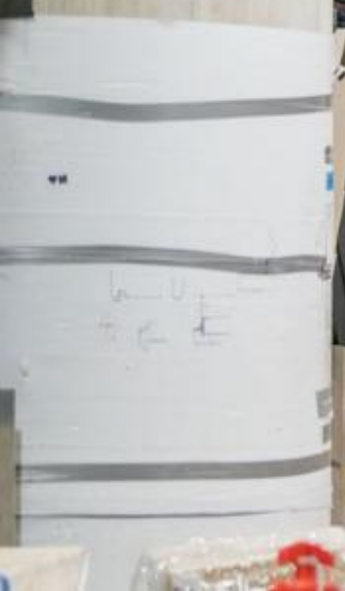



 STATE LIBRARY STATION

 Accessible ticket gate

←   Toilets


↑  Platforms



 Lift

↑ Way out to Swanston St, La Trobe St via Concourse

↑ Melbourne Central Station 70m

 Lift

↑ Way out to Swanston St, La Trobe St via Concourse

↑ Melbourne Central Station 70m



**DANGER**  
LIVE  
EQUIPMENT/TESTING  
IN AREA

EMERGENCY/COMMISSIONING  
AREA. NO ACCESS  
PERMIT REQUIRED TO ENTER  
CY CONTACT  
ESTEVAN, R 0479 118 269  
JOHNNY, A 0431 751 182

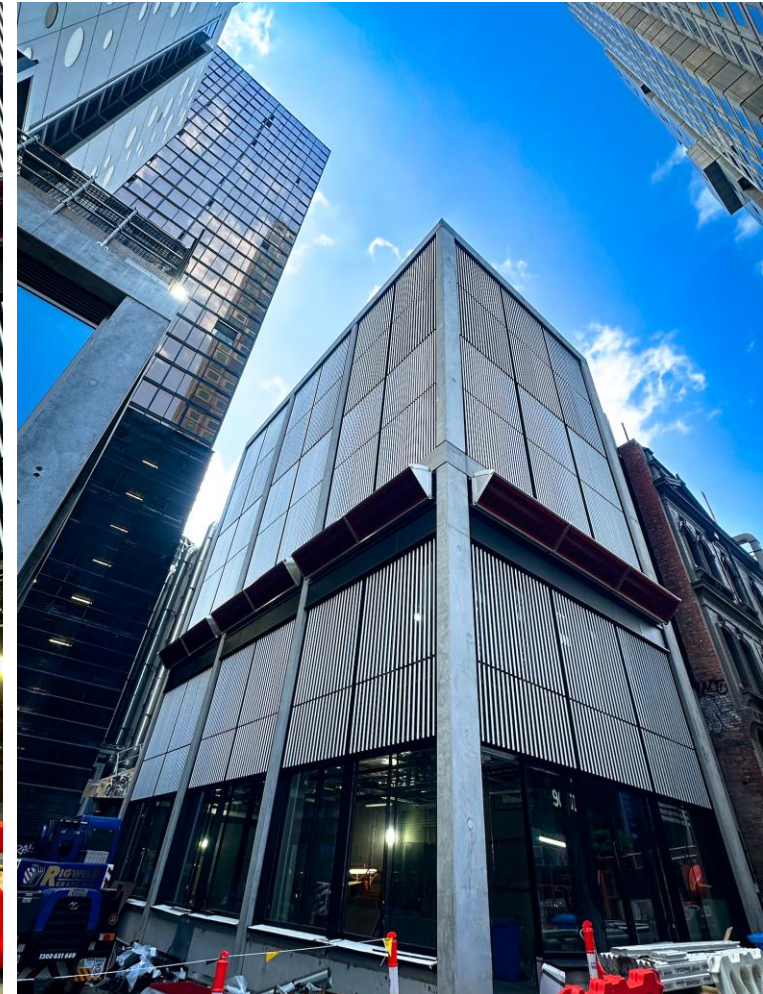
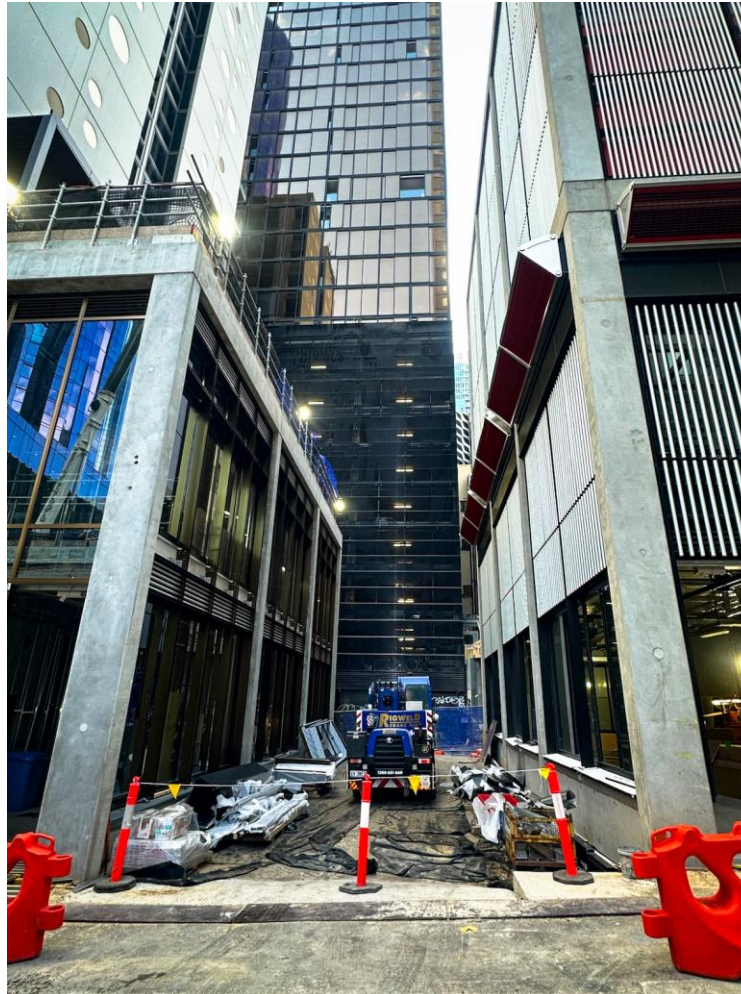
EMERGENCY/COMMISSIONING  
AREA. NO ACCESS  
PERMIT REQUIRED TO ENTER  
CY CONTACT  
ESTEVAN, R 0479 118 269  
JOHNNY, A 0431 751 182

# State Library Station

Little La Trobe Street



- Façade works, aluminum panels, louvers, and clear and opaque glass on the ground floor bays is nearing completion
- Commissioning of light and power for the above ground structures is now complete
- To facilitate ongoing works in this location, the Little La Trobe Street road closure will remain in place
- A pedestrian diversion is now in place on Little La Trobe Street to facilitate above ground structure works and the installation of the station's emergency staircase.



# State Library Station

A'Beckett Street site



- Excavation, capping beam and pile demolition at the western end of the shed are ongoing, making way for the above ground emergency stairwell structure to start
- Precast install on the over track exhaust, air ventilation and lift shafts of the both ground structures are now complete
- Waterproofing and backfill to surface level (4m) are commencing this month
- Cladding removal on the Swanston Street side of the shed will commence on night shift in preparation for shed removal in coming weeks
- Testing of electrical, mechanical and ventilation systems are underway.





# State Library Station

Franklin Street East site



- Canopy installation and fitout of the Franklin Street entrance is continuing
- Escalators have been installed
- Continuing with capping beam removal and backfill
- Waterproofing works are ongoing.



# State Library Station

Franklin Street West site



- All precast for the three ancillary buildings have been installed. Architectural cladding and roofing is continuing
- Capping beam removal around the site is ongoing
- Northern footpath works are nearing completion with bluestone paving now installed
- A southern footpath closure will be required for utilities and capping beam removal
- Stormwater connection works have commenced on Swanston Street near the site.

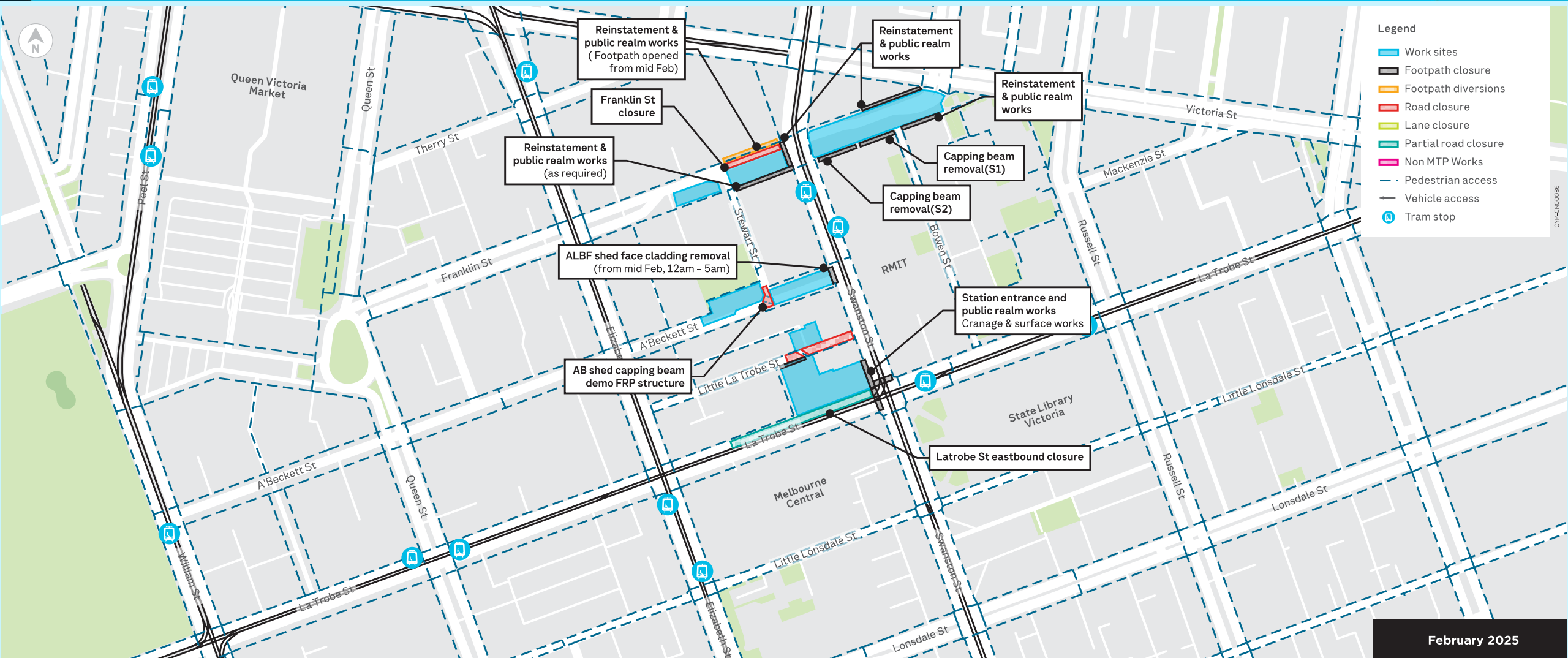


# February 2025

## Proposed Traffic Changes



Creative Program



February 2025

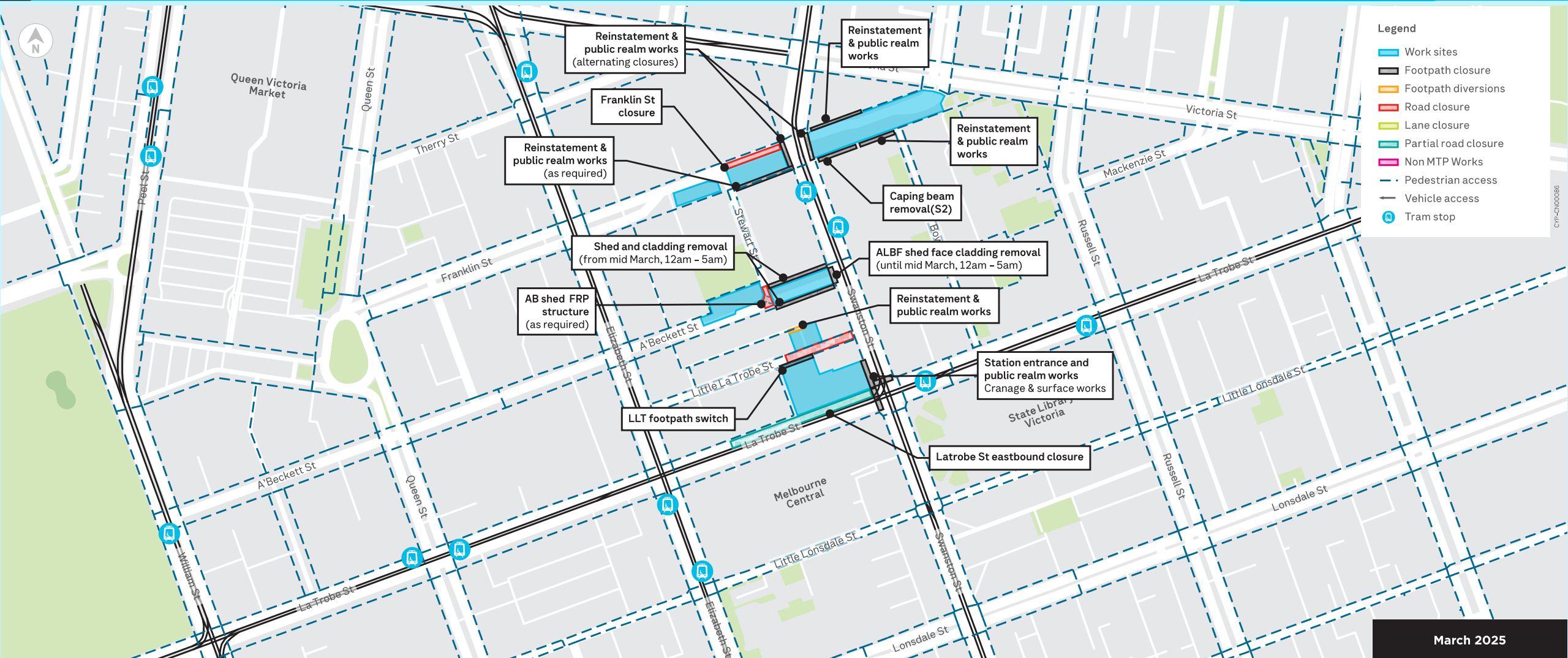
Metro Tunnel Project - State Library Station - External works look ahead

OFFICIAL: Sensitive

# March 2025 Proposed Traffic Changes



Creative Program



March 2025

Metro Tunnel Project - State Library Station - External works look ahead

OFFICIAL: Sensitive



# Questions

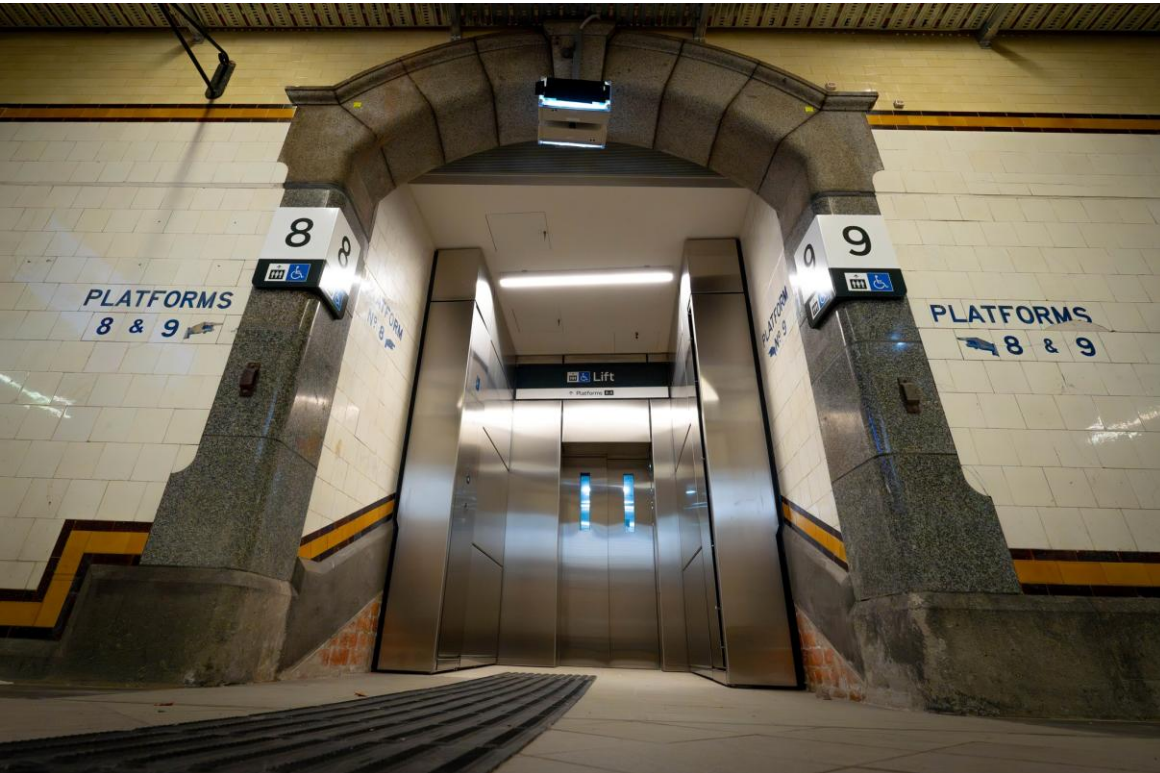


# Town Hall Station update

*Presenter: Blythe Chidgey*

# Town Hall Station

## Degraves Subway Reopening



# Town Hall Station

Campbell Arcade





# Town Hall Station

City Square – station entry canopy



# Town Hall Station

City Square- station entry canopy



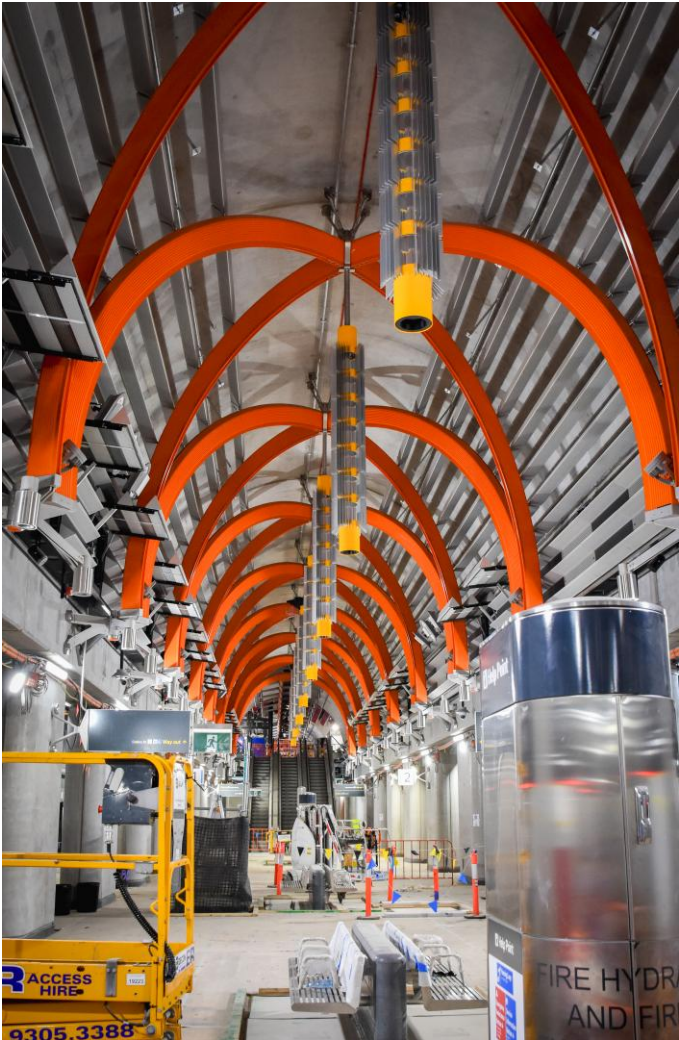
# Town Hall Station

Flinders Quarter above ground works



# Town Hall Station

Platform level



# Escalator Install



# Town Hall Station

Federation Square – Acoustic shed removal



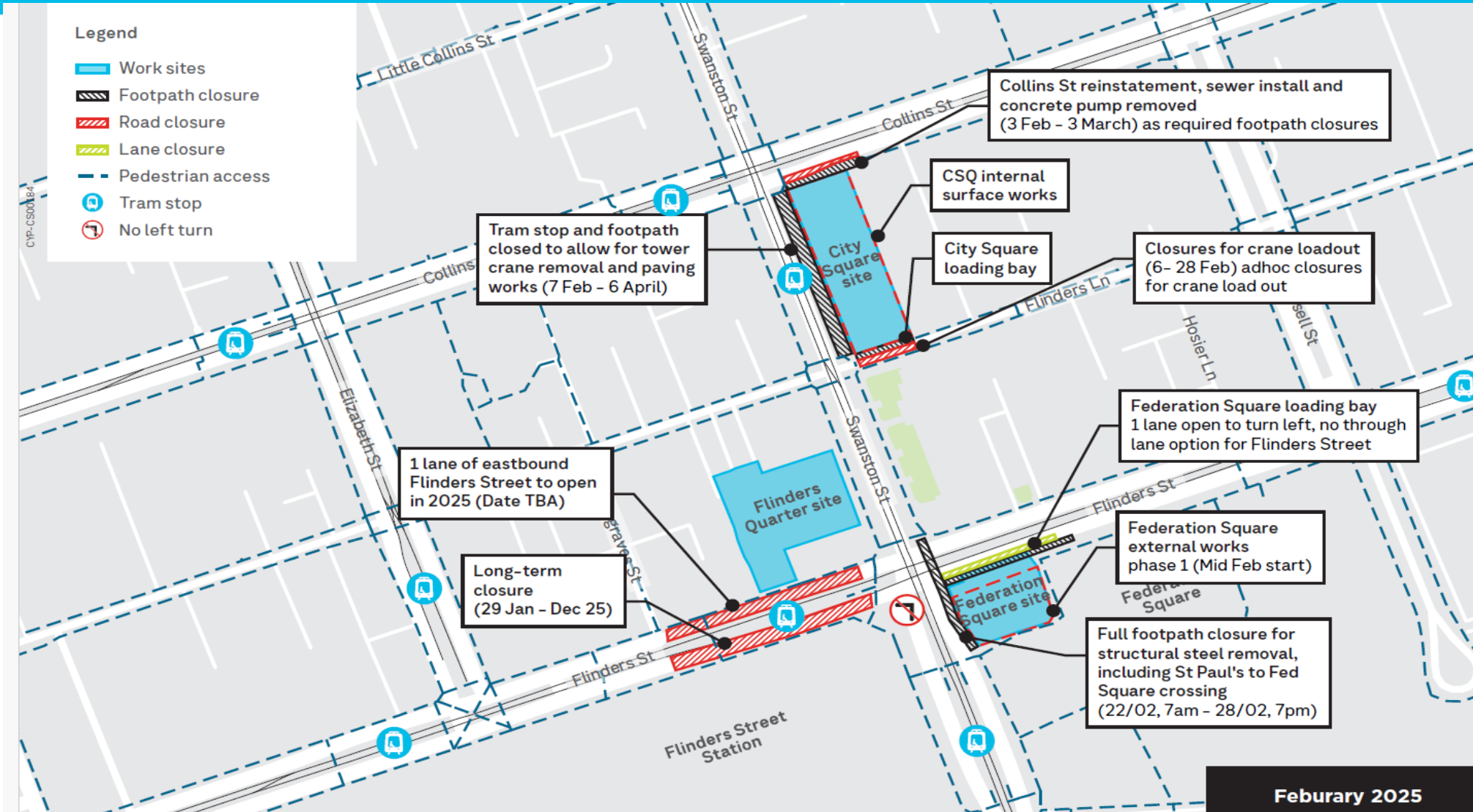
# Town Hall Station

Long-term lookahead



ACTIVITY	FEB	MAR	APRIL	MAY	JUN	JUL	AUG
City Square Tower Crane removal and Swanston St eastern footpath reinstatement	_____						
Collins Street southern footpath works	_____						
City Square above ground structures	_____						
City Square civil and landscaping	_____						
Fed Square site and acoustic shed removal	_____						
Fed Square above ground works (inside hoarding)	_____						

# Current traffic arrangement







# Questions



# Metro Tunnel Creative Program update

*Presenter: Teresa Scalise*

# Skull / Map series Scott Alley



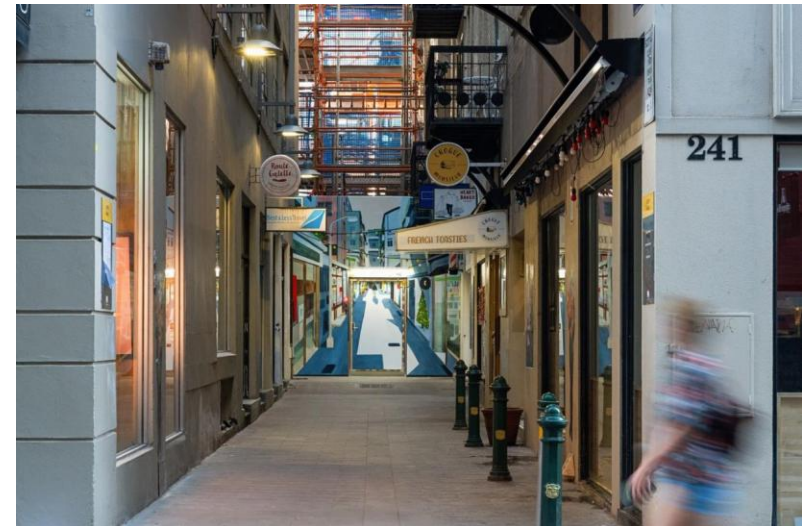
- Artwork by Paul Yore installed in partnership with Midsumma Festival- now removed
- Work was a 'tapestry' of pre-existing images shown publicly on previous occasions. They contain 'found texts' from the internet, television or newspapers
- Previous work, Marc Martin's '*Christmas Shopper*' will be displayed for a couple of weeks until new artwork is installed



# Christmas Shopper by Marc Martin Scott Alley



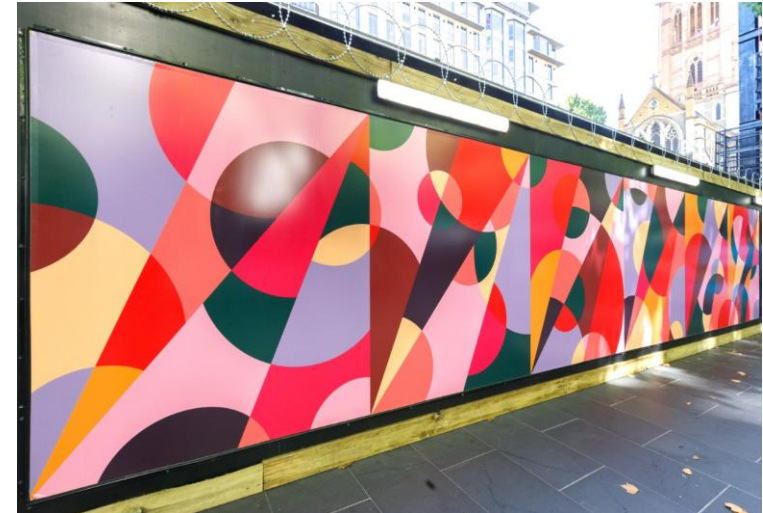
- On display at Scott Alley from December - January, replacing Vandal's artwork
- Extends Scott Alley towards an imaginary ongoing network of alleyways and shops



# City Square Spencer Harrison



- *Polyphonic* installed by Spencer Harrison in December
- Inspired by colour theories of Josef Albers, explores the interaction between bold, geometric forms and vibrant colours.
- Hoardings now removed



# City Square & Swanston Street Alice Oehr



- *Summer Feasting* by Alice Oehr installed in November/December
- Inspired by a tapestry of summer and festive foods to be enjoyed when the weather is warm
- City Square artwork removed



# Meagan Streader

## Two locations: Swanston Street and Flinders Street



- *Wall Whispers* by Meagan Streader installed in December
- Contains light reflecting vinyl that changes as you move past the artwork, reflecting the dynamic interplay of light and architecture
- Captures the essence of her immersive light installation 'Sky Whispers' shown at NGV



# Andrew Clapham La Trobe Street



Part of this artwork relocated from Arden Station to La Trobe Street, replacing Katy Smits' work

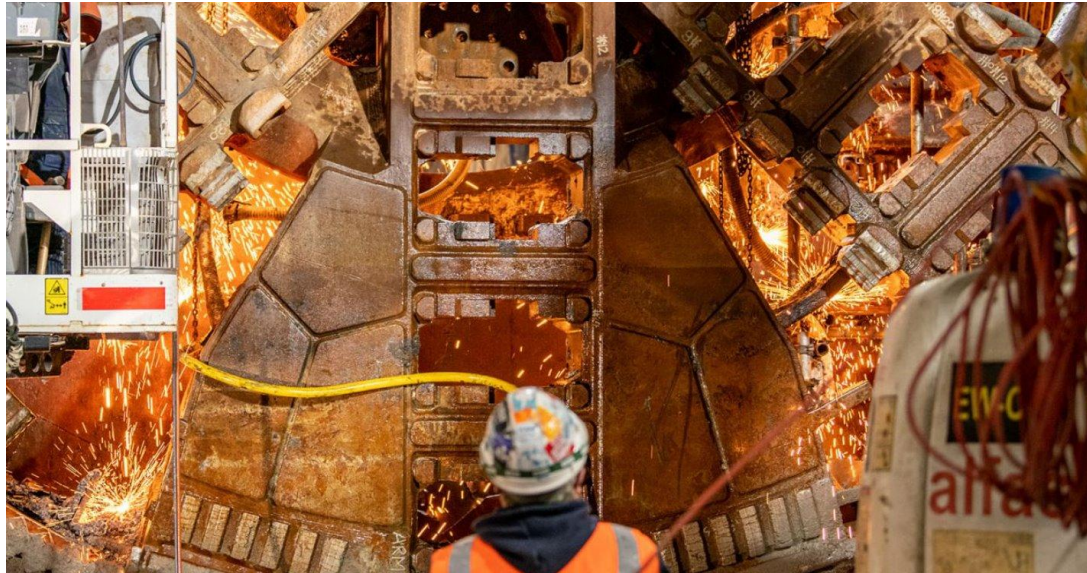




# Collins Street



Under Foot artwork images and project branding coreflutes was installed on Collins Street Friday 20 December



# Upcoming projects

# Reminder: Landscape and Remembering: In Conversation with Danie Mellor



- Artist talk event at State Library Victoria Theatrette on Wednesday 12 February, 6.30pm – 8pm
- In conversation with Myles Russell-Cook (Artistic Director and CEO of ACCA), Danie will discuss story behind *Forever*
- More than 170 tickets booked, [tickets available via eventbrite](#)





# Questions