

First stage of Melbourne Airport Rail gets underway

March 2025



Works will enable a future direct rail line to Melbourne Airport. Artist impression only, subject to change.

The first stage of Melbourne Airport Rail will soon kick off, with the Australian and Victorian governments investing in major changes to the rail network around Sunshine Station to enable a new rail line to the airport and support the growth of Melbourne's booming west.

More than \$4 billion is being invested in a major program of works spanning more than 6km from West Footscray to Albion, including a Sunshine Station Superhub. These works are the essential first step to connect Melbourne Airport to Victoria's regional and metropolitan rail networks. The works will also pave the way for more train services for the growing communities of Melton and Wyndham Vale.

The works include building new rail bridges, new and upgraded tracks, new signalling technology and realigned passenger and freight lines to untangle this complex section of the rail network.

Improvements to Sunshine Station, including two new platforms, will unlock capacity for more frequent services and enable better connections for regional and metropolitan passengers.

These upgrades will enable Sunshine Station to support more than 40 train services per hour, including six trains to the airport every hour.

Next steps

Works on the new Sunshine Station Superhub start in early 2026, with the job done by 2030.

Project features

- Sunshine Station Superhub is the first step to building the Melbourne Airport Rail
- Creating space for a future direct rail line from the airport to the CBD via the Metro Tunnel
- Creating capacity for 6 trains every hour to and from the airport
- Works spanning more than 6kms between West Footscray and Albion



Sign up to stay up to date

As the project progresses, we'll share more information via email updates, social media, website updates and hard copy mailouts.

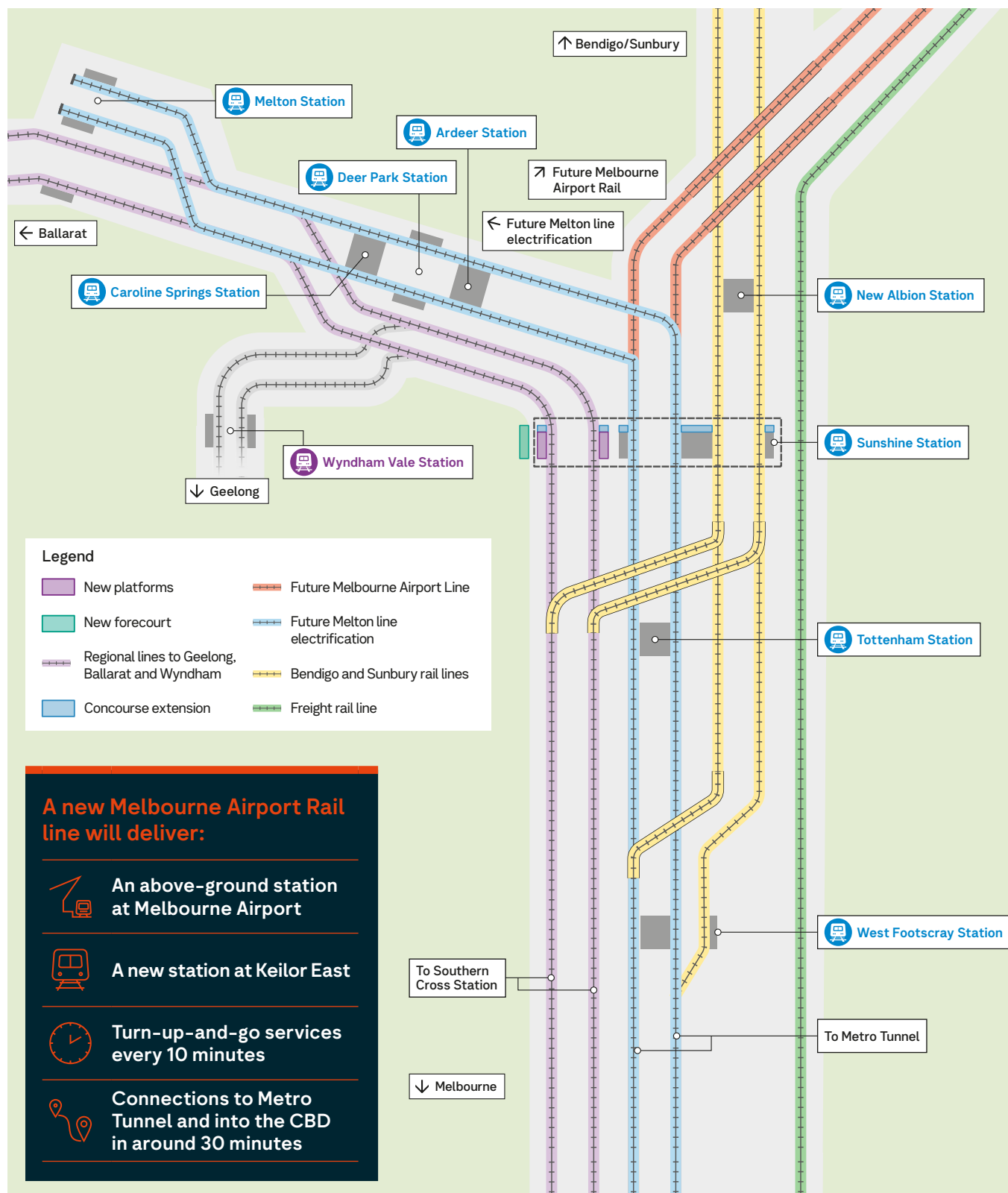
Subscribe for email updates by scanning the QR code or visit bigbuild.vic.gov.au/sunshine



Sign up for updates
bigbuild.vic.gov.au/sunshine

VICTORIA'S BIG BUILD

A new Sunshine Station Superhub to enable a future Melbourne Airport Rail line



bigbuild.vic.gov.au/sunshine
bigbuild.vic.gov.au/contact

1800 105 105 (call anytime)



For languages other than English
 please call (03) 9209 0147

Please contact us if you would like this information in an accessible format. If you need assistance due to a hearing or speech impairment, visit relayservice.gov.au

