



A new superhub for Sunshine Station

# Sunshine Superhub

Issue 02  
July 2025



## Planning for your new Sunshine Superhub

We're creating a new rail superhub in Sunshine to untangle Melbourne's most complex rail junction outside the CBD.

You can now provide feedback on the project as part of the planning approval process.

A \$4 billion joint investment by the Australian and Victorian governments will involve major works spanning more than six kilometres from West Footscray to Albion.

With concept designs set to be released later this year, we will add two new platforms at Sunshine Station to unlock extra capacity for a future rail line to the airport, and enable additional services for the growing communities of Melton and Wyndham Vale.

Delivering upgrades at Sunshine Station now will reduce future

disruptions for both Melbourne Airport Rail and a future electrification of the Melton Line.

When works are complete by 2030, more trains will be able to travel through Sunshine every hour, providing improved access to Melbourne's CBD through the new Metro Tunnel.

The new superhub will also make Sunshine Station the gateway to Melbourne's booming west and Victoria's regional areas, while enabling construction of an essential rail link to Melbourne Airport.

**Works on the new superhub at Sunshine will commence in early 2026.**

### Project features



Enables more trains to travel through Sunshine every hour



Works span more than 6kms from West Footscray to Albion



Creates space for future upgrades to the rail network



New platforms to unlock capacity for more services for the growing communities of Melton and Wyndham Vale, and to the airport



Better travel connections to the city and Victoria's regions



**Sign up for updates**  
[bigbuild.vic.gov.au/sunshine](https://bigbuild.vic.gov.au/sunshine)

**VICTORIA'S BIG BUILD**



Have  
your say

take  
our  
survey

Sunshine Superhub – planning underway

## Help shape the Sunshine Superhub

We are seeking your input on a range of planning matters.



Scan the QR code or visit  
[engage.vic.gov.au/project/  
sunshine-superhub](https://engage.vic.gov.au/project/sunshine-superhub) by 11.59pm,  
Sunday 27 July 2025.

If you would like a hard copy survey sent  
to you, please call us on **1800 105 105**  
or email [contact@bigbuild.vic.gov.au](mailto:contact@bigbuild.vic.gov.au)



**Tham gia bằng ngôn ngữ  
của bạn**

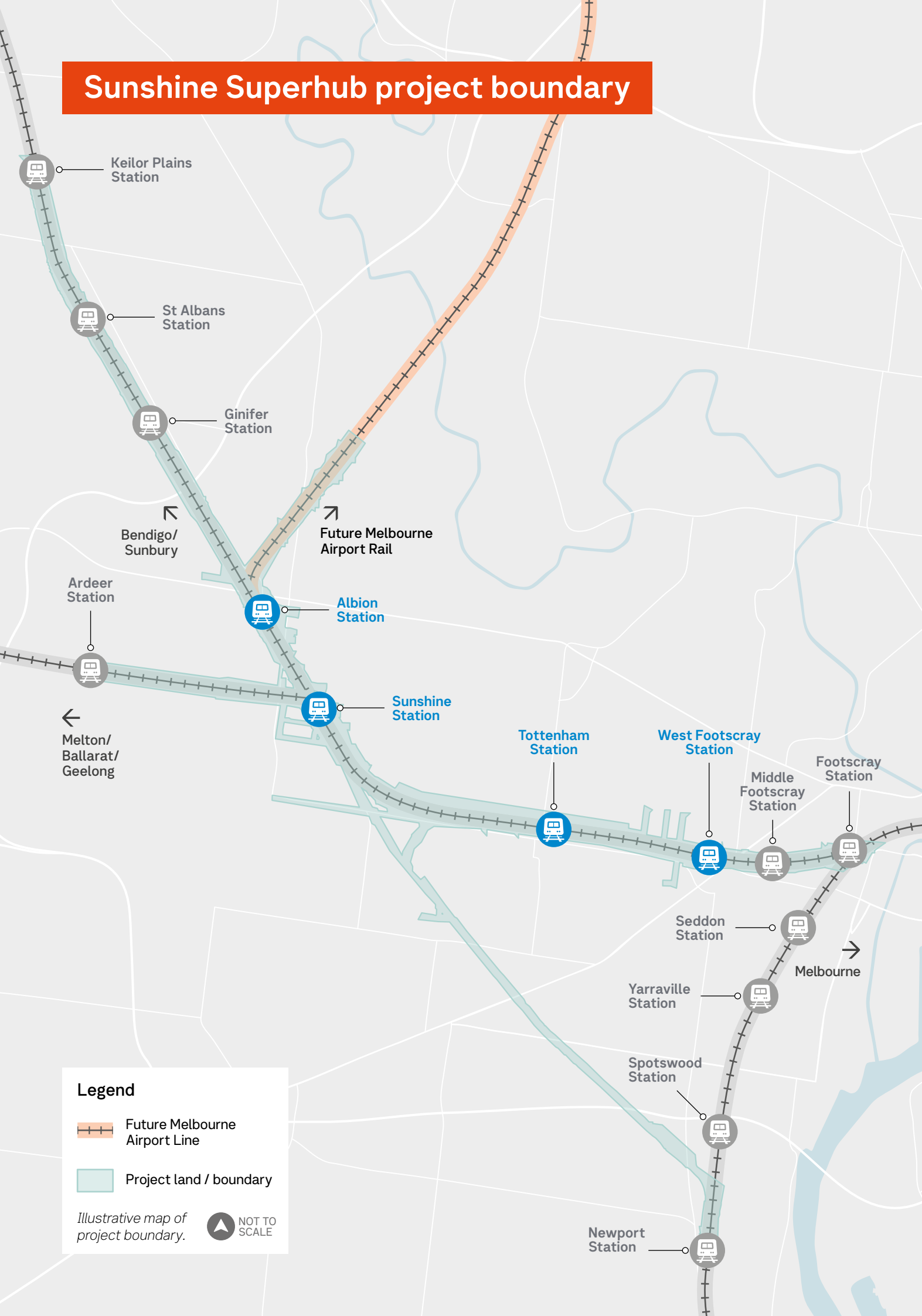
Truy cập [engage.vic.gov.au/project/  
sunshine-superhub](https://engage.vic.gov.au/project/sunshine-superhub) trước 11 giờ 59  
phút đêm Chủ Nhật ngày 27 tháng  
7 năm 2025.



**用你的語言參與**

請在 2025 年 7 月 27 日（星期日）晚上  
11 點 59 分前訪問 [engage.vic.gov.au/  
project/sunshine-superhub](https://engage.vic.gov.au/project/sunshine-superhub)

# Sunshine Superhub project boundary





## Planning approvals

Planning approvals for the Sunshine Superhub project will proceed under Clause 52.03 of the Victorian Planning Provisions for the relevant planning schemes.

We're seeking community input on a range of planning matters, including:

- project boundary
- environmental management
- heritage impacts
- tree and vegetation removal
- amenity
- traffic and access
- construction-related impacts.

Feedback will be included in a consultation report, which will inform the Minister for Planning's assessment of the project.

**Consultation is open from Monday 30 June to Sunday 27 July 2025.**

To make a submission visit [engage.vic.gov.au/project/sunshine-superhub](https://engage.vic.gov.au/project/sunshine-superhub)

Submissions close at **11.59pm, Sunday 27 July 2025.**

If you would like a hard copy form, please call us on **1800 105 105** or email [contact@bigbuild.vic.gov.au](mailto:contact@bigbuild.vic.gov.au)



### Next steps

There will be further opportunities to have your say as the project progresses.

Later this year, you'll have the chance to provide feedback when we share concept designs for the new platforms and concourse at Sunshine Station.

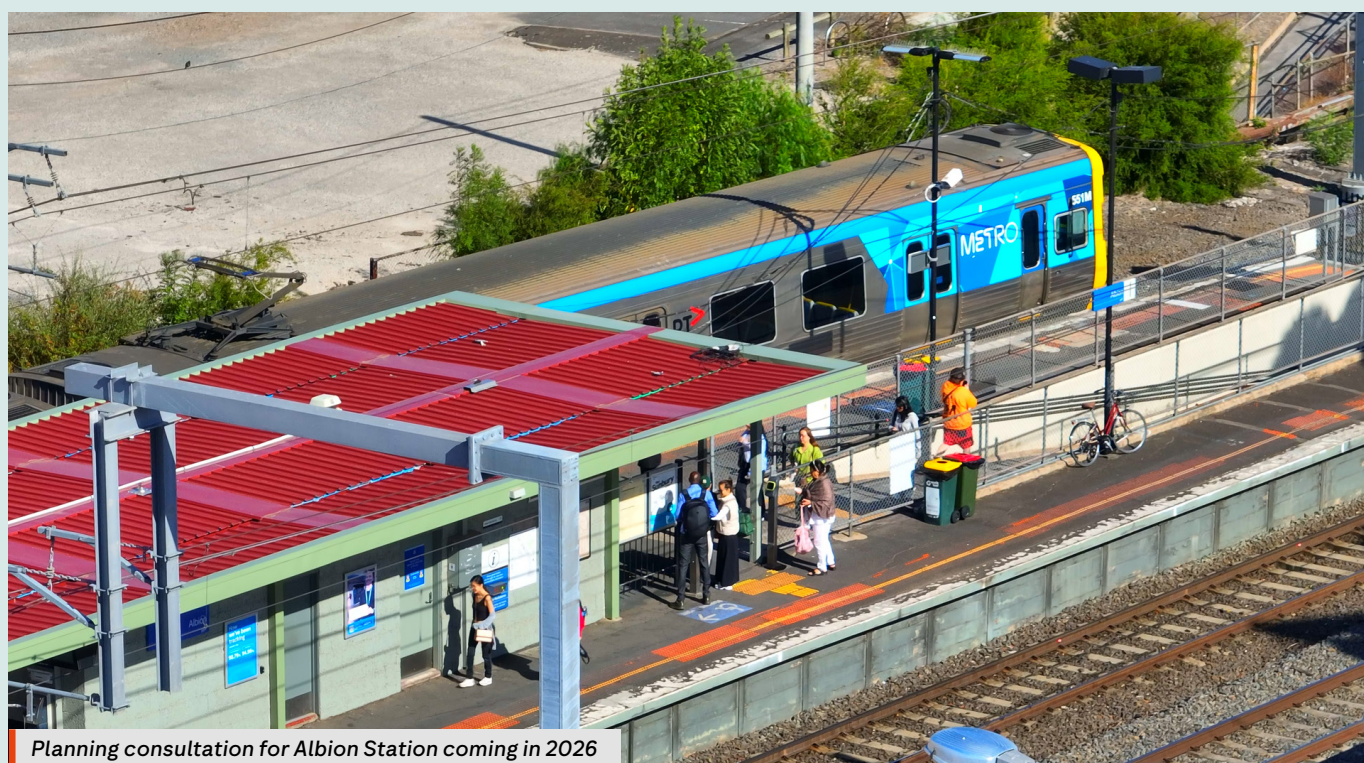
## Albion Station

We are building a new, modern and safer Albion Station.

The new station will deliver upgraded passenger facilities and improved connections to more services and the Metro Tunnel.

The new station will also enable easier access to a future airport rail line, just one stop away from the Sunshine Superhub.

Detailed planning and design work is now underway, and we will release concept designs and commence separate planning consultation for Albion Station in 2026.



Planning consultation for Albion Station coming in 2026



# Sunshine Superhub project area

Albion Station

- New modern and accessible station
- A separate planning consultation for Albion Station will take place in 2026.

Sunshine Station

Works underneath Hampshire Road bridge to allow new rail tracks to pass

Two new platforms for regional services

Improvements to station car park and passenger access to the station

Concourse extension to accommodate two new platforms

NOT TO SCALE

Legend

Two new tracks added

NOT TO SCALE

Concept only. Subject to change.

Tottenham Station

- Works within the rail corridor to upgrade signalling, install new tracks and accommodate new rail bridges
- Modifications to rail yard sidings
- New rail bridge to allow for two new tracks over Ashley Street.

West Footscray Station

- New signalling in rail corridor.





## What we have been up to since February 2025:



Doorknocked  
**600 homes**

Delivered our first community update to  
**31,000**  
residents and businesses in  
and around Sunshine Station



Conducted  
**station pop ups**  
at Sunshine and Albion stations

Commenced  
**site investigations**  
in the rail corridor from  
West Footscray to Sunshine



Continued with planning and  
technical assessments as we  
prepare for construction to  
**begin in 2026**

## Project timeline



**2025**

- Project announced
- Site investigations
- Planning consultation
- Concept designs for Sunshine Superhub released



**2026**

- Major works begin
- Concept designs for new Albion Station released
- Planning consultation for Albion Station



**2030**

- Sunshine Superhub complete



## Sign up to stay up to date

Sign up to email updates at  
[bigbuild.vic.gov.au/sunshine](https://bigbuild.vic.gov.au/sunshine)

Call us on 1800 105 105

[bigbuild.vic.gov.au/sunshine](https://bigbuild.vic.gov.au/sunshine)  
[bigbuild.vic.gov.au/contact](https://bigbuild.vic.gov.au/contact)

1800 105 105 (call anytime)



For languages other than English  
please call (03) 9209 0147

Please contact us if you would like this information in an accessible format. If you need assistance due to a hearing or speech impairment, visit [relayservice.gov.au](https://relayservice.gov.au)

