

View of the station entry, looking to the northwest. Mature trees and plants shown. Artist impression only, subject to change.



West Tarneit Station / Issue #02, September 2025

West Tarneit Station

Final designs released as major works begin

We're building West Tarneit Station to better connect the growing suburbs of the west to Melbourne's CBD.

The new station will be located on the V/Line Geelong Line between Tarneit and Wyndham Vale stations, near the corner of Leakes and Davis roads.

West Tarneit Station will include a four-bay bus interchange, parking for 400 commuters, and an accessible pedestrian underpass.

The station will also feature a welcoming and well-lit precinct, with landscaping, seating, separated walking and cycling paths, bike hoops and secure bike storage.

The design ensures the area can accommodate future rail improvements and planned urban development on both sides of the rail line.

Final designs for the station are now available to view on our online engagement hub.

Major construction is underway, and the new station will open to the community in 2026.

View the final designs and register for an information session

Learn about how we've updated the project designs after reviewing the community feedback and conducting further technical assessments.

You can also ask a question about the new West Tarneit Station and find out more about upcoming community information sessions at our online engagement hub.

Our online engagement hub will be open for questions until **11.59pm Sunday 28 September 2025**.



Scan the QR code or head to **engage.vic.gov.au/west-tarneit-station**



View of pedestrian underpass, looking to the northeast. Mature trees and plants shown. Artist impression only, subject to change.

Project benefits

The design and features of the new West Tarneit Station will provide a range of benefits:



Accessible, modern and welcoming station precinct



Separated walking and cycling pathways through the precinct, designed to connect to existing and future local pathways



Better **public transport** access for Melbourne's growing west



Well-lit, accessible pedestrian underpass with ramps to the platforms



Centralised bus services with a new bus interchange



A secure, 26-space **parkiteer** and **30 bike hoops**



Celebration of local flora and fauna throughout the **landscaped station precinct**



Designed to accommodate **future improvements** including additional tracks, increased public transport services and parking north of the station

How you helped shape the final designs

In late 2024, we asked for your feedback on what you value about the local area, how you move around the neighbourhood and aspects of the concept designs.

We heard that the community values natural landscapes, such as the local native grass and wetlands, and Davis Creek. We also heard that connectivity to local shops, housing estates and community groups is important, as well as understanding and celebrating the area's diversity.

The feedback received, along with detailed technical assessments and further design development, has helped inform the final designs for the new station.

Thank you to all who submitted feedback and attended an information session.



Read our full Community Engagement Report

Scan the QR code or head to bigbuild.vic.gov.au/west-tarneit-station-publications

Features you want at West Tarneit Station

Stair and ramp access

Easy access was the number one feature the community said they like about other stations across the network. This will be achieved by an accessible, well-lit underpass as well as ramps and stairs to both platforms.

Landscaping in the station precinct

Approximately 90% of community members who completed our survey said that introducing landscaping in the precinct was important to them. Most respondents would like to see a mix of trees, flowering plants, low and ground level plants and grasses in the landscaping with an emphasis on trees.

Colour in the design

The landscaping will include more than 17,000 native trees, plants, shrubs and grasses. The precinct will feature hardy, colourful flowering species such as wattles, correas, goodenias, flowering gum trees and bottlebrushes.

Bike storage

More than a third of commuters told us they plan to cycle to the new station; and we are providing 30 bike hoops and a secure parkiteer with 26 places for bikes.

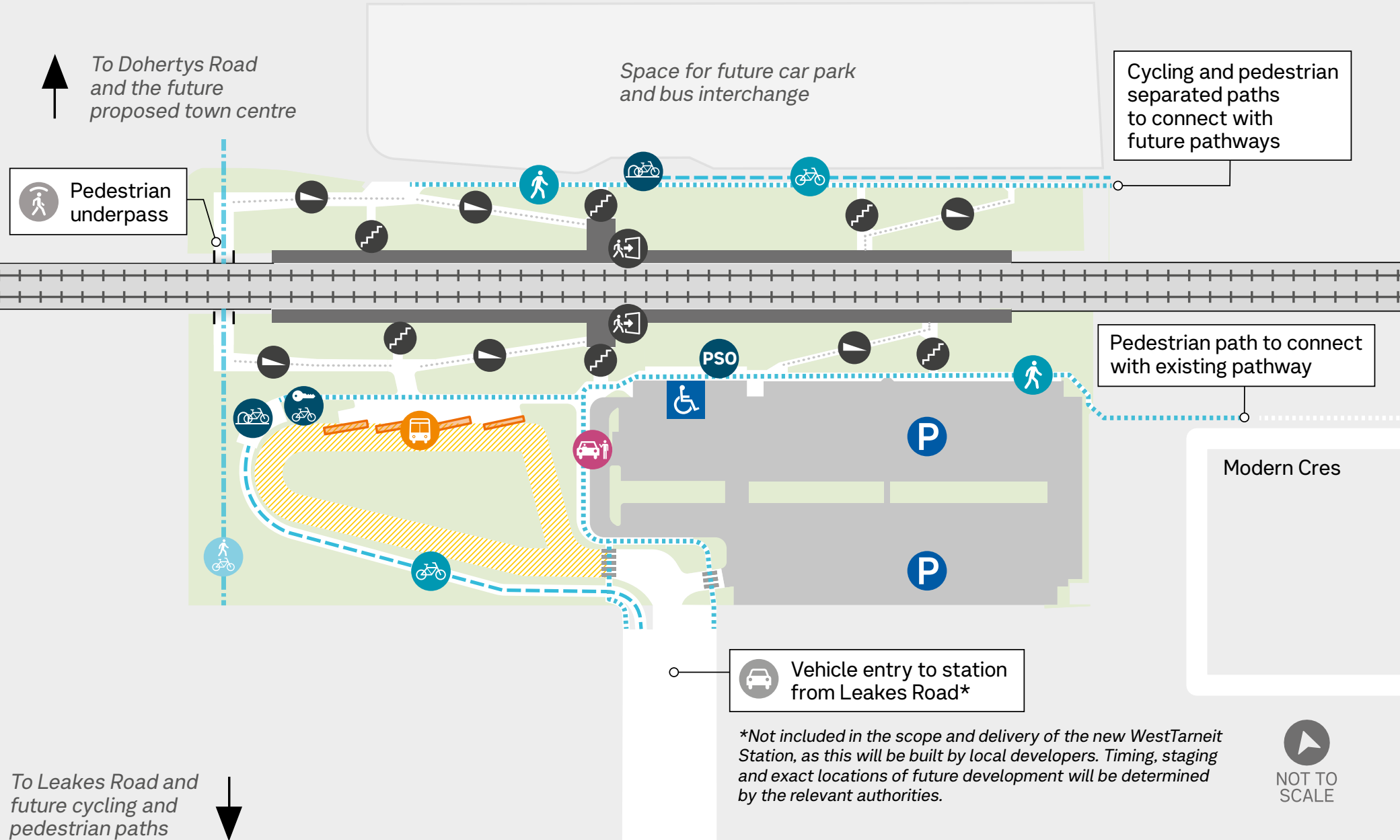
We have moved the parkiteer closer to the main station entrance to support the community's desire to travel sustainably.

One of the community's top design preferences was to see some vibrant colour incorporated into the designs.

The pedestrian underpass will be tiled in a range of bright green tones. The project designs have taken their cues from this colourful feature and incorporated several shades of green on other features throughout the precinct.

West Tarneit Station

- Legend**
 - Station platform
 - Landscaped area
 - Ramp
 - Pedestrian paths
 - Cycling paths
 - Future pedestrian and cycling connections*
 - Main station entrance
 - Stairs to platform
 - Commuter car park
 - Accessible parking
 - Bus interchange
 - Bus bays and shelters
 - Pick up/drop off zone
 - Parkiteer (locked bike storage)
 - Bike hoops
 - Protective Services Officer (PSO)
 - Zebra crossing



*Not included in the scope and delivery of the new WestTarneit Station, as this will be built by local developers. Timing, staging and exact locations of future development will be determined by the relevant authorities.





Future pedestrian and cycling connections

Vehicle entry to station from Leakes Road.

Aerial view of the station precinct. Mature trees and plants shown. Artist impression only, subject to change.

Travelling to the station

The new West Tarneit Station will be a critical public transport link in a fast-growing area of Melbourne.



Public transport connections

Our designs ensure easy access between the new bus interchange and the station platforms.



Pedestrian and cycling connections

We're building pedestrian and cycling access from both north and south of the rail line and keeping these paths separated to enhance community safety.

More than 80% of respondents to our community survey said they intend to walk, cycle or ride their e-scooter or e-bike to the station at various times, mixed with car use.

The pedestrian and cycling connections throughout the precinct and the local area will help the community access the station while providing health, wellbeing and environmental benefits.



Pick-up/drop-off and accessible parking

The new station design includes five car spaces in the pick-up/drop-off zone located at the closest point to the southern entrance. The design also includes ten accessible car spaces, located at the closest point to the underpass path for northern platform access and the ramp for southern platform access.



Access into the station

Vehicle, pedestrian, and cyclist access to the station precinct will be via a new road from Leakes Road to the southern side of the station.

Commuters will be able to turn in and out of the road using a signalised intersection at Leakes Road and Heartlands Boulevard.

This road and intersection will be built by a local developer, who is also developing land surrounding the station.

Design for now and the future

We are planning for the future of rail services through Tarneit.

With the proposed V/Line track duplication and electrification in future years, the design of West Tarneit Station will support additional tracks and any adjustments to the platforms that are needed.

The area north of the station has been designed to provide space for additional parking spaces, a second bus

interchange, and a vehicle access connection point into the station precinct to be added in the future.

Our design also ensures alignment with the proposed town centre and surrounding development, ensuring there will be cross corridor connections with the future precinct.

نحن نتحدث لغتك

West Tarneit التصاميم النهائية لمحطة الجديدة متاحة الآن.

ستشمل المحطة الجديدة تقاطعًا للحافلات بأربعة فتحات، ومواقف سيارات تتسع لـ 400 راكب، وممر سفلي للمشاة يسهل الوصول إليه. كما ستضم منطقة ترحيبية ومضاعة جيدًا وذات تنسيق حدائق مع مقاعد ومسارات منفصلة للمشاة وركوب الدراجات وأطواق للدراجات وتخزين آمن للدراجات. سيبدأ البناء الرئيسي في آب / أغسطس 2025، وسيتم افتتاح المحطة الجديدة في عام 2026.

يمكنك عرض التصاميم أو قراءة معلومات المشروع المترجمة أو طرح سؤال أو التسجيل في جلسة معلومات المجتمع في مركز المشاركة لدينا عبر الإنترنت.



امسح رمز الاستجابة السريعة ضوئيًا أو توجه إلى engage.vic.gov.au/west-tarneit-station للحصول على المزيد من المعلومات.

您可以用中文与我们沟通

West Tarneit 站的设计方案终稿现已公布。

新车站将设有一个四车位的公交换乘站、400 个停车位和一条无障碍下沉人行通道。车站还将设有一个温馨、明亮的区域，配有精心设计的绿化景观、供大家小憩的座位、独立的步行和自行车道、自行车环形停靠架和安全的自行车存放设施。新车站主体工程将于 2025 年 8 月开工，并于 2026 年投入使用。

您可以在我们的在线参与中心查看设计方案、阅读中文版项目信息、提出问题或注册参加社区信息会。

扫描二维码或访问 engage.vic.gov.au/west-tarneit-station 以获取更多信息。



અમે તમારી ભાષા બોલીએ છીએ

નવા પશ્ચિમ ટાર્નેટ સ્ટેશન માટેની અંતિમ ડિઝાઇન હવે ઉપલબ્ધ છે.

નવા સ્ટેશનમાં બસ બદલવાના ચાર વિસ્તારો, 400 પ્રવાસીઓ માટે પાર્કિંગ અને સુલભ રાહદારી અંડરપાસનો સમાવેશ થશે. તેમાં બેઠક, ચાલવાનાં અને સાઇકલ ચલાવવાનાં જુદાં માર્ગો, સાઇકલ ટ્રૂપ્સ અને સાઇકલ રાખવાની સુરક્ષિત વ્યવસ્થા સાથે આવકારદાયક, સારી રીતે પ્રકાશિત, બાગબગચીવાળું પ્રાંગણ પણ હશે. મોટું બાંધકામ ઓગસ્ટ 2025માં શરૂ થશે, અને નવું સ્ટેશન 2026માં ખુલશે.

તમે અમારા ઓનલાઇન એન્ગેજમેન્ટ હબ પર ડિઝાઇનનો જોઈ શકો છો, અનુવાદિત પ્રોજેક્ટ માહિતી વાંચી શકો છો, પ્રશ્ન પૂછી શકો છો અથવા સમુદાય માહિતી સત્ર માટે નોંધણી કરી શકો છો.



વધુ માહિતી માટે ક્યુઆર કોડ સ્કેન કરો અથવા engage.vic.gov.au/west-tarneit-station પર જાઓ.

हम आपकी भाषा बोलते हैं

नए वेस्ट टॉर्नेट स्टेशन के लिए अंतिम डिजाइन अब उपलब्ध हैं।

इस नए स्टेशन में चार-बे बस इंटरचेंज, 400 यात्रियों के लिए पार्किंग और एक सुलभ पदयात्री अंडरपास शामिल होगा। इसमें बैठने की जगह, सैर करने और साइकिल चलाने के अलग मार्ग, बाइक ट्रूप्स और साइकल आदि को सुरक्षित रखे जाने के स्थानों के साथ एक स्वागतमय, अच्छी तरह से रोशन लैंडस्केप (भूदृश्य) परिसर भी होगा। प्रमुख निर्माण-कार्य अगस्त 2025 में शुरू होगा, और नया स्टेशन 2026 में खुलेगा।

आप डिजाइन देख सकते हैं, परियोजना से जुड़ी अनुवाद की गई जानकारी पढ़ सकते हैं, सवाल पूछ सकते हैं या हमारे ऑनलाइन एंगेजमेंट हब पर सामुदायिक सूचना सत्र के लिए पंजीकरण कर सकते हैं।



और अधिक जानकारी के लिए QR कोड स्कैन करें या engage.vic.gov.au/west-tarneit-station पर जाएं।

ਅਸੀਂ ਤੁਹਾਡੀ ਭਾਸ਼ਾ ਬੋਲਦੇ ਹਾਂ।

ਨਵੇਂ ਵੈਸਟ ਟਾਰਨੇਟ ਸਟੇਸ਼ਨ ਦੇ ਅੰਤਿਮ ਡਿਜ਼ਾਈਨ ਹੁਣ ਉਪਲਬਧ ਹਨ।

ਇਸ ਨਵੇਂ ਸਟੇਸ਼ਨ ਵਿੱਚ ਚਾਰ-ਕਤਾਰਾਂ ਵਾਲਾ ਬੱਸ ਇੰਟਰਚੇਂਜ, 400 ਯਾਤਰੀਆਂ ਲਈ ਪਾਰਕਿੰਗ, ਅਤੇ ਸੁਵਿਧਾਜਨਕ ਪੈਦਲ ਯਾਤਰੀ ਅੰਡਰਪਾਸ ਸ਼ਾਮਲ ਹੋਵੇਗਾ। ਇਸ ਵਿੱਚ ਇੱਕ ਸਵਾਗਤਯੋਗ, ਚੰਗੀ ਤਰ੍ਹਾਂ ਰੌਸ਼ਨ, ਲੈਂਡਸਕੇਪਿੰਗ ਪ੍ਰੀਮਿੰਕਟ ਵੀ ਹੋਵੇਗਾ ਜਿਸ ਵਿੱਚ ਬੈਠਣ ਲਈ ਥਾਂਵਾਂ, ਪੈਦਲ ਚਾਲਕਾਂ ਅਤੇ ਸਾਈਕਲ ਲਈ ਵੱਖਰੇ ਰਸਤੇ, ਸਾਈਕਲ ਰੂਪਸ ਅਤੇ ਸੁਰੱਖਿਅਤ ਸਾਈਕਲ ਸਟੋਰੇਜ ਹੋਵੇਗੀ। ਵੱਡੇ ਪੱਧਰ ਦਾ ਨਿਰਮਾਣ ਅਗਸਤ 2025 ਵਿੱਚ ਸ਼ੁਰੂ ਹੋਵੇਗਾ, ਅਤੇ ਇਹ ਨਵਾਂ ਸਟੇਸ਼ਨ 2026 ਵਿੱਚ ਖੁੱਲ੍ਹੇਗਾ।

ਤੁਸੀਂ ਸਾਡੇ ਔਨਲਾਈਨ ਇਨਗੇਜਮੈਂਟ ਹੱਥ 'ਤੇ ਇਨ੍ਹਾਂ ਡਿਜ਼ਾਈਨਾਂ ਨੂੰ ਦੇਖ ਸਕਦੇ ਹੋ, ਅਨੁਵਾਦ ਕੀਤੀ ਪ੍ਰੋਜੈਕਟ ਜਾਣਕਾਰੀ ਪੜ੍ਹ ਸਕਦੇ ਹੋ, ਸਵਾਲ ਪੁੱਛ ਸਕਦੇ ਹੋ ਜਾਂ ਕਮਿਊਨਿਟੀ ਜਾਣਕਾਰੀ ਸੈਸ਼ਨ ਲਈ ਰਜਿਸਟਰ ਕਰ ਸਕਦੇ ਹੋ।



ਹੋਰ ਜਾਣਕਾਰੀ ਲਈ, ਇਸ QR ਕੋਡ ਨੂੰ ਸਕੈਨ ਕਰੋ ਜਾਂ engage.vic.gov.au/west-tarneit-station 'ਤੇ ਜਾਓ।

Chúng tôi nói ngôn ngữ của quý vị

Hiện đã có bản thiết kế cuối cùng cho Nhà ga West Tarneit mới.

Nhà ga mới sẽ bao gồm một trạm trung chuyển xe buýt bốn bên, bãi đậu xe cho 400 hành khách và một đường hầm dành cho người đi bộ. Nhà ga mới cũng sẽ có khuôn viên thân thiện, được chiếu sáng đầy đủ, cảnh quan đẹp mắt với ghế ngồi, lối đi bộ và đường dành riêng cho xe đạp, giá để xe đạp và khu vực cất giữ xe đạp an toàn. Công trình xây dựng chính sẽ bắt đầu vào tháng 8 năm 2025 và nhà ga mới sẽ đi vào hoạt động vào năm 2026.

Quý vị có thể xem các thiết kế, đọc thông tin dự án đã được dịch, đặt câu hỏi hoặc đăng ký tham gia buổi cung cấp thông tin cộng đồng đồng tại trung tâm tương tác trực tuyến của chúng tôi.



Quét mã QR hoặc truy cập engage.vic.gov.au/west-tarneit-station để biết thêm thông tin.



If you don't see your language on this page, please call 9209 0147.



View of the southwestern station entry stairs and ramp. Mature trees and plants shown. Artist impression only, subject to change.

What to expect during construction

With site establishment complete, we are starting our major works to ensure we meet the construction milestones for this important new infrastructure for the west of Melbourne.

Site establishment

We have established two temporary site access roads, located on the south and north sides of the rail line, to ensure we have safe access for our work crews to the project site.

We have set up our temporary site offices, workforce parking and material storage areas in these two locations.

All construction areas and temporary roads are fenced off to ensure the safety of the community and our crews.

Major construction

Major construction has now commenced. We'll make every effort to minimise construction impacts, such as noise, dust and vibration.

Major construction activities will include larger scale works, such as excavation and structural works, to build West Tarneit Station.

We'll keep the community informed about any changes or disruptions to the way you travel, as well as key project milestones.

When major construction is finished in 2026, the station will open for the community to use.



Stay up to date

Sign up for email updates at levelcrossings.vic.gov.au/subscribe

Sign up for SMS updates by texting **WEST TARNEIT** to **0427 840 967**

For more information visit the project page at bigbuild.vic.gov.au/west-tarneit-station

Project timeline



2023

- Early development and planning work
- Site investigations



Late 2024

- Concept designs released
- Community engagement



Mid 2025

- Final designs released
- Major construction commences



2026

- Station opens
- Major construction complete

* Timeline subject to change.



View the final designs and find out more

Scan the QR code or head to engage.vic.gov.au/west-tarneit-station to find out more and book your place at an in-person or online information session.

Delivered by the Level Crossing Removal Project

levelcrossings.vic.gov.au

contact@levelcrossings.vic.gov.au



For languages other than English, please call 9209 0147.

1800 105 105 (call anytime)

Please contact us if you would like this information in an accessible format. If you need assistance due to a hearing or speech impairment, visit relayservice.gov.au

