

Construction update



State Library Station

September 2025

The Metro Tunnel Project's State Library Station is continuing the final phase of construction, fit-out of the underground station and reinstatement of community space.

Opening later this year, the Metro Tunnel will create a new end-to-end rail line from Sunbury in the west to Cranbourne/Pakenham in the south-east, with bigger and more modern trains, and five new stations.

Works snapshot: September 2025

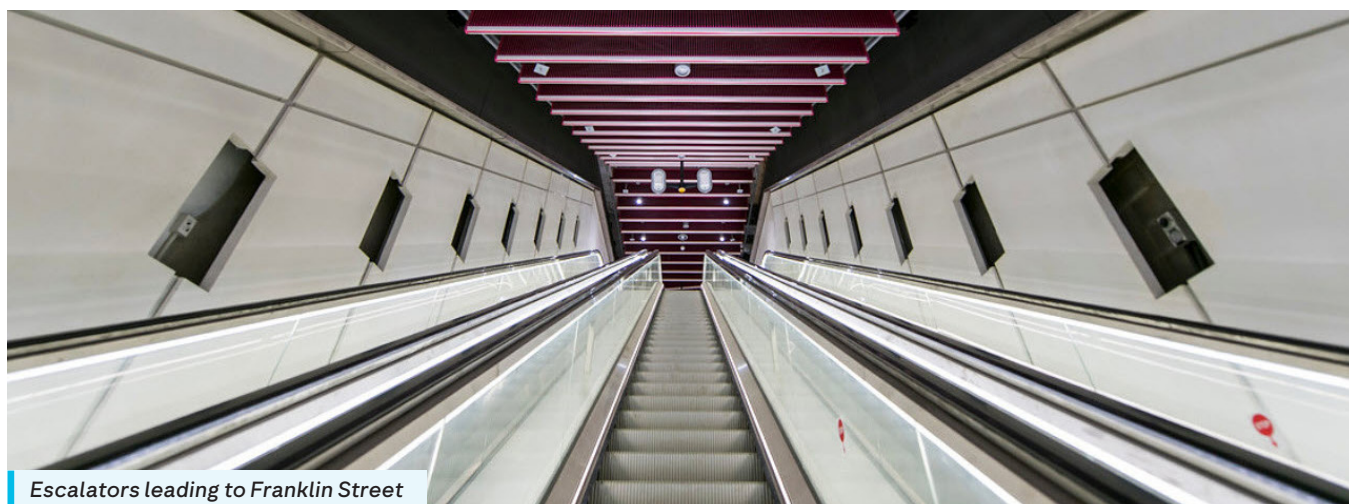
During August significant progress was made at the A'Beckett Street site with capping beam removal works now complete and the worker sheds, which have been in place since 2019, now removed. Public realm and reinstatement works are now underway at A'Beckett Street and will continue for September and October including utilities, street furniture, planting, footpath and road reinstatement.

Inside the station works are nearing completion with final fittings like glass balustrades are being installed and important systems like lifts and escalators are being switched on and tested.

Further information on these works can be found overleaf or at metrotunnel.vic.gov.au

Construction works within the State Library Station precinct over the next month include:

- Station entrance and underground fit-out works at the La Trobe, A'Beckett and Franklin Street sites
- Public realm works on Swanston, La Trobe, Little La Trobe, Victoria and Franklin streets.



Escalators leading to Franklin Street



Sign up for updates
Subscribe for email and SMS updates
at metrotunnel.vic.gov.au/subscribe

Construction partner:



Cross
Yarra
Partnership



When are we working?



Normal construction hours

7am to 6pm, Monday to Friday
7am to 1pm, Saturdays



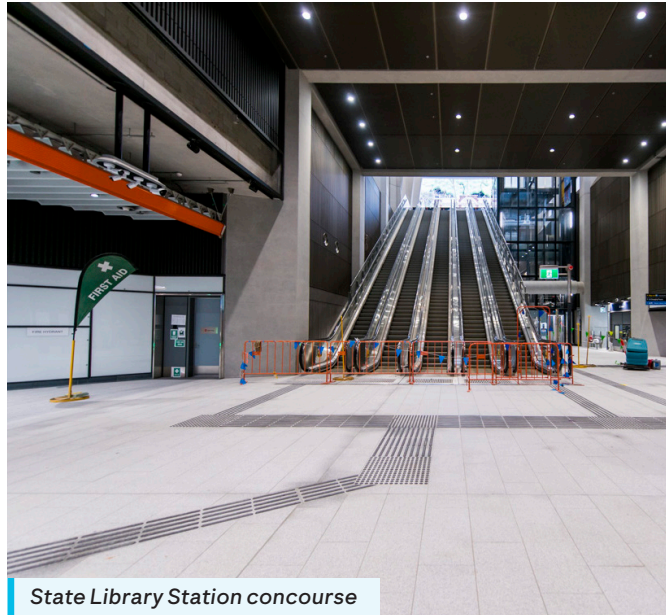
Out of hours

Some works are required to take place out of normal construction hours



24 hours

24 hour works are sometimes required during peak construction activities



State Library Station concourse

Upcoming works in your area

La Trobe Street site

Monday to Friday 7am to 6pm
Saturdays 7am to 1pm



- Fit-out of the station is nearing completion with works including floors, walls, cladding, lifts and escalators. This involves the use of cranes, elevated work platforms, scaffolding, forklifts, generators and other tools and equipment
- Intermittent partial closures of La Trobe Street northern footpath and the Swanston Street western footpath are required. Through access for pedestrians and access to businesses is being maintained (see map)
- Ventilation equipment operation will be required during works below ground, and site lighting will be required for night work.

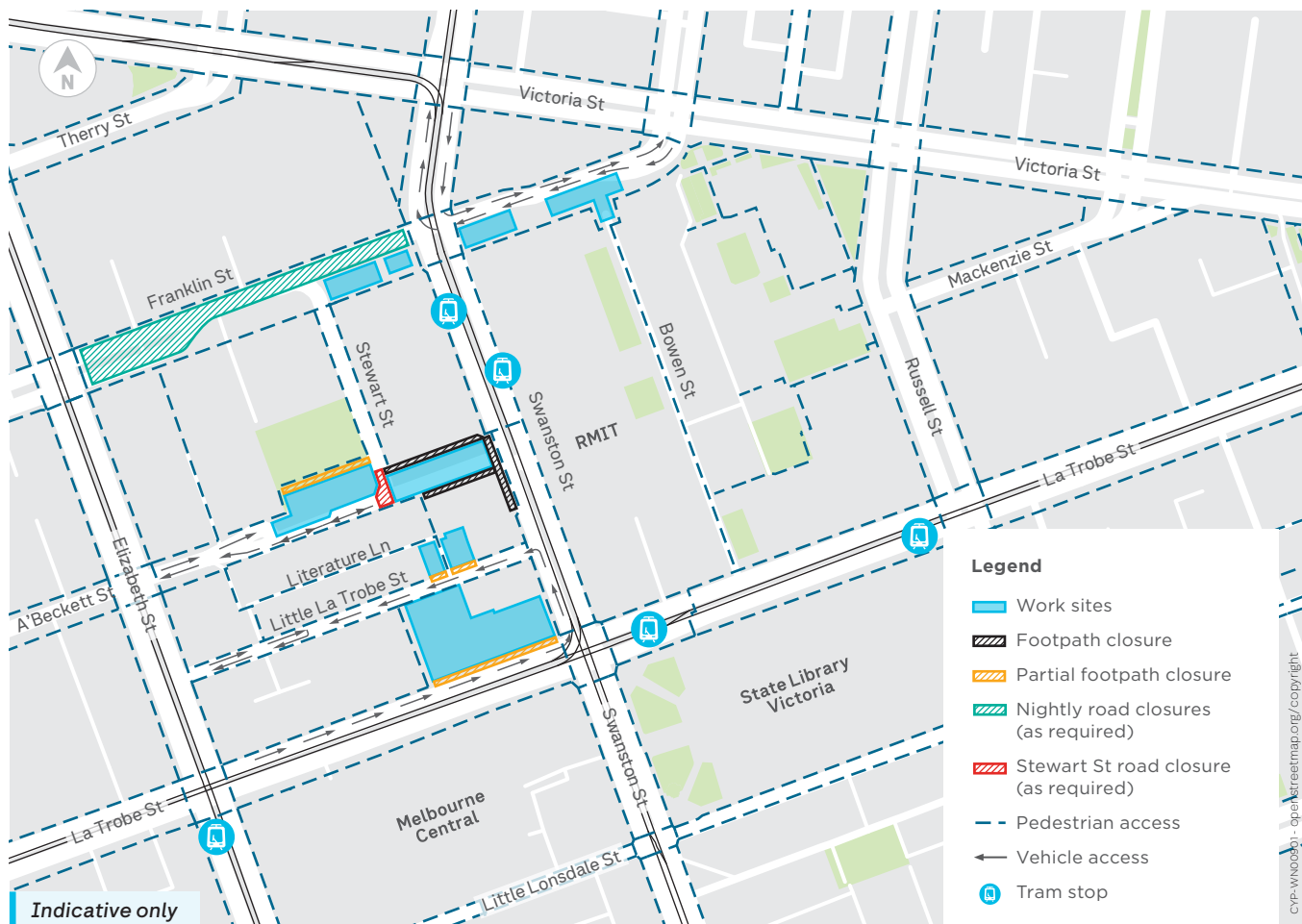
Little La Trobe Street site

Monday to Friday 7am to 6pm
Saturdays 7am to 1pm



- Works continue on the station's service buildings and public realm and reinstatement works in Little La Trobe Street
- Public realm works are intermittent at Little La Trobe Street and can generate low to medium levels of noise
- Works include the use of hand tools including grinding and saw cutting
- Small satellite sites may be required with access to pedestrians maintained
- Work on the station's service buildings are continuing with small satellite closures required at times. Pedestrian access through the lane will be maintained
- Partial closures of the northern footpath on Little La Trobe and Literature Lane at the East and West Building will be required to install signage, lighting and external cladding. Laneway access into A'Beckett Street will be maintained
- Deliveries to the La Trobe Street site will involve the use of trucks and a forklift on Little La Trobe Street. These deliveries will occur under the direction of traffic controllers.

Works area map



A'Beckett Street site

24-hours, Monday to Sundays, ongoing

Stewart Street road closures

24-hours, ongoing

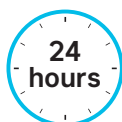
A'Beckett Street northern and southern footpath closure between Swanson and Stewart streets

24-hours, ongoing

Swanson Street western footpath closure at A'Beckett Street

24-hours, ongoing

- Capping beam removal works are now complete at A'Beckett Street and the worker sheds have also been removed
- Public realm and reinstatement have commenced and requires the dual closure of the northern and southern footpaths between Swanson and Stewart streets. Pedestrian diversions are in place and access to businesses and residential buildings will be maintained via Elizabeth and Stewart streets
- Public realm and reinstatement works include the use of a jackhammer, excavator, saw cutting, vacuum trucks, concreting, paving, hand tools, road profiling, asphaltting and line marking and are expected to produce medium to high levels of noise
- A closure of A' Beckett Street is required to facilitate reinstatement works, local access will be maintained with access to A' Beckett Towers via Stewart and Franklin streets



- Paving works are being completed on Swanson Street between 409 Swanson Street (Druids house) and A'Beckett Street. A temporary footpath has been established to maintain pedestrian access and four car spaces have been temporarily occupied to facilitate the on-road pedestrian diversion
- This work requires the temporary removal of parking bays on Swanson Street. Alternative loading and accessible parking bays are available in Little La Trobe Street
- The footpath closure will remain in place at the Swanson Street western footpath at A'Beckett Street on completion of these works to allow for site deliveries and for public realm and reinstatement work. A pedestrian diversion will be in place
- Intermittent closures of the RMIT basketball court footpath connecting Stewart and A'Beckett streets will be required at times
- During this footpath closure, a detour route will be available from 7am to 5pm through the RMIT basketball courts. Please note this detour includes stairs and an accessible pedestrian detour is available via Elizabeth Street
- Some works at the Swanson Street end of the A'Beckett site are required to take place when trams aren't running and will generate medium to high levels of noise. Please contact the project team if you have any concerns
- Pedestrian access to buildings will be maintained at all times.

Franklin Street site

24-hours, Monday to Sunday, ongoing

Franklin Street road closure between Elizabeth and Swanston streets

Nightly closures, Monday to Friday, as required

Stewart Street road closure at the intersection of Stewart and Franklin streets

As required, Monday to Sunday, ongoing

Franklin Street northern and southern footpath closure between Stewart and Victoria street

As required, 24 hours Monday to Sunday, ongoing

Franklin Street bike lane closure

As required, Monday to Saturday

- Works to remediate sections of the Franklin Street road surface between Elizabeth and Swanston Street are taking place
- These works will include profiling, asphaltting and line marking which may produce low to medium levels of noise and some vibrations
- Franklin Street will be closed overnight between Elizabeth and Stewart streets for two nights from 6pm to 4am on 2 and 3 September and between Elizabeth and Swanston streets for three nights from 6pm to 4am on 4, 8 and 9 September
- Franklin Street will remain open to vehicles during the day and pedestrian access to businesses and residential buildings will be maintained at all times
- Works continue on the Franklin Street reinstatement and public realm works, on the aboveground service buildings, as well as construction and fit-out of the station passenger areas and operational rooms
- These works include, saw cutting, concreting, paving, road profiling, asphaltting and line marking and can produce medium to high levels of noise
- Deliveries to Franklin Street are ongoing. Truck access to the Franklin Street West site is from Elizabeth and Swanston streets and deliveries to the Franklin Street East site are via Victoria Street. Stop and hold arrangements are in place
- Public realm and reinstatement work continue on the northern and southern footpath including between Elizabeth and Victoria streets. The works are taking place in stages, with access to business, residential and RMIT buildings maintained (see map).



Groundwater monitoring

Victoria, Franklin, Swanston and Therry streets

Monday to Fridays, 7pm to 5am under lane closure (as required)

- Intermittent testing of previously installed groundwater wells on Victoria, Franklin, Swanston and Therry streets on the road and footpath is ongoing
- This involves setting up small, localised traffic controls on footpaths and overnight lane closures with traffic management in place.



Over station development

A multi-level building will be built by Scape above State Library Station.

This development is not part of the Metro Tunnel Project.

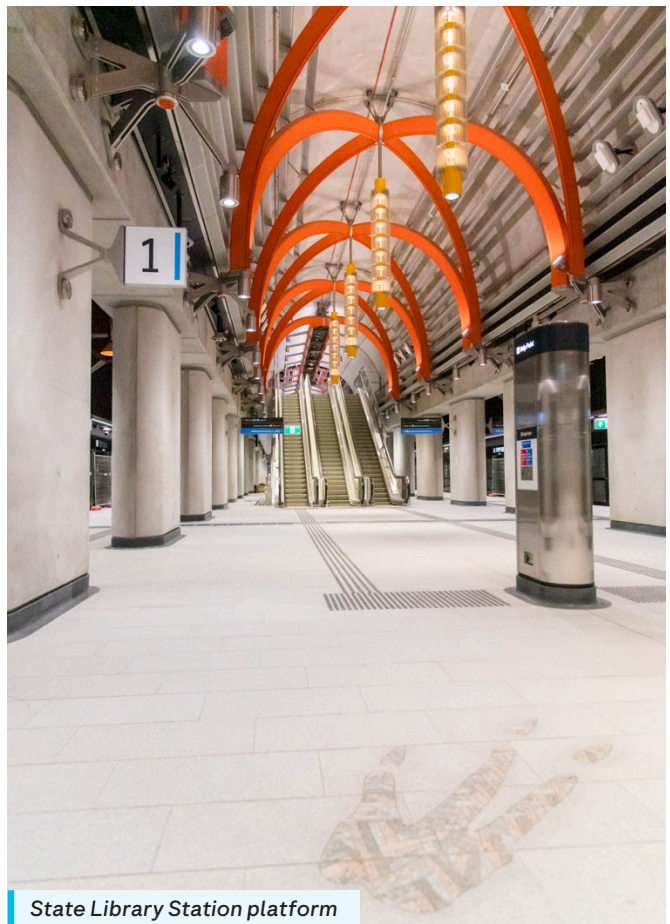
For more information, visit metrotunnel.vic.gov.au/osd

Oversize deliveries

All sites

10pm to 7am, ongoing

- In addition to regular deliveries to site, out of hours deliveries will occur intermittently to minimise traffic disruption and ensure the safety of the public and our workers.



State Library Station platform



Business support

While the new State Library Station will be a significant boost for the local area, construction activities can impact local businesses.

In response to this, our Business Support Team assists businesses through the disruption and any permanent changes that will take place.

Please see the promotion in this notification for **No. 1 Spicy Pot** located at **Shop 1, 31 A'Beckett Street, Melbourne.**

We look forward to promoting more local businesses during the final months of the project.

Find out more

metrotunnel.vic.gov.au

1800 105 105 (call anytime)



For languages other than English
please call (03) 9209 0147



Please contact us if you would like this information in an accessible format. If you need assistance due to a hearing or speech impairment, visit relayservice.gov.au



No. 1 Spicy Pot



DINE-IN SPECIALS

~~WAS \$31.90~~ NOW \$24.90

一人香锅套餐：任选6种配菜 + 米饭 + 饮料

Spicy Pot Meal for One: Any Six Small Dish + Rice + Drink

~~WAS \$53.90~~ NOW \$44.90

二人套餐：鸡肉香锅 + 上海粗炒面（牛肉）
+ 2个饮料

Meal for Two: Classic Chicken Spicy Pot + Shanghai Fried Noodle with Beef + 2 drinks



Open 7 days: 11am–11pm

Shop 1, 31 A'Beckett Street,
Melbourne VIC 3000
m. 0406 070 098

