



**SUBURBAN  
RAIL LOOP**

# **Air Quality Monthly Report**

## **Early Works**

## **Tunnels South**

## **Tunnels North**

19 July – 18 August 2025



**SUBURBAN  
RAIL LOOP**  
AUTHORITY



# Introduction

This summary report presents the results of the monthly air quality monitoring data for the construction of SRL East. Laing O’Rourke (LOR) is delivering the Early Works (EW) as Managing Contractor (MC), Suburban Connect is delivering the Tunnels South works as Principal Contractor (PC) and Terra Verde is delivering the Tunnels North works as PC. The three delivery partners have individually prepared reports to comply with the Environmental Performance Requirement (EPR) for Air Quality.

SRL East Early Works include road modifications, relocation of underground services, ground improvement works, tram terminus works, and site preparations for tunnel boring machines.

SRL East Tunnels South is a fully tunnelled metro corridor between Cheltenham and Glen Waverley. The delivery scope encompasses station boxes and twin segmentally lined bored tunnels with cross passages.

SRLA East Tunnels North is a fully tunnelled metro corridor between Glen Waverley and Box Hill. The delivery scope encompasses an Emergency Support Facility Structure, station boxes, and twin segmentally lined bored tunnels with cross passages.

# Appendices

Appendix 1 – Early Works

Appendix 2 – Tunnels South

Appendix 3 – Tunnels North

LAING O'ROURKE

Box Hill

Burwood

Glen Waverley

Monash

Clayton

Stabling facility

Cheltenham

# Suburban Rail Loop East Early Works Air Quality Monthly Report

19 July 2025 – 18 August 2025

## Document Information

Document Details	
Issue Date	08/09/2025
Revision Number	C
Status	Issued for Review

## Revision Control

Revision Number	Change Detail	Date	Comment
A	Draft issued to SRLA	22/08/2025	Issued for Review
B	Draft issued to SRLA	29/08/2025	Issued for Review
C	Draft issued to SRLA	08/09/2025	Issued for Review

# Contents

<b>Document Information .....</b>	<b>2</b>
<b>Revision Control .....</b>	<b>2</b>
<b>Glossary .....</b>	<b>4</b>
<b>Executive Summary.....</b>	<b>5</b>
<b>1. Introduction.....</b>	<b>6</b>
1.1. Suburban Rail Loop East.....	6
1.2. Environmental Management Framework.....	7
<b>2. Air Quality Monitoring .....</b>	<b>8</b>
2.1. Context .....	8
2.2. Purpose .....	8
2.3. Monitoring Locations.....	9
2.4. Data Limitations and Verification .....	10
<b>3. Results.....</b>	<b>11</b>
3.1. Box Hill.....	11
3.2. Burwood .....	12
3.2.1. Analysis .....	13
3.3. Glen Waverley.....	14
3.3.1. Analysis .....	15
3.4. Monash.....	16
3.5. Clayton.....	17
3.6. Heatherton.....	18
3.6.1. Analysis .....	19
3.7. Cheltenham .....	20
<b>4. Meteorological Conditions .....</b>	<b>21</b>
<b>5. Quality Assurance .....</b>	<b>24</b>
5.1. Data Capture .....	24
5.2. Data Validation .....	25

## Glossary

**$\mu\text{g}/\text{m}^3$**  – micrograms per cubic metre is a unit of measurement used to measure the mass of air pollutants (micrograms) per volume of air (cubic metre) as a concentration.

**Environment Effects Statement (EES)** – In Victoria, environment assessment of the potential environmental impacts or effects of a proposed development under the *Environment Effects Act 1978*.

**Environmental Air Quality and Dust Management Plan (EAQDMP)** – The EAQDMP is environmental management documentation prepared by the MC to manage and monitor air quality impacts during construction of SRL East. It includes the RMMP and TARP and is verified by the IEA.

**Environmental Management Framework (EMF)** – The purpose of the EMF is to provide a transparent and integrated framework to manage environmental effects of the SRL East Project during construction and operation to achieve acceptable environmental outcomes.

**Environmental Performance Requirements (EPRs)** – The EPRs define the environmental outcomes that must be achieved during the design, construction and operation of SRL East and are included within the EMF.

**Environment Protection Authority (EPA)** - Victorian regulator established under the *Environment Protection Act 2017* and which has the statutory objective to protect human health and the environment from the harmful effects of pollution and waste.

**Environmental Reference Standard (ERS)** – The ERS is a tool made under the *Environment Protection Act 2017* to identify and assess environmental values, including air quality, in Victoria.

**Independent Environmental Auditor (IEA)** – The IEA is appointed by the Victorian Government to undertake independent environmental reviews and audits of project activities including assessing compliance with the EMF and EPRs.

**$\text{PM}_{10}$**  – Particulate matter with an aerodynamic diameter of 10 micrometres ( $\mu\text{m}$ ) or less.  $\text{PM}_{10}$  particles are small enough to have a potential impact on human health.

**Risk Management and Monitoring Program (RMMP)** – this plan outlines the approach to air quality monitoring and includes instrumental, visual monitoring, TARP and public reporting processes. The RMMP forms part of the EAQDMP.

**Trigger Action Response Protocol (TARP)** – The TARP defines a series of adaptive management measures that are implemented to avoid or mitigate impacts from dust emissions for nearby sensitive receptors in response to the results from monitoring. The TARP forms part of the EAQDMP.

**TARP Triggered During the Reporting Month** – This refers to the number of days TARP trigger criteria or the Air Quality Objective was exceeded during the reporting month.

**TARP Actions Implemented During the Reporting Month** – This refers to the number of additional TARP mitigation measures or actions required to be implemented as a response to project related exceedances. These actions are in addition to existing controls implemented on site.



## Executive Summary

### Key Outcomes

Key outcomes arising from the monthly air quality monitoring program:

- In Box Hill all Early Works are complete, and all monitors have been decommissioned.
- In Burwood, the TARP was not implemented during the reporting period. Proactive dust mitigation measures were implemented throughout the month, including routine water cart and hose use on exposed soil. Additional controls included maintaining stockpiles below hoarding heights and covering truck loads prior to exiting the site.
- In Glen Waverley, the TARP was not implemented during the reporting period. Throughout the month, frequent water cart and hose use was implemented to dampen exposed soil, and stockpiles were stored in an area enclosed by hoarding which acts as a wind barrier to minimise wind carrying dust.
- In Monash, all Early Works are complete, and all monitors have been decommissioned.
- In Clayton, all Early Works are complete, and all monitors have been decommissioned.
- In Heatherton, the TARP was not implemented during the reporting period. Water carts and hoses were used during excavation, and material and spoil haulage. Dust was reduced by application of soil binder on stockpiles, regular street sweeping, and covering truck loads prior to leaving the site.
- In Cheltenham all Early Works are complete, and all monitors have been decommissioned.

Further explanation is provided in Section 3 regarding these observations.

### Purpose of the Report

This report presents the results of the monthly review of the air quality monitoring data for each Suburban Rail Loop (SRL) East Early Works construction site for the period between 19 July 2025 and 18 August 2025 in accordance with SRL East EMF and EPRs AQ1 and AQ2. Laing O'Rourke is delivering the Early Works as Managing Contractor (MC). Early Works for SRL East commenced at Burwood in May 2023, Box Hill in June 2023, Monash and Heatherton in October 2023, Clayton in December 2023, and Glen Waverley and Cheltenham in March 2024.

The MC implements an air quality monitoring program on each site that includes both visual observation and instrumental air quality monitoring. The purpose of the air quality monitors is to measure the concentration of small dust particles in the air near the construction site. These particles, known as PM<sub>10</sub>, have the potential to impact human health. PM<sub>10</sub> refers to particles with an aerodynamic diameter of 10 µm or less.

Measured PM<sub>10</sub> concentrations may be compared to air quality objectives that are defined in the ERS which is a tool under the *Environment Protection Act 2017*. The ERS sets out the air quality objectives for PM<sub>10</sub> which are measured over a 24-hour averaging period. The objectives are risk-based concentrations that are not intended to be compliance levels, but they assist the MC to understand the risk to human health. When the instrumental monitor and/or visual observations identify a change in site conditions this prompts the MC to implement mitigations on site to reduce dust impacts, and review measures applied.

### Scope of Reporting

This report does not include works delivered as SRL Initial Works. The SRL Initial Works, which include investigative works, protective works, moving underground services, ground improvement works (such as at the Stabling Facility at Heatherton) and minor road modifications were subject to a separate approval process under Clause 52.30 of the Victoria Planning Provisions (VPP) and were approved by the Minister for Planning on 19 December 2021. These works are required to comply with Clause 52.30 of the VPP and are not subject to the EMF and EPRs.

This report does not include monitoring related to asbestos containing material removal, which is monitored and reported separately.

## Results

The key findings are summarised in Table 1. An analysis of these findings is provided in Section 3.

Table 1: Summary of air quality monitoring results for reporting period.

Location	Parameter	Averaging Period	Max Concentration (µg/m³)	Median Concentration (µg/m³)	Days TARP Triggered in the Month	Days TARP Implemented in the Month
Representative Background <sup>1</sup>						
Alphington	PM <sub>10</sub>	24-hour	22.5	14.9	-	-
Dandenong	PM <sub>10</sub>	24-hour	24.6	13.6	-	-
Burwood						
Corner of McComas Grove and Sinnott Street	PM <sub>10</sub>	24-hour	13.9	6	0	0
16 McComas Grove	PM <sub>10</sub>	24-hour	12.6	5		
Site 4 – East	PM <sub>10</sub>	24-hour	15	5.9		
Site 4 – West	PM <sub>10</sub>	24-hour	18.5	9.4		
Site 1 – South	PM <sub>10</sub>	24-hour	18.3	9.9		
Glen Waverley						
Site 1 North	PM <sub>10</sub>	24-hour	18.2	8.5	0	0
Heatherton						
SSY - South	PM <sub>10</sub>	24-hour	25.6	13.2	0	0
Site Office	PM <sub>10</sub>	24-hour	18.0	8.5		
SS17	PM <sub>10</sub>	24-hour	25.9	10.8		

# 1. Introduction

## 1.1. Suburban Rail Loop East

SRL will deliver a 90km rail line linking every major suburban line from the Frankston Line to the Werribee Line via Melbourne Airport, better connecting Victorians to jobs, retail, education, health services and each other. Construction of SRL East from Cheltenham to Box Hill is underway and will connect major employment, health, education and retail destinations in Melbourne's east and south-east. The new underground train line will reduce travel times, and connect people travelling on the Gippsland corridor. Construction of SRL East is creating up to 8000 direct local jobs, with trains running in 2035.

Early Works for SRL East commenced at Burwood in May 2023, Box Hill in June 2023, Monash and Heatherton in October 2023, Clayton in December 2023, Glen Waverley and Cheltenham in March 2024. Laing O'Rourke is delivering the Early Works as MC. Early Works include:

- Road modifications
- Moving underground services
- Ground improvement works

<sup>1</sup> The EPA monitoring station at Dandenong is used as the representative control site for Heatherton. The EPA monitoring station at Alphington is used as the representative control site for Cheltenham, Clayton, Monash, Glen Waverley, Burwood and Box Hill.



- Tram terminus works, and
- Site preparations for tunnel boring machines.

This report does not include works delivered as SRL Initial Works. The SRL Initial Works, which includes investigative works, protective works, utility relocations and installations, ground improvement works (such as at the Stabling Facility at Heatherton) and minor road modifications, were subject to a separate approval process under Clause 52.30 of the VPP and were approved by the Minister for Planning on 19 December 2021. These works are required to comply with Clause 52.30 of the VPP and are not subject to the EMF and EPRs.

## 1.2. Environmental Management Framework

The EMF for SRL East (the Project) provides a transparent and integrated framework to manage environmental effects of the Project and includes EPRs that define environmental outcomes that must be achieved during the design, construction, and operation phases the SRL East website at <https://bigbuild.vic.gov.au/library/suburban-rail-loop/planning/srl-east-environmental-management-framework>.

The development of the EMF has been informed by relevant legislation, policy and guidelines, and the specialist impact assessment studies completed for the SRL East EES and the Minister's Assessment, dated 5 August 2022.

The EMF requires the MC to develop and implement an EAQDMP. As part of implementing this plan, the MC is required to conduct monitoring of PM<sub>10</sub> concentrations and measure wind speed and direction at each Early Works construction site and at a representative control site. The EAQDMP also includes a TARP which defines a set of triggers that prompt actions on site to reduce dust impacts, and review mitigation measures applied. The EMF, and therefore this report, is not applicable to SRL Initial Works activities.

The MC regularly reviews the monitoring data at each site, for the purpose of assessing the effectiveness of EAQDMP implementation. The verified results of the PM<sub>10</sub> monitoring for the applicable monthly period are contained in this report, which will be available to the public, in accordance with the requirements of the EMF.

## 2. Air Quality Monitoring

### 2.1. Context

Maintaining air quality is important for public health, the liveability of our cities and our environment. Overall air quality conditions in Melbourne are good, however like all major cities, there are days where the background concentrations of air pollutants are very high on a regional basis. Sometimes these elevated concentrations are due to regional influences such as windblown continental dust, bushfires or hazard reduction burns. Emissions from traffic, home heating, and industrial emissions across Melbourne can also cause high background concentrations, especially when the weather is calm. EPA monitoring stations measure these background levels of pollution that already exist in the air within the surrounding area. The EPA monitoring station at Dandenong is used as the representative control site for Heatherton and Cheltenham, and the EPA monitoring station at Alphington is used as the representative control site for all other SRL work sites.

Without effective management, construction of the Project has the potential to contribute to these background concentrations which may impact public health. Comparison of SRL East monitoring results with publicly available EPA monitoring data is used by the MC to identify when construction-related activities are impacting local air quality, and conversely when the local air quality results may be influenced by background conditions outside of the influence of the construction site.

Meteorological conditions such as wind direction and speed can impact on the dispersion of particulates in the air and by monitoring these, the MC can respond when conditions on site change. Having records of wind conditions is also helpful for retrospectively identifying the activity that is causing any elevated dust concentrations.

### 2.2. Purpose

The purpose of the air quality monitors is to measure the concentration of small dust particles in the air near the construction site. These particles, known as PM<sub>10</sub> have the potential to impact human health. PM<sub>10</sub> refers to particles with an aerodynamic diameter of 10 µm or less.

The measured concentrations are compared to air quality objectives that are defined in the ERS which is a tool under the *Environment Protection Act 2017*. The air quality objectives defined in the ERS informed the objectives for air quality for the Project, noting that the ambient air ERS is not a compliance standard that one can pollute up to. The ERS does not provide an indicator or objective for nuisance dust.

The objectives are risk-based concentrations that are not intended to be compliance levels, but they assist the MC to understand the risk to human health. The ERS sets out the air quality objectives for PM<sub>10</sub> which are measured over a 24-hour averaging period, as reproduced below in Table 2.

Table 2: Ambient air quality objectives for PM<sub>10</sub>.

Indicator	Air Quality Objective (µg/m³)	Averaging Period
Particles as PM <sub>10</sub> (maximum concentration)	50	24-hour

The measured concentrations (which include both existing background concentrations and the Project's incremental contribution over a 24-hour period) are presented in Section 3. Monitoring is continuous, even when there are no construction-related activities occurring on the site. Periods of time where there are no site activities are classified as 'Out of Hours'. The potential for dust generation from the work sites is much lower when there are no site activities occurring, however dust can still be generated at the work site during "Out of Hours" periods due to wind erosion.

## 2.3. Monitoring Locations

Air quality monitors are located on or adjacent to the Early Works construction sites, to represent local air quality conditions, in positions that enable the MC to adequately measure potential impact of works on local sensitive receivers including residents. This does not include monitoring undertaken as part of the SRL Initial Works as outlined in Section 1.1.

The air quality monitors were installed on the following dates at each of the following locations. The location of these monitors is shown on maps in Section 3 of this Report.

Table 3: Air quality monitoring locations active during reporting period.

Monitoring Location	Date Commissioned	Coordinates	Monitoring Parameters	Representative Control Site
Burwood – 16 McComas Grove	18 May 2023	Latitude: -37.851494° Longitude: 145.1116°	PM <sub>10</sub>	Alphington EPA monitoring station
Burwood – Site 4 – West	16 February 2024	Latitude: -37.850521° Longitude: 145.11009°	PM <sub>10</sub>	Alphington EPA monitoring station
Burwood – Site 4 – East	20 February 2024	Latitude: -37.850586° Longitude: 145.11188	PM <sub>10</sub>	Alphington EPA monitoring station
Burwood – Corner of McComas Grove and Sinnott Street	18 May 2023	Latitude: - 37.852413° Longitude: 145.11252°	PM <sub>10</sub>	Alphington EPA monitoring station
Burwood – Site 1 South	08 May 2024	Latitude: -37.8549° Longitude: 145.10995°	PM <sub>10</sub>	Alphington EPA monitoring station
Glen Waverley – Site 1 North	19 August 2024	Latitude: -37.880739° Longitude: 145.160738°	PM <sub>10</sub>	Alphington EPA monitoring station
Heatherton – SSY – South	29 May 2023	Latitude: -37.955917° Longitude: 145.10239°	PM <sub>10</sub>	Dandenong EPA monitoring station
Heatherton – SSY – Site Office	22 January 2024	Latitude: -37.95401° Longitude: 145.10062°	PM <sub>10</sub>	Dandenong EPA monitoring station
Heatherton – SSY – SS17	26 March 2025	Latitude: -37.9544° Longitude: 145.0975 °	PM <sub>10</sub>	Dandenong EPA monitoring station

## 2.4 Data Limitations and Verification

The following limitations apply to this data:

- Meteorological conditions on site can affect measurements made by monitoring devices. For instance, dust measurements can be impacted by rainfall, fog and/or humidity (with water droplets in the air being mistaken as dust particles). Displaying periods of inclement weather allows reviewers to identify measurements that may have been impacted.
- The monitors that measure dust concentrations and noise are located within the construction site close to the nearest homes. However, the measured levels at the nearest homes and beyond are usually less than what is measured by the monitor. This is due to the monitor being located closer to the source, due to the security requirements for the monitoring equipment.
- Monitors have been placed to record air quality and airborne noise at each site, however monitors may need to be moved as works progress. Air Quality monitoring devices are located in accordance with AS/NZS 3580.1.1-2016: Methods for sampling and analysis of ambient air (the Standard). This Standard specifies that locations must be representative of the location being monitored, which in this case is offsite receptors. Specifically, Section 7 of the Standard emphasises that locations should not be unduly influenced by immediate surroundings. Locating a monitoring device too close to the works results in increased readings as the space for air quality pollutants (i.e. dust) to dissipate is not representative of emissions at the offsite receptors. Therefore, depending on the location of the works on site and the monitoring device, the device may be moved to best represent impacts to offsite receptors, while also maintaining security and safe access.
- Breaks in data availability may occur due to sensor outages, instrument errors, technical issues, or removal of sensors during non-working periods to ensure the security of the equipment.

Data are provided in tabular and graphical form in Section 3 to visually present 24-hour averages of PM<sub>10</sub> over the monthly period. The data included in this report have been verified by the MC and relevant subject matter experts.

## 3. Results

Data is provided in graphical form below to visually present 24-hour averages of PM<sub>10</sub> dust concentration over the monthly period for each active construction site. Where the TARP has been implemented due to works occurring on the construction sites, an analysis is presented for discussion.

### 3.1. Box Hill

No Early Works took place at Box Hill during the reporting period, therefore no monitoring was required.

## 3.2. Burwood

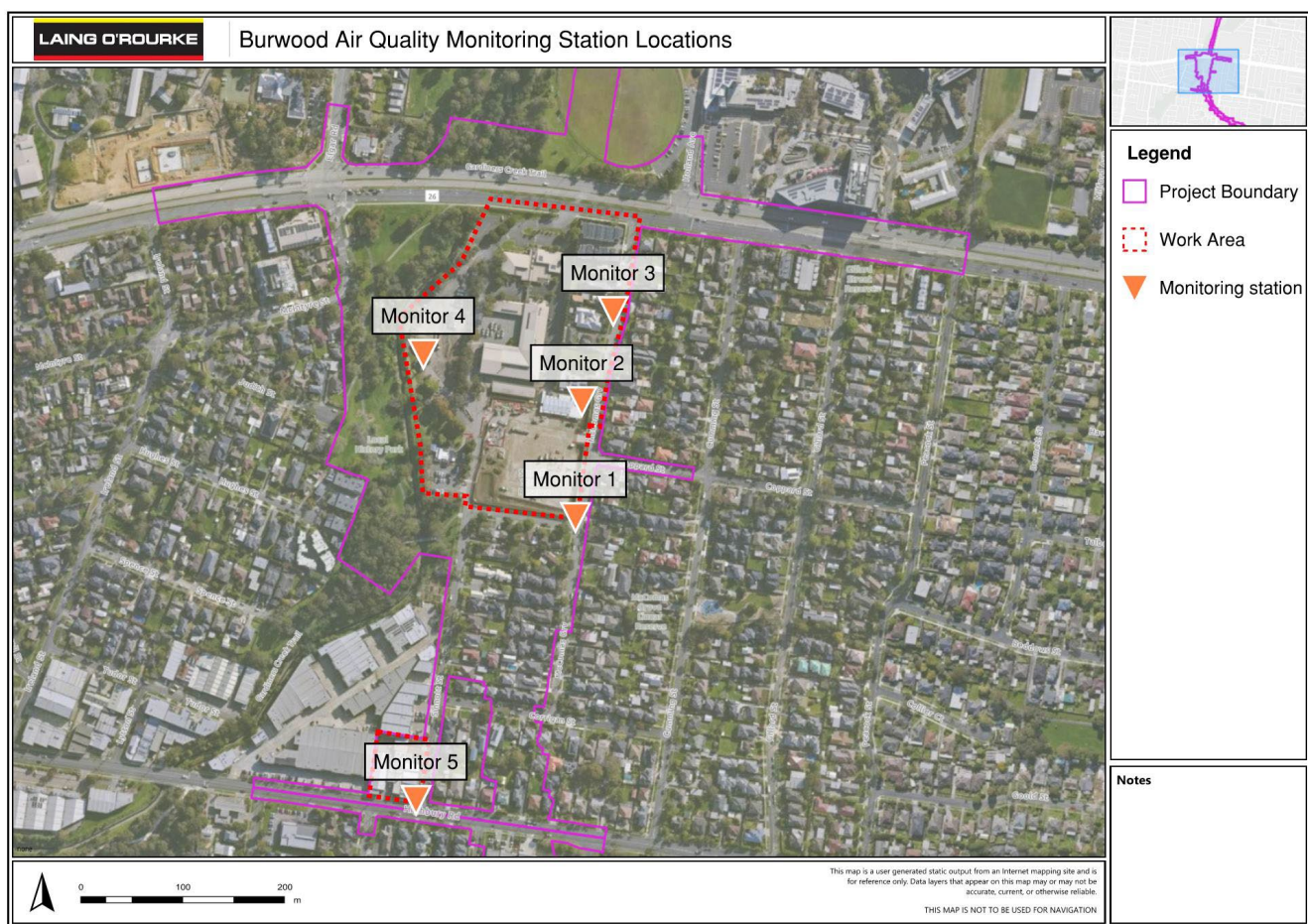


Figure 1: Burwood air quality monitoring stations.

Table 4: Burwood PM<sub>10</sub> results.

Monitor Number	Monitoring Location	Max Daily PM <sub>10</sub> Concentration (µg/m <sup>3</sup> )	Median Daily PM <sub>10</sub> Concentration (µg/m <sup>3</sup> )	Days TARP Triggered in the Month	Days TARP Implemented in the Month
-	Representative Background - Alphington	22.5	14.9	-	-
1	Corner of McComas Grove and Sinnott Street	13.9	6	0	0
2	16 McComas Grove	12.6	5		
3	Site 4 - East	15	5.9		
4	Site 4 – West	18.5	9.4		
5	Site 1 – South	18.3	9.9		



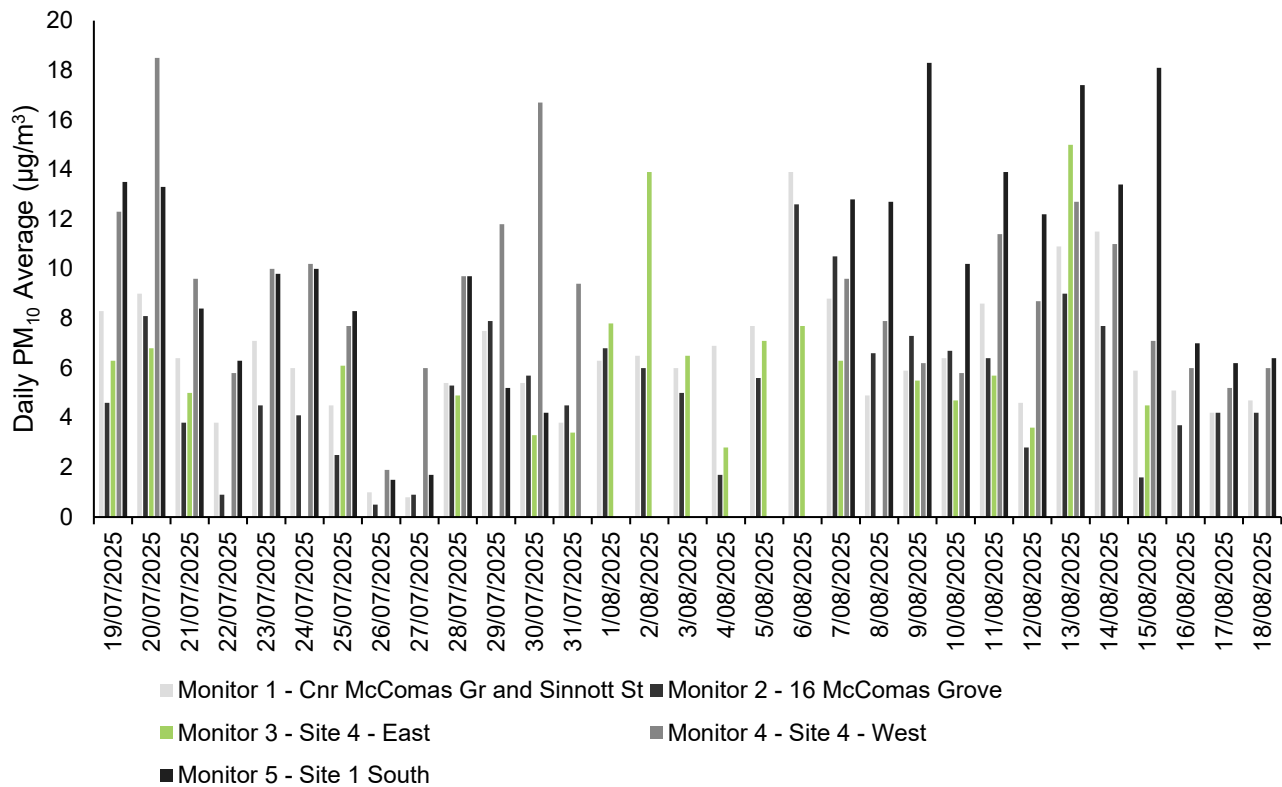


Figure 2: Burwood PM<sub>10</sub> daily averages.

### 3.2.1. Analysis

The maximum daily average PM<sub>10</sub> concentrations reported at the Burwood monitoring stations were 13.9 µg/m<sup>3</sup> (n = 31) at the corner of McComas Grove and Sinnott Street (Monitor 1), 12.6 µg/m<sup>3</sup> (n = 31) at 16 McComas Grove (Monitor 2), 15 µg/m<sup>3</sup> (n = 20) at Site 4 – East (Monitor 3), 18.5 µg/m<sup>3</sup> (n = 25) at Site 4 – West (Monitor 4), and 18.3 µg/m<sup>3</sup> (n = 24) at Site 1 South (Monitor 5).

The TARP was not implemented during the reporting period. Proactive measures were implemented during this period to manage dust on site. This included routine water cart and hose use on exposed soil, maintaining stockpiles below hoarding heights and covering truck loads prior to exiting the site. Regular site inspections were undertaken during this period to ensure these measures were regularly implemented.

### 3.3. Glen Waverley



Figure 3: Glen Waverley air quality monitoring stations.

Table 5: Glen Waverley PM<sub>10</sub> results.

Monitor Number	Monitoring Location	Max Daily PM <sub>10</sub> Concentration (µg/m <sup>3</sup> )	Median Daily PM <sub>10</sub> Concentration (µg/m <sup>3</sup> )	Days TARP Triggered in the Month	Days TARP Implemented in the Month
-	Representative Background - Alphington	22.5	14.9	-	-
1	Monitor 1 - Site 1 North	18.2	8.5	0	0

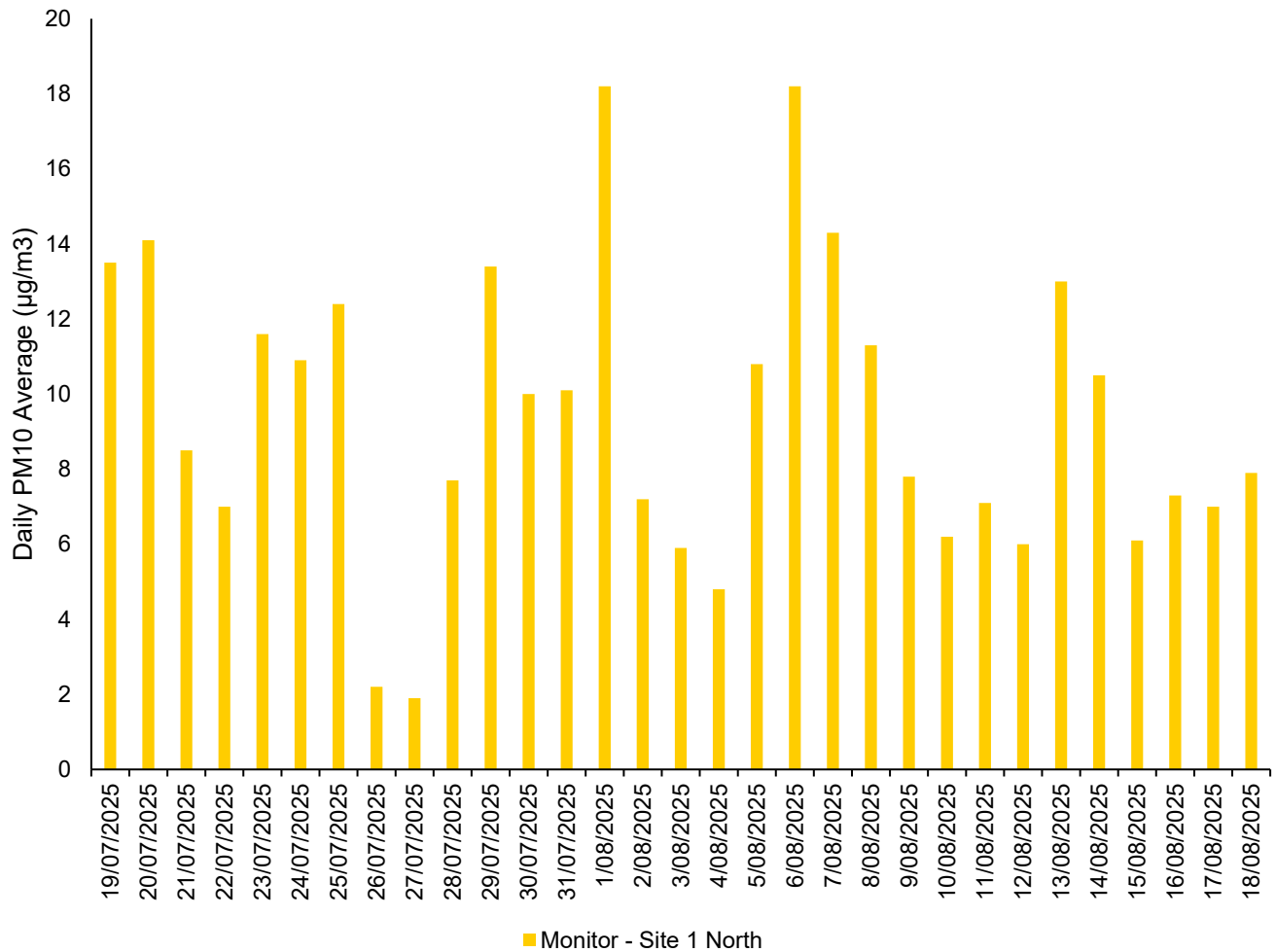


Figure 4: Glen Waverley PM<sub>10</sub> daily averages.

### 3.3.1. Analysis

The maximum daily average PM<sub>10</sub> concentration was 18.5 µg/m<sup>3</sup> (n = 31) at Site 1 North Location.

The TARP was not implemented during the reporting period. Throughout the month, frequent water cart and hose use was implemented to dampen exposed soil, and stockpiles were stored in an area enclosed by hoarding which acts as a wind barrier to minimise wind carrying dust. Regular site inspections were maintained during this period to ensure these measures were effective and implemented.

Monitor 2 at Railway Parade was decommissioned on 19 July 2025 as dust generating works were completed in the area.

### 3.4. Monash

No Early Works took place at Monash during the reporting period, therefore no monitoring was required.

### 3.5. Clayton

No Early Works took place at Clayton during the reporting period, therefore no monitoring was required.

## 3.6. Heatherton

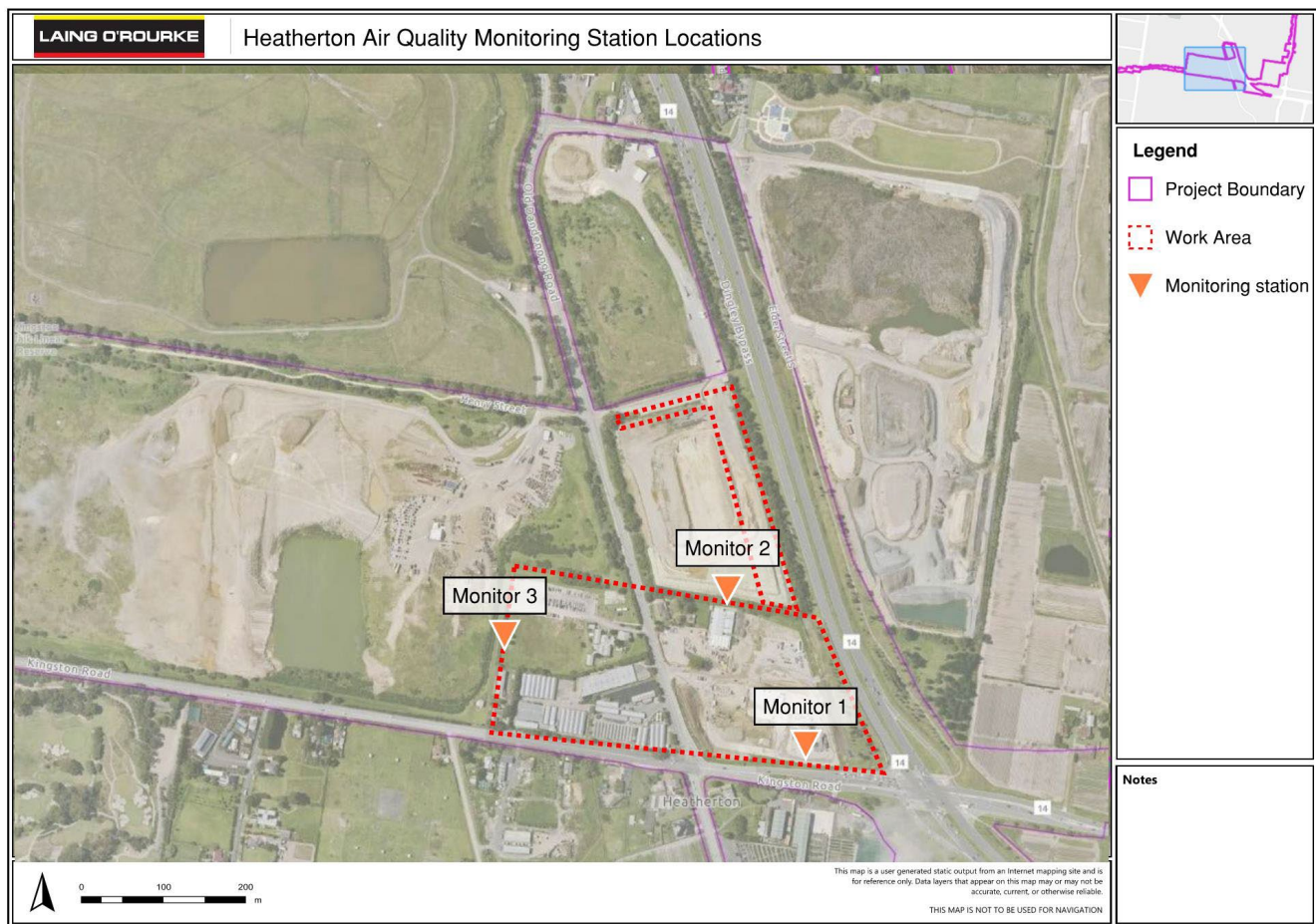


Figure 5: Heatherton air quality monitoring stations.

Table 6: Heatherton PM<sub>10</sub> results.

Monitor Number	Monitoring Location	Max Daily PM <sub>10</sub> Concentration (µg/m <sup>3</sup> )	Median Daily PM <sub>10</sub> Concentration (µg/m <sup>3</sup> )	Days TARP Triggered in the Month	Days TARP Implemented in the Month
-	Representative Background - Dandenong	24.6	13.6	-	-
1	SSY - South	25.6	13.2		
2	Site Office	18.0	8.5	0	0
3	SS17	25.9	10.8		



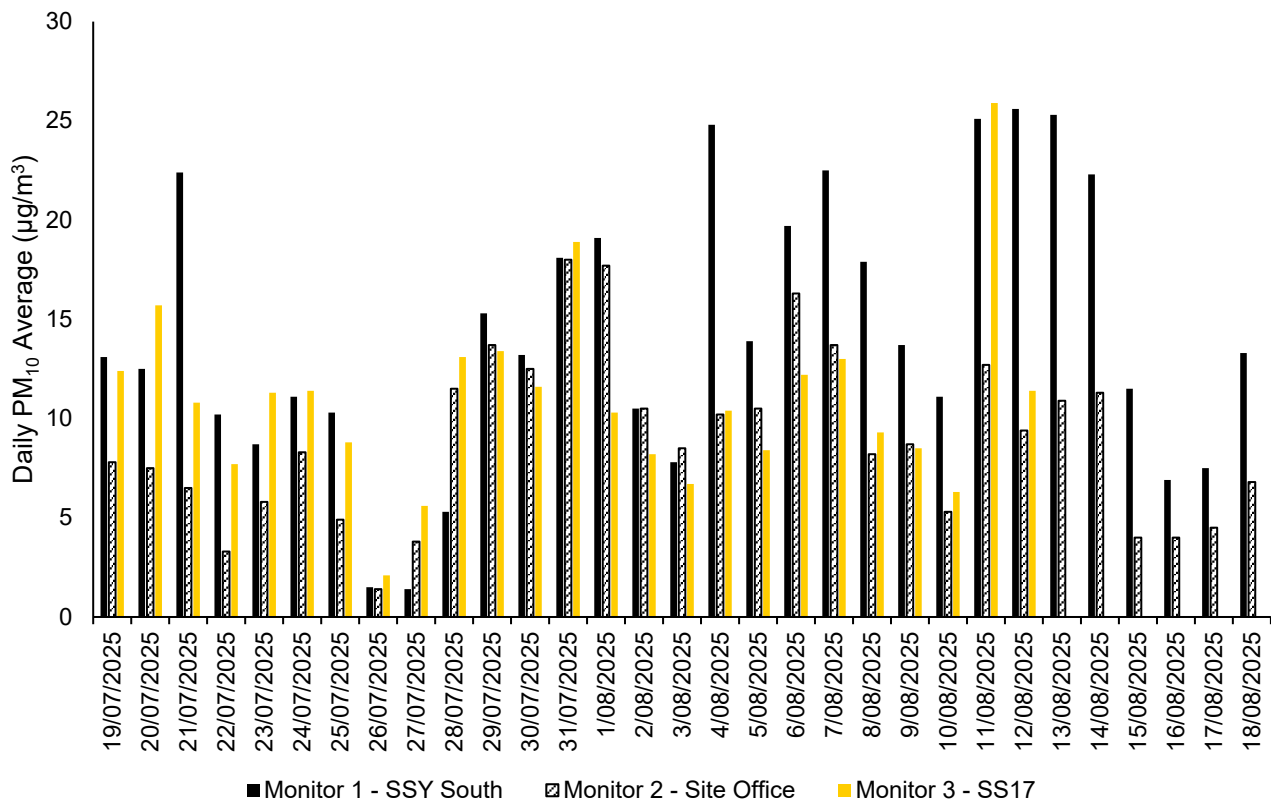


Figure 6: Heatherton PM<sub>10</sub> daily averages.

### 3.6.1. Analysis

This report does not include monitoring related to asbestos removal, which is monitored and reported separately. Monitoring for asbestos particles in the air has consistently found levels are within a safe and allowable range.

Throughout this reporting period there were a range of works being undertaken at the site, some of which are not subject to the reporting requirements of this document. Works being undertaken by Suburban Connect are not captured within this report, these included earthworks associated with the Western Portal Tunnel Access Structure (TAS) and the safe removal of hazardous materials.

The maximum daily average PM<sub>10</sub> concentrations were 25.5 µg/m<sup>3</sup> (n =31), 18.0 µg/m<sup>3</sup> (n = 31), and 25.9 µg/m<sup>3</sup> (n = 25) at SSY South (Monitor 1), Site Office (Monitor 2), and SS17 (Monitor 3) respectively. SS17 monitoring was interrupted due to issues with the device which required the replacement of the device. The TARP was not implemented during the reporting period. Proactive controls were implemented such as water cart operation, soil binders on disused stockpiles and covering truck loads.

## 3.7. Cheltenham

No Early Works took place at Cheltenham during the reporting period, therefore no monitoring was required.

## 4. Meteorological Conditions

Table 7: Daily weather observations for Melbourne (Olympic Park), Victoria 19 July 2025 – 18 August 2025. Data Source BOM.

Statistic	Min Temperature (°C)	Max Temperature (°C)	Maximum Wind Gust Direction	Maximum Wind Gust Speed (km/h)	Relative Humidity @ 9:00 AM (%)
Mean	6.4	15.3	-	32.5	79.8
Lowest	3.2	12.7	NNE / S	15	60
Highest	10.7	19.8	N	54	100

Table 8: Daily weather observations for Melbourne (Moorabbin), Victoria 19 July 2025 – 18 August 2025. Data Source BOM.

Statistic	Min Temperature (°C)	Max Temperature (°C)	Maximum Wind Gust Direction	Maximum Wind Gust Speed (km/h)	Relative Humidity @ 9:00 AM (%)
Mean	5.2	15.2	-	38.6	78.0
Lowest	0.5	12.1	SSW / W	15.0	50.0
Highest	10.1	18.9	N	76.0	96.0

Table 9: Daily rain data for Melbourne (Olympic Park and Moorabbin), Victoria 19 July 2025 – 18 August 2025. Data Source BOM.

Statistic	Rain data Olympic Park (mm)	Rain data Moorabbin (mm)
Daily Low	0	0.0
Daily High	10.2	9.4
Total	31.40	31.8

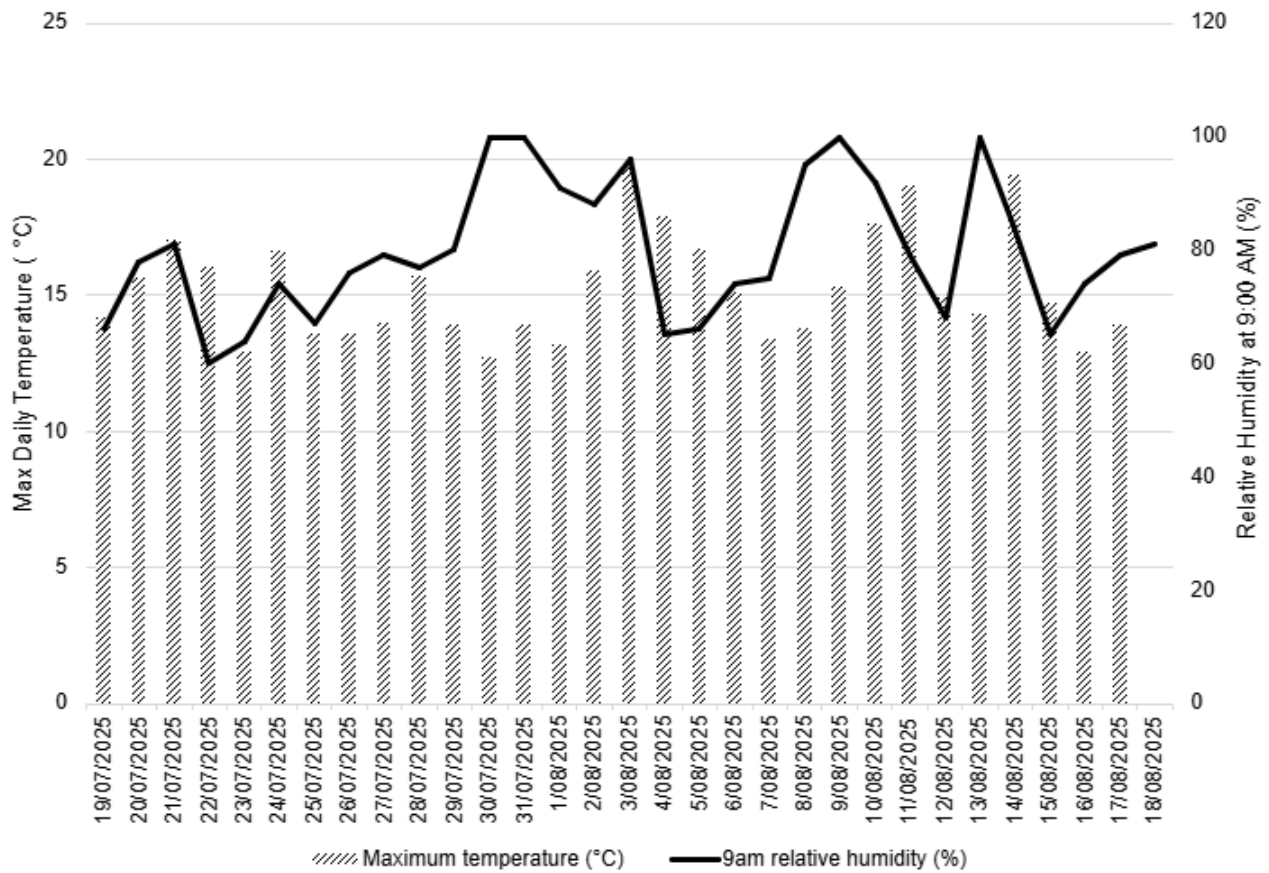


Figure 7: Daily relative humidity and temperature observations for Melbourne (Olympic Park), Victoria 19 July 2025 – 18 August 2025. Data Source BOM.

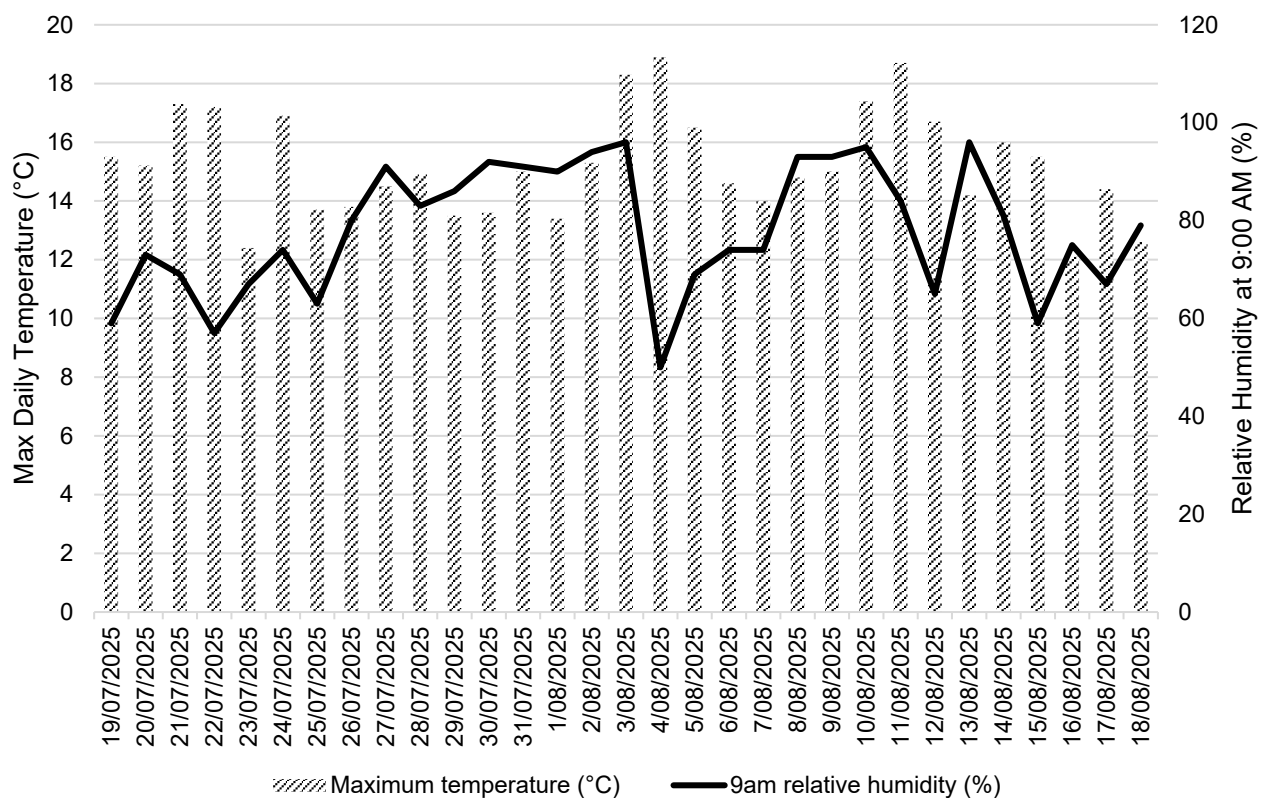


Figure 8: Daily relative humidity and temperature observations for Melbourne (Moorabbin), Victoria 19 July 2025 – 18 August 2025. Data Source BOM.

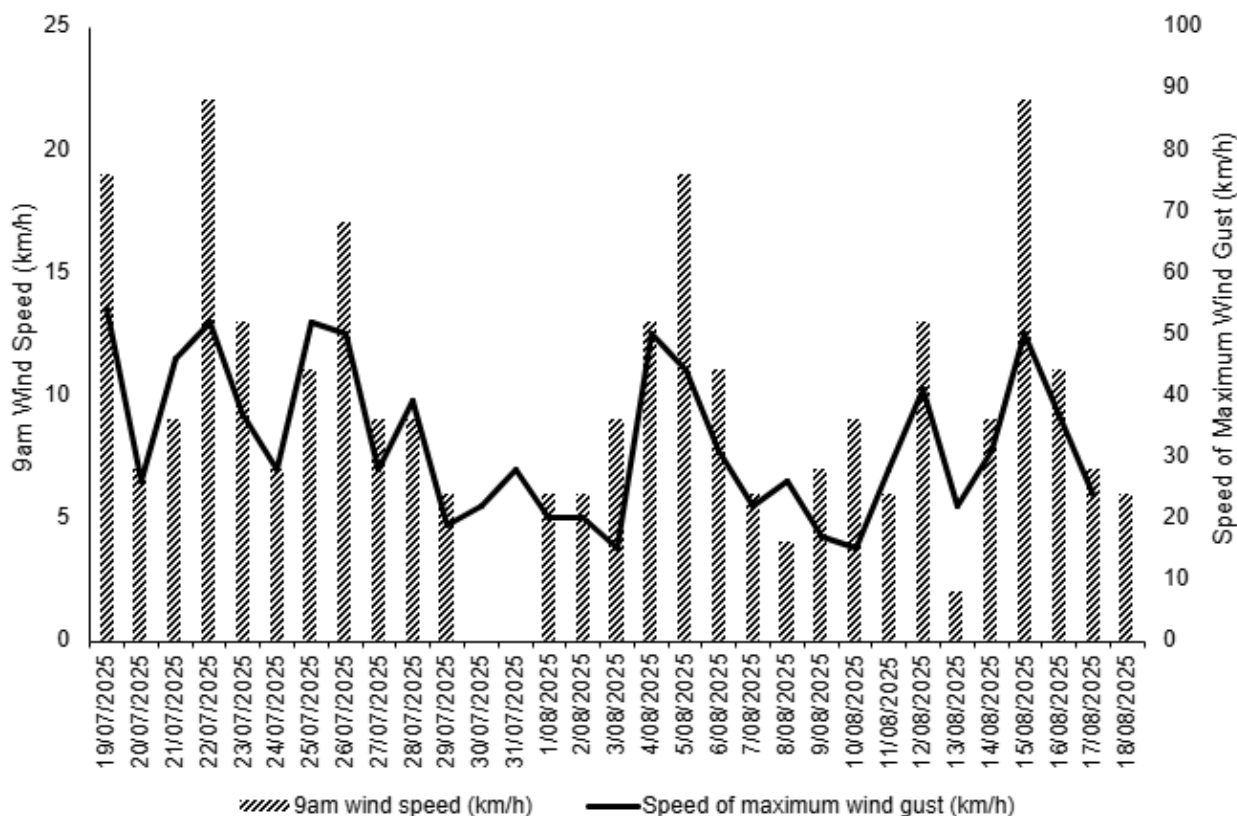


Figure 9: Daily wind speed observations for Melbourne (Olympic Park), Victoria 19 July 2025 – 18 August 2025. Data Source BOM.

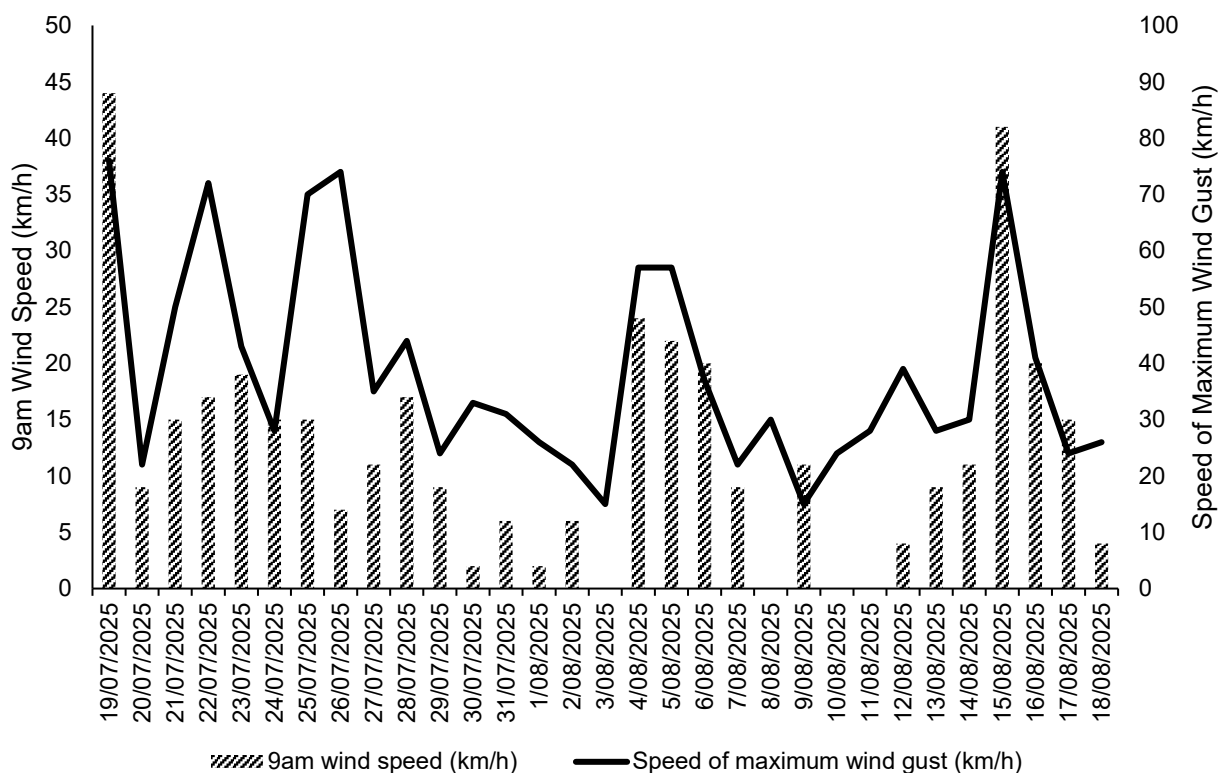


Figure 10: Daily wind speed observations for Melbourne (Moorabbin), Victoria 19 July 2025 – 18 August 2025. Data Source BOM.

## 5. Quality Assurance

### 5.1. Data Capture

Data capture is defined as the number of valid data periods collected divided by the number of available data periods. Valid data excludes period where the instrument is unavailable due to calibration and maintenance and excludes periods where the data has been rejected due to quality assurance/data validation procedures.

- Data capture statistics for the reporting period 19 July 2025 to 18 August 2025 are shown in Table 10.

Data capture statistics were 100% for all parameters at all stations for the reporting period, except for the following:

- At Box Hill all monitors have been decommissioned.
- At Burwood, the gaps in reporting at Monitor 3 between 22 July to 24 July 2025, on 26, 27 and 29 July 2025, on 8 August 2025, and between 15 August to 17 August 2025 can initially be attributed to battery issues. This was rectified on 24 July 2025. The continued intermittent monitoring can be attributed to overcast weather, which limited the solar panel's ability to adequately power the device. The gaps in reporting at Monitor 4 between 1 August to 6 August 2025 can be attributed to battery issues. This has been rectified. The gaps in reporting at Monitor 5 between 31 July to 6 August 2025 was due to device issues. A new device was ordered in replacement.
- At Monash, all monitors have been decommissioned.
- At Clayton, all monitors have been decommissioned.
- At Heatherton, the gap in data of Monitor 3 was due to a device fault which required the device to be replaced. A new device was ordered and was subsequently installed once on site.
- At Cheltenham all monitors have been decommissioned.
- The construction program has been reviewed to ensure monitoring devices are installed prior to works. The MC is continuing to closely monitor the operation of the SiteHive units.

Table 10: Air quality monitoring, data capture summary

Location	Parameter	Averaging Period	Collected Periods	Available Periods	Data Capture
Burwood – Corner of McComas Grove and Sinnott Street	PM <sub>10</sub>	24-hours	31	31	100%
Burwood – 16 McComas Grove	PM <sub>10</sub>	24-hours	31	31	100%
Burwood – Site 4 - West	PM <sub>10</sub>	24-hours	20	31	65%
Burwood – Site 4 - East	PM <sub>10</sub>	24-hours	25	31	80%
Burwood – Site 1 - South	PM <sub>10</sub>	24-hours	24	31	77%
Glen Waverley – Site 1 North	PM <sub>10</sub>	24-hours	31	31	100%
Heatherton – SSY – South	PM <sub>10</sub>	24-hours	31	31	100%
Heatherton – SSY – Site Office	PM <sub>10</sub>	24-hours	31	31	100%
Heatherton – SSY - SS17	PM <sub>10</sub>	24-hours	25	31	81%



## 5.2. Data Validation

Data contained in this report has been validated against performance and calibration requirements for each instrument.

Table 11: Monitoring device calibration information.

Location	Device Serial Number	Calibration Date	Calibration Due
Burwood – 16 McComas Grove	HEX-000162	22 August 2024	22 August 2026
Burwood – Corner of McComas Grove and Sinnott Street	HEX-000300	11 June 2025	11 June 2027
Burwood – Site 4 - West	HEX-000489	6 Dec 2023	06 Dec 2025
Burwood – Site 4 – East	HEX-000541	24 Apr 2024	24 Apr 2026
Burwood – Site 1 South	HEX-000138	5 Mar 2025	5 Mar 2027
Glen Waverley – Site 1 North	HEX-000277	5 Feb 2025	5 Feb 2027
Heatherton – SSY – South	HEX-000317	13 Dec 2023	13 Dec 2025
Heatherton – SSY – Site Office	HEX-000317	13 Dec 2023	13 Dec 2025
Heatherton – SSY - SS17	HEX-000499	5 March 2025	5 March 2027

# **Suburban Rail Loop East Tunnels South Air Quality Monthly Report**

**19 July 2025 to 18 August 2025**

## Document Information

Document Details	
Document Number	SRL-WPC-SCC-SPKW-REP-XEV-PWD-000013
Revision Date	5-Sep-2025
Revision Number	C

## Revision Control

Revision Number	Change Detail	Date	Comment
A	Draft issued to SRLA	22/08/2025	Issued For Review
B	Draft issued to SRLA	28/08/2025	Issued For Review
C	Final Issued to SRLA	05/09/2025	Final Revision

# Contents

<b>Executive Summary</b>	<b>4</b>
<b>1 Introduction</b>	<b>8</b>
1.1 SRL East	8
1.2 Environmental Management Framework	8
<b>2 Air Quality Monitoring</b>	<b>9</b>
2.1 Context	9
2.2 Purpose	9
2.3 Monitoring Locations	10
2.4 Data Limitations and Verification	11
<b>3 Results</b>	<b>12</b>
3.1 Train Stabling Facility West	12
3.1.1 Analysis	13
3.2 Clarinda TBM launch site	14
3.2.1 Analysis	15
3.3 Clayton	16
3.3.1 Analysis	18
3.4 Monash	19
3.4.1 Analysis	21
3.5 Meteorological Conditions	22
<b>4 Quality Assurance</b>	<b>23</b>
4.1 Data Capture	23
4.2 Data Validation	24
<b>Glossary</b>	<b>26</b>

# Tables

Table 1: Summary of air quality monitoring results	6
Table 2: Ambient air quality objectives for PM <sub>10</sub>	9
Table 3: Suburban Connect air quality monitoring locations active during reporting period	10
Table 4: Train Stabling Facility (TSF) West Site PM <sub>10</sub> Results	12
Table 5: Clarinda CC01 PM <sub>10</sub> Results	14
Table 6: Clarinda TBM launch site PM <sub>10</sub> Results	14
Table 7: Clayton Site PM <sub>10</sub> Results	16
Table 8: Daily weather observations for Moorabbin, Victoria	22
Table 9: Daily rain data for Moorabbin, Victoria	22
Table 10: Daily PM <sub>10</sub> Air Quality Monitoring Data Capture	23
Table 11: Monitoring device calibration information	24

# Figures

Figure 1: Train Stabling Facility West site air quality monitoring station .....	12
Figure 2: Daily Averages PM <sub>10</sub> Results at Train Stabling Facility West .....	13
Figure 3: Clarinda CC01 air quality monitoring station .....	14
Figure 4: Daily Averages PM <sub>10</sub> Results at Clarinda CC01 .....	15
Figure 5: Clarinda TBM launch site air quality monitoring station .....	14
Figure 6: Daily Averages PM <sub>10</sub> Results at Clarinda Tunnel Access Structure Site .....	15
Figure 7: Clayton Site air quality monitoring station .....	16
Figure 8: Daily Averages PM <sub>10</sub> Results at Clayton .....	18
Figure 9: Daily relative humidity and temperature observations for Moorabbin, Victoria .....	22
Figure 10: Daily wind speed observations for Moorabbin, Victoria .....	23

## Executive Summary

### Key Outcomes

Key outcomes arising from the monthly air quality monitoring program:

- Works took place at:
  - Train Stabling Facility West
  - Clarinda tunnel boring machine (TBM) launch site
  - Clayton
  - Monash
- Visual air inspections were undertaken proactively to monitor and confirm there were no dust impacts due to works on site.
- All instances of elevated monitoring results were investigated and confirmed existing mitigation measures were sufficient to manage dust risks onsite.
- Air Quality monitoring results included elevated PM<sub>10</sub> levels at Clarinda which triggered the TARP. Investigations determined the elevated levels were due to an external source and confirmed that dust management measures were active and sufficient for the activities on site. No further TARP actions were implemented.

### Purpose of the Report

This report presents the results of the monthly review of the air quality monitoring data for each Suburban Rail Loop (SRL) East main works construction site for the period between 19 July 2025 to 18 August 2025 in accordance with SRL East Environmental Management Framework (EMF) and Environmental Performance Requirements (EPRs) AQ1 and AQ2.

Suburban Connect is implementing an air quality monitoring program on each site that includes both visual observation and instrumental air quality monitoring. The purpose of the air quality monitors is to measure the

concentration of small dust particles in the air near the construction site. These particles, known as PM<sub>10</sub> have the potential to impact human health. PM<sub>10</sub> refers to particles with an aerodynamic diameter of 10 µm or less.

This report compares the measured concentrations to air quality objectives that are defined in the Environment Reference Standard (ERS) which is a tool under the Environment Protection Act 2017. The ERS sets out the air quality objectives for PM<sub>10</sub> which are measured over a 24-hour averaging period. The objectives are risk-based concentrations that are not intended to be compliance levels, but they assist Suburban Connect understand the risk to human health. When the instrumental monitor and/or visual observations identify a change in site conditions this prompts Suburban Connect to take actions on site to reduce dust impacts, and review mitigation measures applied.

## Scope of Reporting

Construction works requiring air quality monitoring occurred at the following site/s during this reporting period:

- Train Stabling Facility West
- Clarinda TBM launch site
- Clayton
- Monash

There were no construction works requiring air quality monitoring at the following site/s during this reporting period:

- Cheltenham
- Train Stabling Facility East
- Glen Waverley
- Clarinda – CC01

This report does not include:

- Works delivered as SRL Initial Works. The SRL Initial Works, which include investigative works are not subject to the EMF and EPRs.
- Monitoring related to asbestos containing material removal works, which is monitored and reported separately.



## Results

The key findings are summarised in Table 1. An analysis of these findings is provided in Section 3.

**Table 1: Summary of air quality monitoring results**

Location	Parameter	Averaging Period	Max Concentration (µg/m³)	Median Concentration (µg/m³)	Days TARP Triggered in the Month	Days TARP Actions Implemented in the Month
<b>Representative Background Locations</b>						
Dandenong	PM <sub>10</sub>	24-hour	24.6	13.6	-	-
<b>Train Stabling Facility West</b>						
North	PM <sub>10</sub>	24-hour	17.6	9.7	0	0
South	PM <sub>10</sub>	24-hour	23.4	9.2	0	0
Linear Reserve North	PM <sub>10</sub>	24-hour	29.3	17.1	0	0
Linear Reserve South	PM <sub>10</sub>	24-hour	13.4	7.4	0	0
<b>Clarinda TBM launch site</b>						
South Boundary	PM <sub>10</sub>	24-Hour	79.6	32.5	8	0
East	PM <sub>10</sub>	24-hour	78.1	26.1	5	0
North	PM <sub>10</sub>	24-hour	11.7	0.6	0	0
North West	PM <sub>10</sub>	24-hour	2.4	0.5	0	0
<b>Clayton</b>						

Location	Parameter	Averaging Period	Max Concentration (µg/m <sup>3</sup> )	Median Concentration (µg/m <sup>3</sup> )	Days TARP Triggered in the Month	Days TARP Actions Implemented in the Month
Central	PM <sub>10</sub>	24-hour	13.7	6.1	0	0
Northwest	PM <sub>10</sub>	24-hour	18.0	9.3	0	0
South	PM <sub>10</sub>	24-hour	36.6	14.7	0	0
East (Church)	PM <sub>10</sub>	24-hour	23.0	9.7	0	0
<b>Monash</b>						
Compound	PM <sub>10</sub>	24-hour	20.2	11.3	0	0
SW Demo Boundary	PM <sub>10</sub>	24-hour	21.9	10.0	0	0
Coil Steels - Howleys	PM <sub>10</sub>	24-hour	26.7	11.9	0	0

# 1 Introduction

## 1.1 SRL East

Suburban Rail Loop (SRL) will deliver a 90km rail line linking every major train service from the Frankston Line to the Werribee Line via Melbourne Airport and transforming our public transport network.

SRL East from Cheltenham to Box Hill is now in major construction. The new rail line will connect major employment, health, education and retail destinations in Melbourne's east and south east, slashing travel times, reducing congestion and connecting passengers travelling on the Gippsland corridor to destinations across Melbourne.

The SRL East – Tunnels South scope of works include:

- Initial launch of four TBMs from the Clarinda TBM launch site
- Construction of approximately 16km of twin tunnels between Cheltenham and Glen Waverley
- Construction of 55 cross passages between the tunnels (surface-based ground improvement at eight locations with the remainder to be frozen from within the main tunnels)
- Construction of the western and eastern decline structures at the train stabling facility
- Protection of the South Eastern Trunk Sewer (SETS)
- Box excavations at Clayton and Monash station locations
- Interface works with the Melbourne Metro Rail Network

This report does not include works delivered as SRL Initial Works. The SRL Initial Works, which includes investigative works, were subject to a separate approval process under Clause 52.30 of the Victoria Planning Provisions (VPP) and were approved by the Minister for Planning on 19 December 2021. These works are required to comply with Clause 52.30 of the VPP and are not subject to the EMF and EPRs.

## 1.2 Environmental Management Framework

The EMF for SRL East provides a transparent and integrated framework to manage environmental effects of the Project and includes EPRs that define environmental outcomes that must be achieved during the design, construction, and operation phases of the Project. The EMF is available on the SRL east website at <https://bigbuild.vic.gov.au/library/suburban-rail-loop/planning/srl-east-environmental-management-framework>.

The development of the EMF has been informed by relevant legislation, policy and guidelines, and the specialist impact assessment studies completed for the SRL East Environment Effects Statement (EES) and the Minister's Assessment, dated 5 August 2022.

The EMF requires the Principal Contractor (PC) to develop and implement an Environmental Air Quality and Dust Management Plan (EAQDMP). As part of implementing this document plan, the PC is required to conduct monitoring of PM<sub>10</sub> concentrations and measure wind speed and direction at each Early Works construction site and at a representative control site. The EAQDMP also includes a Trigger Action Response Protocol (TARP) which defines a set of triggers that prompt actions on site to reduce dust impacts, and review mitigation measures applied.

The PC regularly reviews the monitoring data at each site, for the purpose of assessing the effectiveness of EAQDMP implementation. The verified results of the PM<sub>10</sub> monitoring for the applicable monthly period are contained in this report, which will be available to the public, in accordance with the requirements of the EMF.

## 2 Air Quality Monitoring

### 2.1 Context

Maintaining air quality is important for public health, the liveability of our cities and our environment. Overall air quality conditions in Melbourne are good, however like all major cities, there are days where the background concentrations of air pollutants are very high on a regional basis. Sometimes these elevated concentrations are due to regional influences such as windblown continental dust, bushfires or hazard reduction burns. Emissions from traffic, home heating, and industrial emissions across Melbourne can also cause high background concentrations, especially when the weather is calm. Environment Protection Authority (EPA) monitoring stations measure these background levels of pollution that already exist in the air within the surrounding area. The EPA monitoring station at Dandenong is used as the representative control site for Suburban Connect work sites.

Without effective management, construction of the Project has the potential to contribute to these background concentrations which may impact public health. Comparison of SRL East monitoring results with publicly available EPA monitoring data is used by the PC to identify when construction-related activities are impacting local air quality, and conversely when the local air quality results may be influenced by background conditions outside of the influence of the construction site.

Meteorological conditions, such as wind direction and speed, can impact on the dispersion of particulates in the air and by monitoring these, the PC can respond when conditions on site change. Having records of wind conditions is also helpful for retrospectively identifying the activity that is causing any elevated dust concentrations.

### 2.2 Purpose

The purpose of the air quality monitors is to measure the concentration of small dust particles in the air near the construction site. These particles, known as PM<sub>10</sub> have the potential to impact human health. PM<sub>10</sub> refers to particles with an aerodynamic diameter of 10 µm or less.

The measured concentrations are compared to air quality objectives that are defined in the Environment Reference Standard (ERS) which is a tool under the Environment Protection Act 2017. The air quality objectives defined in the ERS informed the objectives for air quality for the Project, noting that the ambient air ERS is not a compliance standard that one can pollute up to. The ERS does not provide an indicator or objective for nuisance dust.

The objectives are risk-based concentrations that are not intended to be compliance levels, but they assist the PC to understand the risk to human health. The ERS sets out the air quality objectives for PM<sub>10</sub> which are measured over a 24-hour averaging period, as reproduced below in Table 2.

**Table 2: Ambient air quality objectives for PM<sub>10</sub>**

Indicator	Air Quality Objective (µg/m <sup>3</sup> )	Averaging Period
Indicator Particles as PM <sub>10</sub> (maximum concentration)	50	24-hour

The measured concentrations (which include both existing background concentrations and the Project's incremental contribution over a 24-hour period) are presented in Section 3 and compared against the air quality objective. Monitoring is continuous, even when there are no construction-related activities occurring on the site. Periods of time where there are no site activities are classified as 'out of hours'. The potential for dust

generation from the work sites is much lower when there are no site activities occurring, however dust can still be generated at the work site during 'out of hours' periods due to wind erosion.

## 2.3 Monitoring Locations

Air quality monitors are located on or adjacent to the construction sites, to represent local air quality conditions and measure the potential impact of works on local sensitive receivers including residents.

The air quality monitors were installed on the following dates at each of the following locations. The locations of these monitors are shown on maps in Section 3 of this report.

Latitude and longitude coordinates of monitoring equipment are sourced directly from the monitoring equipment management system and locations may differ between reporting periods due to variance in GPS readings.

**Table 3: Suburban Connect air quality monitoring locations for active works during reporting period**

Monitoring Location	Date Commissioned	Coordinates	Monitoring Parameters	Representative Control Site
<b>Train Stabling Facility West</b>				
North	7 May 2025	Latitude: -37.9517° Longitude: 145.0927°	PM <sub>10</sub>	Dandenong EPA monitoring station
South	8 May 2025	Latitude: -37.9549° Longitude: 145.0934°	PM <sub>10</sub>	Dandenong EPA monitoring station
Linear Reserve North	15 May 2025	Latitude: -37.9529° Longitude: 145.0884°	PM <sub>10</sub>	Dandenong EPA monitoring station
Linear Reserve South	15 May 2025	Latitude: -37.9539° Longitude: 145.0883°	PM <sub>10</sub>	Dandenong EPA monitoring station
<b>Clarinda TBM Launch Site</b>				
South Boundary	21 Feb 2025	Latitude: -37.9559° Longitude: 145.1094°	PM <sub>10</sub>	Dandenong EPA monitoring station
East Boundary	3 Dec 2024	Latitude: -37.9571° Longitude: 145.1108°	PM <sub>10</sub>	Dandenong EPA monitoring station
North Boundary	23 Jan 2025	Latitude: -37.9554° Longitude: 145.1089°	PM <sub>10</sub>	Dandenong EPA monitoring station
Northwest Boundary	23 Jan 2025	Latitude: -37.9549° Longitude: 145.1074°	PM <sub>10</sub>	Dandenong EPA monitoring station
<b>Clayton</b>				
Central	21 May 2025	Latitude: -37.9211° Longitude: 145.1198°	PM <sub>10</sub>	Dandenong EPA monitoring station
Northwest	3 Dec 2024	Latitude: -37.9216° Longitude: 145.1193°	PM <sub>10</sub>	Dandenong EPA monitoring station

Monitoring Location	Date Commissioned	Coordinates	Monitoring Parameters	Representative Control Site
South	5 Mar 2025	Latitude: -37.9237° Longitude: 145.1191°	PM <sub>10</sub>	Dandenong EPA monitoring station
East (Church)	4 Jun 2025	Latitude: -37.9221° Longitude: 145.1204°	PM <sub>10</sub>	Dandenong EPA monitoring station
<b>Monash</b>				
Compound	2 Jul 2025	Latitude: -37.9031° Longitude: 145.1383°	PM <sub>10</sub>	Dandenong EPA monitoring station
SW Demo Boundary	6 Aug 2025	Latitude: -37.9048° Longitude: 145.1377°	PM <sub>10</sub>	Dandenong EPA monitoring station
Coil Steels - Howleys	9 Jul 2025	Latitude: -37.9036° Longitude: 145.1381°	PM <sub>10</sub>	Dandenong EPA monitoring station

## 2.4 Data Limitations and Verification

The following limitations apply to this data:

- Meteorological conditions on site can affect measurements made by monitoring devices. For instance, dust measurements can be impacted by rainfall, fog and/or humidity (with water droplets in the air being mistaken as dust particles). Displaying periods of inclement weather allows reviewers to identify measurements that may have been impacted.
- Breaks in data availability may occur due to sensor outages, instrument errors, technical issues, or removal of sensors during non-working periods to ensure the security of the equipment.
- Proximity of site monitors to public roads, industrial businesses and other factors will impact data recording.
- Monitors may need to be located close to works due to security requirements.
- Monitor locations will change as works progress and construction activity locations change.

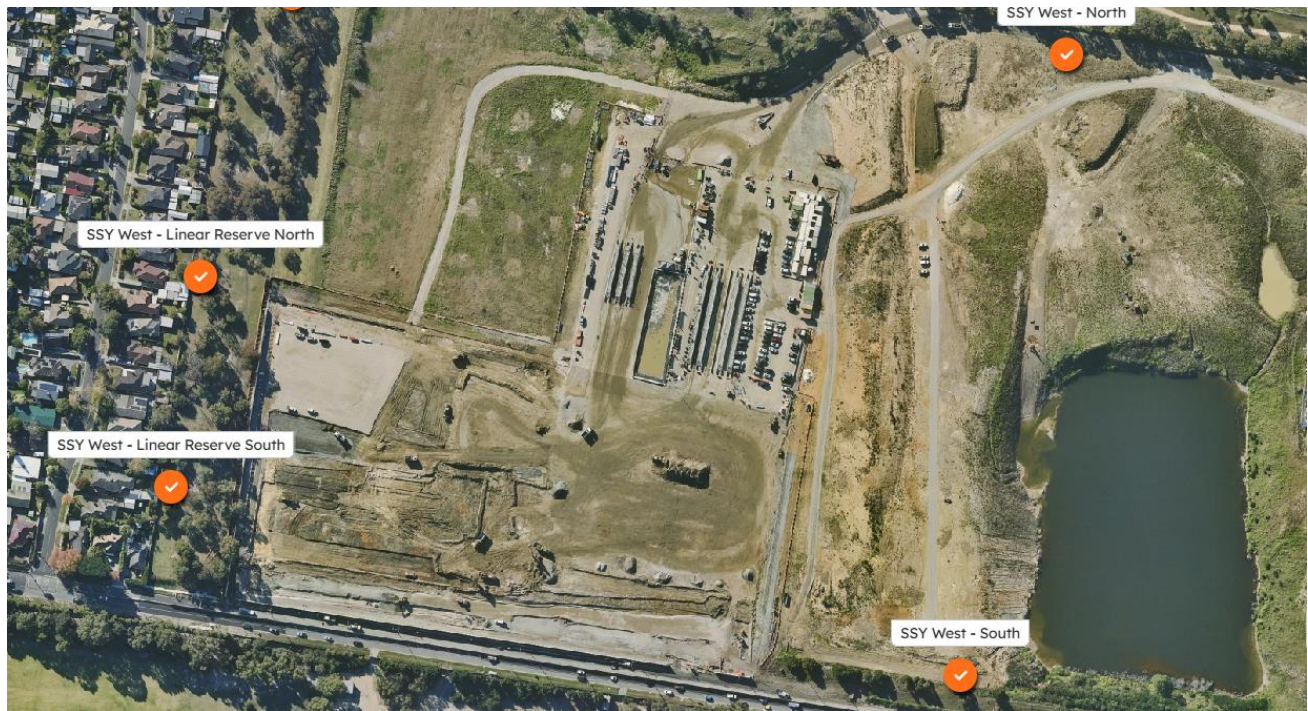
Data has been provided in tabular and graphical form in Section 3 to visually present 24-hour averages of PM<sub>10</sub> over the monthly period. The data included in this report has been verified by the Suburban Connect and relevant subject matter experts.



## 3 Results

Data has been presented in graphical form below to visually present 24-hour averages of PM<sub>10</sub> dust concentration over the monthly period for each active construction site.

### 3.1 Train Stabling Facility West

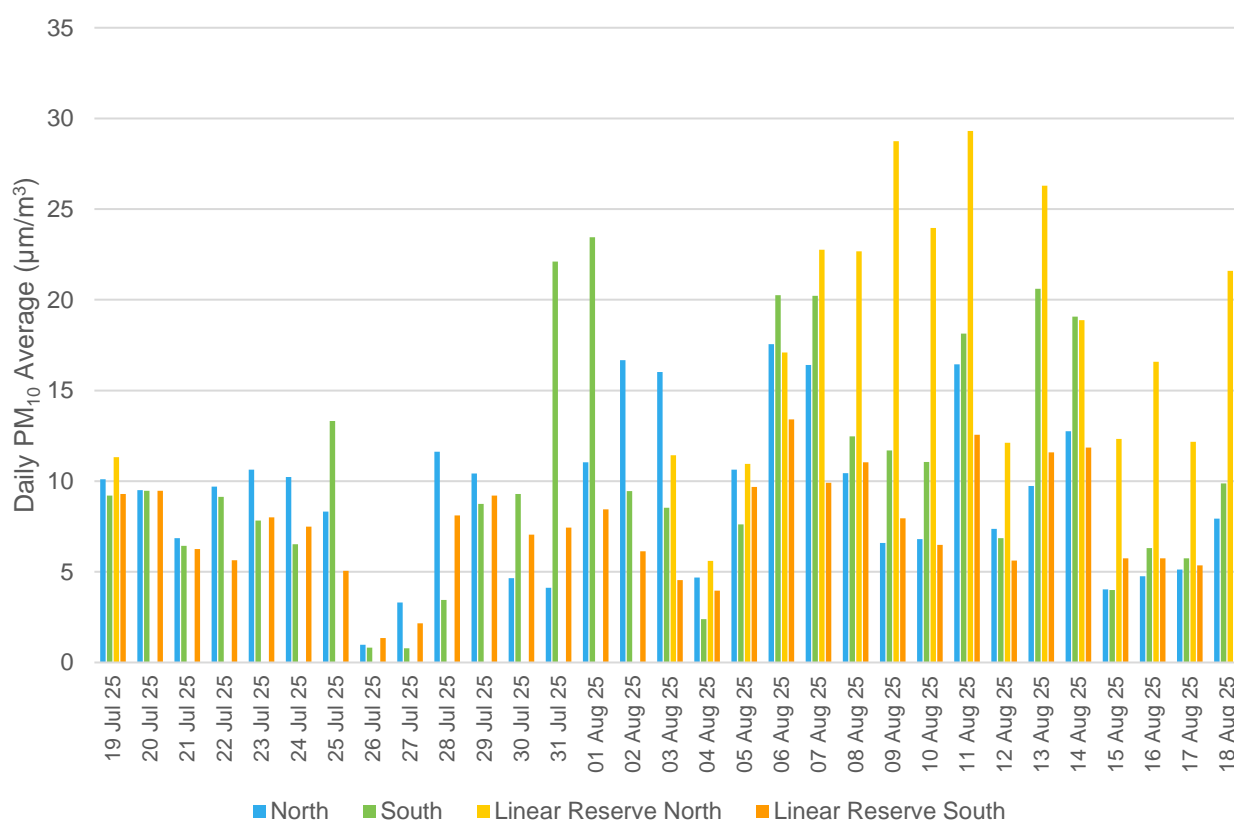


**Figure 1: Train Stabling Facility West site air quality monitoring stations**

**Table 4: Train Stabling Facility (TSF) West Site PM<sub>10</sub> Results**

Location	Parameter	Averaging Period	Max Concentration (µg/m <sup>3</sup> )	Median Concentration (µg/m <sup>3</sup> )	Days TARP Triggered in the Month	Days TARP Actions Implemented in the Month
<b>Representative Background Locations</b>						
Dandenong	PM <sub>10</sub>	24-hour	24.6	13.6	-	-
<b>Train Stabling Facility West</b>						
North	PM <sub>10</sub>	24-hour	17.6	9.7	0	0
South	PM <sub>10</sub>	24-hour	23.4	9.2	0	0

Location	Parameter	Averaging Period	Max Concentration ( $\mu\text{g}/\text{m}^3$ )	Median Concentration ( $\mu\text{g}/\text{m}^3$ )	Days TARP Triggered in the Month	Days TARP Actions Implemented in the Month
Linear Reserve North	PM <sub>10</sub>	24-hour	29.3	17.1	0	0
Linear Reserve South	PM <sub>10</sub>	24-hour	13.4	7.4	0	0



**Figure 2: Daily Averages PM<sub>10</sub> Results at Train Stabling Facility West**

### 3.1.1 Analysis

Measures implemented to proactively manage dust on this site include water carts, wheel wash and street sweepers. In addition, daily observations by supervisors and environmental representatives are performed to respond to areas of concern. Visual air inspections were also undertaken to proactively monitor and confirm there were no off-site dust impacts due to construction activities on site. There were no elevated PM<sub>10</sub> events during the reporting period.

The North and South monitoring locations were relocated further north and south respectively. The Linear Reserve North monitoring location remained online throughout the reporting period, however did not record data between 20 July 2025 to 2 August 2025, due to a firmware issue. The Linear Reserve South Monitor remained active and recorded all data throughout the reporting period.

## 3.2 Clarinda TBM launch site

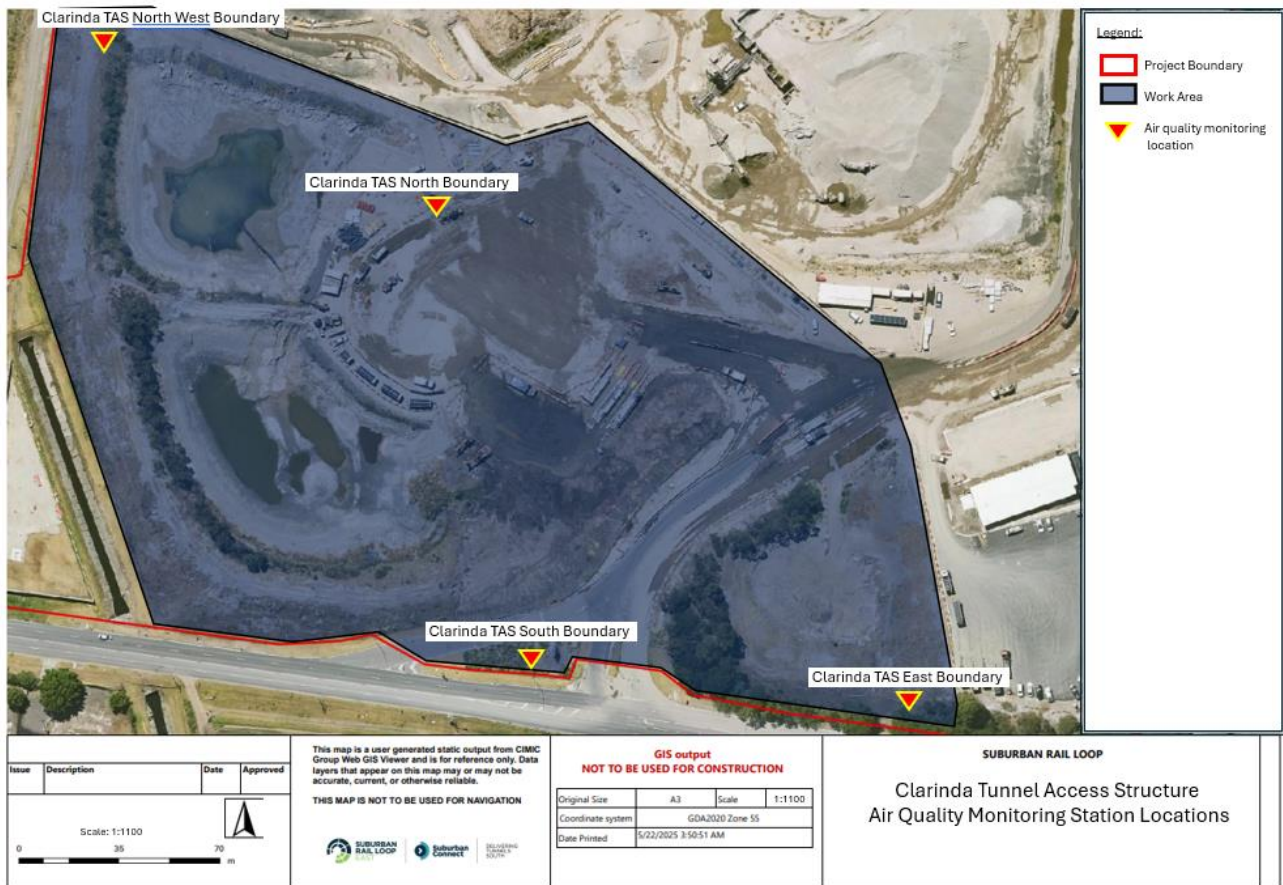
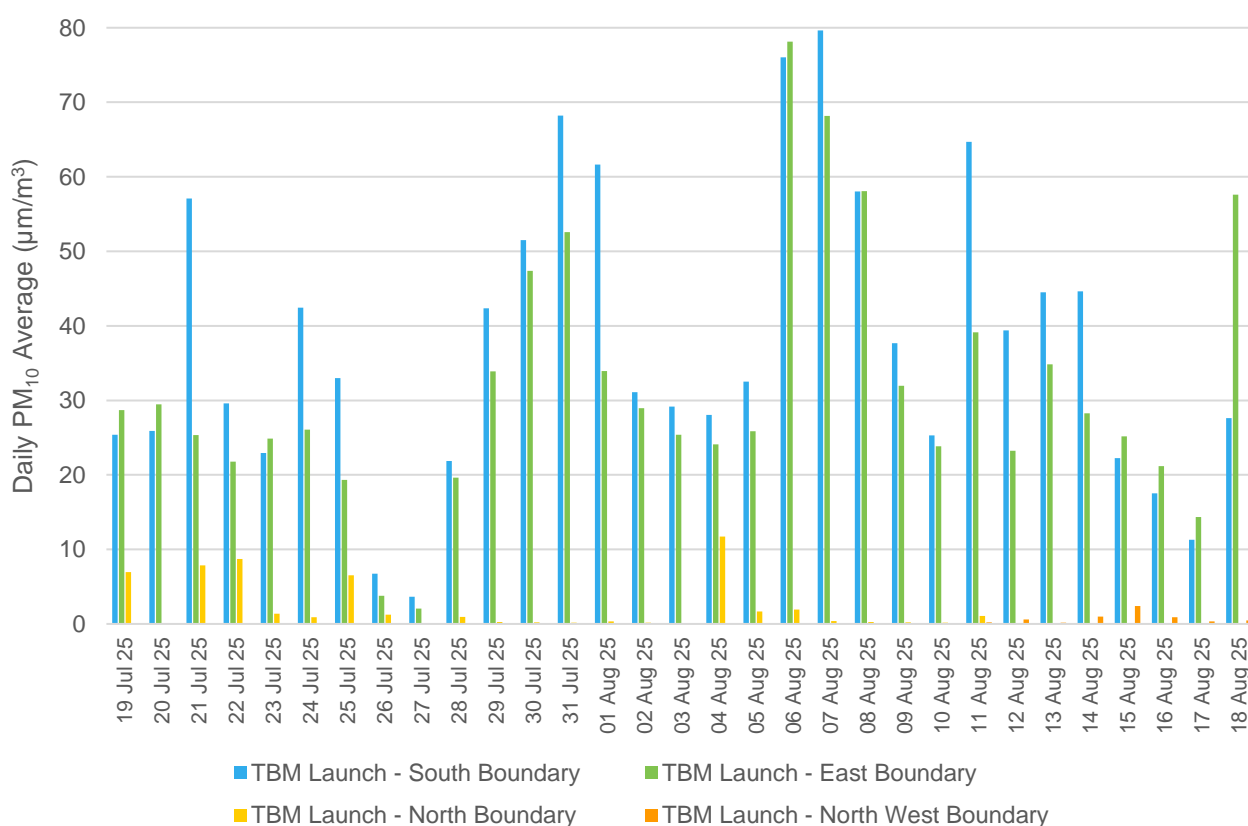


Figure 3: Clarinda TBM launch site air quality monitoring stations

Table 5: Clarinda TBM launch site PM<sub>10</sub> Results

Location	Parameter	Averaging Period	Max Concentration (µg/m³)	Median Concentration (µg/m³)	Days TARP Triggered in the Month	Days TARP Actions Implemented in the Month
Representative Background Locations						
Dandenong	PM <sub>10</sub>	24-hour	24.6	13.6	-	-
Clarinda TBM launch site						
South Boundary	PM <sub>10</sub>	24-Hour	79.6	32.5	8	0
East	PM <sub>10</sub>	24-hour	78.1	26.1	5	0

Location	Parameter	Averaging Period	Max Concentration ( $\mu\text{g}/\text{m}^3$ )	Median Concentration ( $\mu\text{g}/\text{m}^3$ )	Days TARP Triggered in the Month	Days TARP Actions Implemented in the Month
North	PM <sub>10</sub>	24-hour	11.7	0.6	0	0
North West	PM <sub>10</sub>	24-hour	2.4	0.5	0	0



**Figure 4: Daily Averages PM<sub>10</sub> Results at Clarinda Tunnel Access Structure Site**

### 3.2.1 Analysis

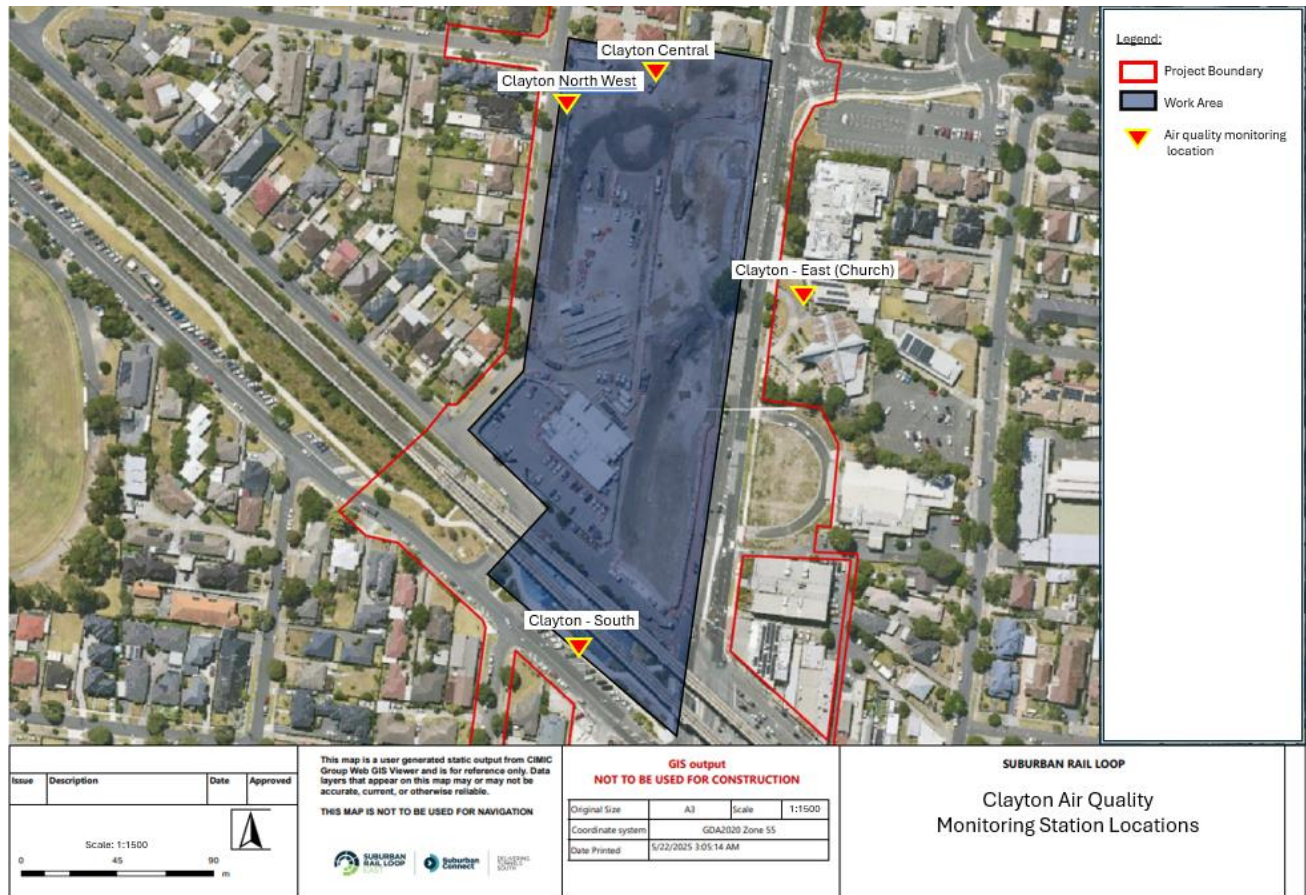
Measures implemented to proactively manage dust on this site include a boundary sprinkler system, water carts, rumble grids, and street sweepers. In addition, daily observations by supervisors and environmental representatives are performed to respond to areas of concern. Visual air inspections were also undertaken to proactively monitor and confirm there were no off-site dust impacts due to construction activities on site.

Eight elevated PM<sub>10</sub> levels occurred at the South Boundary monitor and five elevated PM<sub>10</sub> levels occurred at the East Boundary monitor during the reporting period. Investigations determined the elevated levels were due to an external source, site inspections observed no dust generation from site construction activities and no further TARP actions were implemented. Dust management measures were confirmed to be active and sufficient for the activities on site.



The monitor located at the North Boundary location was relocated on the 11 August 2025 to the North West Boundary location due to site reconfiguration.

### 3.3 Clayton

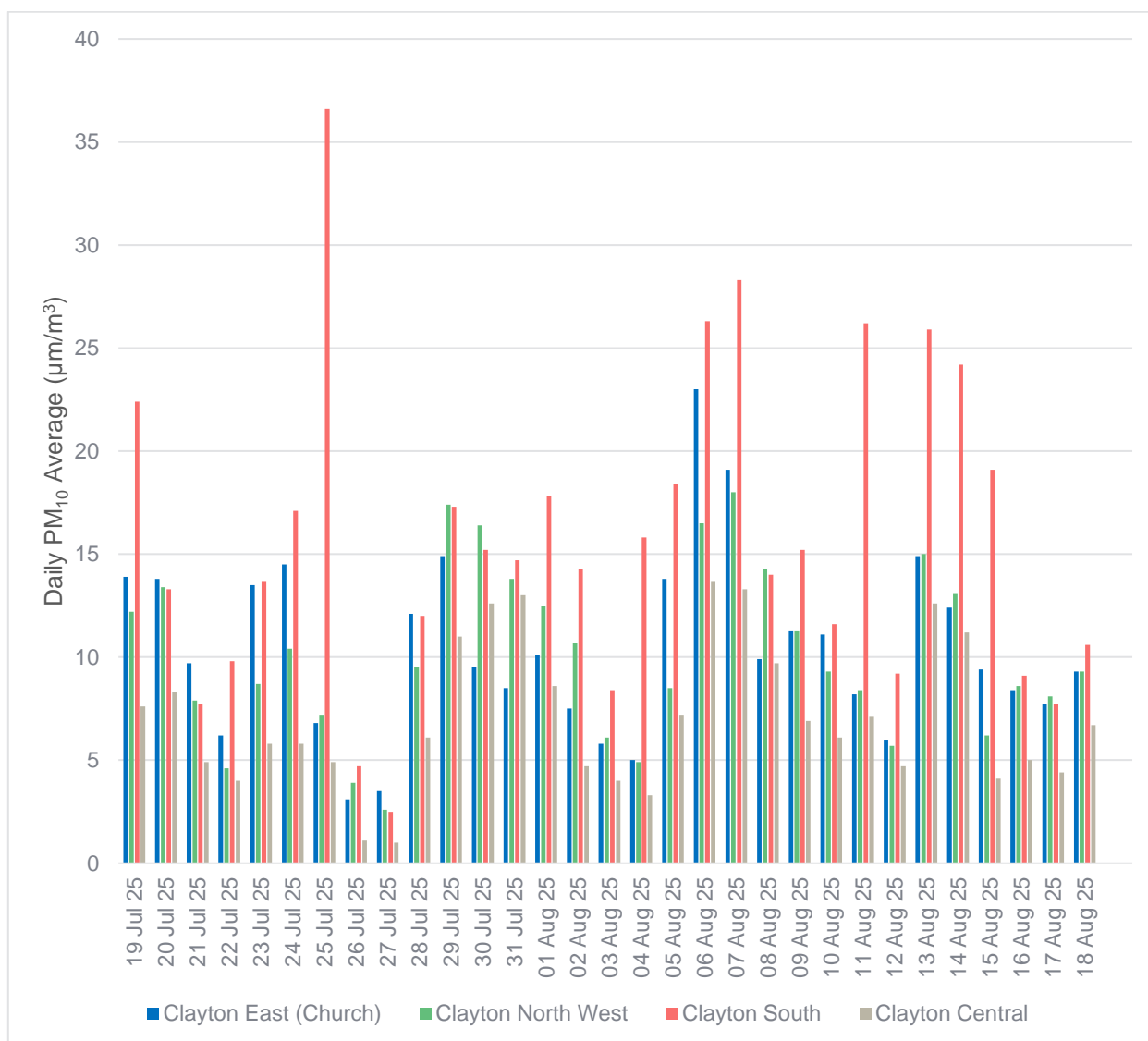


**Figure 5: Clayton air quality monitoring stations**

**Table 6: Clayton PM<sub>10</sub> Results**

Location	Parameter	Averaging Period	Max Concentration (µg/m³)	Median Concentration (µg/m³)	Days TARP Triggered in the Month	Days TARP Actions Implemented in the Month
Representative Background Locations						
Dandenong	PM <sub>10</sub>	24-hour	24.6	13.6	-	-
Clayton						
Central	PM <sub>10</sub>	24-hour	13.7	6.1	0	0

Location	Parameter	Averaging Period	Max Concentration ( $\mu\text{g}/\text{m}^3$ )	Median Concentration ( $\mu\text{g}/\text{m}^3$ )	Days TARP Triggered in the Month	Days TARP Actions Implemented in the Month
Northwest	PM <sub>10</sub>	24-hour	18.0	9.3	0	0
South	PM <sub>10</sub>	24-hour	36.6	14.7	0	0
East (Church)	PM <sub>10</sub>	24-hour	23.0	9.7	0	0



**Figure 6: Daily Averages PM<sub>10</sub> Results at Clayton**

### 3.3.1 Analysis

Active dust suppression activities include the use of water carts and street sweepers, and there were no elevated PM<sub>10</sub> monitoring events during the reporting period. Visual air inspections were also undertaken to proactively monitor and confirm there were no off-site dust impacts due to works on site.



## 3.4 Monash

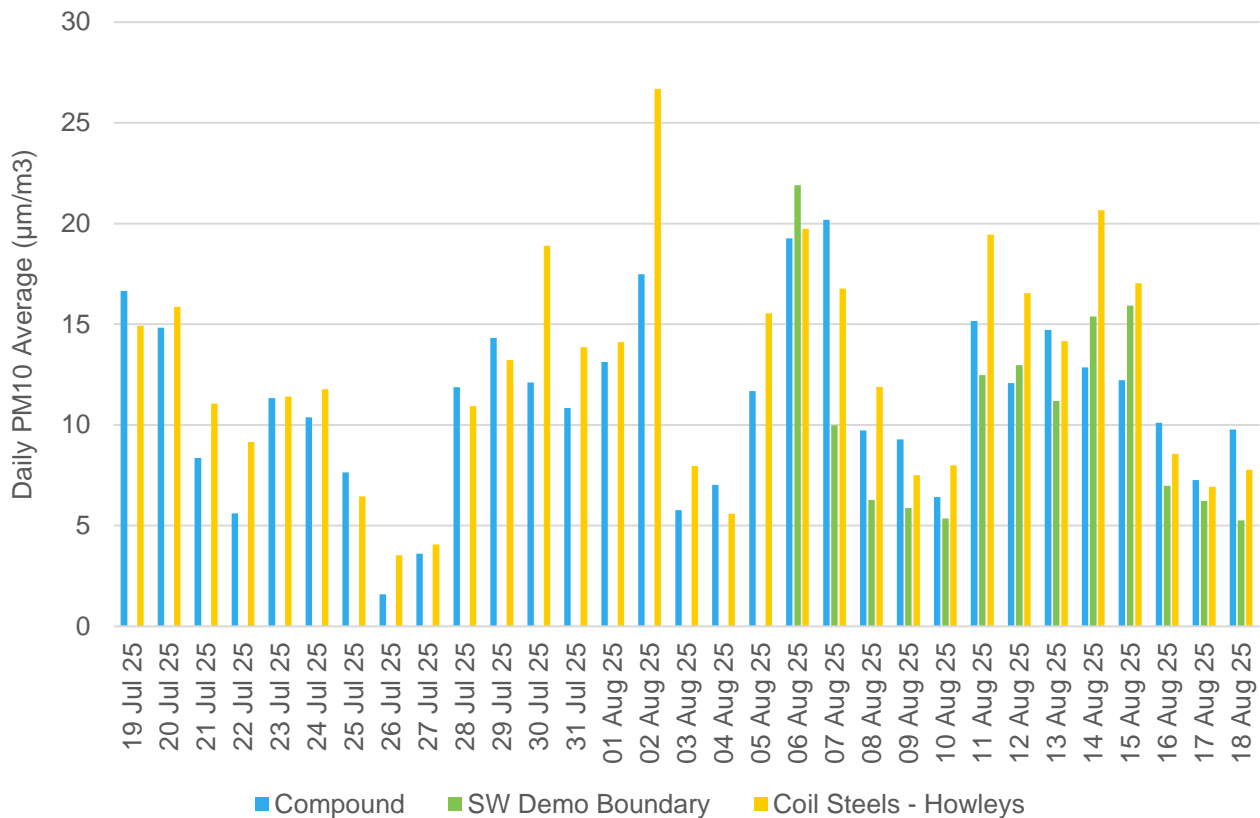


**Figure 7: Monash air quality monitoring stations**

**Table 7: Monash PM<sub>10</sub> Results**

Location	Parameter	Averaging Period	Max Concentration n (µg/m <sup>3</sup> )	Median Concentration n (µg/m <sup>3</sup> )	Days TARP Triggered in the Month	Days TARP Actions Implemented in the Month
<b>Representative Background Locations</b>						
Dandenong	PM <sub>10</sub>	24-hour	24.6	13.6	-	-
<b>Monash</b>						
Site Compound	PM <sub>10</sub>	24-hour	20.2	11.3	0	0
SW Demo Boundary	PM <sub>10</sub>	24-hour	21.9	10.0	0	0

Location	Parameter	Averaging Period	Max Concentration ( $\mu\text{g}/\text{m}^3$ )	Median Concentration ( $\mu\text{g}/\text{m}^3$ )	Days TARP Triggered in the Month	Days TARP Actions Implemented in the Month
Coil Steels - Howleys	PM <sub>10</sub>	24-hour	26.7	11.9	0	0



**Figure 8: Daily Averages PM<sub>10</sub> Results at Monash**

### 3.4.1 Analysis

Active dust suppression activities include the use of water carts and street sweepers, and there were no elevated PM<sub>10</sub> monitoring events during the reporting period. Visual air inspections were also undertaken to proactively monitor and confirm there were no off-site dust impacts due to works on site.

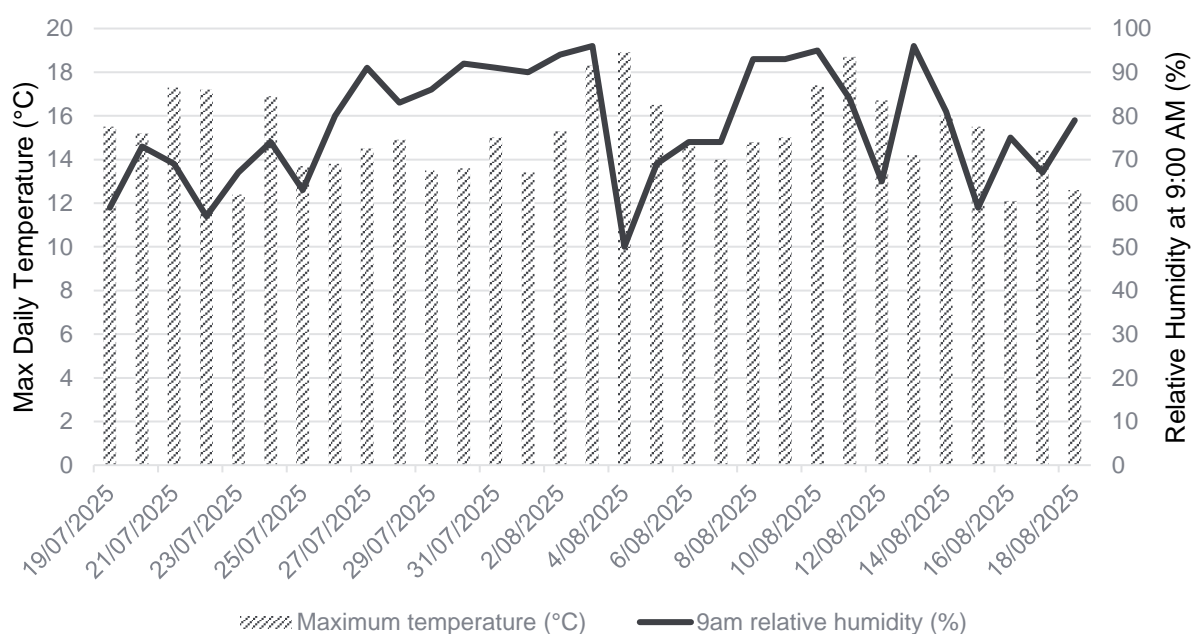
## 3.5 Meteorological Conditions

**Table 8: Daily weather observations for Moorabbin, Victoria**

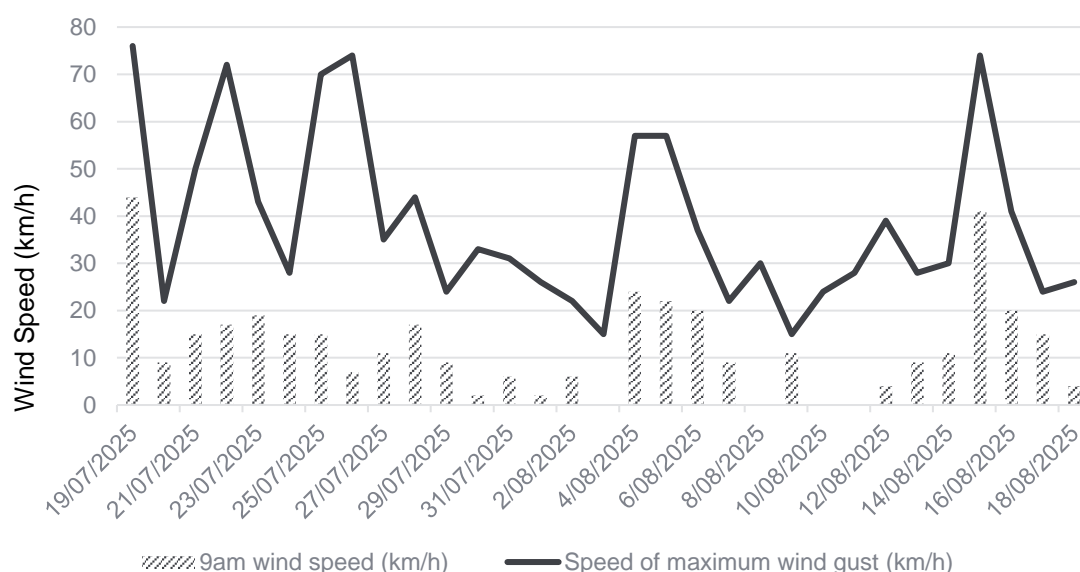
Statistic	Min Temperature (°C)	Max Temperature (°C)	Maximum Wind Gust Direction	Maximum Wind Gust Speed (km/h)	Relative Humidity @ 9:00 AM (%)
Mean	5.2	15.2	N/A	38.6	78.0
Lowest	0.5	12.1	SSW / W	15	50.0
Highest	10.1	18.9	N	76	96.0

**Table 9: Daily rain data for Moorabbin, Victoria**

Statistic	Rain (mm)
Daily Low	0.0
Daily High	9.4
Total	31.8



**Figure 9: Daily relative humidity and temperature observations for Moorabbin, Victoria**



**Figure 10: Daily wind speed observations for Moorabbin, Victoria**

## 4 Quality Assurance

### 4.1 Data Capture

Data capture is defined as the number of valid data periods collected divided by the number of available data periods. Valid data excludes period where the instrument is unavailable due to calibration and maintenance and excludes periods where the data has been rejected due to quality assurance/data validation procedures. Data capture statistics for the reporting period 19 July 2025 to 18 August 2025 are shown below.

**Table 10: Daily PM<sub>10</sub> Air Quality Monitoring Data Capture**

Location	Available Periods	Collected Periods	Data Capture	Details
Train Stabling Facility West – North	31	31	100%	There were no interruptions to monitoring at this location during the reporting period
Train Stabling Facility West – South	31	31	100%	There were no interruptions to monitoring at this location during the reporting period
Train Stabling Facility West – Linear Reserve North	31	17	55%	The monitor at this location remained online for the full reporting period, however no data was recorded for a period of 14 days. This issue was resolved, and the supplier has been contacted to provide further support. The Linear Reserve South monitor provided coverage throughout this period.
Train Stabling Facility West – Linear Reserve South	31	31	100%	There were no interruptions to monitoring at this location during the reporting period

Location	Available Periods	Collected Periods	Data Capture	Details
Clarinda TBM Launch Site – South Boundary	31	31	100%	There were no interruptions to monitoring at this location during the reporting period
Clarinda TBM Launch Site – East Boundary	31	31	100%	There were no interruptions to monitoring at this location during the reporting period
Clarinda TBM Launch Site – North Boundary	31	24	77%	Monitor was relocated to the North West Boundary location on 11 August.
Clarinda TBM Launch Site – North West Boundary	31	8	26%	Monitor was relocated from the North Boundary location on the 11 August and has had no interruptions since.
Clayton Site – Central	31	31	100%	There were no interruptions to monitoring at this location during the reporting period
Clayton Site – North West	31	31	100%	There were no interruptions to monitoring at this location during the reporting period
Clayton Site - South	31	31	77%	There were no interruptions to monitoring at this location during the reporting period
Clayton Site – East (Church)	31	31	100%	There were no interruptions to monitoring at this location during the reporting period
Monash Site Compound	31	31	100%	There were no interruptions to monitoring at this location during the reporting period
Monash – SW Demo Compound	31	13	42%	There were no interruptions to monitoring at this location during the reporting period. Monitor was established and operational from 6 August.
Monash – Coil Steels - Howleys	31	31	100%	There were no interruptions to monitoring at this location during the reporting period

## 4.2 Data Validation

Data contained in this report has been validated against performance and calibration requirements for each instrument. Data during commissioning, maintenance and calibration periods has been removed from the validated data sets.

**Table 11: Monitoring device calibration information**

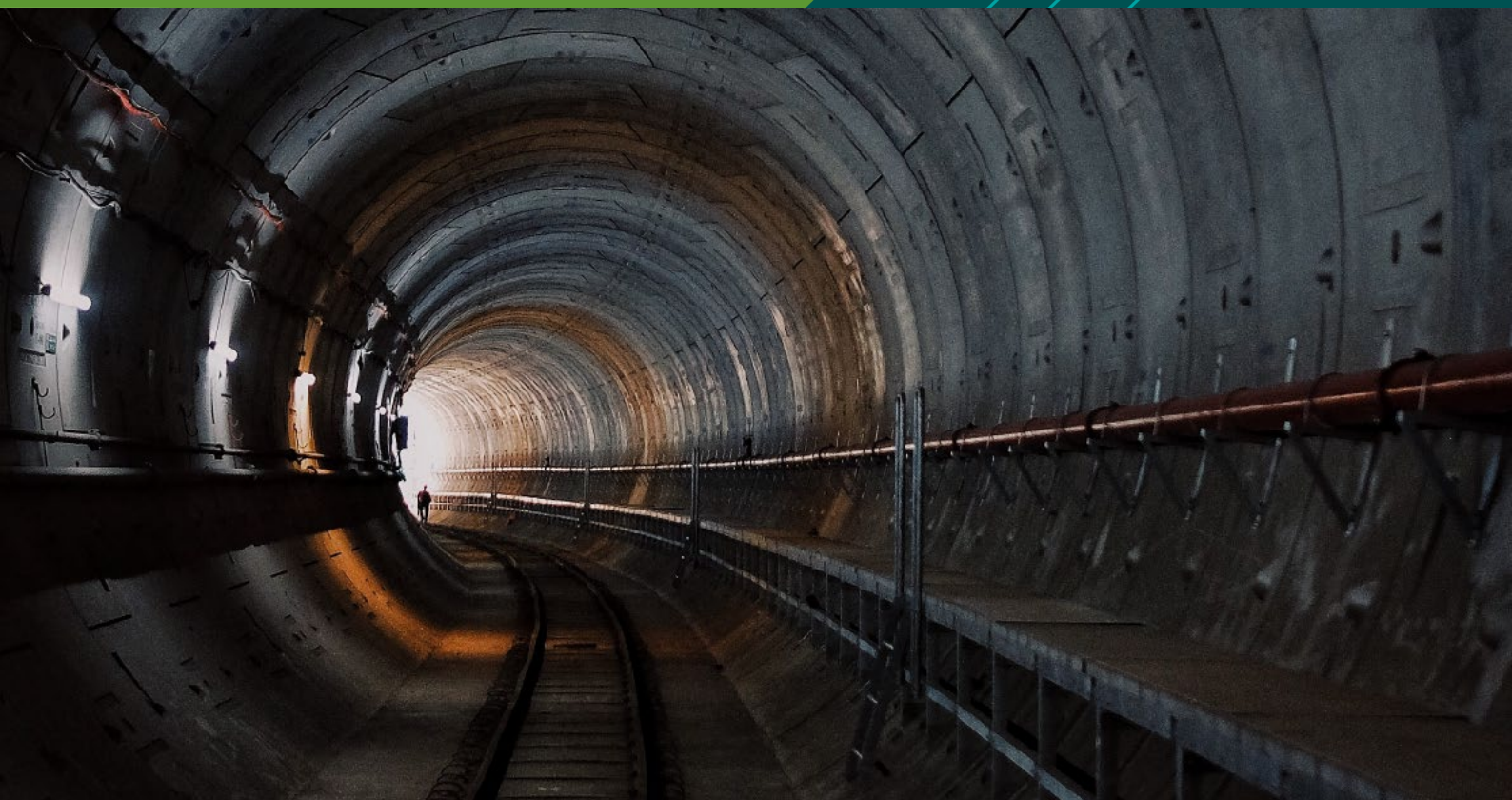
Location	Device Serial Number	Calibration Date	Calibration Due
Train Stabling Facility West – North	HEX-000418	17 Feb 2025	17 Feb 2027
Train Stabling Facility West – South	HEX-000498	20 Sep 2024	20 Sep 2026

Location	Device Serial Number	Calibration Date	Calibration Due
Train Stabling Facility West – Linear Reserve North	HEX-000706	19 Feb 2025	19 Feb 2027
Train Stabling Facility West – Linear Reserve South	HEX-000795	18 Dec 2024	18 Dec 2026
Clarinda TBM launch site – South Boundary	HEX-000348	19 Feb 2025	19 Feb 2027
Clarinda TBM launch site – East Boundary	HEX-000780	18 Dec 2024	18 Dec 2026
Clarinda TBM launch site – North Boundary	HEX-000791	18 Dec 2024	18 Dec 2026
Clarinda TBM launch site – North West Boundary	HEX-000791	18 Dec 2024	18 Dec 2026
Clayton – Central	HEX-000203	19 Mar 2025	19 Mar 2027
Clayton – East (Church)	HEX-000705	24 Oct 2024	24 Oct 2026
Clayton – North West	HEX-000623	19 Feb 2025	19 Feb 2027
Clayton – South	HEX-000744	27 Nov 2024	27 Nov 2026
Monash Site Compound	HEX-000400	11 Jun 2025	11 Jun 2027
Monash - SW Demo Boundary	HEX-000527	16 Jul 2025	16 Jul 2027
Monash - Coil Steels - Howleys	HEX-000671	11 Jun 2025	11 Jun 2027



# Glossary

Term / Abbreviation	Definition
$\mu\text{g}/\text{m}^3$	micrograms per cubic metre is a unit of measurement used to measure the mass of air pollutants (micrograms) per volume of air (cubic metre) as a concentration.
EAQDMP	The Environmental Air Quality and Dust Management Plan (EAQDMP) is environmental management documentation prepared by the PC to manage and monitor air quality impacts during construction of SRL East. It includes the RMMP and TARP and is verified by the IEA.
EES	Environment Effects Statement (EES) in Victoria, environment assessment of the potential environmental impacts or effects of a proposed development under the Environment Effects Act 1978.
EMF	The Environmental Management Framework (EMF) provides a transparent and integrated framework to manage environmental effects of the SRL East Project during construction and operation to achieve acceptable environmental outcomes.
EPA	Environment Protection Authority (EPA) is the Victorian regulator established under the Environment Protection Act 2017 and which has the statutory objective to protect human health and the environment from the harmful effects of pollution and waste.
EPRs	The Environmental Performance Requirements (EPRs) define the environmental outcomes that must be achieved during the design, construction and operation of SRL East and are included within the EMF.
ERS	The Environmental Reference Standard (ERS) is a tool made under the Environment Protection Act 2017 to identify and assess environmental values, including air quality, in Victoria.
IEA	The Independent Environmental Auditor (IEA) is appointed by the Victorian Government to undertake independent environmental reviews and audits of project activities including assessing compliance with the EMF and EPRs.
PC	Principal Contractor
$\text{PM}_{10}$	Particulate matter with an aerodynamic diameter of 10 micrometres ( $\mu\text{m}$ ) or less. $\text{PM}_{10}$ particles are small enough to have a potential impact on human health.
RMMP	The Risk Management and Monitoring Program (RMMP) plan outlines the approach to air quality monitoring and includes instrumental, visual monitoring, TARP and public reporting processes. The RMMP forms part of the EAQDMP.
TARP	The Trigger Action Response Protocol (TARP) defines a series of adaptive management measures that are implemented to avoid or mitigate impacts from dust emissions for nearby sensitive receptors in response to the results from monitoring. The TARP forms part of the EAQDMP.
TARP Triggered during the reporting month	This refers to the number of days TARP trigger criteria or the Air Quality Objective was exceeded during the reporting month.
TARP actions implemented during the reporting month	This refers to the number of days additional TARP mitigation measures or actions were required to be implemented as a response to project related exceedances. These actions are in addition to existing controls implemented on site.



**SUBURBAN RAIL LOOP EAST**  
Tunnels North

**Air Quality Monthly Report 19 July –  
18 Aug 2025**

SRL-WPD-TVC-NAP-REP-XLP-PWD-000003 Rev C

28 August 2025



## Version control and record

Version	Date	Comments
A	21/08/2025	Second report submitted to SRLA
B	26/08/2025	Reviewed to address SRLA comments
C	05/09/2025	Reviewed to address SRLA stakeholder team comments

## Contents

<b>Version control and record</b> .....	<b>i</b>
<b>Glossary</b> .....	<b>iii</b>
<b>Executive Summary</b> .....	<b>4</b>
<b>1. Introduction</b> .....	<b>5</b>
1.1 SRL East .....	5
1.2 Environmental Management Framework .....	5
<b>2. Air Quality Monitoring</b> .....	<b>6</b>
2.1 Context .....	6
2.2 Purpose .....	6
2.3 Monitoring Locations .....	6
2.4 Data Limitations and Verification.....	7
<b>3. Results</b> .....	<b>8</b>
3.1 ESF.....	8
3.2 Meteorological Conditions .....	10
<b>4. Quality Assurance</b> .....	<b>12</b>
4.1 Data Capture .....	12
4.2 Data Validation .....	12

## Glossary

Term	Definition
$\mu\text{g}/\text{m}^3$	micrograms per cubic metre is a unit of measurement used to measure the mass of air pollutants (micrograms) per volume of air (cubic metre) as a concentration.
<b>EAQDMP</b>	The Environmental Air Quality and Dust Management Plan (EAQDMP) is environmental management documentation prepared by the PC to manage and monitor air quality impacts during construction of SRL East. It includes the RMMP and TARP and is verified by the IEA.
<b>EES</b>	Environment Effects Statement (EES) in Victoria, environment assessment of the potential environmental impacts or effects of a proposed development under the Environment Effects Act 1978.
<b>EMF</b>	The Environmental Management Framework (EMF) provides a transparent and integrated framework to manage environmental effects of the SRL East Project during construction and operation to achieve acceptable environmental outcomes.
<b>EPA</b>	Environment Protection Authority (EPA) is the Victorian regulator established under the Environment Protection Act 2017 and which has the statutory objective to protect human health and the environment from the harmful effects of pollution and waste.
<b>EPRs</b>	The Environmental Performance Requirements (EPRs) define the environmental outcomes that must be achieved during the design, construction and operation of SRL East and are included within the EMF.
<b>ERS</b>	The Environmental Reference Standard (ERS) is a tool made under the Environment Protection Act 2017 to identify and assess environmental values, including air quality, in Victoria.
<b>ESF</b>	Emergency Support Facility
<b>IEA</b>	The Independent Environmental Auditor (IEA) is appointed by the Victorian Government to undertake independent environmental reviews and audits of project activities including assessing compliance with the EMF and EPRs.
<b>PC</b>	Principal Contractor
<b>PM<sub>10</sub></b>	Particulate matter with an aerodynamic diameter of 10 micrometres ( $\mu\text{m}$ ) or less. PM <sub>10</sub> particles are small enough to have a potential impact on human health.
<b>RMMP</b>	The Risk Management and Monitoring Program (RMMP) plan outlines the approach to air quality monitoring and includes instrumental, visual monitoring, TARP and public reporting processes. The RMMP forms part of the EAQDMP.
<b>SRL</b>	Suburban Rail Loop
<b>TARP</b>	Trigger Action Response Protocol
<b>TARP Triggered during the month</b>	Refers to the number of days TARP trigger criteria or the Air Quality Objective was exceeded during the reporting month.
<b>TARP actions implemented during the reporting month</b>	Refers to the number of days additional TARP mitigation measures or actions were required to be implemented as a response to project related exceedances. These actions are in addition to existing controls implemented on site.
<b>TV</b>	Terra Verde

## Executive Summary

### Key Outcomes

Key outcomes arising from the monthly air quality monitoring program:

- All instances of elevated PM<sub>10</sub> levels were investigated and additional controls implemented, where required.
- At the Emergency Support Facility (ESF), TARP Level 1 was implemented on one day during the reporting period while demolition works were undertaken. Monitoring data was reviewed, a visual inspection was carried out, and dust suppression controls were implemented in the demolition work area until conditions returned to normal.
- Proactive response undertaken to confirm there were no offsite dust impacts.

### Purpose of the Report

This report presents the results of the monthly review of the air quality monitoring data for each Suburban Rail Loop (SRL) East main works construction site for the period between 19 July 2025 – 18 Aug 2025 in accordance with SRL East EMF and EPRs AQ1 and AQ2.

Tunnels North works for SRL East commenced at the ESF on 30 June 2025, 601 High Street Road, Mount Waverley. Terra Verde (TV) is delivering the Tunnels North works as Principal Contractor (PC).

The PC implements an air quality monitoring program on each site that includes both visual observation and instrumental air quality monitoring. The purpose of the air quality monitors is to measure the concentration of small dust particles in the air near the construction site. These particles, known as PM<sub>10</sub> have the potential to impact human health. PM<sub>10</sub> refers to particles with an aerodynamic diameter of 10 µm or less.

This report compares the measured concentrations to air quality objectives that are defined in the ERS which is a tool under the Environment Protection Act 2017. The ERS sets out the air quality objectives for PM<sub>10</sub> which are measured over a 24-hour averaging period and are shown in Table 1 below. The objectives are risk-based concentrations that are not intended to be compliance levels, but they assist the PC to understand the risk to human health. When the instrumental monitor and/or visual observations identify a change in site conditions this prompts the PC to take actions on site to reduce dust impacts, and review mitigation measures applied.

### Scope of Reporting

Activities for the month of reporting have been:

- Site set up (Site offices establishment, timber walkway installation, mobilising caravans, etc).
- Vegetation clearing.
- Demolition of the Metro 10 building.
- Excavation works.
- Commence hoarding installation.



## Results

The key findings are summarised in Table 1. An analysis of these findings is provided in Section 3.

Table 1: Summary of air quality monitoring results

Location	Parameter	Avg Period	Max Conc. (µg/m³)	Median Conc. (µg/m³)	Air Quality Objective (µg/m³)	Days TARP Triggered in the Month	Days TARP Actions Implemented in the Month
Representative Background Locations							
EPA - Alphington	PM <sub>10</sub>	24-hour	22.49	14.19	50	N/A	N/A
Mount Waverley - ESF							
ESF north west	PM <sub>10</sub>	24-hour	28.76	14.06	50	1	1
ESF south west	PM <sub>10</sub>	24-hour	15.78	6.16	50	0	0

Note: Data from the EPA Alphington weather station is missing for 4 days (19 to 22 July) as it was not available at the time of reporting.

## 1. Introduction

### 1.1 SRL East

Suburban Rail Loop (SRL) will deliver a 90km orbital rail line connecting Melbourne's middle suburbs, linking every major train service from the Frankston Line to the Werribee Line via Melbourne Airport and transforming our public transport network.

SRL East from Cheltenham to Box Hill is now in major construction. The new rail line will connect major employment, health, education and retail destinations in Melbourne's east and south east, slashing travel times, reducing congestion and connecting passengers travelling on the Gippsland corridor to destinations across Melbourne.

Tunnels North works for SRL East commenced at the ESF on 30 June 2025, 601 High Street Road, Mount Waverley. TV is delivering the Tunnels North works as PC. The works will involve shaft excavation to enable ventilation and other support of tunnelling activity.

### 1.2 Environmental Management Framework

The EMF for SRL East provides a transparent and integrated framework to manage environmental effects of the Project and includes EPRs that define environmental outcomes that must be achieved during the design, construction, and operation phases of the Project. The EMF is available on the SRL East website at <https://bigbuild.vic.gov.au/library/suburban-rail-loop/planning/srl-east-environmental-management-framework>.

The development of the EMF has been informed by relevant legislation, policy and guidelines, and the specialist impact assessment studies completed for the SRL EES and the Minister's Assessment, dated 5 August 2022.

The EMF requires the PC to develop and implement an EAQDMP. As part of implementing this document plan, the PC is required to conduct monitoring of PM<sub>10</sub> concentrations and measure wind speed and direction at each Early Works construction site and at a representative control site. The EAQDMP also includes a TARP which defines a set of proactive and reactive triggers that prompt actions on site to reduce dust impacts, and review mitigation measures applied.



The PC regularly reviews the monitoring data at each site, for the purpose of assessing the effectiveness of EAQDMP implementation. The verified results of the PM<sub>10</sub> monitoring for the applicable monthly period are contained in this report, which will be available to the public, in accordance with the requirements of the EMF.

## 2. Air Quality Monitoring

### 2.1 Context

Maintaining air quality is important for public health, the liveability of our cities and our environment. Overall air quality conditions in Melbourne are good, however like all major cities, there are days where the background concentrations of air pollutants are very high on a regional basis. Sometimes these elevated concentrations are due to regional influences such as windblown continental dust, bushfires or hazard reduction burns. Emissions from traffic, home heating, and industrial emissions across Melbourne can also cause high background concentrations, especially when the weather is calm. EPA monitoring stations measure these background levels of pollution that already exist in the air within the surrounding area.

The EPA monitoring station at Alphington is used as the representative control site for the ESF.

Without effective management, construction of SRL East has the potential to contribute to these background concentrations which may impact public health. Comparison of SRL East monitoring results with publicly available EPA monitoring data is used by the PC to identify when construction-related activities are impacting local air quality, and conversely when the local air quality results may be influenced by background conditions outside of the influence of the construction site.

Meteorological conditions such as wind direction and speed can impact on the dispersion of particulates in the air and by monitoring these, the PC can respond when conditions on site change. Having records of wind conditions is also helpful for retrospectively identifying the activity that is causing any elevated dust concentrations.

### 2.2 Purpose

The purpose of the air quality monitors is to measure the concentration of small dust particles in the air near the construction site. These particles, known as PM<sub>10</sub> have the potential to impact human health. PM<sub>10</sub> refers to particles with an aerodynamic diameter of 10 µm or less.

The measured concentrations are compared to air quality objectives that are defined in the ERS which is a tool under the Environment Protection Act 2017. The air quality objectives defined in the ERS informed the objectives for air quality for SRL East, noting that the ambient air ERS is not a compliance standard that one can pollute up to. The ERS does not provide an indicator or objective for nuisance dust.

The objectives are risk-based concentrations that are not intended to be compliance levels, but they assist the PC to understand the risk to human health. The ERS sets out the air quality objectives for PM<sub>10</sub> which are measured over a 24-hour averaging period, as reproduced below in Table 2.

Table 2: Ambient air quality objectives for PM<sub>10</sub>

Indicator	Air Quality Objective (µg/m <sup>3</sup> )	Averaging Period
Indicator Particles as PM <sub>10</sub> (maximum concentration)	50	24-hour

The measured concentrations (which include both existing background concentrations and SRL East's incremental contribution over a 24-hour period) are presented in Section 3 and compared against the air quality objective. Monitoring is continuous, even when there are no construction-related activities occurring on the site. Periods of time where there are no site activities are classified as 'out of hours'. The potential for dust generation from the work sites is much lower when there are no site activities occurring, however dust can still be generated at the work site during 'out of hours' periods due to wind erosion.

### 2.3 Monitoring Locations

Air quality monitors are located on or adjacent to the construction sites, to represent local air quality conditions, in positions that enable the PC to adequately measure potential impact of works on local sensitive receivers including residents.

The air quality monitors were installed on the following dates at each of the following locations. The location of these monitors is shown on maps in Section 3 of this Report.

Table 3: Air quality monitoring locations active during reporting period

Monitoring Location	Date Commissioned	Coordinates	Monitoring Parameters	Representative Control Site
Mount Waverley – ESF north west	30 June 2025	Latitude: -37.87036 ° Longitude: 145.14550 °	PM <sub>10</sub>	Alphington EPA monitoring station
Mount Waverley – ESF south west	30 June 2025	Latitude: -37.87067 ° Longitude: 145.14543 °	PM <sub>10</sub>	Alphington EPA monitoring station

## 2.4 Data Limitations and Verification

The following limitations apply to this data:

- Meteorological conditions on site can affect measurements made by monitoring devices. For instance, dust measurements can be impacted by rainfall, fog and/or humidity (with water droplets in the air being mistaken as dust particles). Displaying periods of inclement weather allows reviewers to identify measurements that may have been impacted.

### 3. Results

Figure 1 shows the location of the ESF air quality monitoring stations. Data has been provided in tabular and graphical form (see Table 4 and Figure 2) to visually present 24-hour averages of PM<sub>10</sub> over the monthly period. The data included in this report has been verified by Terra Verde and relevant subject matter experts.

#### 3.1 ESF

ESF-Air Quality Monitoring Locations



Figure 1: ESF air quality monitoring stations (Note: Current ESF north west monitoring location is temporary and the monitor will be relocated to the north of site when a suitable location becomes accessible).

Monitor Number	Monitoring Location	Max Daily PM <sub>10</sub> Concentration (µg/m <sup>3</sup> )	Median Daily PM <sub>10</sub> Concentration (µg/m <sup>3</sup> )	Air Quality Objective (µg/m <sup>3</sup> )	Days TARP Triggered in the Month	Days TARP Actions Implemented in the Month
-	Representative Background – Alphington EPA monitoring station	22.49	14.19	50	N/A	N/A
1	Mount Waverley – ESF north west	28.76	14.06	50	1	1
2	Mount Waverley – ESF south west	15.78	6.16	50	0	0

Table 4: ESF PM<sub>10</sub> results

Note: Data from the EPA Alphington weather station is missing for 4 days (19 to 22 July) as it was not available at the time of reporting.

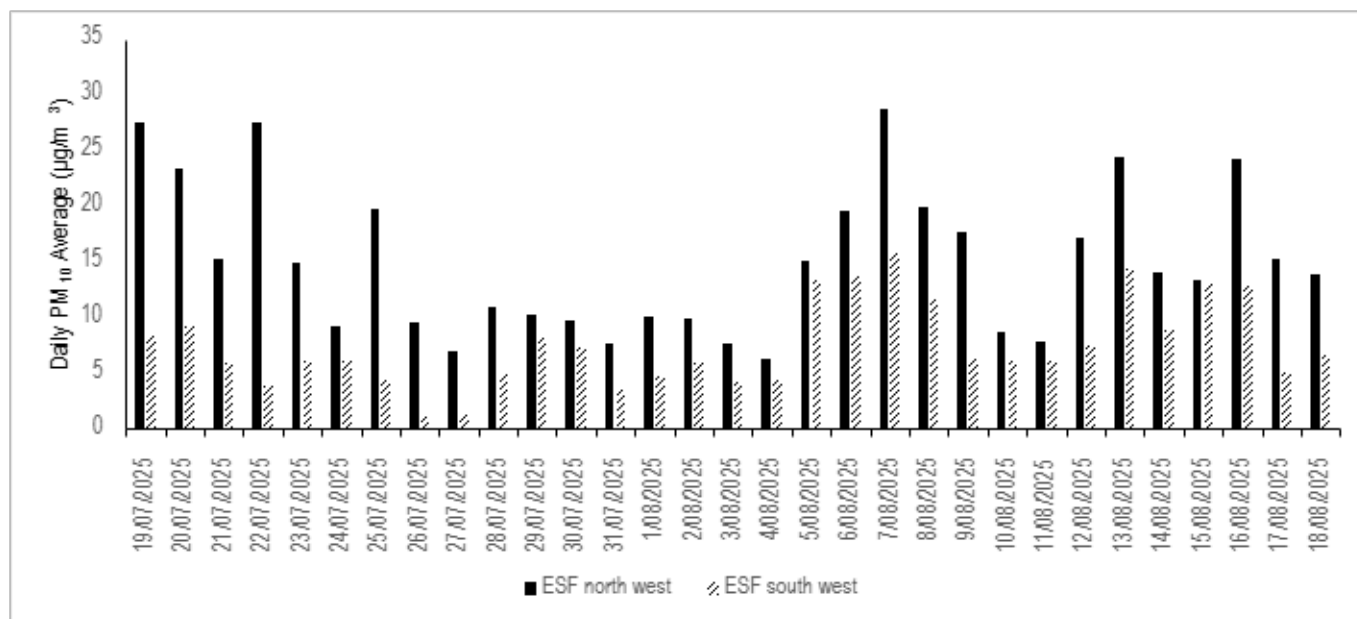


Figure 2: ESF PM<sub>10</sub> daily averages from 19 June to 18 August

### 3.1.1 Daily Objective Analysis

No daily averages above the Daily Objective were reported during the reporting period.

The maximum daily average PM<sub>10</sub> concentration was 28.76µg/m<sup>3</sup> at the ESF northwest monitoring location. As demolition works were undertaken, a proactive visual inspection was carried out, and no dust was observed leaving the site.

Although the monitors are located close to each other, small differences in siting conditions can influence results. For example, the ESF north-west monitor is positioned closer to the demolition area where the excavator was operating, which can result in higher localised concentrations. Other contributing factors include wind direction, the shielding effects of the Mitre 10 shed structure on the ESF south-west monitor, and short-term dust or emission sources. These influences can cause variations in readings, even over relatively short distances.

Noted that the ESF north-west monitor will be relocated to the northern side of the site once the location becomes available and hoarding is installed.

### 3.1.2 TARP Analysis

The TARP uses the continuous data from the on-site PM<sub>10</sub> monitors to enable short-term, proactive and reactive air quality management. Alert values are set at three 'levels' in response to PM<sub>10</sub> concentrations:

- Level 1 – Preventive Alert Level: investigate and prepare.
- Level 2 – Preventive Action Level: action required.
- Level 3 – Trigger Level: further action and changes to operations required.

During the demolition works of the existing warehouse on 7 August 2025, the Level 1 TARP was actioned. Monitoring data was reviewed, a visual inspection was undertaken, and dust suppression controls were implemented in the demolition work area until conditions returned to normal. Simultaneous PM<sub>10</sub> monitoring data from the ESF southwest monitor (located 10 metres from the ESF northwest monitor) reported lower levels consistent with background conditions. The proximity of works to the northwest monitor likely influenced the readings.

All other instances of elevated PM<sub>10</sub> levels were reported outside of normal working hours or during inclement weather when no construction works were occurring and therefore discounted from this analysis.

### 3.2 Meteorological Conditions

Table 5: Daily weather observations for Melbourne (Olympic Park), Victoria 19/07/2025 – 18/08/2025. Data Source BOM.

Statistic	Min Temperature (°C)	Max Temperature (°C)	Maximum Wind Gust Direction	Maximum Wind Gust Speed (km/h)	Relative Humidity @ 9:00 AM (%)
Mean	6.4	15.3	N/A	32.5	79.8
Lowest	3.2	12.7	NNE/S	15	60
Highest	10.7	19.8	N	54	100

Table 6: Daily rain data for Melbourne (Olympic Park), Victoria 19/07/2025 – 20/08/2025. Data Source BOM.

Statistic	Rain (mm)
Daily Low	0
Daily High	10.2
Total	31.4

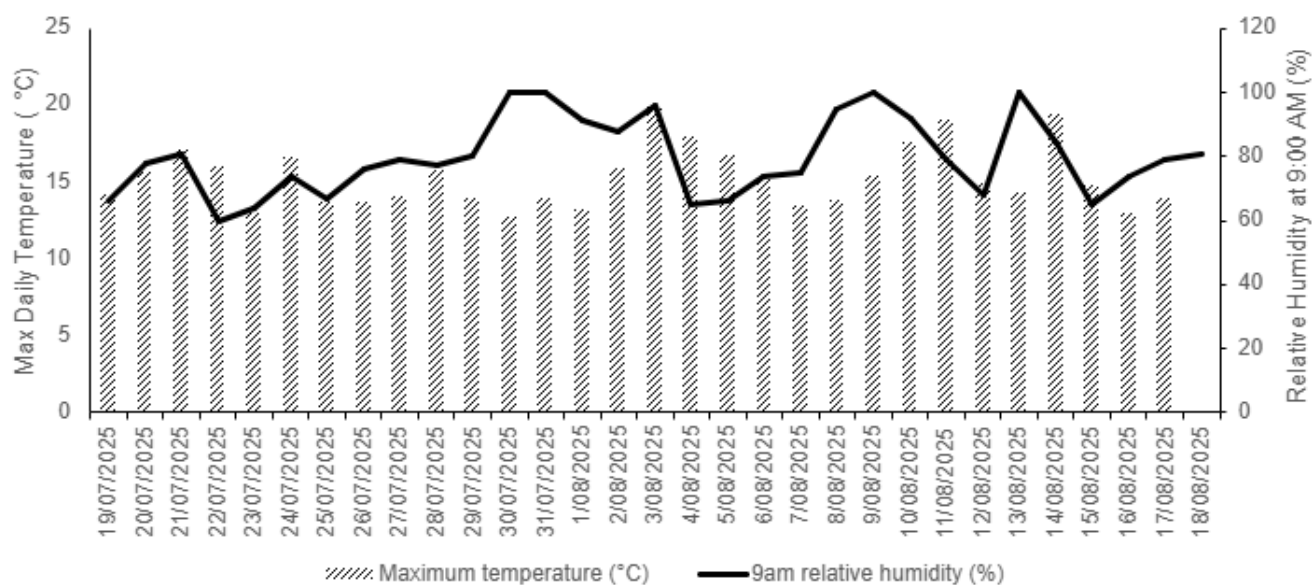


Figure 3: Daily relative humidity and temperature observations for Melbourne (Olympic Park), Victoria 19/07/2025 – 18/08/2025. Data Source BOM.



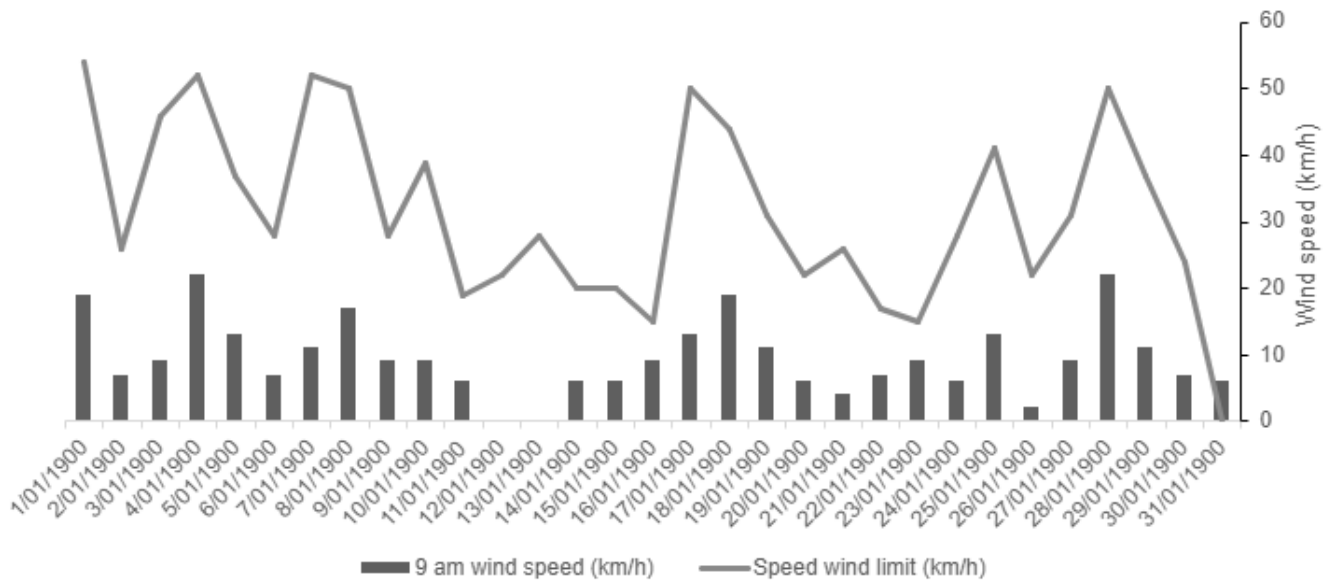


Figure 4. Daily wind speed observations for Melbourne (Olympic Park), Victoria 19/07/2025 – 18/08/2025. Data Source BOM

## 4. Quality Assurance

### 4.1 Data Capture

Data capture is defined as the number of valid data periods collected divided by the number of available data periods. Valid data excludes period where the instrument is unavailable due to calibration and maintenance and excludes periods where the data has been rejected due to quality assurance/data validation procedures.

Data capture statistics for the reporting period 19 July 2025 – 18 August 2025 are shown in Table 7, below.

Data capture statistics were 100% for all parameters at ESF for the reporting period. Main works have not commenced at Burwood or Glen Waverley.

Table 7: Air quality monitoring, data capture summary

Location	Parameter	Averaging Period	Collected Periods	Available Periods	Data Capture
Mount Waverley – ESF north west	PM <sub>10</sub>	24-hours	31	31	100%
Mount Waverley – ESF south west	PM <sub>10</sub>	24-hours	31	31	100%

### 4.2 Data Validation

Data contained in this report has been validated against performance and calibration requirements for each instrument. Data during commissioning, maintenance and calibration periods has been removed from the validated data sets.

Table 8: Monitoring device calibration information

Location	Device Serial Number	Calibration Date	Calibration Due
Mount Waverley – ESF north west	HEX-000707	11/06/2025	11/06/2027
Mount Waverley – ESF south west	HEX-000635	11/06/2025	11/06/2027