



Heatherton Community Reference Group

Meeting #15

24 February 2026



We respectfully acknowledge the Traditional Owners of this land
and pay respect to their Elders, past and present.



Welcome

Agenda

Topic	Speaker
Welcome	Kim
Actions & questions	All
Project updates	SRLA
Communications and engagement update	Suburban Connect (SC)
Environmental monitoring	SC
Break	
Works update	All
Approach to meetings in 2026	Kim
Other business	All

Actions & questions

Actions | Current

CRG meeting date	Action	Status
21 October 2025	SRLA and SC to explore opportunities to provide regular works updates to community, such as types of activities, when works are called off etc. (e.g. via SMS, web updates etc.)	Localised SMS updates to be trialled – finalising details.
21 October 2025	SC to investigate vibration monitoring results for roller activity associated with western boundary hoarding. (Specific times provided – 3:43pm 16/10, 9am 18/10). NOTE: request to present on vibration roller data at next CRG meeting.	See slides 20-25.
21 October 2025	SRLA / SC share air quality monitoring data for 22 October 2025 (noting extreme weather predicted on this date). Results also published online in the monthly verified air quality reports.	See slide 27.
21 October 2025	Approach to meetings in 2026 and what reporting CRG wants to see in the sessions (e.g. enquiries and complaints).	To be discussed in meeting.

Questions

Question	Update
<p>Why is it taking so long to put up the hoarding along Kingston Rd? Especially when the Linear Walk hoarding was put up in only in a few days.</p> <ul style="list-style-type: none"> • Was there something along Kingston Rd? • Was a hygienist called out? 	<p>Hoarding installation works along Kingston Road are on track. These works has included preparing a safe work area, locating underground services, excavation for fence posts, installation of fencing panels, and painting. The barriers will be removed shortly.</p> <p>The excavation required the safe management and removal of materials containing asbestos which was done under the same controls as we did on the rest of the site.</p>
<p>Why are there concrete barriers and traffic management up on Kingston Rd for months on end when there's no works happening?</p>	<p>These barriers have been in place for the hoarding installation works detailed above. These barriers are due to be removed in March.</p> <p>There will be various traffic impacts at times throughout 2026 related to works at the three sites on Kingston Road. These will be detailed in routine works notifications.</p>
<p>Can we please get a “No SRL access” or the like sign for Nicholas Gve.</p>	<p>SC to investigate changing the sign that LOR installed</p>

Project updates

Project updates

Linewide package award

- The Linewide package was awarded to **TransitLinX** in December 2025
- TransitLinX is a consortium of industry leaders including John Holland, RATP Dev, Alstom, KRB and WSP
- TransitLinX will be known as Linewide Alliance through construction



Linewise package key deliverables

- Design & build systems – signalling, platform screen doors, passenger info displays, communications, CCTV, tunnel ventilation
- Operate & maintain turn-up-and-go network for a 15-year term contract
- Build the train stabling facility and control centre in Heatherton
- The contract includes a 15-year agreement to operate and maintain the new network



Site updates - Heatherton



Heatherton eastern tunnel entrance – site handed over to Suburban Connect early 2026



First TBM cutterhead arrived in Heatherton, December 2025

Monash

Aerial image of the Monash worksite taken in December 2025

Demolition and site preparation works completed to prepare for D-walling and station box excavation



Burwood

Aerial image of the Burwood worksite taken in December 2025

Excavation for the tunnel access shaft has been completed and construction of the acoustic sheds has commenced.



Glen Waverley

Myrtle Street realigned north-south to connect to Coleman Parade



OFFICIAL



Communications and engagement update

Communication and engagement | Update

- *From last CRG (October 2025) to 31 December 2025, Suburban Connect received 12 complaints from 9 residents*
- Key themes included:
 - *Noise dust and general construction impacts*
 - *Vibration from Emergency works the night 21 Oct*

From 1 January 2026 to 20 February Suburban Connect has received 32 complaints from 16 residents

- Key themes included:
 - *Noise including screeching*
 - *Vehicles turning right into site*
 - *Dust and rubble on Kingston Rd*

Communication and engagement | Update

Summer Blitz Program

- 131 expressions of interest distributed
- 53 responses

Solar panel cleaning

- 4 completed
- 10 booked in

Air-conditioning filter clean

- 13 Completed
- 2 booked in

Community engagement initiatives (as at 12 Feb)

- Double Glazing Program
- Fencing
- Both programs nearing completion

Community Crew

- 118 Car washes
- 87 Window cleans



Environmental monitoring

Environmental monitoring update to cover:

- Actions from previous meeting:
 - Noise data for Thursday (16/10) and Friday (17/10) and vibration data for Thursday (16/10) and Saturday (18/10), specifically related to construction of hoarding and rolling activities.
 - Air quality monitoring data for the Clarinda area for Wednesday, 22 October 2025
- Air quality monitoring during severe weather event on Friday 9 January 2026
- Plant screeching noise overview and noise monitoring results – out of hours works
- Management of dirt and dust on Kingston Road

Noise monitoring

Summary noise monitoring results - hoarding extension & rolling activities

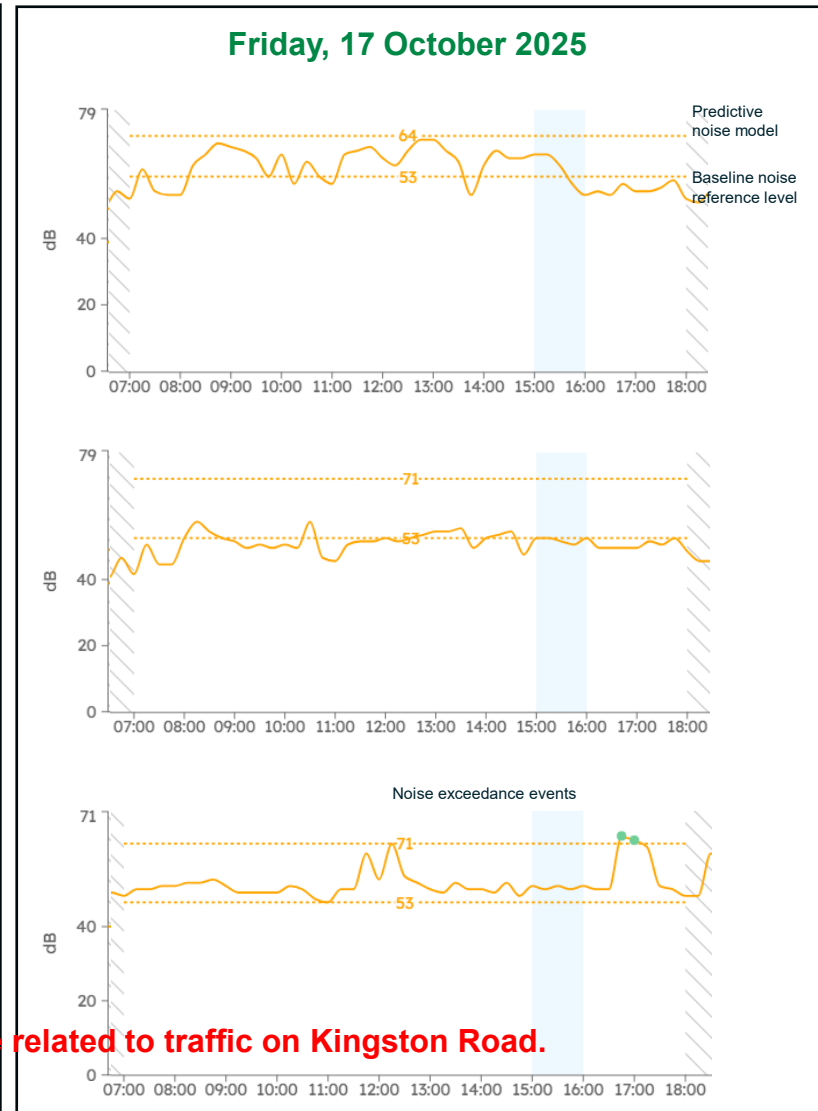
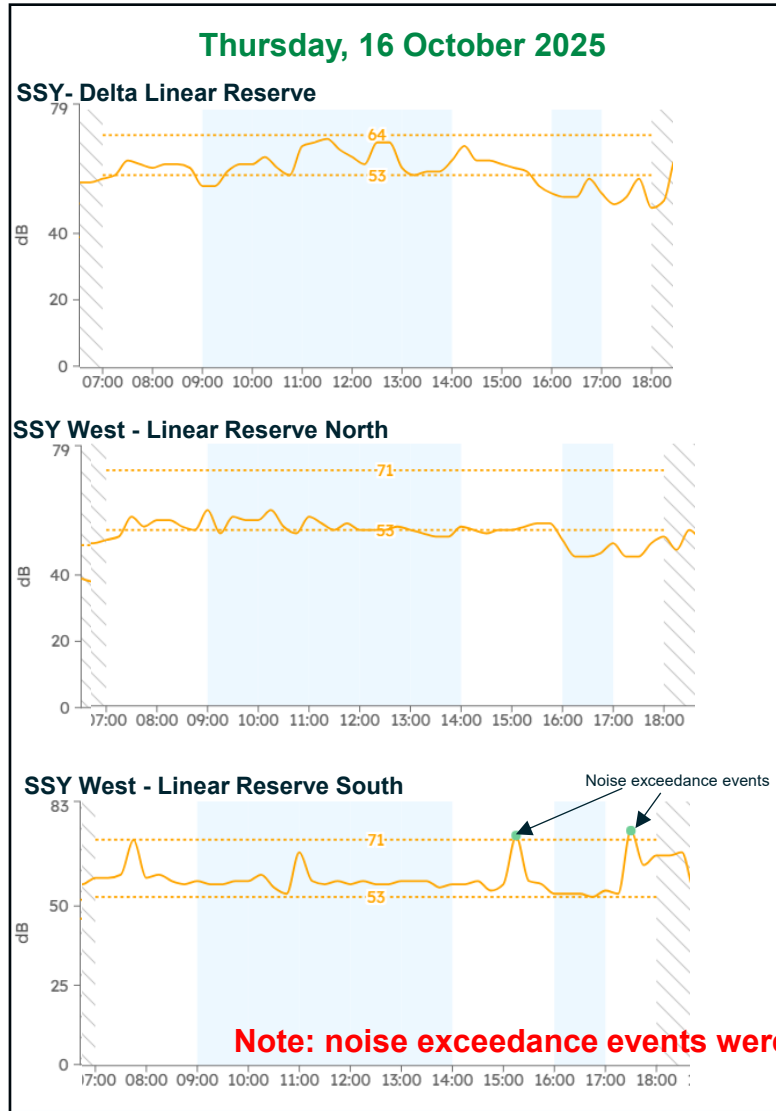
Results of noise monitoring:

- Noise monitoring within the Kingston Linear Reserve confirmed **the measured noise levels were below modelled threshold levels**.
- Modelled threshold levels are based on the predicted outputs from noise modelling of plant and equipment used in the construction of the extended hoarding (including rolling activities).
- **Noise levels were loudest towards Kingston Road (i.e. traffic)** than what was measured at the hoarding construction location.
- Baseline noise reference levels were derived from the EES and follow up baseline monitoring events.

Noise exceedance events:

- Thursday, 16 October 2025 - Two noise exceedance events were recorded at the linear reserve south monitor, both events were related to traffic on Kingston Road.
- Friday, 17 October 2025 - Two noise exceedance events were recorded at the linear reserve south monitor, both events were related to traffic on Kingston Road.

Noise monitoring for 16 & 17 October 2025 - hoarding extension & rolling



Note: noise exceedance events were related to traffic on Kingston Road.

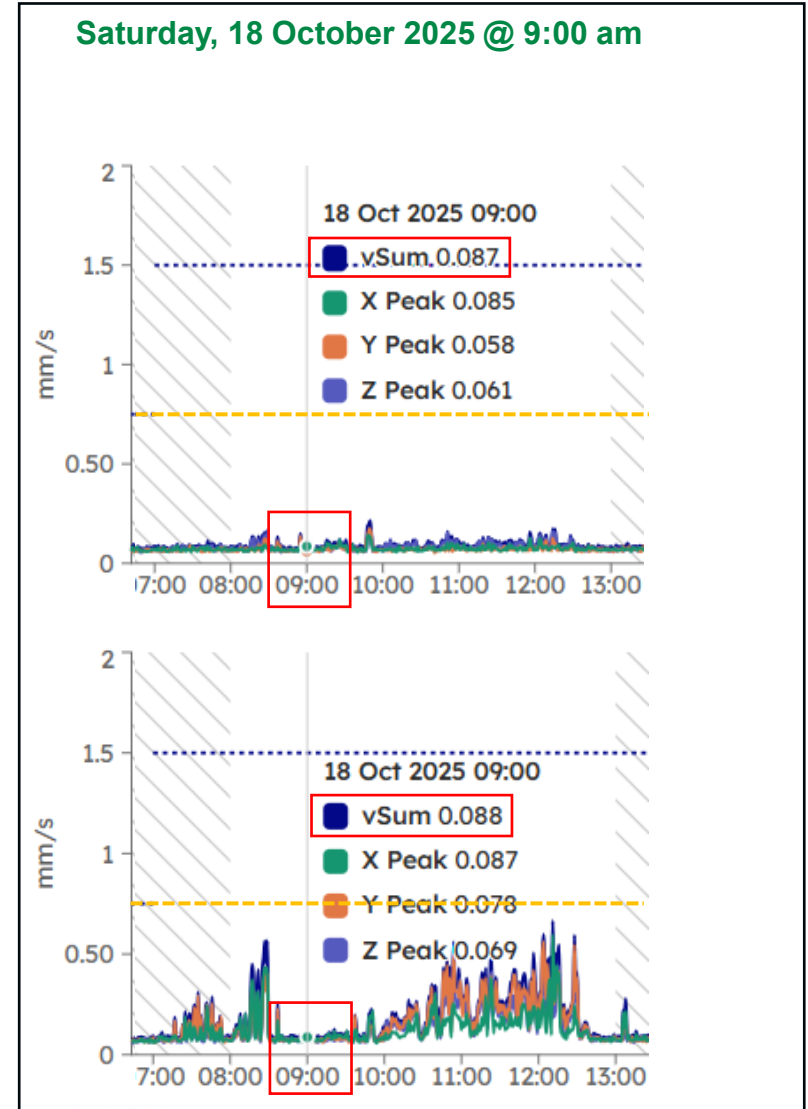
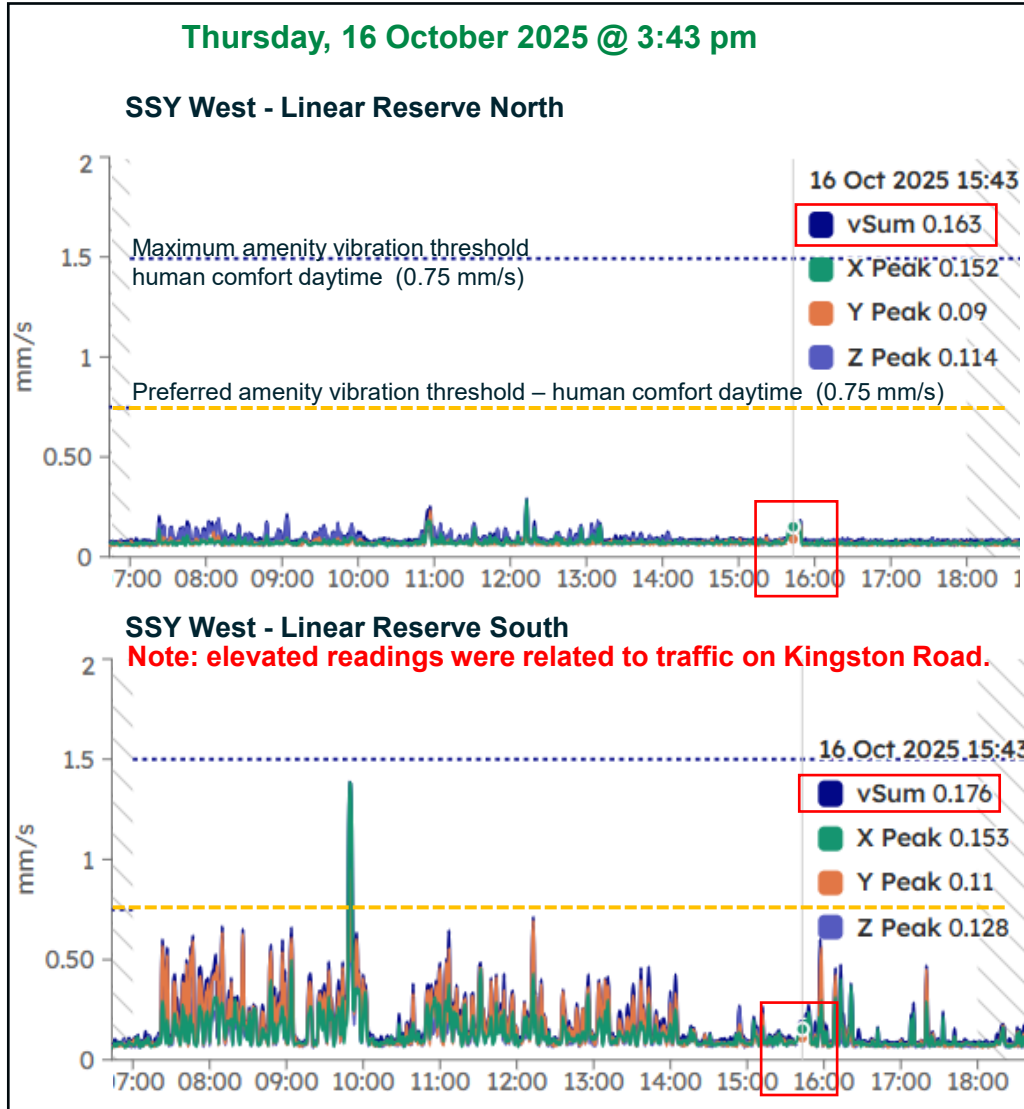
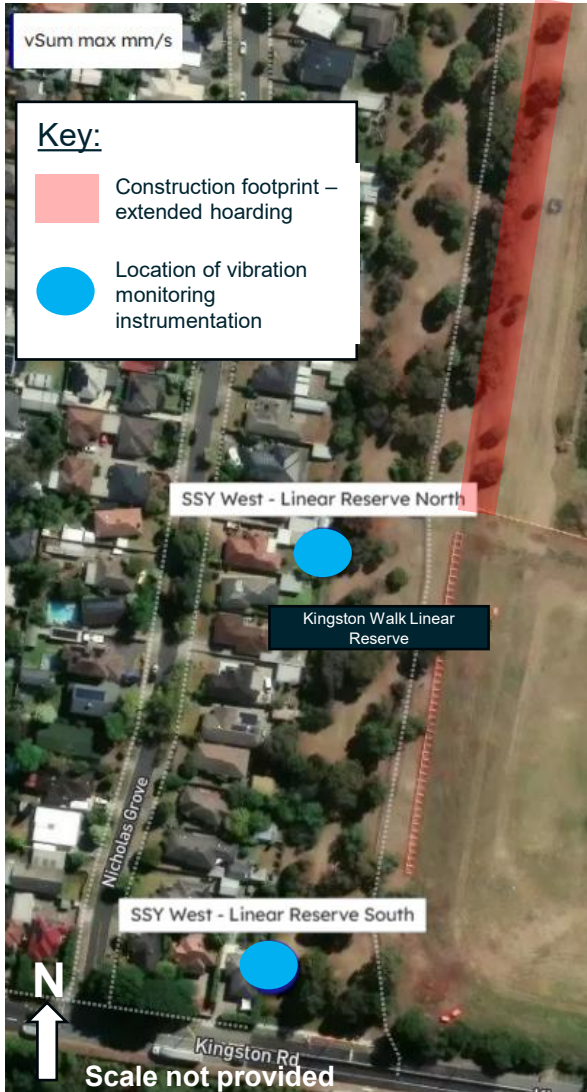
Vibration monitoring

Summary of vibration monitoring results

Results of vibration monitoring:

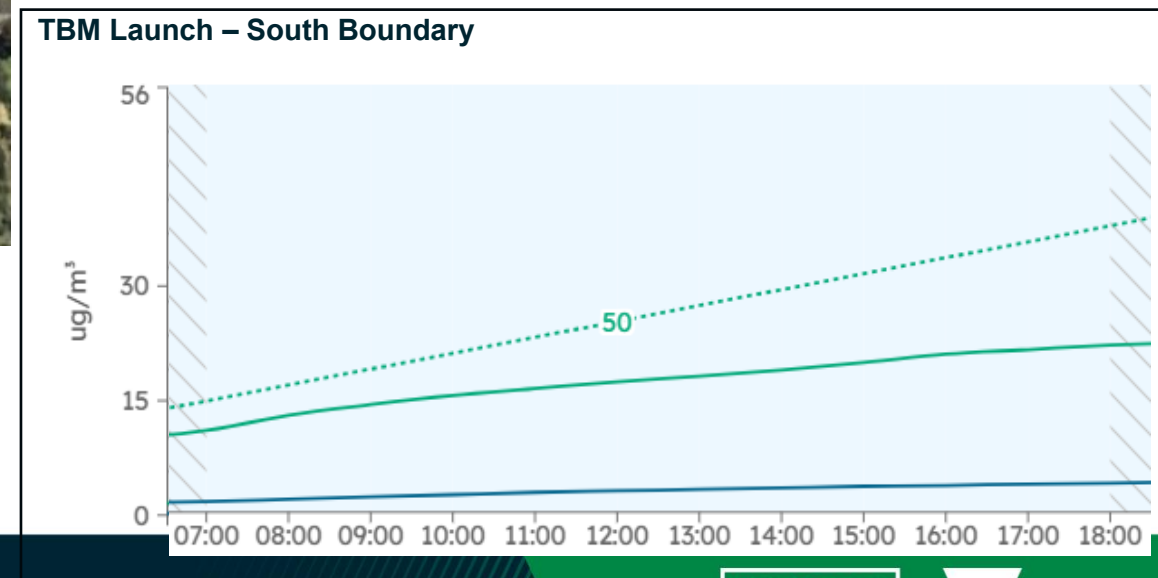
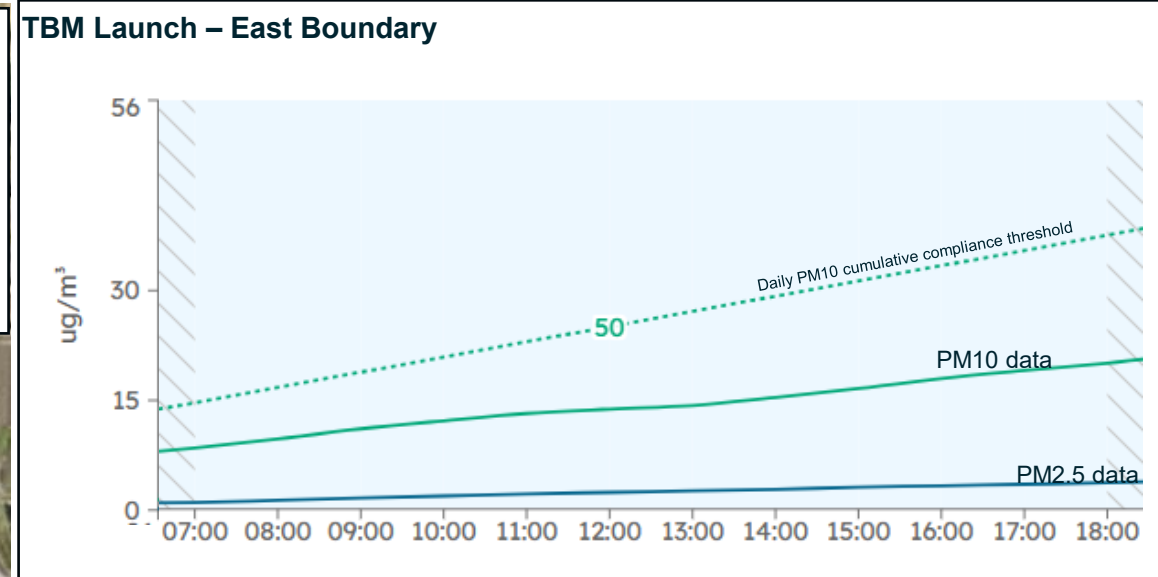
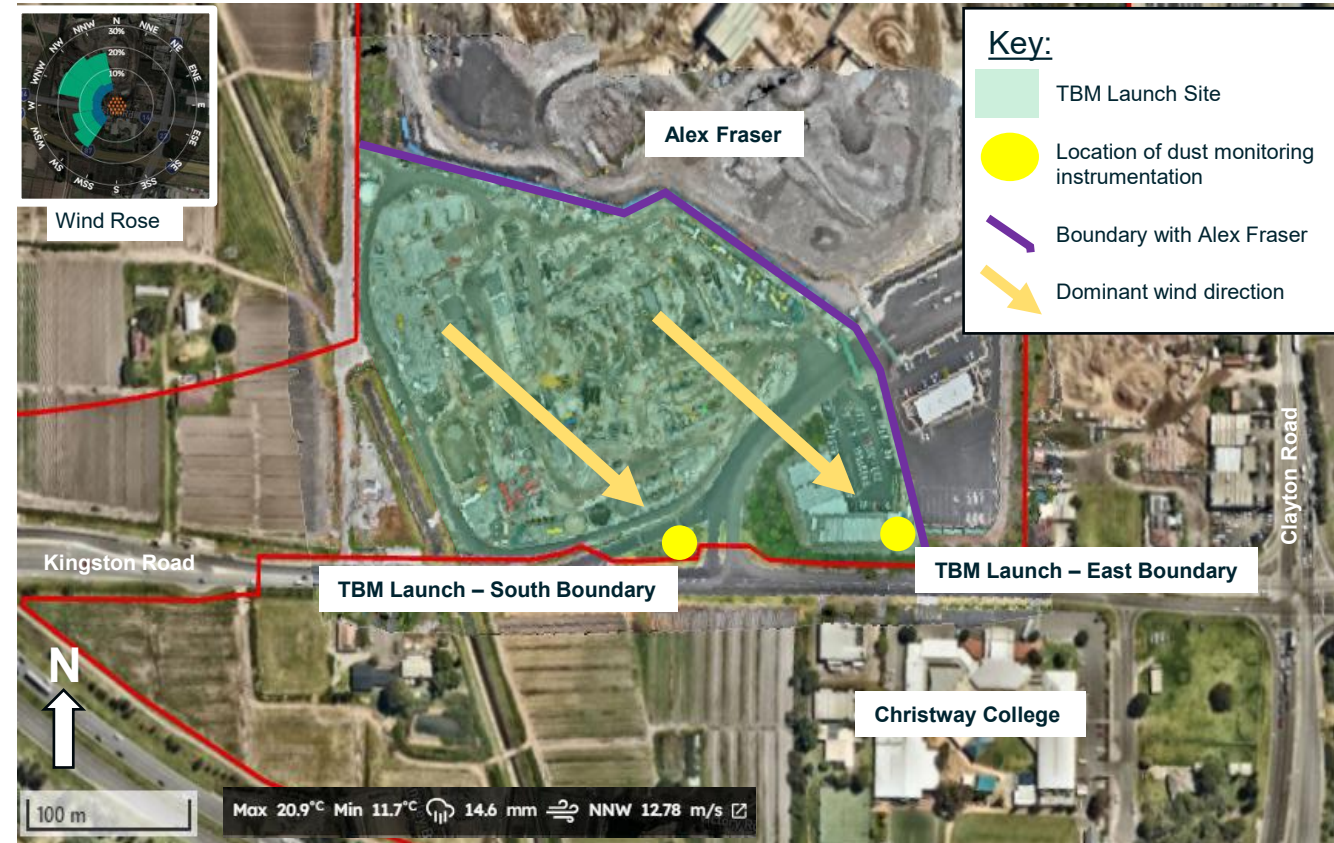
- **No structural vibration exceedances.** All results were below 5 mm/s (EPR NV7).
- **No amenity vibration exceedances.** All results were below 0.75 mm/s (EPR NV6).
- Elevated vibration results measured at SSY West – Linear Reserve South on 16 and 18 October were due to background source (Kingston Road traffic) and not due to construction activities.
- Vibration monitoring data from the SSY West – Linear Reserve North location is closer to construction activities and therefore more representative of construction activities.
- Preferred residential vibration amenity threshold (EPR NV6) = 0.75 mm/s (solid orange line)
- Maximum residential vibration amenity threshold (EPR NV6) = 1.5 mm/s (dotted blue line)

Vibration levels for Thursday (16/10) @ 3:43 pm & Saturday (18/10) @ 9:00 am



Air quality monitoring

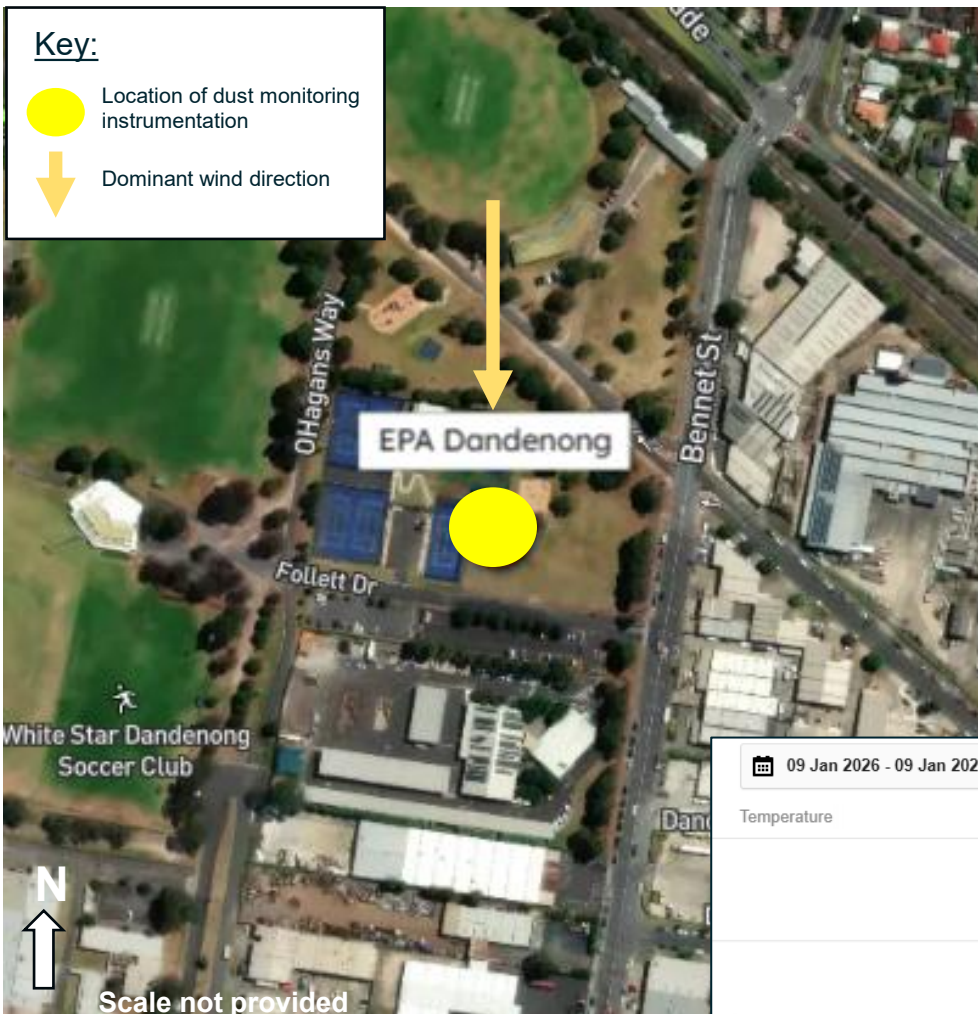
Dust monitoring results for the TBM launch site, Clarinda - Wednesday, 22 October 2025



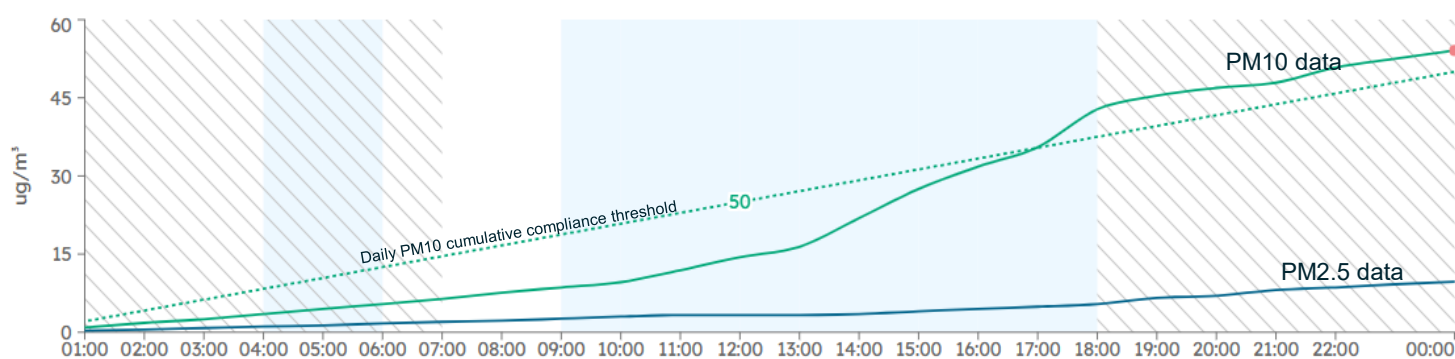
Bureau of Meteorology Moorabbin, 22 October 2025 Daily Weather Observations

Date	Day	Temps		Rain	Evap	Sun	Max wind gust			9 am			3 pm								
		Min	Max				Dir	Spd	Time	Temp	RH	Cl	Dir	Spd	MSLP	Temp	RH	Cl	Dir	Spd	MSLP
		°C	°C	mm	mm	hours	km/h	local	°C	%	g th	km/h	hPa	°C	%	g th	km/h	hPa			
22	We	13.3	21.1				WNW	80	16:07	14.9	86	8	NW	4	996.2	19.8	44	8	NW	41	993.9

Dust monitoring - Friday 9 January 2026 (EPA reference site - Dandenong)



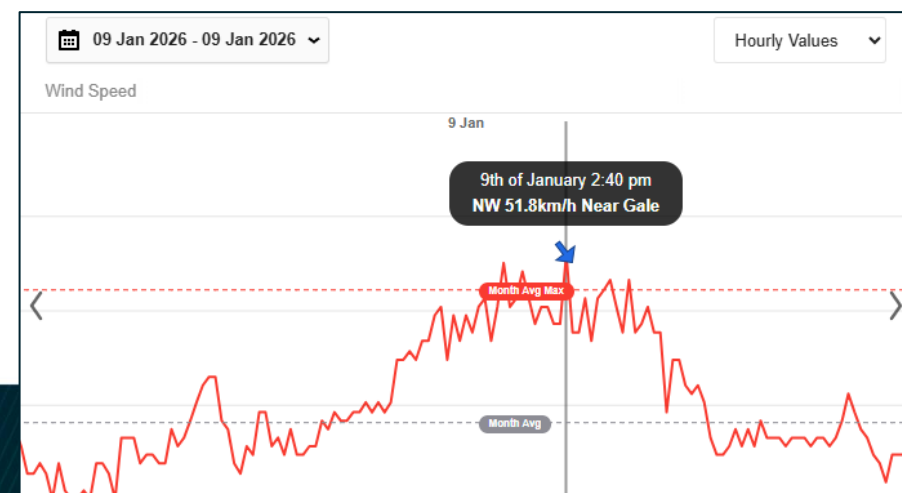
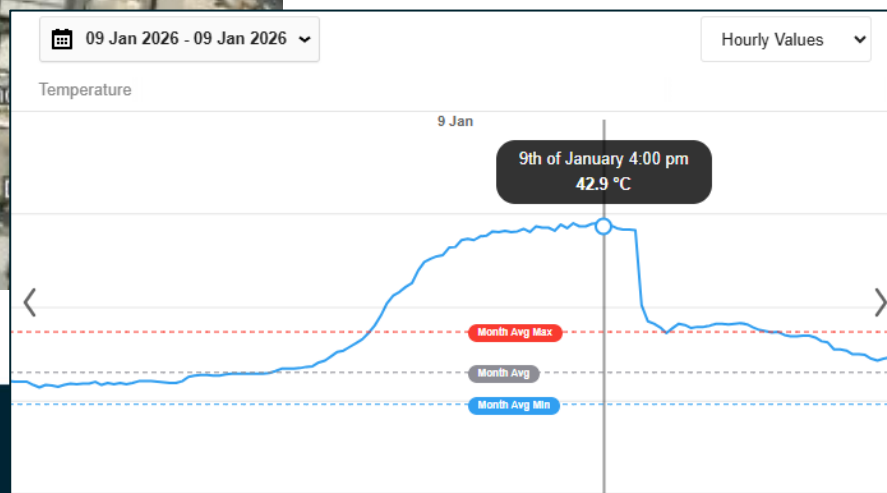
EPA reference site - Dandenong



Bureau of Meteorology Moorabbin Airport, 9 January 2026 Daily Weather Observations

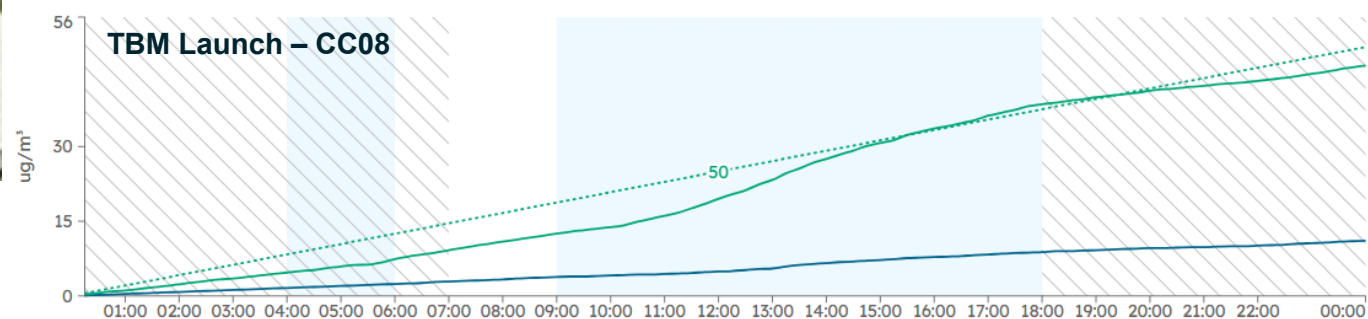
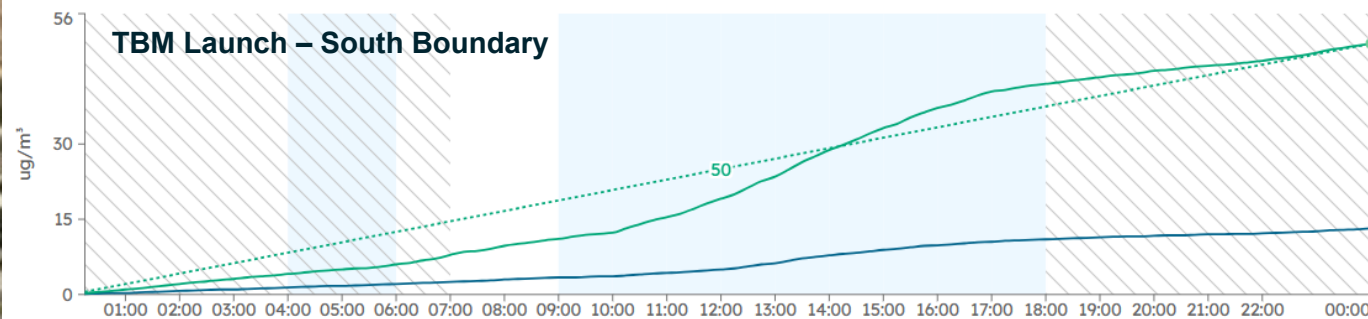
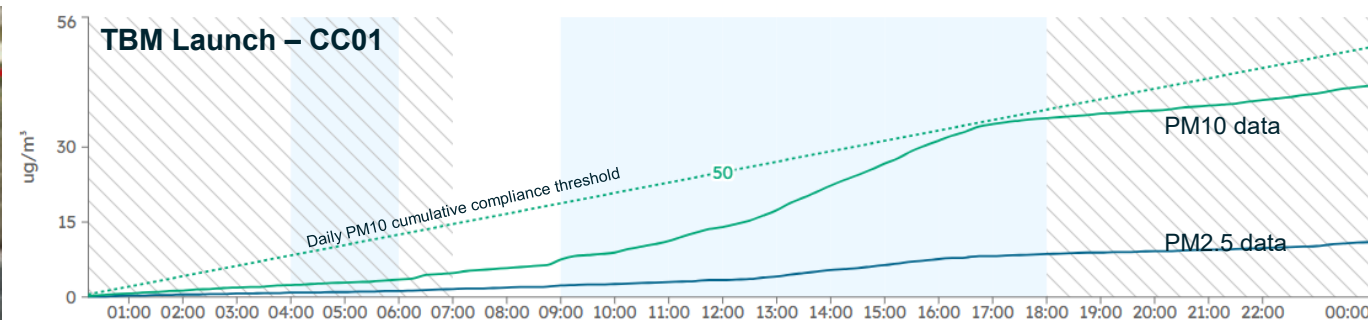
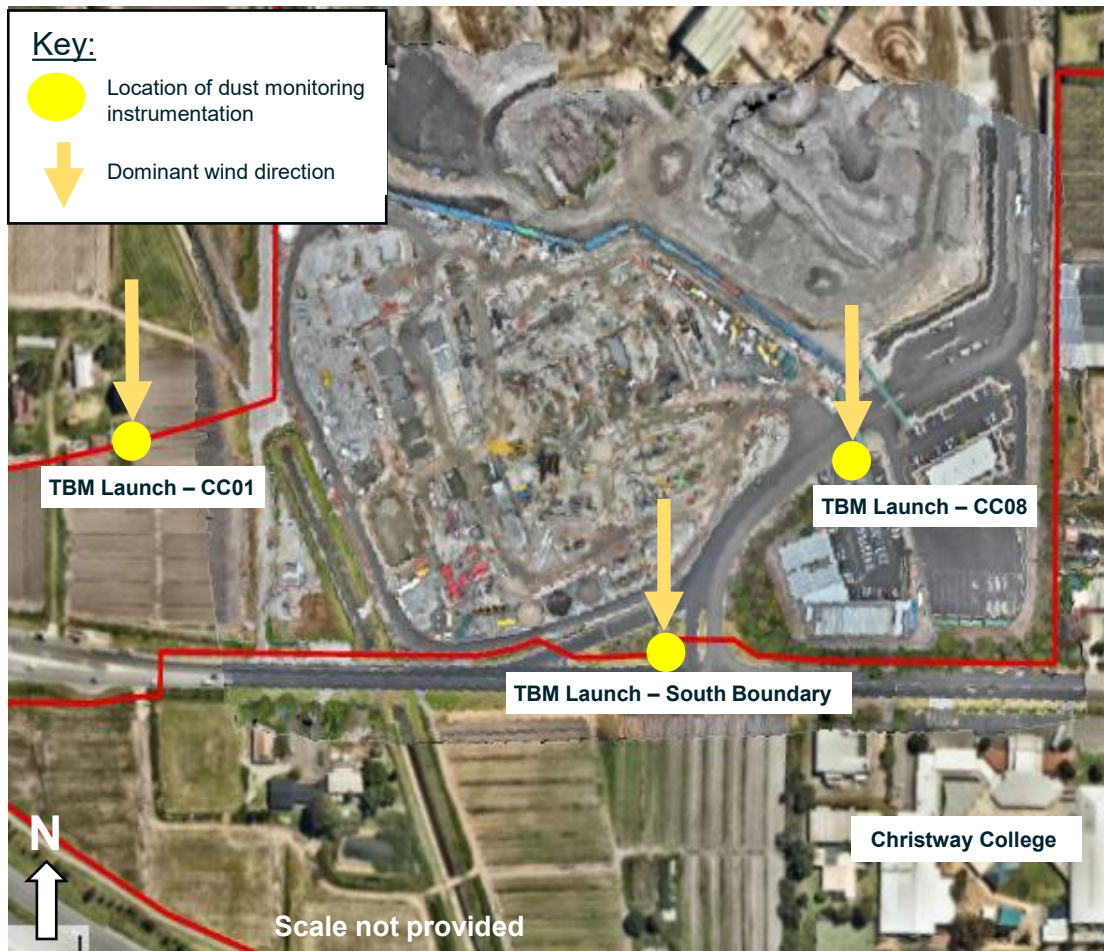
Date	Day	Temps		Rain	Evap	Sun	Max wind gust			9 am			3 pm								
		Min	Max				Dir	Spd	Time	Temp	RH	Cld	Dir	Spd	MSLP	Temp	RH	Cld	Dir	Spd	MSLP
		°C	°C	mm	mm	hours	km/h	local		°C	%	g th	km/h	hPa	°C	%	g th	km/h	hPa		
9	Th	32.1					N	41	07:57	24.4	43	7	N	30	1014.8	30.6	27	8	NNW	17	1013.6

WillyWeather Moorabbin Airport, 9 January 2026 temperature and wind plots



OFFICIAL

Dust monitoring - Friday 9 January 2026 (TBM launch site, Clarinda)



Note: there was no active construction for SRL East at the Clarinda site on 9 January 2026. Air quality monitoring results reflect the conditions seen across south east Melbourne given the extreme weather conditions on the day. Consistent with EPA Dandenong site.

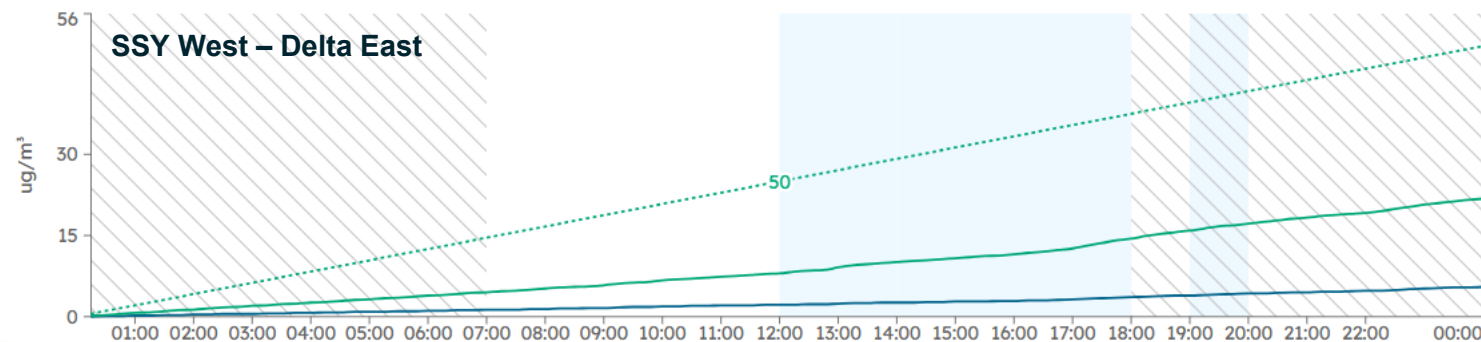
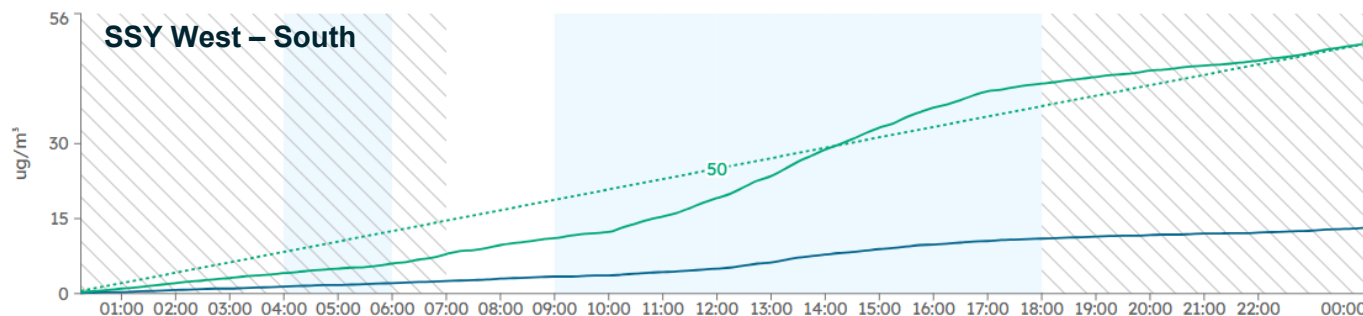
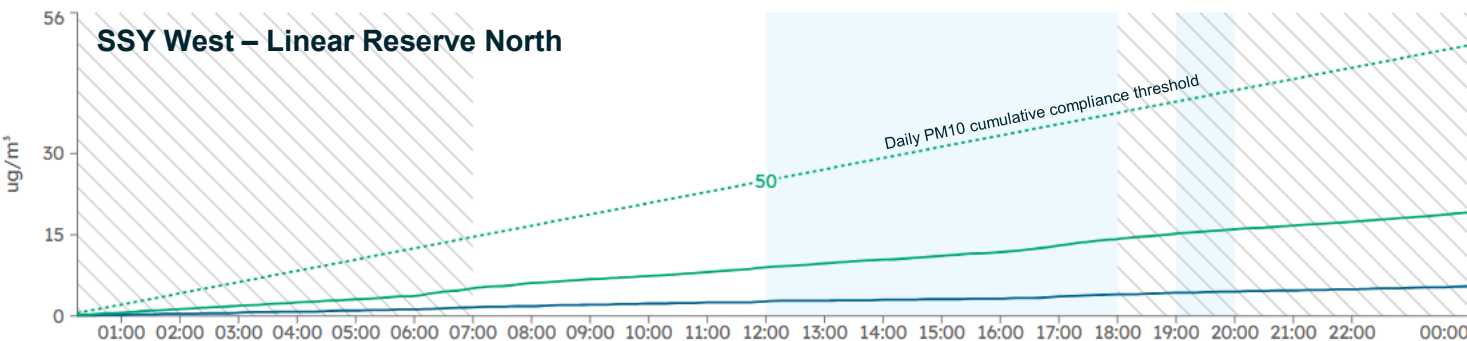
Dust monitoring - Friday 9 January 2026 (train stabling facility, Heatherton)



Dust monitoring - Friday, 9 January 2026 (train stabling facility, Heatherton)

Note:

- Dominant wind direction was North at 9am and North Northwest at 3pm.
- There was no active construction for SRL East at the train stabling facility site on 9 January 2026.
- Air quality monitoring results reflect the conditions seen across south east Melbourne given the extreme weather conditions on the day. Consistent with EPA Dandenong site.



Air quality monitoring at Heatherton and Clarinda

- From October 2025 to February 2026 there were no TARP events implemented at the Suburban Connect sites
- Ongoing mitigations are in place, including water carts, hoses and street sweeping.
- TARP events are not implemented for offsite (non-project related) sources of dust
- *TARP - Trigger Action Response Protocol*

Monitor locations – Heatherton and Clarinda



Other environmental updates

Plant screeching noise outside normal working hours

- We are aware that some machinery on site make screeching noises when moving.
- These are mobile machines that weigh up to 200t.
- These noises are common on all construction sites.
- We have reviewed all plant servicing and maintenance records.
- We are limiting plant movement to essential movements only, especially outside of hours.
- The largest machinery on site (for D-Walls) have now moved further east, away from residents.
- We understand the noise can be annoying and we have support options available.

Management of dirt and dust on Kingston Road

- Internal site roads are constructed using compacted crushed rock which provides a harder wearing surface so there is less dust generated. Internal site roads will be paved once bulk excavation works have been completed.
- Speed restrictions are applied to all vehicle movements on site to minimise dust generation.
- Internal driveway to heavy vehicle gates is concrete paved.
- Foreign Object Debris System (FODS) have been installed on the exit gate to Kingston Road to remove mud and dirt build-up on heavy vehicle tyres before leaving site.
- Water filled barriers have been installed on site to direct all heavy vehicles towards the FODS prior to exiting onto Kingston Road.
- Water carts apply a water spray to the internal road network within site and operate every shift.
- Mechanical street sweeping of Kingston Road is undertaken daily between 7am and 6pm but is influenced by traffic flow.
- Cleaning of roadside edges is currently limited due to temporary traffic barriers. Street sweeping will be able to reach the roadside edges following removal of these barriers.
- On 12 February 2026, the Victorian EPA completed an inspection of the western tunnel entrance site, including the heavy vehicle gates and Kingston Road. No actions were raised.

Break

Works update

Site context

- Suburban Connect
- Linewide Alliance

- SRL East tunnels
- SRL East train stabling facility
- WTE Western tunnel entrance
- ETE Eastern tunnel entrance
- NSF Network support facility
- Signalised pedestrian crossing



Train stabling facility

Linewide Alliance

Linewide Alliance site investigations

- From February to August 2026
- Day works from 7am – 6pm, Monday to Friday
- Site investigations to understand ground conditions. These will inform:
 - Methodology for earthworks expected from mid-2026
 - Design and construction methodology for the train stabling facility at Heatherton.



Site investigations at train stabling facility

Train stabling facility

Suburban Connect

OFFICIAL

Current works | Western tunnel entrance (WTE)

- D-Wall construction - until mid-March
- Ground improvement works - until late-March
- Western portal excavation - from April
- Acoustic shed construction – from July



Example: Metro Tunnel Acoustic Shed at ANZAC Station.



Steel cage for D-wall lowered into place at Heatherton.

All timing is subject to change.

Current works | Eastern tunnel entrance (ETE)

- Deliveries and storage of materials – from February
- Site establishment – from April
 - Earthworks
 - Drainage
 - Fencing
- Kingston Road site entrances – from April
- Kingston Road drainage works at Pine Lane intersection (DTP led) – timing TBC.



Eastern tunnel entrance site (December 2025)

All timing is subject to change.

Future works and impacts

Location	Upcoming milestones in 2026	Expected impacts	Date
Train stabling facility, Heatherton	<ul style="list-style-type: none"> Completion of D-Wall construction 	<ul style="list-style-type: none"> Current working hours up to 24 hours Monday - Saturday 	Until March 2026
	<ul style="list-style-type: none"> Commencement of WTE portal excavation Constructing tunnelling support equipment 	<ul style="list-style-type: none"> Increased earthworks and soil removal Increased heavy vehicle traffic entering and exiting site 	From April to late 2026
	<ul style="list-style-type: none"> Acoustic shed construction 	<ul style="list-style-type: none"> Potential additional evening and nighttime working hours Noise reduction achieved by acoustic shed 	From July to late 2026
Kingston Road	<ul style="list-style-type: none"> Utility works and connections into site Fencing and hoarding installation 	<ul style="list-style-type: none"> Traffic barriers and changed traffic conditions near the train stabling facility Lane and road closures at times Increased heavy vehicle traffic entering and exiting site 	Ongoing in 2026

All timing is subject to change.

TBM launch site, Clarinda

Suburban Connect

Current works | TBM launch site

- Excavating tunnel boring machine launch shafts – until September
- Constructing acoustic sheds – until September
- Tunnelling preparation and equipment delivery - ongoing



Clarinda worksite (December 2025)

All timing is subject to change.

Future works and impacts

Location	Upcoming milestones in 2026	Expected impacts	Date
TBM launch site, Clarinda	<ul style="list-style-type: none"> Completion of TBM launch shaft excavation Acoustic shed construction 	<ul style="list-style-type: none"> Ongoing works up to 24 hours Monday – Sunday Increased earthworks and soil removal Increased heavy vehicle traffic entering and exiting site 	Until September 2026
	<ul style="list-style-type: none"> TBM component delivery TBM assembly and launch 	<ul style="list-style-type: none"> Increased heavy vehicle traffic entering and exiting site 	Mid to late 2026
Kingston Road	<ul style="list-style-type: none"> Utility works and connections into site TBM delivery enabling works 	<ul style="list-style-type: none"> Traffic barriers and changed traffic conditions near TBM launch site Lane and road closures at times Increased heavy vehicle traffic entering and exiting site 	Ongoing in 2026

All timing is subject to change.

Approach to meetings in 2026

Updated Terms of Reference

- The Terms of Reference (ToR) have been updated and will be circulated to all members post meeting
- Purpose of CRG:
 - Provides a forum for meaningful engagement between the community, SRLA and its contractors
 - Focused on improving SRLA and its contractors' understanding of community values, local conditions, priorities, concerns and preferred outcomes.
- The updated ToR also covers:
 - Role
 - Membership and appointments
 - Code of Conduct
 - General protocols



Terms of Reference updates - 2026



Role

- Act as an advisory group, project decisions are made by SRLA and its contractors
- Inform SRLA of community concerns or questions
- Provide timely feedback
- Discuss matters related to SRL requiring local stakeholder or community input
- Keep the local community updated on SRL works and progress
- Help to resolve community concerns related to the project
- Provide construction suggestions on works mitigations where possible



Membership and appointments

- Membership is voluntary
- Members reflect a broad cross-section from the Heatherton and surrounding community
- Membership is reviewed periodically by SRLA



Code of Conduct

- Act in a respectful and constructive manner
- Represent community and/or organisation interests
- Support two-way communication between SRLA and its contractors, and the community
- Advise of potential or actual conflicts of interest
- Maintain confidentiality of sensitive information
- Not authorised to speak to the media on behalf of the CRG
- Not post meeting content images on social media without prior approval from SRLA



General protocols

- Meetings to occur bi-monthly or five times a year (excl. Jan and Dec)
- Agenda requests expected at least 21 days prior
- Questions encouraged in advance and may be taken on notice during a meeting when this does not occur
- External speakers may be invited on relevant topics / issues
- Proxies for community representatives / groups are not permitted

Community Reference Group reset for 2026 - discussion

CRG has been meeting since March 2023.

- What is working well?
- What would you like to see more of?
- What other feedback do you have?

Discussion areas:

- The Suburban Connect team has made changes to how: environmental monitoring data, communications and engagement data, and works are presented in this meeting – do these updates better meet member needs?
- Are there key agenda items you'd like to see in 2026?
- Sharing agenda requests or questions ahead of time will help SRLA and its contractors tailor content to better meet the needs of the group.

Other business

Upcoming meetings

Tuesday 28 April, 6pm-8pm

Tuesday 23 June, 6pm-8pm

Tuesday 18 August, 6pm-8pm

Final meeting date for 2026 to be confirmed.

Locations of meetings will be confirmed closer to the date.

Questions