



SOUTH YARRA COMMUNITY REFERENCE GROUP

MEETING # 2

TUESDAY 6 FEBRUARY 2018, Punt Hill Apartments





JOHN HOLLAND EARLY WORKS PROGRAM UPDATE

EASTERN PORTAL ONGOING WORKS

- Gas service works in Osborne Street – expected completion mid-March 2018
- Gas Service truncation around William Street Bridge, four days of work – expected completion mid-March 2018
- Demolition works at 3-5 Chambers Street – timing TBC



CROSS YARRA PARTNERSHIP PROGRAM UPDATE

AGENDA

1. Delivery Program
2. Upcoming Night Works
3. Development Plan
4. St Kilda Road and Grattan Street changes



CYP DELIVERY PROGRAM – EASTERN PORTAL

- Site establishment May 2018
- Early works start June 2018
- Main works start July 2018
- Shaft construction including all excavation mid 2018 to mid 2019
- TBM extraction 2020
- Structure completed 2021
- Tunnel fit out and rail completed 2022
- Testing and commissioning completed 2026

UPCOMING NIGHT WORKS

What to be aware of

- Access to site from Osborne Street and South Yarra Siding Reserve
- Temporary site on the Osborne Street reserve setup during the day
- Temporary fencing - not permanent hoarding
- Medium level of noise during the works. Noisiest works will take place intermittently for up to 3 hours during the night
- Noise blankets will be used on fencing to minimise disruption as much as possible





UPCOMING NIGHT WORKS

When

- 9pm – 7am Sunday 25 February and Monday 26 February 2018
- After last train, before first train (Set up prior)

What we are doing

- Service investigations within the rail corridor off Osborne Street (Sandringham Line)
- Confirming the location and extent of existing drainage, communication and electrical utilities
- Activities include:
 - Non-destructive digging (NDD) within the eastern side rail embankment
 - Survey of utilities
 - Use of an elevated work platform, NDD truck, temporary lighting and some hand tools

DEVELOPMENT PLAN OVERVIEW

Development Plan area

- Osborne Street reserve
- Does not include South Yarra Siding Reserve

Timing

- Consultation in late April 2018

Scope

- Restoring Osborne Street reserve
- Support structures



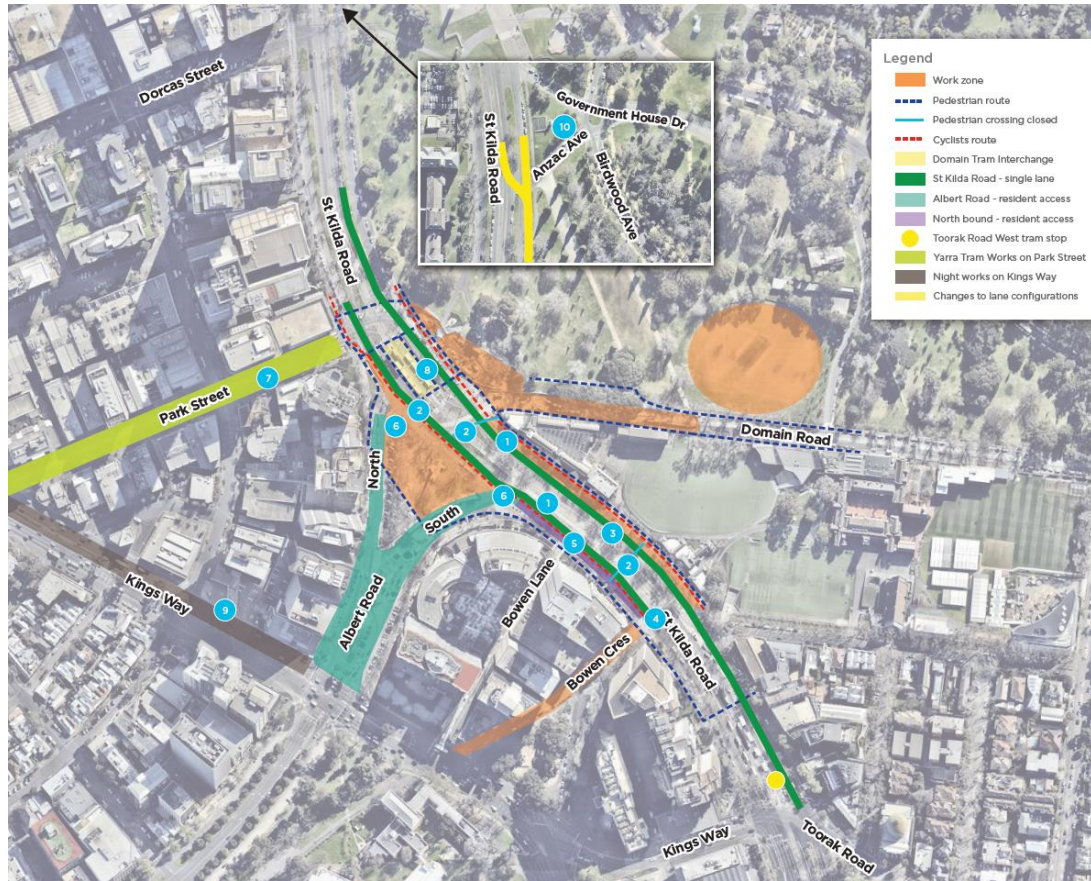
Indicative Only



ST KILDA ROAD CHANGES

- From mid-February, St Kilda Road will be reduced to one lane in both directions between Kings Way/Toorak Road West and Dorcas Street for up to four years
- Motorists should allow up to 15 minutes extra travel time if traveling via this part of St Kilda Road
- The new Anzac Station will incorporate a direct passenger interchange to a new tram superstop at surface level
- Road changes allow the project team to build the new Anzac Station directly beneath St Kilda Road
- Pedestrian and cycling access will be maintained along St Kilda Road while Metro Tunnel works are underway

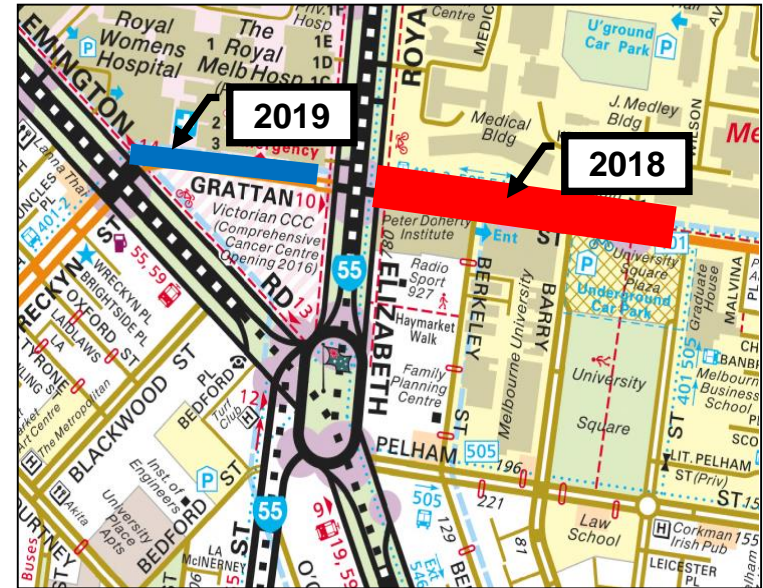
The following changes will be progressively delivered from mid-January to April 2018 in the lead up to the major tram works, subject to planning approvals.



- 1 St Kilda Road**
 - Reduced to one lane in each direction between Dorcas Street and Toorak Road West
- 2 Pedestrian crossing closures**
 - St Kilda Road pedestrian crossing closed at Domain Road. Crossing via Park Street
 - Western pedestrian access to Domain Tram Interchange via crossing at Park Street
 - Bowen Lane tram stop pedestrian access closed.
- 3 Tram Stop**
 - Bowen Lane tram stop closed from mid-January
- 4 Bowen Crescent**
 - Left-in/left-out access off St Kilda Road service lane
- 5 Bowen Lane**
 - Left-in/left-out access off St Kilda Road service lane
- 6 Albert Road**
 - No exit to St Kilda Road, exit via Kings Way
 - Left access from St Kilda Road only via Albert Road South
- 7 Park Street**
 - Full closure to traffic and trams between St Kilda Road and Kings Way from 2-7 February for Yarra Trams tram stop works
 - Buses replacing trams during full closure
 - Traffic management in place at other times between mid-January and mid-February.
- 8 Domain Interchange**
 - Domain Interchange will remain open until the major tram works in April 2018
- 9 Kings Way**
 - Night works on Kings Way city bound north of Albert Road from mid-late January to improve traffic flow while St Kilda Road is reduced to one lane in each direction
- 10 St Kilda Rd near Government House Drive**
 - The southbound St Kilda Rd lane configuration adjacent to Government House Drive will be modified to encourage motorists into the service lane, in preparation for future construction stages.

GRATTAN STREET CHANGES

- Works on Grattan Street for up to 5 years to build Parkville Station
- From February 2018, Grattan Street will be closed between Royal Parade and Leicester Street
- From January 2019, Grattan Street will be closed westbound between Flemington Road and Royal Parade
- Pedestrian accessibility will be maintained
- Cyclist and vehicle diversions where required





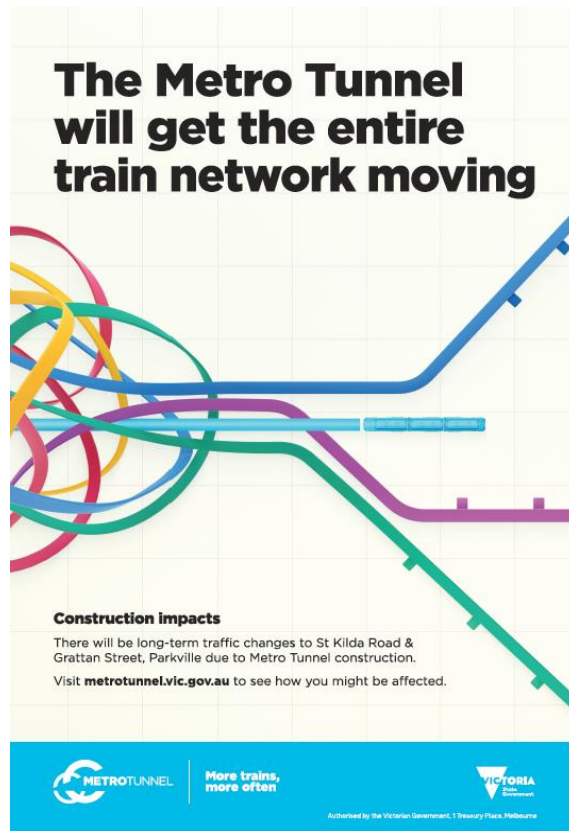
METRO TUNNEL PUBLIC CAMPAIGN

PUBLIC COMMUNICATIONS CAMPAIGN

- Advertising campaign (TVC, radio, print, outdoor)
- VMS, signage, wayfinding
- Briefings with key stakeholders, institutions, schools, residents, businesses
- Travel Demand Management
- Pop ups on St Kilda Road, Grattan Street, Uni Orientation Day
- Metro Tunnel eNews to subscribers
- Works notifications – specific to local stakeholders
- Social media and website updates (inc on VicRoads, PTV, Yarra Trams' channels)
- Coordination with major events i.e. Grand Prix



POSTERS AT KEY LOCATIONS



A poster with a light green grid background. At the top, the headline reads "The Metro Tunnel will get the entire train network moving" in bold black text. Below the headline is a graphic of several overlapping, colorful lines (red, yellow, green, blue, purple) that represent train routes. Some lines are straight, while others are curved or have small rectangular markers. At the bottom left, there is a section titled "Construction impacts" in bold, followed by two lines of text: "There will be long-term traffic changes to St Kilda Road & Grattan Street, Parkville due to Metro Tunnel construction." and "Visit metrotunnel.vic.gov.au to see how you might be affected." The bottom of the poster features a blue footer with the METROTUNNEL logo on the left, the slogan "More trains, more often" in the center, and the Victorian Government logo on the right. Below the government logo, it says "Authorised by the Victorian Government, 1 Treasury Place, Melbourne".

The Metro Tunnel will get the entire train network moving

Construction impacts

There will be long-term traffic changes to St Kilda Road & Grattan Street, Parkville due to Metro Tunnel construction.

Visit metrotunnel.vic.gov.au to see how you might be affected.

 **More trains, more often** 

Authorised by the Victorian Government, 1 Treasury Place, Melbourne



RAIL INFRASTRUCTURE ALLIANCE UPDATE

INDICATIVE MILESTONES

Rail Infrastructure Alliance anticipated timeframes:

- Sept 2017 – Expression of Interest received
- Nov 2017 – Procurement package out to market
- Mid 2018 – Preferred contractor
- Mid-Late 2018 – Contract awarded
- Early 2019 – Major work begins in South Yarra
- Late 2021 – Early 2022 – Alliance Portal works complete

WORK PACKAGES



EARLY WORKS

- Utility services relocation, demolition, CBD access shafts and other preparatory works (Managing Contractor)
- Tram diversion works (Franchisee Works)
- Construction power (Utility Service Provider)

TUNNEL AND STATIONS (AVAILABILITY PPP)

- 9km twin tunnels and five underground stations including fit-out
- Mechanical and electrical systems
- Tunnel and stations maintenance
- Rail systems installation within the tunnel

RAIL INFRASTRUCTURE (ALLIANCE)

- Eastern and Western Portals
- Integration of portal with existing rail networks (civil track, overhead line equipment, signalling)
- Eastern and Western Turnback
- Wider network enhancements

RAIL SYSTEMS (ALLIANCE)

- High capacity signalling
- Conventional signalling upgrades and modifications
- Communication systems
- Platform screen doors
- Train control and operational control systems
- Systems integration and end-to-end commissioning

PLANNING PROCESS

- MMRA will be seeking feedback from Councils, stakeholders and broader community along the rail corridor
- The draft planning documents will be publicly available and the community will be provided the opportunity to comment
- Comments/Feedback received will be provided to the Minister for Planning for consideration as part of the planning process
- Community and stakeholders will be notified about the planning process via the following channels:
 - Project website and social media
 - Letter box drops and eNews
 - Briefings



QUESTIONS?