



TOWN HALL STATION COMMUNITY REFERENCE GROUP

CROSS YARRA PARTNERSHIP
FRIDAY 24 APRIL 2020





TOWN HALL STATION COMMUNITY REFERENCE GROUP

Jodie Barrington, CBD Precinct Lead, CYP D&C

Blythe Chidgey, Town Hall Station Stakeholder Engagement Manager, CYP D&C



Construction partner:



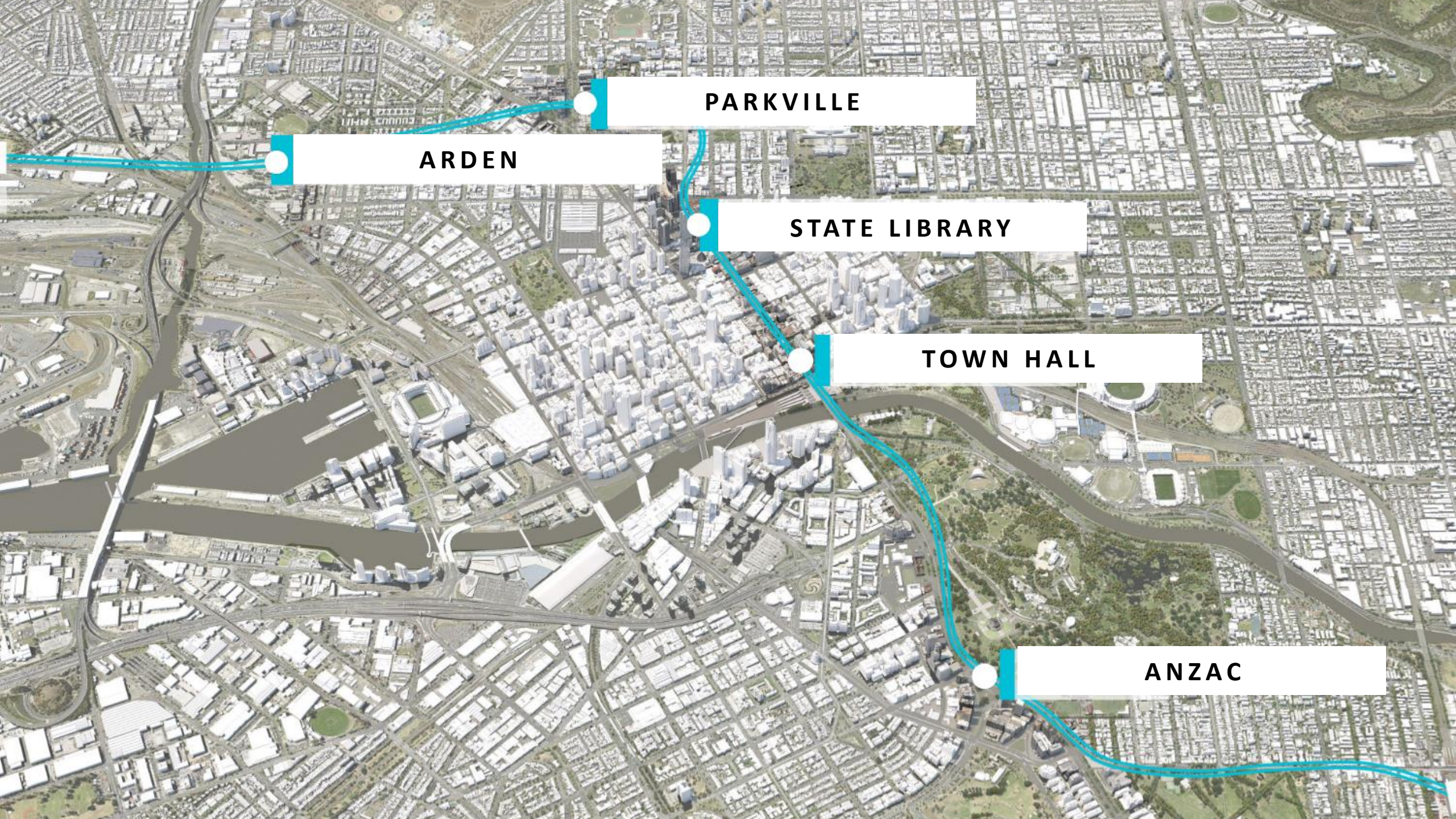
AGENDA



1. Project overview
2. Town Hall Station Update
3. Traffic update

PROJECT OVERVIEW





PARKVILLE

ARDEN

STATE LIBRARY

TOWN HALL

ANZAC

ARDEN



The tunnel boring machines (TBMs) Joan and Meg broke through to complete the journey from Arden Station to the tunnel's western entrance in Kensington.

The TBMs have travelled 1.2 kilometres and installed 4,200 curved concrete segments to create 700 rings lining the walls of the twin tunnels.

<https://youtu.be/-cSN3ockOqE>

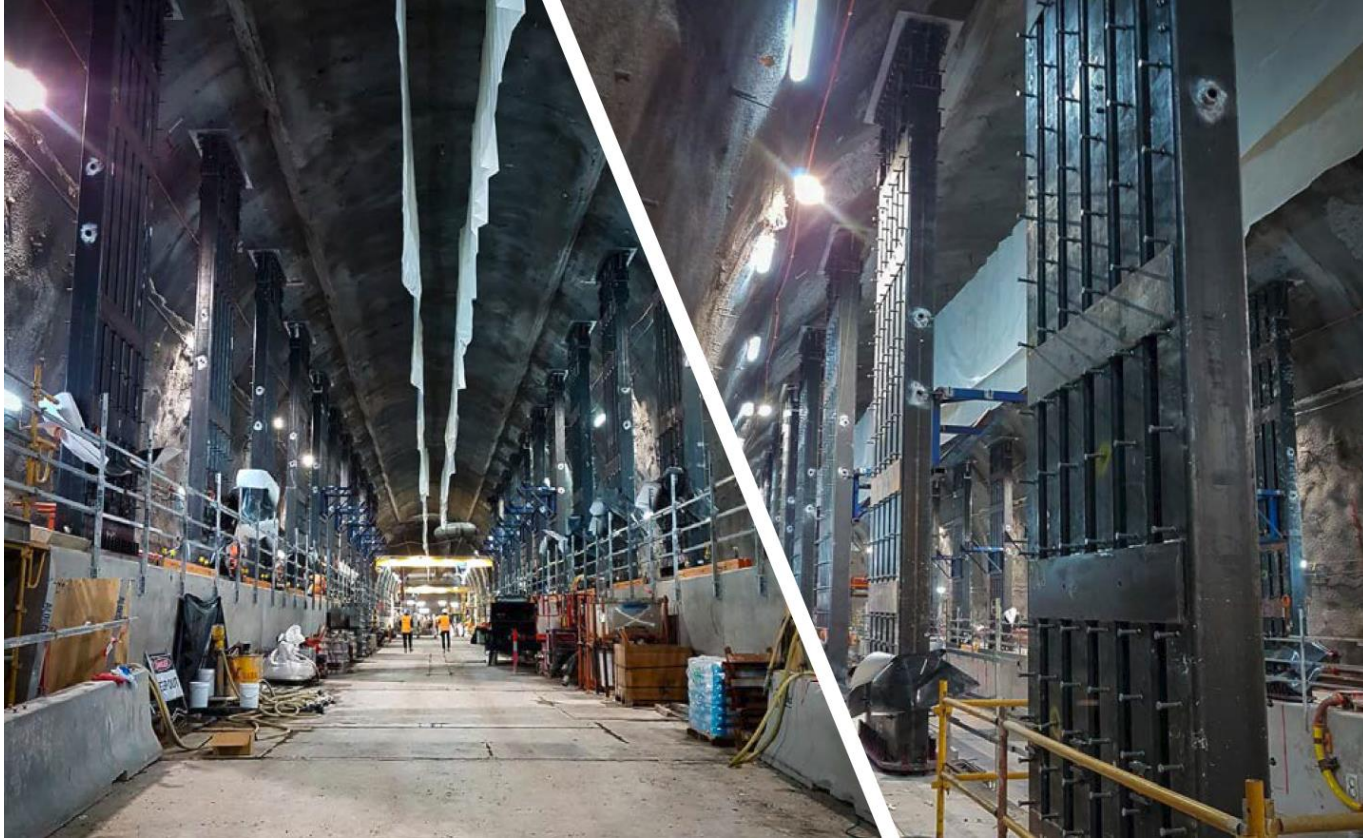
PARKVILLE

Station box excavation is now complete at Parkville – with more than 200,000 cubic metres of excavated material removed.

The station box measures 270 metres long, 30 metres wide and is 32 metres deep.



STATE LIBRARY



Permanent structures are being built deep underground as the State Library Station platforms start taking shape.

Two meter high permanent concrete structures have been installed within the station's central cavern. These will support the future station platform and 50 steel columns that will support the span of the cavern as it's widened into its trinocular design

ANZAC

Following the recent completion of the Anzac Station D-walls, the tunnelling team has completed the successful energisation of the project's third TBM Millie. Energisation involved pumping 11,000 volts from the purpose-built substation to the TBM to power it for the first time. Testing and commissioning of the TBM will continue this month as the team prepares for Millie's launch.



ROADHEADER TUNNELLING



CITY SQUARE

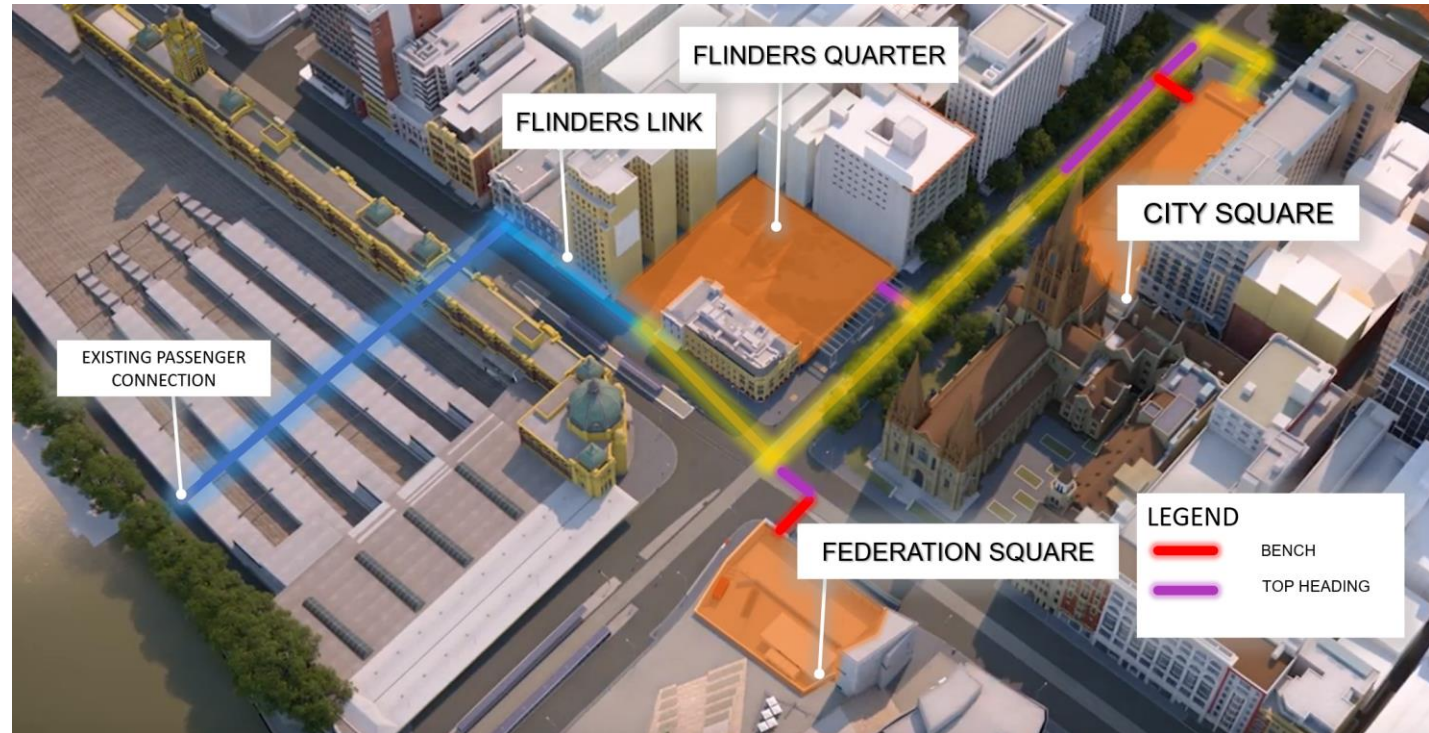
- Completed main cavern heading north
- Completed over 36 metres heading south

FEDERATION SQUARE

- Completed 19 metres of the Federation Square passenger adit

FLINDERS QUARTER

- Completed over 29 metres of the Flinders Quarter adit



TOWN HALL STATION UPDATE



FLINDERS QUARTER



FLINDERS QUARTER PILING COMPLETE

182 perimeter piles complete

- Totalling 5,000 lineal metres

57 Plunge columns complete

- 148 individual steel pieces



Flinders Quarter team celebrating the completion of piling (prior to social distancing requirements)

FLINDERS QUARTER – SHAFT A



Roadheader 'Sharon'

Flinders Quarter tunnelling and excavation

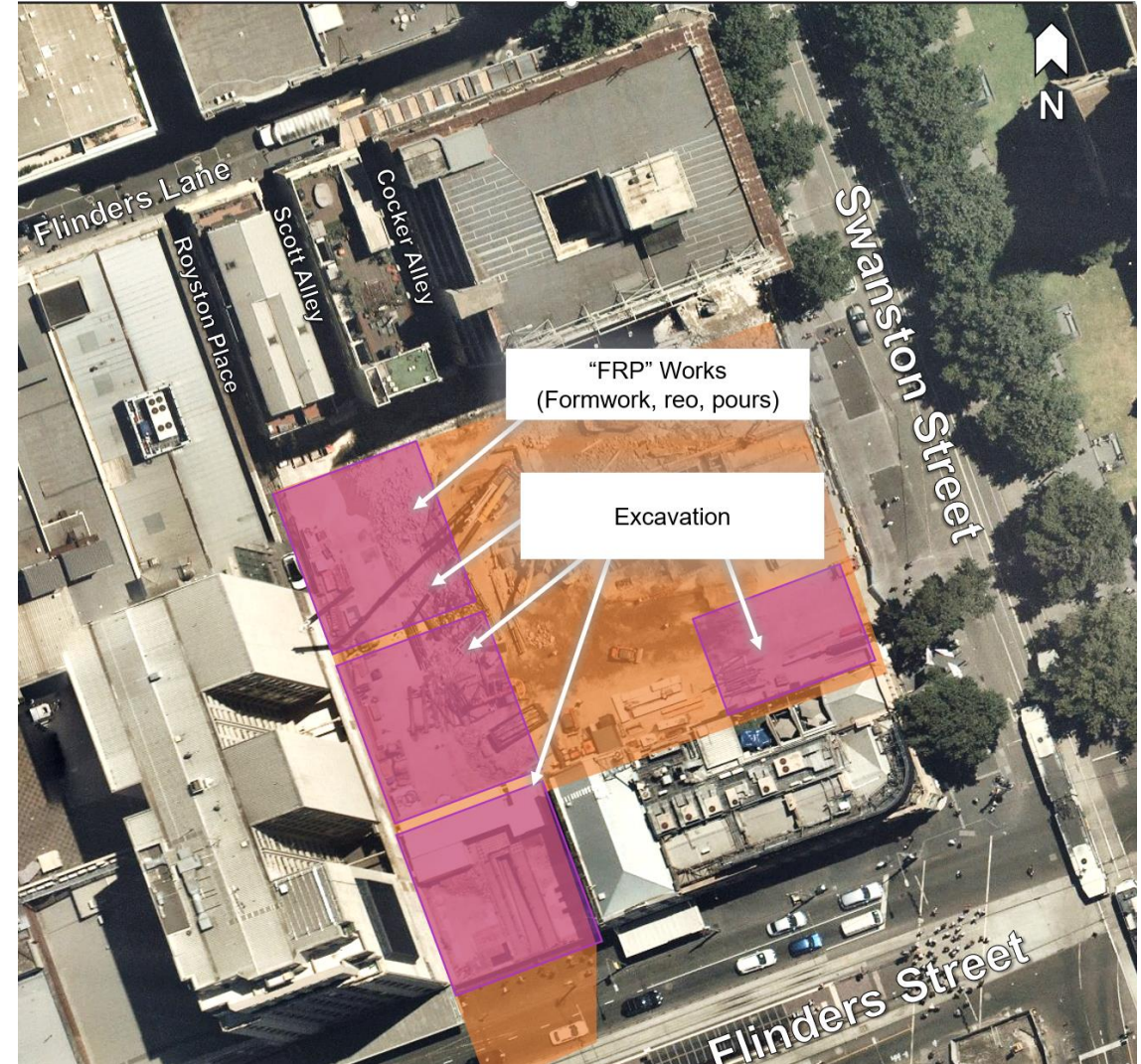
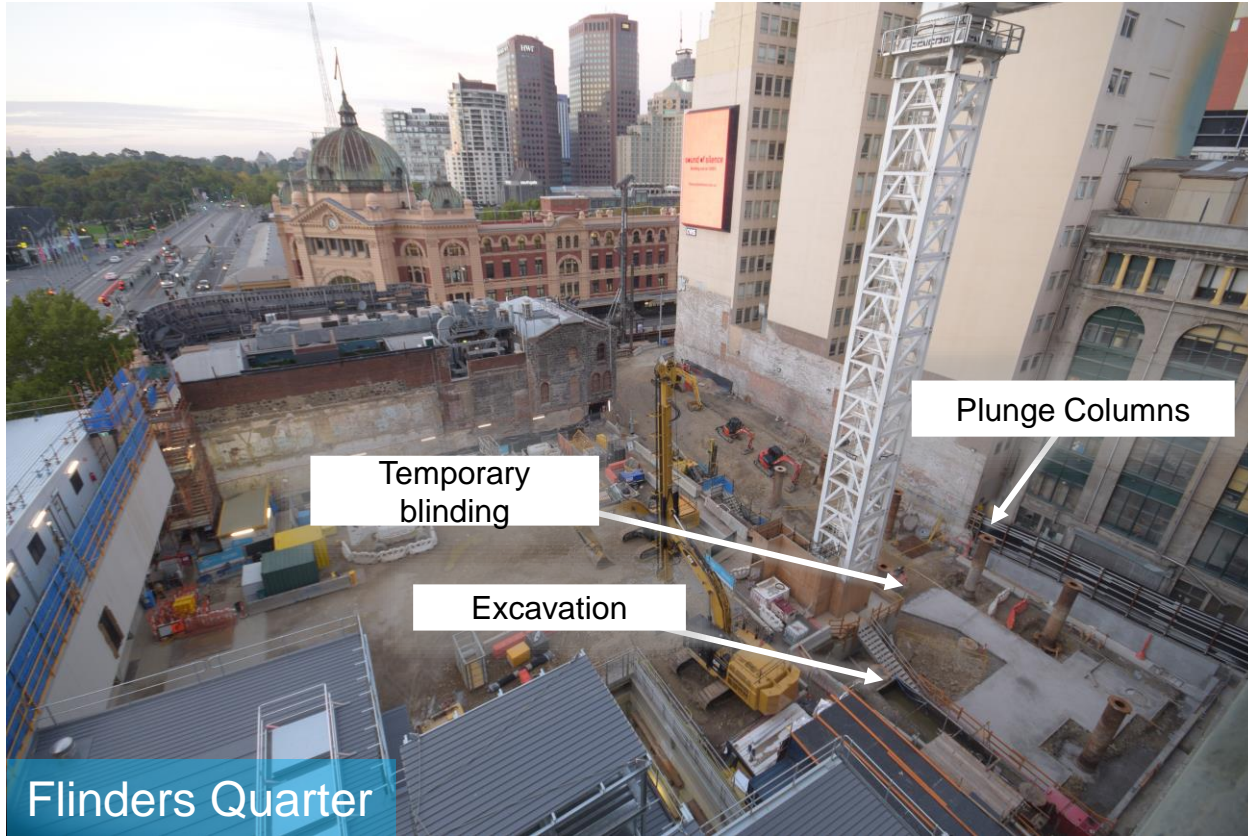
- 24 hours, Monday to Sunday

Activity	Apr	May	Jun	Jul	Aug	Sep
Roadheader tunnelling						

Breakthrough to central cavern



FLINDERS QUARTER- SHAFT B



FLINDERS QUARTER- SHAFT B

Activity	Apr	May	Jun	Jul	Aug	Sep
Excavation	[Timeline bar]					
Top down construction	[Timeline bar with start dot in Apr]					

FLINDERS QUARTER – OUT OF HOURS WORKS

Deliveries (ongoing)

- Monday to Saturdays, 5am to 7am
- Monday to Friday, 6pm to 10pm

Tunnel excavation and spoil muck out

- Monday to Saturdays, 7am to 10pm

Formwork installation (Shaft B)

- Monday to Friday, 6pm to 10pm

Piling rig demobilisation (Shaft B)

- Thursday 7 May, 1am to 5am

Tower Crane shroud installation

Mobile crane mobilisation and assembly works

- From 5pm to 12am on Friday 24 April

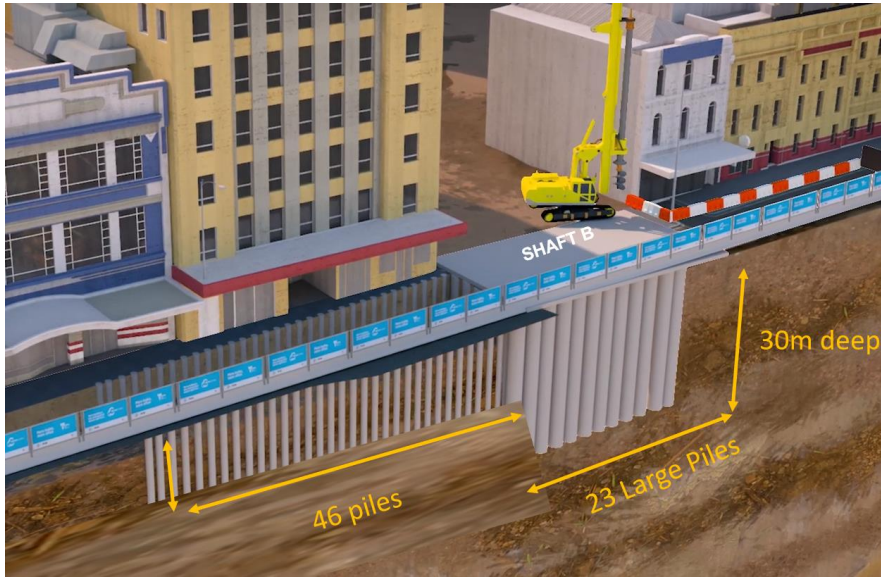
Tower crane modification works and mobile crane demobilisation

- From 9am to 12am on Sunday 26 April
- From 5pm to 12am on Tuesday 28 April.



FLINDERS LINK

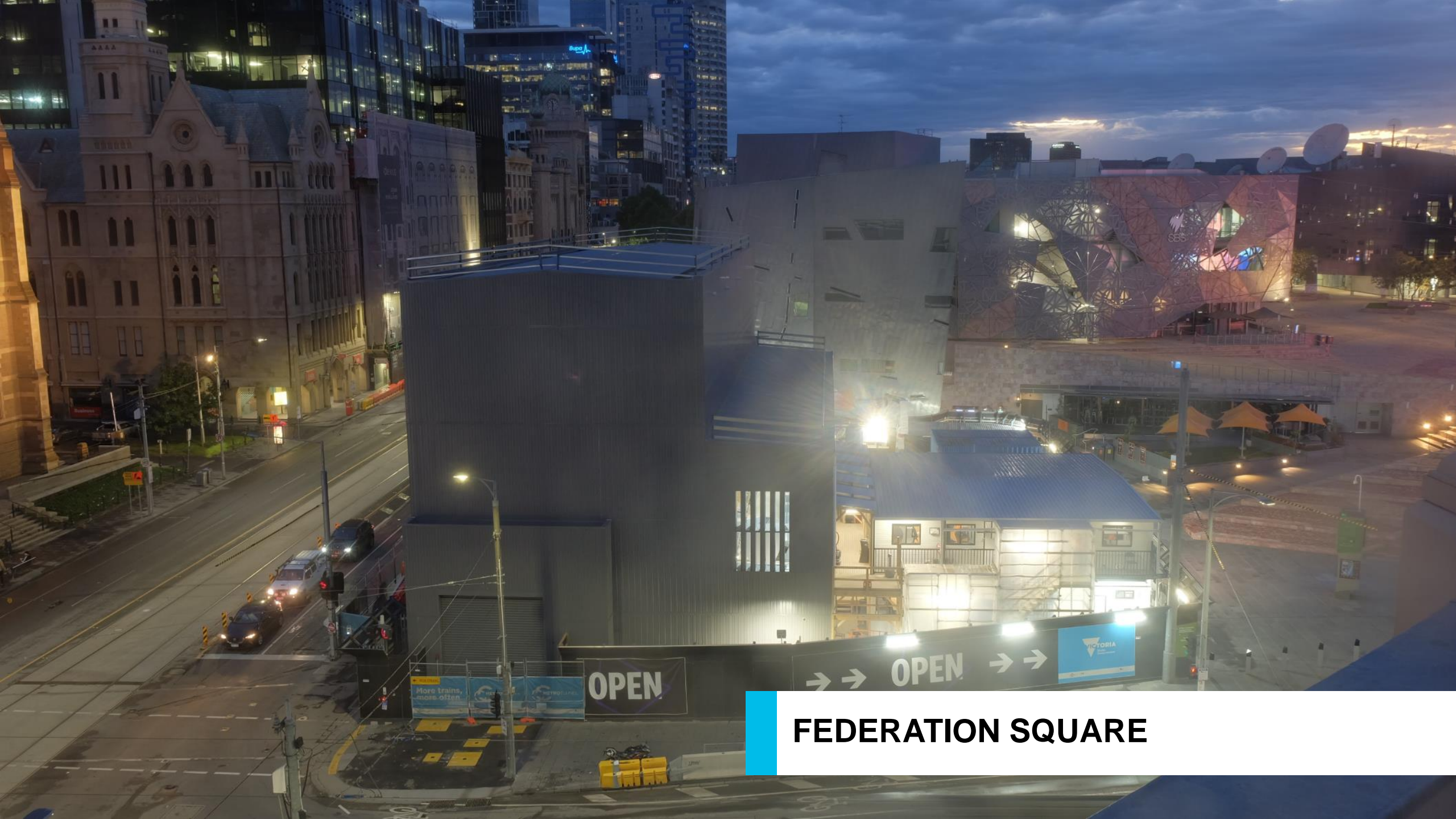
FLINDERS LINK WORKS UPDATE



Activity	Apr	May	Jun	Jul	Aug	Sep
Piling		●-----●				
Excavation			●-----●			
Service relocation works	-----●					

26 Small piles remaining

Complete 24 April



OPEN

→ → OPEN → →



FEDERATION SQUARE

FEDERATION SQUARE WORKS UPDATE



Federation Square tunnelling and excavation

- 24 hours, Monday to Sunday

Activity	Apr	May	Jun	Jul	Aug	Sep
Excavation						
Roadheader tunnelling						



CITY SQUARE

CITY SQUARE WORKS UPDATE

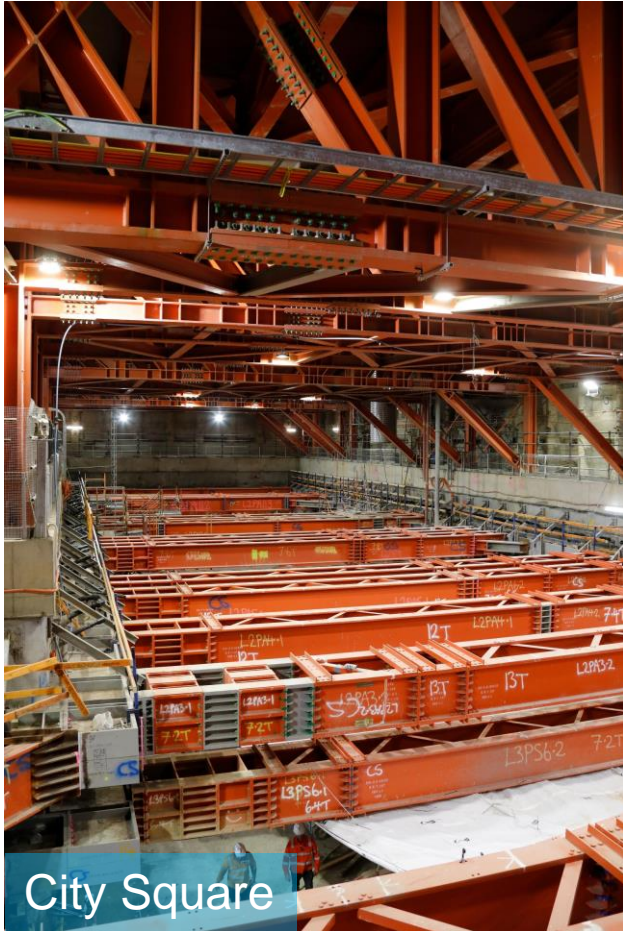


City Square tunnelling and excavation

- 24 hours, Monday to Sunday

Activity	Apr	May	Jun	Jul	Aug	Sep
Shaft excavation	●					
Roadheader Tunnelling	—					
Strutting	—●					

CITY SQUARE STRUTTING



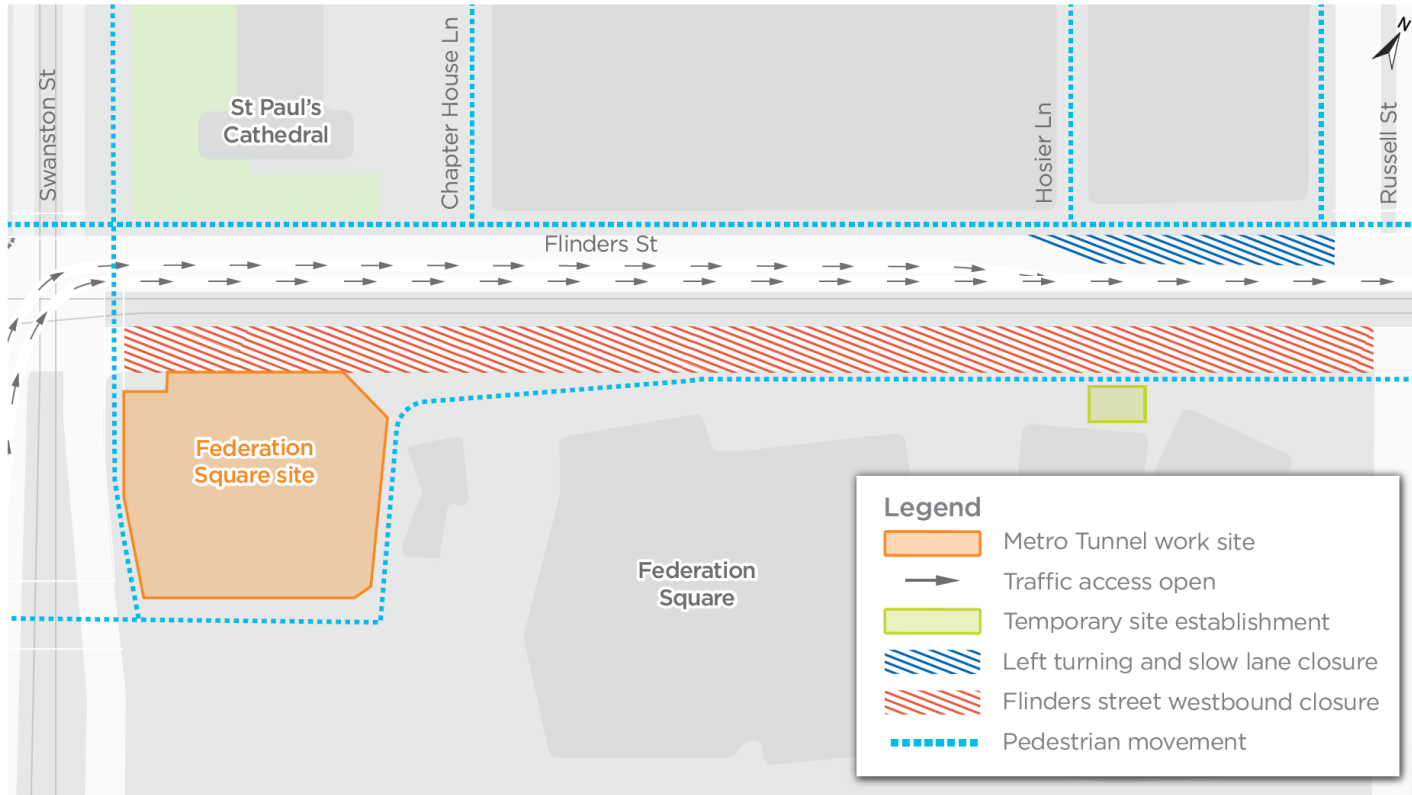
Next two levels of struts underway at City Square

- Over 3,600 tonnes of steel struts will be installed within the shaft

TRAFFIC UPDATE



TEMPORARY TRAFFIC CHANGES FLINDERS STREET



Indicative only

Flinders Street, eastbound lane closures between Swanston and Russell streets (one lane will remain open) – Day closures

- 7am to 5pm, Sunday to Friday

Flinders Street, westbound lane closures between Swanston and Russell streets (full westbound closure)- Night closures

- 9pm to 5am, Sunday to Friday

QUESTIONS?

