



DOMAIN COMMUNITY REFERENCE GROUP

Meeting #26

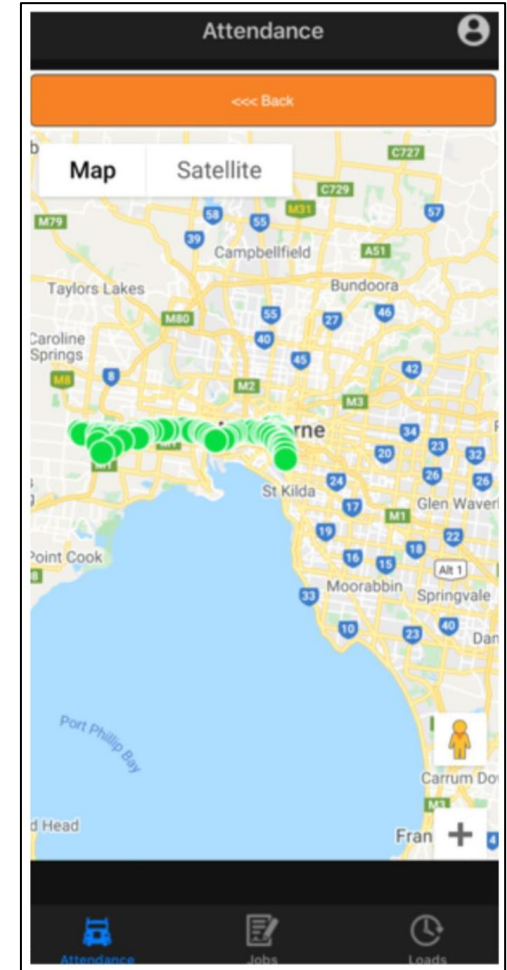
Wednesday 28 October, Online Meeting



TRUCK COMPLIANCE

TRUCK COMPLIANCE

- Trucks carrying spoil are monitored for compliance
- Current GPS tracking system can monitor driver behaviour through the app
- CYP is provided a weekly compliance report across the project, including corrective actions taken
- Any concerns on driver behaviour should be reported to 1800 105 105

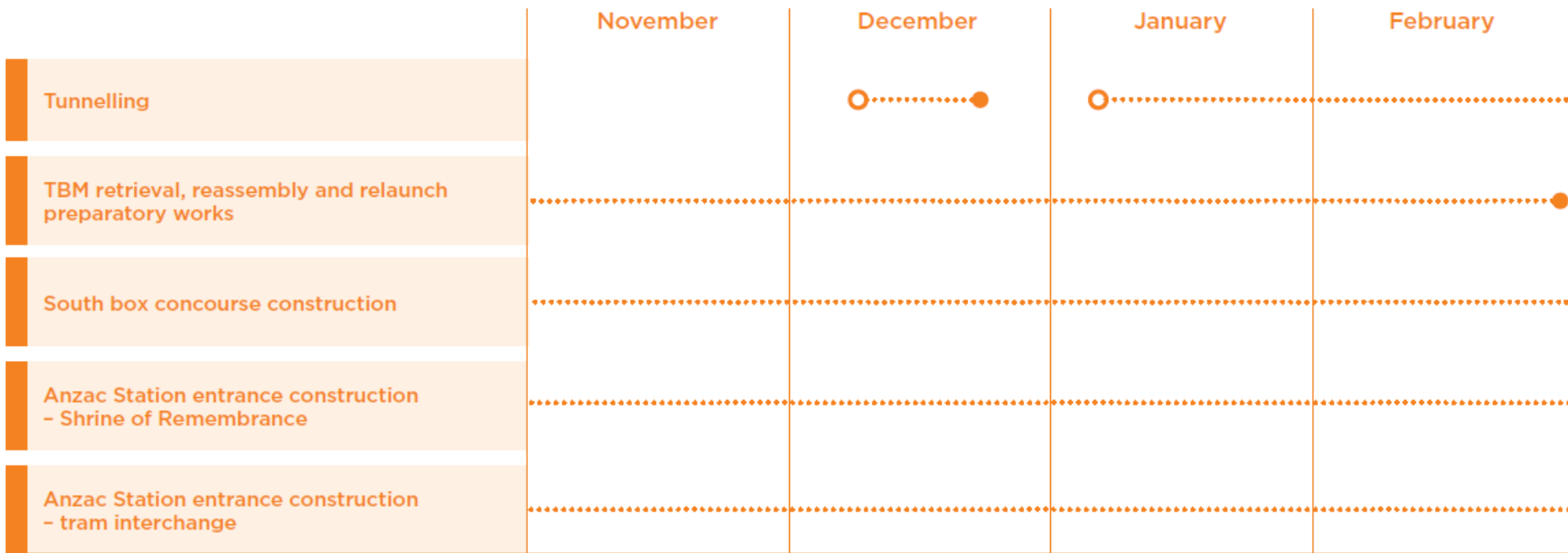


All trucks on site in Melbourne



WORKS UPDATE

ANZAC STATION PROGRAM



All dates current at the time of publication, however are subject to change.



TUNNELLING UPDATE

- In an exciting milestone for the Project, tunnelling between Domain and South Yarra is now complete
- TBM Millie completed her section of eastbound Metro Tunnel in mid-September
- TBM Alice completed her section of westbound tunnel in early October
- Over approximately five months the two TBMs built 3.4km of tunnel



TBM Millie prior to the cutterhead lift

TBM MILLIE BREAKTHROUGH



TBM ALICE BREAKTHROUGH





METROTUNNEL



**TBM Breakthrough
South
October**

TBM RETRIEVAL UPDATE

- TBM parts are now arriving back to Domain for reassembly
- So far, 16/20 oversized TBM parts have been extracted and transported between 1am – 5am from South Yarra
- All four remaining oversized deliveries are parts from TBM Alice
- The team have commenced pulling the gantry pieces back through the completed eastbound tunnel
- Underground retrieval works for both machines are ongoing
- The TBM team are aiming to be ready for relaunch in December 2020



TBM Millie's cutterhead lift

ANZAC STATION UPDATE

SOUTH BOX CONSTRUCTION

- The first section of concourse slab has been constructed in the south box
- Weight restrictions due to the live tunnels beneath mean the concourse must be constructed in 10 separate sections
- Each section will be progressively excavated prior to that section of concrete slab being constructed
- Formwork, steel reinforcements and concrete pours will be repeated until mid-2021 to complete the slab



The first concourse slab pour earlier in October

STATION ENTRANCE – SHRINE OF REMEMBRANCE

- The 8m excavation to base slab level and associated pile breakouts are almost complete
- FRP, mechanical, electrical and plumbing works to construct the base slab will commence in November
- The vertical wall and column will then be constructed, followed by the completion of the roof slab



The excavation and completed section of roof slab

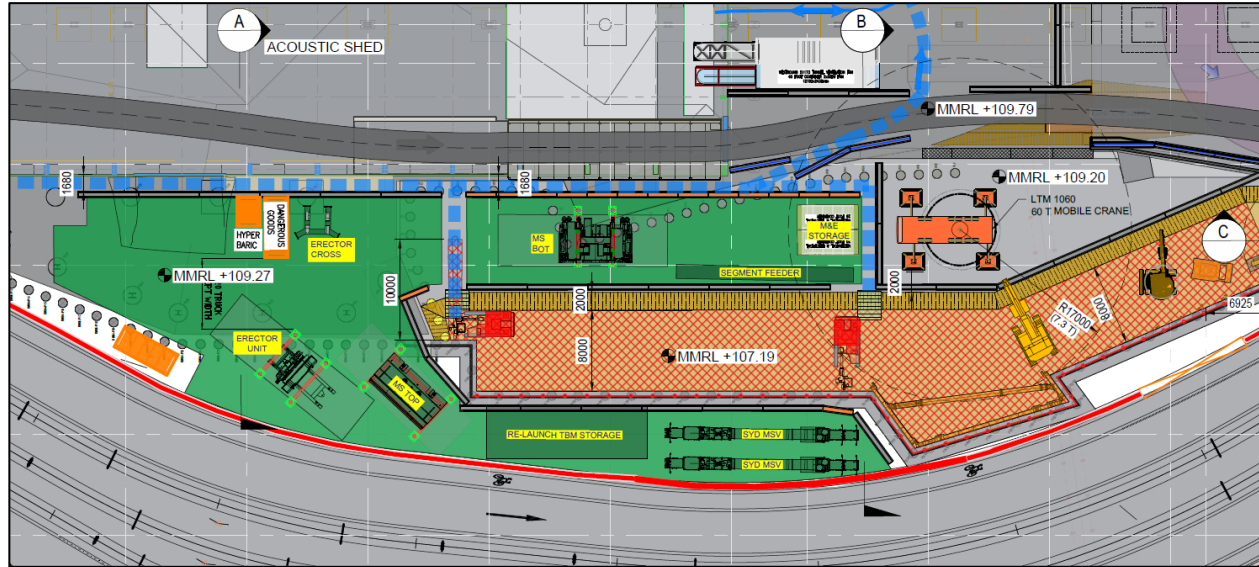
STATION ENTRANCE – TRAM INTERCHANGE

- The initial excavation of the future tram interchange is underway
- Ground anchors and strutting will be installed in November to provide support for the main excavation
- Main excavation will commence in late November and will involve demolition of temporary piles



The initial excavation underway

TRAM INTERCHANGE – INITIAL EXCAVATION



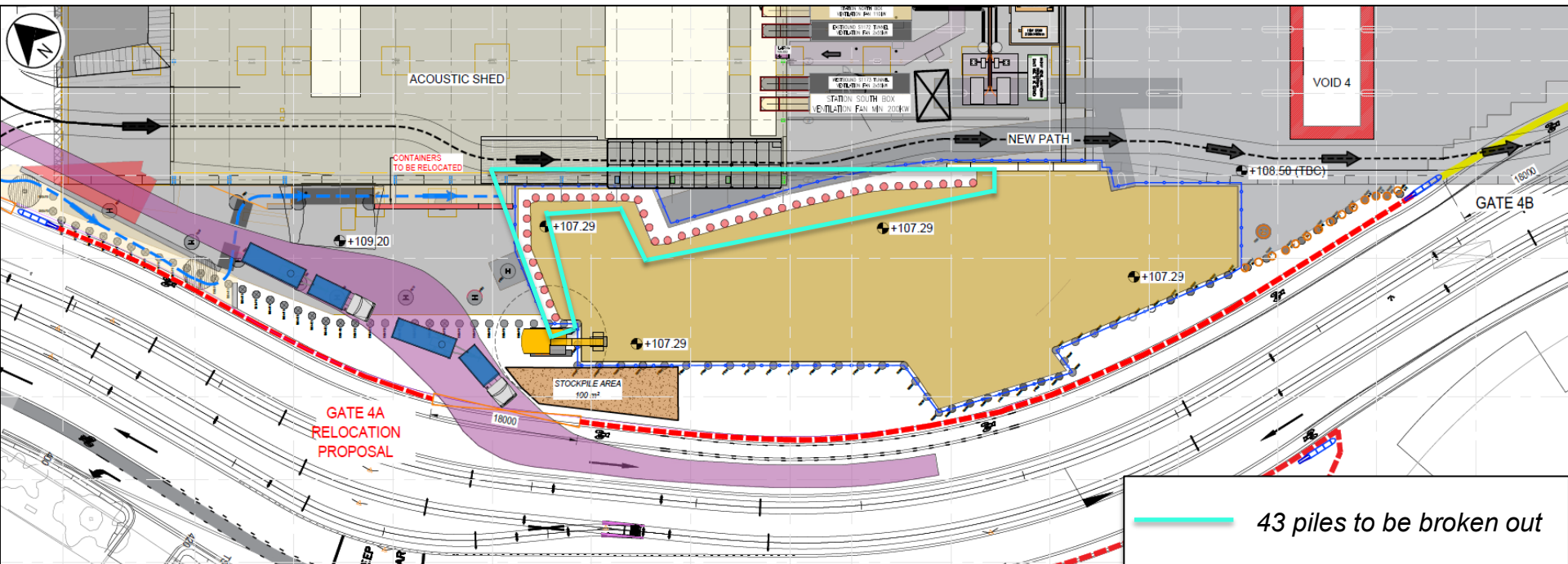
Initial excavation



TBM Storage

Site layout during the first stage of excavation

TRAM INTERCHANGE – MAIN EXCAVATION



Site layout – Main excavation



NOISE MONITORING

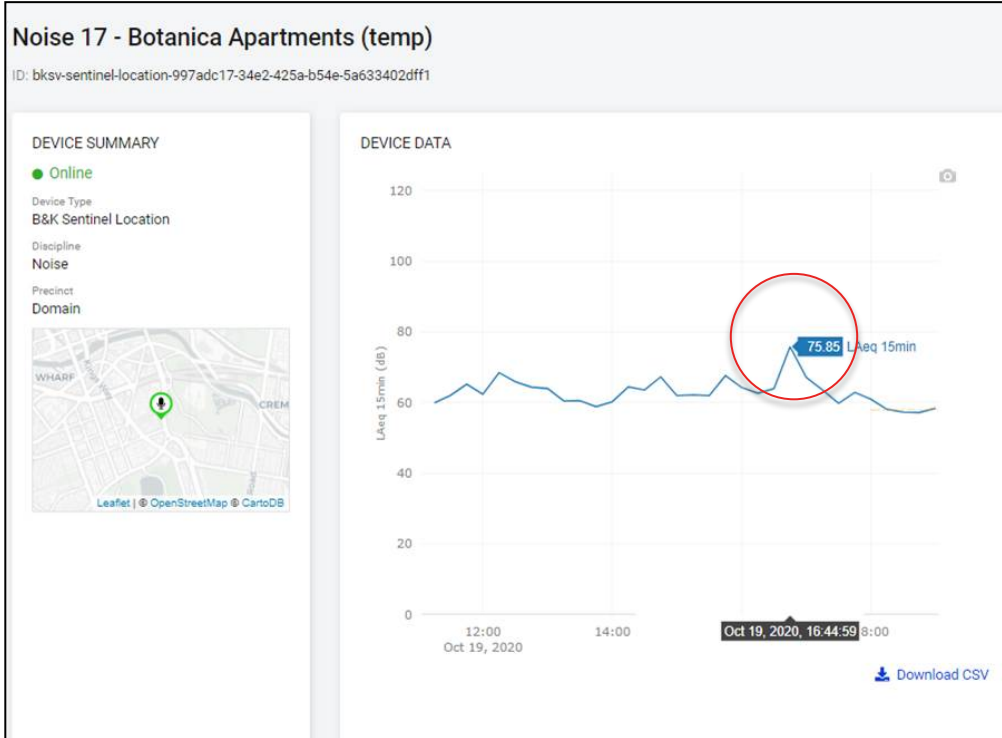
What's involved:

- Pile break out
- Excavation and ground anchors
- FRP

Building	Unmitigated predicted noise level dB <u>LAeq(15min)</u>
The Domain	70 – 80
The Botanica	56 - 65
Hallmark Apartments	69 - 80
Domain Hill	69 - 80

- *Modelled noise levels are unmitigated*
- *Modelled scenarios contain simultaneous equipment in operation, equipment has been reduced for works.*

MYSTERY NOISE UPDATE



- Alerted to a mystery noise resulting in a spike in noise and property damage
- Live cam on Gary's balcony has identified the source.

MYSTERY NOISE UPDATE

2020-10-19 16:39:42
UVC G3 Micro June2020



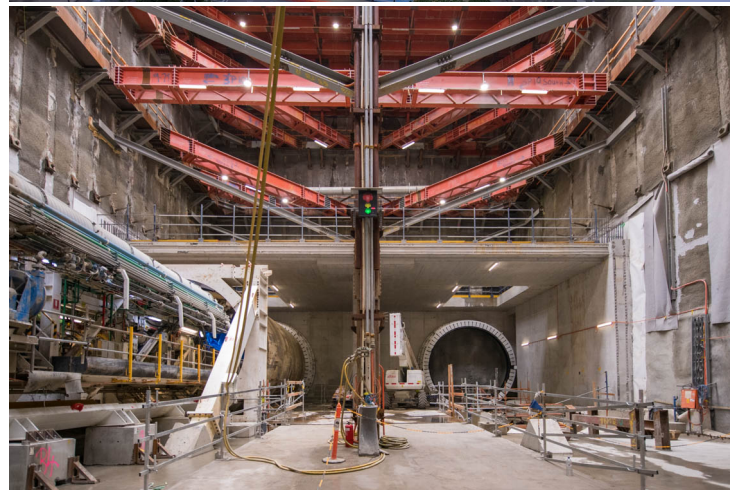


OVERALL PROJECT UPDATE

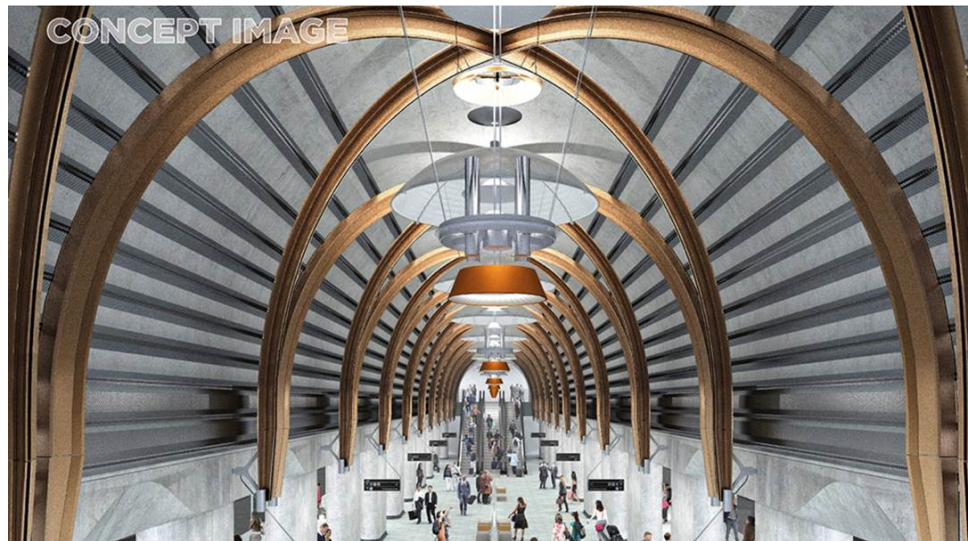
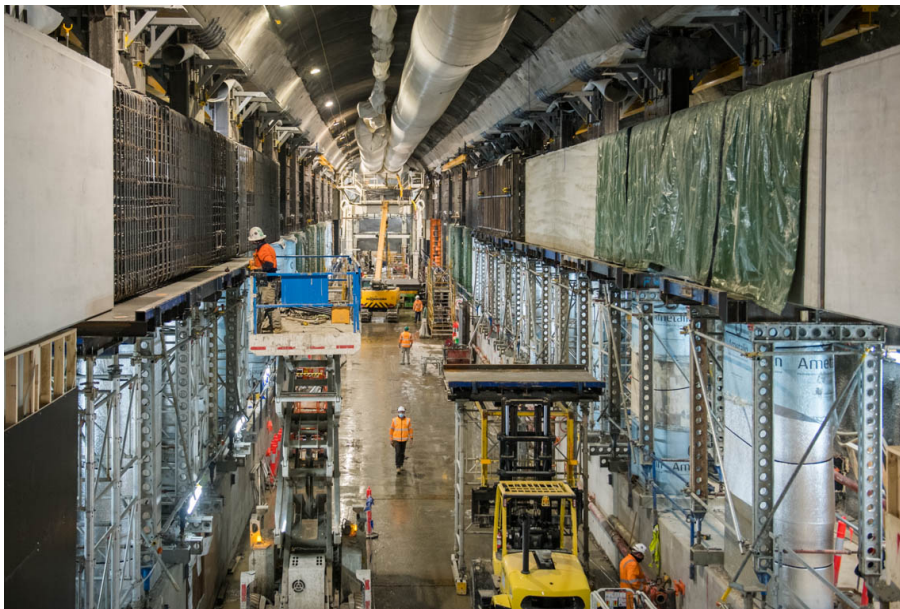


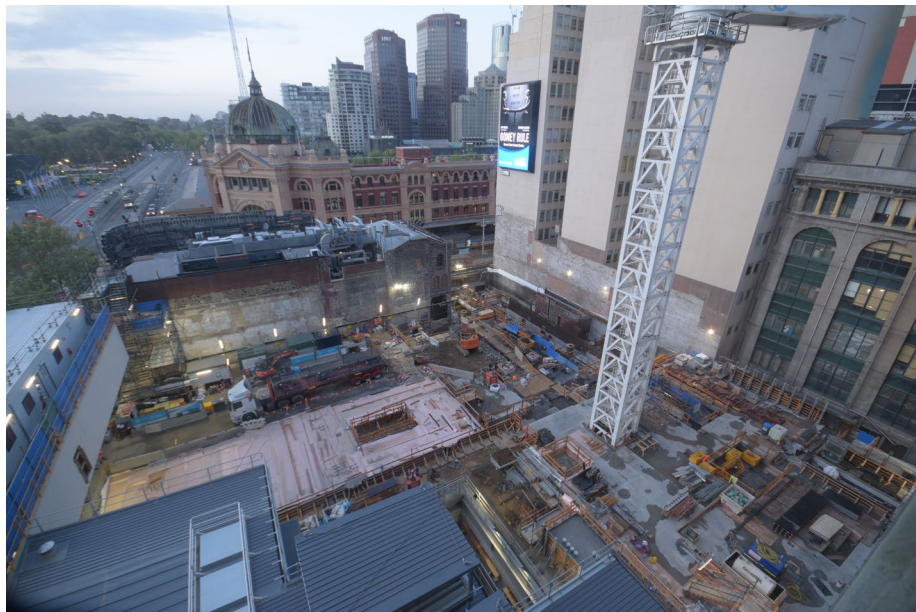
WESTERN PRECINCT













QUESTIONS