



**LEVEL  
CROSSING  
REMOVAL  
PROJECT**

# LEVEL CROSSING REMOVAL PROJECT

CARDINIA ROAD  
PAKENHAM  
FEBRUARY 2021

## Cardinia Road bridge now open

The Victorian Government is removing 17 dangerous level crossings, including Cardinia Road as part of a \$16 billion investment to upgrade the Pakenham line that will improve safety, reduce congestion and allow more trains to run more often.

The dangerous and congested Cardinia Road level crossing is gone for good, with traffic travelling over the new Cardinia Road bridge for the first time on Sunday 6 December.

Nearby residents were first over the bridge, walking across the new shared use path, while trains travelled below.

The new road bridge means no more waiting at the boom gates for the 23,000 drivers travelling through Cardinia Road each day. With the new road bridge now open, travel times will be reduced and safety enhanced for the growing community and surrounding suburbs.

Next we will be removing the final three level crossings in Pakenham at McGregor Road, Racecourse Road and Main Street, as part of the Victorian Governments investment to upgrade the Pakenham line. These upgrades will also include a new Pakenham East Station and a new space for community use.

**Pakenham to be boom gate-free by 2024. Soon travel will be safer and easier for the more than 60,000 vehicles that travel through level crossings in the area each day.**



*Locals are better and more safely connected to shops, schools and services with the shared use path on the new road bridge*



### Thank you

On behalf of the Cardinia Road Level Crossing Removal Project, we would like to thank you for your ongoing patience and cooperation during construction.



**SIGN UP FOR PROJECT UPDATES**  
[levelcrossings.vic.gov.au](http://levelcrossings.vic.gov.au)

Authorised and published by the Victorian Government, 1 Treasury Place, Melbourne



# PUTTING THE 'CAR' IN CARDINIA ROAD


Cardinia Car Club members were the first to drive along the new road bridge, in a convoy of classic and vintage models.

While numbers were limited for the bridge opening, locals walking and cycling on the shared use path were treated to a show as they made their way across.

## How can I see the new bridge?

Check out the video and photos of the bridge on the Cardinia Road page at [levelcrossings.vic.gov.au](http://levelcrossings.vic.gov.au)

While you're there, you can also see progress photos in the gallery, or on our Facebook page.



*Cardinia Car Club, the first vehicles to drive across the new road bridge*

## Paths connecting the community

When the shared use paths and pedestrian paths are completed locals will be more safely connected to services, shops, schools and a new open space.

The shared use path on the western side of the new bridge is now open. The shared use paths on ground level, and the stairs on eastern side of the bridge will soon open to connect to ground level footpaths. Thank you for your patience as we continue to complete works on the ground level shared use paths on either side of the new road bridge.

### Over 1.5km of new paths as part of the project

The community will benefit from 1760 metres of new paths as part of the project.

### Finishing touches

Over the coming months 38,000 trees, shrubs and grasses will be planted. More trees will be added on the south west side of the road bridge, an increase from the original design.

### CCTV cameras coming soon

In May, you told us how important it is that people of all ages can share, and feel safe in, the new open space. In response to your feedback, the new open space will now have CCTV cameras, which will be monitored by Victoria Police, Pakenham. The cameras will help to create a safe environment, for everyone to enjoy.

Works on the new community space under the new road bridge are taking shape. The area is just under 1000 square metres – about the size of four tennis courts – and will cater for a range of leisure activities and interests, including netball, basketball and running.



### What goes into a road bridge?

Thousands of tonnes of materials were used to build the 620-metre-long Cardinia Road bridge.

#### The bridge was built using:

- 200,000 tonnes of compacted soil
- 1200 individual concrete panels forming the retaining walls manufactured in Sale, Victoria
- 24 beams up to 32 metres long and 60 tonnes in weight
- 7500 tonnes of asphalt.



Locals enjoying the new shared use path

7500 tonnes of asphalt was used on the road bridge

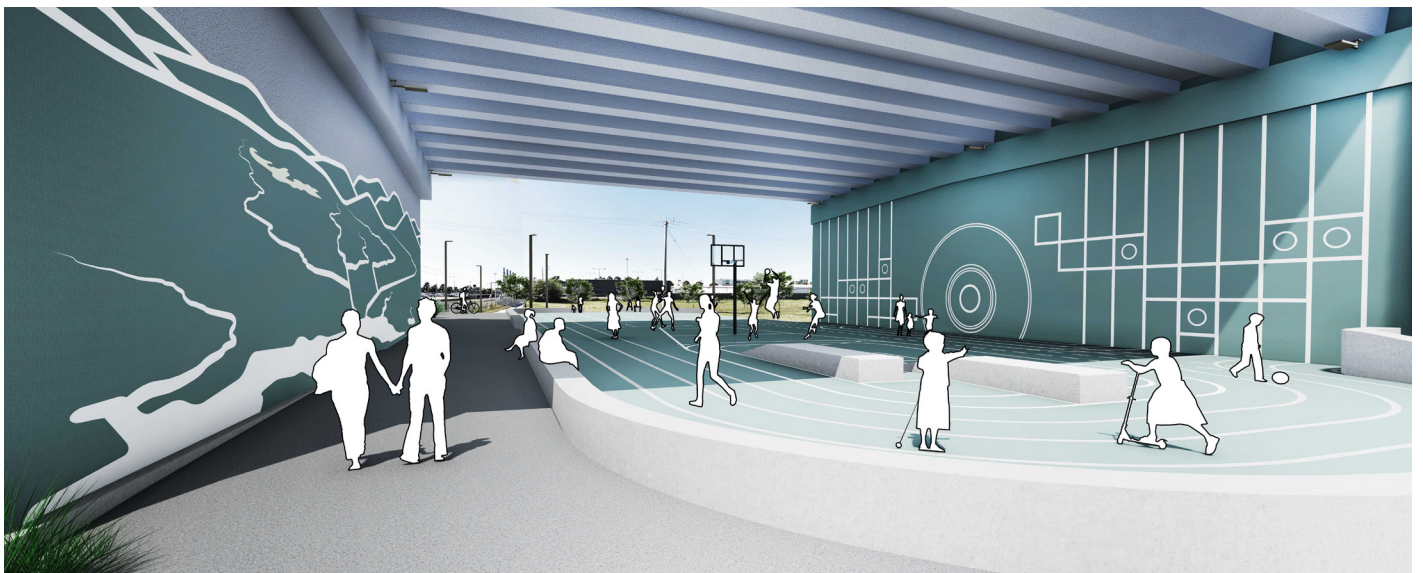
## Community open space complete by mid 2021

The new community open space under the road bridge will open to the public by mid 2021.

The local community will be invited to attend a family friendly event to celebrate the completion of the works.

The new space is the size of four tennis courts and is set to become a place for locals to come together, exercise and relax.

Final plans were shaped by more than 500 pieces of community feedback.






Community open space. Artist impression - subject to change.

# Upcoming works

In February, crews will work outside of our normal hours to complete the final surface layer of asphalt on the Cardinia Road bridge and undertake rail works.

## Our activities will include:

- asphalting works and line marking
- installing drainage
- fencing along the rail corridor
- overhead line works
- removal of the boom gates
- construction of the new stairs and footpaths.

	Upcoming Disruptions	Dates
 Pedestrian	The western and eastern shared use paths on ground level  The shared use path on the eastern side of the new bridge	Closed until March 2021
 Pedestrian	The pedestrian crossing at the rail line will be removed and <b>closed permanently</b>	Closed from Friday 19 February
 Rail	Buses replace trains on sections of the Cranbourne and Pakenham lines	10pm Friday 19 February to last service Thursday 25 February




We'll have detours, traffic management and signs in place to guide you safely around the area.

## Stay up to date

Sign up for regular project updates at [levelcrossings.vic.gov.au/subscribe](https://levelcrossings.vic.gov.au/subscribe)

For more information about the Cardinia Road Level Crossing Removal Project, visit [levelcrossings.vic.gov.au](https://levelcrossings.vic.gov.au)

## Project timeline

-  **Late 2020**
  - Level crossing removed
-  **Early 2021**
  - The western and eastern shared use paths on ground level open
  - The footpath on the eastern side of the bridge opens
  - Shared use path on the northern side of the rail opens
  - Stairs on eastern side of the bridge open to connect to ground level footpaths
-  **Mid 2021**
  - Community open space opens
  - Landscaping completed

*\*Timeline above subject to change*

*Locals walking on the shared use path were treated to a goodie bag as they made their way across the bridge*



## CONTACT US

[contact@levelcrossings.vic.gov.au](mailto:contact@levelcrossings.vic.gov.au)

1800 105 105

Level Crossing Removal Project  
GPO Box 4509, Melbourne VIC 3001

Follow us on social media  
[@levelcrossings](https://www.facebook.com/levelcrossings)



**Translation service** – For languages other than English, please call 9280 0780.

Please contact us if you would like this information in an accessible format.

If you need assistance because of a hearing or speech impairment, please visit [relayservice.gov.au](https://relayservice.gov.au)