



Sustainability
Annual Report
2020

Towards a sustainable future





First Nations Acknowledgement

We acknowledge the First Peoples and Traditional Custodians of the land we now call Victoria. We recognise and respect the continuing connection to land, water, and community, and pay respect to Elders past, present and emerging. We acknowledge that this land was and always will be Aboriginal land.

Contents

Foreword / 4

Introduction / 6

About Rail Projects Victoria / 6

Governance approach / 8

Sustainability Policy / 8

Implementation / 9

Monitoring sustainability performance / 9

Projects in delivery / 10

The Metro Tunnel Project / 12

Sunbury Line Upgrade / 12

Regional Rail Revival / 14

Ballarat Line Upgrade / 14

Gippsland Line Upgrade

- Avon River Bridge / 14

Warrnambool Line Upgrade / 14

Shepparton Line Upgrade / 14

Changing the landscape / 16

The Metro Tunnel and Sunbury Line Upgrade

Project Initiatives / 18

Regional Rail Revival

Project Initiatives / 26

Protecting the natural environment / 28

Building our communities / 32

Our Communities / 34

The Metro Tunnel and Sunbury Line Upgrade

Our Communities / 34

Regional Rail Revival

Our Communities / 36

Education highlights / 38

Education programs / 40

Education program / 41

The Metro Tunnel

Facebook Live / 42

Regional Rail Revival

The Design Challenge 2050 / 43

Social procurement highlights / 44

Creative highlights / 46

The Metro Tunnel Creative Program / 49

Enriching community spaces / 50

Towards a sustainable future / 52

Forewo



rd

It is Rail Projects Victoria's vision to connect Victorians through the delivery of major projects, *'in the healthiest, most sustainable way possible... to ensure a lasting legacy for present and future generations for a more liveable Victoria'*.

The transport infrastructure delivered by Rail Projects Victoria (RPV) is helping to shape communities across Victoria – creating better transport connections and new social and economic opportunities. For every 100 jobs created during construction by our major projects, around 206 indirect jobs in local communities are also supported. These opportunities span across manufacturing, education, finance, accommodation, food supply, health services and more.

In 2020, a year with unprecedented challenges, more than 18,000 people continued to work on delivering Victoria's Big Build.

Over the life of our projects, we will support nearly 7000 jobs for the Metro Tunnel and Sunbury Line Upgrade, over 3000 jobs for Regional Rail Revival, up to 8000 jobs for Melbourne Airport Rail and over 2800 jobs in stage one of Geelong Fast Rail.

As Coronavirus continues to impact the state, safe and reliable transport between our cities and regions will be a key driver of Victoria's economic and social recovery, as we adapt to new ways of working and living.

The Sustainability Annual Report 2020 outlines the achievements and successes of RPV's project portfolio and demonstrates our commitment to sustainability. Reduced environmental impact can be successfully integrated with innovative project design, creative programs to support local communities and local job creation. Initiatives such as the slurry treatment plant at Arden and Anzac Stations on the Metro Tunnel, and the community co-designed mural, park and BMX track delivered with the Avon River Bridge upgrade are examples of this integration.

With the growing number of projects in our portfolio now in construction, we can celebrate the benefits of sustainable design and recognise the economic, environmental and social benefits that our projects are delivering for the people of Victoria.



Evan Tattersall

Chief Executive Officer
Rail Projects Victoria

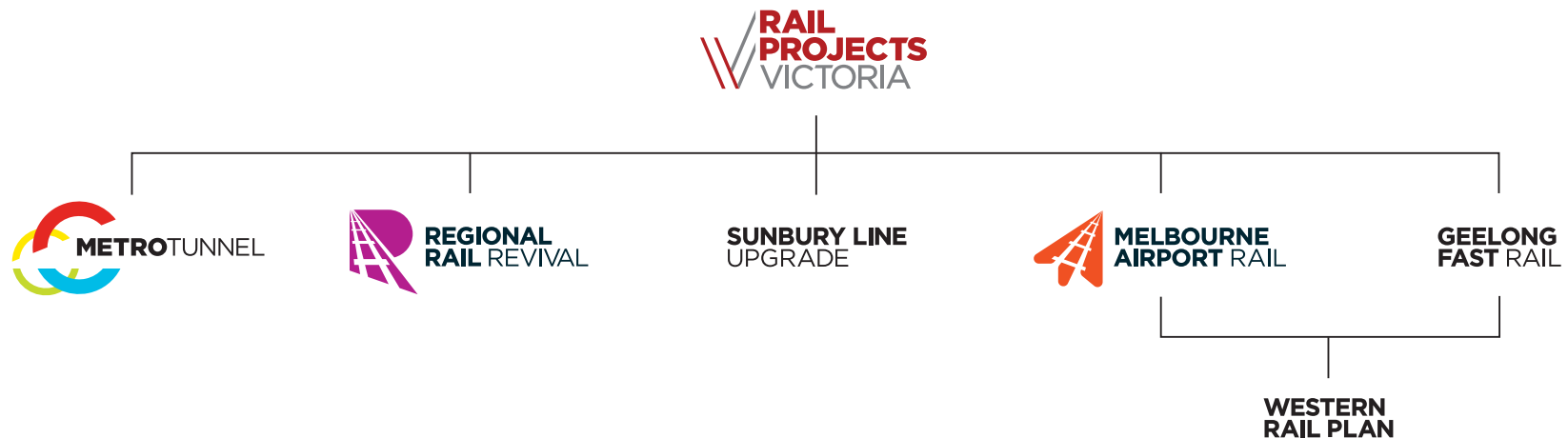
Introduction

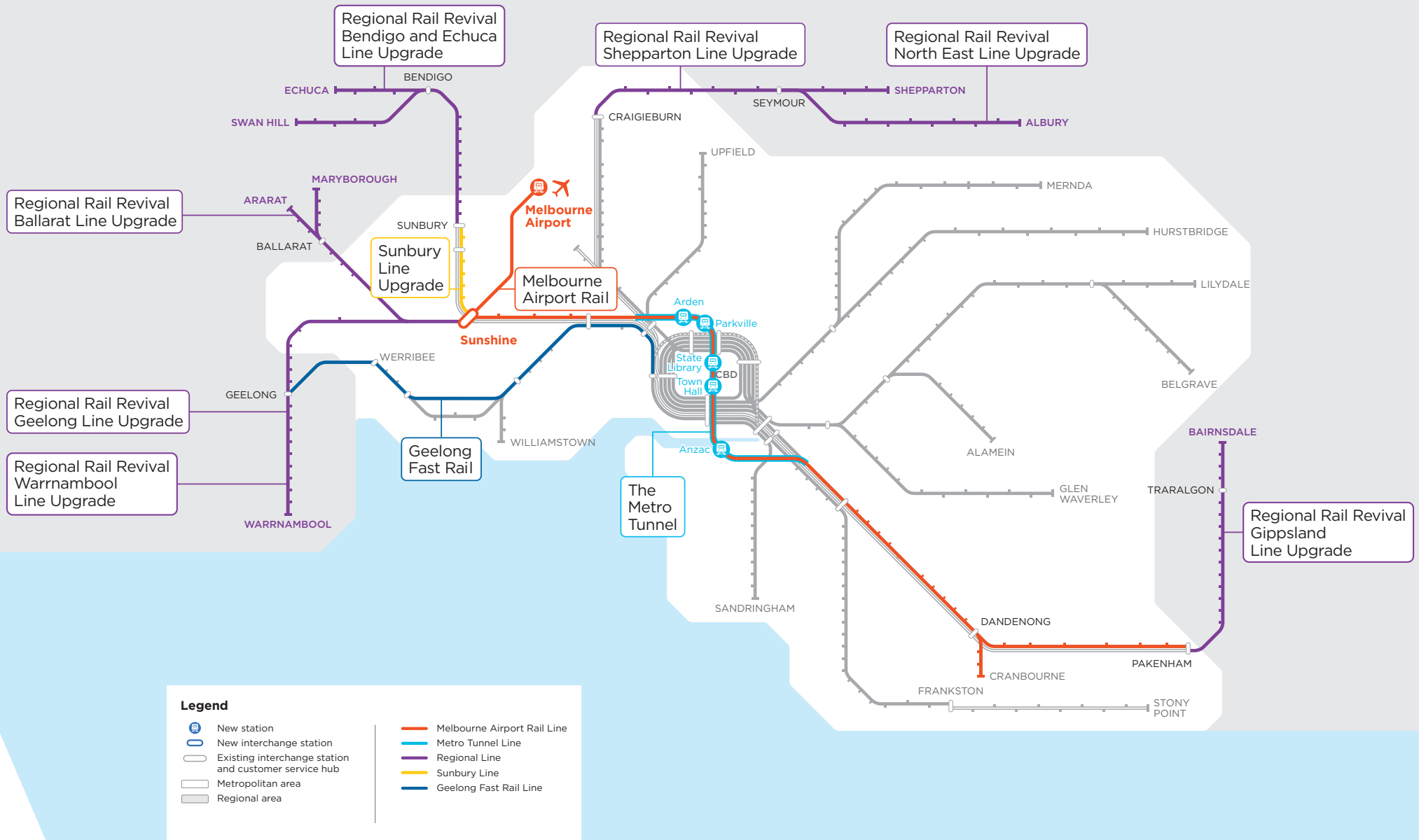
About Rail Projects Victoria

Rail Projects Victoria (RPV) is delivering Victoria's largest ever rail infrastructure pipeline, with more than \$30 billion invested in metropolitan and regional rail projects including Geelong Fast Rail, Melbourne Airport Rail, the Metro Tunnel, Regional Rail Revival and Sunbury Line Upgrade. RPV is part of the Major Transport Infrastructure Authority (MTIA) which was established to oversee major transport infrastructure projects in Victoria.

RPV is responsible for planning and development of project reference designs, site investigations, stakeholder engagement, planning approvals and procurement, through to the construction delivery and project commissioning phases.

We have assembled a skilled team of highly experienced professionals from across the public and private sectors to ensure the objectives of our projects are achieved for the Victorian community.







Governance approach

Sustainability Policy

The RPV Sustainability Policy applies to all projects we deliver, outlining the following vision for our projects:

Through our delivery of major projects, we're committed to connecting communities in the healthiest, most sustainable way possible. We'll help to ensure a lasting legacy for present and future generations for a more liveable Victoria – environmentally, socially and economically.

To achieve this vision, RPV is committed to:

- Optimising the projects' design to ensure they are delivered to operate sustainably
- Managing resources efficiently through embedding energy, water and material saving initiatives into the design, construction and operation of the projects
- Avoiding, minimising and offsetting harm to the environment and the loss of biodiversity
- Protecting and conserving the natural environment
- Preparing for the challenges presented by climate change.

Implementation

We implement our Sustainability Policy by developing sustainability frameworks and strategies for our programs and projects.

RPV's Sustainability Framework identifies five focus areas:

- Energy
- Materials
- Water Management
- Livability and Legacy
- Climate Change Resilience.

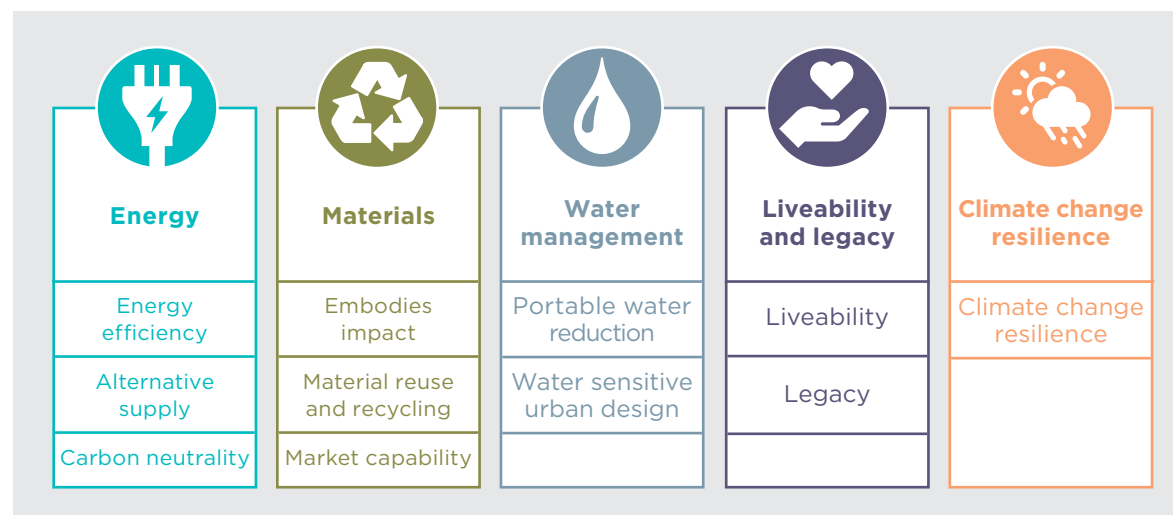
Organisational sustainability commitments are translated into project specific actions, objectives and targets, supported by sustainability management plans. These plans articulate the processes for working with delivery partners to ensure sustainability requirements are achieved.

Monitoring sustainability performance

RPV monitors the sustainability performance of its projects throughout the delivery phase.

This monitoring program includes:

- Collecting and reviewing project sustainability performance information on a monthly basis.
- Using third-party verification rating tools, such as the Infrastructure Sustainability Rating Scheme Tool and the Green Star Rating Tools, to measure and monitor sustainability performance on various projects.
- Externally auditing the projects' sustainability programs on a regular basis to provide assurance that our sustainability requirements are being met.



Projects in delivery





The Metro Tunnel

The Metro Tunnel will create a new end-to-end rail line from Sunbury in the west to Cranbourne/Pakenham in the south-east, with high capacity trains and five new underground stations. It will create capacity on the network to enable more than a half a million additional passengers per week across Melbourne's train network to use the rail system during peak periods.

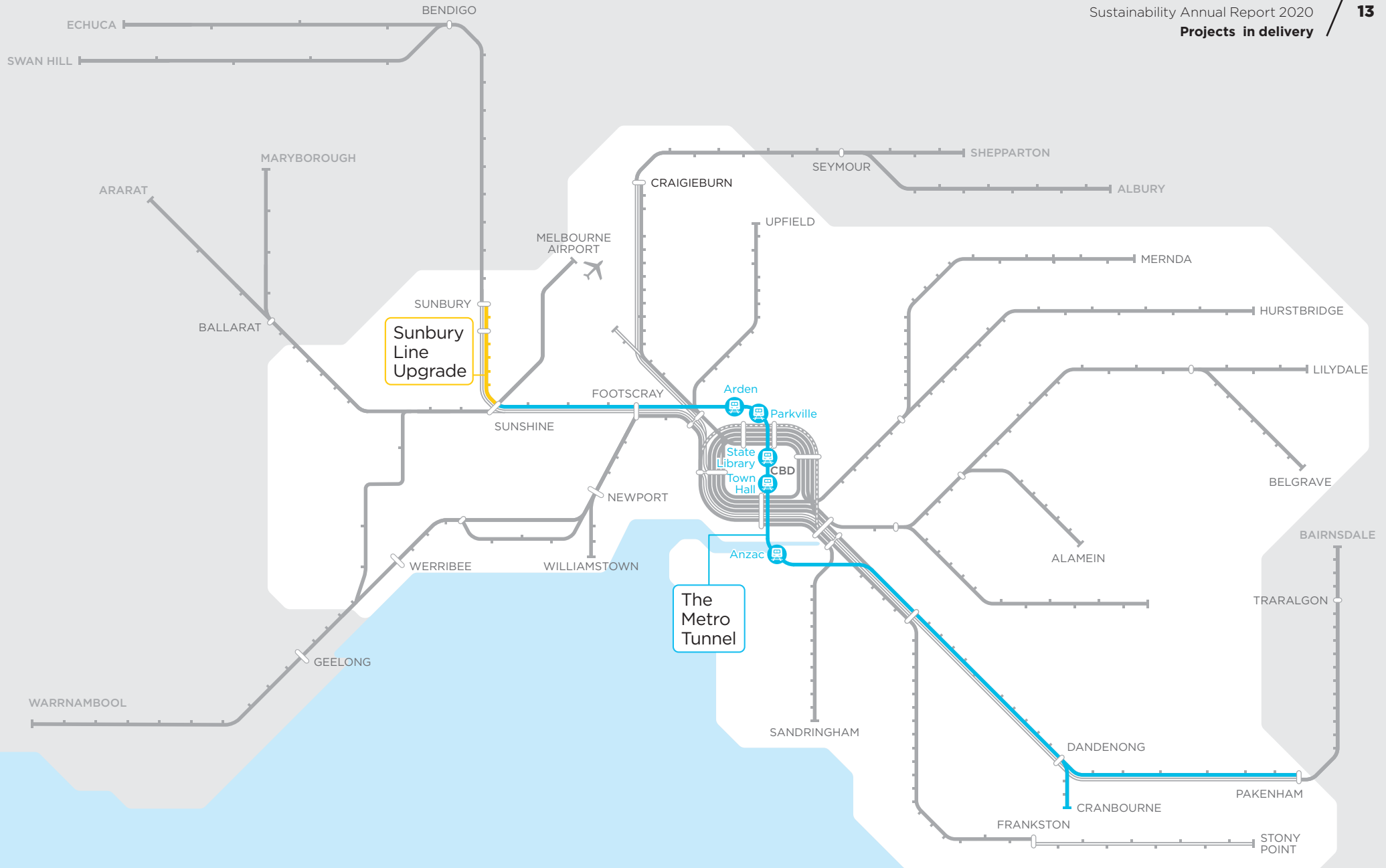
Construction began in 2016.

SUNBURY LINE UPGRADE

Sunbury Line Upgrade

A range of enhancements are needed on the Sunbury Line to enable more modern trains to run on the line and to take full advantage of the extra capacity on the rail network created by the Metro Tunnel. The Sunbury Line Upgrade will see various upgrades within the rail corridor extending from Sunbury to Footscray. These upgrades will ensure more modern trains can reliably run all the way from Cranbourne and Pakenham to Sunbury, linked through the CBD by the Metro Tunnel.

Construction began in 2019.





Overview

The Regional Rail Revival program is upgrading every regional passenger train line in Victoria. It is a joint initiative between the Australian and Victorian governments, including the Ballarat Line Upgrade, Bendigo and Echuca Line Upgrade, Geelong Line Upgrade, Gippsland Line Upgrade, Shepparton Line Upgrade, North East Line Upgrade and the Warrnambool Line Upgrade.

Ballarat Line Upgrade

The Ballarat Line Upgrade is a key part of the Regional Rail Revival program delivering trains every 20 minutes during peak times and every 40 minutes between the peaks. The project will deliver extra services and better reliability for the growing communities in Melbourne's outer west, Bacchus Marsh, Ballan and Ballarat.

The final phase of works, commissioning and critical safety testing to complete the project commenced in late December 2020.

Gippsland Line Upgrade – Avon River Bridge

The Gippsland Line Upgrade will deliver improved train services to the growing communities of Gippsland and create hundreds of jobs in the region.

As part of the upgrade, a new bridge was delivered over the Avon River in Stratford. The new bridge will improve reliability for passenger services. Trains can now travel at up to 90 km/h on the new structure, a significant improvement on the 10 km/h speed limit on the existing bridge. The nearby McAlister Street level crossing was also being upgraded as part of the project, improving safety for motorists and train passengers.

The Avon River Bridge upgrade also included improvements to nearby Apex Park.

Trains began travelling over the new bridge in December 2020, three months ahead of schedule.

Warrnambool Line Upgrade

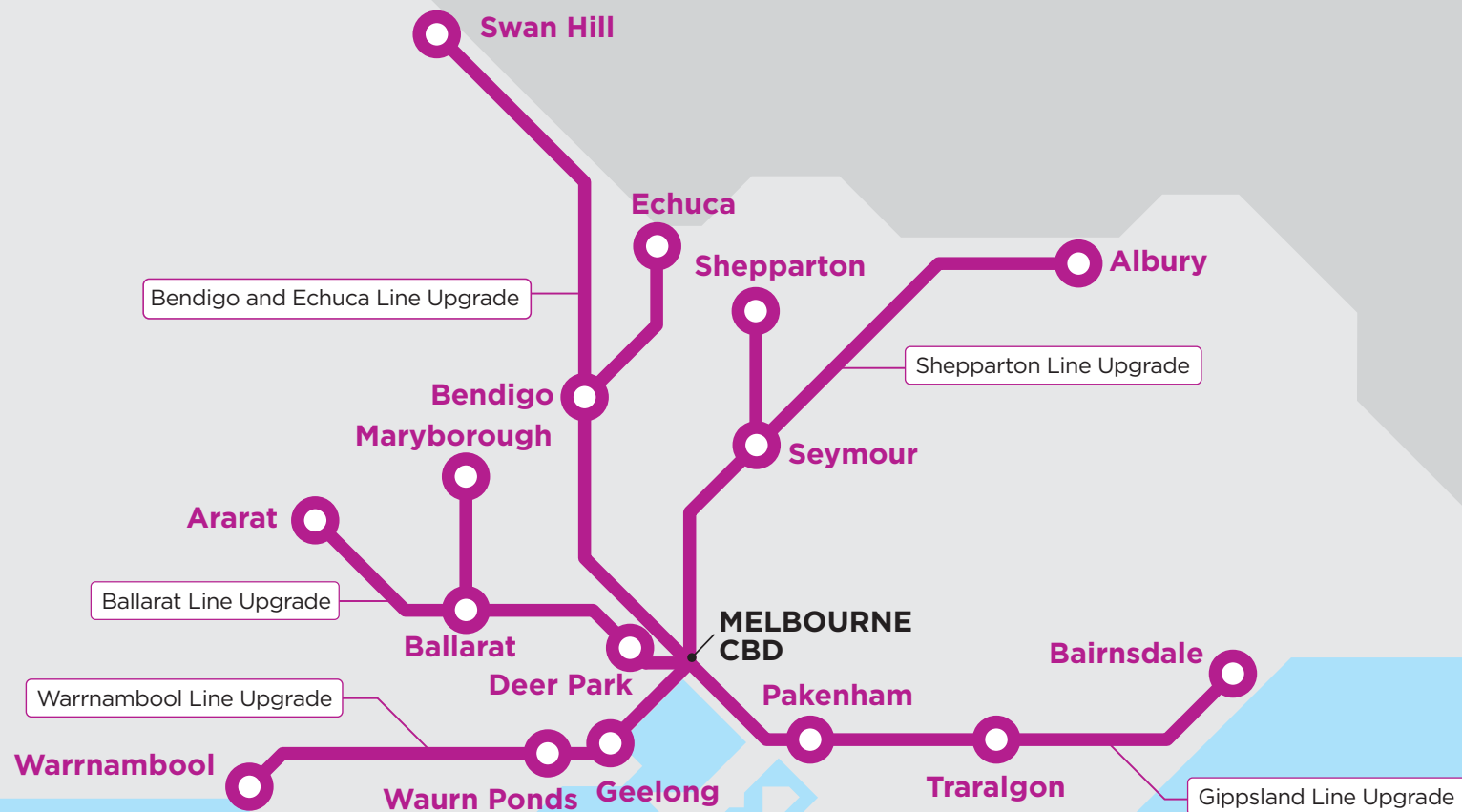
The Warrnambool Line Upgrade will deliver a fifth weekday return service between Warrnambool and Melbourne, boost reliability and improve safety for train passengers and motorists. The project includes signalling upgrades between Waurin Ponds and Warrnambool and a new crossing loop at Boorcan.

Construction commenced in September 2020.

Shepparton Line Upgrade

Stage 1 of the Shepparton Line Upgrade, which is complete, has already enabled 10 extra weekly services on the Shepparton Line.

Work on Stage 2 of the project commenced in late 2020, to deliver the infrastructure required to enable modern and reliable VLocity trains to travel to and from Shepparton for the first time.



Changing the landscape

The work delivered by Rail Projects Victoria will forever transform the Victorian transport network and the lives of people around the state. RPV is committed to minimising the construction and operational impacts of this transformation through the use of innovative technologies and proactive resource management. RPV is maximising the opportunities for positive results throughout the project in both the natural and built environment.





The Metro Tunnel and Sunbury Line Upgrade Project Initiatives



Materials

Rail Infrastructure Alliance

- The concrete mix on the Metro Tunnel has reduced cement usage by some 14500 tonnes, reducing the embodied energy on the project.
- Over 2000 cubic metres of heavy inert and spoil diverted from landfill – that's over 95% of construction waste!

Rail Systems Alliance

- Portland cement content reduced by 36%.
- 100% of steel at Sunshine Signal Control Centre sourced from Australian Certification Authority for Reinforcing Steel (ACRS) certified suppliers.

Cross Yarra Partnership – Tunnels and Stations

- The portland cement content in over 209,000 cubic metres of concrete poured was reduced by 48.9% - this allowed some 52,000 tonnes of embodied carbon emissions to be saved.
- 100% of permanent steel sourced from ACRS certified steel suppliers.



Liveability and Legacy

Rail Infrastructure Alliance

- Changes to the original design allowed an increase in public space: two pocket parks at the Metro Tunnel South Yarra eastern tunnel entrance and an additional 491 square metres in public space at the Kensington western tunnel entrance.
- A bespoke methodology was developed to calculate environmental values across the Sunbury rail corridor, and identify opportunities to enhance environmental value.

Rail Systems Alliance

- The installation of an 11.3*3.1m skylight at the Sunshine Signal Control Centre contributed to the Centre achieving 'Excellence' on the Green Star rating tool.

Cross Yarra Partnership – Tunnels and Stations

- Biophillic design initiatives were implemented in station designs to highlight natural features; skylights at Arden Station will allow natural light to reach not only the concourse level, but the platform below.
- A 6-star Green Star certification was achieved in the design review of the five new underground stations.



Energy

Rail Infrastructure Alliance

- The three major construction and delivery offices are powered by 100% certified renewable energy.

Rail Systems Alliance

- All site facilities connected to mains power are carbon neutral and 100% certified renewable energy.

Cross Yarra Partnership – Tunnels and Stations

- Regenerative breaking on escalators in the new underground stations will allow the capture, storage and reuse of otherwise wasted braking energy.
- 125kW photovoltaic array installed at Arden Station.



Climate Resilience

Rail Infrastructure Alliance

- Two detention tanks with a combined capacity of over 3100 megalitres provide flood protection for the Metro Tunnel as rainfall intensity and frequency increase into the future.



Water

Rail Infrastructure Alliance

- Groundwater and rainwater tanks installed at project sites around Calder Park as part of the Sunbury Line Upgrade have saved over two million litres of potable water to date.
- Treatment of water from non-destructive digging has allowed some 30% of water on the project to be non-potable – that's over 12 million litres to date.
- Water Sensitive Urban Design (WSUD) has been introduced as part of the designs at the Metro Tunnel eastern and western tunnel entrances

Rail Systems Alliance

- A 10kL onsite rainwater tank services the concrete wash out system, reducing reliance on potable water.

Cross Yarra Partnership – Tunnels and Stations

- Water efficient fixtures and fittings were installed at longer-term temporary site facilities.
- Potable water saved on the project by sourcing 100% of water for in-situ concrete mixes from captured and contained sources.
- Water tanks installed at Arden, Parkville and Anzac stations with a total capacity of 165kL.
- Recycled water is used for toilet flushing and washdown at the Tunnel Lining Segment Manufacturing Facility.
- 27,700kL of potable water has been saved through the use of recirculated water at the City Square and Federation Square scrubbers.



Infrastructure
Sustainability
Rating Scheme



The Metro Tunnel Early Works Package has been certified by the Infrastructure Sustainability Council for a Leading As-Built IS Rating score of **81.93**.

Each station on the Metro Tunnel has been certified with a **6-star** Design Review Rating under the Green Building Council of Australia's Green Star rating tool.



**Water**

Water recycling in construction

The Tunnel Boring Machines (TBMs) use slurry to assist in the excavation of material – by recycling slurry, potable water usage on the Metro Tunnel is significantly reduced. The recycled water is treated, and then recirculated into the TBM water systems.

AS OF DECEMBER 2020**140+ OLYMPIC-SIZE
SWIMMING POOLS
WORTH OF WATER****HAVE BEEN
RECYCLED****AT ARDEN STATION AND
ANZAC STATION SLURRY
TREATMENT PLANTS**





Liveability and Legacy

Australian first design

Trinocular construction

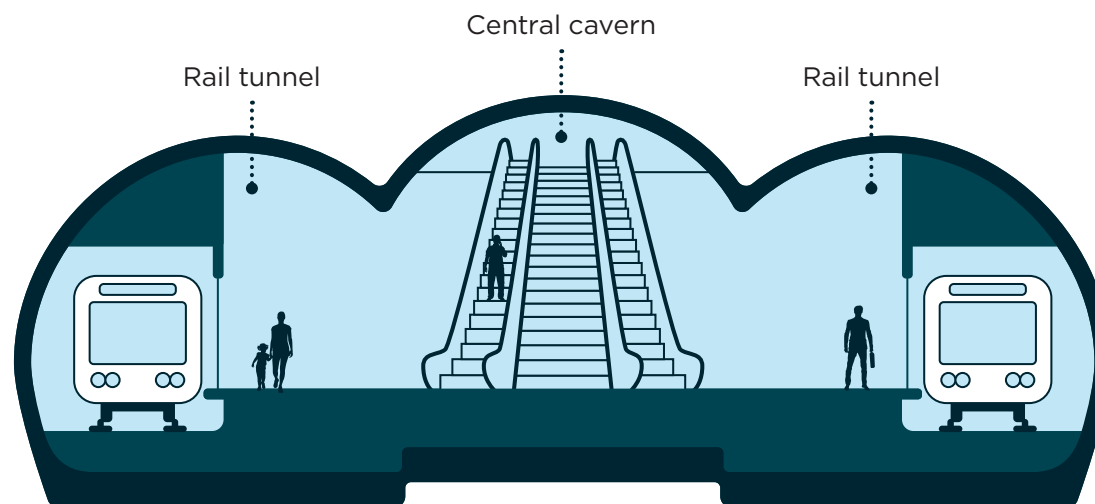
The Metro Tunnel is a massive infrastructure project being built in the heart of the Melbourne CBD. The complex ground conditions see the project's engineering complexity rival that of any metropolitan rail project being built, both within Australia and internationally.

The CBD stations, State Library and Town Hall, will be connected to Melbourne Central and Flinders Street stations respectively. Massive caverns are being built deep under the Melbourne CBD, including a 36m cavern under Swanston Street, between Franklin and La Trobe streets.

In an Australian first, the State Library and Town Hall stations feature trinocular caverns, three overlapping tunnels dug by roadheaders. These create open space, clear lines of sight and easy navigation for passengers, and allow the concourse and platforms to be integrated.

At 18 metres wide, the Town Hall and State Library platforms will be almost the same width as London's Canary Wharf Station. They'll be among the widest station platforms in the world, ensuring enough space for the thousands of passengers that will use them every day and well into the future as Melbourne continues to grow.

Trinocular Cavern





Materials

The Metro Tunnel
Creative Program

Recycling materials

The Metro Tunnel Creative Program identifies opportunities to enhance Melbourne city life as we build the Metro Tunnel.



Upcycled Bags

Working with UpShop Industries, the Metro Tunnel Creative Program has ensured the project banners on construction sites don't go to waste.

More than one thousand square metres of vinyl – or around 675kg – have been diverted away from landfill, and repurposed as new products, including 1000 Metro Tunnel bags.

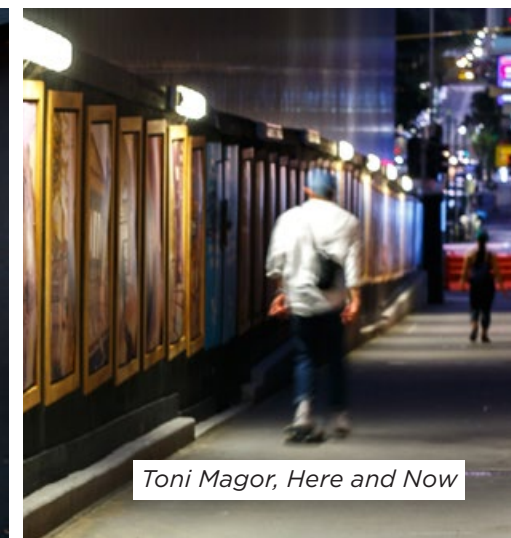
UpShop Industries repurposes materials and objects to extend their life span. They connect creatives, upcyclers and manufacturers to reduce waste and its impact on the environment.

Franklin Street Gallery Frames

Vision Australia is a leading national provider of blindness and low vision services in Australia. They work in partnership with Australians who are blind or have low vision to help them achieve the possibilities they choose in life. The Metro Tunnel Creative Program commissioned Vision Australia to use recycled timber from the Metro Tunnel to create a series of 60 large, wooden picture frames. These are attached to construction hoardings on the Franklin Street acoustic shed.

The team from Vision Australia cut the timber to size, removed all abnormalities and treated the frames with linseed oil to ensure they were suitable for outdoor use.

From June to November 2020, Toni Magor's Here and Now collection was displayed in the outdoor gallery. The collection displays familiar places in an unprecedented time of quiet, demonstrating the effect of COVID-19 on a usually bustling city.



Toni Magor, Here and Now

Regional Rail Revival Project Initiatives



Water

Ballarat Line Upgrade

- Water Sensitive Urban Design included at Rockbank, Cobblebank, Bacchus Marsh and Ballan stations.
- Xeriscape landscaping utilised to eliminate the need for irrigation.
- 4-star and above WELS water fittings installed at stations and facilities.
- Total water use was reduced by 92.4% against a reference case; the use of local non-potable water during construction and operational phases reduced potable water use by 30.2%.



Materials

Gippsland Line – Avon River Bridge

- 230 tonnes of steel and 100 cubic metres of concrete were covered by Environmental Product Declarations.
- 100% of non-contaminated spoil was reused on site.
- Mobile and battery recycling collection points were set up in the site office to maximise recycling.
- 60.5% of office waste on the project was recycled.

Ballarat Line Upgrade

- 353 tonnes of steel beams substituted with concrete precast columns.
- 95% of permanently installed timber was re-used, post-consumer recycled or sourced from the Forest Stewardship Council.



Climate Resilience

Gippsland Line – Avon River Bridge

- Bridge features and design minimise hydrological impacts, and allow for an 18.4% increase in rainfall intensity by 2100.

Ballarat Line Upgrade

- All high and extreme climate change risks were adapted through design, including measures to tackle grassfire, extreme heat, and the urban heat island effect.



Energy

Ballarat Line Upgrade

- A 60kW solar panel system powered the project office, and three project compounds used carbon offset electricity.
- 26.22kW of photovoltaic solar panels were installed for operations.
- 31% certified renewable energy used for construction.



Infrastructure
Sustainability
Rating Scheme

The Ballarat Line Upgrade has been certified by the Infrastructure Sustainability Council for a Leading Design IS Rating Score of **79**, and a Leading As-Built IS Rating score of **82**.





Liveability and Legacy

Regional Rail Revival
Creative Strategy

Protecting the natural environment



Ballarat Line Upgrade

Protected Vegetation Sites

As part of the Ballarat Line Upgrade, seven protected vegetation sites were established. The sites included threatened ecological communities, and critically endangered natural temperate grasslands of the Victorian Volcanic Plain. Strategically monitored and managed by site environmental coordinators and ecologists throughout construction, these No-Go zones will continue to be managed after construction concludes.

Warrnambool Line Upgrade

Remnant Vegetation

Nine vegetation species pre-dating colonisation were found in the project site. The Bellarine Landcare Group and Geelong Field Naturalist Club were assisted in collecting seed and gather propagation material for salvage to their indigenous nursery, and future repatriation to the area.





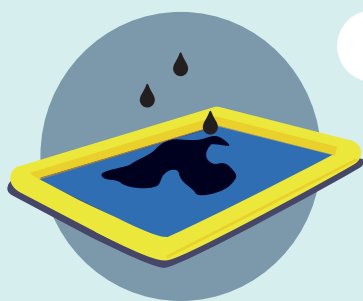
Gippsland Line Upgrade

Avon River Bridge: Plant Nappies

Home to two vulnerable fish species (the Australian Grayling and Dwarf Galaxia), and connected to the Ramsar listed Clydebank Morass wetland, the Avon River Bridge Upgrade project operated in an ecologically rich environment.

The Plant Nappy®, a new and innovative approach, was used to minimise water and land contamination. Effectively operating as a drip tray, the portable, self-draining bund traps hydrocarbons whilst allowing rainwater to pass through, thereby minimising harm to the surrounding environment.

How it works

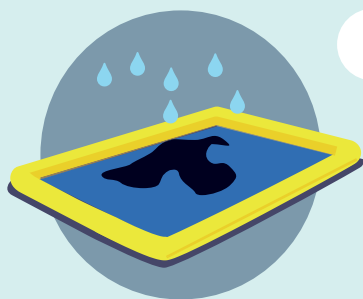


1

The Plant Nappy® is designed to sit under plant or machinery to capture drips of oil or fuel.

The Plant Nappy base contains an oil soak filter which captures any spillage.

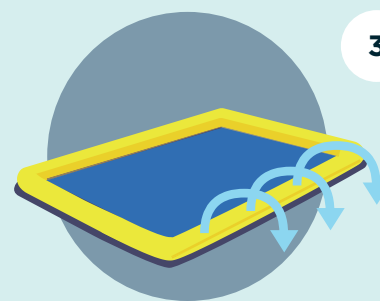
It is protected by a permeable top which allows free passage of contaminants.



2

The Plant Nappy® design means that it is durable in all weather conditions and overcomes the problem of traditional drip trays filling with water.

The Plant Nappy can be stood on uneven terrain and there will be no loss of performance. The Plant Nappy can hold up to 16 litres of oil.



3

The side walls of the Plant Nappy® are made from a permeable filter fabric.

The walls allow for free passage of water but not contaminants. The oil or fuel remains captured inside the Plant Nappy filter. The Plant Nappy only discharges CLEAN water.



4

Liners can be purchased for the Plant Nappy® which help extend its life.

The liner sits snugly in the base of the Nappy. Cleaning the Nappy is simple as the liner is easy to remove. To clean, squeeze out the contaminants into suitable container.

Building our communities

Every project provides an opportunity to support local communities. Community engagement allows local voices to be heard, and where possible, to input into aspects of our projects. Social procurement, employment programs, and education and training opportunities provide support for refugees and asylum seekers, Aboriginal Australians, people living with disability, early career professionals, students and children in the communities where our projects are based.

These initiatives aim to strengthen community ties and support the industry into the future.





The Metro Tunnel and Sunbury Line Upgrade Our Communities



Aboriginal Engagement

Rail Infrastructure Alliance

- Aboriginal Employment Target: 144 Aboriginal people employed, totalling 114 272 hours of work.
- On Track program piloted – a Victorian-first program that provides young Aboriginal people, and other overrepresented groups in the youth justice system, with paid on-the-job training, mentoring and work experience for three months.

Rail Systems Alliance

- Engagement with 30 Indigenous businesses and social enterprises, including Bunji Hire, Shining Knight, and Towcha Technologies.

Cross Yarra Partnership – Tunnels and Stations

- In 2020, renowned Victorian First Nations artist Maree Clarke was announced as the line-wide artist as part of the Metro Tunnel Legacy Artwork Program. Maree is creating an artwork that will span all five Metro Tunnel underground stations, and has been working with CYP in development of a line-wide concept.



Community Engagement

Rail Systems Alliance

- Six local government areas engaged; more than 30 meetings led, and 16 works notifications letterbox dropped.

Cross Yarra Partnership – Tunnels and Stations

- 50 CYP staff volunteers participated in the Business Clean Up Australia Day. Two hours, 21 bags of rubbish and 23 bags of recyclables.
- Community Reference Groups engaged with to present sustainability deliverables, objectives and key targets to ensure community is informed.



Social Procurement

Rail Infrastructure Alliance

- Priority Job Seekers: 310 people employed including 39 refugees or asylum seekers, 59 people with a disability and 146 long-term unemployed people.

Rail Systems Alliance

- Priority Job Seekers: 15 direct-priority job seekers employed on the project.
- All communications materials, works notifications, brochures etc. are printed and distributed by social enterprise Nadrasca.
- Nominated for the Social Traders Award for their partnership with Wallara; nominated for Supply Nation Award for partnership with Interact – both of which support people with disabilities.

Cross Yarra Partnership – Tunnels and Stations

- Partnership with social enterprises like Ability Works, who provide employment opportunities to those living with a disability or otherwise socially excluded (see p.45).



Industry and Education

Rail Infrastructure Alliance

- Major Project Skills Guarantee: 39 trainees, 77 cadets and 36 apprentices worked on the project.

Rail Systems Alliance

- 24 cadets joined in 2020.
- Partnered with Melbourne Polytechnics to engage alumni, 8 of whom joined the project for work experience.
- Hume/Whittlesea Local Learning and Employment Network: Participation in the 2020 Real Jobs Industry Program including a guest speaker at the Careers Expo.

Cross Yarra Partnership – Tunnels and Stations

- Cadetships provided to university students as a part of the Major Projects Skills Guarantee.
- Sustainability in Construction Unit of Competency developed with the Office of the Victorian Skills Commissioner, to address identified training and knowledge gap in the industry.
- Partnered with RMIT and the University of Melbourne to engage students with industry professionals, and present renewable energy research projects. 145 students participated.
- Partnered with the University of Melbourne to deliver several lectures to university students in engineering.



Regional Rail Revival Our Communities



Aboriginal Engagement

Gippsland Line Upgrade – Avon River Bridge

- More than 90% of the social procurement spend supported Aboriginal business.
- Aboriginal Employment: 5.03% of the total workforce hours were delivered by Aboriginal people.

Ballarat Line Upgrade

- Aboriginal Employment: 3.24% of the total workforce hours were delivered by Aboriginal people.
- Engagement with 14 Aboriginal businesses.



Community Engagement

Gippsland Line Upgrade – Avon River Bridge

- Community days and online learning resources provided.

Ballarat Line Upgrade

- Sub-engagement plans used to ensure communication and engagement was tailored to different stakeholder groups across the corridor.



Social Procurement

Gippsland Line Upgrade – Avon River Bridge

- Achieved social procurement spend of over one million dollars.
- Partnership with Skillinvest.

Ballarat Line Upgrade

- Engagement with three social benefit suppliers.
- Achieved a social procurement spend of over five million dollars.



Industry and Education

Gippsland Line Upgrade – Avon River Bridge

- Student webinars and site excursions provided.

Ballarat Line Upgrade

- Major Projects Skills Guarantee: 105 728 hours of work were delivered by those under the Major Projects Skills Guarantee.



Rockbank Station Reopening



Industry and Education

Metro Tunnel Cadetships

Education Highlights

A cadetship is an internship for university students that combines formal university studies with practical work experience.



The Major Projects Skills Guarantee (MPSG) aims to grow the next generation of skilled workers in Victoria by requiring that high value government construction projects provide apprentices, trainees and cadets with opportunities to work on them. Cadets are employed across all Metro Tunnel packages.

Cadet to Career

Adam Jones, Environment Coordinator East Precinct (Cross Yarra Partnership - Tunnels and Stations)

Adam worked on the project as a cadet while studying a Bachelor of Environments at University of Melbourne in 2018.

He joined the project full time as the Environment Coordinator for the East Precinct in November 2018, supporting the Eastern Portal (tunnel entrance) and Cross Passage construction sites.

“I learned a lot about infrastructure projects during my cadetship. I was exposed to working on a highly technical project and covering multiple scopes of work, something I wouldn’t normally get to do.

It taught me everything from the importance of relationships on site to some of the technical knowledge required by the role. The cadetship was a stepping-stone for my career and without it, I wouldn’t have been able to get to where I am now.

My current role exposes me to every aspect of construction, from tunnelling to excavation to ground treatment and reinstatement. The role is diverse and covers a wide array of aspects which prevents it becoming a chore as tomorrow will be different from today which was completely different from yesterday.”

“It taught me everything from the importance of relationships on site to some of the technical knowledge required by the role.”

– Adam Jones (Environment Coordinator – East Precinct)

Rail Projects Victoria

Education program



Education Program

RPV's education activities focuses on careers learning, skills development, and student participation in Science, Technology, Engineering, Arts and Maths (STEAM) subjects.

Whilst previous years have seen the program centred around the Metro Tunnel HQ classroom, and in-school sessions, just 18 school visits took place at Metro Tunnel HQ before the COVID-19 pandemic hit and the visitor centre had to close.

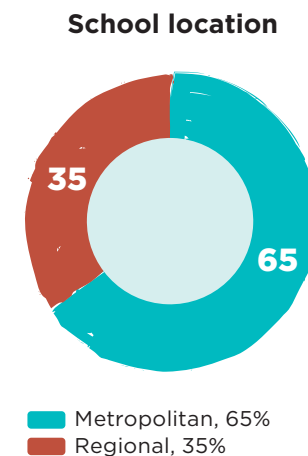
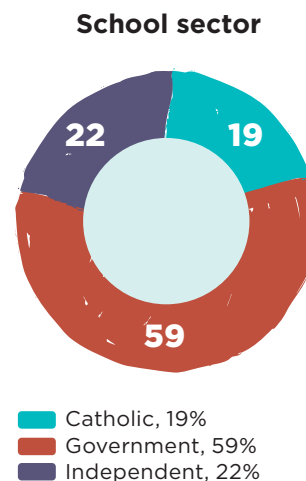
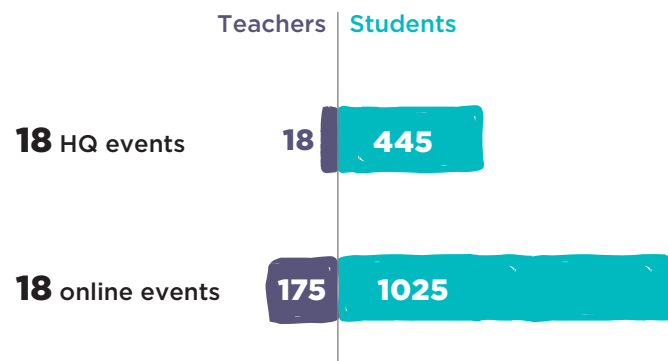
The Metro Tunnel Education Program was then reinvented to include an expanded web presence and utilise new technologies to deliver online school 'incursions' and events.

Online initiatives included:

- Leveraging our partnerships with organisations including the Victorian Department of Education and Training and the Careers Education Association of Victoria to present webinars and online presentations for teachers and students

- Mini Melbourne became a core resource as schools moved to remote learning and users of Minecraft: Education Edition in Victorian schools exceeded 30,000 per month
- Metro Tunnel Education Website refresh to include new learning modules with videos, puzzles, activity sheets and challenge materials.

A total of
36 education
events for 2020



The Metro Tunnel Facebook Live

On Saturday 7 November 2020 RPV's first Facebook Live event for kids and their parents was attended by up to 200 people and the video of the session has since been viewed more than 4000 times. The 20-minute session focussed on the machinery used to build our tunnels and introduced viewers to RPV's education website.

Significantly, the largest section of our audience was women aged 35-44, a group that is traditionally less aware and informed about the Metro Tunnel based on our social media demographic data.

The success of this event has encouraged us to consider further Facebook Live activations for young people.



Regional Rail Revival Design Challenge 2050

Partnering with Bendigo Tech School, the Bendigo Discovery Science & Technology Centre and the Goldfields Local Learning and Employment Network, Design Challenge 2050 invited teams of students in years 5-8 to present their ideas for the future of public transport and asked them to consider, 'What does the smart and connected city of 2050 look like?'.

103 students from six schools in the Bendigo region participated in the competition. As the Melbourne COVID-19 lockdown continued, Design Challenge 2050 was ultimately delivered almost entirely online but the successful use of a remote model provides opportunities for expansion of the competition to additional regional areas in 2021.

Design Challenge 2050

Win
big prizes for your team and school

What does the smart and connected city of 2050 look like?

How to enter
Calling all young designers, coders and makers from Years 5 to 8. Form a team, develop your idea on the future of rail and pitch it to a panel of rail experts.
Contact your local tech school:
Bendigo Tech School
T: 03 5444 7113
E: bendigotechschool@latrobe.edu.au

BENDIGO TECH SCHOOL | EDUCATION VICTORIA | VICTORIA | LA TROBE UNIVERSITY |

To find out more visit: regionalrailrevival.vic.gov.au/designchallenge2050



Social Procurement

Social procurement highlights





Based in Kew, Ability Works is a social enterprise that provides employment opportunities to those living with a disability, or otherwise socially excluded across four business units: wire & metal fabrication, records management, packing & assembly and user centred design recruitment services.

Ability Works was engaged by Metro Tunnel contractor Cross Yarra Partnership to provide services to the Tunnel Lining Segment Manufacturing Facility in Deer Park across two discreet projects. The first was placing rubber locators into timber sleepers. Sections of the tunnel lining segments are stored on these sleepers prior to use.

The second was capping ferrules (steel rods used for the mechanical and electrical installation in the tunnel) with plastic caps, and hand-winding large nuts onto bolts as part of the segment manufacturing process.

The scope of works provided employment for both people living with a disability and those requiring enhanced support.

‘Working on such a high-profile job has given our employees much satisfaction and pride’, says Tamsin Ashdown, General Manager – Commercial, AbilityWorks.



Shining Knight Indigenous Services has helped to keep the Metro Tunnel’s Rail Systems Alliance workplaces spotless since 2018, including carrying out pandemic-related deep cleans in recent months.

SKIS chief executive Kim Calcatjicos said: ‘Rail Systems Alliance has been an exciting and interesting client for us to work with. We have been able to add up to eight part-time roles thanks to this ongoing relationship with RSA.’

New starter Fahim said he was delighted to have landed a new role as a part-time cleaner at RSA’s 628 Bourke Street office.

‘It’s been an exciting and rewarding prospect, working with Shining Knight and the Metro Tunnel on Victoria’s Big Build,’ he said.

Kim said RSA’s support would enable Shining Knight to host a marketing and information meeting for Melbourne Indigenous businesses to network and showcase their businesses, in addition to creating an Aboriginal business directory.



Zancott Recruitment is a 100% Aboriginal owned and operated Indigenous recruitment and labour hire company. In the delivery of the Avon River Bridge, Zancott Recruitment was engaged to provide track protection requirements. Partnership with Rail Projects Victoria has contributed to the company acquiring their Supply Nation accreditation – an accreditation which allows the business to be listed on Indigenous Business Direct, the largest national directory of Aboriginal and Torres Strait Islander businesses.

“It’s been an exciting and rewarding prospect, working with Shining Knight and the Metro Tunnel on Victoria’s Big Build”

– Fahim (Shining Knight/Metro Tunnel)



Community Engagement

The Metro Tunnel Creative Program

Creative highlights

The Metro Tunnel Creative Program executes the Metro Tunnel Creative Strategy vision to create 'a legacy of high-quality experiences and places that put people first – contributing to Melbourne's current and future liveability, international standing and reputation for creative excellence'.



Parkville Biomedical Precinct Thank-You Phoebe Powell

The Parkville Biomedical Precinct is home to some of the world's leading medical researchers, clinicians and academics. Healthcare workers were thrust to the frontlines amidst COVID-19 and the photo essay in the Parkville Precinct reminds us to acknowledge and appreciate the work they are doing to keep our community safe.

Parkville Story Telling Project Jasmine Holmes (designer), Alice Lindstrom, Mark Conlan, Antra Švarcs and Janelle Barone (illustrators)

The Parkville Story Telling Project shares the stories of important people, teams or programs in the areas where Metro Tunnel works are being delivered, and thus leverages the works to engage with the community. Featuring institutions like the Royal Children's Hospital, alongside Victoria's first female premier Joan Kirner, the story telling project connects us to the past, whilst works to shape the future are built.



Parkville Story Telling Project
Jasmine Holmes



Parkville Biomedical Precinct Thank-You
Phoebe Powell



Peter Waples-Crowe,
Mirrigang Days

The Metro Tunnel Creative Program

Koorie Art Show 2020

In 2020 the Metro Tunnel Creative Program continued its sponsorship of the Koorie Heritage Trust Koorie Art Show for the third year in a row. The Metro Tunnel Creative Program presented the 2D Award at the annual Koorie Art Show, and displayed the winning work from 2019, *Mirriang Days* by Peter Waples-Crowe, at Federation Square.

Albert Road Reserve Pop-Up Park

The Metro Tunnel Creative Program delivered a temporary pop-up park in Albert Road Reserve. Revitalising the space, the park features timber decking, generous seating and new plantings to improve the aesthetic and amenity of the reserve.



Albert Road Reserve Pop-Up Park



Liveability and Legacy

Regional Rail Revival
Liveability and Legacy

Enriching community spaces

The Regional Rail Revival Creative Strategy identifies the opportunity to contribute to sustainable creative industries.



Gippsland Line Upgrade – Avon River Bridge

Apex Park community engagement

The Stratford community was engaged in designing the new Apex Park and BMX/ Pump Track and was supported by RPV to help create a legacy for their community. The engagement process focused on accessibility and inclusiveness to ensure the community and the children who may use the park into the future had input into the BMX track, the nature based-playground, the plants around the park and the *Dooyeedang Stratford Mural*.

Engagement included a community day in February with more than 200 attendees, an online survey for those unable to attend, and presentations to St Patricks Primary School and Stratford Primary School.

The Dooyeedang Stratford mural

Ray Thomas was selected to paint the mural for the Avon River Bridge Upgrade. Collaboration with the Gunaikurnai, and the community saw 'the Avon River' selected as the theme for the artwork. In his work, Ray honours the Brayakalulung clan and their connection to Dooyeedang (the Avon River). The artwork references Borun the Pelican, Tuk the Female Musk Duck, early European settlement and Ray's own family history with the Ramahyuck Aboriginal Mission.




Ray Thomas,
The Dooyeedang Stratford mural



A blurred figure in a blue shirt is running past a vibrant, stylized mural of a city street scene. The mural features a red tulip, a red and white striped awning, and a blue sky with a white cloud. The text "Towards a sustainable future" is overlaid in large white letters.

Towards a sustainable future

With projects underway across metropolitan and regional Victoria, RPV is working with our delivery partners to achieve positive outcomes for the community, the environment and our projects. As we grow, the lessons learned from our projects allow us to improve and drive greater innovation in the future so we can continue to connect communities and people, in the most sustainable way.




*Miles Howard-Wilks,
Transport paintings*

More information

To find out more about our projects:

 railprojects.vic.gov.au

 1800 105 105 (24 hours a day, 7 days a week)

