

Artist's impression of express lanes and Estelle Street bridge, Balwyn North



# Overhaul of the Eastern Freeway taking shape

North East Link will take trucks off local roads and give local streets back to local residents. As part of this massive program of work, we'll be overhauling the Eastern Freeway.

These upgrades will add more than 45 kilometres of new lanes where they're needed most, and up-to-date technology will slash travel times on the freeway by up to 11 minutes.

The Eastern Freeway will be upgraded with express lanes that will cut travel times and include a new green bridge in Bulleen, connecting Koonung Creek Trail to Yarra River parkland.

Trips along the Eastern Freeway will be smoother and faster, with six express lanes between Middleborough Road and Chandler Highway reducing the merging and weaving that causes congestion.

Two bidders have now been shortlisted to build the first section of the Freeway Upgrade from Burke Road to Tram Road.



**Skip 18 traffic lights**

from the Eastern Freeway to the Ring Road



**Save up to 11 minutes**

on the Eastern Freeway



**Save up to 35 minutes**

between Melbourne's north and east



Sign up for project updates  
[northeastlink.vic.gov.au](http://northeastlink.vic.gov.au)

# Eastern Express Busway

Melbourne's first dedicated busway will make it quicker and easier to get to and from the city with a brand-new park and ride in Bulleen and an upgraded park and ride in Doncaster.

- 11km** of dedicated bus lanes from Doncaster towards the city
- 100km/h** travel speeds
- Two park and rides** in Bulleen and Doncaster, doubling the number of commuter parking spaces for express bus services to the city
- Travel times slashed** for more than six million express bus trips a year



Artist's impression of bicycle path and Eastern Express Busway, Kew

## Getting builders on board

To deliver the massive program of North East Link works, we're progressively appointing teams of builders for each big element.

With a contractor now appointed for construction of the state's longest road tunnels, we're turning our attention to the massive overhaul of the Eastern Freeway.

We are now out to market looking for teams of builders, starting with securing a construction partner for the Burke Road to Tram Road section of the freeway.

The timing for detailed design and construction will be carefully staged so all of North East Link is open by 2028. See the timeline on the back page for more details.

## Eastern Freeway interchange and Yarra Link green bridge

A two-hectare green bridge will link Koonung Creek Trail to Bulleen Park and Yarra River parklands, connecting schools, playing fields and sports clubs. Pocket parks, landscaping and seating on top will offer views to the Yarra River and new Koonung Creek wetlands and community park below.



Artist's impression of Yarra Link green bridge, Bulleen



Artist's impression of Bulleen Park & Ride

## Bulleen Park & Ride

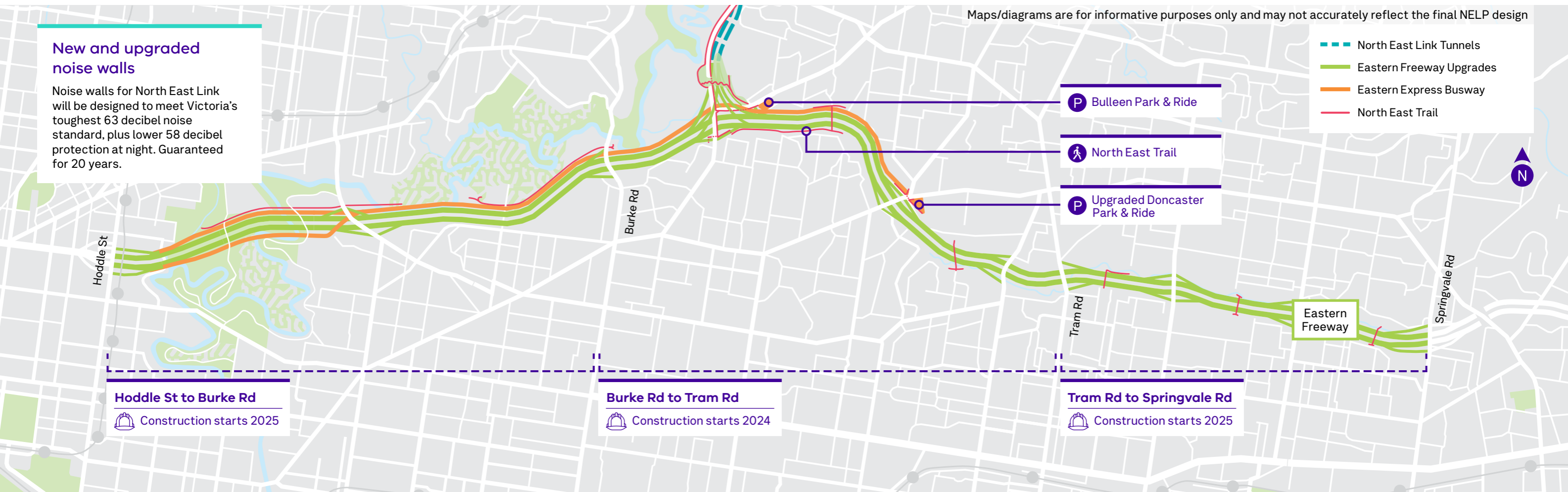
Construction is well underway for Victoria's first 5000 square metre green-roof park and ride as part of North East Link, shaving up to 30% off bus passengers' commutes along an upgraded Eastern Freeway.

Once complete, Bulleen Park & Ride will include bike storage cages, myki machines and multi-level parking for 370 cars, bike and pedestrian paths connecting the new park and ride with Koonung Creek Trail and Thompsons Road.

## New and upgraded noise walls

Noise walls for North East Link will be designed to meet Victoria's toughest 63 decibel noise standard, plus lower 58 decibel protection at night. Guaranteed for 20 years.

Maps/diagrams are for informative purposes only and may not accurately reflect the final NELP design



**Hoddle St to Burke Rd**  
Construction starts 2025

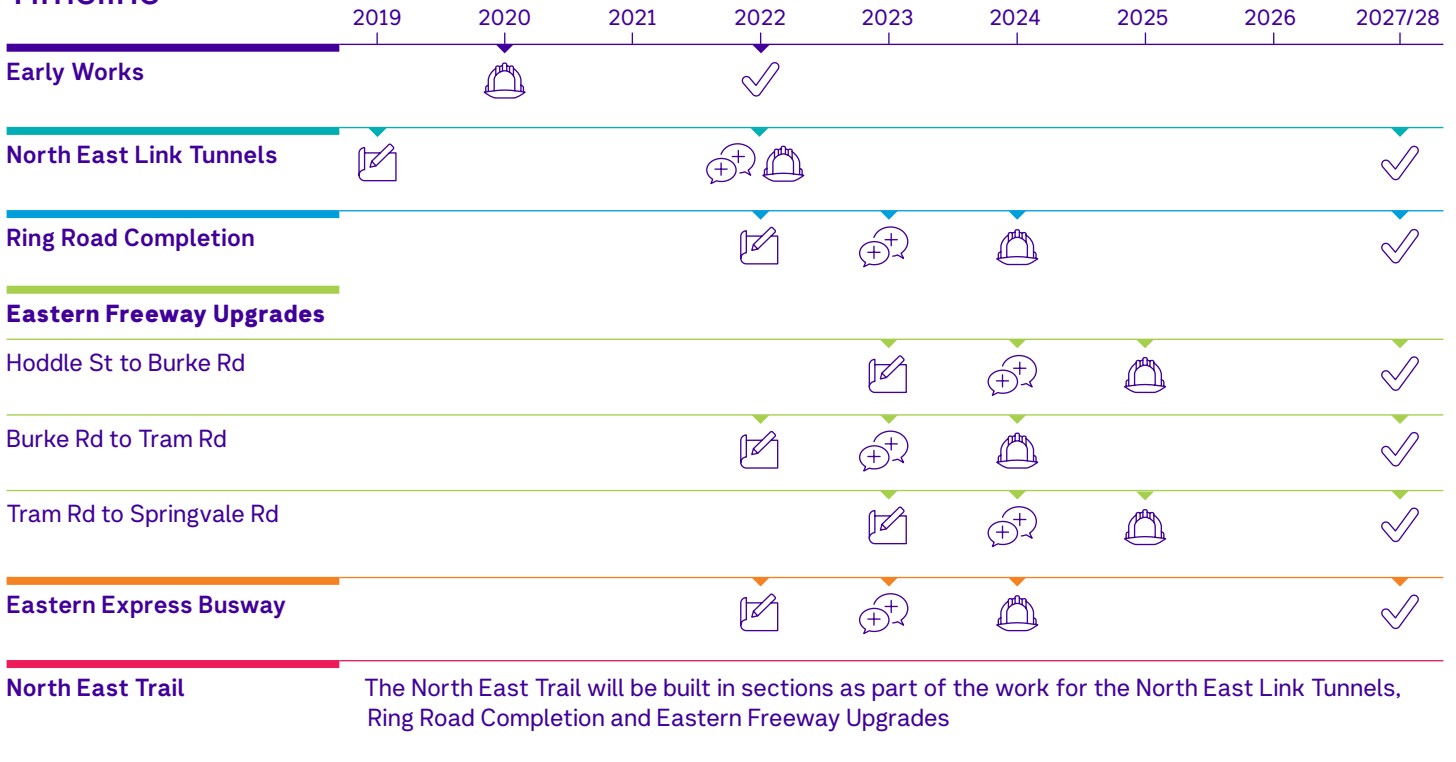
**Burke Rd to Tram Rd**  
Construction starts 2024

**Tram Rd to Springvale Rd**  
Construction starts 2025

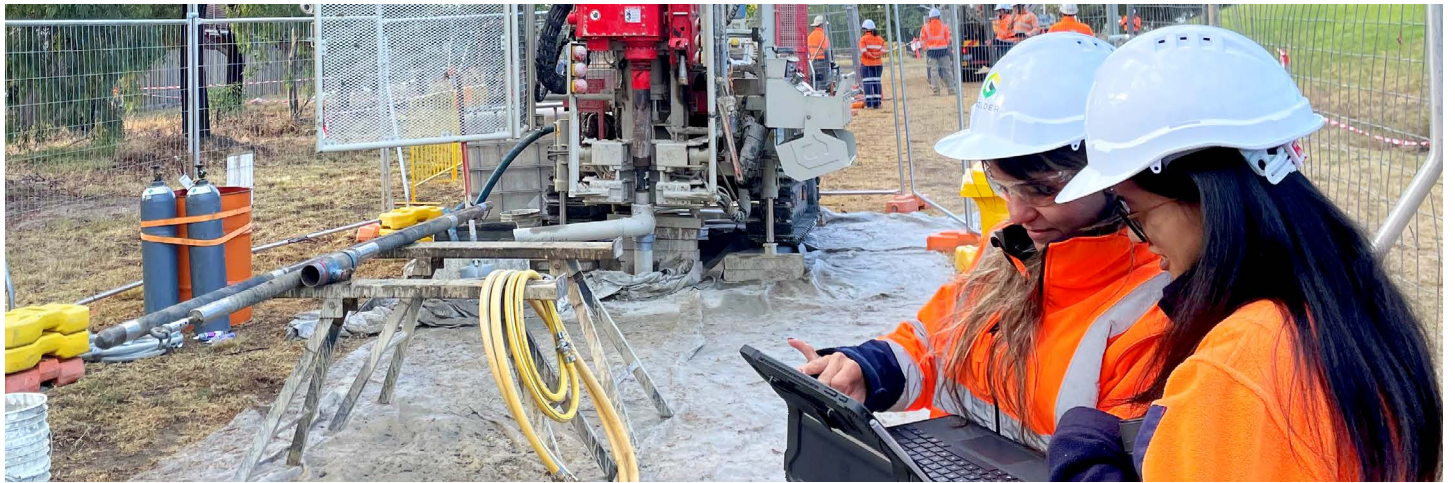
- North East Link Tunnels
- Eastern Freeway Upgrades
- Eastern Express Busway
- North East Trail

- Bulleen Park & Ride
- North East Trail
- Upgraded Doncaster Park & Ride

# Timeline



- Design/planning
- Community feedback
- Construction starts
- Completion



## We're hiring

The North East Link Program is set to create 10,000 jobs, with around 8,000 jobs on the North East Link Tunnels alone. We're now looking for people to help plan, design and build this massive program of work.

There are jobs available across engineering, sustainability, administration and commercial, along with opportunities for apprentices, trainees and cadets to kick-start their career. We're also providing access to employment opportunities through apprenticeships, traineeships and cadetships, career mentoring and advice.

One-on-one services can be accessed through the North East Link Skills and Jobs Centre.

To find out more, visit [bigbuild.vic.gov.au/jobs/working-on-north-east-link-program](http://bigbuild.vic.gov.au/jobs/working-on-north-east-link-program).

**Our Watsonia Hub and Skills & Job Centre is open.** Come see us about the project and jobs at 17 Watsonia Road, Watsonia or email [sjc@northeastlink.vic.gov.au](mailto:sjc@northeastlink.vic.gov.au). We are open Monday–Friday from 10am–5pm.

This information is current at the time of publication, however changes may occur. Please visit our website for the latest updates.

## Contact us

[community@northeastlink.vic.gov.au](mailto:community@northeastlink.vic.gov.au)

1800 105 105

NELP GPO Box 2392, Melbourne, VIC 3001  
Hub 17 Watsonia Rd, Watsonia, VIC 3087

Follow us on social media @nelpvic



Interpreter service  
For languages other than English,  
please call 03 9209 0147

Please contact us if you would like this information in an accessible format.

If you need assistance because of a hearing or speech impairment, please visit [relayservice.gov.au](http://relayservice.gov.au)