



LEVEL CROSSING REMOVAL PROJECT



*New station entrance from Montrose Street.
Artist impression only, subject to change.*

MAJOR WORKS STARTING

UNION ROAD, SURREY HILLS AND
MONT ALBERT ROAD, MONT ALBERT

JANUARY 2022

We're removing the dangerous and congested level crossings by lowering the rail line beneath the roads into an open trench and building a new premium station with better facilities and more services.

Construction is underway to remove the level crossings at **Union Road, Surrey Hills** and **Mont Albert Road, Mont Albert** and build a **new, premium station**.

Over the past few months, our crews have been busy preparing the project area so we were ready to start major works this year.

This has included setting up the site and fencing off our work areas to keep our workers and the public safe.

We're relocating underground services such as water, electricity and drainage, as well as preparing to install new services like the major electrical cables that will connect to the existing substation in Lorne Parade Reserve to power trains.

This work will ensure essential services are out of the way before we start digging the rail trench and help us keep disruption to the local community to a minimum.

It also means that some of the ageing infrastructure in streets adjacent to the rail line will be fully replaced and upgraded to modern standards.

Utility relocations and upgrades will be a significant part of our work program throughout 2022 and will involve some disruption in local streets adjacent to the rail line. This activity will also include a closure of the rail line for about two weeks in autumn. More information will be provided as the works progress.

Did you know?



There have been **2 fatalities** and at least **8 near-misses** at these crossings since 2005



The boom gates are down for **40 per cent** of the morning peak



We have installed more than **1.25km of site fencing and hoarding**



We are preparing to relocate **4.5km of underground services** (utilities and combined services route)



We are setting up to install **2.4km of drainage infrastructure**



SIGN UP FOR PROJECT UPDATES
levelcrossings.vic.gov.au

Authorised and published by the Victorian Government, 1 Treasury Place, Melbourne



HOW WE BUILD A RAIL TRENCH

Phase One

Preparing the site

Early works have begun, with the relocation of underground utilities and services to make room for the trench.

Some of the other works include:



changes around the existing station structures



temporary changes to local roads



major water main and service relocation works start



major drilling activity in Lorne Parade Reserve to prepare for works on the large water main that runs under the reserve

Phase Two

Major construction

Starting now

From early 2022 you'll start to see more construction work in and around the rail corridor.

As part of this work, we need to temporarily close the Surrey Hills Station car parks from 31 January 2022 until late 2023. Fencing and hoarding will be installed around the perimeter so our crews can work safely.

Activities in this phase include:



utility relocations and upgrades in local streets around the rail line



temporary changes to local roads depending on where we work



major water main works



using large machinery to install piles (large concrete columns) that will form the walls of the new rail trench



installing critical new rail infrastructure like power, signalling and communications cables underground.

In late March to early April, we will need to close the rail line for about two weeks so that we can safely work in the rail corridor. Buses will replace trains during this period. More information will be provided to local residents and passengers in the coming weeks.

Phase Three

Removing the level crossings

2023

In 2023 we'll undertake a major construction blitz where hundreds of workers will work around the clock to dig the trench and remove the boom gates. We'll need to shut the rail line for an extended closure to prevent rolling disruptions and ensure the job is done safely and as quickly as possible. During this time, we will also need to close Mont Albert Road and Union Road so we can build the new roads over the rail trench. The majority of works will be completed in this phase.

We'll also:



build the new premium station



lay the new tracks



remove the boom gates



build the new Union Road and Mont Albert Road bridges over the rail trench.

Phase Four

Finishing works

Late 2023, early 2024

We'll add the finishing touches to the project to:



finish the new station building



reinstate local roads, car parks and Surrey Park's north-west oval



plant 52,000 new trees, shrubs and plants.

Temporary additional rail passenger car parking will be available at Box Hill for passengers that usually park at Mont Albert and Surrey Hills. Register your interest on **1800 105 105** or **contact@levelcrossings.vic.gov.au**

Retaining more trees

We've been refining our designs and construction methods to retain more trees across the project.

Despite extensive utility works required in local streets we've been able to confine most of the vegetation removal to areas in or immediately adjacent to the rail corridor.

This has been achieved by using alternative construction methods, such as boring new paths for underground services and drainage instead of trenching.

Careful construction planning means we will retain more than **80 per cent** of the trees within the project area.

Landscaping and replanting

The project landscaping and re-vegetation plan will see more than 52,000 new trees, shrubs, plants and grasses delivered across Surrey Hills and Mont Albert.

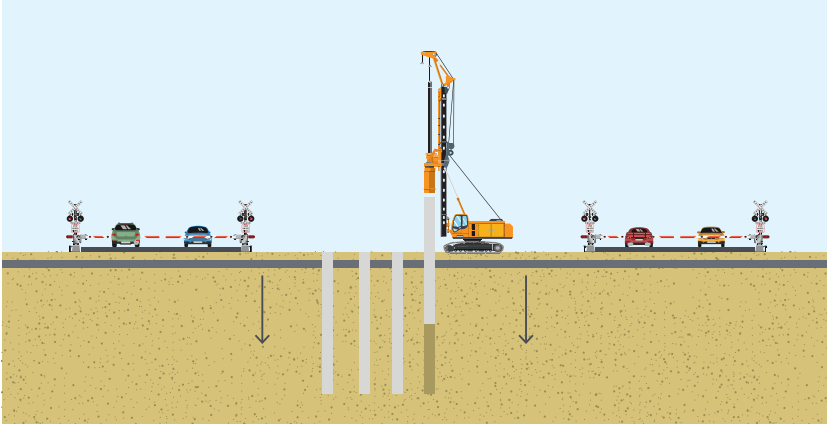
The project will plant a range of native trees, plants and grasses which don't require frequent watering. We'll also plant a mix of mature and young trees to ensure the landscaping has the maximum opportunity of growing successfully.

Some potential planting options



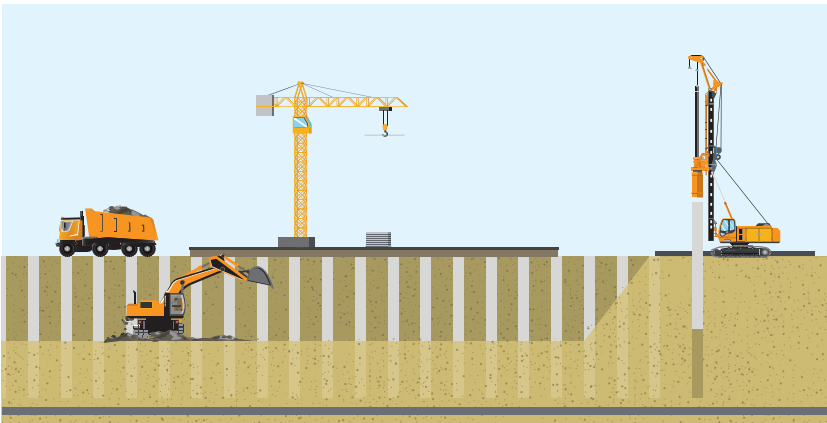
Phase Two – Major construction

Major works in 2022 will include moving underground services and drilling into the ground to build the supports for the edges of the new trench.



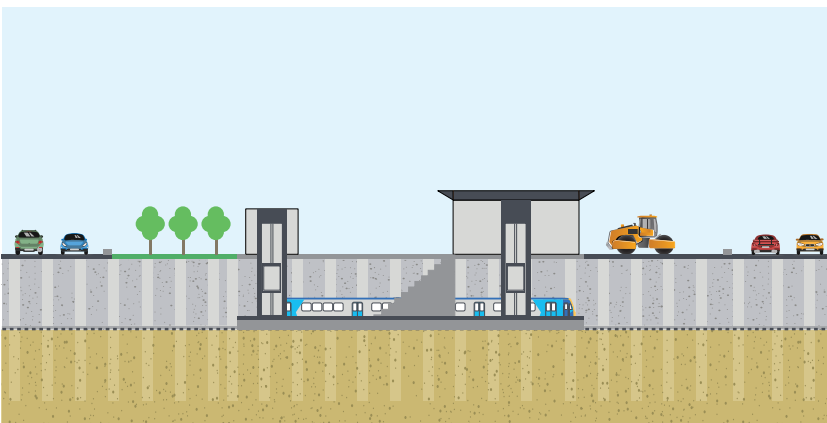
Phase Three – Removing the level crossings

As part of our major construction blitz in 2023 we will be using excavators to dig the trench, start installing the new station building and remove the boom gates.



Phase Four – Finishing works

In late 2023, early 2024 we will finish the new station building, reinstate local roads and car parks and plant 52,000 new trees, shrubs and plants.



Diagrams not to scale, for illustrative purposes only.

Thank you for your feedback

We've received over 6000 pieces of feedback from the community throughout the life of the project.

Thanks to everyone who participated in our consultation on the updated designs, which reflected feedback from extensive consultation last summer and included plans for a rejuvenated Lorne Parade Reserve.

We found that almost 70 per cent of respondents agreed that the updated Lorne Parade Reserve designs presented the right balance between open grassed area and planting. This feedback, along with ongoing detailed design work, will be incorporated into the final designs set to be released in early 2022.

We would like to thank residents, workers, business owners, community groups and passengers who submitted feedback for the new station name.

We received **over 1,300** feedback forms in October and November to help inform the new station name which will be announced in early 2022.

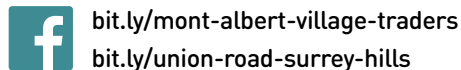
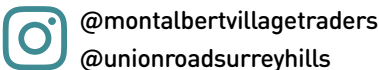


Works are on, shops are open

Shop local and support your traders

It's important to support local traders, and that's why we encourage the community and our workforce to shop local as much as possible. One of our initiatives to support traders – based on months of engagement via surveys, workshops and conversations – is the launch of two new social media channels dedicated to promoting these businesses.

To stay up to date with your local traders or find out more about upcoming promotions, follow Mont Albert Village Traders and Union Road Surrey Hills.



Union Road, Surrey Hills

Project timeline

- ✓ **Early 2021**
 - First phase of community engagement completed
- ✓ **Mid 2021**
 - Updated designs released
 - Further community engagement
 - Design enhancements released
 - Contract award announced
 - Early works begin
- **Early 2022**
 - Final designs released
 - Major construction begins
- **2023**
 - Level crossings gone for good
 - New station open

Timeline is subject to change



CONTACT US

contact@levelcrossings.vic.gov.au
1800 105 105
Level Crossing Removal Project
GPO Box 2392, Melbourne VIC 3001

Follow us on social media
@levelcrossings



Translation service – For languages other than English, please call 9209 0147.

Please contact us if you would like this information in an accessible format.

If you need assistance because of a hearing or speech impairment, please visit relayservice.gov.au