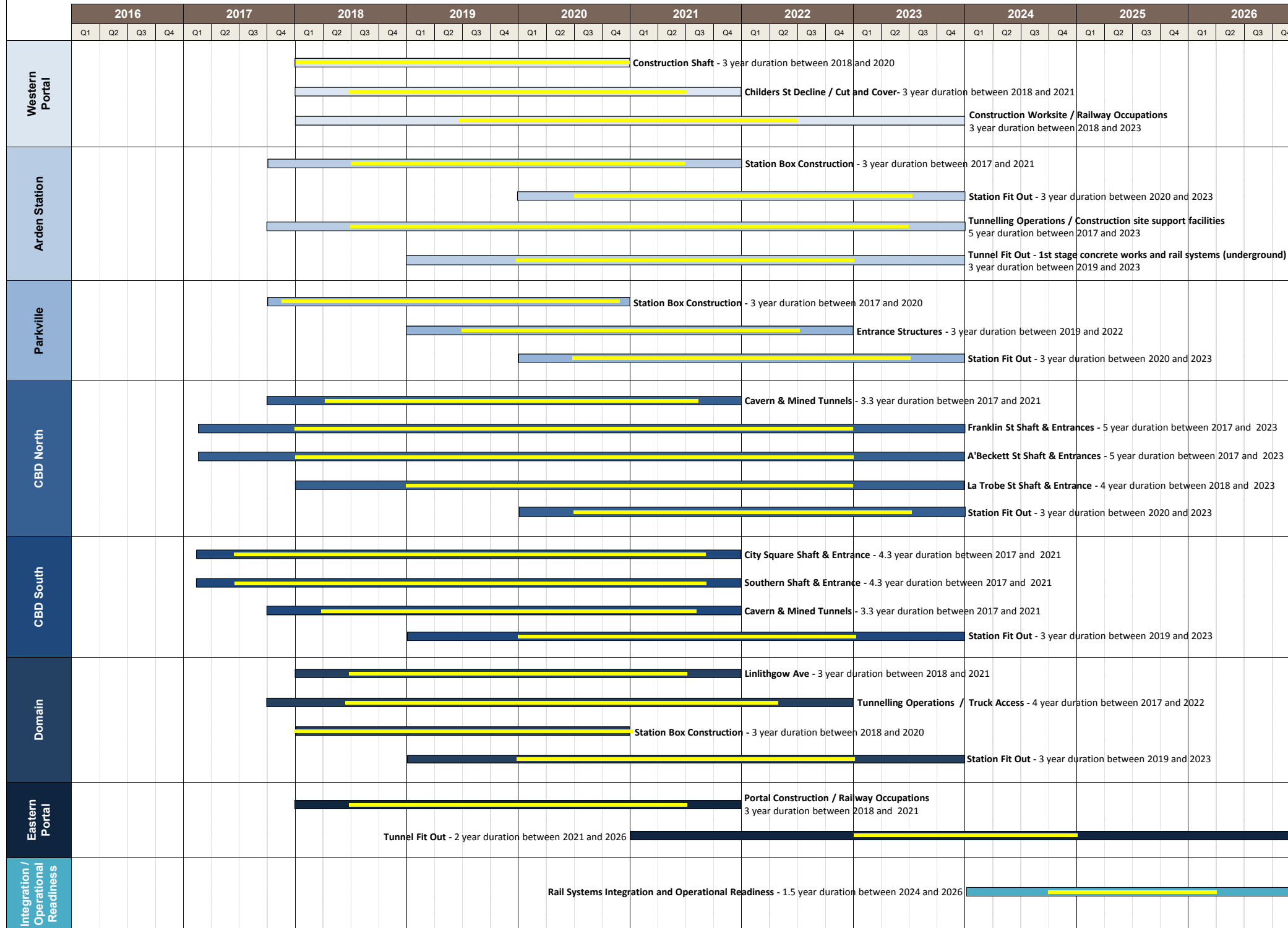


**Metro Tunnel Summary Program**  
 Provided to support Technical Note 029

Timeframes and durations are indicative only.  
 Actual timeframes and durations to be confirmed by Contractor's program.



**Legend**



Blue bars represent the indicative timeframes which are the time periods within which the construction durations would occur

Yellow bars represent the indicative construction durations which may be shorter than the overall indicative timeframes

Note - Construction of cavern at CBD South and CBD North include an additional 13 - 16 weeks as discussed in Technical Note 024