



**GOLDER**  
MEMBER OF WSP

**REPORT**

# Ambient Air Quality Monitoring (AAQM) Report June 2022

## *West Gate Tunnel Project*

Submitted to:

**Mr Tim Spawton**

CPB JH Joint Venture  
West Gate Tunnel Project  
Level 11, 5 Bowen Crescent  
Melbourne  
VIC 3004

Submitted by:

**Golder**

Building 7, Botanicca Corporate Park 570 – 588 Swan Street Richmond, Victoria 3121  
Australia

+61 3 8862 3500

1789878-047-R-Rev0

August 2022



Accreditation No. 1910

Accredited for compliance with ISO/IEC 17025 - Testing

The results of the tests, calibrations and/or measurements included in  
this document are traceable to Australian / national standards

## Record of Issue

Company	Client Contact	Version	Date Issued	Method of Delivery	Amendment
CPB JH WGT Project	Tim Spawton	Rev A	21/07/2022	Electronic	Draft
CPB JH WGT Project	Tim Spawton	Rev 0	10/08/2022	Electronic	Original

## Distribution List

1 electronic copy - CPB JH Joint Venture

1 electronic copy - Golder Associates Pty Ltd

## Executive Summary

Air quality monitoring for the West Gate Tunnel Project has been specifically established to develop a “baseline” of data from current local conditions. This baseline will be used to measure any changes once the tunnel opens. When the project opens, air quality monitoring will continue for up to 5 years.

The results of the West Gate Tunnel Project Ambient Air Quality Monitoring (AAQM) program for the period of 1 June 2022 to 30 June 2022 are presented below.

The following tables present the maximum measured concentration for each parameter at Stations 1, 2, 3, 4, 5 and 6 during the reporting period. The maximum concentration for each parameter is compared with the respective criteria.

### Station 1 Summary June 2022

Parameter	Units	Averaging period	Maximum concentration	Air quality objective <sup>A</sup>	Exceedances <sup>B</sup>
PM <sub>2.5</sub>	ug/m <sup>3</sup>	24 hour	14	25	Nil
PM <sub>10</sub>	ug/m <sup>3</sup>	24 hour	23	50	Nil

Note:

A – SEPP(AAQ) objective

B - Exceedances refers to the number of individual days the criterion was exceeded at any station

### Station 2, Station 3, Station 5 and Station 6 Summary June 2022

Parameter	Units	Averaging period	Maximum concentration				Air quality objective <sup>A</sup>	Exceedances <sup>B</sup>
			Station 2	Station 3	Station 5	Station 6		
PM <sub>2.5</sub>	ug/m <sup>3</sup>	24 hour	13	13	16	13	36	Nil
PM <sub>10</sub>	ug/m <sup>3</sup>	24 hour	39	21	30	34	60	Nil

Note:

A - SEPP(AQM) Intervention level

B - Exceedances refers to the number of individual days the criterion was exceeded at any station

### Station 4 Summary June 2022

Parameter	Units	Averaging period	Maximum concentration	Air quality objective	Exceedances <sup>C</sup>
PM <sub>2.5</sub>	ug/m <sup>3</sup>	24 hour	13	36 <sup>A</sup>	Nil
PM <sub>10</sub>	ug/m <sup>3</sup>	24 hour	30	60 <sup>A</sup>	Nil
NO <sub>2</sub>	ppb	1 hour	36	140 <sup>A</sup>	Nil
CO	ppm	1 hour	1.2	29 <sup>A</sup>	Nil
Benzene	ppb	24 hour	<0.5	3.0 <sup>B</sup>	Nil
Toluene	ppb	24 hour	<0.5	1000 <sup>B</sup>	Nil
Total xylene isomers	ppb	24 hour	<1	250 <sup>B</sup>	Nil

Note:

A - SEPP(AQM) Intervention level

B - Air NEPM Monitoring investigation level

C - Exceedances refers to the number of individual days the criterion was exceeded at any station

June 2022 ambient air quality monitoring programme results were less than the respective air quality objectives for all parameters measured at all ambient air quality stations.

Data capture statistics for June 2022 were above 90 percent for all parameters at all stations except for PM<sub>2.5</sub> at Station 5 (Donald McLean Reserve) and CO at Station 4 (Primula Avenue) due to instrument faults.

A construction area (Millers Road exit ramp and noise wall relocation) is now adjacent Station 4, as a result, the measured pollutant concentrations may not be representative of traffic emissions.

# Table of Contents

<b>1.0 INTRODUCTION .....</b>	<b>1</b>
<b>2.0 AAQMS DETAILS .....</b>	<b>2</b>
2.1 Site locations .....	2
2.2 Siting assessment .....	3
2.3 Equipment specifications .....	4
<b>3.0 AIR QUALITY CRITERIA .....</b>	<b>4</b>
SEPP (AAQ) .....	5
SEPP(AQM) .....	5
NEPM (Air Toxics) .....	5
<b>4.0 TEST METHODS .....</b>	<b>6</b>
4.1 Particulate matter (PM <sub>2.5</sub> ) .....	6
4.2 Particulate matter (PM <sub>10</sub> ) .....	6
4.3 Nitrogen dioxide (NO <sub>2</sub> ) .....	7
4.4 Carbon monoxide (CO) .....	7
4.5 Volatile organic compounds (BTEX) .....	7
4.6 Meteorological parameters .....	7
<b>5.0 MEASUREMENT UNCERTAINTY .....</b>	<b>7</b>
5.1 PM <sub>2.5</sub> .....	7
5.2 PM <sub>10</sub> .....	7
5.3 NO <sub>2</sub> .....	8
5.4 CO .....	8
5.5 Benzene .....	8
5.6 Meteorological parameters .....	8
5.7 Calibration and maintenance .....	8
<b>6.0 RESULTS .....</b>	<b>9</b>
6.1 Particulate matter (BAM PM <sub>2.5</sub> & PM <sub>10</sub> ) .....	9
6.1.1 Station 1 – Yarraville Gardens .....	10
6.1.2 Station 2 – Francis Street .....	11
6.1.3 Station 3 – Railway Reserve .....	12

6.1.4	Station 4 – Primula Avenue .....	13
6.1.5	Station 5 – Donald McLean Reserve .....	14
6.1.6	Station 6 – Millers Road .....	15
6.1.7	Combined PM <sub>2.5</sub> mass concentrations .....	16
6.2	Nitrogen dioxide (NO <sub>2</sub> ) .....	17
6.3	Carbon monoxide (CO) .....	18
6.4	Volatile organic compounds (BTEX) .....	19
6.5	Meteorological parameters .....	20
6.5.1	Ambient temperature .....	20
6.5.2	Relative humidity .....	20
6.5.3	Atmospheric pressure .....	21
6.5.4	Wind speed .....	22
6.5.5	Wind rose – Station 1 (Yarraville Gardens) .....	22
6.5.6	Wind rose – Station 2 (Francis Street) .....	23
6.5.7	Wind rose – Station 3 (Railway Reserve) .....	23
6.5.8	Wind rose – Station 4 (Primula Avenue) .....	24
6.5.9	Wind rose – Station 5 (Donald McLean Reserve) .....	24
<b>7.0</b>	<b>QUALITY ASSURANCE .....</b>	<b>25</b>
7.1	Data capture .....	25
7.2	Data validation .....	26
<b>8.0</b>	<b>DISCUSSION .....</b>	<b>26</b>
<b>9.0</b>	<b>IMPORTANT INFORMATION RELATING TO THIS REPORT .....</b>	<b>27</b>

## TABLES

Station 1 Summary June 2022 .....	ii
Station 2, Station 3, Station 5 and Station 6 Summary June 2022 .....	ii
Station 4 Summary June 2022 .....	ii
Table 1: AAQMS monitoring details .....	1
Table 2: AAQMS commissioning dates .....	2
Table 3: Australian standard AAQMS siting criteria compliance .....	3
Table 4: AAQMS instrumentation .....	4
Table 5: Air quality indicators and objectives .....	5
Table 6: Meteorological parameters measurement uncertainty .....	8

Table 7: Calibrations .....	8
Table 8: Station 1 (Yarraville Gardens AAQMS) PM <sub>2.5</sub> and PM <sub>10</sub> percentiles (24 hour average) .....	10
Table 9: Station 2 (Francis Street AAQMS) PM <sub>2.5</sub> and PM <sub>10</sub> percentiles (24 hour average) .....	11
Table 10: Station 3 (Railway Reserve AAQMS) PM <sub>2.5</sub> and PM <sub>10</sub> percentiles (24 hour average) .....	12
Table 11: Station 4 (Primula Avenue AAQMS) PM <sub>2.5</sub> and PM <sub>10</sub> percentiles (24 hour average) .....	13
Table 12: Station 5 (Donald McLean Reserve AAQMS) PM <sub>2.5</sub> and PM <sub>10</sub> percentiles (24 hour average) .....	14
Table 13: Station 6 (Millers Road AAQMS) PM <sub>2.5</sub> and PM <sub>10</sub> percentiles (24 hour average) .....	15
Table 14: Station 4 (Primula Avenue AAQMS) NO <sub>2</sub> percentiles (1 hour average) .....	17
Table 15: Station 4 (Primula Avenue AAQMS) CO percentiles (1 hour average) .....	18
Table 16: Station 4 - Primula Avenue AAQMS BTEX concentrations (24 hour average) .....	19
Table 17: Data Capture .....	25
Table 18: Station 1 Summary – June 2022 .....	26
Table 19: Station 2, Station 3, Station 5 and Station 6 Summary – June 2022 .....	26
Table 20: Station 4 Summary – June 2022 .....	27

## FIGURES

Figure 1: West Gate Tunnel AAQMS site locations .....	3
Figure 2: Station 1 PM <sub>2.5</sub> and PM <sub>10</sub> concentration (24 hour average) – June 2022 .....	10
Figure 3: Station 2 PM <sub>2.5</sub> and PM <sub>10</sub> concentration (24 Hour Average) – June 2022 .....	11
Figure 4: Station 3 PM <sub>2.5</sub> and PM <sub>10</sub> concentration (24 hour average) – June 2022 .....	12
Figure 5: Station 4 PM <sub>2.5</sub> and PM <sub>10</sub> concentration (24 hour average) – June 2022 .....	13
Figure 6: Station 5 PM <sub>2.5</sub> and PM <sub>10</sub> concentration (24 hour average) – June 2022 .....	14
Figure 7: Station 6 PM <sub>2.5</sub> and PM <sub>10</sub> concentration (24 hour average) – June 2022 .....	15
Figure 8: Combined PM <sub>2.5</sub> concentration (24 hour average) – June 2022 .....	16
Figure 9: Combined PM <sub>10</sub> concentration (24 hour average) – June 2022 .....	16
Figure 10: Station 4 NO <sub>2</sub> concentration (1 hour average) – June 2022 .....	17
Figure 11: Station 4 CO concentration (1 hour average) – June 2022 .....	18
Figure 12: Ambient temperature (1 hour average) All AAQMS – June 2022 .....	20
Figure 13: Relative humidity (1 hour average) All AAQMs – June 2022 .....	21
Figure 14: Atmospheric pressure (1 hour average) Station 4 Primula Avenue – June 2022 .....	21
Figure 15: Wind speed (1 hour average) All AAQMs – June 2022 .....	22
Figure 16: Wind speed (1 hour average) Station 1 - Yarraville Gardens .....	22
Figure 17: Wind speed (1 hour average) Station 2 - Francis Street .....	23
Figure 18: Wind speed (1 hour average) Station 3 - Railway Reserve .....	23
Figure 19: Wind speed (1 hour average) Station 4 - Primula Avenue .....	24

Figure 20: Wind speed (1 hour average) Station 5 - Donald McLean Reserve ..... 24

**APPENDICES**

**APPENDIX A**  
Data Exceptions

**APPENDIX B**  
Laboratory Certificates

**APPENDIX C**  
Important Information Relating to this Report



## 1.0 INTRODUCTION

Air quality monitoring for the West Gate Tunnel Project has been specifically established to develop a “baseline” of data from current local conditions. This baseline will be used to measure any changes once the tunnel opens. When the project opens, air quality monitoring will continue for up to 5 years.

The results of the West Gate Tunnel Project Ambient Air Quality Monitoring (AAQM) program for the period of 1 June 2022 to 30 June 2022 are contained in the following report.

The AAQM program was conducted in accordance with the Environmental Performance Requirement (EPR) AQP4 for the Project and consists of six AAQM stations (AAQMS) monitoring the following ambient air quality indicators:

- continuous measurement of particulate matter with an equivalent aerodynamic diameter less than 10 microns (PM<sub>10</sub>)
- continuous measurement of particulate matter with an equivalent aerodynamic diameter less than 2.5 microns (PM<sub>2.5</sub>)
- continuous measurement of wind speed and wind direction.

Additionally, one of the specified AAQMS (Primula Avenue) monitors the following additional air quality indicators in combination with PM<sub>10</sub> and PM<sub>2.5</sub>:

- continuous monitoring of oxides of nitrogen ([NO<sub>x</sub>] comprising of nitrogen dioxide (NO<sub>2</sub>) and nitric oxide [NO])
- continuous monitoring of carbon monoxide (CO)
- one in six day monitoring of benzene, toluene, ethylbenzene and xylene isomers (BTEX)
- continuous measurement of atmospheric pressure.

AAQMS Station 1 to Station 6 were installed and commissioned during the period 22/08/2018 to 12/10/2018. Specific installation dates can be found below in Section 2.1.

Details of the air quality indicators monitored at each AAQMS are provided in Table 1.

**Table 1: AAQMS monitoring details**

Site name	Location	Coordinates	Monitoring parameters
Station 1	Barbara Beyer Reserve, 2 Harris Street, Yarraville	-37.812730°S 144.900017°E	PM <sub>10</sub> and PM <sub>2.5</sub> Ambient temperature, relative humidity, wind speed and wind direction
Station 2	51-53 Francis Street	-37.821800°S 144.894383°E	PM <sub>10</sub> and PM <sub>2.5</sub> Ambient temperature, relative humidity, wind speed and wind direction
Station 3	Railway Lot 64, (part) 15 Goulburn Street, Yarraville	-37.814063°S 144.891320°E	PM <sub>10</sub> and PM <sub>2.5</sub> Ambient temperature, relative humidity, wind speed and wind direction
Station 4	44 Primula Avenue, Brooklyn	-37.824284°S 144.846425°E	PM <sub>10</sub> and PM <sub>2.5</sub> NO, NO <sub>2</sub> , NO <sub>x</sub> and CO BTEX – one in six day sampling (24 hour average)

Site name	Location	Coordinates	Monitoring parameters
			Ambient temperature, relative humidity, atmospheric pressure, wind speed and wind direction
Station 5	Donald McLean Reserve, Spotswood	-37.826442°S 144.882133°E	PM <sub>10</sub> and PM <sub>2.5</sub> Ambient temperature, relative humidity, atmospheric pressure, wind speed and wind direction
Station 6	44 Millers Road Brooklyn	-37.821252°S 144.848878°E	PM <sub>10</sub> and PM <sub>2.5</sub> Ambient temperature and relative humidity

## 2.0 AAQMS DETAILS

### 2.1 Site locations

AAQMS Station 1 to Station 5 were installed and commissioned during the period 22/08/2018 to 31/08/2018. AAQMS Station 6 (Millers Road) was commissioned on 12/10/2018. Meteorological sensors (wind speed and direction) were installed later due to delays in calibration from the instrument supplier. AAQMS commissioning dates are provided in Table 2. Figure 1 presents the locations of the AAQMS.

**Table 2: AAQMS commissioning dates**

Parameter	Station 1	Station 2	Station 3	Station 4	Station 5	Station 6
AAQMS	23/08/2018	22/08/2018	22/08/2018	22/08/2018	31/08/2018	12/10/2018
Wind speed & direction	07/09/2018	20/09/2018	14/09/2018	10/09/2018	17/09/2018	23/11/2018 <sup>A</sup>

A – wind sensor is not compliant with siting criteria specified in AS 3580.14

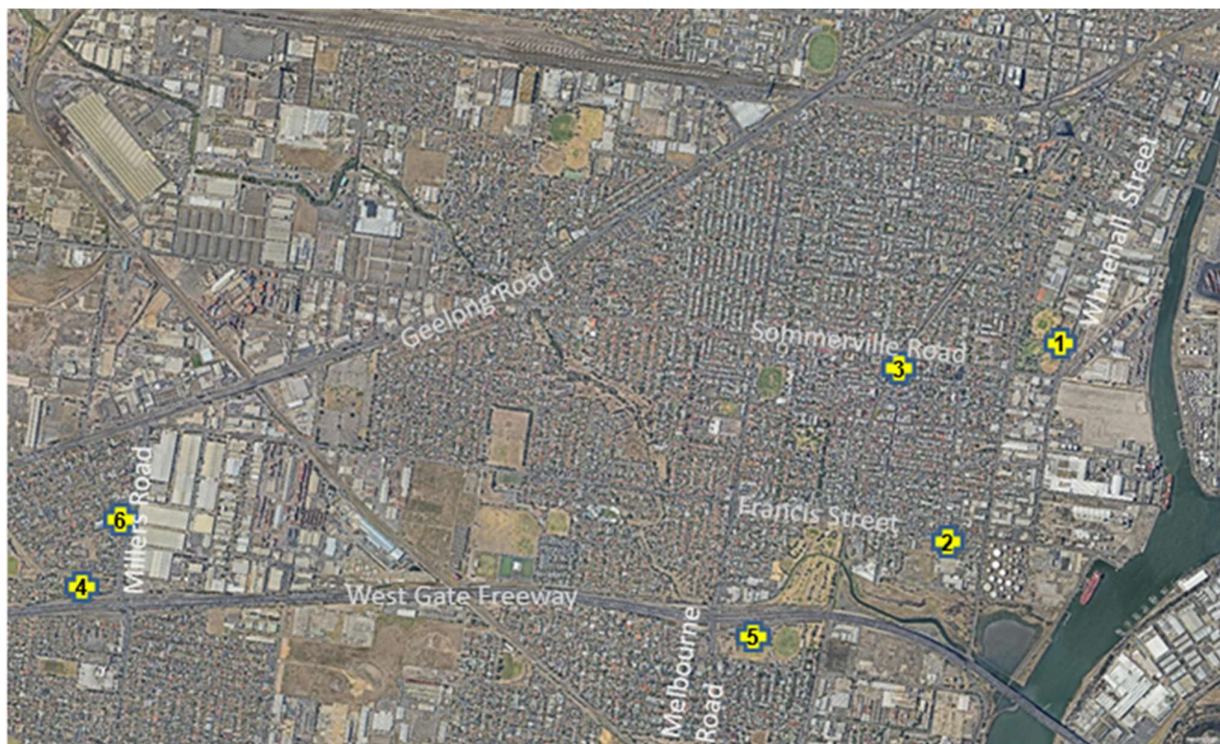


Figure 1: West Gate Tunnel AAQMS site locations

## 2.2 Siting assessment

Australian Standard AS/NZS 3580.1.1 “Methods for Sampling and Analysis of Ambient Air – Part 1.1. Guide to Siting Air Monitoring Equipment” provides general guidance for the siting of ambient air monitoring equipment and specific siting parameters for individual air pollutants. Table 3 provides a comparison between recommended criteria contained in the Standard for the parameters monitored at neighbourhood and peak monitoring stations with actual conditions at each AAQMS.

Table 3: Australian standard AAQMS siting criteria compliance

Station	Station 1	Station 2	Station 3	Station 4	Station 5	Station 6
Station type	Neighbourhood	Peak	Peak	Peak	Peak	Peak
Inlet height above ground level 1.0 m – 15 m	✓	✓	✓	✓	✓	✓
Clear sky angle 120° (Neighbourhood)	✓	-	-	-	-	-
Unrestricted 270° airflow around inlet (Neighbourhood)	✓	-	-	-	-	-
Unrestricted 180° airflow around inlet (Peak)	-	✓	✓	✓	✓	✓
Distance to supporting structure ≥ 1 m	✓	✓	✓	✓	✓	✓

Station	Station 1	Station 2	Station 3	Station 4	Station 5	Station 6
Station type	Neighbourhood	Peak	Peak	Peak	Peak	Peak
10 m from drip line of trees	✓	✓	✓	✓	✓	✗ <sup>A</sup>
No extraneous sources nearby	✓	✓	✓	✗ <sup>B</sup>	✓	✗ <sup>C</sup>
Greater than 50 m from road ( $\leq 10,000$ vehicles/day)	✓	-	-	-	-	-
Greater than 2 m from road (Peak station)	-	✓	✓	✓	✓	✓

**Note:**

- A Tree drip line is <3 m from sampler inlets and meteorological monitoring equipment  
 B Temporary construction area for Millers Road noise wall and exit ramp relocation works  
 C Residential chimney is <5 m from the sampler inlet.

## 2.3 Equipment specifications

Table 4 provides a list of the monitoring equipment installed at the AAQMS.

**Table 4: AAQMS instrumentation**

Parameter	Equipment item	Manufacturer	Model
PM <sub>2.5</sub>	Beta Attenuation Monitor (BAM)	Thermo Fisher Scientific Inc.	5014i
PM <sub>10</sub>	Beta Attenuation Monitor (BAM)	Thermo Fisher Scientific Inc.	5014i
Oxides of Nitrogen	Chemiluminescence	Thermo Fisher Scientific Inc.	42i
Carbon Monoxide	Infra-red gas filter correlation	Thermo Fisher Scientific Inc.	48i
Temperature	Pt100 resistive platinum sensor	Thermo Fisher Scientific Inc.	5014i
BTEX	Summa canister	Restek	6 litre
Relative humidity	Capacitive thin film sensor	Thermo Fisher Scientific Inc.	5014i
Atmospheric Pressure	Beta Attenuation Monitor (BAM)	Thermo Fisher Scientific Inc.	5014i
Wind speed and wind direction	Ultrasonic anemometer	RM Young	Model 86000

## 3.0 AIR QUALITY CRITERIA

The ambient air quality criteria applicable to the West Gate Tunnel Project were derived from the State Environment Protection Policies (SEPPs); Ambient Air Quality (SEPP(AAQ)), Air Quality Management (SEPP(AQM)) and the National Environment Protection (Air Toxics) Measure Monitoring Investigation Levels (MILs).

As part of the implementation of the Environment Protection Act 2017 (Act) which came into effect on 1 July 2021, the SEPP(AAQ) and SEPP(AQM) have been discontinued and some of their content has been replaced

by the “Environment Reference Standard” (ERS), publication S245. In addition, some elements of the SEPP’s will ultimately be replaced by proposed guidelines.

EPA publication 1998 - June 2021 “Compliance Code for Victoria’s Big Build Projects” states for the West Gate Tunnel Project, the obligations under Section 25(1) of the Act for General Environmental Duty (GED) are met during design and construction by complying with the West Gate Tunnel Project Environmental Performance Requirements (EPRs), which include undertaking ambient air quality monitoring in accordance with SEPP(AAQ) and SEPP(AQM). This report therefore continues to make reference to the SEPP(AAQ) and SEPP(AQM).

### SEPP (AAQ)

The SEPP(AAQ) sets out the environmental indicators and objectives for ambient air quality that seek to achieve or maintain environmental values in Victoria. The SEPP(AAQ) adopts the requirements of the *National Environment Protection (Ambient Air Quality) Measure* (Air NEPM) and its environmental quality objectives (EQOs) for CO, NO<sub>2</sub>, and particles (as PM<sub>10</sub> and PM<sub>2.5</sub>). The SEPP(AAQ) EQOs apply to air quality within a region or sub-region considered to be representative of exposure of the general population in Victoria. These objectives have been adopted for the purposes of comparison with results from background/ neighbourhood monitoring stations for the West Gate Tunnel Project and are relevant to Station 1 (Yarraville Gardens).

### SEPP(AQM)

The SEPP(AQM) sets out legislative requirements for managing and assessing air emissions in Victoria. The aim of the SEPP(AQM) is to ensure that prescribed air quality objectives are met and protect the beneficial uses of the air environment. Schedule B lists intervention levels which are used in the assessment of local or neighbourhood air monitoring data. Consistent with assessment of impacts described in the Environment Effects Statement for the West Gate Tunnel Project, the SEPP(AQM) intervention levels will continue to be adopted for purposes of comparison with results from peak monitoring stations for the West Gate Tunnel Project. These EQOs are applicable to Station 2 (Francis Street), Station 3 (Railway Reserve), Station 4 (Primula Avenue), Station 5 (Donald McLean Reserve) and Station 6 (Millers Road).

### NEPM (Air Toxics)

The aim of the Air Toxics NEPM is to gain a greater understanding of the levels of air toxics at specific locations where elevated concentrations are likely to occur and where the potential for significant human exposure exists. The Air Toxics NEPM established monitoring investigation levels (MILs) relevant for the West Gate Tunnel Project for benzene, toluene and xylene isomers. The MILs are used purposes of comparison with results from the air toxics monitored at Station 4 (Primula Avenue). Table 5 presents the air quality indicators and objectives for each AAQMS for the West Gate Tunnel Project.

**Table 5: Air quality indicators and objectives**

Location	Pollutant	Units	Air Quality Objective	Averaging period
Station 1	PM <sub>10</sub>	µg/m <sup>3</sup>	50	24 hour
			20	Annual
	PM <sub>2.5</sub>		25	24 hour
			8	Annual

Location	Pollutant	Units	Air Quality Objective	Averaging period
Station 2 Station 3 Station 4 Station 5 Station 6	PM <sub>10</sub>	µg/m <sup>3</sup>	60	24 hour
	PM <sub>2.5</sub>		36	
Station 4	CO	ppm	29	1 hour
	NO <sub>2</sub>	ppb	140	1 hour
	Benzene	ppb	3	Annual
	Toluene	ppb	1000	24 hour
			100	Annual
	Ethylbenzene	ppb	NA	24 hour
	Xylene isomers	ppb	250	24 hour
			200	Annual

## 4.0 TEST METHODS

### 4.1 Particulate matter (PM<sub>2.5</sub>)

PM<sub>2.5</sub> concentrations are determined using a Beta Attenuation Monitor (BAM).

Suspended particulate matter in ambient air is measured using the attenuation of beta rays as a surrogate for continuous mass determination. Beta rays are high energy electrons generated from the radioactive decay of the radon isotope Rn-222. When contacting particulate matter beta rays are either absorbed or their energy level is diminished. The relationship between the attenuation of beta rays between the source and detector is used to determine the mass density.

The BAM is equipped with a flow control and measurement system. The flow control system volumetrically controls the flowrate to 16.7 l/min. The flowrate is used with the mass density to calculate the particulate matter concentration.

The sampler is fitted with a size selective inlet, which separates particles with an equivalent aerodynamic diameter greater than 10 microns from the sample stream. An in-line PM<sub>2.5</sub> particle size separator is also fitted to further separate particles; only those with an equivalent aerodynamic diameter less than 2.5 microns can pass through the particle size separator to the filter for mass determination.

The PM<sub>2.5</sub> monitoring method is based on the requirements contained within Australian Standard AS/NZS 3580.9.12 "Methods for Sampling and Analysis of Ambient Air – Method 9.12: Determination of Suspended Particulate Matter – PM<sub>2.5</sub> Beta Attenuation Monitors" (NATA Laboratory Accreditation No. 1910).

### 4.2 Particulate matter (PM<sub>10</sub>)

PM<sub>10</sub> concentrations are determined using a continuous BAM without an in-line PM<sub>2.5</sub> particle size separator. All other measurement processes remain the same as for the PM<sub>2.5</sub> test method.



The PM<sub>10</sub> monitoring method is based on the requirements contained within Australian Standard AS/NZS 3580.9.11:2016 “*Methods for Sampling and Analysis of Ambient Air – Method 9.11: Determination of Suspended Particulate Matter – PM<sub>10</sub> Beta Attenuation Monitors*” (NATA Laboratory Accreditation No. 1910).

### 4.3 Nitrogen dioxide (NO<sub>2</sub>)

Oxides of nitrogen concentrations were determined using a 42i Thermo Scientific chemiluminescence gas analyser.

Automatic calibrations are carried out daily against a NATA certified reference gas mixture. Manual calibrations are conducted at one month intervals.

The oxides of nitrogen (NO, NO<sub>2</sub> and NO<sub>x</sub>) monitoring method is based on the requirements of Australian Standard AS 3580.5.1, “*Determination of Oxides of Nitrogen – Chemiluminescence Method*”.

### 4.4 Carbon monoxide (CO)

Carbon monoxide concentrations are determined using a 48i Thermo Scientific infra-red gas filter correlation analyser.

Automatic calibrations are carried out daily against a NATA certified reference gas mixture. Manual calibrations are conducted at one month intervals.

The carbon monoxide monitoring method is based on the requirements of Australian Standard AS 3580.7.1, “*Determination of Carbon Monoxide – Direct Reading Instrumental Method*”.

### 4.5 Volatile organic compounds (BTEX)

A sample is collected in an evacuated electro-polished and passivated stainless steel canister. Analysis involves separation by gas chromatography (GC) and measurement by mass selective (MS) detector.

The procedure for sampling Volatile Organic Compounds (VOCs) using evacuated canisters, and for the subsequent analysis, is described in USEPA Method TO-15 “*Determination of Volatile Organic Compounds (VOCs) in air collected in specially-prepared canisters and analysed by Gas Chromatography/Mass Spectrometry (GC/MS)*”.

Samples were analysed by Queensland Health (NATA Laboratory Accreditation No. 41) based on USEPA method TO-15. The test method used was in accordance with Golder Source Test Method C9, “*Canister (Evacuated) Sampling for VOC: In Ambient Air and Source Emissions*”.

### 4.6 Meteorological parameters

Monitoring of meteorological parameters; wind speed/direction, temperature, relative humidity, solar radiation and rainfall was conducted in accordance with Australian Standard AS 3580.14 “*Methods for Sampling and Analysis of Ambient Air – Part 14: Meteorological Monitoring for Ambient Air Quality Monitoring Applications*” (NATA Laboratory Accreditation No. 1910).

## 5.0 MEASUREMENT UNCERTAINTY

### 5.1 PM<sub>2.5</sub>

The measurement uncertainty for PM<sub>2.5</sub> by BAM is published by Thermo-Fisher as ±2 µg/m<sup>3</sup> (24 hour average).

### 5.2 PM<sub>10</sub>

The measurement uncertainty for PM<sub>2.5</sub> by BAM is published by Thermo-Fisher as ±2 µg/m<sup>3</sup> (24 hour average).

### 5.3 NO<sub>2</sub>

The measurement uncertainty for NO, NO<sub>2</sub> and NO<sub>x</sub> by Chemiluminescence is published in AS3580.5.1 as  $\pm 10\%$  (24 hour average).

### 5.4 CO

The measurement uncertainty for CO by Infra-red gas filter correlation is published in AS3580.7.1 as  $\pm 10\%$  (24 hour average).

### 5.5 Benzene

USEPA Method TO-15 cites the accuracy and precision for two ambient air quality studies conducted in the United States of America. The average replicate precision for a range of 16 compounds in both studies was 15%. Replicate precision was defined as the ratio of the average difference between replicates to the average value of replicates.

The reported accuracies for both studies ranged between  $\pm 4\%$  and  $\pm 31\%$ . The average accuracy for both studies for the range of 16 compounds was  $\pm 11\%$ . Accuracy is defined as the ratio of the difference between expected and observed audit results to the expected audit result.

### 5.6 Meteorological parameters

The estimated measurement uncertainty for each of the parameters is presented in Table 6.

**Table 6: Meteorological parameters measurement uncertainty**

Parameter	Measurement uncertainty <sup>A</sup>
Wind speed	Greater of $\pm 0.6$ m/s or 5%
Wind direction	$\pm 5^\circ$
Barometric pressure	$\pm 3$ hPa
Temperature	$\pm 6\%$
Relative humidity	$\pm 5 - 7\%$ RH

**Note:**

<sup>A</sup> Measurement uncertainty estimates are as published in AS3580.14 "Methods for Sampling and Analysis of Ambient Air – Part 14 Meteorological Monitoring for Ambient Air Quality Monitoring Applications".

### 5.7 Calibration and maintenance

Sample flow rate calibration was conducted on a monthly basis using a NATA calibrated primary standard flowmeter. Calibration details for the reporting period are presented in Table 7.

**Table 7: Calibrations**

Location	Parameter	Last Calibration Date	Calibration Type
Station 1	PM <sub>10</sub>	29/06/2022	3 monthly
	PM <sub>2.5</sub>	29/06/2022	3 monthly
	Wind speed and direction	17/08/2020	Two yearly
Station 2	PM <sub>10</sub>	29/06/2022	3 monthly
	PM <sub>2.5</sub>	29/06/2022	3 monthly



Location	Parameter	Last Calibration Date	Calibration Type
	Wind speed and direction	30/07/2020	Two yearly
Station 3	PM <sub>10</sub>	30/06/2022	3 monthly
	PM <sub>2.5</sub>	30/06/2022	3 monthly
	Wind speed and direction	15/09/2020	Two yearly
Station 4	PM <sub>10</sub>	30/06/2022	3 monthly
	PM <sub>2.5</sub>	30/06/2022	3 monthly
	NO/ NO <sub>2</sub> / NO <sub>x</sub>	30/06/2022	3 monthly
	CO	30/06/2022	3 monthly
	BTEX	NA	Flow-controllers and canisters certified by lab
	Wind speed and direction	24/08/2020	Two yearly
Station 5	PM <sub>10</sub>	29/06/2022	3 monthly
	PM <sub>2.5</sub>	29/06/2022	3 monthly
	Wind speed and direction	05/09/2020	Two yearly
Station 6	PM <sub>10</sub>	30/06/2022	3 monthly
	PM <sub>2.5</sub>	30/06/2022	3 monthly

## 6.0 RESULTS

The monitoring results for 1 June 2022 to 30 June 2022 are presented in the following sections.

### 6.1 Particulate matter (BAM PM<sub>2.5</sub> & PM<sub>10</sub>)

PM<sub>2.5</sub> and PM<sub>10</sub> were continuously monitored and 5-minute averages logged. The 5-minute average data was transformed to 24 hour averages for reporting.

PM<sub>2.5</sub> and PM<sub>10</sub> concentration statistics from the reporting period for Station 1 to Station 6 are presented in Table 8 to Table 13. The 24 hour average plots for Station 1 to Station 6 are presented in Figure 2 to Figure 7.

### 6.1.1 Station 1 – Yarraville Gardens

Table 8: Station 1 (Yarraville Gardens AAQMS) PM<sub>2.5</sub> and PM<sub>10</sub> percentiles (24 hour average)

Parameter	Concentration (µg/m <sup>3</sup> ) <sup>A</sup>							Air quality objective <sup>B</sup>
	Maximum	99 <sup>th</sup>	98 <sup>th</sup>	95 <sup>th</sup>	90 <sup>th</sup>	75 <sup>th</sup>	50 <sup>th</sup>	(µg/m <sup>3</sup> )
PM <sub>2.5</sub>	14	14	13	13	11	7.1	4.6	25
PM <sub>10</sub>	23	22	22	20	17	11	8.4	50

**Note:**

A Micrograms per cubic metre at 0°C and 101.3 kPa

B SEPP(AAQ) Objective

Values rounded to two significant figures.

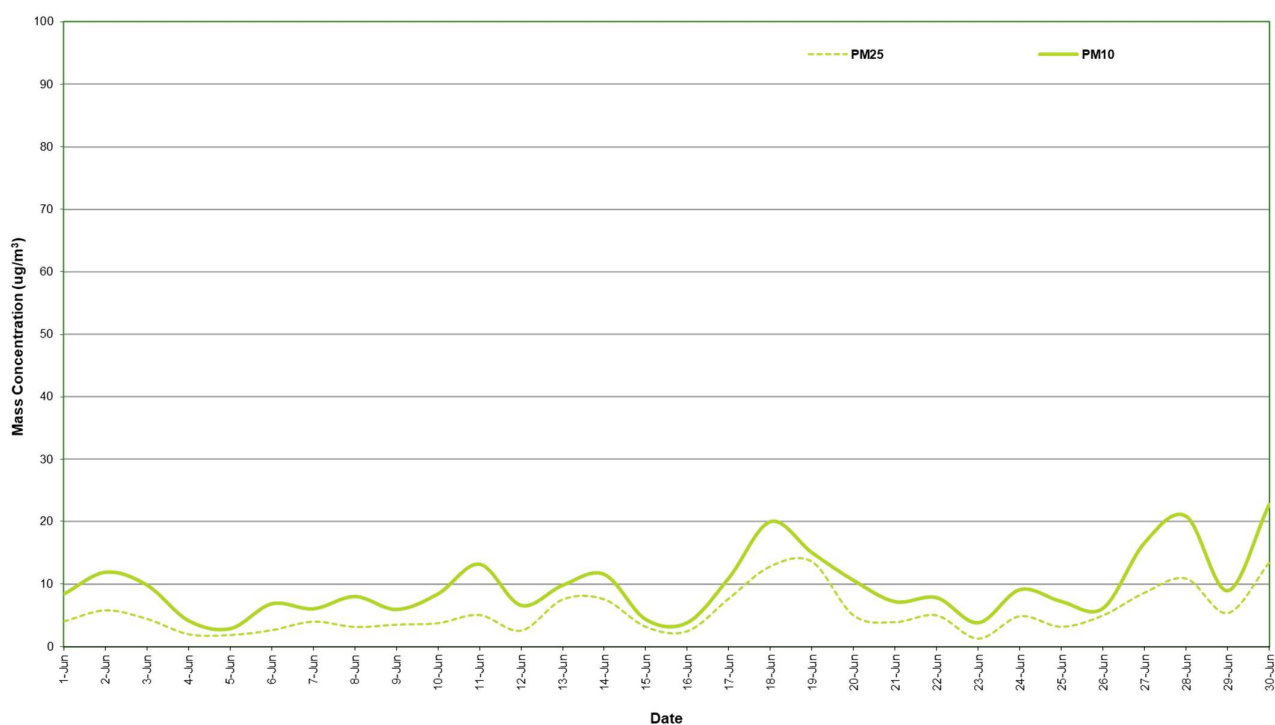


Figure 2: Station 1 PM<sub>2.5</sub> and PM<sub>10</sub> concentration (24 hour average) – June 2022

### 6.1.2 Station 2 – Francis Street

Table 9: Station 2 (Francis Street AAQMS) PM<sub>2.5</sub> and PM<sub>10</sub> percentiles (24 hour average)

Parameter	Concentration (µg/m <sup>3</sup> ) <sup>A</sup>							Air quality objective <sup>B</sup>
	Maximum	99 <sup>th</sup>	98 <sup>th</sup>	95 <sup>th</sup>	90 <sup>th</sup>	75 <sup>th</sup>	50 <sup>th</sup>	(µg/m <sup>3</sup> )
PM <sub>2.5</sub>	13	13	13	13	12	7.7	5.9	36
PM <sub>10</sub>	39	37	35	29	24	19	16	60

**Note:**

A Micrograms per cubic metre at 0°C and 101.3 kPa

B SEPP(AQM) Intervention level

Values rounded to two significant figures.

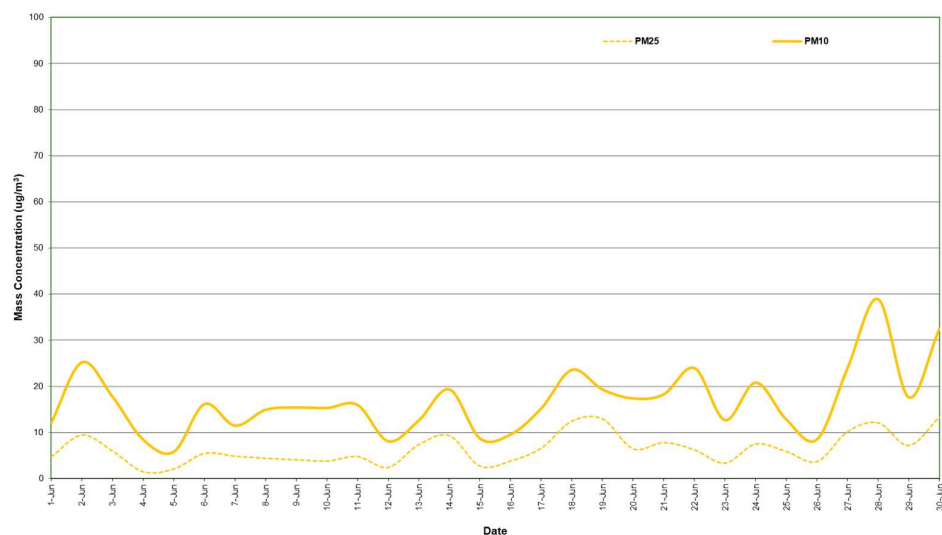


Figure 3: Station 2 PM<sub>2.5</sub> and PM<sub>10</sub> concentration (24 Hour Average) – June 2022

### 6.1.3 Station 3 – Railway Reserve

Table 10: Station 3 (Railway Reserve AAQMS) PM<sub>2.5</sub> and PM<sub>10</sub> percentiles (24 hour average)

Parameter	Concentration (µg/m <sup>3</sup> ) <sup>A</sup>							Air quality objective <sup>B</sup>
	Maximum	99 <sup>th</sup>	98 <sup>th</sup>	95 <sup>th</sup>	90 <sup>th</sup>	75 <sup>th</sup>	50 <sup>th</sup>	(µg/m <sup>3</sup> )
PM <sub>2.5</sub>	13	13	13	12	10	6.3	4.6	36
PM <sub>10</sub>	21	21	21	20	18	13	10	60

**Note:**

A Micrograms per cubic metre at 0°C and 101.3 kPa

B SEPP(AQM) Intervention level

Values rounded to two significant figures.

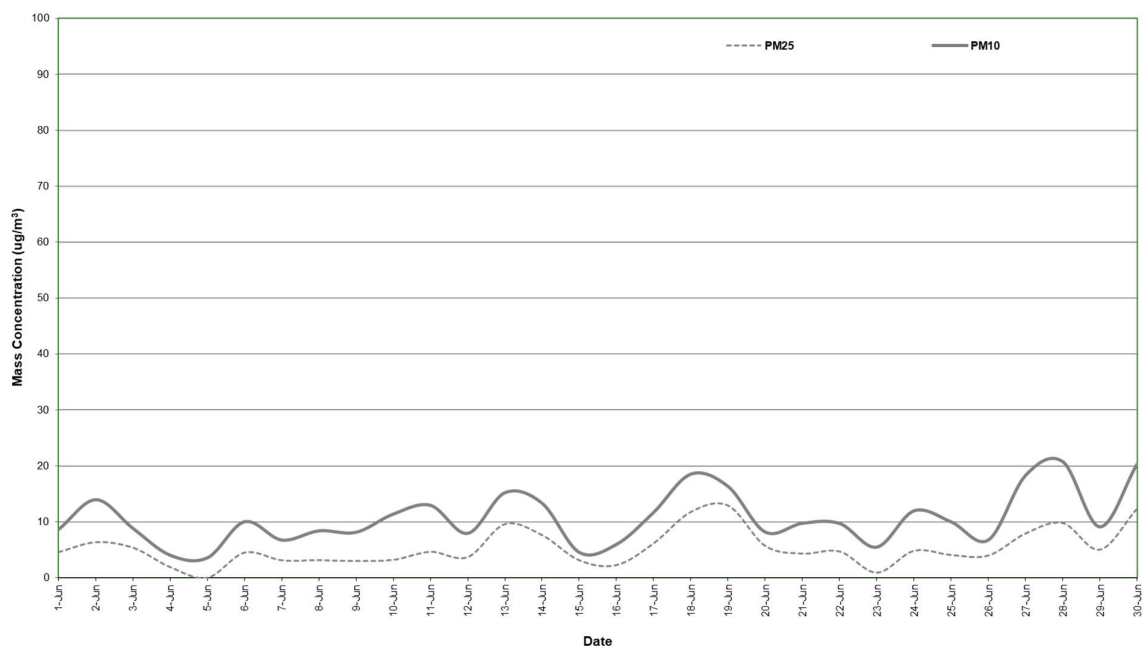


Figure 4: Station 3 PM<sub>2.5</sub> and PM<sub>10</sub> concentration (24 hour average) – June 2022

### 6.1.4 Station 4 – Primula Avenue

Table 11: Station 4 (Primula Avenue AAQMS) PM<sub>2.5</sub> and PM<sub>10</sub> percentiles (24 hour average)

Parameter	Concentration (µg/m <sup>3</sup> ) <sup>A</sup>							Air quality objective <sup>B</sup>
	Maximum	99 <sup>th</sup>	98 <sup>th</sup>	95 <sup>th</sup>	90 <sup>th</sup>	75 <sup>th</sup>	50 <sup>th</sup>	(µg/m <sup>3</sup> )
PM <sub>2.5</sub>	13	13	13	13	9.4	7.2	5.0	36
PM <sub>10</sub>	30	29	27	24	20	18	14	60

**Note:**

A Micrograms per cubic metre at 0°C and 101.3 kPa

B SEPP(AQM) Intervention level

Values are rounded to two significant figures.

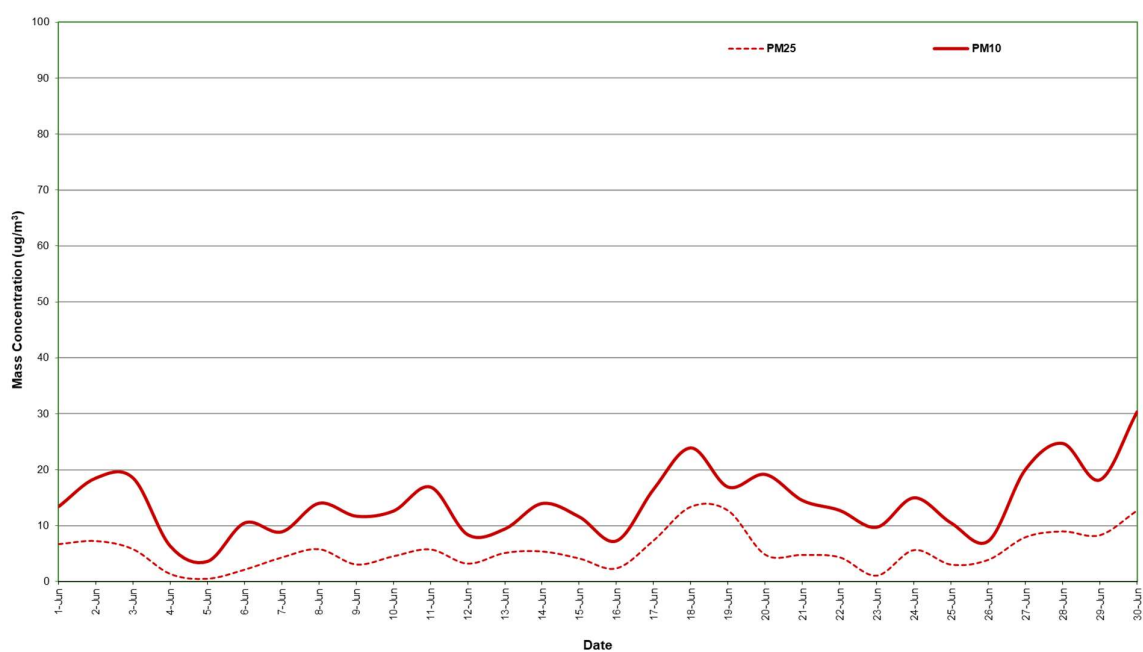


Figure 5: Station 4 PM<sub>2.5</sub> and PM<sub>10</sub> concentration (24 hour average) – June 2022

### 6.1.5 Station 5 – Donald McLean Reserve

Table 12: Station 5 (Donald McLean Reserve AAQMS) PM<sub>2.5</sub> and PM<sub>10</sub> percentiles (24 hour average)

Parameter	Concentration (µg/m <sup>3</sup> ) <sup>A</sup>							Air quality objective <sup>B</sup>
	Maximum	99 <sup>th</sup>	98 <sup>th</sup>	95 <sup>th</sup>	90 <sup>th</sup>	75 <sup>th</sup>	50 <sup>th</sup>	(µg/m <sup>3</sup> )
PM <sub>2.5</sub>	16	16	15	14	14	7.4	5.4	36
PM <sub>10</sub>	30	28	26	22	21	17	12	60

**Note:**

A Micrograms per cubic metre at 0°C and 101.3 kPa

B SEPP(AQM) Intervention level

Values rounded to two significant figures.

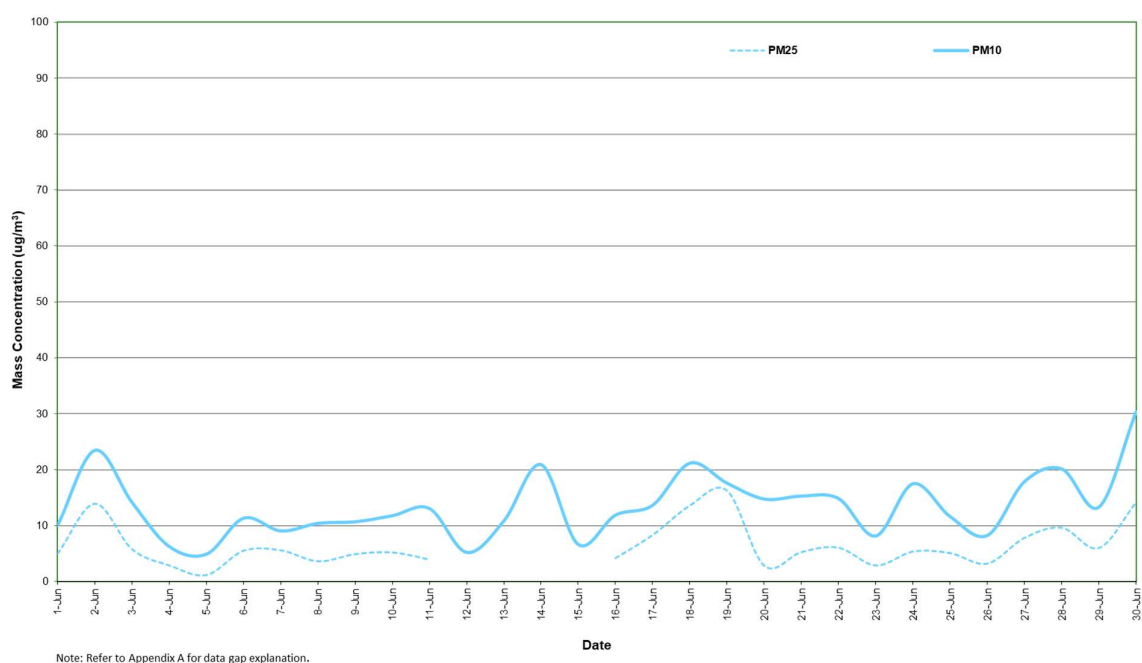


Figure 6: Station 5 PM<sub>2.5</sub> and PM<sub>10</sub> concentration (24 hour average) – June 2022

### 6.1.6 Station 6 – Millers Road

Table 13: Station 6 (Millers Road AAQMS) PM<sub>2.5</sub> and PM<sub>10</sub> percentiles (24 hour average)

Parameter	Concentration (µg/m <sup>3</sup> ) <sup>A</sup>							Air quality objective <sup>B</sup> (µg/m <sup>3</sup> )
	Maximum	99 <sup>th</sup>	98 <sup>th</sup>	95 <sup>th</sup>	90 <sup>th</sup>	75 <sup>th</sup>	50 <sup>th</sup>	
PM <sub>2.5</sub>	13	13	12	11	10	6.2	4.4	36
PM <sub>10</sub>	34	34	33	32	29	21	13	60

**Note:**

A Micrograms per cubic metre at 0°C and 101.3 kPa

B SEPP(AQM) Intervention level

Values rounded to two significant figures.

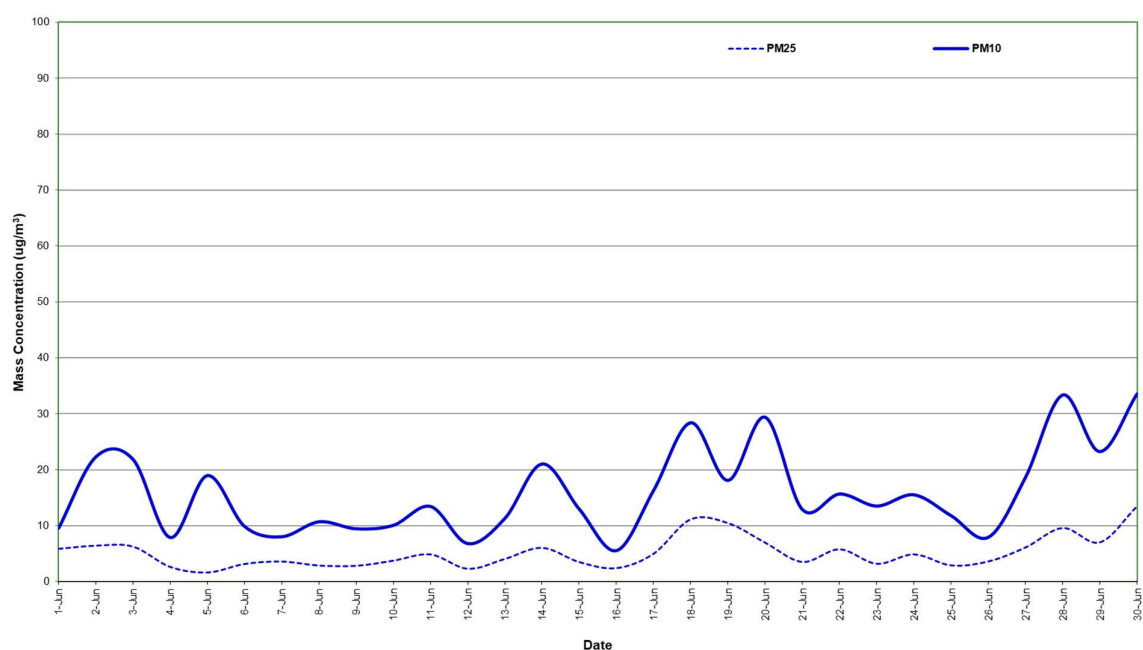


Figure 7: Station 6 PM<sub>2.5</sub> and PM<sub>10</sub> concentration (24 hour average) – June 2022

### 6.1.7 Combined PM<sub>2.5</sub> mass concentrations

Combined plots of the AAQMS PM<sub>2.5</sub> and PM<sub>10</sub> are presented in Figure 8 and Figure 9 respectively.

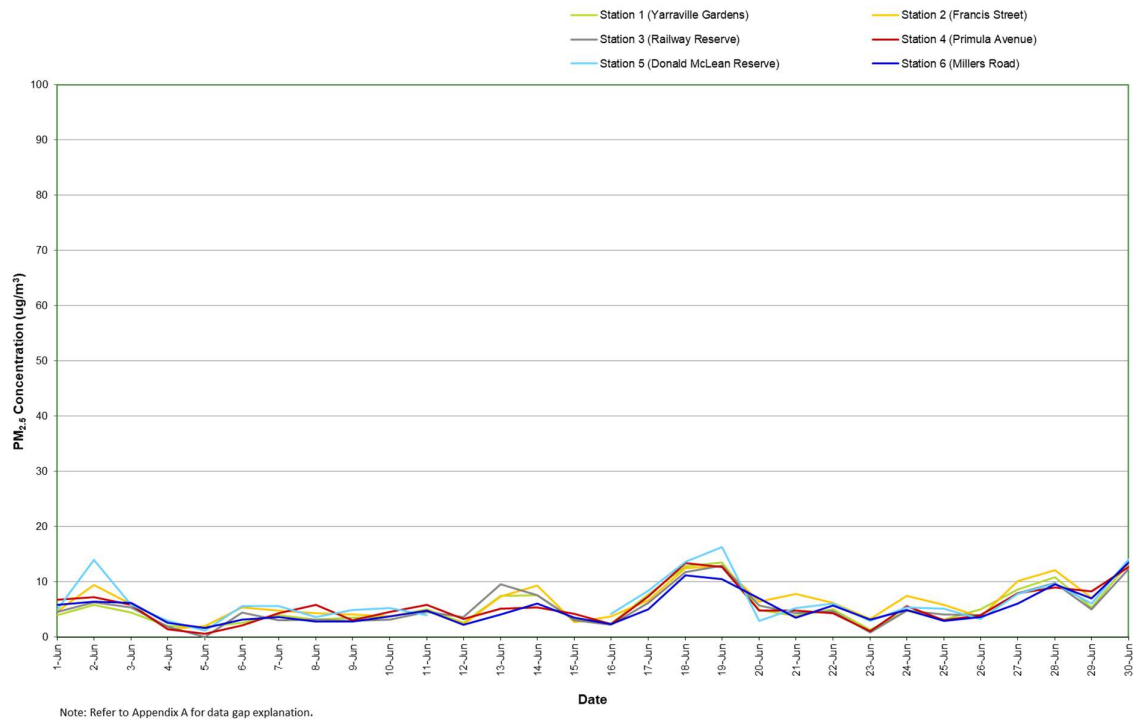


Figure 8: Combined PM<sub>2.5</sub> concentration (24 hour average) – June 2022

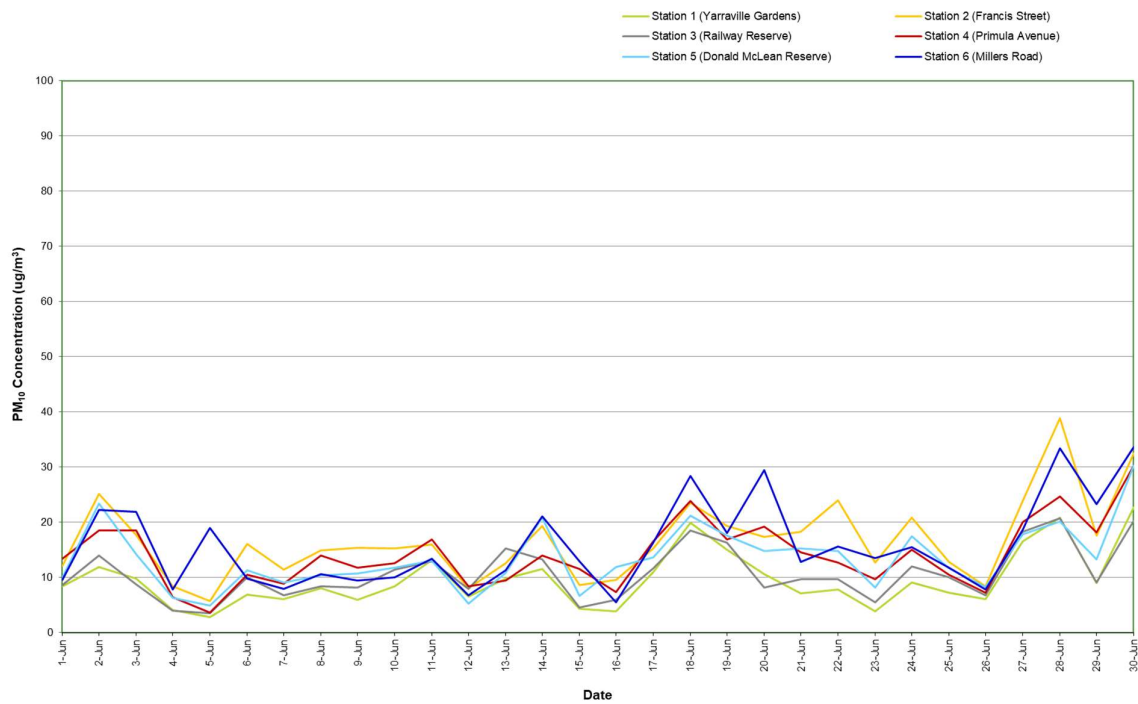


Figure 9: Combined PM<sub>10</sub> concentration (24 hour average) – June 2022



## 6.2 Nitrogen dioxide (NO<sub>2</sub>)

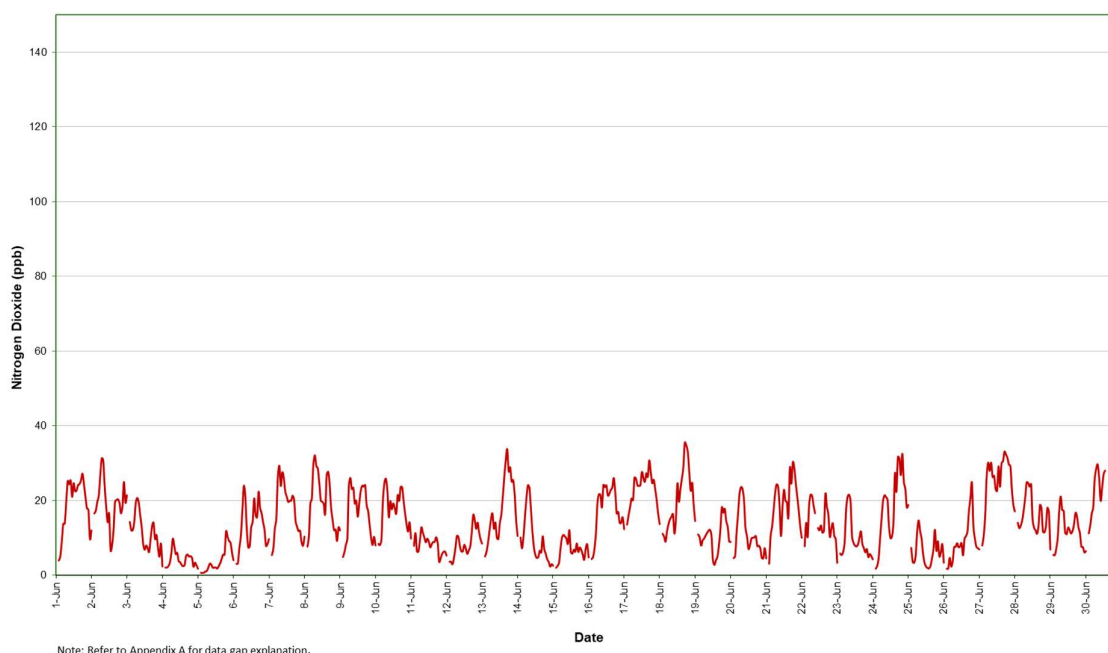
NO<sub>2</sub> (1 hour average) mass concentration statistics for the reporting period are given in Table 14. A plot of NO<sub>2</sub> (1 hour average) mass concentration for the reporting period is presented in Figure 10.

**Table 14: Station 4 (Primula Avenue AAQMS) NO<sub>2</sub> percentiles (1 hour average)**

Parameter	Concentration (ppb) <sup>A</sup>							SEPP (AQM) intervention level
	Maximum	99 <sup>th</sup>	98 <sup>th</sup>	95 <sup>th</sup>	90 <sup>th</sup>	75 <sup>th</sup>	50 <sup>th</sup>	(ppb)
NO <sub>2</sub>	36	32	31	29	26	21	13	140

**Note:**

A Parts per billion



**Figure 10: Station 4 NO<sub>2</sub> concentration (1 hour average) – June 2022**

### 6.3 Carbon monoxide (CO)

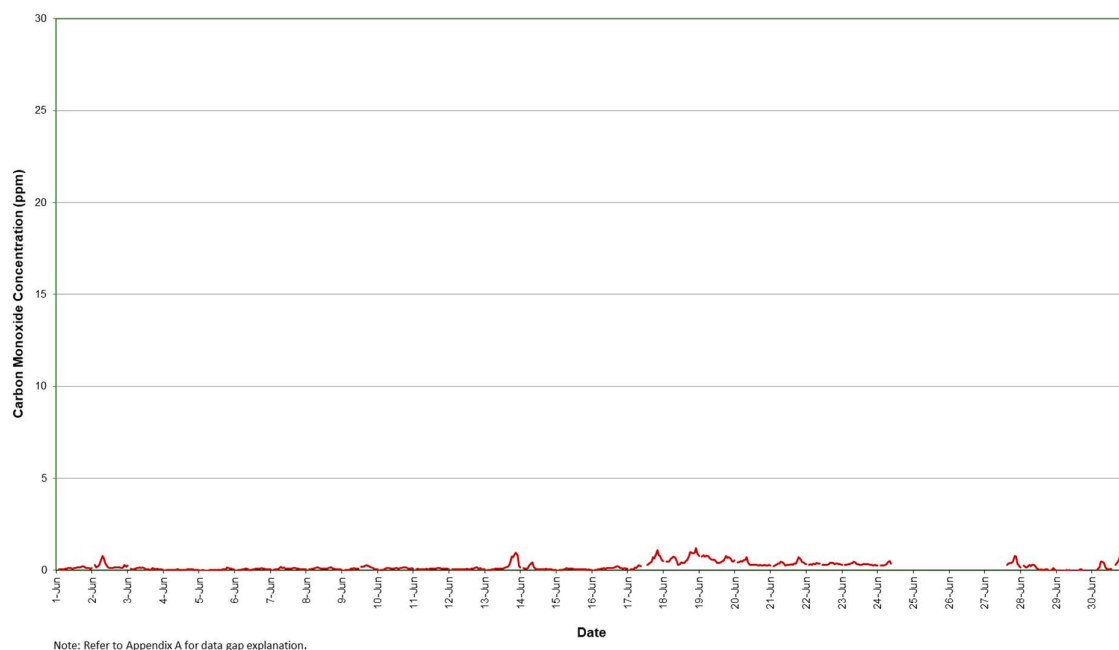
CO (1 hour average) mass concentration statistics for the reporting period are given in Table 15. A plot of CO (1 hour average) concentration for the reporting period is presented in Figure 11.

**Table 15: Station 4 (Primula Avenue AAQMS) CO percentiles (1 hour average)**

Parameter	Concentration (ppm) <sup>A</sup>							SEPP (AQM) intervention level
	Maximum	99 <sup>th</sup>	98 <sup>th</sup>	95 <sup>th</sup>	90 <sup>th</sup>	75 <sup>th</sup>	50 <sup>th</sup>	(ppm)
CO	1.2	0.97	0.82	0.70	0.49	0.30	0.11	29

**Note:**

A Parts per million



Note: Refer to Appendix A for data gap explanation.

**Figure 11: Station 4 CO concentration (1 hour average) – June 2022**

## 6.4 Volatile organic compounds (BTEX)

VOC samples were collected from Station 4 (Primula Avenue), in an evacuated electro-polished and passivated stainless steel canister. Analysis involves separation by gas chromatography (GC) and measurement by mass selective (MS) detector

The procedure for sampling Volatile Organic Compounds (VOCs) using evacuated canisters, and for the subsequent analysis, is described in USEPA Method TO-15 "Determination of Volatile Organic Compounds (VOCs) in air collected in specially-prepared canisters and analysed by Gas Chromatography/Mass Spectrometry (GC/MS)".

Samples were analysed by Queensland Health (NATA Laboratory Accreditation No. 41) based on USEPA method TO-15 (Laboratory Report Nos. SSP79465, SSP79721). Analytical results for samples collected on the 22/06/2022 and 28/06/2022 were unavailable at the time of reporting due to delays from the analytical laboratory. These results will be reported in the next report.

The test method used was in accordance with Golder Source Test Method C9, "Canister (Evacuated) Sampling for VOC: In Ambient Air and Source Emissions".

BTEX (24 hour average) mass concentration statistics for the reporting period are given in Table 16. Laboratory certificates are presented in APPENDIX B.

**Table 16: Station 4 - Primula Avenue AAQMS BTEX concentrations (24 hour average)**

Date	Sample no.	Benzene (ppb)	Toluene (ppb)	Ethylbenzene (ppb)	Total xylene isomers (ppb)
4/06/2022	22-1029	<0.5	<0.5	<0.5	<1
10/06/2022	22-1120	<0.5	<0.5	<0.5	<1
16/06/2022	22-1121	<0.5	<0.5	<0.5	<1
NEPM MIL <sup>A</sup>		3.0 <sup>B</sup>	1000	NA	250

**Note:**

A National Environment Protection Measure (Air Toxics) Monitoring Investigation Level

B Annual average

Sample analysis conducted by Queensland Health, NATA Accreditation No. 41/ Eurofins Pty Ltd, NATA Accreditation No. 1261.

Analysis dates: 13/06/2022 (22-1029); 7/07/2022 (22-1120, 22-1121).

## 6.5 Meteorological parameters

### 6.5.1 Ambient temperature

Ambient Temperature data for all AAQMS sites are presented in Figure 12 for the reporting period.

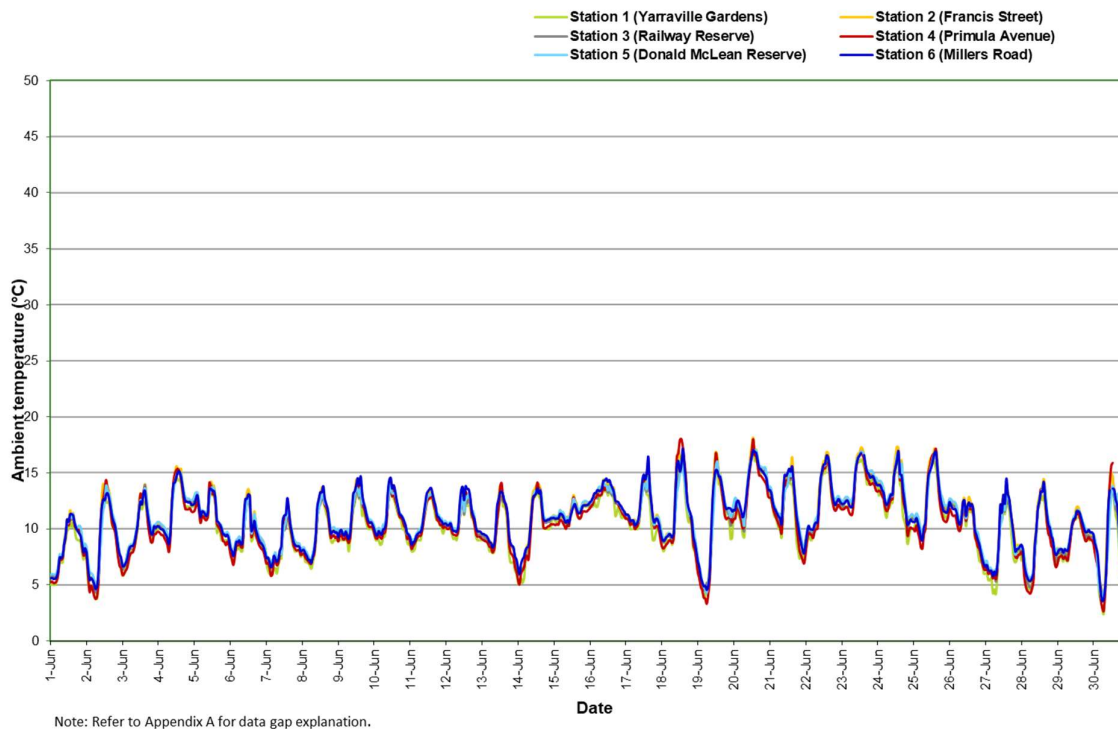


Figure 12: Ambient temperature (1 hour average) All AAQMS – June 2022

### 6.5.2 Relative humidity

Relative Humidity data for all AAQMS sites are presented in Figure 13 for the reporting period.

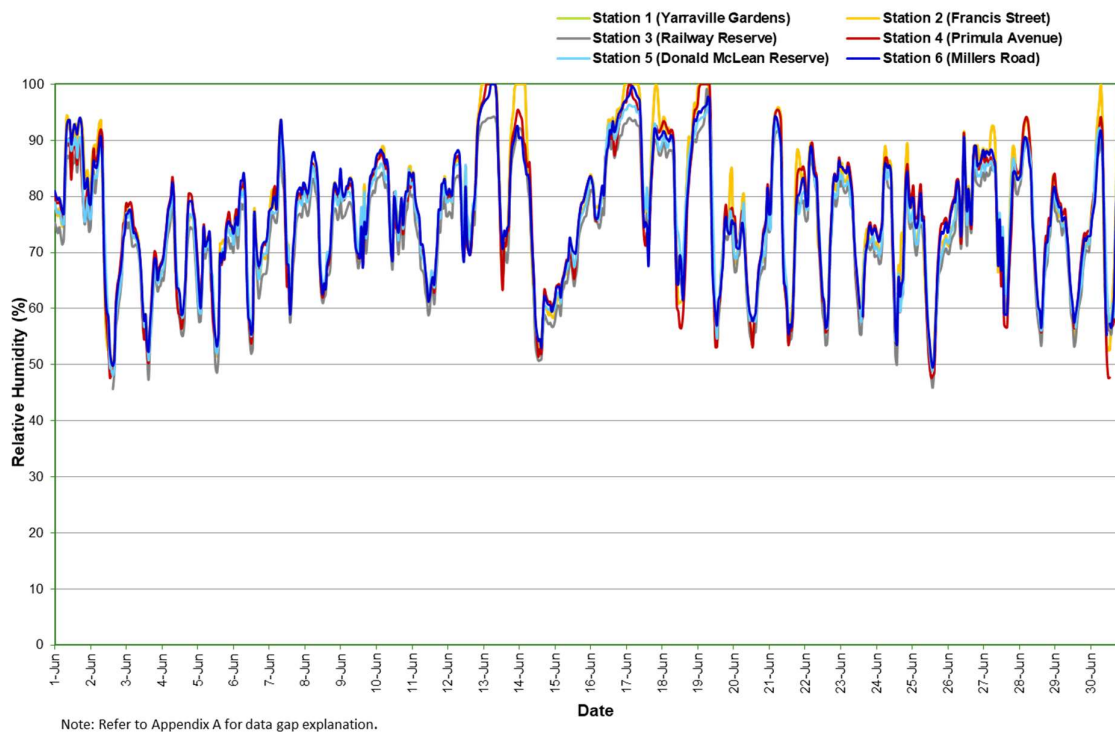


Figure 13: Relative humidity (1 hour average) All AAQMs – June 2022

### 6.5.3 Atmospheric pressure

Atmospheric pressure data for Station 4 (Primula Avenue AAQMS) is presented in Figure 14 for the reporting period.



Figure 14: Atmospheric pressure (1 hour average) Station 4 Primula Avenue – June 2022

### 6.5.4 Wind speed

Wind Speed data for all AAQMS sites are presented in Figure 15 for the reporting period.

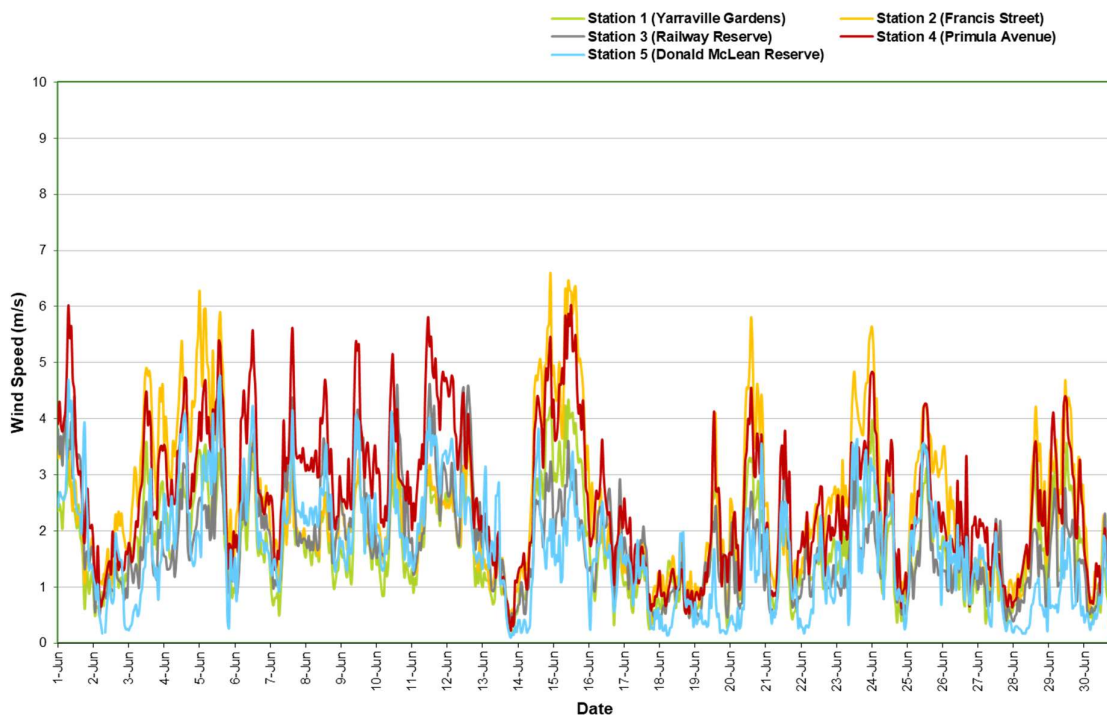


Figure 15: Wind speed (1 hour average) All AAQMs – June 2022

### 6.5.5 Wind rose – Station 1 (Yarraville Gardens)

A wind rose (1 hour average) for Yarraville Gardens AAQMS is presented in Figure 16.

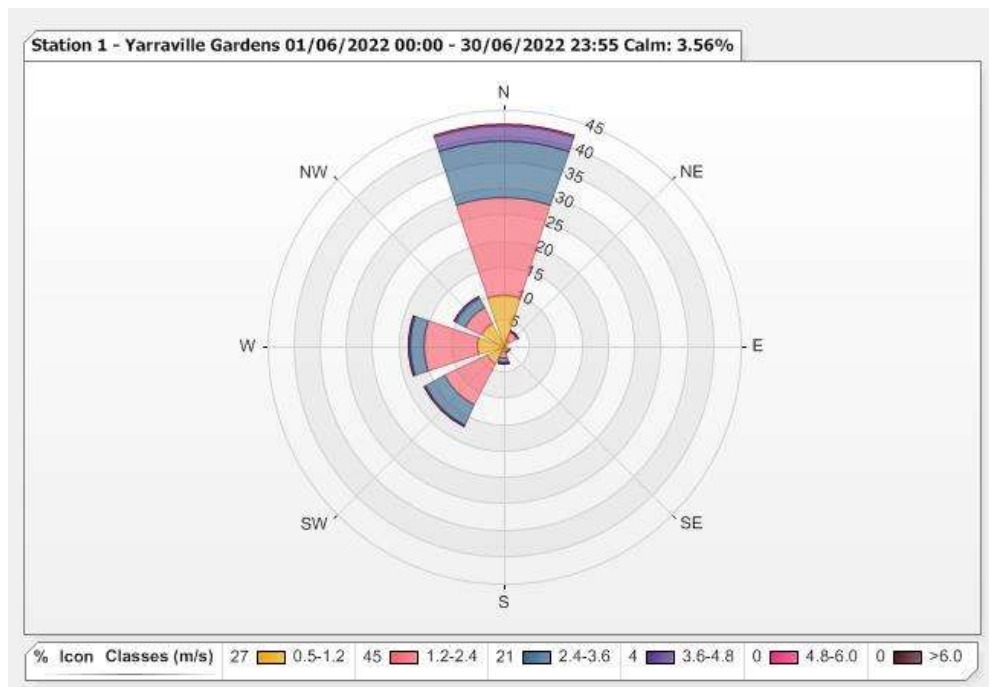


Figure 16: Wind speed (1 hour average) Station 1 - Yarraville Gardens

6.5.6 Wind rose – Station 2 (Francis Street)

A wind rose (1 hour average) for Station 2 (Francis Street AAQMS) is presented in Figure 17.

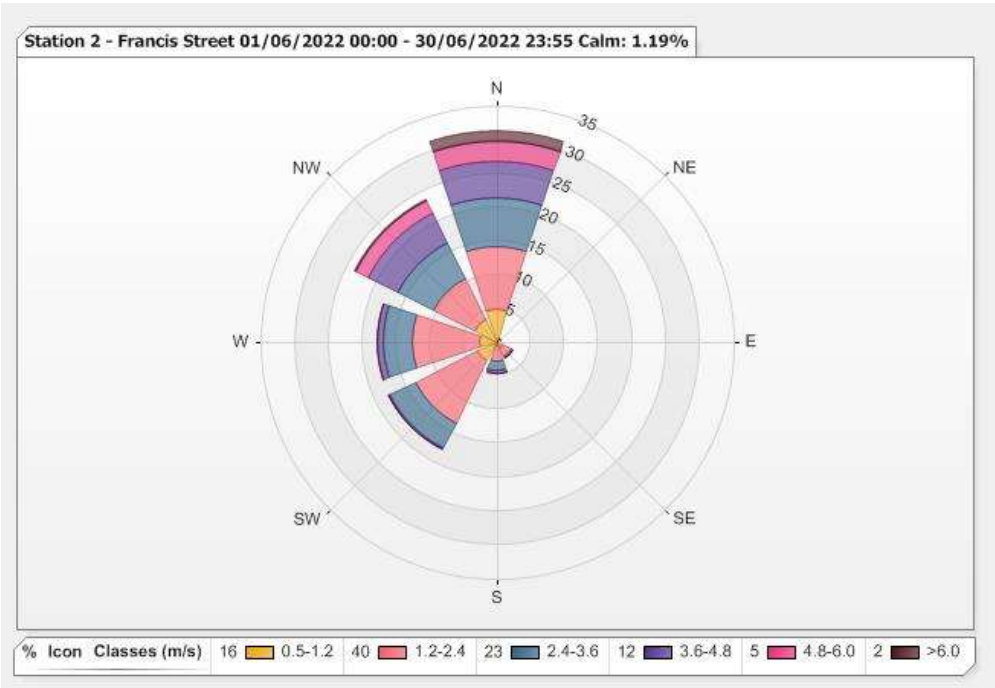


Figure 17: Wind speed (1 hour average) Station 2 - Francis Street

6.5.7 Wind rose – Station 3 (Railway Reserve)

A wind rose (1 hour average) for Station 3 (Railway Reserve AAQMS) is presented in Figure 18.

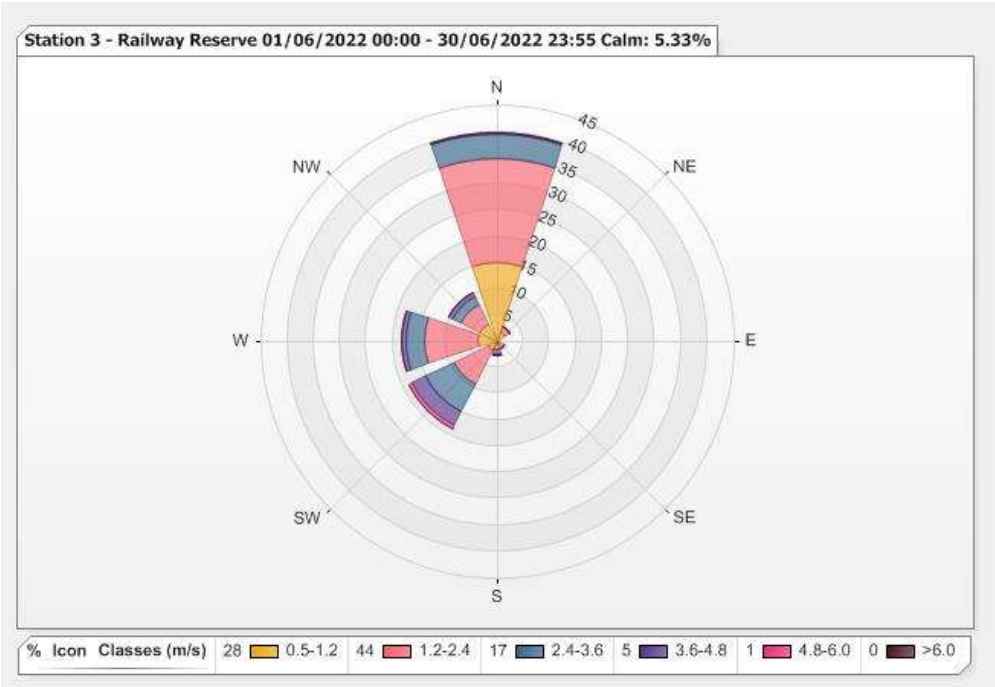


Figure 18: Wind speed (1 hour average) Station 3 - Railway Reserve

### 6.5.8 Wind rose – Station 4 (Primula Avenue)

A wind rose (1 hour average) for Station 4 (Primula Avenue AAQMS) is presented in Figure 19.

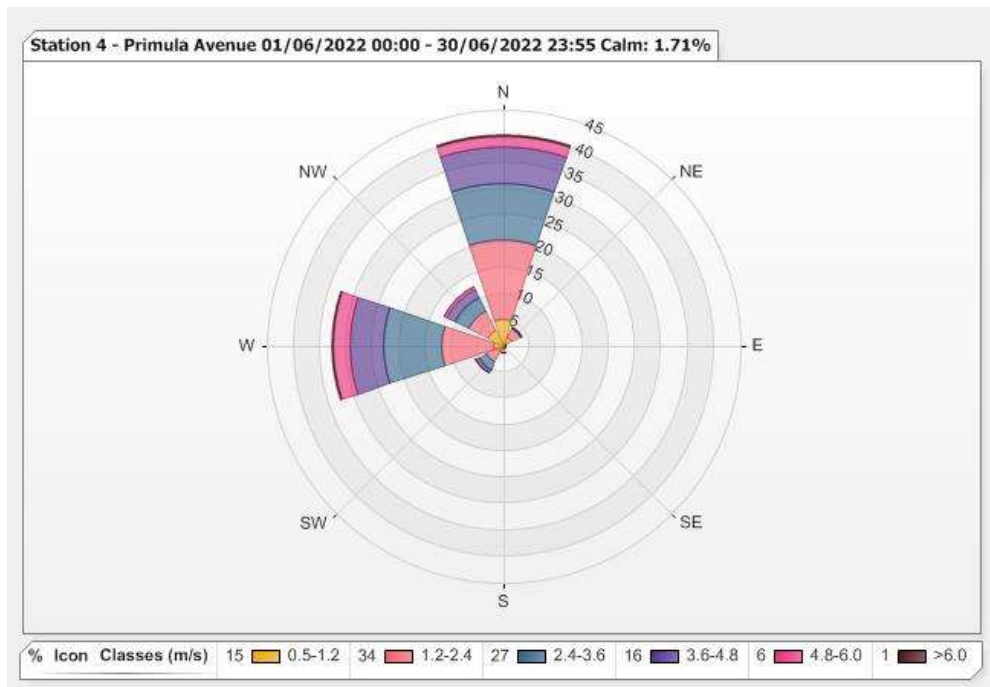


Figure 19: Wind speed (1 hour average) Station 4 - Primula Avenue

### 6.5.9 Wind rose – Station 5 (Donald McLean Reserve)

A wind rose (1 hour average) for Station 5 (Donald McLean Reserve AAQMS) is presented in Figure 20.

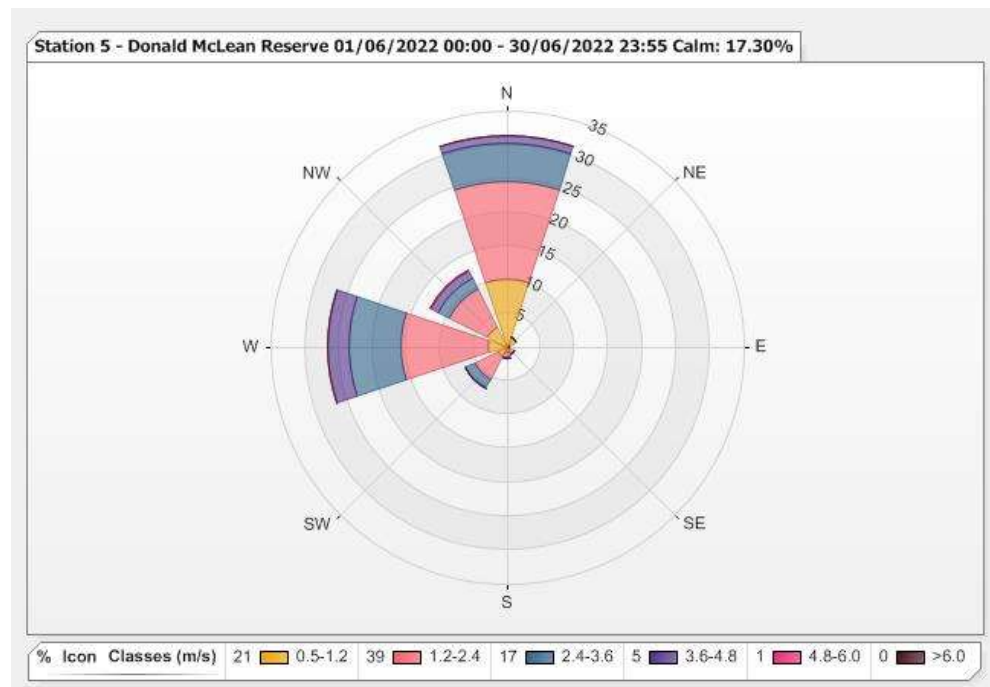


Figure 20: Wind speed (1 hour average) Station 5 - Donald McLean Reserve



## 7.0 QUALITY ASSURANCE

### 7.1 Data capture

Data capture is defined as the number of valid data periods collected divided by the number of available data periods. Valid data excludes periods where the instrument is unavailable due to calibration and maintenance and excludes periods where the data has been rejected due to quality assurance/data validation procedures.

Automatic calibrations are conducted for NO<sub>2</sub> and CO daily to monitor and correct instrument drift where necessary. NO<sub>2</sub> and CO automatic calibrations are conducted once per day between 01:00 and 01:45 hours.

Data capture statistics for the reporting period 1 June to 30 June 2022 are shown in Table 17.

Averages were only collected for those periods where the 5 minute data constituted 75% data capture.

Data capture statistics for June 2022 were above 90 percent for all parameters at all stations except for PM<sub>2.5</sub> at Station 5 (Donald McLean Reserve) and CO at Station 4 (Primula Avenue) due to instrument faults.

**Table 17: Data Capture**

Parameter	Averaging period	Station	Collected periods	Available periods	Data capture <sup>1</sup>
PM <sub>2.5</sub>	24 hour	1 – Yarraville Gardens	30	30	100%
	24 hour	2 – Francis Street	30	30	100%
	24 hour	3 – Railway Reserve	30	30	100%
	24 hour	4 – Primula Avenue	30	30	100%
	24 hour	5 – Donald McLean Reserve	26	30	87%
	24 hour	6 – Millers Road	30	30	100%
PM <sub>10</sub>	24 hour	1 – Yarraville Gardens	30	30	100%
	24 hour	2 – Francis Street	30	30	100%
	24 hour	3 – Railway Reserve	30	30	100%
	24 hour	4 – Primula Avenue	30	30	100%
	24 hour	5 – Donald McLean Reserve	30	30	100%
	24 hour	6 – Millers Road	30	30	100%
NO <sub>2</sub>	1 hour	4 – Primula Avenue	688	720	96%
CO	1 hour	4 – Primula Avenue	610	720	85%
Ambient temperature & relative humidity	1 hour	1 – Yarraville Gardens	719	720	100%
	1 hour	2 – Francis Street	719	720	100%
	1 hour	3 – Railway Reserve	718	720	100%
	1 hour	4 – Primula Avenue	719	720	100%
	1 hour	5 – Donald McLean Reserve	679	720	94%
	1 hour	6 – Millers Road	719	720	100%

Atmospheric pressure	1 hour	4 – Primula Avenue	719	720	100%
Wind speed and direction	1 hour	1 – Yarraville Gardens	720	720	100%
	1 hour	2 – Francis Street	720	720	100%
	1 hour	3 – Railway Reserve	719	720	100%
	1 hour	4 – Primula Avenue	720	720	100%
	1 hour	5 – Donald McLean Reserve	720	720	100%

**Note:**

1 Rounded to two significant figures

## 7.2 Data validation

Data contained in this report has been validated against performance and calibration requirements for each instrument. Data during commissioning, maintenance and calibration periods has been removed from the validated data sets. APPENDIX A lists the data exceptions for all AAQMS. Missing data periods during automatic calibrations of the gaseous atmospheric contaminants NO<sub>2</sub> and CO are not shown.

## 8.0 DISCUSSION

Table 18 presents the maximum measured concentration during the reporting period at Station 1 for PM<sub>2.5</sub> and PM<sub>10</sub> compared with the respective criteria.

**Table 18: Station 1 Summary – June 2022**

Parameter	Units	Averaging period	Maximum concentration	Air quality objective <sup>A</sup>	Exceedances <sup>B</sup>
PM <sub>2.5</sub>	ug/m <sup>3</sup>	24 hour	14	25	Nil
PM <sub>10</sub>	ug/m <sup>3</sup>	24 hour	23	50	Nil

Notes:

A – SEPP(AAQ) objective

B - Exceedances refers to the number of individual days the criterion was exceeded at any station.

Table 19 presents the maximum measured concentration during the reporting period at Station 2, Station 3, Station 5 and Station 6 for PM<sub>2.5</sub> and PM<sub>10</sub> compared with the respective criteria.

**Table 19: Station 2, Station 3, Station 5 and Station 6 Summary – June 2022**

Parameter	Units	Averaging period	Maximum concentration				Air quality objective <sup>A</sup>	Exceedances <sup>B</sup>
			Station 2	Station 3	Station 5	Station 6		
PM <sub>2.5</sub>	ug/m <sup>3</sup>	24 hour	13	13	16	13	36	Nil
PM <sub>10</sub>	ug/m <sup>3</sup>	24 hour	39	21	30	34	60	Nil

Notes:

A - SEPP(AQM) Intervention level

B - Exceedances refers to the number of individual days the criterion was exceeded at any station.

Table 20 presents maximum measured concentration during the reporting period at Station 4 for PM<sub>2.5</sub>, PM<sub>10</sub>, NO<sub>2</sub>, CO and BTEX compared with the respective criteria.

**Table 20: Station 4 Summary – June 2022**

Parameter	Units	Averaging period	Maximum concentration	Air quality objective	Exceedances <sup>c</sup>
PM <sub>2.5</sub>	ug/m <sup>3</sup>	24 hour	13	36 <sup>A</sup>	Nil
PM <sub>10</sub>	ug/m <sup>3</sup>	24 hour	30	60 <sup>A</sup>	Nil
NO <sub>2</sub>	ppb	1 hour	36	140 <sup>A</sup>	Nil
CO	ppm	1 hour	1.2	29 <sup>A</sup>	Nil
Benzene	ppb	24 hour	<0.5	3.0 <sup>B</sup>	Nil
Toluene	ppb	24 hour	<0.5	1000 <sup>B</sup>	Nil
Total xylene isomers	ppb	24 hour	<1	250 <sup>B</sup>	Nil

Notes:

A - SEPP(AQM) Intervention level

B - Air NEPM Monitoring investigation level

C - Exceedances refers to the number of individual days the criterion was exceeded at any station.

June 2022 ambient air quality monitoring programme results were less than the respective air quality objectives for all parameters measured at all ambient air quality stations.

Data capture statistics for June 2022 were above 90 percent for all parameters at all stations except for PM<sub>2.5</sub> at Station 5 (Donald McLean Reserve) and CO at Station 4 (Primula Avenue) due to instrument faults.

A construction area (Millers Road exit ramp and noise wall relocation) is now adjacent Station 4, as a result, the measured pollutant concentrations may not be representative of traffic emissions.

## 9.0 IMPORTANT INFORMATION RELATING TO THIS REPORT

Your attention is drawn to the document titled - "Important Information Relating to this Report", which is included in APPENDIX C of this report. The statements presented in that document are intended to inform a reader of the report about its proper use. There are important limitations as to who can use the report and how it can be used. It is important that a reader of the report understands and has realistic expectations about those matters. The Important Information document does not alter the obligations Golder Associates has under the contract between it and its client.

## Signature Page

Golder Associates Pty Ltd



Anthony Myszka  
*Environmental Technician*



Mark Tulau  
*Senior Environmental Scientist*

AM/MDT/am

Golder and the G logo are trademarks of Golder Associates Corporation

j:\2017\1789878 - cpb contractors westgate tunnel aaqms\correspondence out\1789878-047\_2022\_jun\1789878-047-r-rev0\_aaqms\_2022\_jun.docx

**APPENDIX A**

# Data Exceptions

Date from	Date to	Station	Parameters	Reason
4/06/2022 00:05	4/06/2022 03:05	1	PM <sub>2.5</sub>	Invalid data <sup>1</sup>
4/06/2022 11:05	4/06/2022 12:35	3	PM <sub>10</sub>	Invalid data <sup>1</sup>
5/06/2022 18:25	6/06/2022 06:20	3	PM <sub>10</sub>	Invalid data <sup>1</sup>
5/06/2022 20:55	5/06/2022 23:55	4	PM <sub>2.5</sub>	Invalid data <sup>1</sup>
8/06/2022 00:05	8/06/2022 04:05	4	PM <sub>2.5</sub>	Invalid data <sup>1</sup>
9/06/2022 11:50	9/06/2022 12:25	4	CO	Maintenance / calibration
12/06/2022 06:05	15/06/2022 14:00	5	PM <sub>2.5</sub>	Instrument fault – Pressure board failure
13/06/2022 04:10	13/06/2022 06:15	3	PM <sub>10</sub>	Invalid data <sup>1</sup>
16/06/2022 20:55	16/06/2022 22:30	2	PM <sub>10</sub>	Invalid data <sup>1</sup>
17/06/2022 10:40	17/06/2022 12:30	4	CO	Invalid data <sup>1</sup>
20/06/2022 11:55	20/06/2022 17:00	3	PM <sub>10</sub>	Maintenance / calibration
22/06/2022 04:05	22/06/2022 07:00	3	PM <sub>10</sub>	Invalid data <sup>1</sup>
23/06/2022 03:05	23/06/2022 07:00	3	PM <sub>10</sub>	Invalid data <sup>1</sup>
24/06/2022 10:15	27/06/2022 14:25	4	CO	Instrument fault - IR source failure
25/06/2022 08:20	25/06/2022 10:50	1	PM <sub>2.5</sub>	Invalid data <sup>1</sup>
29/06/2022 10:10	29/06/2022 11:25	1	PM <sub>2.5</sub> / PM <sub>10</sub>	Maintenance / calibration
29/06/2022 11:45	29/06/2022 15:15	2	PM <sub>10</sub>	Maintenance / calibration
29/06/2022 11:45	29/06/2022 12:15	2	PM <sub>2.5</sub>	Maintenance / calibration
29/06/2022 13:15	29/06/2022 14:50	5	PM <sub>2.5</sub>	Maintenance / calibration
29/06/2022 13:15	29/06/2022 19:00	5	PM <sub>10</sub>	Maintenance / calibration
30/06/2022 10:10	30/06/2022 12:35	3	PM <sub>2.5</sub> / PM <sub>10</sub>	Maintenance / calibration
30/06/2022 12:05	30/06/2022 16:00	6	PM <sub>2.5</sub> / PM <sub>10</sub>	Maintenance / calibration
30/06/2022 13:55	30/06/2022 18:00	4	PM <sub>2.5</sub> / PM <sub>10</sub>	Maintenance / calibration
30/06/2022 14:20	30/06/2022 15:30	4	CO	Maintenance / calibration

Date from	Date to	Station	Parameters	Reason
30/06/2022 14:20	30/06/2022 15:30	4	CO, NO, NO <sub>2</sub> , NO <sub>x</sub>	Maintenance / calibration

Note: 1 – In the opinion of the data reviewer

**APPENDIX B**

# Laboratory Certificates



## CERTIFICATE OF ANALYSIS

**CLIENT:** Golder Associates  
Building 7, Botanicca Corporate Park  
570 - 588 Swan Street  
Richmond VIC 3121

ATTN: Laurent Campbell

Laboratory Reference : SSP79465  
Client Order Number : PO24154  
Quote Number : n/a  
Client Project : 1789878  
Client Batch Reference : n/a  
Date Received : 10-Jun-2022  
Date Commenced : 13-Jun-2022  
Laboratory Number/s : 22KS2222-2225

**CC:** Anthony Myszka

Submitting Authority : Golder Associates

Number of Samples : Four (4) Summa canisters

Reason for Analysis : Analysis of Volatile Organic Compounds (VOCs) in air

Method/s of Analysis : QIS28237 – Identification, confirmation and quantitation of Volatile Organic Compounds (VOCs) by GCMS using an in-house method as per EPA method TO15

Remarks : Sample details and results are summarised in Table 1.



David Pass  
Senior Chemist, Organics Laboratory  
15th June 2022



NATA Accredited  
Laboratory 41  
Accredited for compliance  
with ISO/IEC 17025 -  
Testing

### SSP79465

This report overrides all previous reports. The results relate solely to the sample/s as received and are limited to the specific tests undertaken as listed on the report. The results of this report are confidential and are not to be used or disclosed to any other person or used for any other purpose, whether directly or indirectly, unless that use is disclosed or the purpose is expressly authorised in writing by Queensland Health and the named recipient on this report. To the fullest extent permitted by law, Queensland Health will not be liable for any loss or claim (including legal costs calculated on an indemnity basis) which arise because of (a) problems related to the merchantability, fitness or quality of the sample/s, or (b) any negligent or unlawful act or omissions by Queensland Health that is connected with any activities or services provided by Queensland Health under this agreement (including the timing and/or method under which the sample/s were taken, stored or transported).

Enquiries David Pass  
Phone (+61 7) 3096 2854  
Email David.Pass@health.qld.gov.au

39 Kessels Road  
Coopers Plains QLD 4108  
AUSTRALIA

PO Box 594  
Archerfield QLD 4108  
AUSTRALIA

Phone (+61 7) 3096 2990  
Fax (+61 7) 3096 2977  
Email FSS@health.qld.gov.au

CERTIFICATE OF ANALYSIS

Laboratory Reference: SSP79465  
Laboratory Number: 22KS2222-2225

Table 1: Results for Summa canister analysis

Client Reference		22-1026	22-1027	22-1028	22-1029
Sample Type		Silco Canister #2399	Silco Canister #2389	Silco Canister #1737	Silco Canister #1755
Sampling Time / Date		n/a	n/a	n/a	n/a
Sample Description		ambient air	ambient air	ambient air	ambient air
Method	Volatile Organic Compounds (VOCs) by GC/MS	Units	Reporting Limit	22KS2222	
28237	Benzene	ppbv	0.5	< LOR	< LOR
28237	Toluene	ppbv	0.5	< LOR	< LOR
28237	Ethylbenzene	ppbv	0.5	< LOR	< LOR
28237	m- & p-Xylene	ppbv	0.5	< LOR	< LOR
28237	o-Xylene	ppbv	0.5	< LOR	< LOR

Temperature and atmospheric pressure at time of sampling unavailable

This report overrides all previous reports. The results relate solely to the sample/s as received and are limited to the specific tests undertaken as listed on the report. The results of this report are confidential and are not to be used or disclosed to any other person or used for any other purpose, whether directly or indirectly, unless that use is disclosed or the purpose is expressly authorised in writing by Queensland Health and the named recipient on this report. To the fullest extent permitted by law, Queensland Health will not be liable for any loss or claim (including legal costs calculated on an indemnity basis) which arise because of (a) problems related to the merchantability, fitness or quality of the sample/s, or (b) any negligent or unlawful act or omissions by Queensland Health that is connected with any activities or services provided by Queensland Health under this agreement (including the timing and/or method under which the sample/s were taken, stored or transported).

## CERTIFICATE OF ANALYSIS

**CLIENT:** Golder Associates  
Building 7, Botanica Corporate Park  
570 - 588 Swan Street  
Richmond VIC 3121

ATTN: Laurent Campbell

Laboratory Reference : SSP79721  
Client Order Number : PO24154  
Quote Number : n/a  
Client Project : 1789878  
Client Batch Reference : n/a  
Date Received : 4-Jul-2022  
Date Commenced : 7-Jul-2022  
Laboratory Number/s : 22KS2444-2445

**CC:** Anthony Myszk

Submitting Authority : Golder Associates

Number of Samples : Two (2) Summa canisters

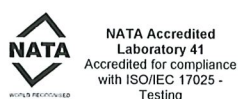
Reason for Analysis : Analysis of Volatile Organic Compounds (VOCs) in air

Method/s of Analysis : QIS28237 – Identification, confirmation and quantitation of Volatile Organic Compounds (VOCs) by GCMS using an in-house method as per EPA method TO15

Remarks : Sample details and results are summarised in Table 1.



David Pass  
Senior Chemist, Organics Laboratory  
18th July 2022



**SSP79721**

This report overrides all previous reports. The results relate solely to the sample/s as received and are limited to the specific tests undertaken as listed on the report. The results of this report are confidential and are not to be used or disclosed to any other person or used for any other purpose, whether directly or indirectly, unless that use is disclosed or the purpose is expressly authorised in writing by Queensland Health and the named recipient on this report. To the fullest extent permitted by law, Queensland Health will not be liable for any loss or claim (including legal costs calculated on an indemnity basis) which arise because of (a) problems related to the merchantability, fitness or quality of the sample/s, or (b) any negligent or unlawful act or omissions by Queensland Health that is connected with any activities or services provided by Queensland Health under this agreement (including the timing and/or method under which the sample/s were taken, stored or transported).

Enquiries David Pass  
Phone (+61 7) 3096 2854  
Email David.Pass@health.qld.gov.au

39 Kessels Road  
Coopers Plains QLD 4108  
AUSTRALIA

PO Box 594  
Archerfield QLD 4108  
AUSTRALIA

Phone (+61 7) 3096 2990  
Fax (+61 7) 3096 2977  
Email FSS@health.qld.gov.au

# CERTIFICATE OF ANALYSIS

Laboratory Reference: SSP79721  
Laboratory Number: 22KS2444-2445

**Table 1: Results for Summa canister analysis**

Client Reference				22-1120	22-1121
Sample Type				Silco Canister #2393	Silco Canister #1750
Sampling Time / Date				n/a	n/a
Sample Description				ambient air	ambient air
Method	Volatile Organic Compounds (VOCs) by GCMS	Units	Reporting Limit	22KS2444	22KS2445
28237	Benzene	ppbv	0.5	< LOR	< LOR
28237	Toluene	ppbv	0.5	< LOR	< LOR
28237	Ethylbenzene	ppbv	0.5	< LOR	< LOR
28237	m- & p-Xylene	ppbv	0.5	< LOR	< LOR
28237	o-Xylene	ppbv	0.5	< LOR	< LOR

Temperature and atmospheric pressure at time of sampling unavailable

This report overrides all previous reports. The results relate solely to the sample/s as received and are limited to the specific tests undertaken as listed on the report. The results of this report are confidential and are not to be used or disclosed to any other person or used for any other purpose, whether directly or indirectly, unless that use is disclosed or the purpose is expressly authorised in writing by Queensland Health and the named recipient on this report. To the fullest extent permitted by law, Queensland Health will not be liable for any loss or claim (including legal costs calculated on an indemnity basis) which arise because of (a) problems related to the merchantability, fitness or quality of the sample/s, or (b) any negligent or unlawful act or omissions by Queensland Health that is connected with any activities or services provided by Queensland Health under this agreement (including the timing and/or method under which the sample/s were taken, stored or transported).

SSP79721

**APPENDIX C**

**Important Information Relating to  
this Report**

The document ("Report") to which this page is attached and which this page forms a part of, has been issued by Golder Associates Pty Ltd ("Golder") subject to the important limitations and other qualifications set out below.

This Report constitutes or is part of services ("Services") provided by Golder to its client ("Client") under and subject to a contract between Golder and its Client ("Contract"). The contents of this page are not intended to and do not alter Golder's obligations (including any limits on those obligations) to its Client under the Contract.

This Report is provided for use solely by Golder's Client and persons acting on the Client's behalf, such as its professional advisers. Golder is responsible only to its Client for this Report. Golder has no responsibility to any other person who relies or makes decisions based upon this Report or who makes any other use of this Report. Golder accepts no responsibility for any loss or damage suffered by any person other than its Client as a result of any reliance upon any part of this Report, decisions made based upon this Report or any other use of it.

This Report has been prepared in the context of the circumstances and purposes referred to in, or derived from, the Contract and Golder accepts no responsibility for use of the Report, in whole or in part, in any other context or circumstance or for any other purpose.

The scope of Golder's Services and the period of time they relate to are determined by the Contract and are subject to restrictions and limitations set out in the Contract. If a service or other work is not expressly referred to in this Report, do not assume that it has been provided or performed. If a matter is not addressed in this Report, do not assume that any determination has been made by Golder in regards to it.

At any location relevant to the Services conditions may exist which were not detected by Golder, in particular due to the specific scope of the investigation Golder has been engaged to undertake. Conditions can only be verified at the exact location of any tests undertaken. Variations in conditions may occur between tested locations and there may be conditions which have not been revealed by the investigation and which have not therefore been taken into account in this Report.

Golder accepts no responsibility for and makes no representation as to the accuracy or completeness of the information provided to it by or on behalf of the Client or sourced from any third party. Golder has assumed that such information is correct unless otherwise stated and no responsibility is accepted by Golder for incomplete or inaccurate data supplied by its Client or any other person for whom Golder is not responsible. Golder has not taken account of matters that may have existed when the Report was prepared but which were only later disclosed to Golder.

Having regard to the matters referred to in the previous paragraphs on this page in particular, carrying out the Services has allowed Golder to form no more than an opinion as to the actual conditions at any relevant location. That opinion is necessarily constrained by the extent of the information collected by Golder or otherwise made available to Golder. Further, the passage of time may affect the accuracy, applicability or usefulness of the opinions, assessments or other information in this Report. This Report is based upon the information and other circumstances that existed and were known to Golder when the Services were performed and this Report was prepared. Golder has not considered the effect of any possible future developments including physical changes to any relevant location or changes to any laws or regulations relevant to such location.

Where permitted by the Contract, Golder may have retained subconsultants affiliated with Golder to provide some or all of the Services. However, it is Golder which remains solely responsible for the Services and there is no legal recourse against any of Golder's affiliated companies or the employees, officers or directors of any of them.

By date, or revision, the Report supersedes any prior report or other document issued by Golder dealing with any matter that is addressed in the Report.

**Any uncertainty as to the extent to which this Report can be used or relied upon in any respect should be referred to Golder for clarification**



**[golder.com](http://golder.com)**