



# LEVEL CROSSING REMOVAL PROJECT



BAYSWATER

# LEVEL CROSSING REMOVAL UPDATE 01

ISSUE #01 - NOVEMBER 2015

## PROJECT TIMELINE

- **Late 2015:** contract award
  - **Late 2015:** early works start at Mountain Highway and Scoresby Road
  - **Early 2016:** major construction starts
  - **Late 2016:** major rail and road closures planned for six weeks
- We won't close Mountain Highway and Scoresby Road at the same time
- **2017:** Project completion

## CONTACT US

- 🌐 [levelcrossings.vic.gov.au](http://levelcrossings.vic.gov.au)
- ✉ [levelcrossings@ecodev.vic.gov.au](mailto:levelcrossings@ecodev.vic.gov.au)
- ☎ 1800 762 667 (business hours Monday – Friday and during out of hours works)
- ✉ Level Crossing Removal Authority, GPO Box 4509, Melbourne VIC 3001

Follow us on social media @ [levelcrossings](https://www.facebook.com/levelcrossings)



 Translation service  
For languages other than English, please call 9280 0780

# Bayswater Level Crossing Removals

**Early works are set to start on the project to remove the level crossings on Mountain Highway and Scoresby Road in Bayswater.**

The Bayswater crossings are part of a Victorian Government commitment to remove 50 dangerous and congested level crossings in Melbourne by 2022.

Construction has already commenced on several sites, and planning and early consultation is underway for the delivery of the entire project.

Laing O'Rourke, Fulton Hogan and Aecom are the preferred contractors who will form an alliance with VicRoads, Public Transport Victoria and Metro Trains Melbourne to remove these level crossings.

## What will your level crossing look like:

Removal of the level crossings will transform the area into a contemporary space that is accessible and safe. The design includes:

- Lowering the rail line below both roads
- Raising Mountain Highway slightly at the crossing point to ensure trains can access the train maintenance facility
- Building a new Bayswater Station with lifts, ramps and stairs to access the new island platform meeting all modern and disability access requirements
- Reconstructing the station car park with no net loss of spaces across the line
- Building improved walking and cycling infrastructure through the area
- Constructing a new bus interchange to make it easier to transfer between buses and trains.



**LEARN MORE AT OUR COMMUNITY  
INFORMATION SESSIONS - Details overleaf  
SIGN UP FOR UPDATES - [levelcrossings.vic.gov.au](http://levelcrossings.vic.gov.au)**

Please drop in at any time, no RSVP required.



## LEARN MORE AT OUR COMMUNITY INFORMATION SESSIONS

Come and learn more about the projects!

The Level Crossing Removal Authority is holding drop in information sessions to share detailed designs and information about the construction program for the removal of the level crossings at Mountain Highway and Scoresby Road, Bayswater.

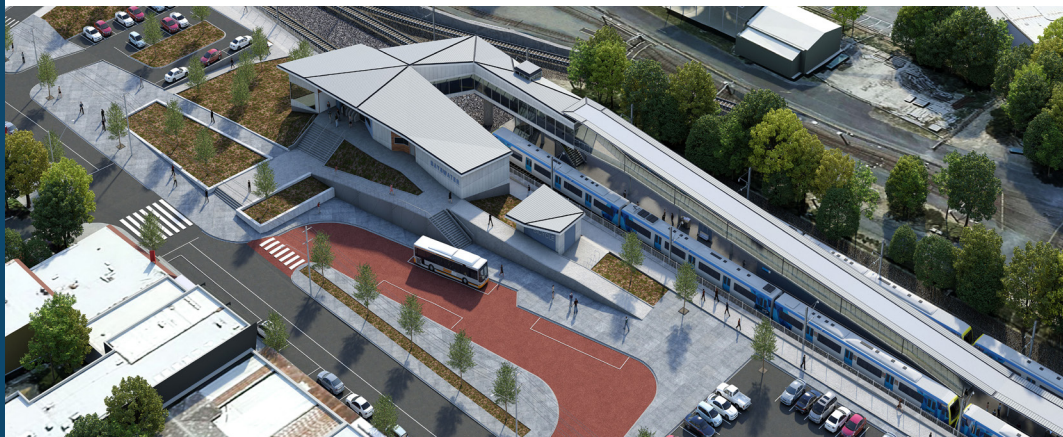
Wednesday 18 November  
3.30pm – 7.00pm

Saturday 28 November  
12.00pm-3.30pm

Knox Community Arts Centre,  
Corner Mountain Highway  
and Scoresby Road Bayswater  
Melways reference 64 G3

## Benefits to the community

- Improving reliability of the transport network
- Improving safety for pedestrians and road users
- Creating a safe, accessible and attractive new Bayswater station
- Reducing travel times for all road users on Mountain Highway and Scoresby Road
- Creating jobs.



Bayswater Station (Artist's impression)

## CONSTRUCTION IMPACTS

**By delivering the Mountain Highway and Scoresby Road projects together we are reducing construction disruptions for locals. This includes only having to do one major closure of the rail line which will limit impacts on everyone.**

During construction, there will be changes to train and bus services and to traffic and pedestrian access in Bayswater.

We will keep you well-informed in advance about these changes.

Information about construction and public transport impacts to local residents, traders and travellers, will be available on our website, posters at the train stations, letters and newsletters to the community, print and radio advertisements and our social media channels. Sign up for updates on our website or follow us on social media today,

We will work with local traders and the community to minimise the impacts of these changes as much as possible.

