



Work underway to build Manningham Road interchange

# Construction progressing in Bulleen



Project Update  
May 2023

Works are stepping up in Bulleen as we prepare for major construction of the North East Link Tunnels.

We've started building the new Manningham Road interchange and will soon start making changes to Bulleen Road, keeping traffic moving as we work.

In October, we'll move Bulleen Road further west, using our current construction site on Bulleen Park Oval 1 to build the new alignment.

This will create space to build the new tunnel entrance and Yarra Link green bridge, while making sure traffic keeps moving and access to local schools and sports grounds remains open.

## Project timeline



Sign up for updates  
[northeastlink.vic.gov.au](http://northeastlink.vic.gov.au)





## Upcoming works

### 1. Manningham Road interchange

We've started works on the new Manningham Road interchange, that will shift 14,700 vehicles off Bulleen Road each day and into the North East Link Tunnels.

The Manningham Road interchange will be built using a method called cut and cover (see below). A deep area will be excavated to build the tunnel and connecting ramps, then the tunnel is covered over when finished.

Right now, we're busy building structural walls known as 'Diaphragm walls' to build the TBM retrieval box. We're also moving underground services and demolishing buildings in the former Bulleen Industrial Precinct.

You'll notice us working along Bridge Street, Bulleen, Manningham and Templestowe roads. Over the coming months, we'll be making temporary changes to the way traffic moves in this area, to keep traffic moving as we progress construction. We'll keep you informed about any upcoming works.

### 2. Trinity cut and cover works

We're continuing works at Trinity Grammar to construct the section of North East Link Tunnels that will connect to the new Eastern Freeway interchange. As with Manningham Road interchange, this section will also be built using the cut and cover method.

As this construction method occurs at surface level, we have been working at Trinity Lake to ensure continued irrigation is provided for the school. We have recently installed large inflatable bladders to split the lake in two, separating the area needed for our works. This complex operation is rare, only being undertaken at three other locations in Australia.

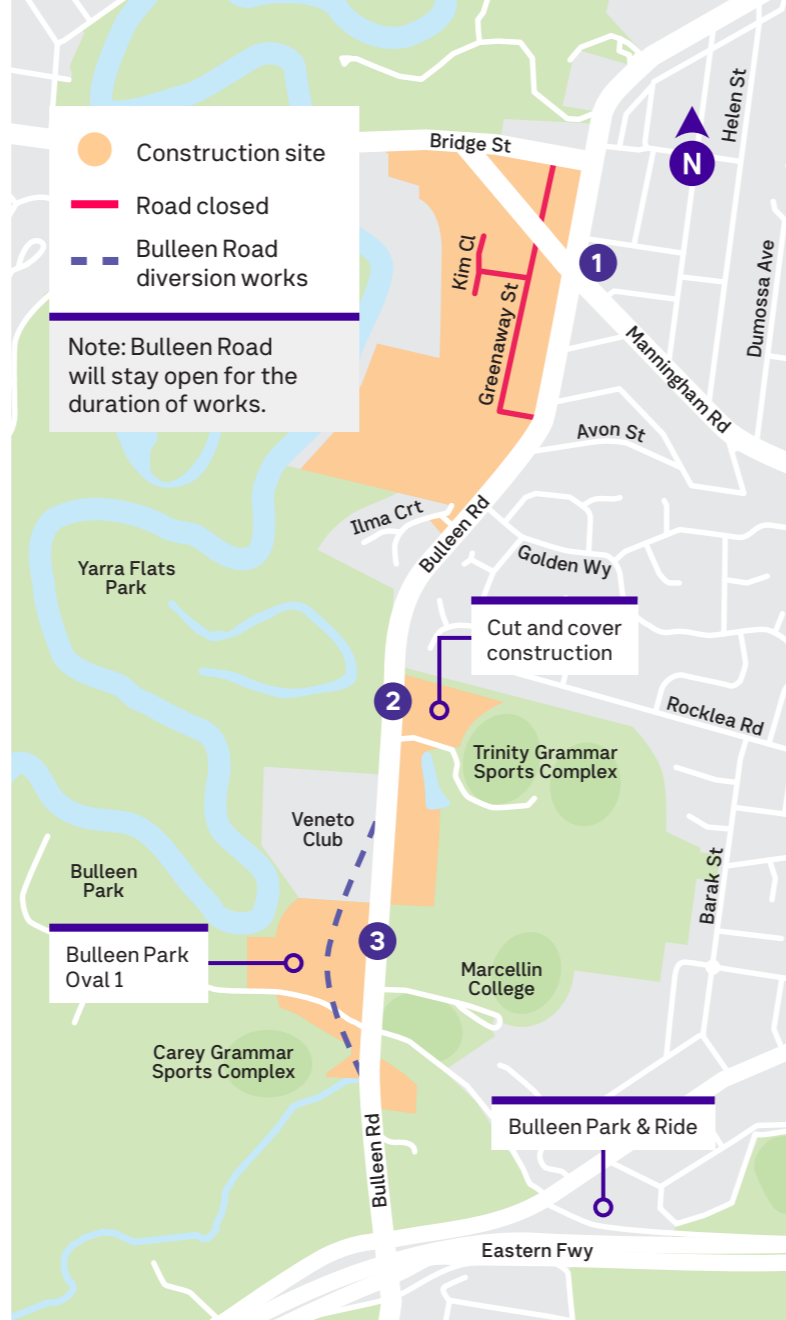
We're doing a lot of work to protect Trinity Lake and monitor water levels throughout construction, working closely with all schools and sporting facilities. You'll notice large machinery and materials arriving on site as we begin works to build the cut and cover box.

### 3. Realigning Bulleen Road

We're starting to make some changes to Bulleen Road. We're using land at Bulleen Park Oval 1 to move Bulleen Road further west to support North East Link Tunnels construction. The existing Bulleen Road will stay open during the construction period, until a diversion is completed in late 2023.

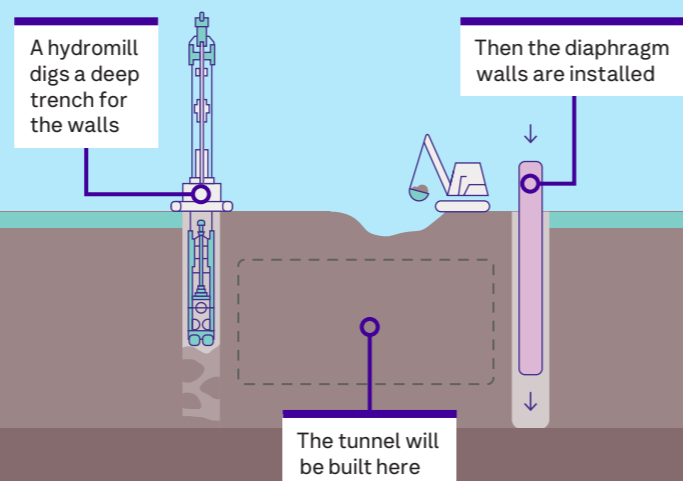
We'll be working hard to keep traffic moving during construction, while maintaining access for local schools, sports clubs and the Veneto Club. In 2028, we'll return a fully upgraded Bulleen Road with new traffic lights and access roads for Carey Grammar, Marcellin College, Trinity Grammar and the Veneto Club. These access roads will include new landscaping, as well as cycling and walking connections.

Once Bulleen Road has been realigned for construction, we'll start building the base of the new Yarra Link green bridge, the entrance and exit ramps for the tunnels and then the tunnel ventilation structure. The two-hectare green bridge over Bulleen Road will link Koonung Creek Trail to Bulleen Park for the first time. The bridge will be planted with indigenous trees, grasses and shrubs.



### Cut and cover construction method

To build the cut and cover tunnels, massive concrete walls will first be built deep into the ground. These walls are known as 'diaphragm walls'. The soil will then be removed from the ground and a large concrete slab will be poured to make the tunnel roof. Once the roof is in place, surface activity can resume as construction works continue below.



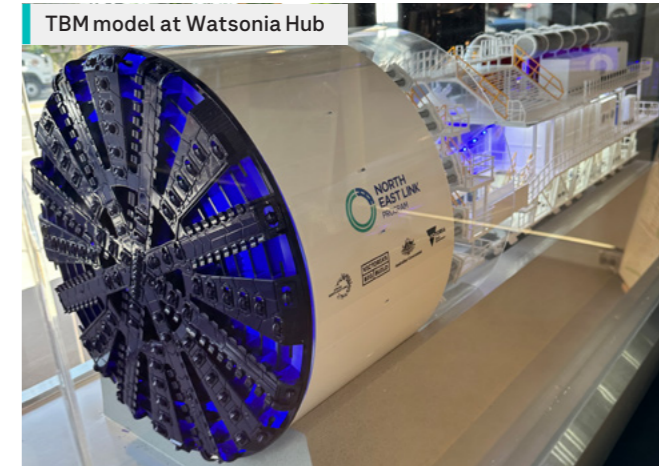
## Managing construction

We're working closely with the local community to manage the impact of works as best we can.

Throughout our works we're monitoring dust, noise, light and vibration. We're doing this in real time using water carts and street sweepers for dust, targeted directional lighting and reducing noise at the source.

We also continue to look at ways to prevent parking pressures in local streets. We're building car parks for our workers within our work sites and are encouraging our workforce to take alternative forms of transport to site.

We appreciate your patience as we build North East Link.



### Tunnel Boring Machines (TBMs)

Interested in seeing the Tunnel Boring Machines (TBMs) that will build the North East Link Tunnels from Watsonia to Bulleen? While the actual TBMs will arrive later this year, we've had a model replica delivered to our Watsonia Hub!

### When we'll be working

Monday to Friday	7am to 6pm
Sunday to Friday	7pm to 6am
Saturdays	7am to 1pm

There may also be times where construction continues until 10pm on weekdays and up to 5pm on Saturdays.

We'll contact residents and businesses before any extended hours or night works with more information.

Bulleen Templestowe Junior Football Club Open Day



### Bulleen Templestowe Junior Football Club

We were out at the Bulleen Templestowe Junior Football Club Open Day to answer questions about North East Link Tunnel works and sports upgrades during construction. Thanks to social enterprise, Sisterworks, for providing a sausage sizzle on the day!

Clay manufacturing in operation at Greenaway Street worksite





# Bulleen Park & Ride

Buses are now running from Bulleen Park & Ride – the first part of the Eastern Express Busway, making it easier to catch faster, more frequent buses to and from the city.

The premium new station includes 370 new car spaces, secure bike storage and a 5000 square metre green roof. Find out more at [northeastlink.vic.gov.au](http://northeastlink.vic.gov.au)



Buses testing out the new park and ride in Bulleen



**EASTERN  
FREEWAY  
UPGRADES**

Until late 2023, we'll be working in and around the Eastern Freeway as we progress upgrade works.

From Burke Road to Tram Road, we'll be out assessing ground conditions to help inform designs and plan for construction.

There will be some night works, lane closures and local detours.

We'll continue to give residents in Bulleen, Balwyn North and Doncaster more detail as works occur close to them.

The Eastern Freeway Upgrades will slash travel times, with new express lanes and up-to-date technology, and a seamless connection to the new North East Link Tunnels.

A builder will be appointed for this first stage of the upgrades later this year. Look out for opportunities to give feedback on local designs late this year.

[Find out more about works at bigbuild.vic.gov.au](http://bigbuild.vic.gov.au)

## Keeping you up to date

Our community engagement team will continue to be out and about talking to people about works in their area and how we can support you during construction.

You can also visit us at:

### Watsonia Hub

17 Watsonia Road, Watsonia  
Open 10am to 5pm weekdays

Drop in any time, or contact our project team to make an appointment.

For more information, or to sign up to our e-newsletter, visit [northeastlink.vic.gov.au](http://northeastlink.vic.gov.au)

[northeastlink.vic.gov.au](http://northeastlink.vic.gov.au)

1800 105 105 (call anytime)

[community@northeastlink.vic.gov.au](mailto:community@northeastlink.vic.gov.au)



For languages other than English please call 9209 0147

[@nelpvic](#)

Please contact us if you would like this information in an accessible format. If you need assistance due to a hearing or speech impairment, visit [relayservice.gov.au](http://relayservice.gov.au)

