



LEVEL CROSSING REMOVAL

PROJECT



BURKE ROAD

LEVEL CROSSING REMOVAL PROJECT

ISSUE #07 FEBRUARY 2016

Removing 50 dangerous and congested level crossings will transform the way people live, work and travel across metropolitan Melbourne and improve safety for drivers and pedestrians.


At Burke Road in Glen Iris, the project team has removed the level crossing, rebuilt Gardiner Station, and provided improvements to road and public transport connections.

CONTACT US

- 📍 levelcrossings.vic.gov.au
- ✉ Burke@levelcrossings.com.au
- ☎ 03 9915 4788
- ✉ Level Crossing Removal Authority
GPO Box 4509
Melbourne VIC 3001

Follow us on social media
[@levelcrossings](#)



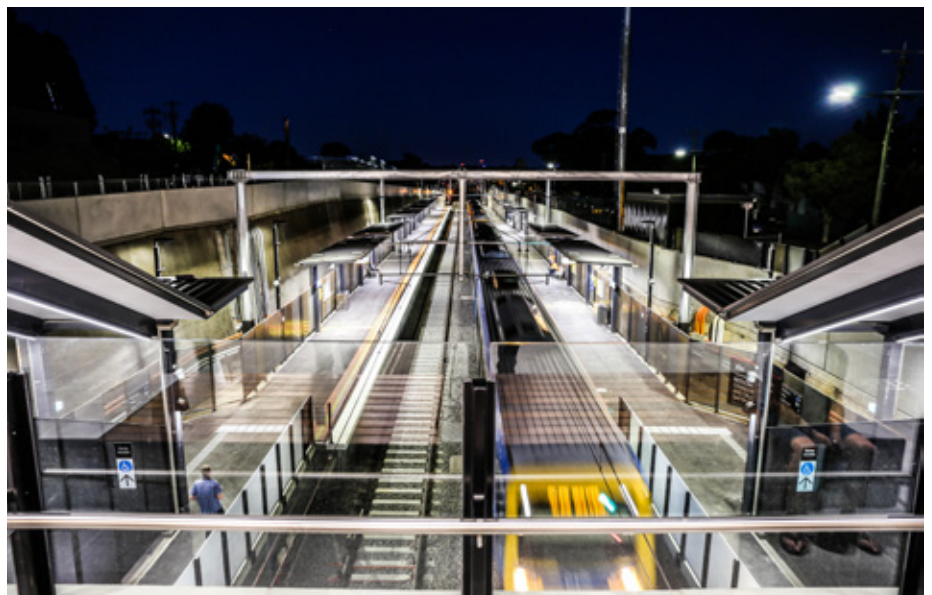
 Translation service
For languages other than
English, please call 9280 0780

The project team would like to thank the community and local businesses for your ongoing patience and continued support while we deliver this important project.

The Level Crossing Removal Project reached a major milestone in January when the boom gates were removed at Burke Road in Glen Iris. Since that time, Burke Road has re-opened, new train and tram lines are in operation, and we have re-built Gardiner Station.

During intensive works in January, more than 500 people worked on the project, investing some 110,000 hours. As a result, motorists and pedestrians are now experiencing significantly safer and faster travel through this area, and commuters are enjoying the benefits of a modern transport interchange at Gardiner Station.

The project is part of a \$524 million package of works that also includes the removal of level crossings at North, McKinnon and Centre roads on the Frankston Line.



The new lowered Glen Waverley line and Gardiner Station opened in January



The new Gardiner Station open for business

What's happening

Works to construct the new station car park and vehicle underpass are continuing, along with landscaping and reinstatement works. The overall project will be completed in April 2016.

A new Gardiner Station

On 18 January, the new Gardiner Station opened to the public for the first time, much to the delight of train users and the local community.

Along with the removal of the Burke Road level crossing and construction of the new platform tram stop, the station has transformed the area into a modern public transport hub, benefitting the 1,500 passengers who pass through every day.

Works will continue to complete Gardiner Station and the new car park.

Project facts and stats

A lot of materials and man power have been involved in delivering an infrastructure project of this size. A few interesting facts and figures:

- A prefabricated reinforced concrete bridge deck was built during the nine day closure of Burke Road in September 2015
- 92 concrete piles (ground reinforcements) were installed across the project site. Of these, 33 were installed during just one weekend closure of Burke Road
- Construction of the new Gardiner Station area used approximately 140 tonnes of steel (used for platforms, stairs, lifts and canopies) and 1,700 pavers
- Lowering the rail line below Burke Road required the removal of 155,000 m³ of dirt and rock (or the equivalent of 62 Olympic sized swimming pools) and installation of 2.2 kilometres of railway track
- A total of 7,300m³ of concrete was poured during the project (or the equivalent of nearly three Olympic sized swimming pools)
- During the 16 day closure of the Glen Waverley line in January, the project team spent 110,000 man hours removing the level crossing from Burke Road and rebuilding Gardiner Station.

Check out images of our progress between July 2015 and January 2016. To view the video footage of the first level crossing being removed please visit levelcrossings.vic.gov.au



The new lowered Glen Waverley line and Gardiner Station



Construction of the lowered rail cutting (Carroll Crescent)



Construction of the Burke Road bridge deck



Construction of the lowered rail cutting (Wills Street)



NEW HOME FOR SIGNAL BOX

The Gardiner Station signal box was the 'control room' for the manual operation of the level crossing since 1917. The project team has safely removed the box to a temporary location ready for restoration. Ultimately, it will be moved to its permanent home at the entrance to the new station car park.

A number of components from the signal box have been put aside for use in a public art piece, which will be installed in the station forecourt around mid-2016.



The new tram super stop was also completed in January

COMMUNITY CORNER

The project team would like to thank the traders on Burke Road in Glen Iris for their ongoing support and patience during our major construction works.



Little Thai Princess
285 Burke Road
Glen Iris
(03) 9885 4866



Century Cricket
279 Burke Road
Glen Iris
(03) 9885 7050



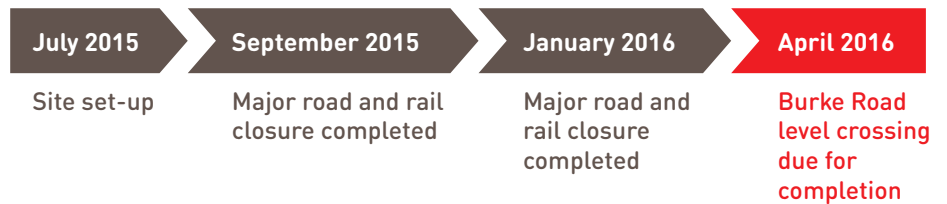
Just Hockey
283 Burke Road
Glen Iris
(03) 9885 7050



Global Dance Studio
277 Burke Road
Glen Iris
(03) 9886 0002



BURKE ROAD TIMELINE



Before major work started in July 2015, the Burke Road level crossing was one of Victoria's worst, with boom gates down for more than 40 minutes during the two-hour morning peak. More than 26,000 vehicles and 150 trains used the crossing every day and it was one of only four main arterial roads in Melbourne where trams crossed the railway lines.