



# Victoria Government Gazette

---

No. S 404 Tuesday 11 August 2020  
By Authority of Victorian Government Printer

---

## Major Transport Projects Facilitation Act 2009

(Sections 95(2)(a))

### DESIGNATION OF THE PROJECT AREA FOR A DECLARED PROJECT

#### Fitzgerald Road, Ardeer Level Crossing Removal Project

I, Richard Wynne, Minister for Planning, pursuant to section 95(2)(a) of the **Major Transport Projects Facilitation Act 2009** (the Act), designate the area of land shown on the plans signed by the Surveyor-General with references LEGL./20.021 Sheets 1 to 5 (inclusive) lodged at the Central Plan Office on 29 April 2020, and as generally indicated on the map in the Schedule, for the Fitzgerald Road, Ardeer Level Crossing Removal Project declared by the Premier to be a declared project pursuant to section 10(1)(b) of the Act and published in the Government Gazette on 16 January 2020.

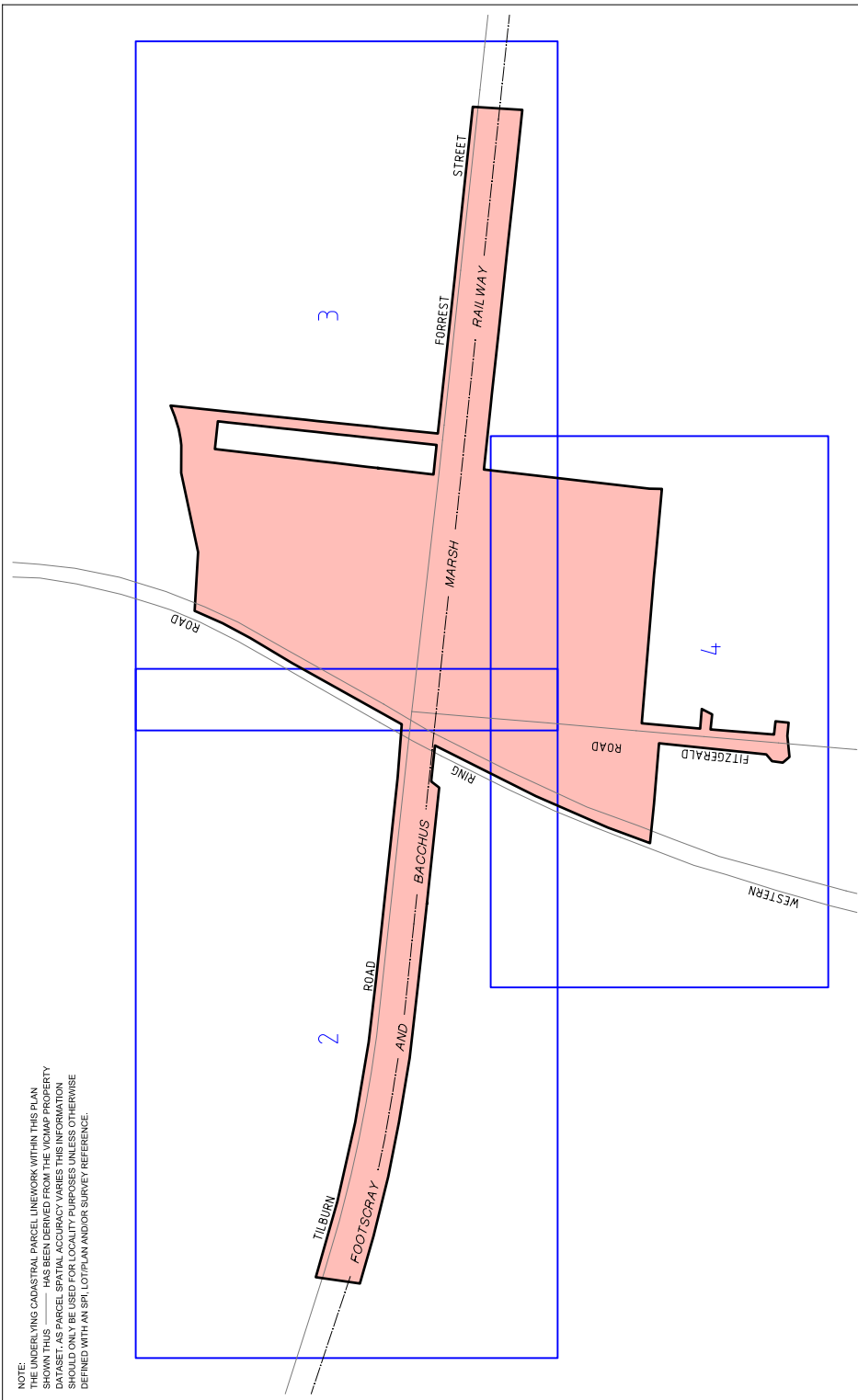
This order comes into effect from the date it is published in the Government Gazette.

Dated 3 August 2020

THE HON. RICHARD WYNNE MP  
Minister for Planning

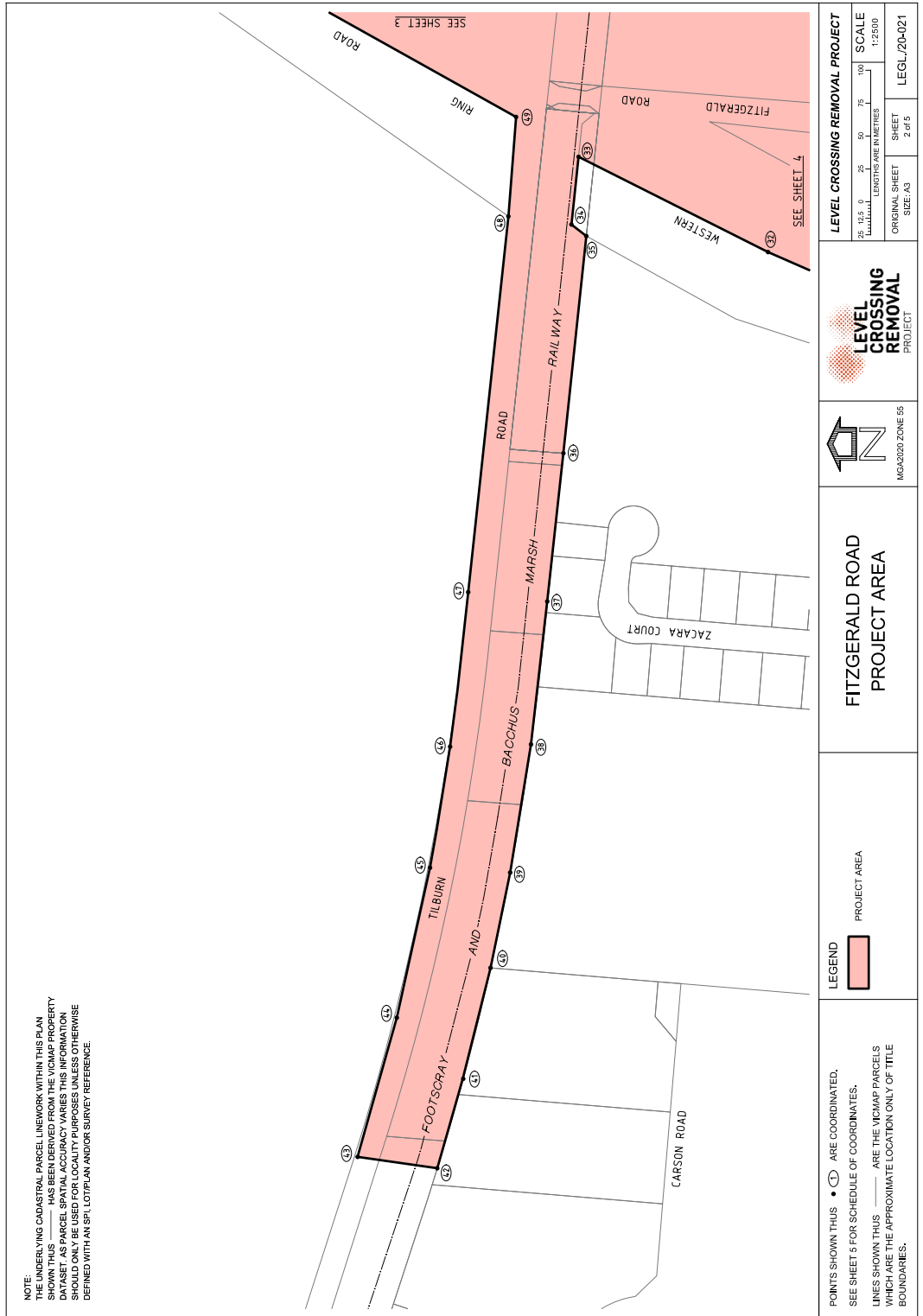
---

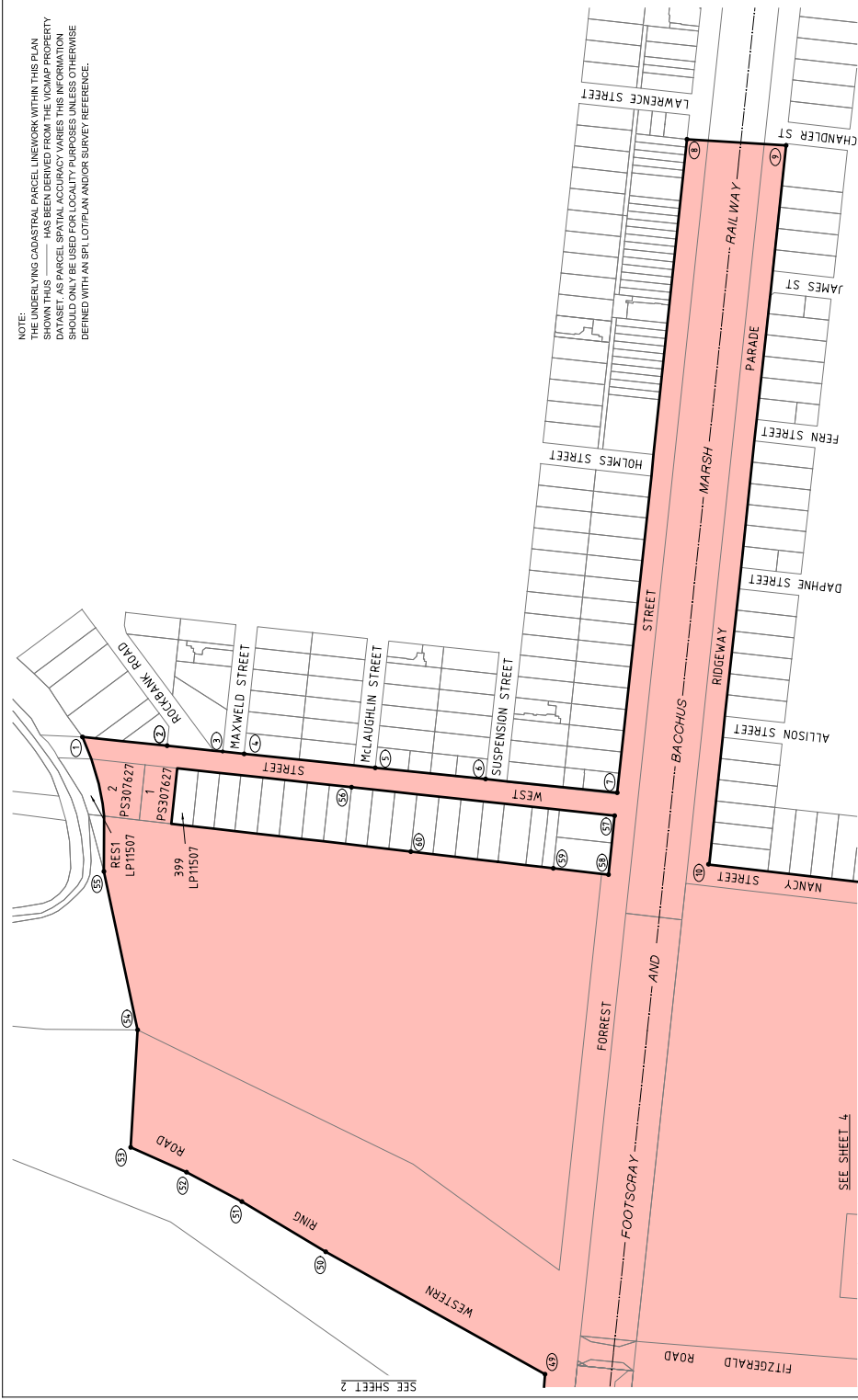
**SPECIAL**



NOTE:  
 THE UNDERLYING CADASTRAL PARCEL NETWORK WITHIN THIS PLAN SHOWN THIS \_\_\_\_\_ HAS BEEN DERIVED FROM THE VICMAP PROPERTY DATASET. AS PARCEL SPATIAL ACCURACY VARIES THIS INFORMATION SHOULD ONLY BE USED FOR LOCALITY PURPOSES UNLESS OTHERWISE DEFINED WITH AN SPI, LOT/PLAN AND/OR SURVEY REFERENCE.

<p>PLAN TO DESIGNATE THE PROJECT AREA PURSUANT TO SECTION 85(2) MAJOR TRANSPORT PROJECTS FACILITATION ACT 2009          Lodged in the Central Plan Office          Dated this <u>28th</u> day of <u>April</u> 2020  <i>C. Lesue Sandy</i>          CRAIG LESLIE SANDY          Surveyor-General</p>	<p>LEGEND</p> <p><span style="display: inline-block; width: 20px; height: 10px; background-color: #f08080; border: 1px solid black;"></span> PROJECT AREA</p>	<p>FITZGERALD ROAD PROJECT AREA</p>	 <p>MCAG2020 ZONE 55</p>	 <p>LEVEL CROSSING REMOVAL PROJECT</p> <table border="1"> <tr> <td>SCALE</td> <td>1:5000</td> </tr> <tr> <td>ORIGINAL SHEET SIZE: A3</td> <td>INDEX SHEET 1 of 5</td> </tr> <tr> <td>LENGTHS ARE IN METRES</td> <td>LEG/L/20.021</td> </tr> </table>	SCALE	1:5000	ORIGINAL SHEET SIZE: A3	INDEX SHEET 1 of 5	LENGTHS ARE IN METRES	LEG/L/20.021
SCALE	1:5000									
ORIGINAL SHEET SIZE: A3	INDEX SHEET 1 of 5									
LENGTHS ARE IN METRES	LEG/L/20.021									





POINTS SHOWN THIS • ⊕ ARE COORDINATED.  
 SEE SHEET 5 FOR SCHEDULE OF COORDINATES.  
 LINES SHOWN THIS — ARE THE VICMAP PARCELS WHICH ARE THE APPROXIMATE LOCATION ONLY OF TITLE BOUNDARIES.

**LEGEND**  
 PROJECT AREA

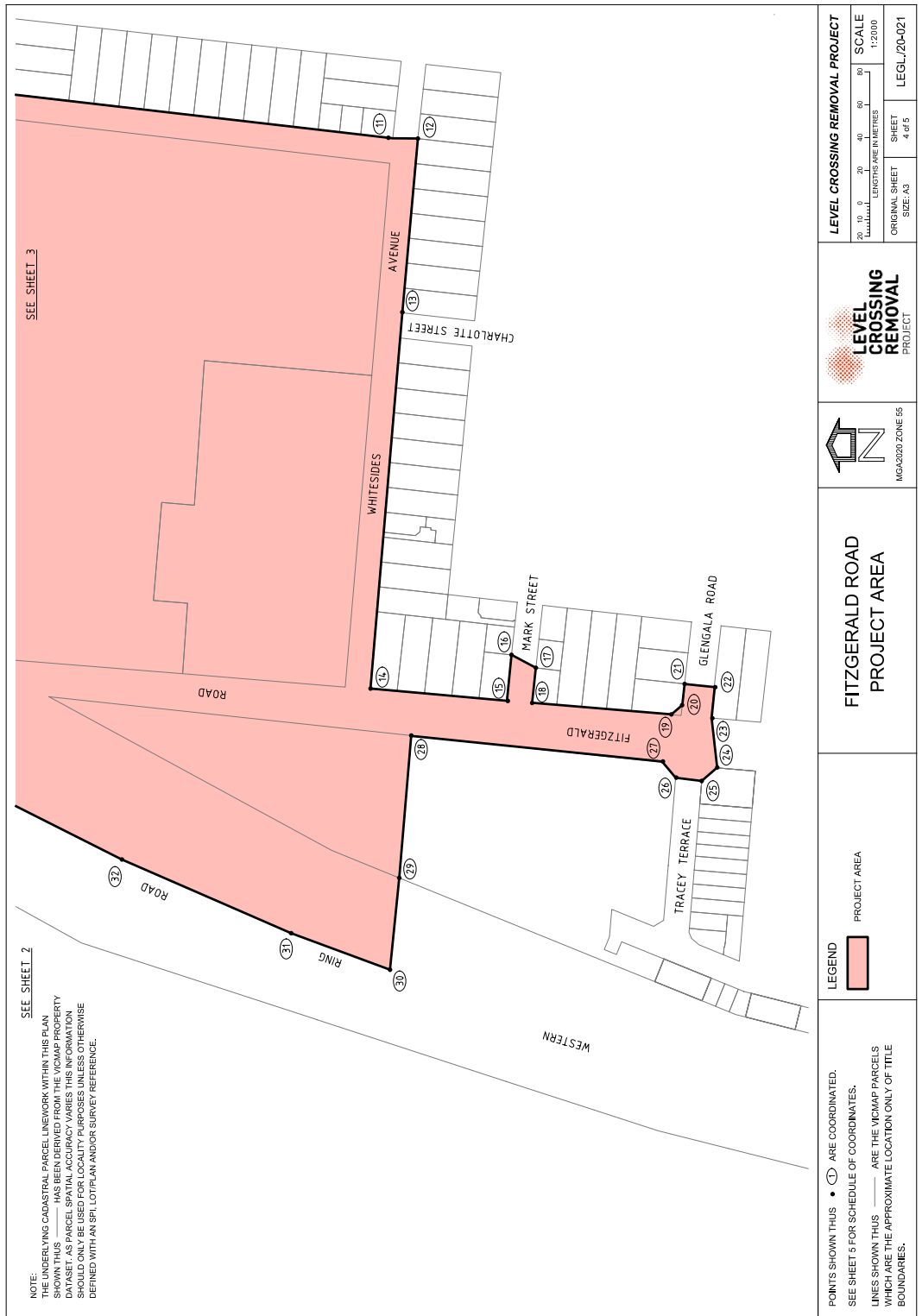
**FITZGERALD ROAD PROJECT AREA**

 MG2020 ZONE 05

**LEVEL CROSSING REMOVAL PROJECT**

 PROJECT

20, 25, 0	0	25	50	75	100	SCALE
LENGTHS ARE IN METRES						1:2500
ORIGINAL SHEET	SIZE: A3		SHEET	3 of 5		LEGL/20-021




**MGA2020 ZONE 55 COORDINATES (METRES)**  
 COORDINATES ROUNDED TO THE NEAREST METRE. ADD 2 DECIMAL PLACES FOR FULL PRECISION

POINT	EAST	NORTH
1	305968	5816461
2	305962	5816400
3	305958	5816361
4	305956	5816346
5	305946	5816252
6	305938	5816173
7	305928	5816079
8	306395	5816029
9	306391	5815958
10	305877	5816013
11	305849	5815774
12	305849	5815759
13	305743	5815768
14	305514	5815788
15	305507	5815705
16	305535	5815702
17	305527	5815687
18	305505	5815689
19	305498	5815605
20	305504	5815598
21	305517	5815597
22	305515	5815578
23	305496	5815580
24	305466	5815577
25	305458	5815586
26	305460	5815602
27	305470	5815610
28	305485	5815763
29	305399	5815770

POINT	EAST	NORTH
30	305343	5815776
31	305365	5815836
32	305410	5815939
33	305482	5816083
34	305431	5816088
35	305422	5816077
36	305257	5816094
37	305144	5816107
38	305336	5816119
39	304938	5816135
40	304866	5816150
41	304781	5816171
42	304713	5816190
43	304722	5816251
44	304928	5816221
45	304342	5816196
46	305034	5816180
47	305151	5816167
48	305437	5816136
49	305513	5816130
50	305500	5816287
51	305536	5816347
52	305557	5816386
53	305575	5816426
54	305759	5816421
55	305972	5816445
56	305933	5816268
57	305912	5816080
58	305870	5816085

POINT	EAST	NORTH
59	305875	5816124
60	305886	5816226

<p><b>COORDINATE SCHEDULE</b></p>	<p><b>FITZGERALD ROAD PROJECT AREA</b></p>	 <p><b>LEVEL CROSSING REMOVAL PROJECT</b></p>			
		<table border="1" style="margin-left: auto; margin-right: auto;"> <tr> <td style="font-size: small;">ORIGINAL SHEET SIZE: A3</td> <td style="font-size: small;">SHEET 8 of 5</td> <td style="font-size: small;">LEGL./20-021</td> </tr> </table>	ORIGINAL SHEET SIZE: A3	SHEET 8 of 5	LEGL./20-021
ORIGINAL SHEET SIZE: A3	SHEET 8 of 5	LEGL./20-021			

**Major Transport Projects Facilitation Act 2009**

(Sections 95(2)(a))

DESIGNATION OF THE PROJECT AREA FOR A DECLARED PROJECT

Robinsons Road, Deer Park Level Crossing Removal Project

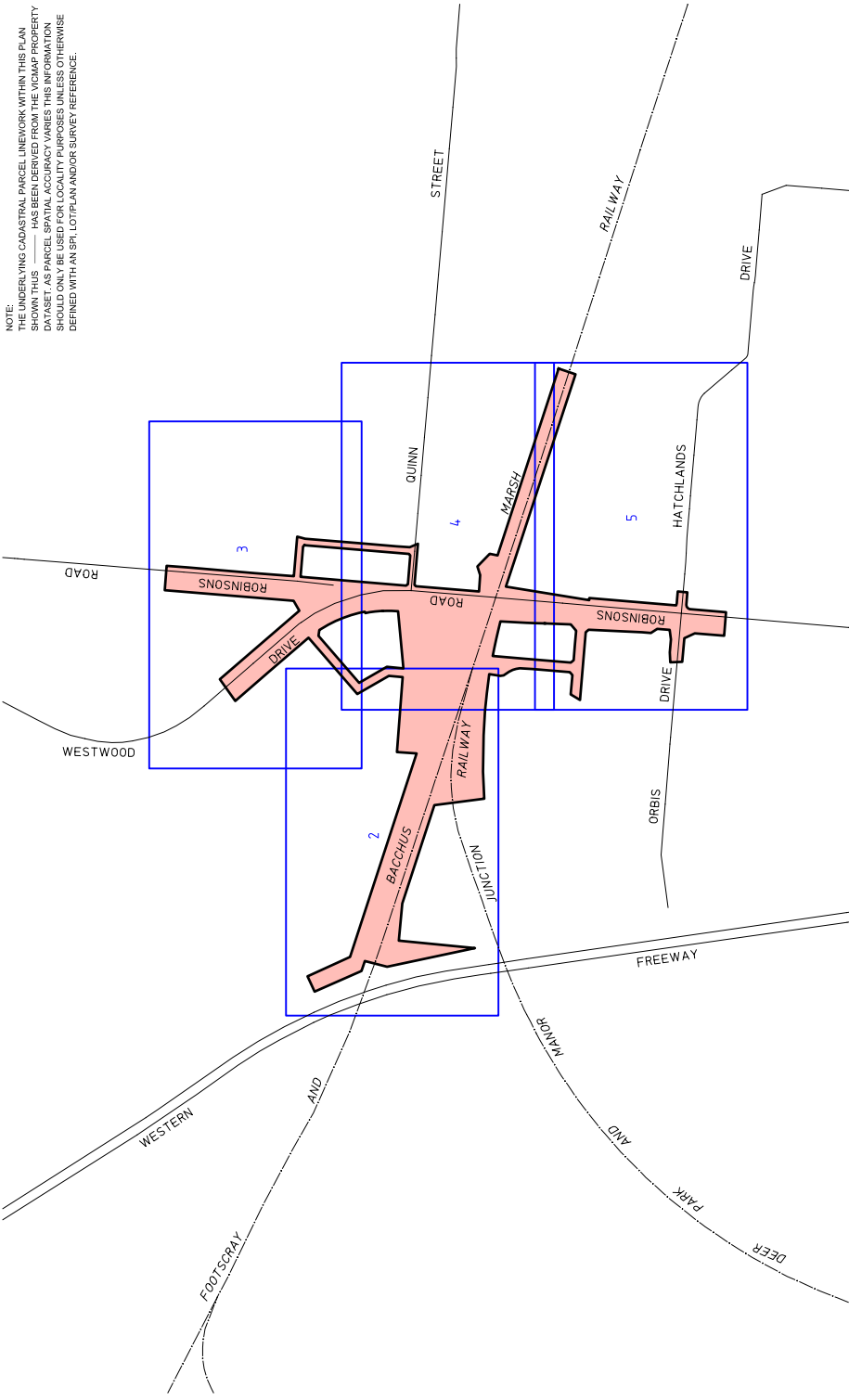
I, Richard Wynne, Minister for Planning, pursuant to section 95(2)(a) of the **Major Transport Projects Facilitation Act 2009** (the Act), designate the area of land shown on the plans signed by the Surveyor-General with references LEGL./20-044 Sheets 1 to 6 (inclusive) lodged at the Central Plan Office on 7 May 2020, and as generally indicated on the map in the Schedule, for the Robinsons Road, Deer Park Level Crossing Removal Project declared by the Premier to be a declared project pursuant to section 10(1)(b) of the Act and published in the Government Gazette on 16 January 2020.

This order comes into effect from the date it is published in the Government Gazette.

Dated 3 August 2020

THE HON. RICHARD WYNNE MP  
Minister for Planning

---



PLAN TO DESIGNATE THE PROJECT AREA PURSUANT TO SECTION 55(2) MAJOR TRANSPORT PROJECTS FACILITATION ACT 2009  
 Lodged in the Central Plan Office  
 Dated this 7th day of May 2020  
 CRAIG LESLIE SANDY  
 Surveyor-General

*C. Sandy*

**LEGEND**  
 PROJECT AREA

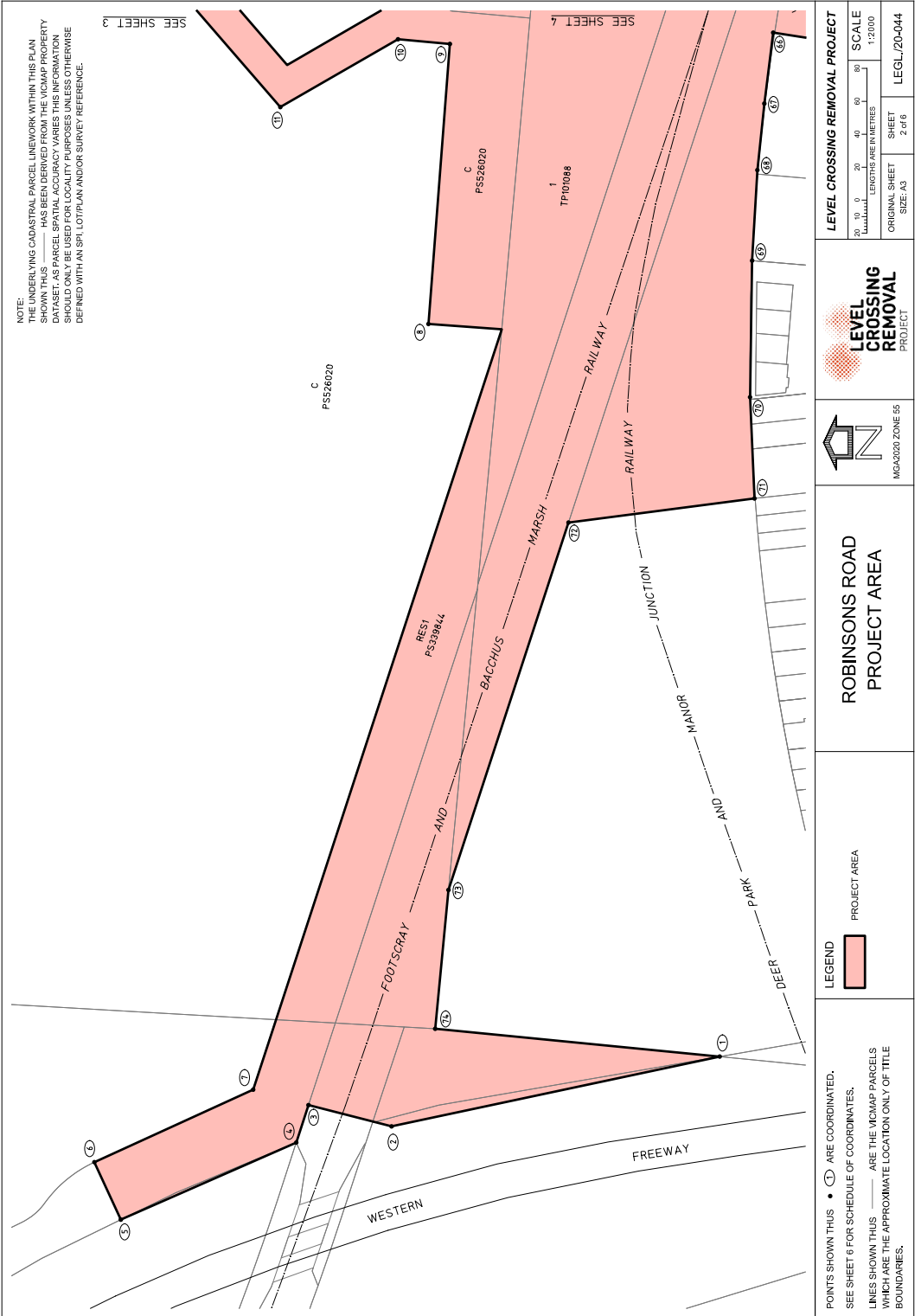
**ROBYNS ROAD PROJECT AREA**

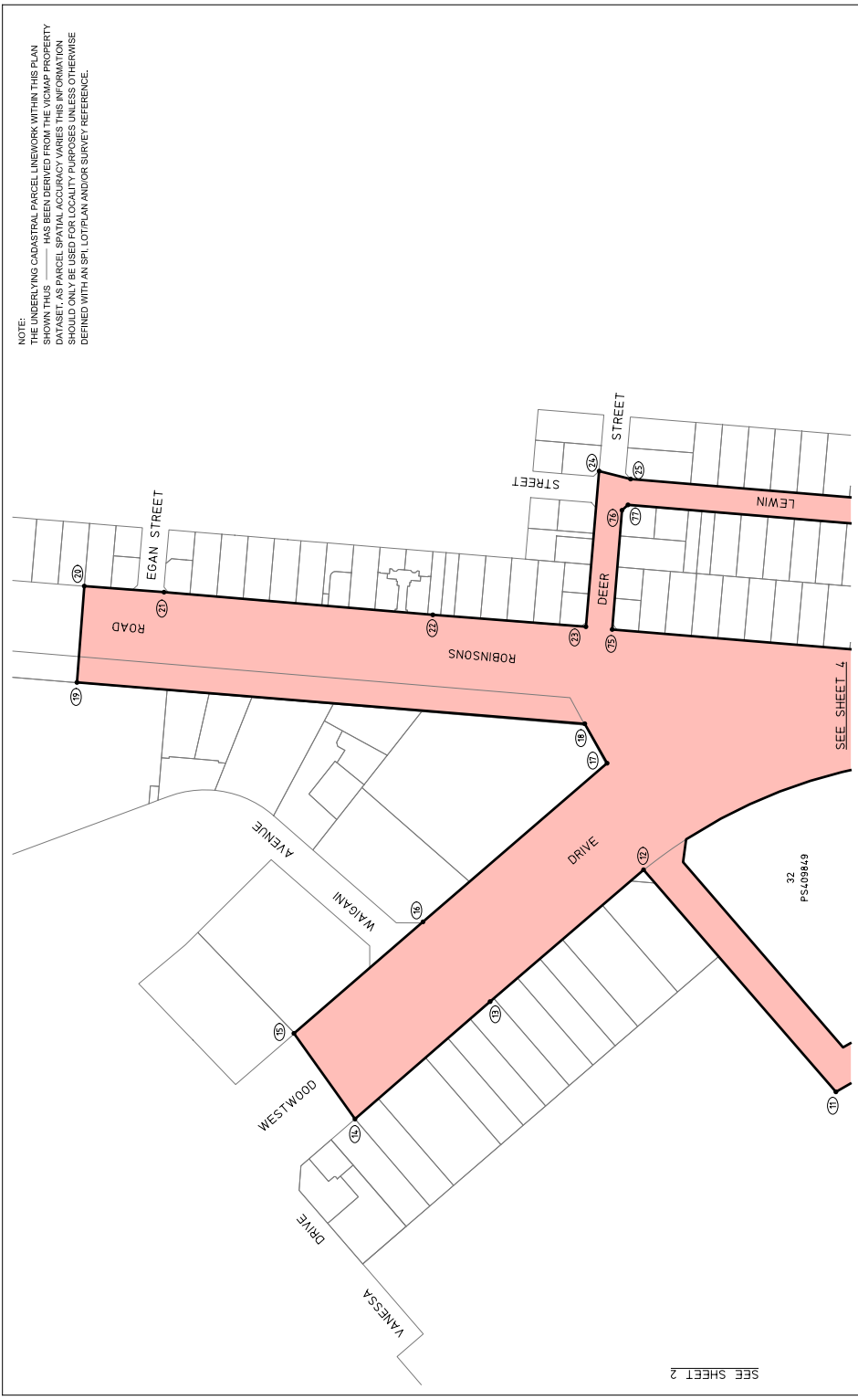
MGA2020 ZONE 55

**LEVEL CROSSING REMOVAL PROJECT**

0 100 200 300	SCALE	1:8000
0 40 80 120 160 200	LENGTHS ARE IN METRES	
ORIGINAL SHEET	INDEX SHEET	LEGLL/20-044
SIZE: A3	1 of 6	







NOTE:  
 THE UNDERLYING CADASTRAL PARCEL LINEWORK WITHIN THIS PLAN  
 SHOWN THUS HAS BEEN DERIVED FROM THE VICMAP PROPERTY  
 DATASET. AS PARCEL SPATIAL ACCURACY VARIES THIS INFORMATION  
 SHOULD ONLY BE USED FOR LOCALITY PURPOSES UNLESS OTHERWISE  
 DEFINED WITH AN SPL, LOT PLAN AND/OR SURVEY REFERENCE.

SEE SHEET 2

POINTS SHOWN THUS • ARE COORDINATED.  
 SEE SHEET 6 FOR SCHEDULE OF COORDINATES.  
 LINES SHOWN THUS ARE THE VICMAP PARCELS  
 WHICH ARE THE APPROXIMATE LOCATION ONLY OF TITLE  
 BOUNDARIES.

**LEGEND**

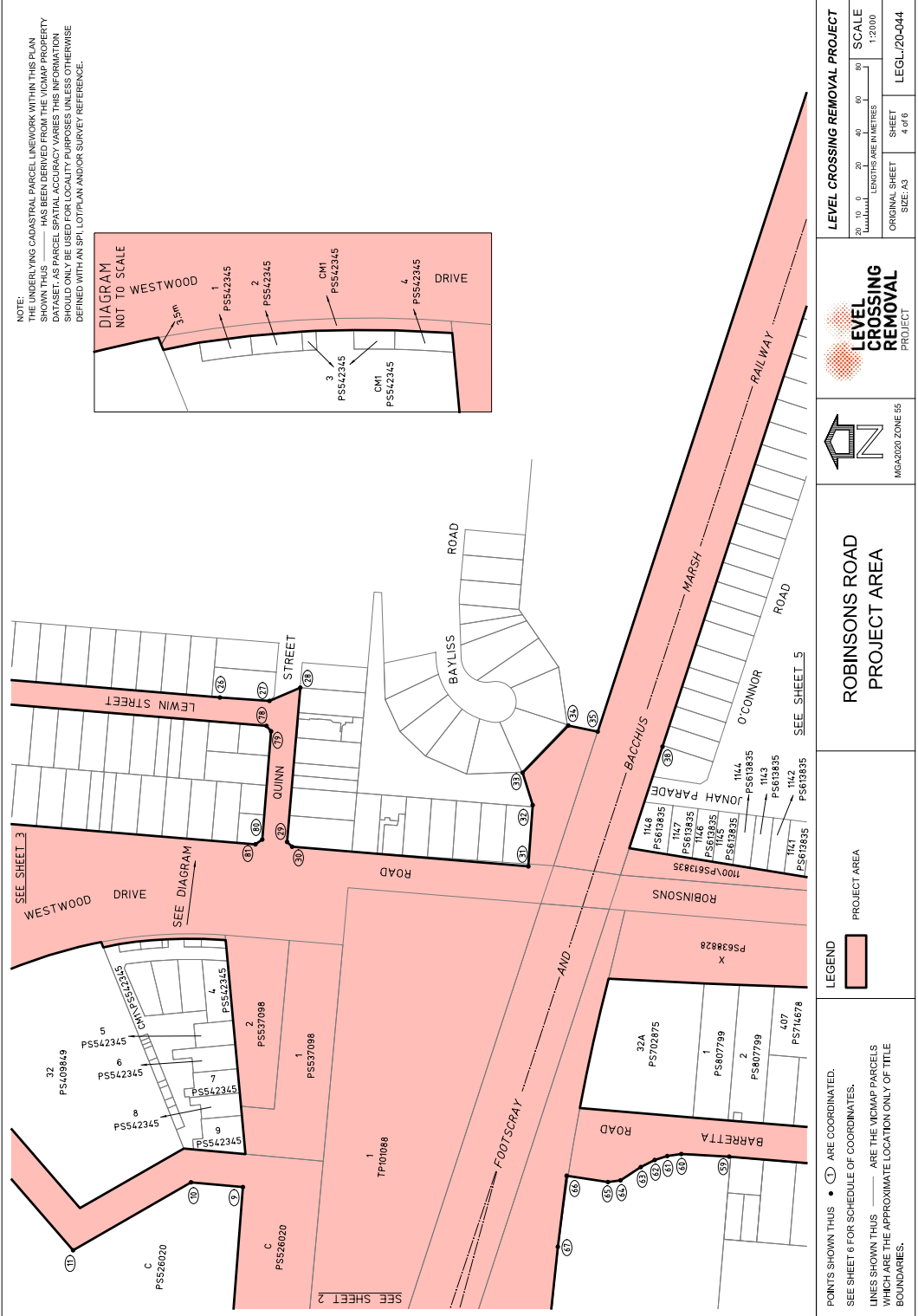
PROJECT AREA

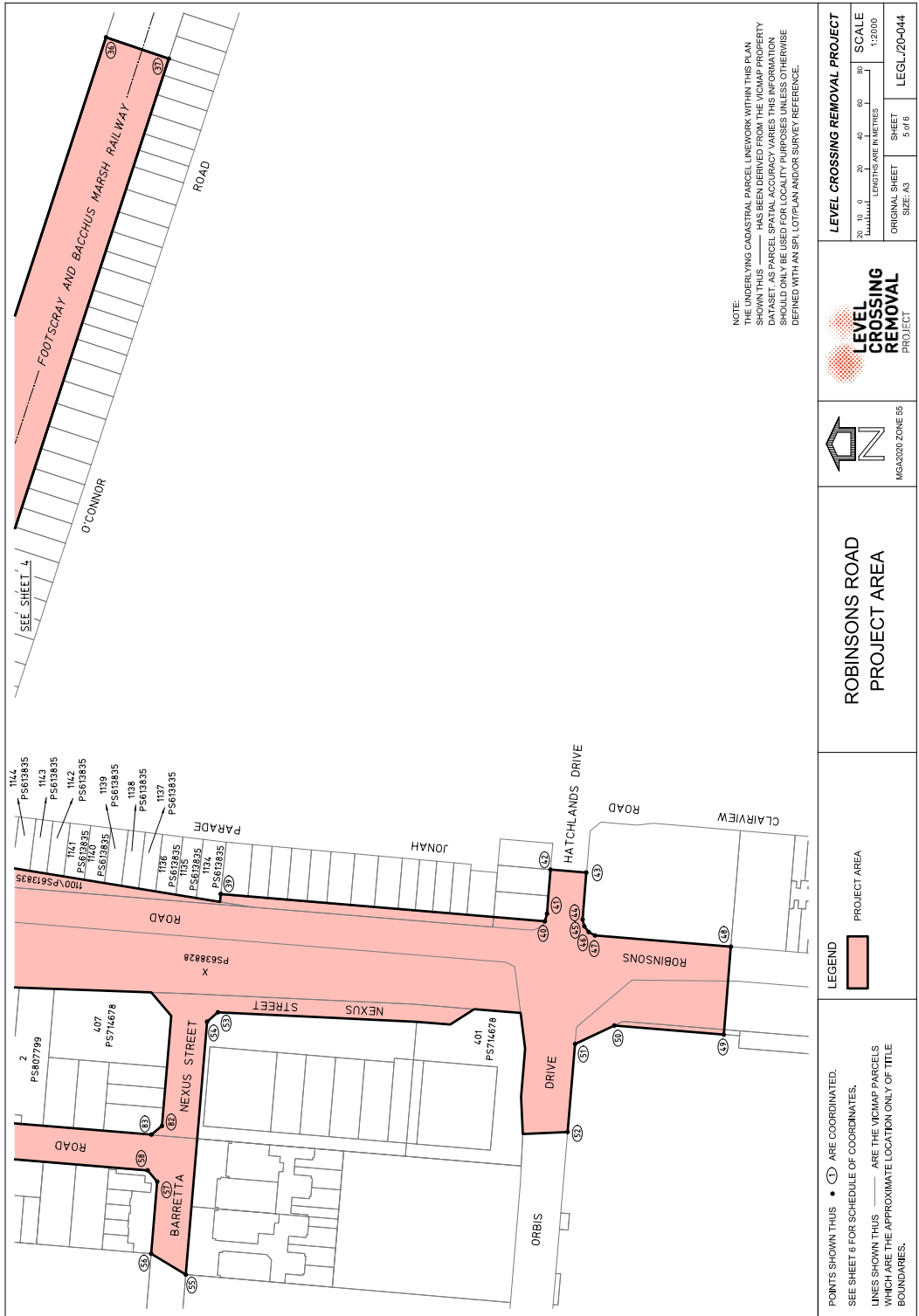
**ROBYNS ROAD PROJECT AREA**

MGA2020 ZONE 55

**LEVEL CROSSING REMOVAL PROJECT**

20	40	60	80	100
LENGTHS ARE IN METRES				
ORIGINAL SHEET SIZE: A3			SHEET 3 of 6	
LEVEL CROSSING REMOVAL PROJECT				SCALE 1:2000
				LEGLL/20-044





NOTE:  
 THE UNDERLYING CADASTRAL PARCEL LINESWORK WITHIN THIS PLAN  
 IS DERIVED FROM THE VICMAP PARCEL LINESWORK DATASET. THIS  
 DATASET AS PARCEL SPATIAL ACCURACY VARIES THIS INFORMATION  
 SHOULD ONLY BE USED FOR LOCALITY PURPOSES UNLESS OTHERWISE  
 DEFINED WITH AN SPL LOT/PLAN AND/OR SURVEY REFERENCE.

<b>LEVEL CROSSING REMOVAL PROJECT</b>	
20 10 0 20 40 60 80 METRES	SCALE 1:2000
ORIGINAL SHEET SIZE: A3	SHEET 5 of 6
LEGL/20-044	



**ROBINSONS ROAD  
 PROJECT AREA**

**LEGEND**

● (1) ARE COORDINATED.  
 SEE SHEET 6 FOR SCHEDULE OF COORDINATES.

— ARE THE VICMAP PARCELS  
 WHICH ARE THE APPROXIMATE LOCATION ONLY OF TITLE  
 BOUNDARIES.

PROJECT AREA

POINTS SHOWN THUS ● (1) ARE COORDINATED.  
 SEE SHEET 6 FOR SCHEDULE OF COORDINATES.  
 LINES SHOWN THUS — ARE THE VICMAP PARCELS  
 WHICH ARE THE APPROXIMATE LOCATION ONLY OF TITLE  
 BOUNDARIES.

MSGA2020 ZONE 55 CO-ORDINATES (METRES)  
 COORDINATES ROUNDED TO THE NEAREST METRE, ADD 2 DECIMAL PLACES FOR FULL PRECISION

POINT	EAST	NORTH
1	301561	5817023
2	301518	5817223
3	301531	5817273
4	301509	5817281
5	301462	5817387
6	301497	5817403
7	301541	5817407
8	302006	5817200
9	302176	5817187
10	302179	5817219
11	302137	5817290
12	302265	5817401
13	302189	5817489
14	302122	5817567
15	302171	5817602
16	302235	5817528
17	302327	5817422
18	302349	5817435
19	302373	5817727
20	302428	5817723
21	302425	5817677
22	302412	5817522
23	302405	5817434
24	302495	5817427
25	302490	5817408
26	302473	5817201
27	302471	5817171
28	302479	5817152
29	302385	5817161
30	302382	5817157

POINT	EAST	NORTH
31	302370	5817014
32	302407	5817012
33	302427	5817018
34	302456	5816990
35	302452	5816972
36	302876	5816833
37	302863	5816795
38	302443	5816933
39	302355	5816764
40	302339	5816567
41	302343	5816565
42	302370	5816563
43	302368	5816541
44	302340	5816544
45	302336	5816543
46	302332	5816540
47	302330	5816536
48	302323	5816454
49	302270	5816458
50	302275	5816524
51	302264	5816548
52	302211	5816553
53	302283	5816765
54	302278	5816772
55	302124	5816785
56	302137	5816806
57	302180	5816802
58	302187	5816808
59	302194	5816892
60	302196	5816921

POINT	EAST	NORTH
61	302195	5816930
62	302192	5816938
63	302188	5816946
64	302180	5816958
65	302179	5816966
66	302183	5816991
67	302140	5816996
68	302099	5817001
69	302044	5817004
70	301961	5817005
71	301900	5817002
72	301885	5817115
73	301662	5817188
74	301578	5817196
75	302404	5817419
76	302472	5817413
77	302475	5817410
78	302456	5817173
79	302452	5817170
80	302387	5817176
81	302384	5817180
82	302214	5816799
83	302209	5816806

COORDINATE  
 SCHEDULE

ROBINSONS ROAD  
 PROJECT AREA



LEVEL CROSSING REMOVAL PROJECT

ORIGINAL SHEET  
 SIZE: A3

SHEET  
 6 of 6

LEGL. 2/0-044

This page was left blank intentionally

This page was left blank intentionally

# ive

The *Victoria Government Gazette* is published by IVE Group Limited with the authority of the Government Printer for the State of Victoria

© State of Victoria 2020

This publication is copyright. No part may be reproduced by any process except in accordance with the provisions of the Copyright Act.

Address all enquiries to the Government Printer for the State of Victoria  
Level 2, 1 Macarthur Street  
Melbourne 3002  
Victoria Australia

## How To Order



### Retail & Mail Sales

### Victoria Government Gazette

Ground Floor, Building 8,  
658 Church Street,  
Richmond 3121

DX 106 Melbourne



### Telephone

(03) 8523 4601



### Fax

(03) 9600 0478

### email

[gazette@ivegroup.com.au](mailto:gazette@ivegroup.com.au)

Price Code A