

McDonald Street, Mordialloc
Bear Street, Mordialloc
Station Street, Aspendale

Consultation report

September 2023

Level crossing at McDonald Street, Mordialloc





Level crossing at Bear Street, Mordialloc



Contents

Consultation summary	5
Vision and values survey	6
About you	7
Travelling around the bayside area	9
Your local area	11
New Mordialloc Station and precinct	12
How your feedback has influenced design	14
Thank you and next steps	15
Keeping in touch	15

The Victorian Government is removing 27 dangerous level crossings and building 17 new stations, making the Frankston Line level crossing free. This is part of a commitment to remove 110 dangerous and congested level crossings across Melbourne by 2030, reducing congestion and allowing more trains to run more often.

We're removing the level crossings at McDonald Street, Mordialloc and Station Street, Aspendale, building new rail bridges and a new Mordialloc Station.

Improvements to the local traffic network will allow the level crossing at Bear Street, Mordialloc to be closed, creating a vibrant station precinct with safe access for pedestrians and cyclists.



Consultation summary

In June and July 2023, we asked you to share your ideas and feedback about what you value in your local area and what you would like to see created as part of the project.

We received more than 800 valuable pieces of feedback via online surveys, community pop ups and our contact centre.



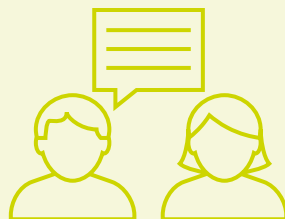
509

vision and values surveys completed

28 *enquiries via the contact centre*



55 *questions via Engage Victoria*



300 *people attended six community pop up sessions*



Level crossing at Station Street, Aspendale

Vision and values survey

We invited community members to complete a vision and values survey.

The purpose of this survey was to understand what the local community values about their area, and seek ideas and feedback on the new Mordialloc Station precinct.

What we heard

The major destinations for the local community are the Main Street shopping strip, local parks and sporting facilities, Mordialloc Station and the beach.

73 per cent of respondents use Mordialloc Station and the majority of people walk to the station, while some people drive and park, and fewer get dropped off.

The majority of people drive around the south-east, while many people walk around their local area or cycle.

Locals value the beach, the Mordialloc Creek, the unique character of the shopping precinct including the iconic palm trees, and local history and landmarks including the water tower and history of the station.

People would like to see improved traffic flow and access around the area, more trees and greenery, community spaces, improved directional signage and access for pedestrians and bike riders.

A safer and better-connected station precinct with improved walking and cycling connections to local shops and the beach are key priorities for the community. Improved transport connectivity and accessibility are also important.

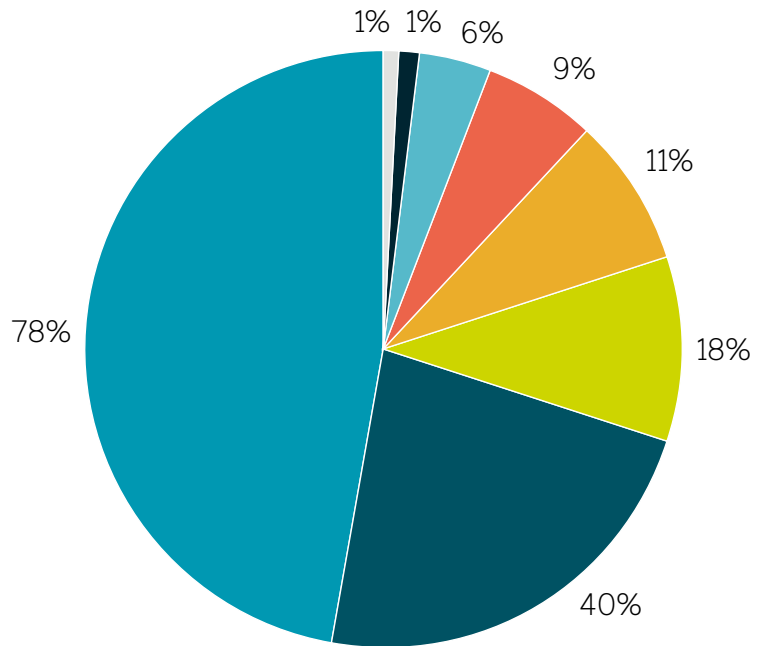
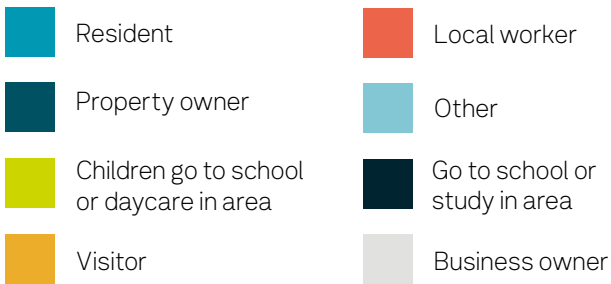
There is a strong preference for new public artwork, trees and plants, places to gather and sit, and designs that incorporate local Aboriginal culture and local heritage.



About you

What is your connection to the local area?

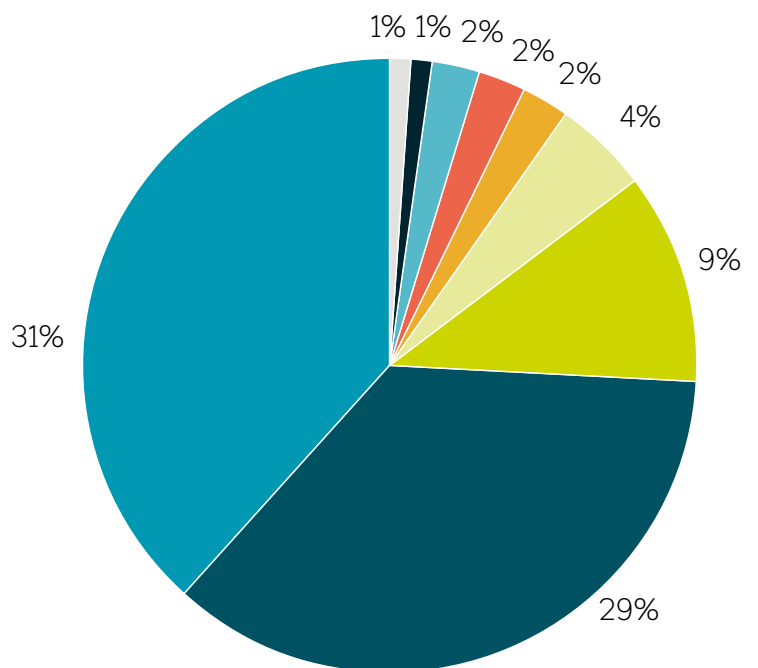
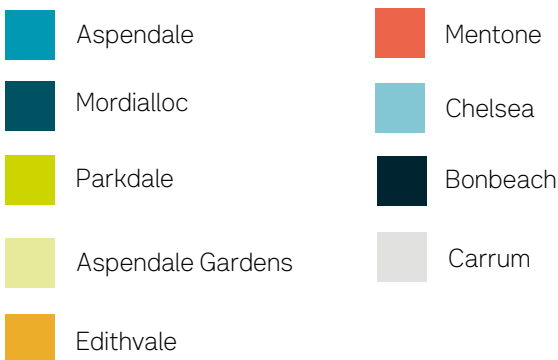
The majority of respondents are residents and/or property owners.



| Respondents may select multiple responses

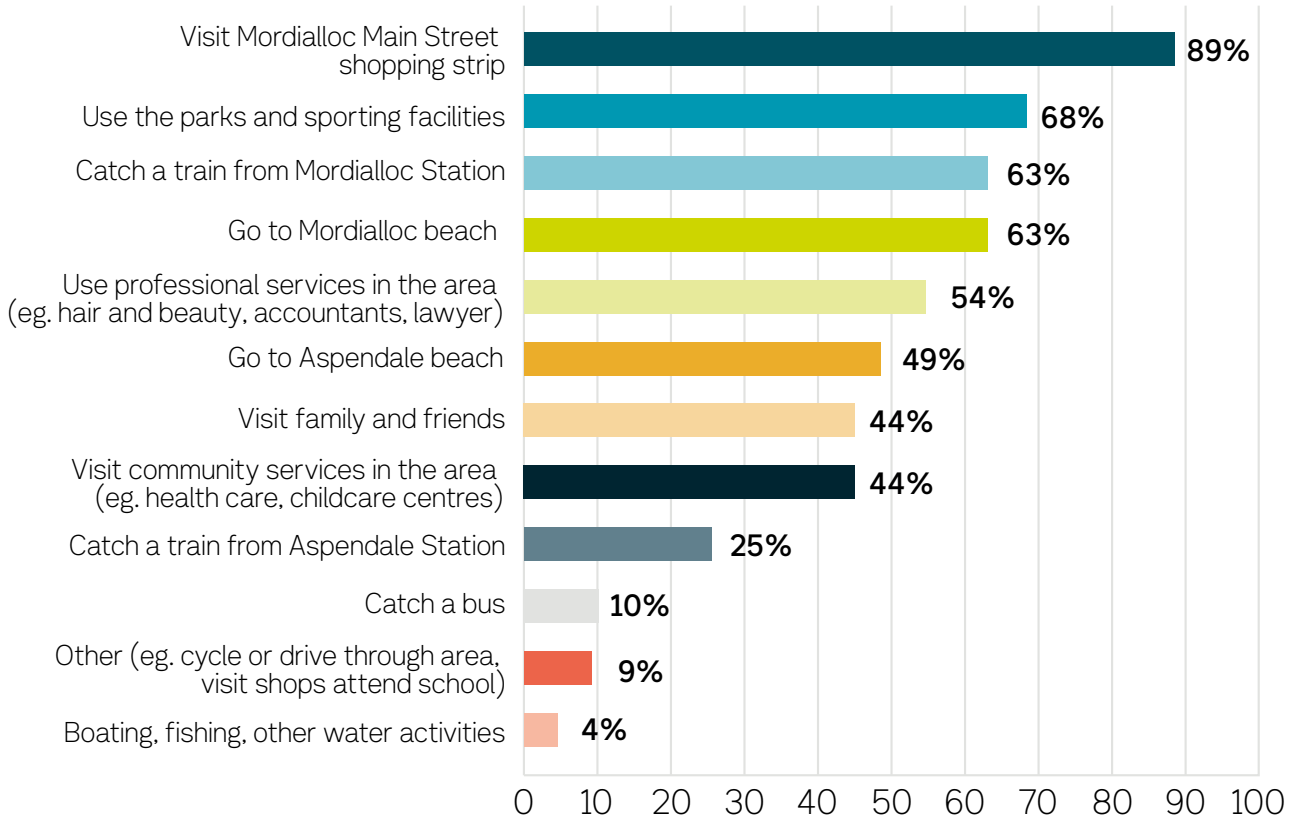
Which suburb do you live in?

The majority of people live in Aspendale or Mordialloc (60 per cent)

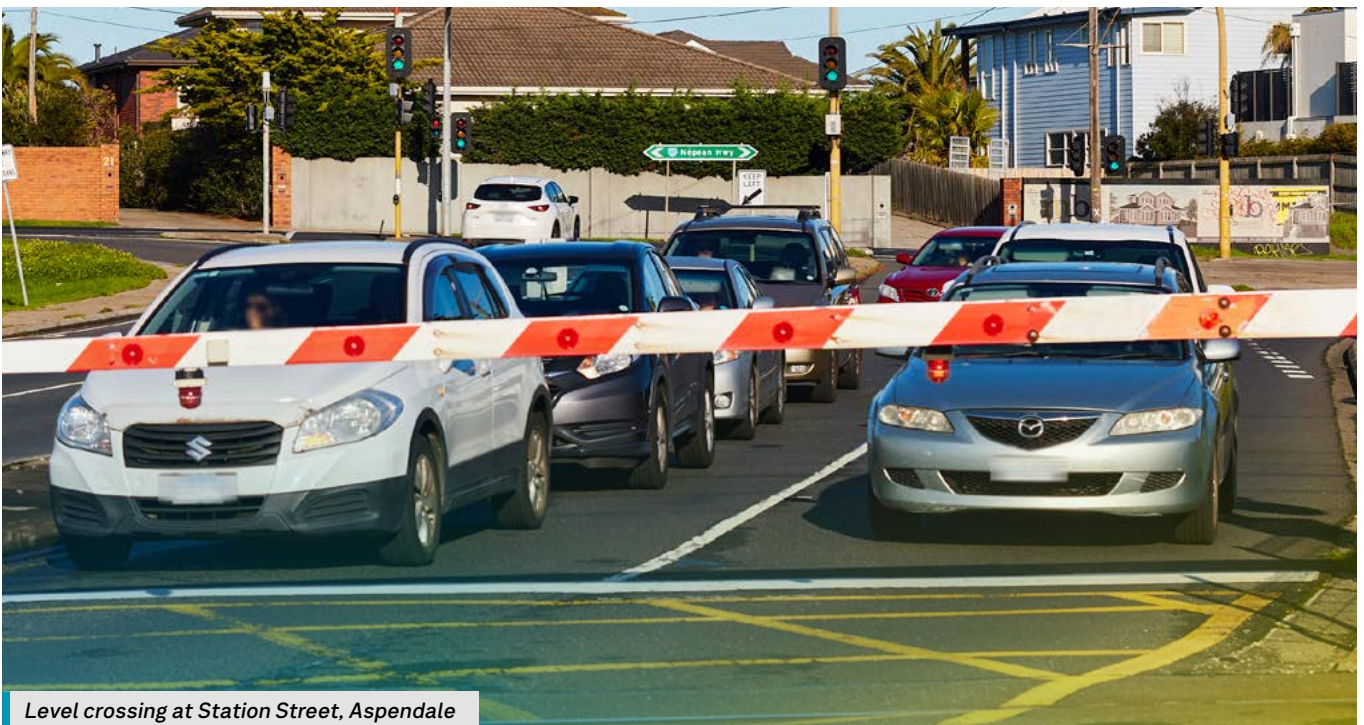


What do you do while you're in Mordialloc?

Major destinations for the local community are the Mordialloc Main Street shopping strip, local parks and sporting facilities. A large part of the community also catch a train to or from Mordialloc Station and visit the beach.



Total responses 2,685 (note that multiple responses could be made)

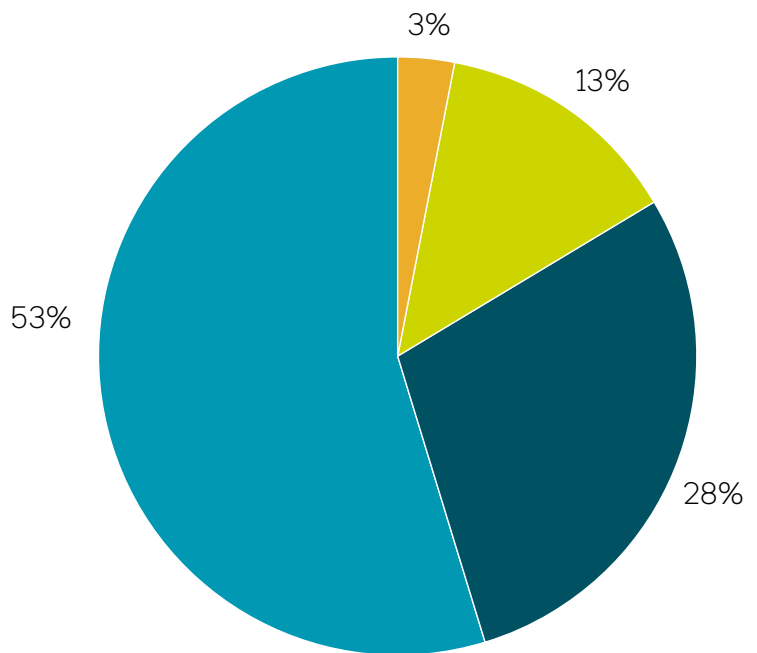
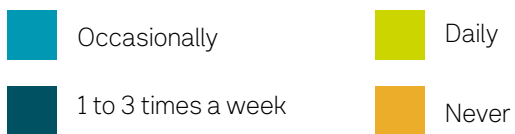


Level crossing at Station Street, Aspendale

Travelling around the bayside area

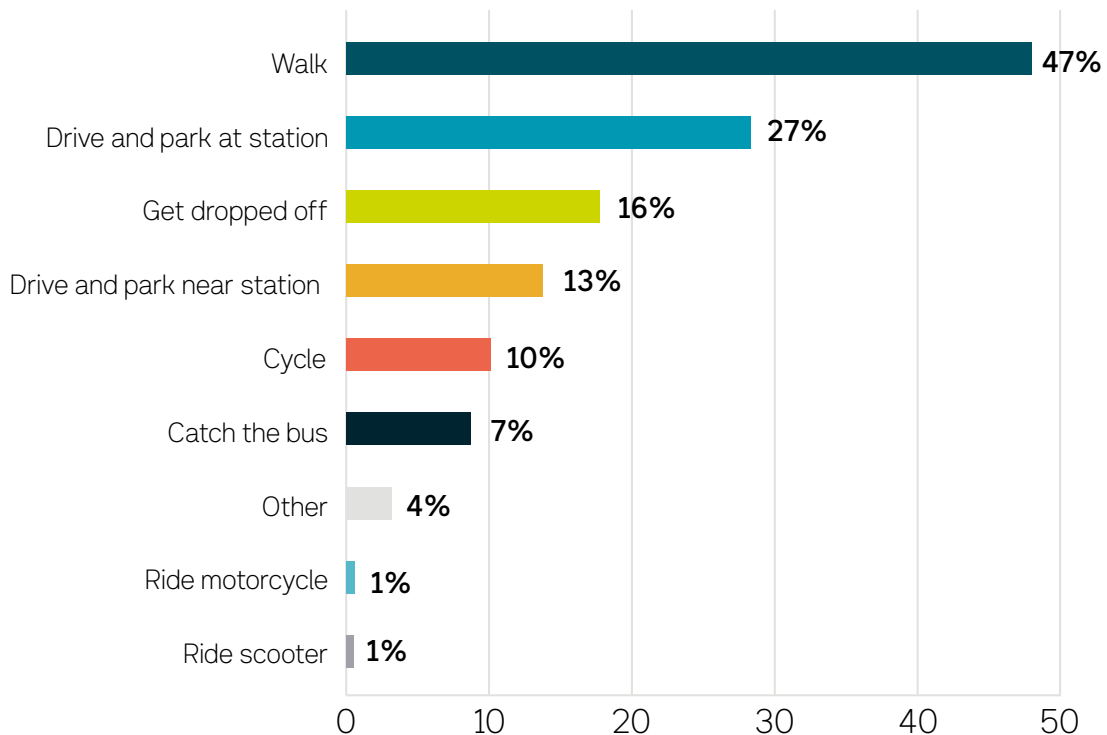
How often do you use the Frankston Line?

We heard that many people use the Frankston line occasionally (53 per cent), while some people use it one to three times a week (28 per cent) and a few people use it daily (13 per cent).



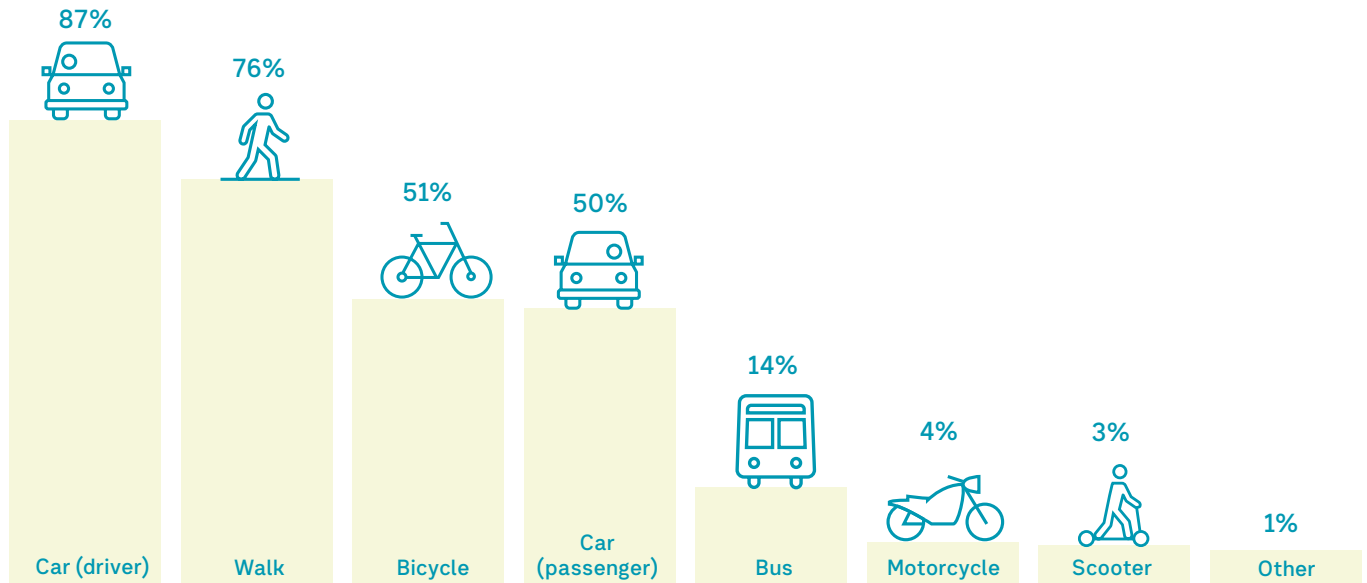
Do you use Mordialloc Station and how do you get there?

We found that 73 per cent of respondents use Mordialloc Station and the majority of people walk to the station, while fewer people drive and park or get dropped off.



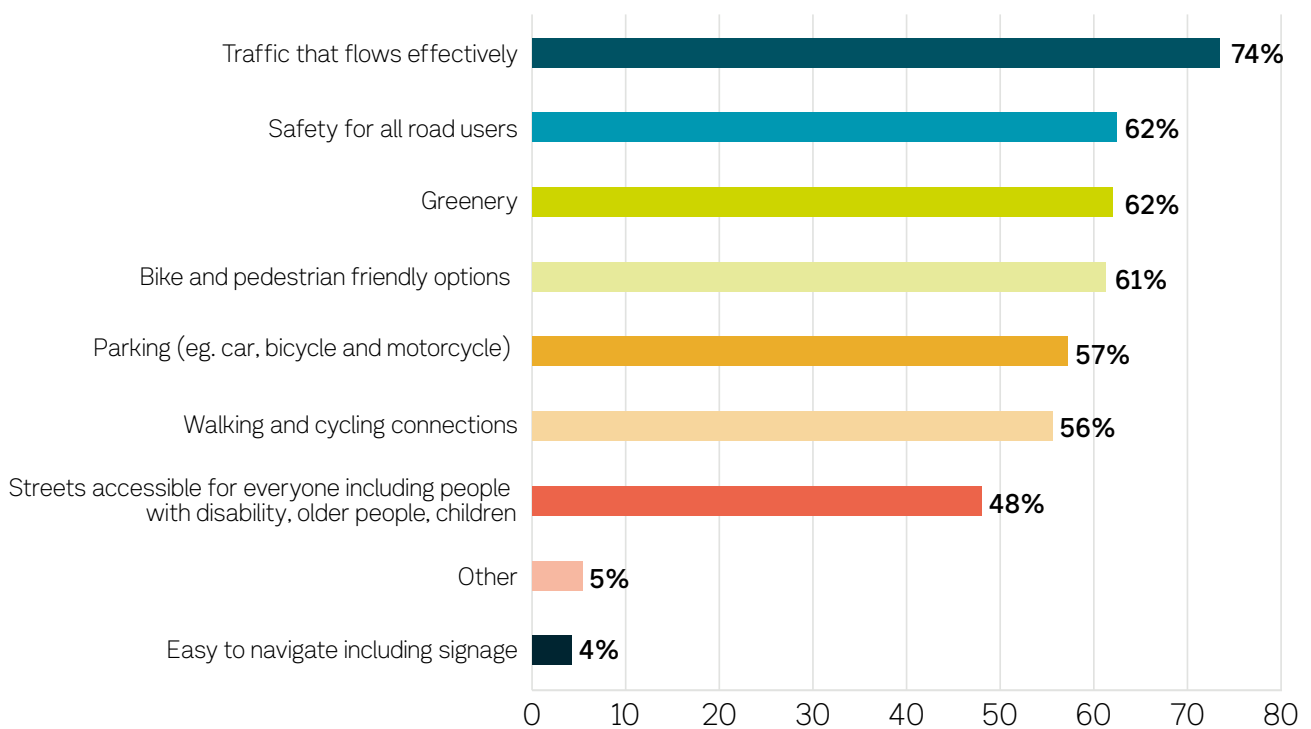
Total responses 643 (note that multiple responses could be made)

We also asked what other modes of transport people use in Mordialloc, Aspendale and the surrounding suburbs, with most people driving a car (87 per cent), walking (76 per cent) or cycling (51 per cent).



When you're moving around Mordialloc, what is the most important to you?

We heard the most important aspects when moving around Mordialloc are traffic that flows effectively (74 per cent), safety for all roader users (62 per cent) and greenery (62 per cent). The community also value bike and pedestrian friendly options (61 per cent).



Total responses 2,190 (note that multiple responses could be made)

Your local area

What do you value about your local area?

As part of our engagement, we asked what you value most about your local area, for example, unique characteristics, landmarks or places that make Mordialloc and Aspendale special to you.

Many locals love the unique features of Mordialloc including the beach, Mordialloc Creek, and the vibrant shopping precinct including the iconic palm trees. They also value the local history and landmarks in the area, including the water tower, the history of the station, and the local Aboriginal culture and history.

The beach and coastal feel of Mordialloc and Aspendale is a key attraction, with many people enjoying the walking and cycling paths around the area.

Many people commented on the vibrant retail precinct, with easy access to the shops and beach. Many also noted that the area is family friendly, and is a tourist attraction for all age groups.

People also love the trees and greenery that these areas provide, contributing to community spaces such as playgrounds, local parks and reserves.

Key themes we heard include:

- Unique identity and village feel
- Main shopping strip
- Iconic landmarks (palm trees)
- Trees and greenery
- Walking and cycling connections
- Historical and heritage features

Comments from respondents

‘Ease of travel and connectivity’

‘Native greenscape’

‘The entire area is special! Its heritage, its family friendly parks, walking and cycling tracks, Mordialloc Creek and boat access.’

‘Village-type streetscape’

‘The water tower is an important landmark that has been there for a very long time.’

‘Main Street palms and historic features’

‘Boat and fishing landmarks, green parkland around the creek.’

‘Wildlife habitats in the wetlands, parks, golf courses and rail corridor’

‘The activity, nightlife, restaurants and cafes all within close proximity to the train. Mordialloc is the main nighttime destination for the broader bayside area.’

New Mordialloc Station and station precinct

What do you think could be improved about the current Mordialloc Station precinct?

Many respondents provided unique and specific ideas for how the station could be improved.

Key themes

Safety

Safe access to the station precinct was important to the community. This includes improved lighting, CCTV, protective service officers and overall security around the station precinct.

Improved connections

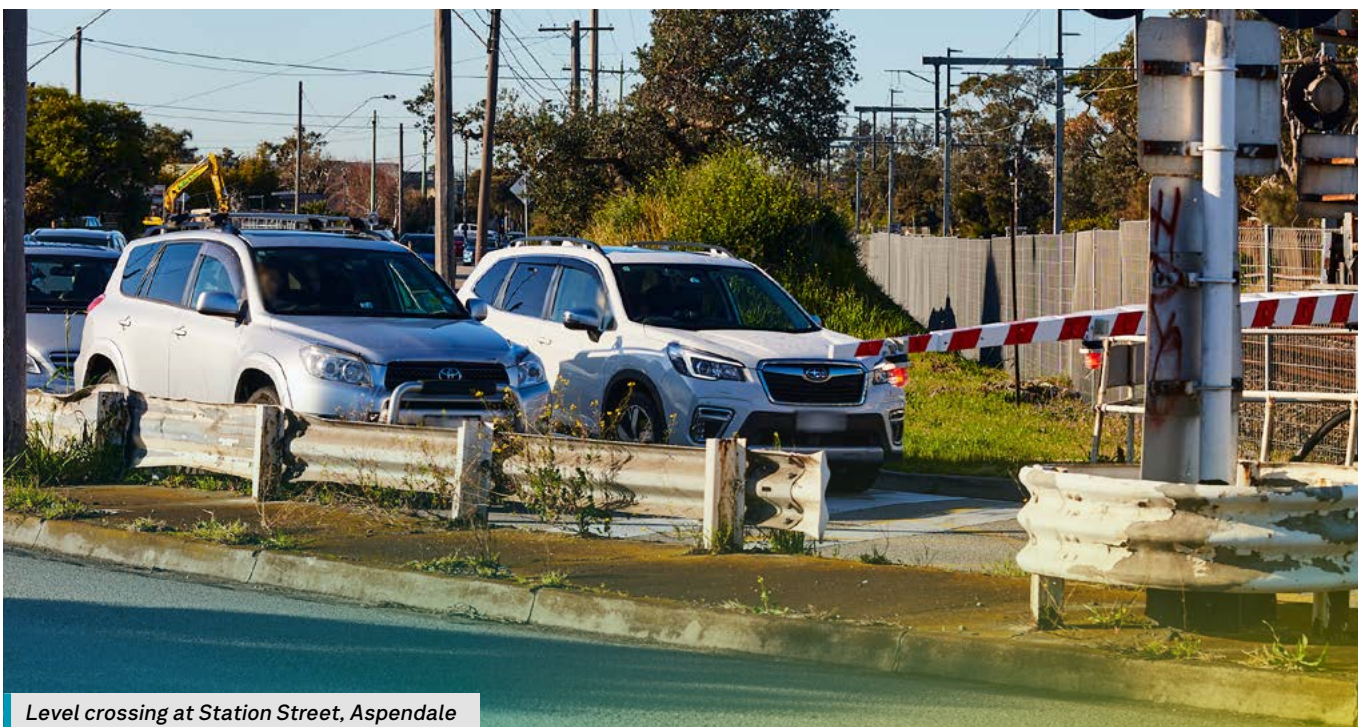
You told us the walking and cycling paths could be improved. You also want to see better signage and pedestrian access to the station. Suggestions include multiple station entrances and safer pedestrian connections.

We also heard that local access could be improved - connecting pedestrians to local shops and the beach.

Urban design

We heard the look and feel of the station precinct could be improved. Suggestions include reflecting the local history in the design and an artistic aesthetic for the station building.

There were also suggestions to improve the use of forecourt areas and create better station amenities and facilities, including toilets and shelter.



Level crossing at Station Street, Aspendale

What are the most important aspects you believe the new station precinct should deliver?

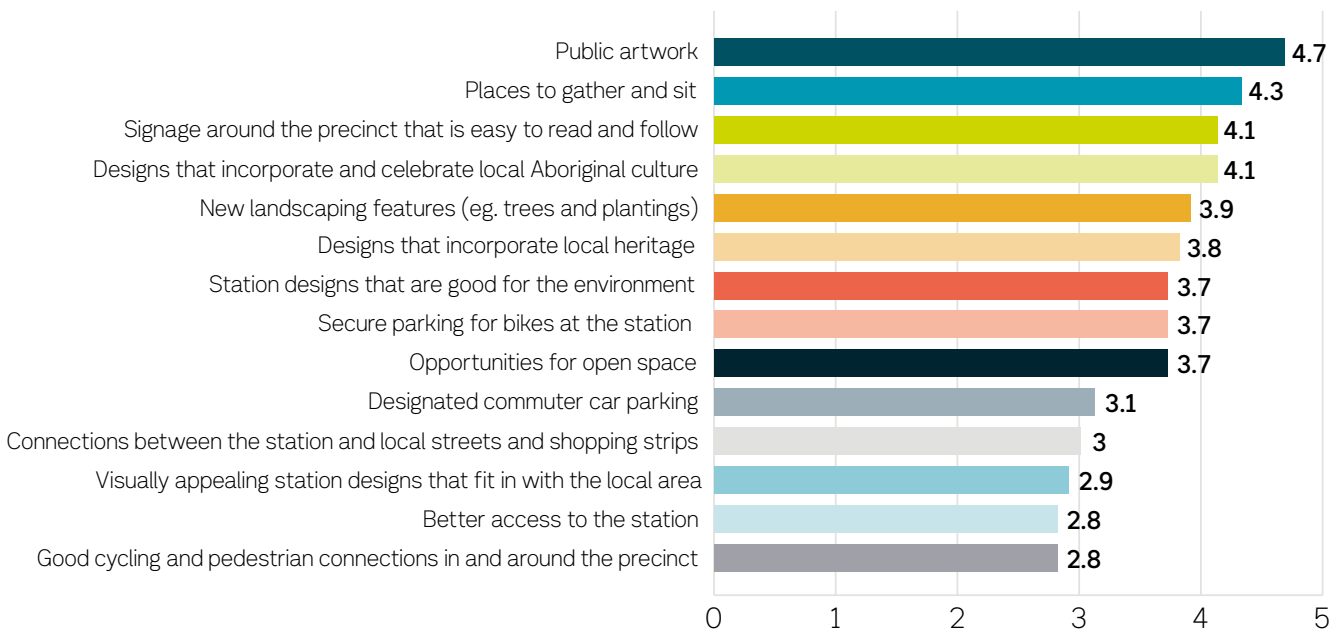
We heard that new public artwork and places to sit and gather at the station are priorities for the community.

Also important to locals are easy to read and follow signs around the station precinct, and designs that incorporate and reflect local Aboriginal culture.

We also asked respondents to share anything else we should deliver as part of the new station precinct.

Key themes we heard:

- Pedestrian and cycling access and facilities
- Traffic flow and connectivity
- Reflect history in design
- Improved lighting and security



This question was based on preferences and each category has been weighted and given a score.



Level crossing at Bear Street, Mordialloc

How your feedback has influenced the design

In September 2023, we released concept designs for the project. The below table shows how community feedback has influenced the designs to date.

What we heard	How feedback has influenced the design
People love the unique identity of Mordialloc including the beach, creek, the shopping precinct. We also heard that people value the iconic palm trees, and historic landmarks such as the water tower and station.	The look and feel of the station precinct will be designed to reflect the unique character and history of the local area close to the local retail hub.
Locals would like to see more trees and greenery , including native and indigenous vegetation with landscaping improvements near Mordialloc Station precinct and parklands for the community and local wildlife.	During concept design, we are seeking further community input to help shape landscaping and planting around the station precinct. We will also be engaging with representatives from the Registered Aboriginal Party (RAP), the Bunurong Land Council Aboriginal Corporation, about landscaping in the open space near Station Street.
People would like to see improved traffic flow and access around the area, including safe and efficient access to the station, the shopping precinct, local schools, and the broader road network.	<p>A new rail bridge over McDonald Street will improve traffic flow and safety. We will also upgrade the intersection at Nepean Highway.</p> <p>Improvements to the local traffic network will allow Bear Street to be closed to vehicles, creating a vibrant station precinct with safe access for pedestrians and cyclists.</p> <p>A new rail bridge over Station Street and an upgraded intersection relocated to Pine Crescent, with signalised pedestrian crossings at Nepean Highway and Station Street will improve traffic flow and safety.</p>
A safer and better-connected station precinct with improved walking and cycling connections to local shops and beach are key priorities for the community. Connectivity with the broader cycling and shared use path network for locals and visitors are also important.	<p>Rail passengers can look forward to a new Mordialloc Station with updated facilities, landscaping, all-abilities access, safe pedestrian connections, and improved lighting and surveillance.</p> <p>The elevated station will remain in the heart of Mordialloc close to the local retail hub, with two entries including McDonald Street and the current forecourt, providing safer and easier movements in and around the station precinct.</p> <p>A new shared use path will improve access to the station and local area as well as connection with the broader shared use path network.</p> <p>A dedicated bike lane will separate cyclists and pedestrians through the station precinct.</p>
We heard you would like community spaces that feature new public artwork, places to gather and sit, places that are safe, well-lit, accessible for all with improved directional signage. People would also like to see local Aboriginal culture and history reflected in the project.	During concept design, we are seeking further community input to help shape the public open space around the Mordialloc Station precinct, including the new station forecourt and Bear Street. This will include opportunities for artwork, landscaping, and enhanced urban design to create safe places the community can enjoy.

Thank you and next steps

Thank you to everyone who took the time to share ideas and tell us your thoughts on the Mordialloc Level Crossing Removal Project design opportunities.

Your feedback will continue to shape our designs.

We'll be releasing updated designs next year.

Keeping in touch

To stay up to date subscribe to our email updates at levelcrossings.vic.gov.au/subscribe and select Mordialloc level crossings.

If you have any questions or would like more information, call **1800 105 105** or email contact@levelcrossings.vic.gov.au 24 hours a day, seven days a week.

Follow us on social media or send us a private message on our Facebook page.







Level crossing at McDonald Street, Mordialloc

levelcrossings.vic.gov.au

contact@levelcrossings.vic.gov.au



For languages other than English, please call 9209 0147.

1800 105 105 (call anytime)     

Please contact us if you would like this information in an accessible format. If you need assistance due to a hearing or speech impairment, visit relayservice.gov.au

