

Glen Huntly 2

New Glen Huntly Station

Glen Huntly Road and Neerim Road, Glen Huntly / August 2023

Level crossing removal community update



Trains are back and roads are open in Glen Huntly

We're making the Frankston Line level crossing free by removing all 27 of the dangerous and congested level crossings by 2029 and building 17 new stations, improving safety, reducing congestion and allowing more trains to run more often.

The new Glen Huntly Station is ready for train passengers. Glen Huntly Road and Neerim Road are open, and the 67 tram is stopping at Glen Huntly Road again.

Importantly, Glen Huntly is level crossing free for good. To get here, we've:

- removed more than 160,000 cubic metres of material – enough to fill 64 Olympic pools – to dig the trench for the new rail line
- installed 3000 piles that will provide structural support to the trench

- installed 6000 sleepers: the horizontal slats that are laid underneath the track
- removed one of Melbourne's last tram squares: the complicated infrastructure needed when tram tracks cross over a rail level crossing.

We're now working to complete Glen Huntly Station, landscaping and other finishing touches.

Thank you for your patience, while we complete these important works.

Why these level crossings had to go



About 20,000 vehicles travel through each day



Boom gates could be down for 1 hour in the weekday peak



Improving safety for pedestrians, cyclists, tram passengers and drivers



Better connections between the station, shops, homes and amenities



A new Glen Huntly Station with modern and safe facilities



Sign up for updates
levelcrossings.vic.gov.au



New Glen Huntly Station forecourt



Say hello to your new Glen Huntly Station

We've completed major works on Glen Huntly Station. Minor works will continue until early 2024 as we do the finishing touches, including the station car parks. In the meantime, enjoy your new station facilities including:

- Stairs to platforms
- Lifts to platforms providing improved accessibility access
- CCTV and improved lighting
- Sheltered seating on the platforms
- Waiting room and toilet facilities.

New open spaces and shared use paths will be ready for locals to enjoy in 2024.

Footpath buggy finds a lot of fans

While Glen Huntly Road was closed for the Big Dig, we supplied a footpath buggy for community members who needed some extra help getting around.

We worked with Travellers Aid Australia to help make life easier for people. The footpath buggy and wheelchair service making as many as 60 trips a day, taking people to and from the Glen Huntly Road shops and tram or shuttle bus stops.

The service won a lot of local fans – even local traders would take advantage of the service – with more than 2300 trips made during the works.



Waiting for passengers near Booran Reserve



Excavation of Neerim Road to create a bridge over the railway

Changes to the way you travel

There will be some minor disruptions as we put the finishing touches on the new Glen Huntly Station and complete landscaping and road works across the project area.



Train

Trains are stopping again at Glen Huntly Station. Works on the station will continue into September. Until then, accessible taxi services will be available for passengers who need lift access. Taxis will run from Royal Avenue at Glen Huntly Station to Caulfield and Ormond stations.

Buses replace trains on the Frankston Line between South Yarra and Mordialloc stations from **12.05am Saturday 2 September to last service Sunday 3 September**.

Buses replace trains on the Cranbourne and Pakenham line between Richmond* and Oakleigh stations from **12.05am Saturday 2 September to last service Sunday 3 September**.

**There will be express buses between Burnley and Caulfield/Oakleigh stations. Passengers should catch an Alamein, Belgrave or Lilydale train to Burnley Station to transfer to these services.*



Road and Pedestrian

There will be intermittent lane closures and parking changes. Traffic management will be in place to keep you safe.



Visit the project page

For more information on changes and disruptions in your local area, please visit: bigbuild.vic.gov.au/glen-huntly or scan the QR code



Glen Huntly Road is open for vehicles and pedestrians



Glen Huntly Station now taking passengers

Progress in pictures



We removed the old track, and laid 5km of new track, including 3000 sleepers (the horizontal slats that run down the tracks)



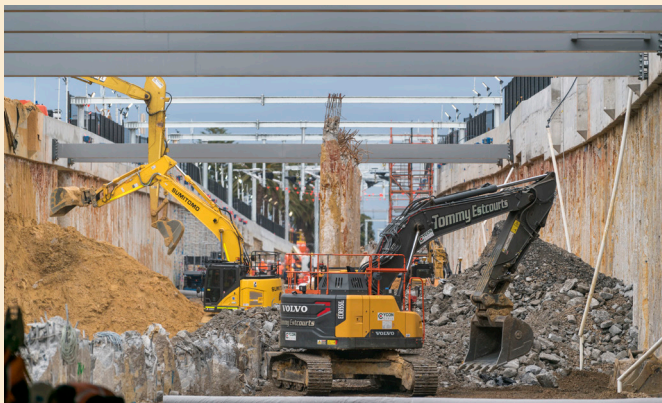
We removed the Glen Huntly tram square: one of only three dangerous tram squares left in Melbourne



We removed the boom gates at Glen Huntly Road (pictured) and Neerim Road



We installed 3,000 piles, which provide structural support to the trench



We excavated the entire 1.2km trench in just 2 months



We poured 30,000 cubic metres of concrete to build the trench for the new rail line, and the new road bridges



We installed 70km of new signal cabling for the train line



In 1937, Glen Huntly was incorrectly written as 'Glenhuntly'. We've built a brand-new station and fixed a very old spelling mistake

Getting around Glen Huntly has never been easier, and there's never been a better time to support your local traders.

Catch the train to Glen Huntly Station, hop aboard a Route 67 tram, jump in the car and park nearby, or simply walk safely across the level crossing-free Glen Huntly Road, and visit the local shops in Glen Huntly Village.



More than 40 years of shoe repairs in Glen Huntly Meet Ara from Ara's Shoe Repairs: 1202 Glen Huntly Road.

"I provide shoe repairs and key cutting. I also offer third-party dry cleaning services. Over the last couple of years, I have increased customers with special orthopaedic needs. When I first started there were another three shoe repairers in Glen Huntly but for the last 25 years, it's been just me.

I opened my first shop, which was across the road from my current shop on Glen Huntly Road, in 1980. This was 6 months after I arrived in Australia from Turkey with my wife and two daughters. I couldn't speak any English at the time. My wife started English classes straight away so she could help me with translating. In my country, I used to be a shoemaker and didn't know much about repairs, but taught myself as the jobs came along.

When we arrived in Melbourne, we lived with my mother-in-law for 6 months in Carnegie. Her and my father-in-law worked as upholsterers at the time. That business was also on Glen Huntly Road and the boss owned the shop next door – he offered it to me with reasonable rent.

I have been working in the same location for over 40 years and have seen lots of change on the street and in the businesses that come and go, but my business and customers have always stayed the same.



Ara has been repairing Glen Huntly shoes since 1980

Cakes, pies and more at BUILDACAKE Meet Jen and Adam from BUILDACAKE bakery: 1219 Glen Huntly Road.

What does BUILDACAKE offer?

"We help you build a cake! You can order custom cakes in any design that you like. We love helping people and making their day really awesome. Making people happy is what we really, really enjoy."

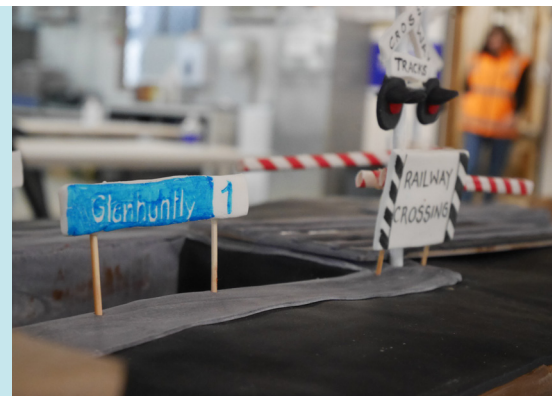
What are you looking forward to with the crossings gone?

"People were getting stuck at the boom gates waiting for trains: You could get stuck for 3 to 4 trains in a row during peak period! This is really

going to change how people get around Melbourne. Without the level crossing it makes life a whole lot easier."

How have you adapted during these works?

"With all the tradies coming into the shop, we've got to know a lot of them. We did three or four late nights a week and started opening at 6 am to do more coffee trade and help people who are changing shifts."



BUILDACAKE recently created a boom gate cake to celebrate the Glen Huntly Road level crossing removal. Scan the QR code to check out the video, or visit [youtube.com/shorts/MCifJsSokU4?feature=share](https://www.youtube.com/shorts/MCifJsSokU4?feature=share)

Glen Huntly Viewing Spot: the hottest venue in town

In June we opened up the Glen Huntly Viewing Spot, offering people an up-close look at the level crossing removal works as they were taking place.

These sessions proved so popular – with the initial sessions booking out before it even opened – we had to host more! Over four weeks, more than 550 people of all ages came along for a bird's-eye view of the Big Dig and to meet the project team.

Big Dig's littlest fan

Toddler Jack has been heading down to the Glen Huntly site to get a look at the works since the Big Dig started in May.

When we opened our Viewing Spot in June, Jack was very excited, even sporting his own little steel cap boots!

Jack and his parents Danielle and Lachlan have been following the project works for almost a year, making new friends with every visit, from crane operators and excavator drivers, to other people in the Glen Huntly community.

"These works are going to change what the whole neighbourhood looks like," said Lachlan.

"It has been exciting to have a first-hand view of the transformation."



Jack with his mum Danielle at the Viewing Spot

Project timeline



Early 2021

- Community consultation



Late 2021 to mid 2022

- Early works



Mid to late 2022

- Major construction begins
- Ongoing community engagement



Mid 2023

- 'Big Dig'
- Boom gates removed from Glen Huntly Road and Neerim Road level crossings
- New tram stop constructed



August 2023

- Trains return to Glen Huntly Station



Late 2023

- Replanting date palms
- Finishing touches to Glen Huntly Station
- Landscaping and planting other new trees



Early 2024

- New pedestrian and cycle path completed
- Neerim Road pocket park opens
- Project completed

* Timeline subject to change.

levelcrossings.vic.gov.au

contact@levelcrossings.vic.gov.au



For languages other than English, please call 9209 0147.

1800 105 105 (call anytime)

Please contact us if you would like this information in an accessible format. If you need assistance due to a hearing or speech impairment, visit relayservice.gov.au

