



Pakenham, December 2023

Level crossing removal community update



That's a wrap for 2023

Thank you for your patience as we get closer to making Pakenham level crossing free

We've made a lot of progress in 2023 as we work towards removing the dangerous and congested level crossings at McGregor Road, Main Street and Racecourse Road in Pakenham and build new stations at Pakenham and East Pakenham.

The year has finished with a major milestone - the team installed the final L-beams that form the two rail bridges. These bridges will carry trains through a level crossing free Pakenham by the end of 2024.

Pakenham Station has gained some coverage with the first panels installed on the canopy on the southern side of the station. East Pakenham is also taking shape with the platform foundations in place, lift shafts installed and car park asphalted.

All three level crossings will be gone for good and the two new modern stations will be open in 2024, making journeys on Melbourne's busiest train line more reliable and providing better connections to public transport and the town centre.

Why these level crossings need to go



63,000 vehicles use these crossings each weekday



Boom gates down for more than **30 minutes** of the morning peak



170 Metro and V/Line trains pass through the level crossings daily



90,000 passengers use the Cranbourne - Pakenham line each day



Sign up for updates
levelcrossings.vic.gov.au



The beam dream team

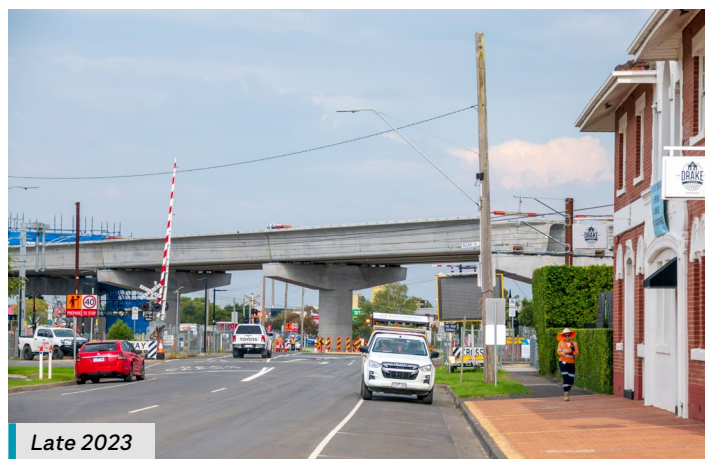
We were busy heavy lifting in 2023 as all 272 L-beams were craned into place to create the 2.5km elevated rail bridge.

The team ticked off major milestones this year, installing beams over McGregor Road and Main Street in April, and Racecourse Road in October.

Each beam was made in Victoria and measures between 25 to 32 metres in length and weighs up to 135 tonnes.

Now the rail bridge is in place, the team will continue installing the

6500 sleepers and 7.8km of new rail track required for the bridge, along with 18,000 tonnes of ballast, sourced from a local quarry.



Pakenham Station, late 2023



Building big in Pakenham

The new Pakenham Station has risen from the ground in 2023. The team began the year piling foundations for station buildings and installing services underground.

A large concrete slab followed, paving the way for the framework of the new premium station, including installation of the lift shafts and stairs that will take passengers up to the platform to catch the train.

On the south side of the station, 14 steel poles - or canopy columns - were also installed. These 15 metre high poles support the structural steel of the station's roof, which includes 14 skylights.

The team has begun to install the first of the 258 panels that will create a bronzed roof inspired by Pakenham's rolling hills and bronze sunsets.



Pakenham Station, early 2023



East Pakenham Station

The team at East Pakenham Station made significant progress this year.

They constructed new train tracks to minimise disruption while works on the new station and underpass got underway. In June, when buses replaced trains, we connected the new tracks to the existing ones near Racecourse Road. This allowed us to start building on the southern side of the new station.

With digging and excavation complete, the team installed six giant concrete beams, known as 'Super T's' to form the underpass and the station platforms. Lift shafts and stairs for platform access were also installed.

Away from the station and underpass, the staff buildings are nearly complete, and the car park is asphalted, ready for commuters in 2024.

Project timeline

-  **2019**
 - Site investigations
 - Technical and engineering assessments
 - Community engagement
-  **Early 2021**
 - Community engagement
 - Further engineering investigations
-  **Mid 2021**
 - Station designs announced
-  **Late 2021**
 - Open space community consultation
 - Early works
-  **2022**
 - Construction
 - Open space designs released
-  **2023**
 - Construction
-  **2024**
 - Boom gates gone for good
 - Pakenham and East Pakenham stations open
 - Community space open

* Timeline subject to change.

What's happening in January?

Work will stop on our sites on Friday 22 December and recommence on Wednesday 10 January.

During January, the project team will be:

- Continuing to install track, sleepers and ballast in the rail bridge from Main Street to Racecourse Road
- Working on the internal areas of the station buildings at Pakenham and East Pakenham
- Focused on Ryan Road upgrade works.

What to expect:

- Construction vehicles and machinery movement
- Increased noise, dust and vibration
- Additional lighting at times
- Traffic management and detour signage
- Works between Monday to Friday 7am to 6pm, and Saturday 7am to 3pm.

Pakenham Road Upgrade's disruptions


- Closure of Healesville-Koo Wee Rup Road between Southeast Boulevard and Princes Freeway, including the freeway inbound exit and entry ramps, between **7pm Wednesday 3 January and 7pm Thursday 25 January 2024.**
- Closure of McGregor Road between the southern roundabout and the Henry Road/Webster Way intersection and the freeway outbound exit ramp, between **7pm Monday 29 January to 5am Monday 4 March.**

levelcrossings.vic.gov.au

contact@levelcrossings.vic.gov.au



For languages other than English, please call 9209 0147.

1800 105 105 (call anytime) 

Please contact us if you would like this information in an accessible format. If you need assistance due to a hearing or speech impairment, visit relayservice.gov.au

