

Melbourne Metro Rail Project

PREPARED FOR METRO TUNNEL PROJECT

MMR-AJM-PWAA-RP-NN-005184
MAIN WORKS (TUNNELS AND STATIONS)
ENVIRONMENTAL AUDIT SUMMARY
REPORT 2024

14 MARCH 2025

REVISION P1

CONFIDENTIAL

OFFICIAL: Sensitive



Document Control Record



222 Exhibition Street
Melbourne VIC 3000
PO Box 23061 Docklands VIC 8012 Australia

DOCUMENT CONTROL

Document Title	Main Works (Tunnels and Stations) Environmental Audit Summary Report 2024				
Document ID	MMR-AJM-PWAA-RP-NN-005184			Contract no.	CMS332569
File Path	https://tucana.ajmjb.com/#/files/MMR/MMRDT/MMRTT/Wip/MMR-AJM-PWAA-RP-NN-005184				
Client	Rail Project Victoria			Client contact	Andrea Myers
Date	Revision details/status	Prepared by	Author	Verifier	Approver
14 March 2025	Issued to LXRP (via RPV)	Victoria Johnston	Alisha Mahendran	Rob Douglas	Ruth Macdonald
Current revision	P1				

APPROVAL

Author Signature	Signed at AJM-JV internal Verification and Approval process	Approver Signature	Signed at AJM-JV internal Verification and Approval process
Name	Alisha Mahendran	Name	Ruth Macdonald

© Copyright 2016 AJM Joint Venture. The concepts, data and information contained in this document are the property of AJM Joint Venture. No part of this document may be reproduced, used, copied, published or adapted for use except in accordance with the provisions of the Copyright Act 1968 or with the consent of AJM Joint Venture.

This document has been prepared on behalf of, and for the exclusive use of Metro Tunnel Project ("MTP") previously known as Rail Projects Victoria ("RPV"), and is subject to, and issued in accordance with, the provisions of the contract between AJM Joint Venture and MTP. AJM Joint Venture makes no representations and undertakes no duty to any third party who may use or rely upon this document, and accepts no liability or responsibility whatsoever for, or in respect of, any use of, or reliance upon, this document by any third party. Any third party using and/or relying upon this document accepts sole responsibility and all risk for using and/or relying on this document for any purpose.

This document has been produced from information sourced from MTP and/or from other sources, relating to the dates and periods referred to in this document. Except as otherwise stated in the document, AJM Joint Venture has not attempted to verify the accuracy or completeness of any such information. If the information is subsequently determined to be false, inaccurate or incomplete then it is possible that our observations and conclusions as expressed in this document may change. The passage of time, manifestation of latent conditions or impacts of future events may require further examination of the project and subsequent data analysis, and re-evaluation of the data, findings, observations and conclusions expressed in this document.

This document should be read in full and no excerpts are to be taken as representative of the findings.

Contents

Glossary	ii
1. Executive Summary	1
2. Introduction	2
2.1 Purpose	2
2.2 Project Background	2
2.3 Scope	4
3. Environmental Management	5
3.1 Environmental Governance Framework	5
3.2 Roles and Responsibilities	8
4. Conduct of Audits	11
4.1 IEA Audit Requirements	11
4.2 IEA Audit Methodology	11
5. Audit Findings	14
5.1 IEA 6-monthly summary report (March 2024)	14
5.2 IEA 6-monthly summary report (October 2024)	15
5.3 Summary of Non-conformances	16
6. Conclusions	17

Glossary

TERM / ABBREVIATION	DESCRIPTION
AQMP	Air Quality Management Plan
AQIA	Air Quality Impact Assessment
AJM JV	Aurecon Jacobs Mott MacDonald Joint Venture
BDP	Business Disruption Plan
BSGC	Business Support Guidelines for Construction
CEMP	Construction Environmental Management Plan
CHMP	Cultural Heritage Management Plan
CNVMP	Construction Noise and Vibration Management Plan
CSEMF	Community and Stakeholder Engagement Management Framework
CSEMP	Community and Stakeholder Engagement Management Plan
CYP	Cross Yarra Partnership
DTP	Department of Transport and Planning
EES	Environment Effects Statement
EMF	Environmental Management Framework
EMS	Environmental Management System
EPRs	Environmental Performance Requirements
HMP	Heritage Management Plan
HCMTs	High Capacity Metro Trains
IEA	Independent Environmental Auditor
ISO 14001:2015	AS/NZS ISO 14001:2015 Environmental management systems — Requirements with guidance for use
MMRA	Melbourne Metro Rail Authority
MTP or Project	Metro Tunnel Project
OEMP	Operational Environmental Management Plan

TERM / ABBREVIATION	DESCRIPTION
PIO	Where in the course of the audit work, an opportunity has been identified to improve a process or procedure.
RIA	Rail Infrastructure Alliance
RIMG	Residential Impact Mitigation Guidelines
RNA	Rail Network Alliance
RPV	Rail Projects Victoria
RSA	Rail Systems Alliance
SEIP	Site Environmental Implementation Plan
SWMP	Surface Water Management Plan
TPZ	Tree Protection Zone
TMP	Traffic Management Plan
UDMP	Urban Design Management Plan
UDS	Urban Design Strategy
VAGO	Victorian Auditor-General's Office
VAGO Early Works Audit Report	Victorian Auditor-General's Office (6 June 2019) <i>Melbourne Metro Tunnel Project – Phase 1: Early Works</i>
VIDA	Victorian Infrastructure Delivery Authority
WMS	Work Method Statement
WSUD	Water Sensitive Urban Design

1. Executive Summary

The Metro Tunnel Project (MTP) is currently under construction and will create a new end-to-end rail line from Sunbury in the west to Cranbourne/Pakenham in the south-east, with high capacity trains and five new underground stations.

The MTP Early Works, included relocation of services and site preparation works prior to major construction commencing have been completed. The Victorian Auditor-General's Office (VAGO) undertook an audit of the Early Works Package and published its report Melbourne Metro Tunnel Project – Phase 1: Early Works on 6 June 2019 (VAGO Early Works Audit Report).

A key recommendation of the VAGO Early Works Audit Report, regarding its assessment of environmental strategies and risk mitigation, was to develop summaries of the Project's Independent Environmental Auditor (IEA) reports and publish such summaries on the MTP official website. This includes the key packages of the Main Works, which include the Tunnels and Stations Package being delivered by Cross Yarra Partnership (CYP).

This report has been developed to meet the VAGO recommendation and to provide the wider public with information of the Project's environmental performance for the Tunnels and Station package. Audits for the Tunnels and Station package are conducted quarterly, with the IEA also providing six-monthly summary audit reports. This report provides a summary of the IEA findings in the six-monthly summary audit reports applicable to the Tunnels and Stations Package.

The Project's Environmental Management Framework (EMF) requires an IEA to undertake environmental audits to assess Delivery Partner compliance with the EMF. The auditing process is designed to lead to continual improvement during projects - this is key to AS/NZS ISO 14001:2015 Environmental management systems — Requirements with guidance for use and best practice environmental management. As such, some Observations and Areas for Improvement were identified.

This report found that CYP addressed the audit findings in a timely manner related to the associated environmental management risk; therefore, audit findings improved CYP's systems and promoted better environmental outcomes. All key audit findings (e.g. areas for improvement) for the reporting period have been addressed by CYP and corrective actions implemented.

The auditing program within the scope of this report identified that, in general, the works were undertaken in accordance with the requirements of the EMF, relevant Environmental Performance Requirements (EPRs) and the MTP Incorporated Document.

2. Introduction

2.1 Purpose

Metro Tunnel Project (MTP), previously known as Rail Projects Victoria (RPV), engaged Aurecon Jacobs Mott MacDonald Joint Venture (AJM JV) to prepare a summary report of the IEA Six-monthly summary reports for the MTP Main Works during the 2024 calendar year produced in March 2024 and October 2024 (this covers the following IEA quarterly audits: November 2023, February 2024, May 2024 and August 2024). This report relates to the Tunnels and Stations Package for the Project and summarises findings from the IEA audits undertaken.

This request follows a recommendation outlined in the VAGO Early Works Audit Report. The VAGO report assessed environmental strategies and risk mitigation and recommended that Department of Transport and Planning (DTP) publish summaries of key findings and recommended actions from past and future IEA reports produced for the MTP on the Project's official website. The purpose of this audit summary report is to meet the above recommendation of the VAGO Early Works Audit Report and provide the wider public with information of MTP's environmental performance during the Main Works Package.

A subsequent VAGO audit (June 2022) on Melbourne Metro Tunnel Phase 2 for Main Works found that MTP and CYP had effective systems in place for monitoring compliance with environmental requirements and methodology to ensure corrective action is taken in a timely manner. The IEA notified VAGO that CYP has maintained high standards for environmental management and no Non-conformances have been raised since February 2020. The audit also found that CYP had resolved most quarterly audit findings by the next audit.

2.2 Project Background

2.2.1 THE METRO TUNNEL PROJECT

The Victorian Government is building the MTP to connect the Sunbury line to the Cranbourne and Pakenham lines through the construction of new twin nine-kilometre rail tunnels and five new underground stations. MTP is transforming Melbourne's rail network into an international-style metro system, boosting the capacity of the rail network to keep pace with Melbourne's growing population and rail patronage.

MTP will provide the foundation for expanding Melbourne's public transport network, helping to ensure Melbourne remains one of the world's most liveable cities now and into the future. MTP will also stimulate significant urban renewal, creating opportunities for new housing, commercial development and jobs in and around the CBD, whilst improving train travel to and from the suburbs.

The infrastructure required for construction of MTP includes:

- Twin nine-kilometre rail tunnels from Kensington to South Yarra, connecting the Sunbury and Cranbourne/Pakenham railway lines through the CBD.
- Rail tunnel portals (entrances/exits) at Kensington and South Yarra.
- New underground stations at Arden, Parkville (under Grattan Street), State Library (at the northern end of Swanston Street), Town Hall (at the southern end of Swanston Street), and Anzac (under the Domain interchange on St Kilda Road). State Library and Town Hall stations will feature direct interchange with the existing Melbourne Central and Flinders Street Stations respectively.
- Train/tram interchange between Anzac Station and the Domain Interchange.
- High-Capacity Signalling to maximise the efficiency of the new fleet of High-Capacity Metro Trains (HCMTs) that will run along the Sunbury, Cranbourne/Pakenham lines and the Metro Tunnel in the future.

Some project elements' nomenclature (e.g. station names) have changed during the delivery of the Project and audit findings may reflect superseded nomenclature, with the updated name provided in brackets.

2.2.2 MTP WORK PACKAGES

MTP is being managed on behalf of the Victorian Government by MTP, formerly known as the Melbourne Metro Rail Authority. MTP forms part of the Victorian Infrastructure Delivery Authority (VIDA) (formerly known as the Major Transport Infrastructure Authority), which is responsible for facilitating the development and delivery of the biggest transport infrastructure program in Victorian history. Figure 2-1 shows a broad schematic plan for the principal components of MTP.

Construction of MTP is being delivered by MTP on behalf of the Victorian Government in partnerships with contracted Delivery Partners; through four separate works packages with different delivery partner(s) for each works package described in Table 2.1. This report relates only to the Main Works: Tunnels and Stations Package.

TABLE 2-1 MTP WORKS PACKAGES

PACKAGE	DESCRIPTION
Early Works	The Early Works Package including three sub-packages of works, each delivered by a Managing Contractor, Yarra Trams and Utility Service Providers respectively.
Main Works	<p>The Tunnels and Stations Works Package, being delivered by Cross Yarra Partnership (CYP).</p> <p>The Rail Infrastructure Works Package associated with the Eastern and Western Tunnel Entrances and the western turnback, was being delivered by the Rail Infrastructure Alliance (RIA). The Rail Systems and Rail Infrastructure Works Package for High Capacity Signalling, rail systems integration and commissioning, was being delivered by the Rail Systems Alliance (RSA).</p> <p>In 2022, RIA and RSA integrated to form a consolidated alliance known as the 'Rail Network Alliance' (RNA), to deliver the remaining infrastructure and systems works Metro Tunnel need for operation. The Rail Network Alliance comprises John Holland, CPB Contractors, AECOM, Alstom, MTP and Metro Trains. Audit summary reports for subsequent reports will be combined for RNA.</p>

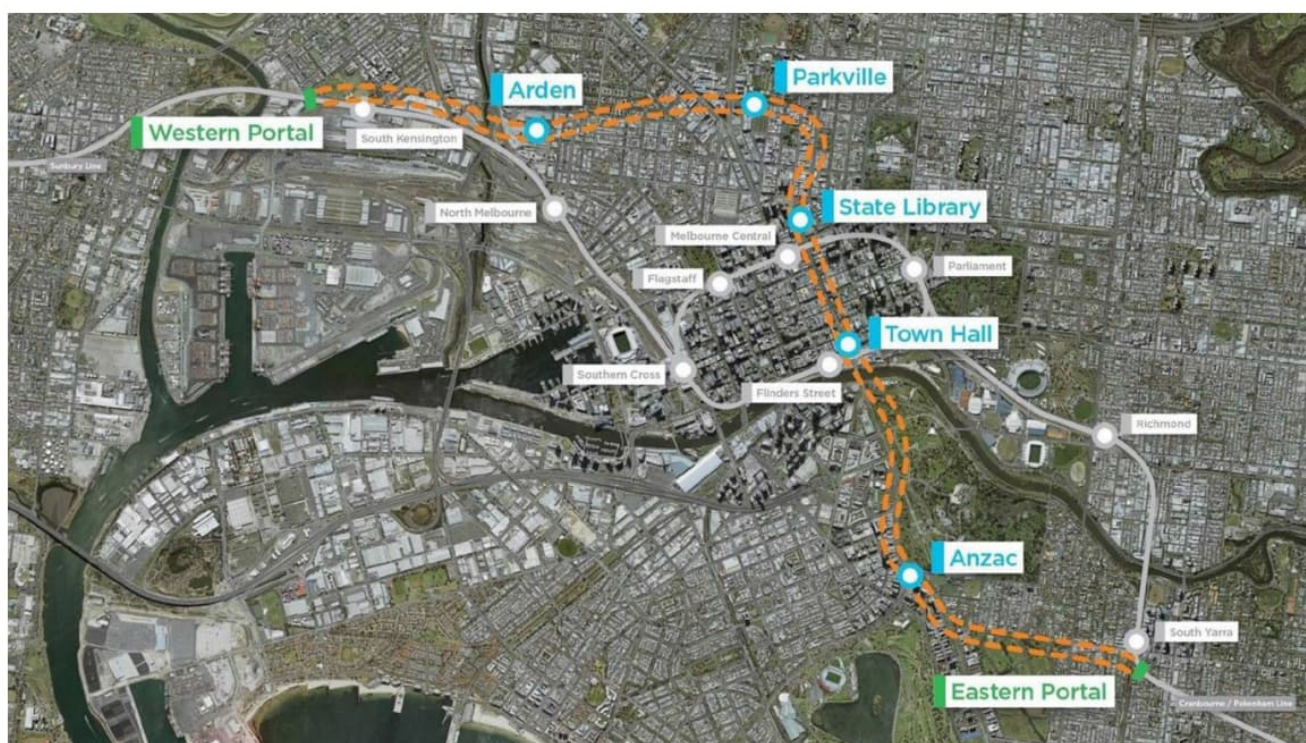


FIGURE 2-1 MTP SCHEMATIC PLAN

2.3 Scope

This report summarises environmental audits conducted as part of the MTP Main Works being delivered by CYP for the Tunnels and Stations Works Package. This report summarises the IEA Six-Monthly Audit Reports from March 2024 and October 2024 highlighted in Table 2.2. It covers all works conducted under the GC82 Melbourne Metro Rail Project Incorporated Document (May 2018) for the Tunnels and Stations Works Package of the MTP and the associated Melbourne Metro EMF.

Subsequent summary audit reporting will be completed on an annual basis.

TABLE 2-2 IEA AUDIT REPORTS IN SCOPE

PACKAGE	SCOPE	RELEVANT IEA REPORTS IN SCOPE
GC82 Tunnels and Stations (CYP)	Publish key findings for IEA Six-Monthly reports.	Helman Environmental Six-Monthly Summary Environmental Audit Reports: March 2024 and October 2024 (these cover the following IEA quarterly audits: November 2023, March 2024, May 2024 and August 2024).

The following Packages are excluded from this report and will be covered in separate reports:

- Main Works carried out from 2018 to August 2023, addressed in separated IEA summary reports which have been completed and have been published on MTPs website.
- Works carried out by Rail Network Alliance (RNA); who were previously known as Rail Infrastructure Alliance and Rail Systems Alliance (reports published separately).

3. Environmental Management

3.1 Environmental Governance Framework

An Environment Effects Statement (EES) was prepared for the MTP and, following the statutory EES process, an MTP Incorporated Document was approved by the Minister for Planning, containing compliance obligations which must be achieved by the Delivery Partners. Each Delivery Partner is required to:

- Comply with the requirements of the MTP Incorporated Document under the Planning Scheme Amendment (GC82), published in the Government Gazette on 26 June 2018.
- Comply with the EMF, approved by the Minister for Planning and published on the MTP website. Among other things, the EMF includes the EPRs, the Residential Impact Mitigation Guidelines (RIMG) and the Business Support Guidelines for Construction (BSGC).
- Comply with the EPRs, which include a requirement to prepare plans to document the approach to compliance (noting that CYP will have different plans to the other Delivery Partners).
- Develop, implement and maintain a project-specific Environmental Management System (EMS), Construction Environmental Management Plan (CEMP) and Site Environmental Implementation Plans (SEIPs) for the design and construction phases, where applicable.
- Comply with the MTP EMS.
- Develop a Community and Stakeholder Engagement Management Plan (CSEMP) consistent with the MTP CSEMP.

The governance framework and relevant roles and responsibilities for MTP are set out in the EMF and are included in Section 3 of this report. The governance framework for MTP is presented in Figure 3-1.

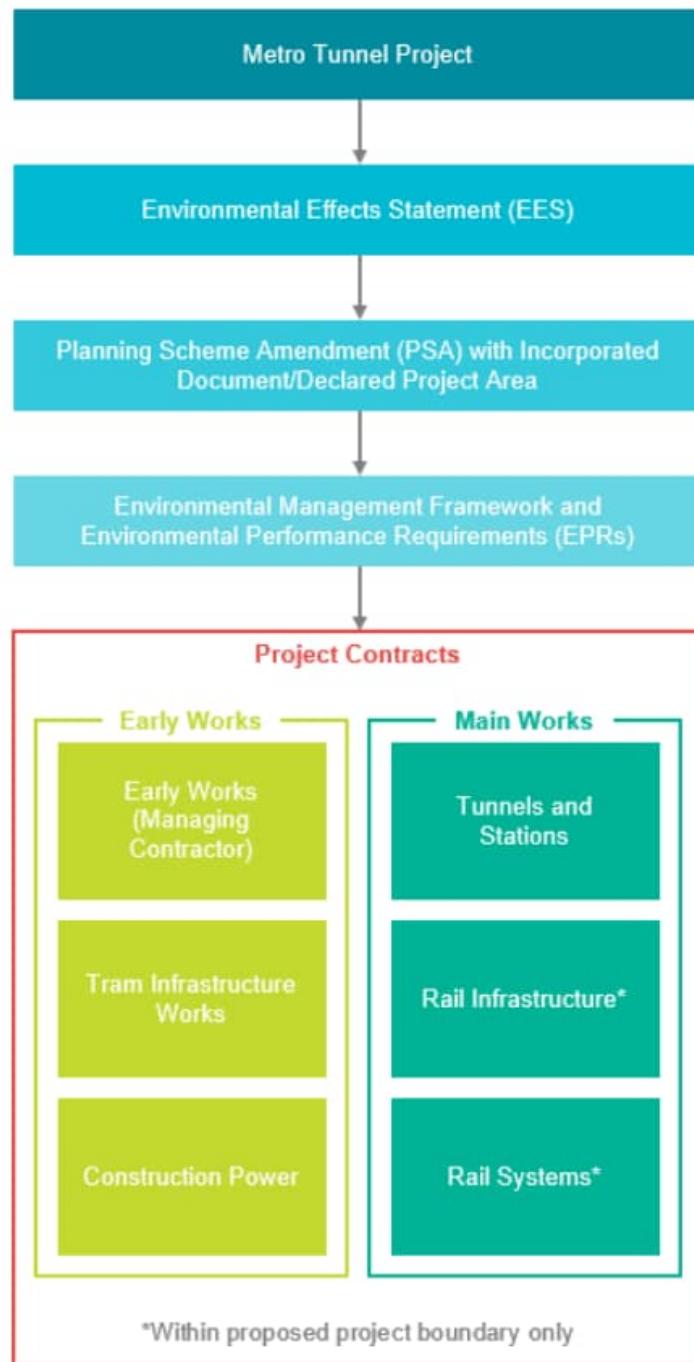


FIGURE 3-1 GOVERNANCE FRAMEWORK

3.1.1 ENVIRONMENTAL MANAGEMENT FRAMEWORK

The MTP Incorporated Document describes the requirements of the EMF. The main elements of the EMF for the design and construction phase are:

- Applicable legislative requirements and approvals.
- EPRs, which address matters set out in the MTP Incorporated Document and identified through the EES.
- The RIMG and the BSGC.
- A CEMP, together with subordinate document including SEIPs, EMS and other plans identified in the MTP Incorporated Document and EMF.

The EMF documentation is summarised in Figure 3-2.

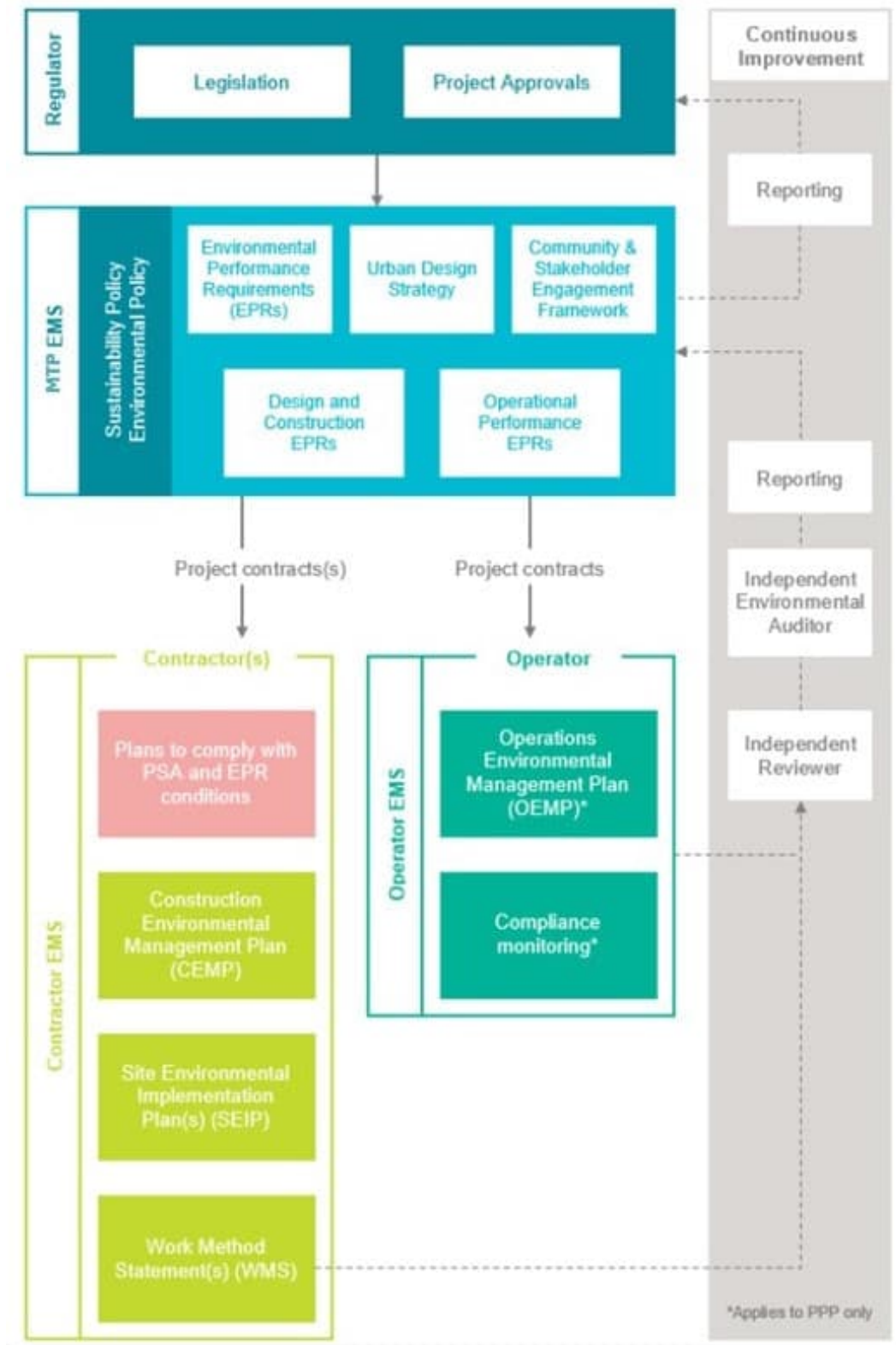


FIGURE 3-2 ENVIRONMENTAL MANAGEMENT FRAMEWORK

The EMF requires that the Delivery Partners develop and implement an EMS certified to ISO 14001:2015 and consistent with relevant legislation, policy and guidelines and MTP's Environmental Policy.

The EMF provides the governance framework to manage environmental aspects identified through the EES process, including the Minister for Planning's assessment, for the design, construction and operational phases of the MTP.

3.1.2 ENVIRONMENTAL PERFORMANCE REQUIREMENTS

EPRs have been developed through the EES and associated consultation processes, and to reflect the Minister for Planning's assessment of the EES and the requirements of the MTP Incorporated Document.

MTP is required to be delivered in accordance with approved EPRs that define the project-wide environmental outcomes that must be achieved during design, construction and operation of MTP. This performance-based approach allows for a delivery model with sufficient flexibility to encourage innovation by the private sector to determine how any recommended EPRs would be achieved.

The EES presented a risk-based assessment of environmental effects of the MTP, in accordance with the EES Scoping Requirements. Potential mitigation measures were typically included in the EES as examples of how an environmental effect could be mitigated and to illustrate how an EPR could be implemented. However, the EES generally did not mandate or commit to a particular mitigation or management outcome. In the same manner, the EPRs do not typically mandate or require a particular mitigation or management solution. Instead, the EPRs are implemented by applying an assessment of the nature and extent of the relevant environmental effects, and the most practicable means of mitigating and managing those effects. This method is used so that the management and mitigation measures implemented are proportional to the effect they are designed to address and achieve the outcome prescribed by the EPR.

The MTP Incorporated Document requires that the MTP is constructed and operated in accordance with the EPRs approved by the Minister for Planning. Each Delivery Partner is to comply with the EPRs and prepare necessary plans prior to commencement of their scope of work to document the approach to compliance with each EPR.

3.1.3 ASSOCIATED MANAGEMENT PLANS

MTP together with the Delivery Partners (as relevant) prepared plans to comply with the approval requirements in the MTP Incorporated Document. MTP and the Delivery Partners developed and implemented these management plans and programs in accordance with the processes detailed in the EMF.

3.2 Roles and Responsibilities

3.2.1 METRO TUNNEL PROJECT

MTP, on behalf of the Victorian Government, is responsible for delivering MTP in line with the requirements and objectives of DTP and the Victorian Government. MTP forms part of the VIDA (formerly known as the Major Transport Infrastructure Authority), which is responsible for facilitating the development and delivery of the biggest transport infrastructure program in Victorian history.

The key roles and responsibilities of MTP are set out in the EMF and include:

- Obtain applicable principal statutory approvals including the Planning Scheme Amendment (PSA), Cultural Heritage Management Plan (CHMP) and some heritage permits, where it is more appropriate for MTP to seek these consents.
- Establish the EMF, including the RIMG and the BSGC for approval by the Minister for Planning as required by the MTP Incorporated Document.
- Establish the Urban Design Strategy (UDS) and the CSEMF for approval by the Minister for Planning, as required by the MTP Incorporated Document and EPRs.
- Develop and implement the MTP EMS, in accordance with ISO 14001:2015.
- Monitor compliance with the EPRs across all Project Contracts and comply with the EPRs applicable to MTP.
- Together with each Delivery Partner for each of the Project Contracts, develop and submit the requisite plans to comply with the MTP Incorporated Document and the EMF.

- Review and approve contract documentation for each Project Contract in accordance with the EMF, including the CEMPs, SEIPs, Transport Management Plans, BDPs and Construction Noise and Vibration Management Plans (CNVMP) as required by the MTP Incorporated Document.
- Review the CSEMP for each Project Contract.
- Prior to commencement of work, verify that the Delivery Partner has complied with the relevant EPRs.
- Review the Delivery Partner performance against the approved EPRs and take corrective action as necessary.

3.2.2 DELIVERY PARTNERS

Construction of MTP is being delivered by MTP on behalf of the Victorian Government in partnerships with contracted Delivery Partners. The key roles and responsibilities of each Delivery Partner for the MTP are set out in the EMF and the contractual obligations and include:

- Comply with the EMF (including the EPRs, RIMG, BSGC and CSEMF), legislative and approval requirements.
- Obtain any additional permits from regulatory authorities (other than the approvals that would be obtained by or jointly with MTP).
- Develop and implement a project specific EMS or apply their existing EMS to the specific activities for the MTP, that is certified to ISO 14001:2015.
- Prepare a CEMP, SEIPs and associated work method statements (WMS), and other plans required by the MTP Incorporated Document, EPRs or Project Contracts.
- Develop a CSEMP consistent with MTP's CSEMF approved by the Minister for Planning in accordance with EPR SC3.
- Provide adequate resources to establish, implement, maintain and improve the CEMP, SEIPs and the EMS.
- Implement and maintain compliance with the EPRs.
- Undertake environmental audits to confirm compliance with the EMF, EPRs and plans required by the MTP Incorporated Document.
- Prior to commencement of work, ensure that all sub-contractors have complied with the relevant EPRs, CEMP and plans required to comply with the EPRs and MTP Incorporated Document, where relevant.
- Review of sub-contractor's performance against the EPRs and CEMP and take corrective action as necessary.
- Appoint an IEA.

3.2.3 INDEPENDENT ENVIRONMENTAL AUDITOR

The EMF requires CYP to appoint an IEA to undertake environmental audits of compliance with the approved CEMP and other compliance documents.

The IEA audits compliance with the EPRs and MTP Incorporated Document prior to implementation, as well as during project activities, to verify compliance with the EMF, EPRs, environmental management plans and approval requirements. This also includes investigations into trends in complaints, by topic or on a random basis.

The key roles and responsibilities of the IEA during the Main Works Packages, as specified in the EMF, are:

- Prior to commencement of work, verify that the Delivery Partner has complied with the relevant EPRs, the EMF and the MTP Incorporated Document.
- Conduct audits of the Delivery Partner's work to assess compliance with the CEMP, EMF, EPRs and plans required by the EPRs and MTP Incorporated Document.

- Prepare audit reports containing the results of audits.
- Review complaints which may highlight trends or Non-conformance with applicable EPRs.

4. Conduct of Audits

4.1 IEA Audit Requirements

Audits of each Delivery Partner's CEMP, sub-plans and SEIPs were required prior to works commencing to Confirm compliance with ISO 14001:2015, the EMF, relevant EPRs and MTP Incorporated Document.

Site audits were scheduled on a quarterly basis through the delivery of the Main Works Package and considered:

- The timing of works.
- The nature of the works including consideration of the level of associated risk.
- Incident investigation outcomes.
- Complaints received, particularly if related to EPRs and indicate instances of non-conformances.
- Previous audit outcomes.
- Management review outcomes.
- Upon the completion of each audit, an audit report detailing all the findings was submitted to MTP.

4.2 IEA Audit Methodology

4.2.1 AUDIT OVERVIEW

The MTP Main Works (Tunnels and Stations) Auditing Programme by the IEA is defined in the EMF to:

- Conduct audits of the Delivery Partner works to assess compliance with the CEMP, Operational Environmental Management Plan (for Tunnels and Stations operational phase only), EMF, EPRs and plans required by the EPRs and MTP Incorporated Document.
- Prepare a six-monthly report summarising the Delivery Partner's compliance with the EMF and provide to MTP and the Delivery Partner.
- Prepare audit reports containing the results of audits.

Accordingly, the objective for these audits is to assess the conformance of the Project works with project compliance obligations.

4.2.2 AUDIT PROGRAM

Audits of the Delivery Partner's CEMP, sub-plans and SEIPs involved a review of each document to assess compliance with ISO 14001:2015, the EMF, relevant EPRs and MTP Incorporated Document.

During site inspections, compliance is assessed through observation of project activities, interviews and review of relevant environmental records. An audit program is prepared each year during a workshop attended by CYP, MTP and the IEA, Helman Environmental. Each quarterly audit scope is based on project status and the environmental aspects considered to be significant for the relevant works. Audit scopes are reviewed prior to each audit to confirm relevance relative to the stage of the project works. Audits typically evaluated:

- Conformance with CYP EMS requirements.
- Conformance with CYP CEMP requirements, management plans and any CEMP sub-plans.
- Compliance with Project EMF and EPRs.
- Compliance with the MTP Incorporated Document.

- Responses to Non-conformances, incidents and complaints received.
- Effective implementation of monitoring programs.

4.2.2.1 Documentation

As part of the Tunnels and Stations Main Works program, CYP has produced environmental management documentation. The IEA has an audit program that routinely audits this documentation against the EPR requirements; these include (but are not limited to):

- Construction Environmental Management Plan and associated sub plans
- Site Environmental Implementation Plans
- Air Quality Dust and Light Management Plan
- Ecology Management Plan
- Heritage Management Plan
- Surface Water Management Plan
- Spoil Management Plan
- Land Use Management Plan
- Electromagnetic Compatibility Management Plan
- Ground Movement Plan
- Ground Movement Instrumentation & Monitoring Plan
- Groundwater Management Plan
- Monitoring Management Plan
- Environmental Monitoring Management Plan
- Noise & Vibration Management Plan
- Construction Noise & Vibration Management Plan
- Health and Safety Plan
- Emergency Response and Incident Management Plan
- EMS Manual
- Others as required.

4.2.2.2 Works

The Tunnels and Stations Main Works are being undertaken in seven construction precincts:

- Western Portal (Western Tunnel Entrance)
- Arden Station
- Parkville Station
- State Library Station
- Town Hall Station
- Anzac Station
- Eastern Portal (Eastern Tunnel Entrance).

The Main Works for the Tunnels and Stations includes:

- Piling
- Excavation
- Services works
- Traffic management
- Tunnelling
- Station construction
- Station fit out.

4.2.3 COMPLAINTS

Complaints are addressed during the IEA Audits through the implementation of the CEMP audit Checklist. This includes verification that environmental-related complaints from community members or other stakeholders are managed in accordance with the processes outlined in the CEMP and Stakeholder and Communications Engagement Management Plan.

Findings against this process may result in Non-conformance if complaints are not being appropriately managed. Where there are no specific IEA findings under the CEMP, complaints are being managed in accordance with the relevant plans.

4.2.4 AUDIT CLASSIFICATIONS

Helman Environmental audit finding classifications are provided in Table 4.1. CYP is required to develop action plans with a timeframe to address effective close out of all audit findings. These audit findings are required to be closed out by the Delivery Partner in a timely manner relative to the associated environmental management risk.

TABLE 4-1 HELMAN ENVIRONMENTAL AUDIT FINDING CLASSIFICATIONS

FINDING	DESCRIPTION
Conformance (C)	There is sufficient evidence to confirm that actions have been undertaken, prepared and/or implemented in full conformance with the requirements of the auditable element.
Non-conformance (NC)	An event that has not fulfilled a requirement specified in the EMS, CEMP, Sub Plans and Management Plans, EPRs, SEIPs, legislation and permit conditions. A situation which would, based on available objective evidence, raise significant doubt as to the effectiveness of environmental management.
Area for improvement (AFI)	A deficiency in the implementation of the EMS, CEMP or subordinate documentation judged to be a risk to the environment, or to environmental management, without constituting an overall failure in the area concerned.
Observation (O)	An audit finding which may relate to an incidental or isolated system discrepancy, which does not compromise the effectiveness of environmental management, or constitute an actual or potential environmental risk.
Undetermined	There is insufficient evidence to make a judgement on compliance.
Not Applicable (N/A)	The auditable element falls outside the scope of the audit, e.g. work relevant to the element being audited has not yet commenced.

5. Audit Findings

This section presents a summary of the six-monthly audit reports within the reporting period (6-monthly summary reports completed in March 2024 to October 2024), including a summary of the findings raised in each period.

5.1 IEA 6-monthly summary report (March 2024)

5.1.1 FINDINGS

During the March 2024 six-monthly reporting period, there were two IEA quarterly audits in November 2023 and February 2024. During the reporting period, 48 of the 125 EPRs (38%) across 12 of the 19 EPR categories were audited. Certain EPRs were not covered in the audit schedule as these were not applicable to the design and construction works ongoing during the reporting period. The EPRs vary in the detail of their requirements, and each EPR category has a different number of EPRs. The amount of EPRs audited is not directly reflective of the relative weight of environmental management requirements.

In this period, a total of 11 audit findings were raised (as shown in Table 5.1). During the reporting period, 14 audit findings were closed, some of which were raised in the previous reporting period. 5 findings remained open at the end of the reporting period. 4 of these findings were closed out in the May 2024 audit while 1 of these findings was closed out in the August 2024 audit.

No Non-conformances were raised during the reporting period, which is summarised in Section 5.3.

TABLE 5-1 SUMMARY OF AUDIT FINDINGS (MAR 2024)

FINDING TYPE	OPEN AT START OF 6-MONTH PERIOD	RAISED DURING 6-MONTH PERIOD	CLOSED DURING 6-MONTH PERIOD	OPEN AT END OF 6-MONTH PERIOD
Non-conformance	0	0	0	0
Area for Improvement	2	5	6	1
Observation	6	6	8	4
Total	8	11	14	5

5.1.2 REPORT OUTCOME

The IEA assessed CYPs performance, including environmental management documentation against the audit scope and the objectives outlined in Section 4, and criteria that were applicable to the specific audits completed during the reporting period. Against the key audit objectives, the March 2024 IEA summary report determined:

- The MTP Incorporated Document defines the requirements for the EMF for the Project. It further requires the preparation and implementation of Development Plans for each of the Stations and Portals, and an Early Works Plan. An Urban Design Strategy approved by the Minister is also required. The IEA has reviewed the required Plans separately from the audits. Each of the required Plans includes responses to the EPRs. Conformance with the EPRs is being audited through a rolling 12-month EPR audit program and the EPRs in the scope of the audits conducted during the reporting period are included in the IEA summary report.
- The EPRs audited were largely met. No new findings were raised against the requirements of the EPRs. The 2 open EPR-related findings were closed.
- The CYP EMS documentation has been integrated into the CEMP documentation and is consequently audited as part of the CEMP audit.

- The CEMP provides a suitable framework for environmental management for the Project. Environmental management processes were satisfactory this reporting period. No new findings were raised against the requirements of the CEMP, and 1 open finding was closed.
- The requirements of the SEIPs were largely met, with the audit findings noted in this report considered generally minor. However, some deficiencies were noted in some site environmental controls. 9 new findings were raised during the reporting period, 9 findings were closed and 4 remained open. 3 of these findings were closed out in the May 2024 audit, while 1 was closed out in the August 2024 audit.
- The EMF requires the development and implementation of specific Management Plans. The audits found that there was general conformance with the requirements of those specific Plans which were relevant during the reporting period. On-ground environmental management appeared to be largely robust and most of the requirements of the environmental management plans were being implemented. 2 minor findings were raised. 3 findings were closed during the reporting period, and 1 finding remained open. The 1 remaining finding was closed out in the August 2024 audit.

5.2 IEA 6-monthly summary report (October 2024)

5.2.1 FINDINGS

During the October 2024 six-monthly reporting period, there were two IEA quarterly audits in May 2024 and August 2024. During the reporting period, 51 of the 125 EPRs (41%) across 13 of the 19 EPR categories were audited. Certain EPRs were not covered in the audit schedule as these were not applicable to the design and construction works ongoing during the reporting period. The EPRs vary in the detail of their requirements, and each EPR category has a different number of EPRs. The amount of EPRs audited is not directly reflective of the relative weight of environmental management requirements.

In this period, a total of 6 audit findings were raised (as shown in Table 5.2). During the reporting period, 6 audit findings were closed, some of which were raised in the previous reporting period. 5 findings remained open at the end of the reporting period.

No Non-conformances were raised during the reporting period, which is summarised in Section 5.3.

TABLE 5-2 SUMMARY OF AUDIT FINDINGS (OCT 2024)

FINDING TYPE	OPEN AT START OF 6-MONTH PERIOD	RAISED DURING 6-MONTH PERIOD	CLOSED DURING 6-MONTH PERIOD	OPEN AT END OF 6-MONTH PERIOD
Non-conformance	0	0	0	0
Area for Improvement	1	1	1	1
Observation	4	5	5	4
Total	5	6	6	5

5.2.2 REPORT OUTCOME

The IEA assessed CYP's performance, including environmental management documentation against the audit scope and the objectives outlined in Section 4, and criteria that were applicable to the specific audits completed during the reporting period. Against the key audit objectives, the October 2024 IEA summary report determined:

- The MTP Incorporated Document defines the requirements for the EMF for the Project. It further requires the preparation and implementation of Development Plans for each of the Stations and Portals, and an Early Works Plan. An Urban Design Strategy approved by the Minister is also required. The IEA has reviewed the required Plans separately from the audits. Each of the required Plans includes responses to the EPRs. Conformance with the EPRs is being audited through a rolling 12-month EPR audit program and

the EPRs in the scope of the audits conducted during the reporting period are included in the IEA summary report.

- The EPRs audited were met. No new findings were raised against the requirements of the EPRs. There were no open EPR-related findings.
- The CYP EMS documentation has been integrated into the CEMP documentation and is consequently audited as part of the CEMP audit.
- The CEMP provides a suitable framework for environmental management for the Project. Environmental management processes were satisfactory this reporting period. 1 minor finding was raised against the requirements of the CEMP, and there were no open findings.
- The requirements of the SEIPs were largely met, with the audit findings noted in this report considered generally minor, but with some deficiencies noted in some site environmental controls. 4 new findings were raised during the reporting period, 5 findings were closed and 3 remain open.
- The EMF requires the development and implementation of specific Management Plans. The audits found that there was general conformance with the requirements of those specified Plans which were relevant during the reporting period. On-ground environmental management appeared to be largely robust and most of the requirements of the environmental management plans were being implemented. 1 minor finding was raised. 1 minor finding was closed during the reporting period, and 1 finding remained open.

5.3 Summary of Non-conformances

During the reporting period, no Non-conformances were raised by the IEA.

5.3.1 GENERAL

No general Non-conformances were raised during the reporting period.

5.3.2 ENVIRONMENTAL PERFORMANCE REQUIREMENTS

No EPR specific Non-conformances were raised during the reporting period.

6. Conclusions

This report summarises the IEA 6-monthly summary reports for the MTP Main Works for the Tunnels and Stations Works Package during the 2024 calendar year, which were produced in March 2024 and October 2024. It was prepared in response to a recommendation in the VAGO Early Works Audit Report in 2019. The VAGO report assessed the environmental strategies and risk mitigation and recommended that the DTP publish summaries of key findings and recommended actions from past and future IEA reports.

The purpose of this report is to meet the above recommendation of the VAGO Early Works Audit Report and provide the wider public with information on MTP's environmental performance during the Main Works Package. The Tunnels and Stations Package is a highly complex package of works with a diverse and intricate construction program, with works occurring in a highly urbanised environment with a number of constraints. The auditing process is designed to lead to continual improvement during projects - this is key to implementing best practice ISO 14001:2015 environmental management systems.

An audit program is prepared each year during a workshop attended by CYP, MTP and the IEA, Helman Environmental. Each quarterly audit scope is based on project status and the environmental aspects considered significant for the relevant works. Audit scopes are reviewed prior to each audit to confirm relevance relative to the stage of the project works. The Delivery Partner, CYP, is required to develop action plans with a timeframe to address effective close out of all audit findings.

Table 6.1 provides a summary of audit findings raised during the audit period. These audit findings are required to be closed out by the Delivery Partner in a timely manner relative to the associated environmental management risk.

TABLE 6-1 RAISED IEA FINDING DURING REPORTING PERIOD

FINDING TYPE	NOV 23	FEB 24	MAY 24	AUG 24	TOTAL RAISED FINDINGS
Non-conformance	0	0	0	0	0
Area for Improvement	5	0	0	1	6
Observation	2	4	3	2	11

In the audit periods covered by this report, CYP closed out the audit findings in a timely manner related to the associated environmental management risk; therefore, audit findings improved CYP's systems and promoted better environmental outcomes.

At the time of writing, no 'Non-conformance' findings were raised. The auditing programme identified that, in general, the construction of the Tunnels and Stations Package was undertaken in accordance with the requirements of EMF, relevant EPRs and MTP Incorporated Document.

In the audit period, there is a general trend away from significant findings that may result in material environmental harm (i.e. Non-conformance and areas for improvement), which highlights the project's overall improvements in compliance and the commitment to the continuous improvement principle.

Further summaries of key findings and recommended actions from future IEA reports produced for the remaining work packages of the MTP will be prepared and published on the Project's official website.

