

State Library Station and Town Hall Station Community Reference Group

Monday 5 May 2025

Presentation by Cross Yarra Partnership (CYP)



OFFICIAL: Sensitive

Agenda

Monday 10 February 2025



Item	Topic	Presenter
1	Welcome and introductions	Chris Lovell
2	State Library Station update	Chris Lovell
3	Town Hall Station update	CYP
4	Creative program update	CYP
6	Minutes and actions	CYP
7	Project wide update	CYP
8	General feedback and items for future discussion	All
9	Meeting close	Chris Lovell

OFFICIAL: Sensitive



Welcome and introductions

Presenter: Chris Lovell

OFFICIAL: Sensitive



State Library Station update

Presenter: Rebecca Smith

OFFICIAL: Sensitive

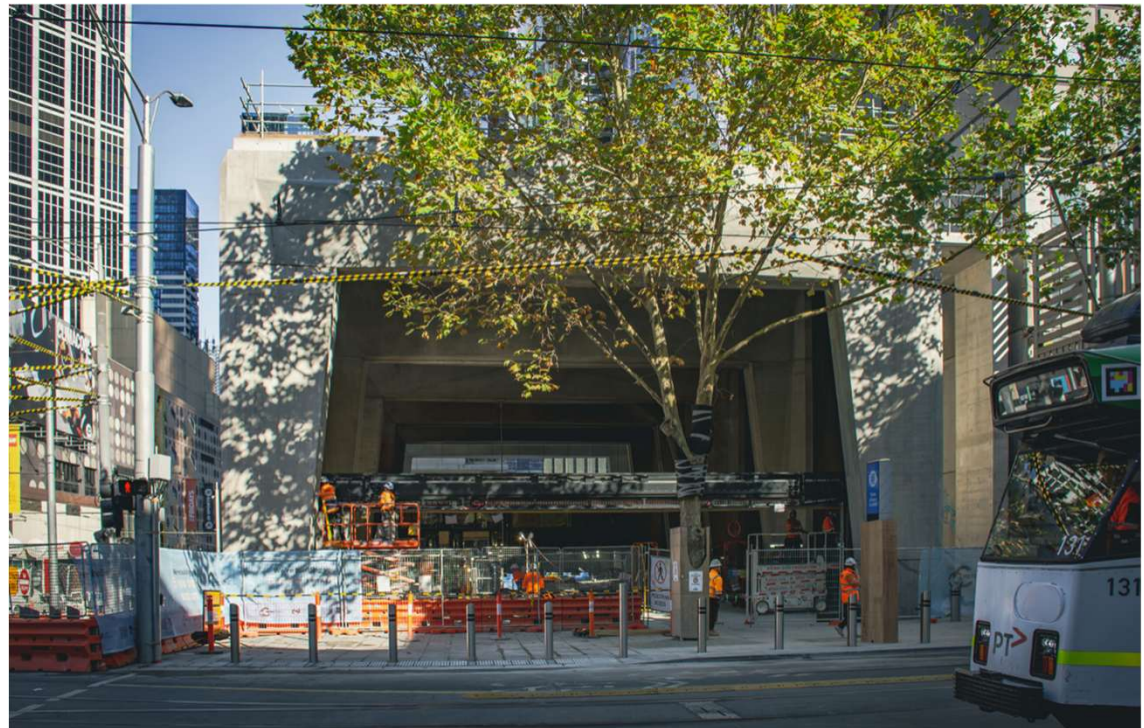


State Library Station

La Trobe Street – station fit out works



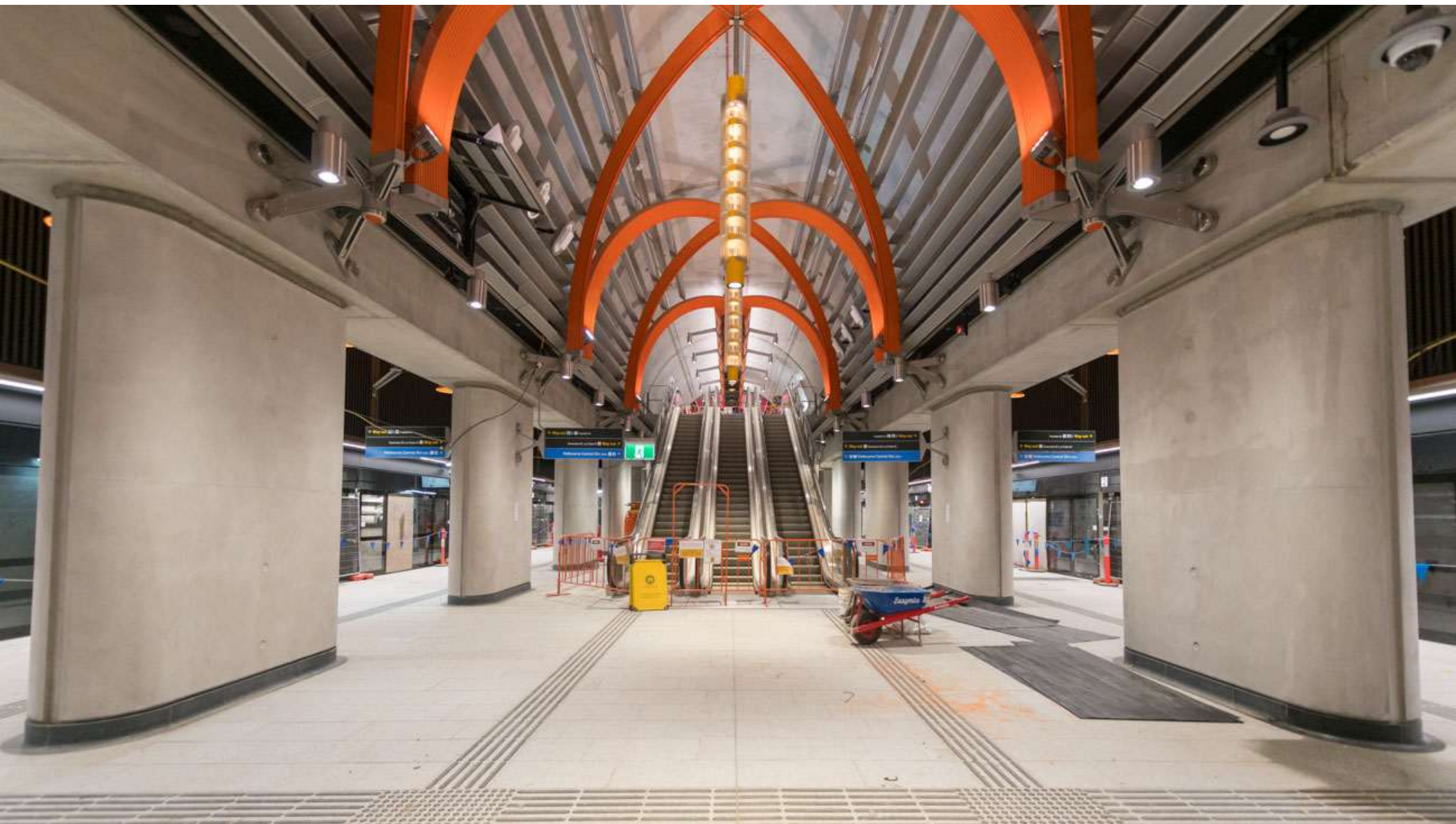
- All areas required for over station development handover have been completed
- Remaining lifts in foyer have been completed
- Fit out works within the foyer and the station are ongoing
- Roller door was installed in mid-February
- Commissioning and testing continues through out the station
- Testing and readiness for day-one operations.



OFFICIAL: Sensitive







State Library Station

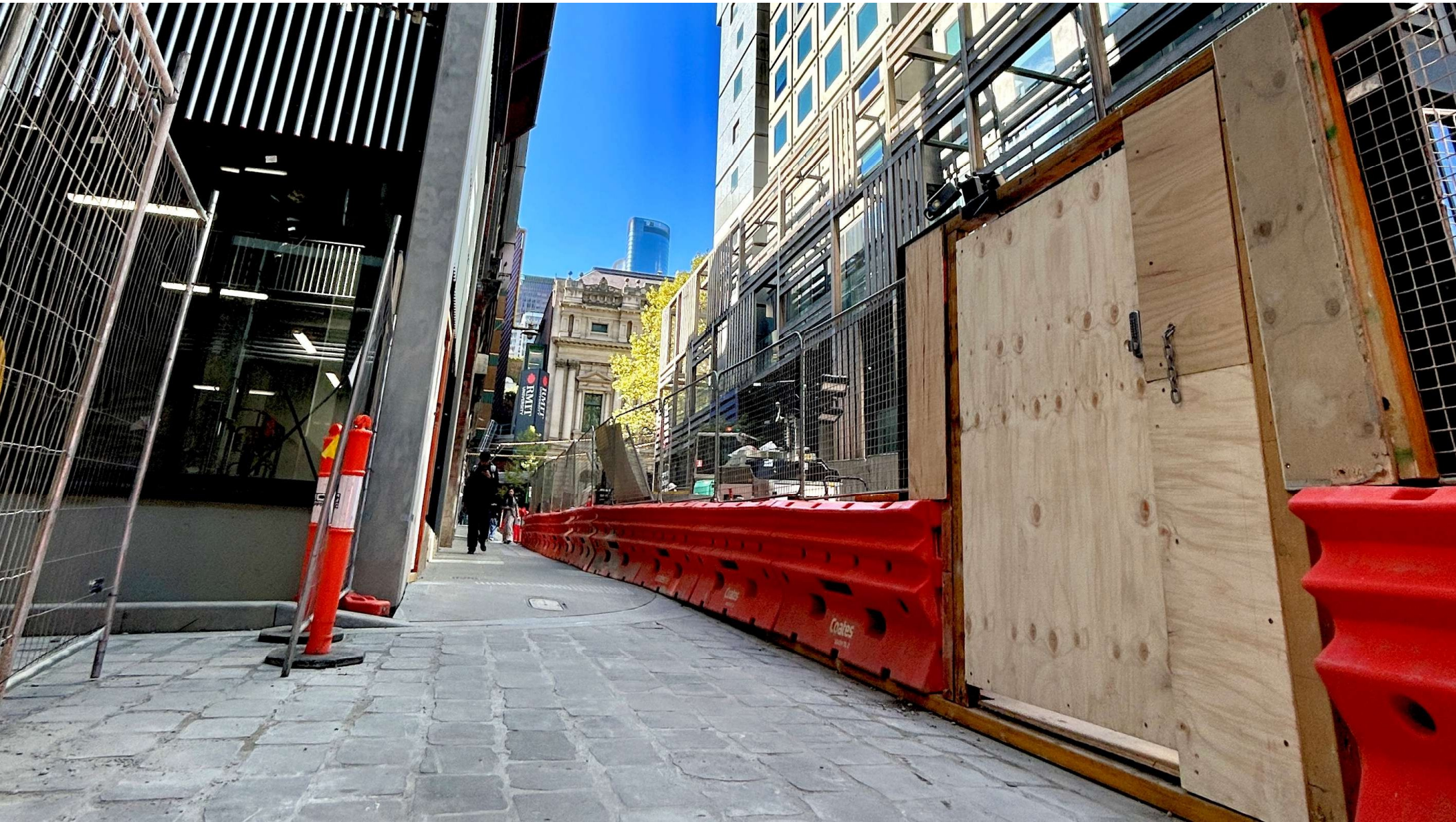
La Trobe Street public realm works



- The eastbound traffic lane of La Trobe Street and the Swanston Street western footpath was been reopened
- Roller door was installed in mid-February
- Northern footpath on La Trobe street due to reopen mid-May following final paving and reinstatement works
- Hand over of this area to the Over Station Development is underway.



OFFICIAL: Sensitive

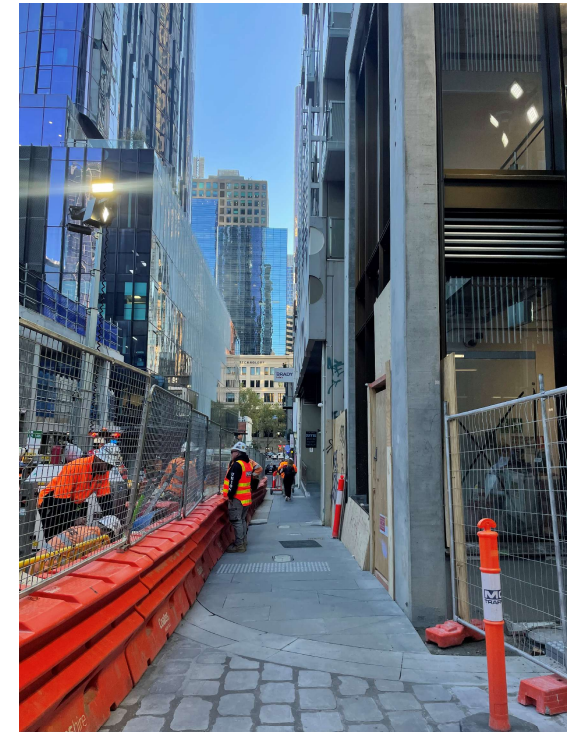


State Library Station

Little La Trobe Street



- Public realm and reinstatement works are continuing in Little La Trobe St.
- Watermain and utility connections are almost complete with legacy paving and bluestone following
- The northern footpath has now reopened with a pedestrian connection through Literature Lane and A'Beckett Tower on track for mid-May
- Southern footpath closure is ongoing during May with this area serving as the main logistics and delivery entry into the station following the reopening of La Trobe street eastbound lane.
- Road reinstatement works including resheeting and asphaltting will commence in early May with a short-term extension of the site footprint to facilitate these works
- Program targeting mid-year reopening.



OFFICIAL: Sensitive



State Library Station

A'Beckett Street site



- Final structural concrete pour has been completed
- Metro deck removal has commenced and will be followed by final waterproofing and backfill works
- Decladding of the acoustic shed is well underway, followed by demolition and capping beam removal throughout May
- In mid-May a mobile crane will be in place at the corner of A'Beckett and Stewart streets to facilitate shed demolition works.
- Short term impacts to residential parking for A'Beckett Tower and Currie & Richards with alternative parking available
- The worker sheds will be removed during June. During this time there will be a short-term closure around the basketball courts to ensure pedestrian safety.



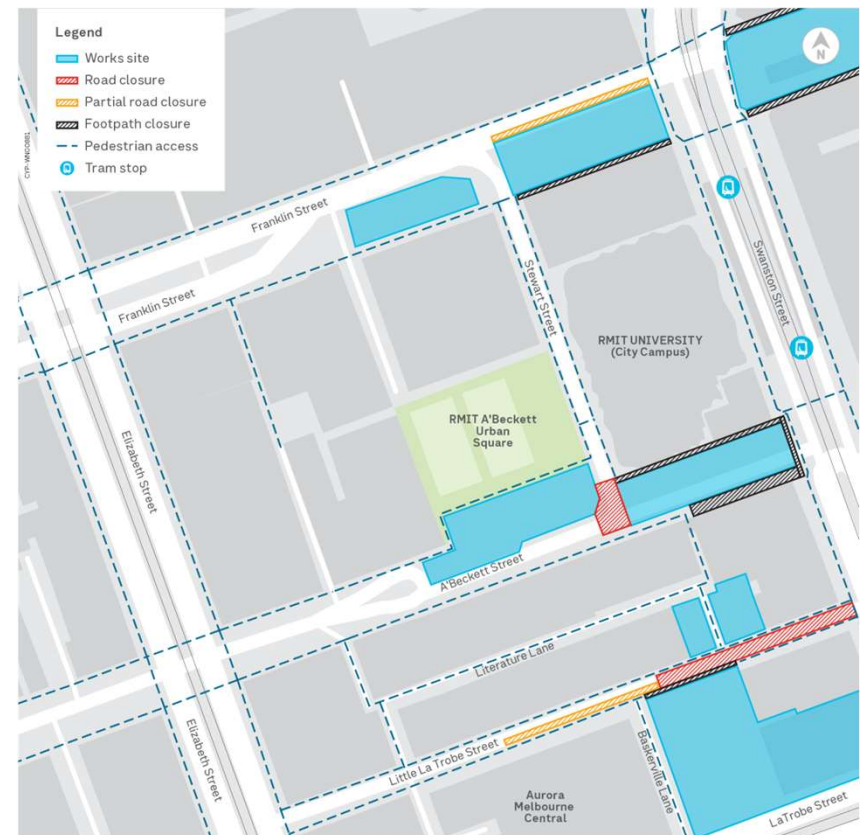
OFFICIAL: Sensitive

State Library Station

A'Beckett Street footpath closures



- From early-May, the north and south A'Beckett Street footpaths will be closed for shed demolition and capping beam removal works
- A pedestrian way-finding plan has been developed with signage to be installed to support the closure
- The A'Beckett Tower Arcade will be and reopened from mid-May to allow additional pedestrian access between A'Beckett and Little La Trobe streets
- Business support measures are in place during these works including signage, custom maps and promotions
- Detours are in place via Little La Trobe Street and Literature Lane as well as Elizabeth, Franklin and Stewart street.



OFFICIAL: Sensitive



State Library Station

Franklin Street East site



- Works are continuing at Franklin West on the station canopy and public realm and reinstatement works
- Final capping beam removal for Franklin Street will be complete this week
- Staged footpath closures are in place on the southern footpath for utility connections and paving works
- Paving along the northern footpath continues with this footpath on track to open by the end of May.



OFFICIAL: Sensitive

State Library Station

Franklin Street West site



- The northern footpath and eastbound traffic lane have been reopened
- The eastbound traffic lane will need to close again during June for final reinstatement works
- The southern footpath closure between Swanston and Stewart streets continues during May and is on track to reopen late May/early June
- The north-south crossing has reopened with newly installed traffic signals
- Capping beam removal at Franklin East is complete
- Reinstatement works between Stewart and Elizabeth streets are planned for June.

OFFICIAL: Sensitive



Precinct wide road and footpath closures

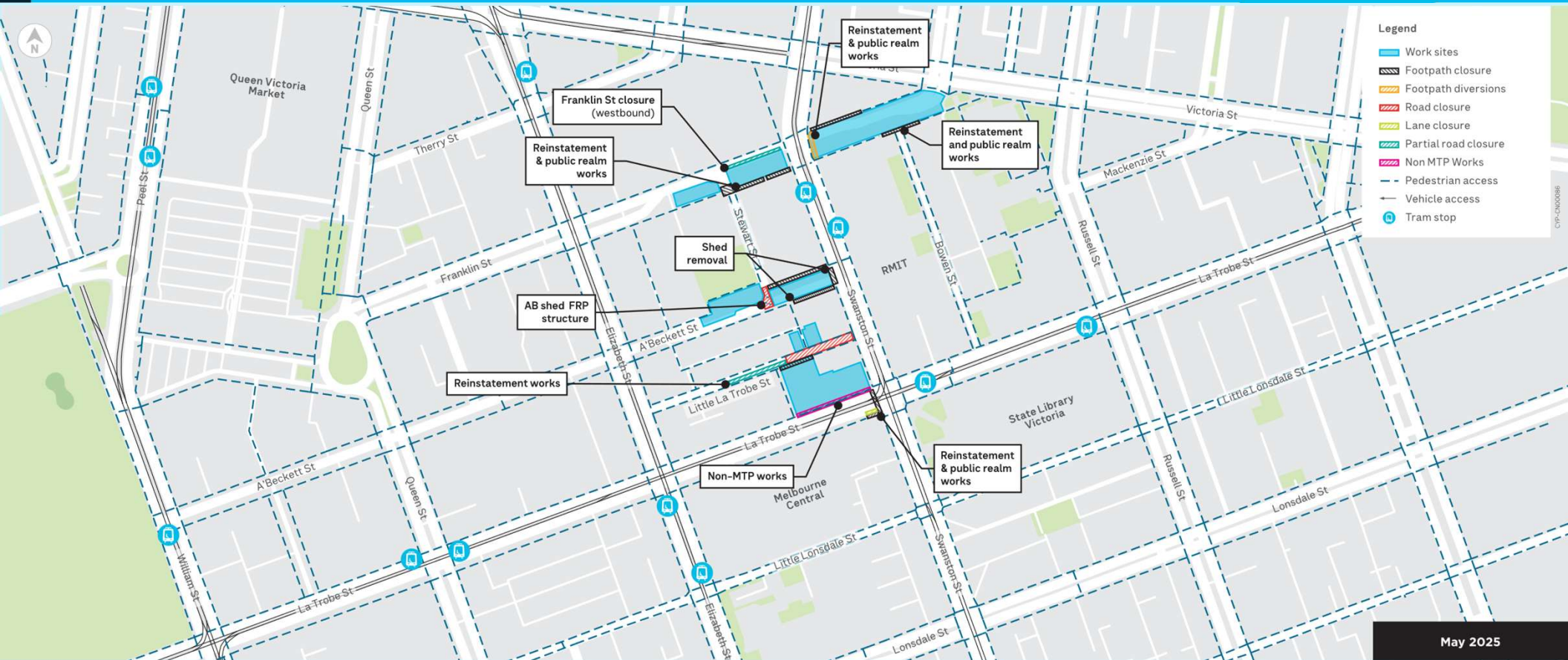
[illegible]

OFFICIAL: Sensitive

May 2025 Proposed Traffic Changes



Creative
Program



May 2025

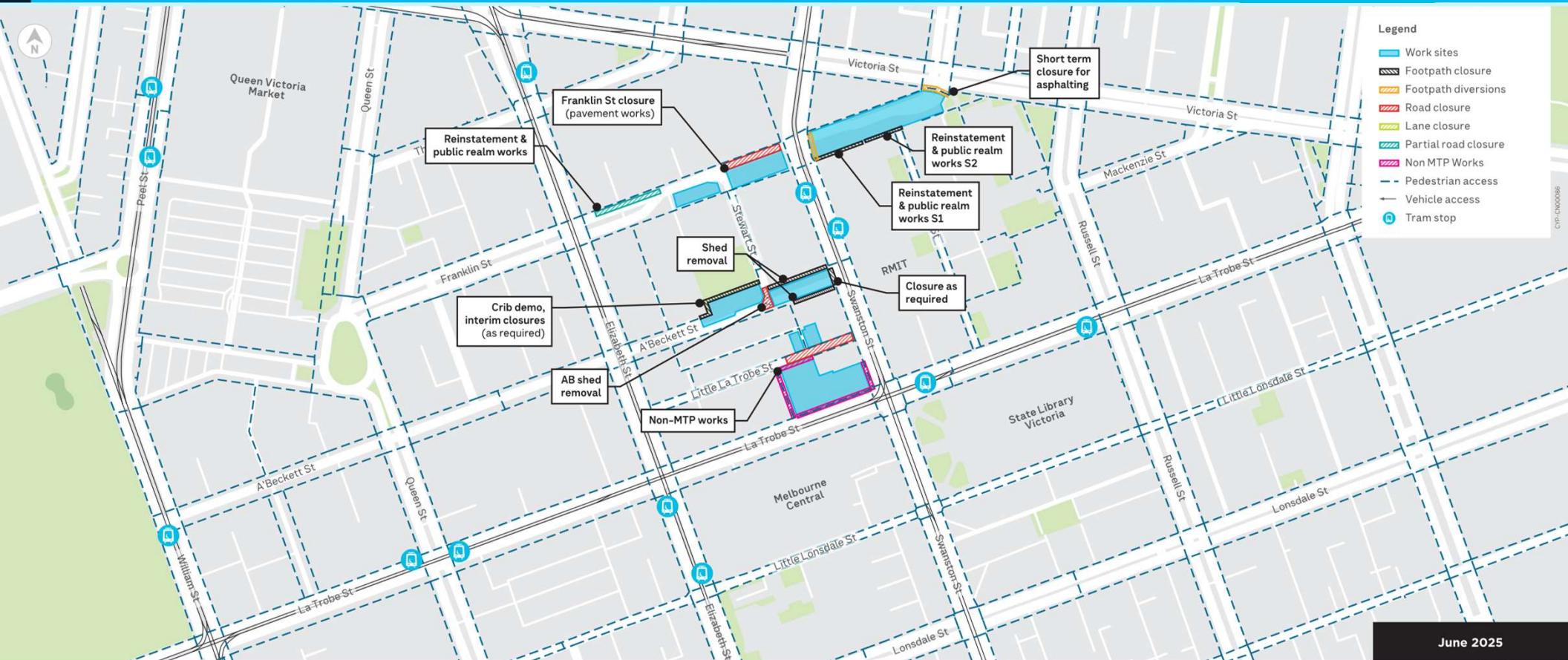
Metro Tunnel Project - State Library Station - External works look ahead

OFFICIAL: Sensitive

June 2025 Proposed Traffic Changes



Creative
Program



June 2025

Metro Tunnel Project - State Library Station - External works look ahead

OFFICIAL: Sensitive

Questions



Town Hall Station update

Presenter: Dan Young

OFFICIAL: Sensitive

Town Hall Station

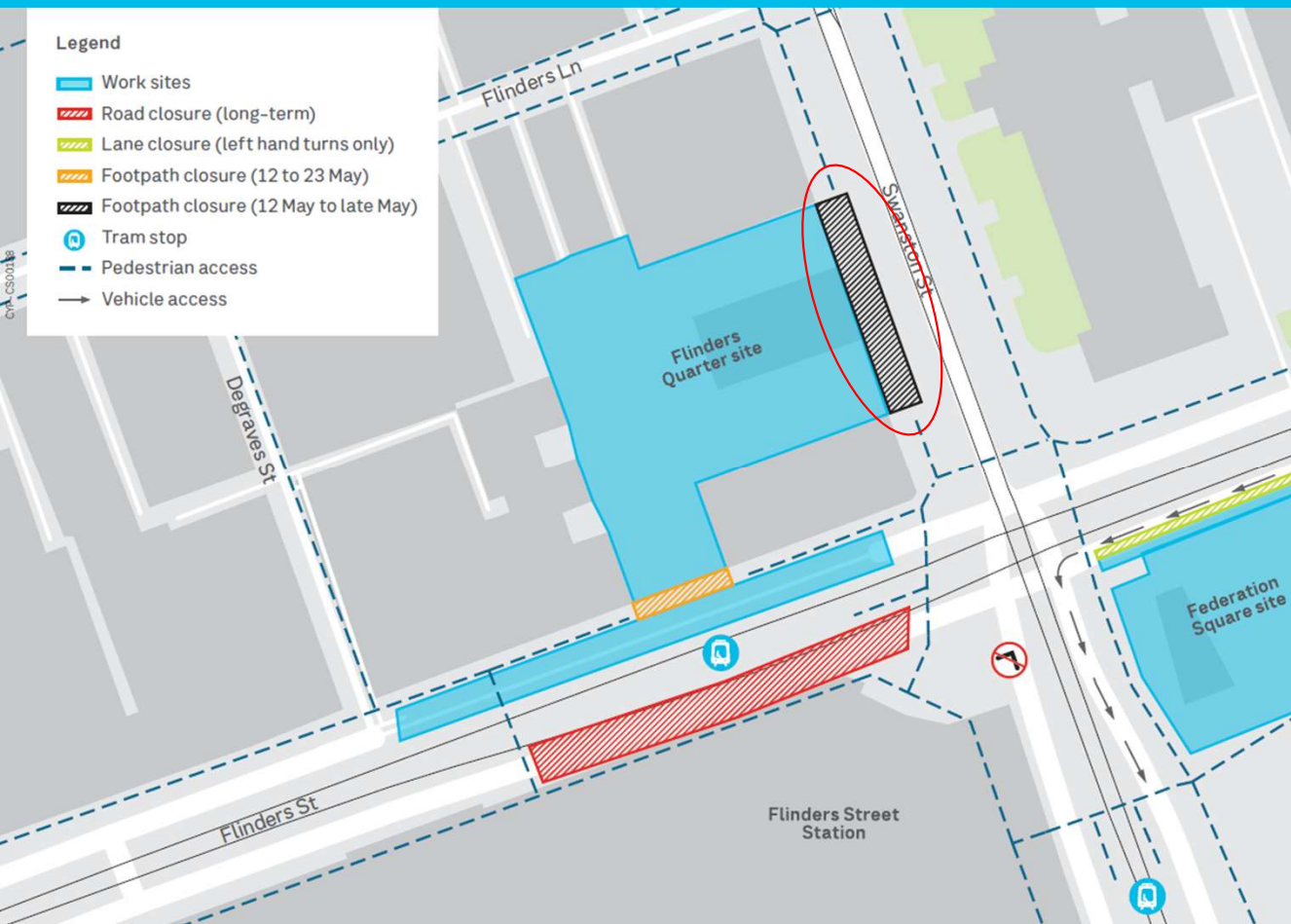
Flinders Quarter



- Works are continuing to construct and fit out the station entrance at Flinders Quarter
- CYP are preparing to handover the site to Lendlease to commence construction of Town Hall Place in mid-2025
- CYP works will continue until late 2025 within the station and at ground level

Town Hall Station

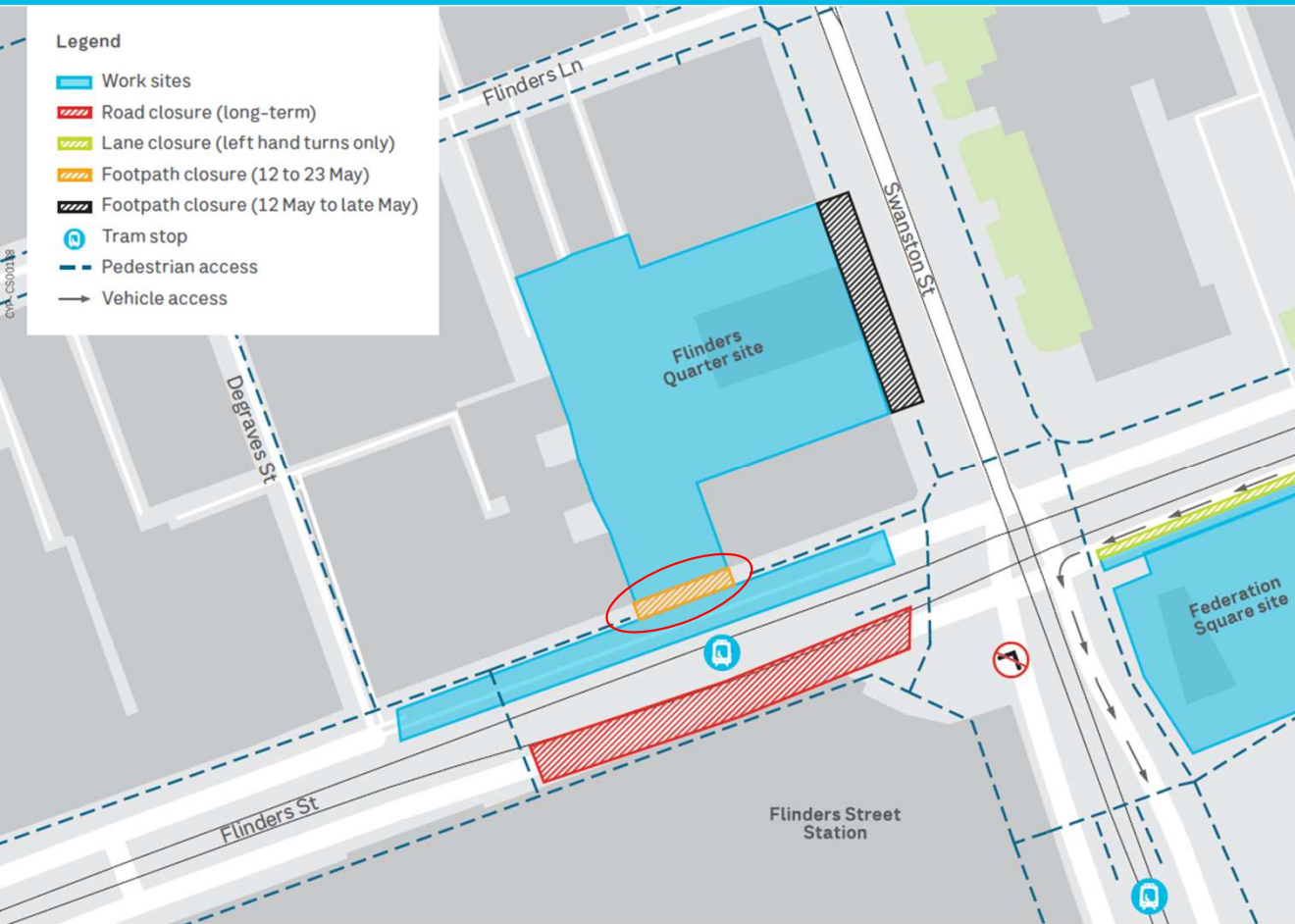
Swanston Street footpath closure



- The Swanston Street western footpath will be closed from 12-31 May, during footpath and gantry works
- The footpath will be closed between Young & Jackson's and Dean's Souvenir's
- Access to all local buildings and businesses will be maintained at all times and traffic controls will be in place
- These works are expected to generate medium periods of noise with intermittent periods of high-level noise

Town Hall Station

Flinders Street footpath closure



- The Flinders Street northern footpath will be closed from 12-23 May
- This is to allow for gantry modification and minor mechanical, electrical and plumbing works
- Access to all local buildings and businesses will be maintained at all times
- Traffic controls will be in place to manage the closures
- These works are expected to generate medium periods of noise with intermittent periods of high-level noise.

Town Hall Station

City Square



- Works on the Collins Street footpath are now complete
- The Swanston Street eastern footpath and tram stop have reopened
- Construction of the main entrance canopy is now complete, with minor fit out works continuing
- Fit out works are continuing underground

Town Hall Station

City Square



- Civil works will now continue over the coming months, including hard and soft landscaping
- There will be a staged closure of the Swanston Street eastern footpath throughout June and July during final reinstatement works
- This will include the reclosure of tram stop #11 (City Square/Swanston Street)

Town Hall Station

Federation Square

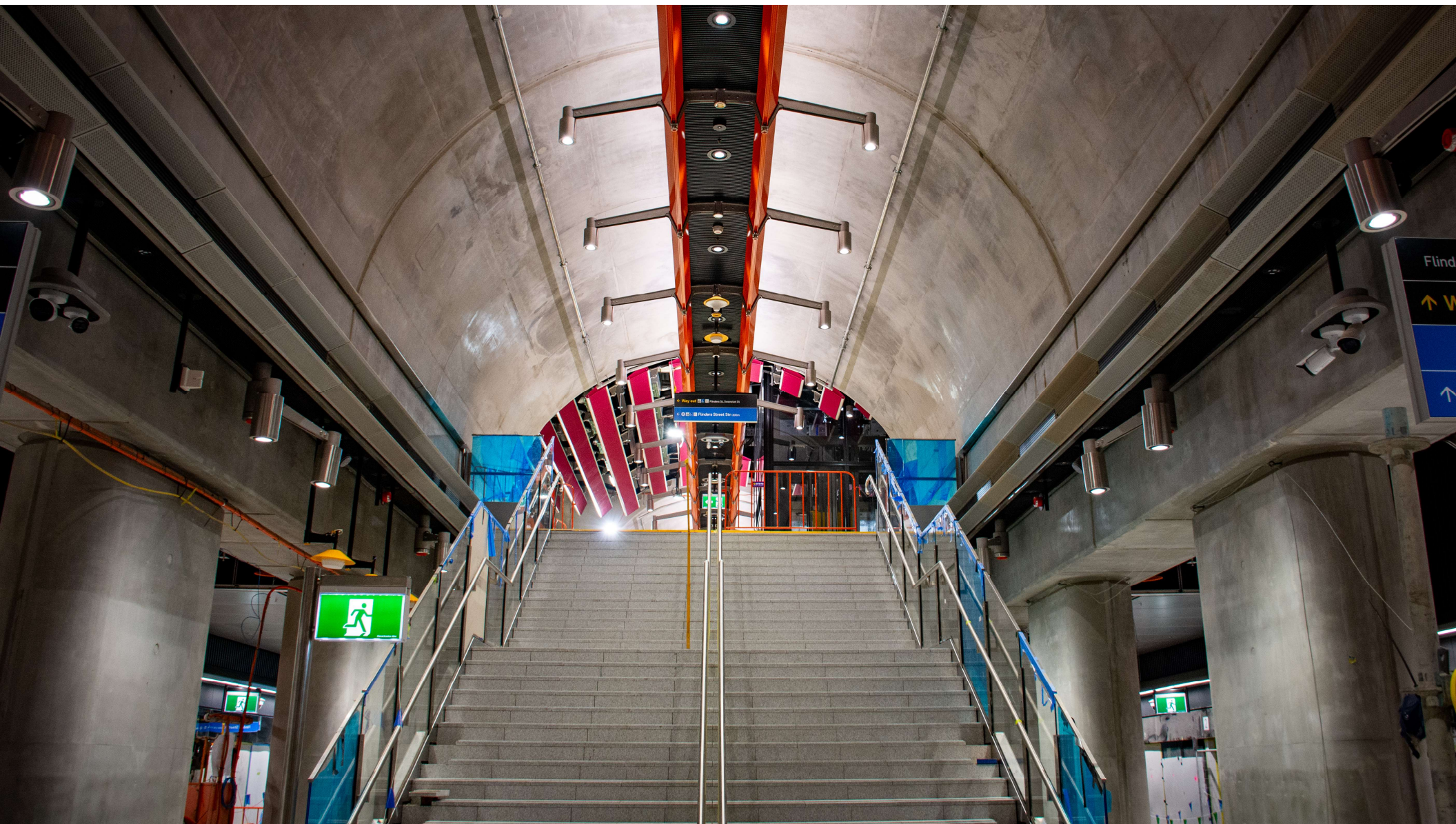


- Removal of the acoustic shed is complete
- Service investigation where cribbing once was to confirm services
- Demolition of tiles and bluestone in that area commencing late May and continuing for approximately 2 weeks
- Demolition of concrete capping beams commencing in June
- Passenger adit targeting completion end of May









Town Hall Station

Long-term lookahead

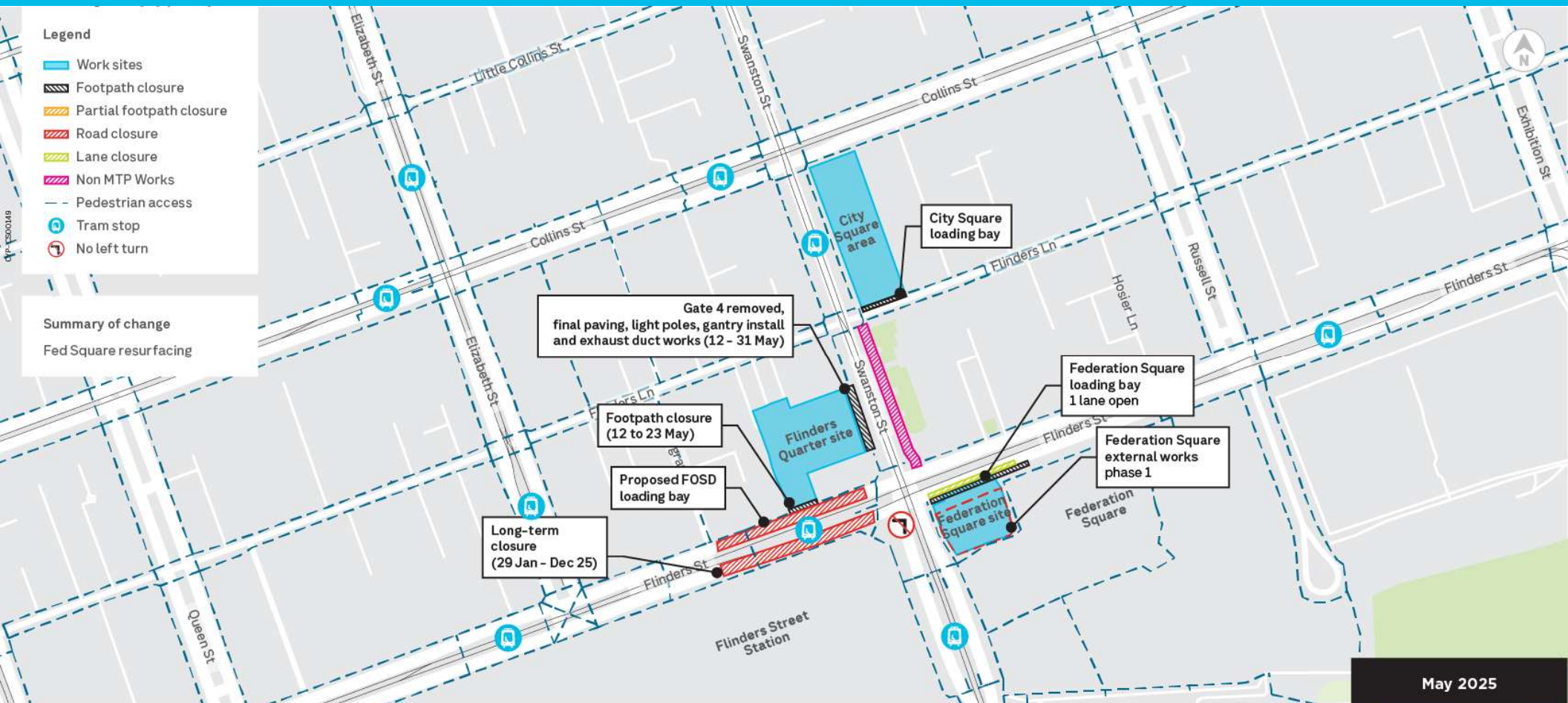


ACTIVITY	MAY	JUN	JUL	AUG	SEP	OCT	NOV
Flinders Quarter station entrance construction	○ —————	—————	—————	—————	—————	—————	—————
Flinders Street northern footpath closure	○ ——— ●						
Swanston Street western footpath closure	○ ——— ●						
Swanston Street eastern footpath closure		○ ————— ●					
City Square above ground works	○ —————	—————	—————	—————	—————	—————	—————
Flinders Lane/Swanston Street reinstatement works		○ ————— ●					
Fed Square above ground works	○ —————	—————	—————	—————	—————	—————	—————

OFFICIAL: Sensitive

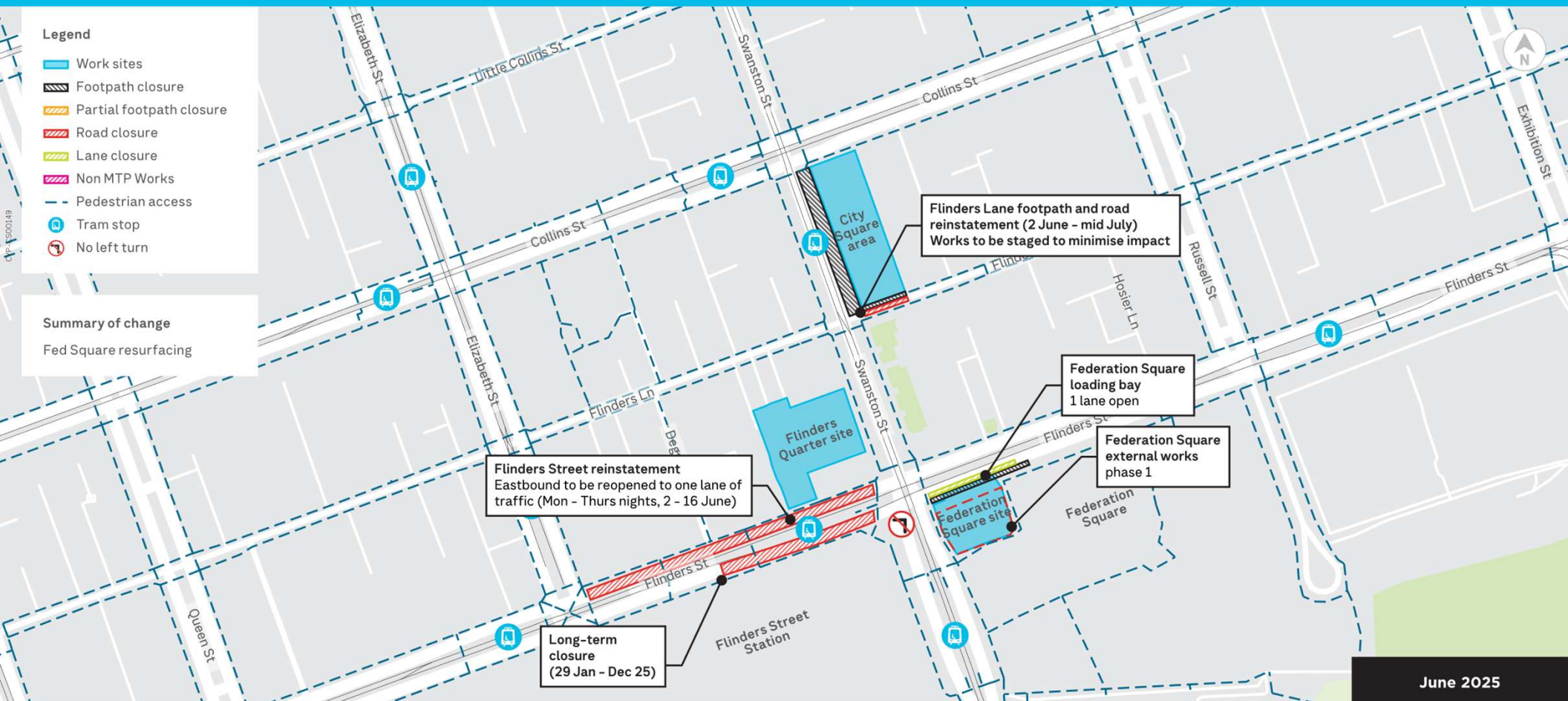
May 2025

Proposed Traffic Changes



June 2025

Proposed Traffic Changes



Questions



Metro Tunnel Creative Program update

Presenter: Riley O'Farrell

OFFICIAL: Sensitive



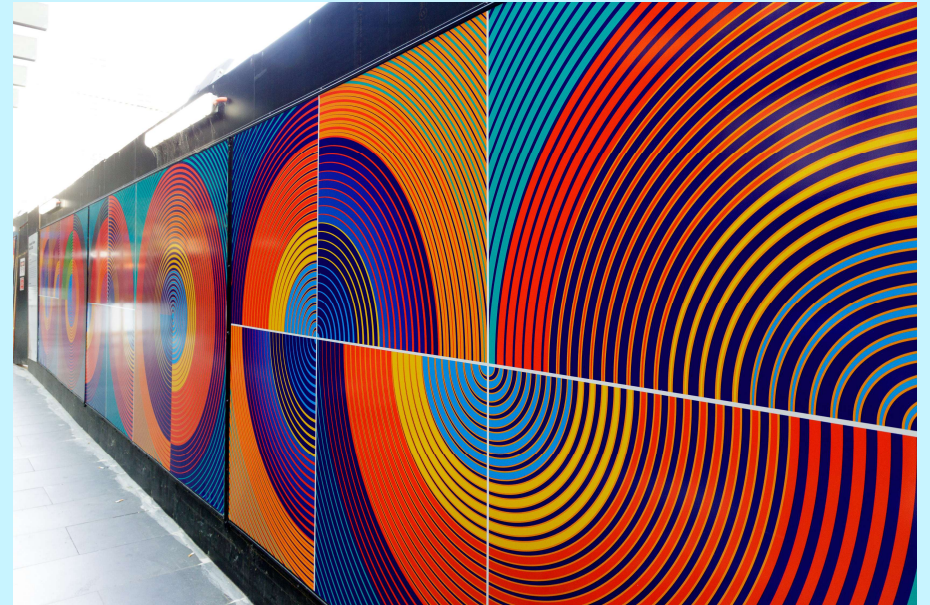
Program update

Fragments of Colours Serie 1:2, Carlos Almenar Diaz **La Trobe Street**



**Creative
Program**

Installed on La Trobe Street due to hoarding availability (has since been removed)



OFFICIAL: Sensitive

Connecting Spaces, Angharad Neal-Williams Scott Alley



Creative
Program

Captures the hustle of the city and how we share common spaces in unique ways



OFFICIAL: Sensitive



Upcoming projects

Tanderrum Dancers

Scott Alley



Creative
Program

- Photography artwork by First Nations photographer James Henry (placeholder image only)
- Images celebrate *Tanderrum*, a revival of a traditional ceremony for the coming together of the Kulin Nation peoples, an opening ceremony for the Melbourne International Art Festival held at Fed Square from 2013-2019
- Install date TBC, likely 6/7 May
- On display during National Reconciliation Week 27 May- 3 June



OFFICIAL: Sensitive

Creativity and Construction: Public Art and Infrastructure **Melbourne Design Week event**



Creative
Program

- 6:00-7:30pm, Thursday 22 May, The Edge (Fed Square)
- \$7 booking fee, [tickets available online](#)
- Presented by Metro Tunnel Creative Program and Open House Melbourne in partnership with Fed Square as part of Melbourne Design Week (MDW).
- Panel discussion with contemporary artist Maree Clarke (linewide artwork), architect Jefa Greenaway (Anzac Connection to Country Pavillion) and designer Stephen Banham (Kensington artwork), Namilla Benson event facilitator.

Questions

Minutes and actions

Presenter: Chris Lovell

Action items



#	DATE RAISED	ACTION / ISSUE	OWNER	STATUS	CLOSED
C6-4	16 February 2018	Provide further information on precinct waste management strategy including Royston Place design treatment.	CYP	Open – CYP anticipates an update will be available in the next meeting.	
C59-1	15 April 2024	MTPO to provide an update on the reopening of Campbell Arcade.	MTPO	Open – The Degrares underpass reopened on 29 January 2025. Campbell Arcade is expected to reopen in mid- 2025.	
C62-1	11 November 2024	MTPO to invite Scape to present on the OSD at a future CRG meeting.	MTPO	Open - Scape has committed to presenting at a future CRG.	
C63-1	10 February 2025	MTPO to distribute key contacts in the operational context (post-project completion) for CBD stakeholders.	MTPO		

OFFICIAL: Sensitive



Project wide update

Presenter: Kate Walshe

OFFICIAL: Sensitive

