

West Tarneit Station

Community engagement report

June 2025



View of the new West Tarneit Station entrance, looking to the northwest. Artist impression only, subject to change.

Contents

Project overview	3	Look and feel	13
Design for now and the future	3	What else you told us	16
Gathering your feedback	4	Next steps	17
About you	5	Project timeline	17
Moving around the area	8		



View of the new West Tarneit Station pedestrian underpass, looking to the northeast. Artist impression only, subject to change.

Project overview

The Victorian Government is building a new station in Tarneit's west to better connect the growing suburbs of the west to Melbourne's CBD. To be delivered by the Level Crossing Removal Project, West Tarneit Station will be located near the corner of Leakes and Davis roads. It will provide a much-needed public transport link on the Geelong Line as part of the V/Line network.

When it opens in 2026, West Tarneit Station will include a 4-bay bus interchange, parking for up to 400 commuters, and an accessible pedestrian underpass.

The station will also feature a welcoming, landscaped precinct, equipped with seating, separated walking and cycling pathways, bike hoops and secure bike storage.

Construction on the project is scheduled to start this year and be complete in 2026.

Design for now and the future

We are planning for the future of rail services through Tarneit. With the proposed V/Line track duplication and electrification in future years, the design of West Tarneit Station will facilitate additional tracks that may be required, as well as any adjustments to the platforms.

Furthermore, the area north of the station has been space proofed for additional parking spaces, a second bus interchange, and a vehicle access connection point into the station precinct to be added in the future.

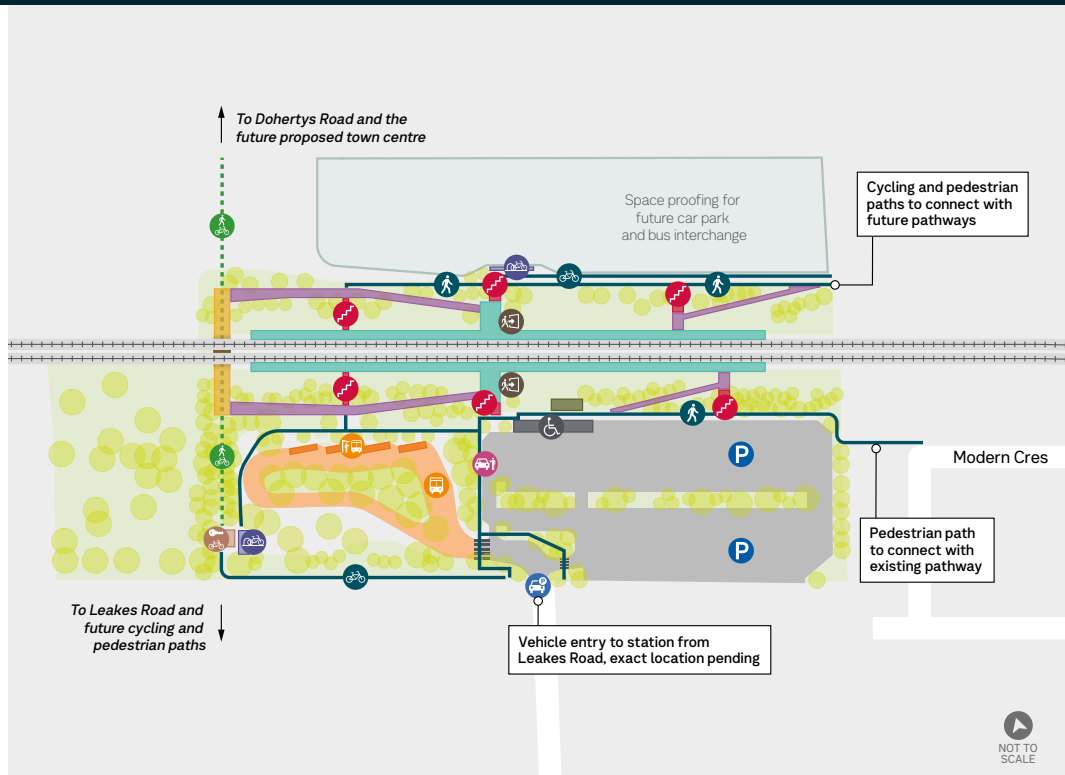
Our design also aligns with the proposed town centre and surrounding development, ensuring there will be cross corridor connections with the future precinct.

Concept plans for West Tarneit Station

Legend

- Station platform
- Ramp to the platform
- Pedestrian underpass
- Platform access via stairs
- Bus bays and shelters
- Bus interchange
- Parkiteer (locked bike storage)
- Bike hoops
- Landscaping
- Protective Services Officer facility
- Cycling paths
- Pedestrian paths
- Main station entrance
- Station car park
- Accessible parking
- Vehicle entry
- Pick up drop off zone
- Zebra crossing
- Future pedestrian and cycling connections

Subject to change



Gathering your feedback

We asked you to have your say on what you value about the local area, your key challenges in moving around the area, what you'd like to see reflected in the station design, your landscaping preferences, and how you'd like to hear from us.

The project information was available for feedback from Friday 15 November until Sunday 15 December 2024.

Your feedback was collected via an online survey on the Engage Victoria website, online and in-person information sessions, and pop ups at Tarneit Station. Printed surveys with a reply paid envelope were available by request. The online surveys were also available in Punjabi, Hindi, Mandarin, and Gujarati.

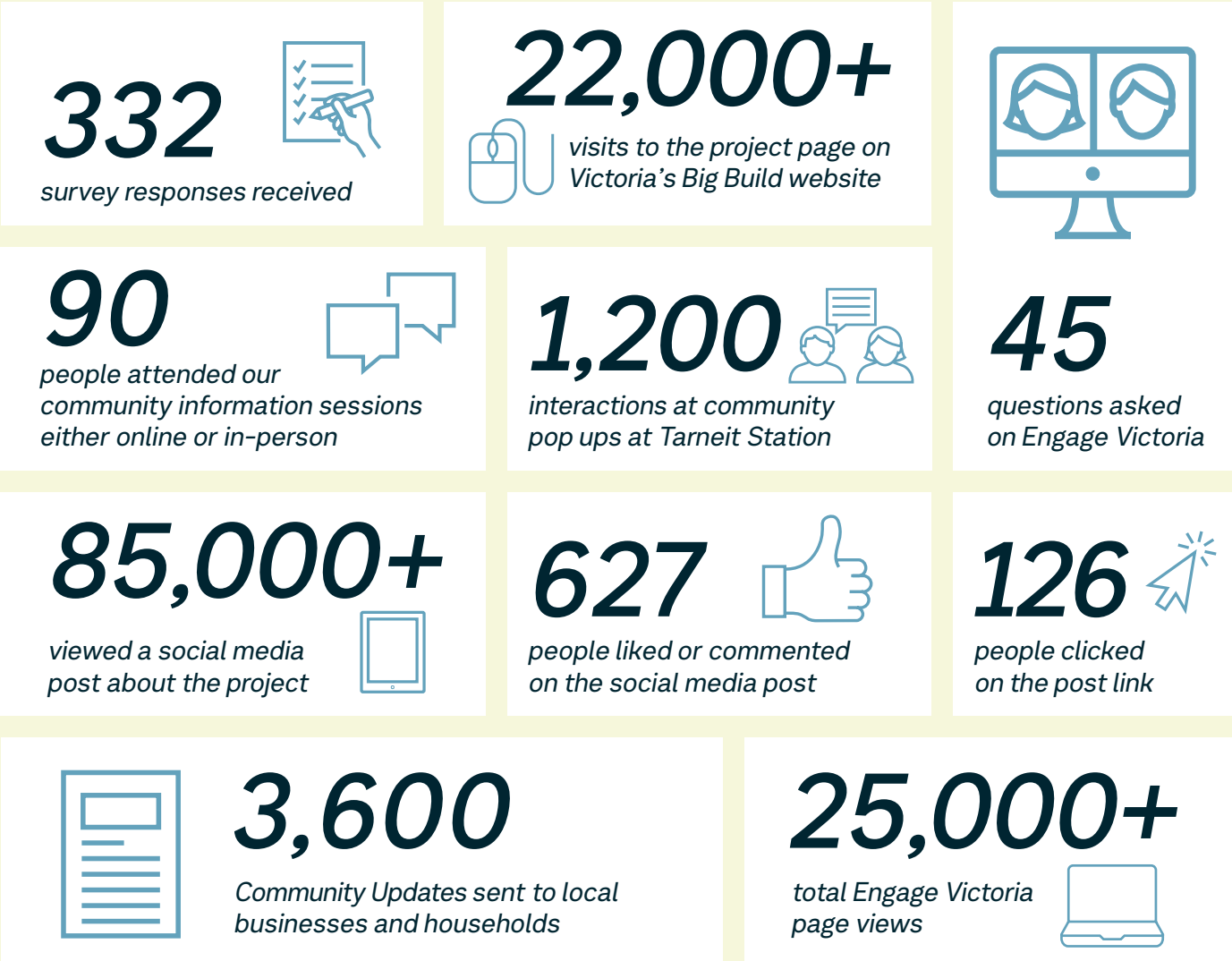
We also invited the community to ask questions via our Engage Victoria project page.

The feedback received, along with detailed technical assessments and further design development, helps to inform the final designs for the new station. The feedback also helps us understand what's important to the community.

Thank you to all who submitted feedback and attended an information session.

Your feedback

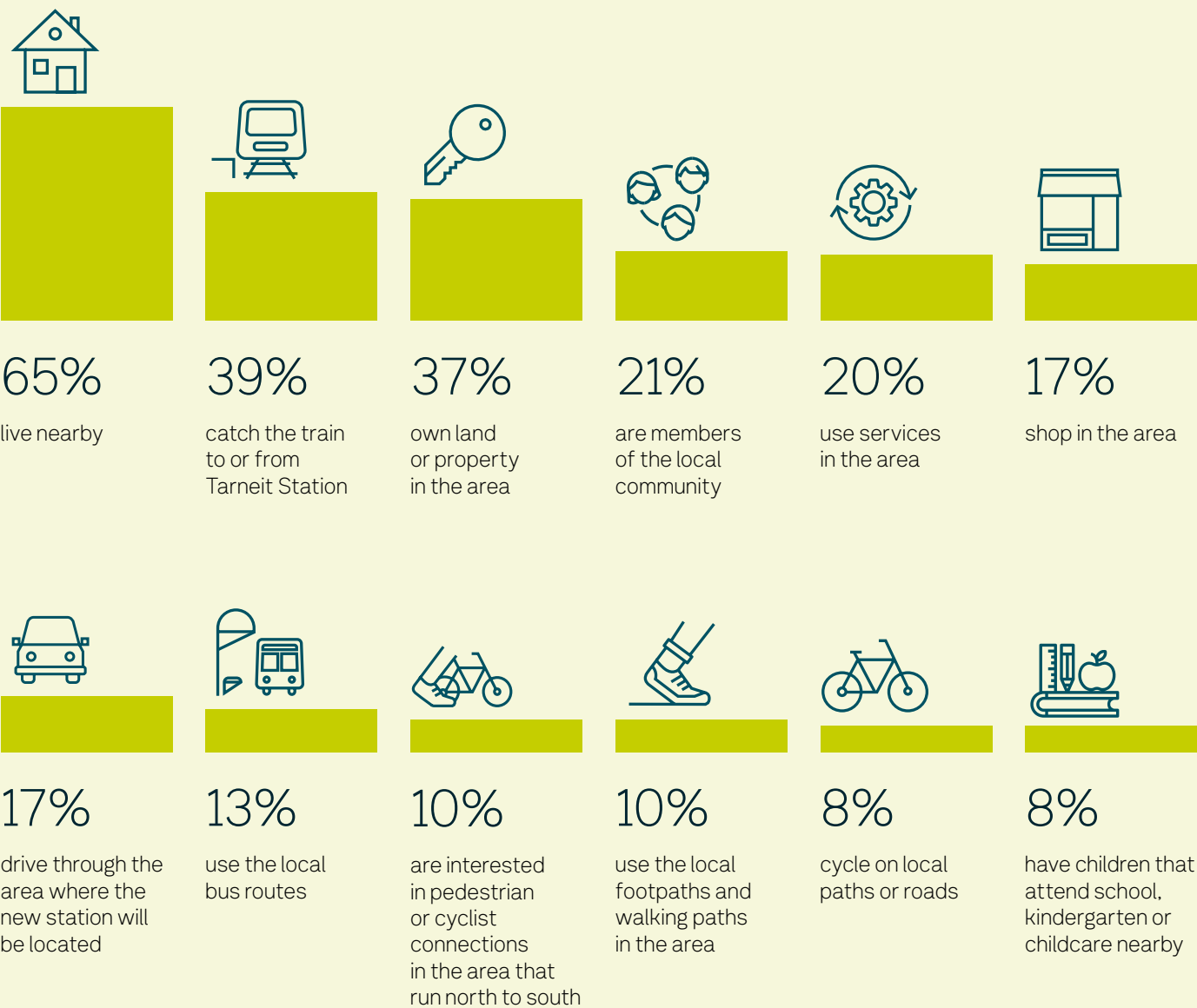
There was a high level of community interest in the project during the engagement period.



About you

We asked you to share your preferences, insights and feedback on the project.

Here's some information about respondents:



Other respondents were business owners, potential property owners and people who work or study in the area.



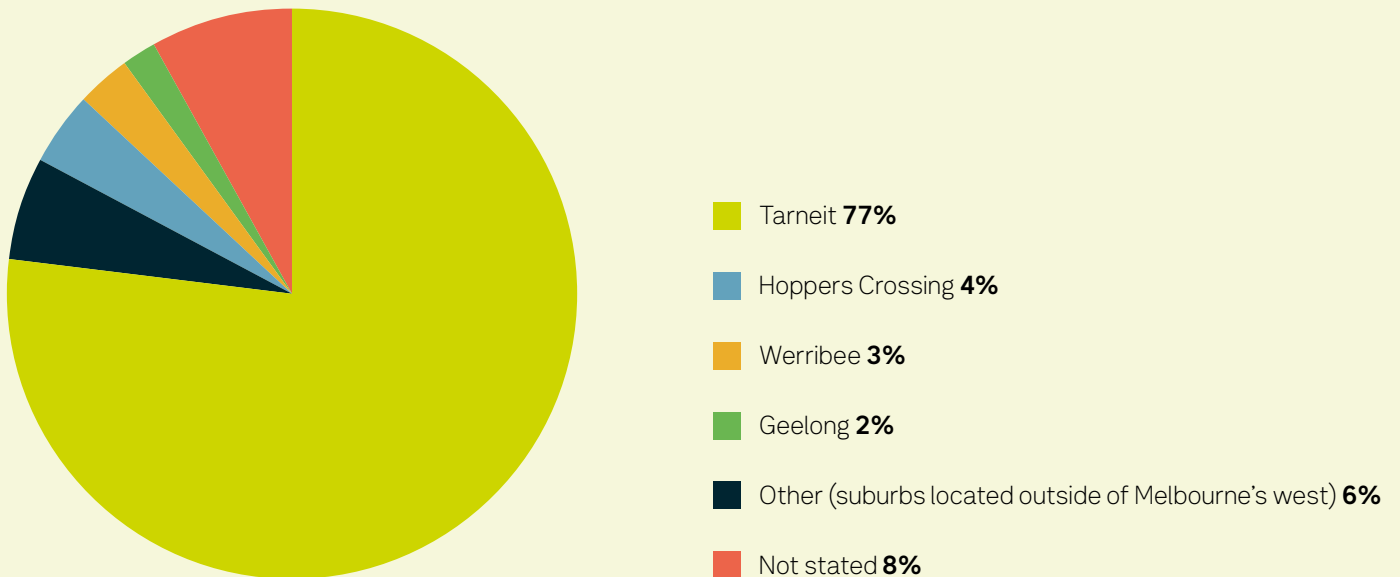
About the data

Data in this report is summarised from the 332 responses to the community survey.
(Note that some survey questions had multi-select response options. In these cases, percentages total more than 100%. Other questions required a single response. In these cases, questions may be slightly above or below 100% due to rounding. Not all questions required an answer.)



The site of the new West Tarneit Station, looking to the northeast.

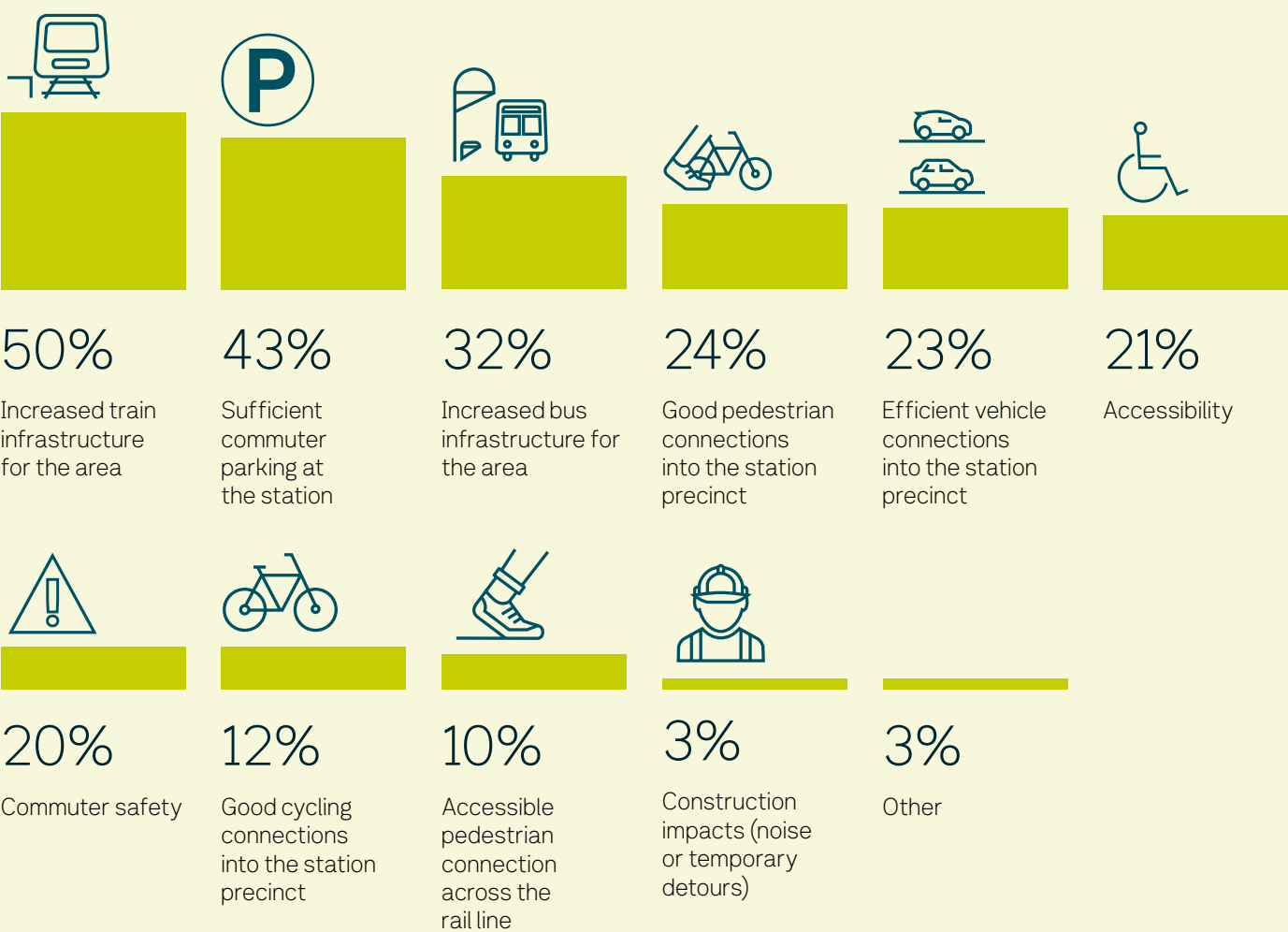
Where you live – by suburb



The site of the new West Tarneit Station, looking to the southwest.

Aspects of West Tarneit Station that are important to you

We asked you to select your top three areas of importance.



Naming the new station

The station naming survey went live on Engage Victoria from Friday 15 November until Sunday 15 December 2024. We invited the community to have their say on the proposed names for the new station.

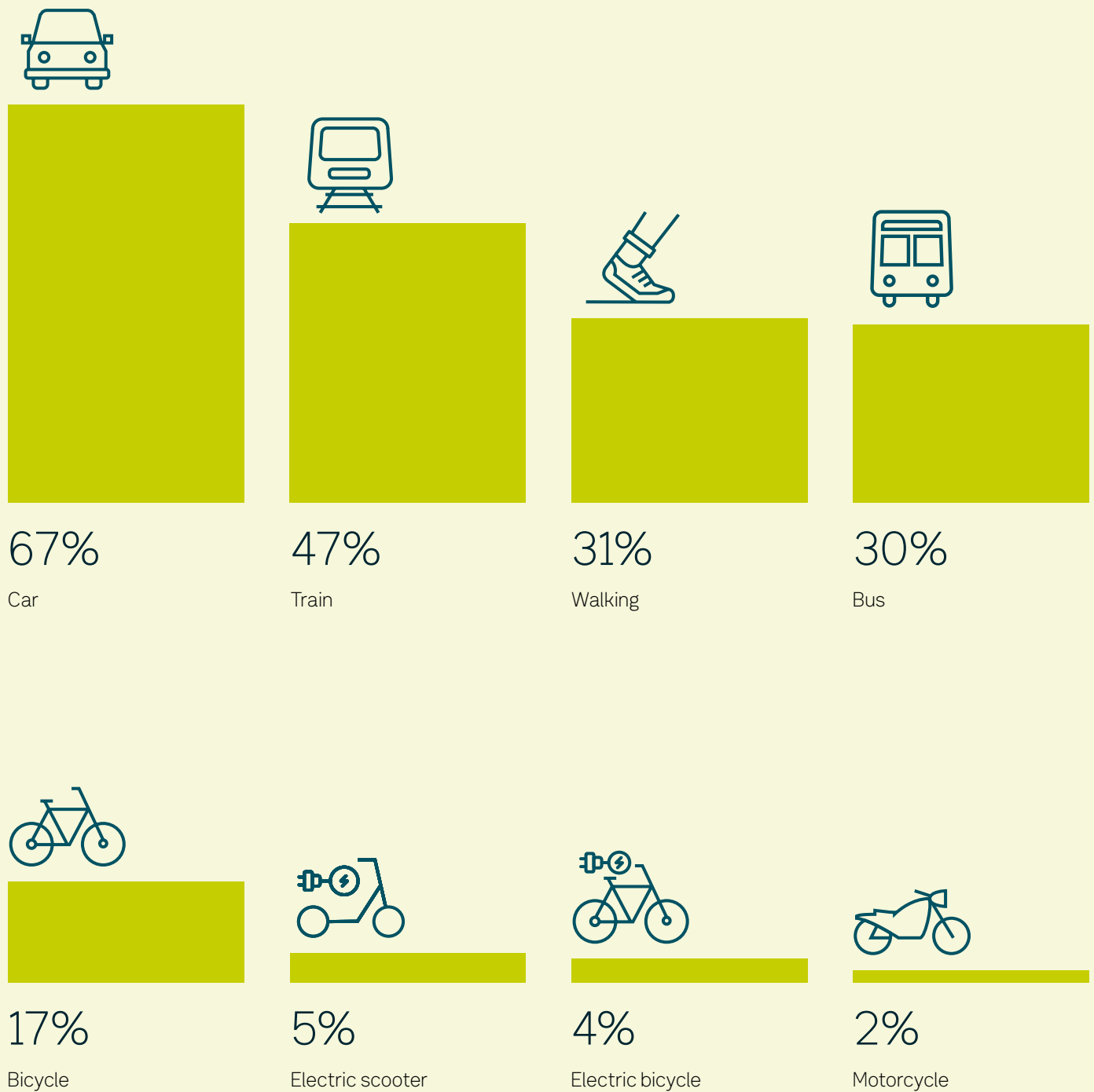
The proposed names were:

- West Tarneit Station
- Davis Creek Station
- Melaleuca Station
- Tarneit Rise Station
- Sunray Station

Out of 625 naming survey response, the community expressed the highest preference for West Tarneit Station.

Moving around the area

How do you mostly move around the area where West Tarneit Station will be built?



What is your main destination in the area?



Your challenges in moving around the area

The top challenges we heard

- Traffic congestion during peak times
- Quality of road infrastructure and intersections
- Train and bus service frequency
- Insufficient walking and cycling connectivity through the area

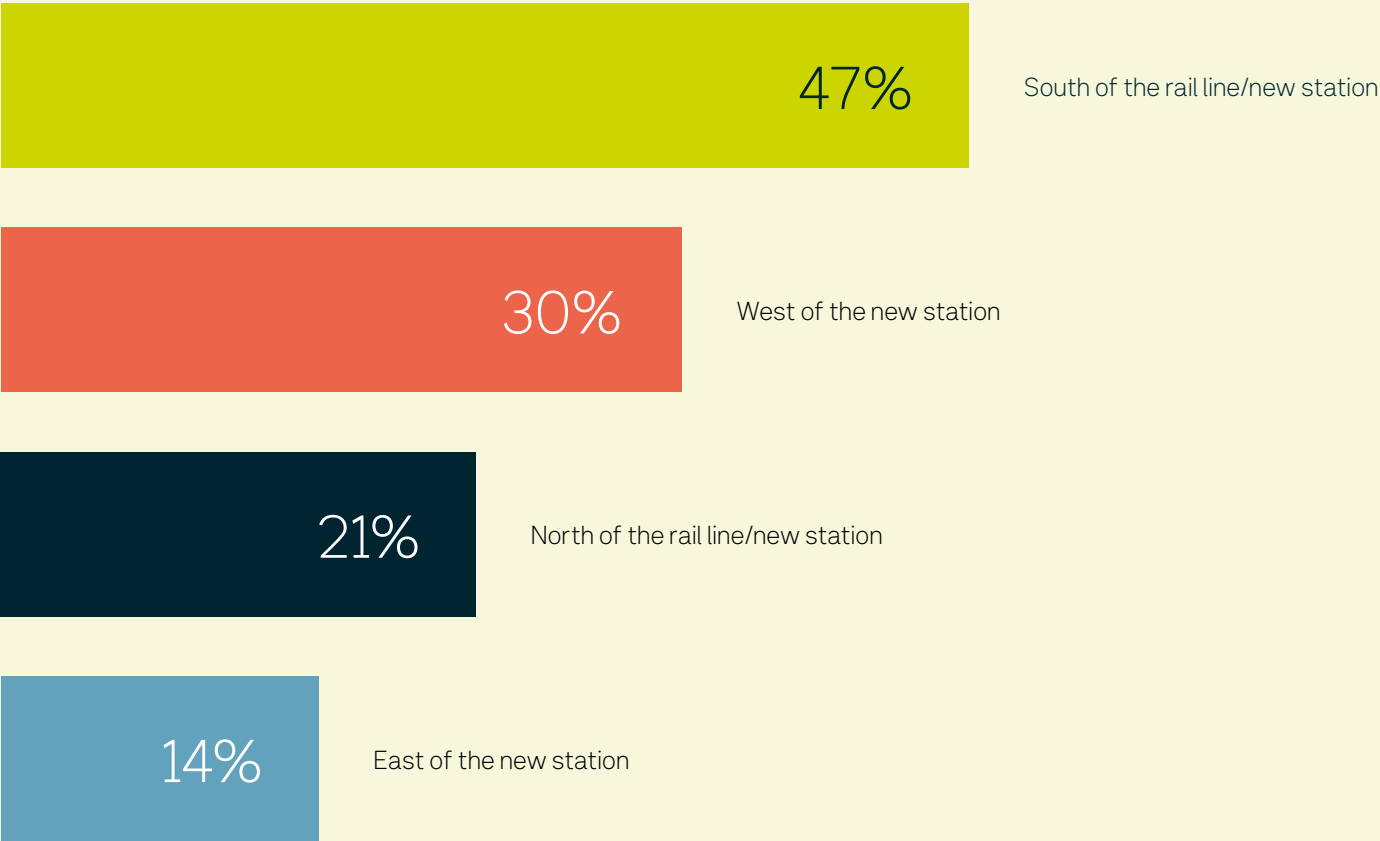
Other challenges mentioned

- Limited parking at Tarneit Station
- Vehicle accessibility when entering and exiting Tarneit Station
- Inadequate facilities at Tarneit Station, such as poor lighting and crowded platforms

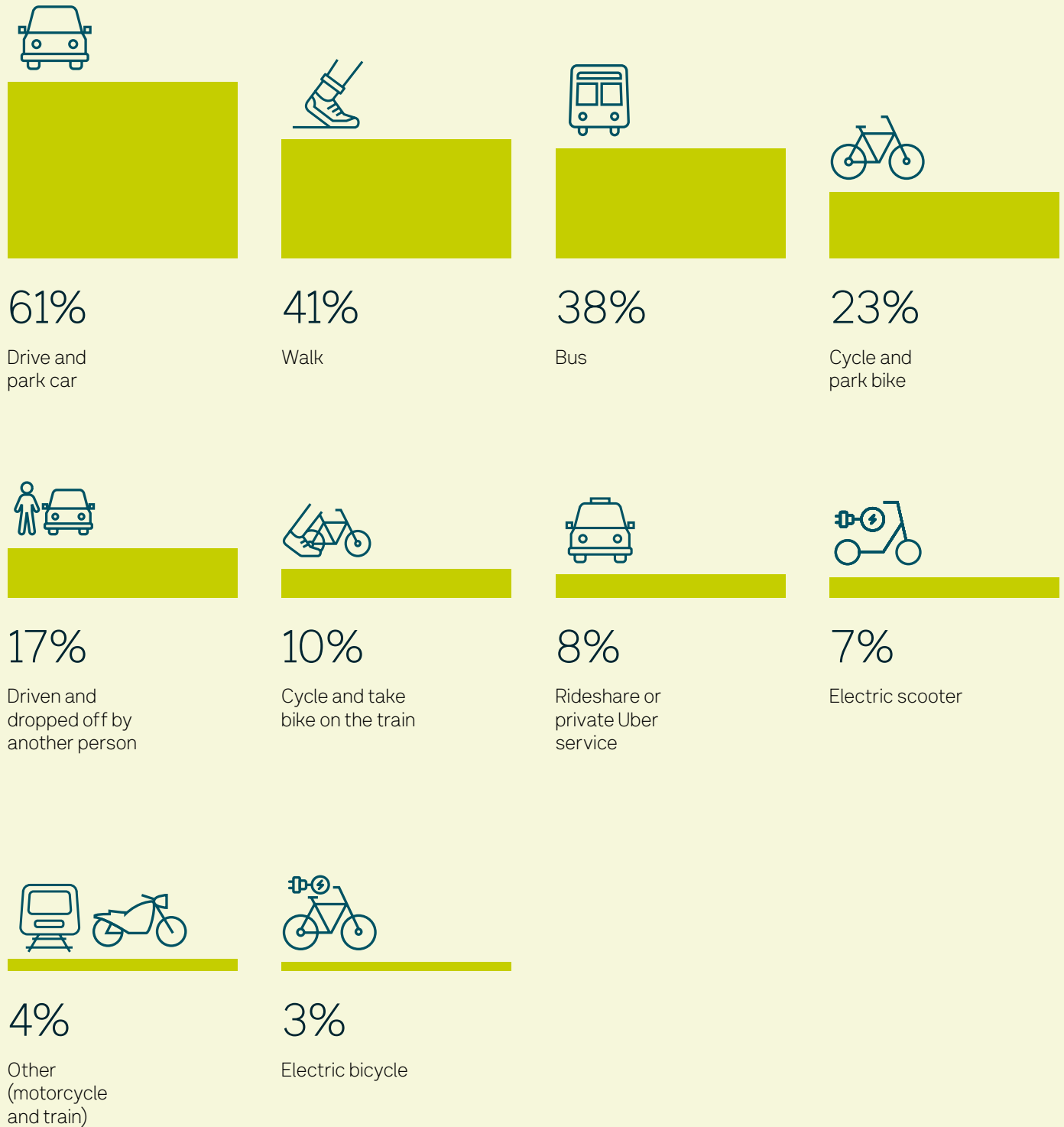
Examples of comments

“Poor cycling connections, and where they do exist, poor quality paths or lanes.”
“Large crowds at Tarneit, making the train impossible to leave during peak (and a struggle off-peak).”

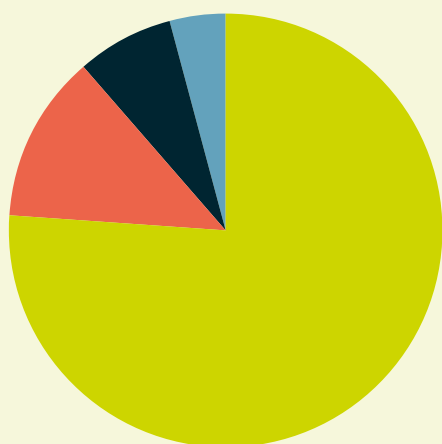
When West Tarneit Station is built, where do you expect to be travelling from?



When the new station is built, how do you plan to get there?

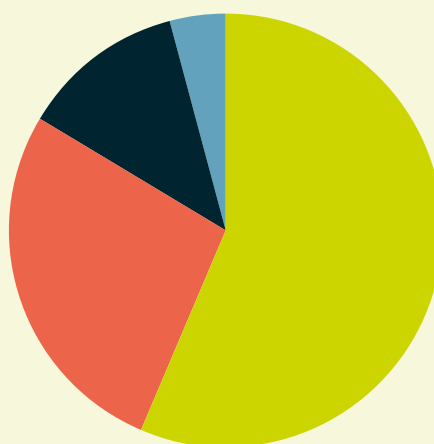


If you currently use Tarneit Station, how likely are you to start using West Tarneit Station when it's built?



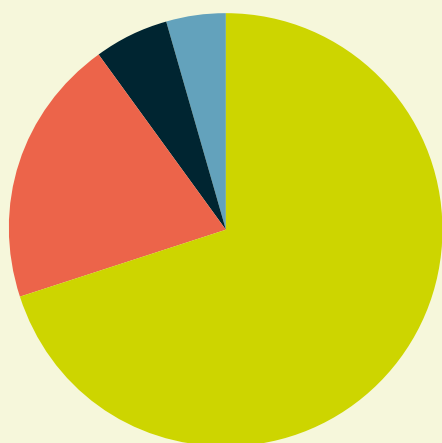
- Very likely **74%**
- Potentially **12%**
- I don't use Tarneit Station **7%**
- Don't know yet **4%**

If you live within walking distance from the new station, how likely are you to walk there when it is built?



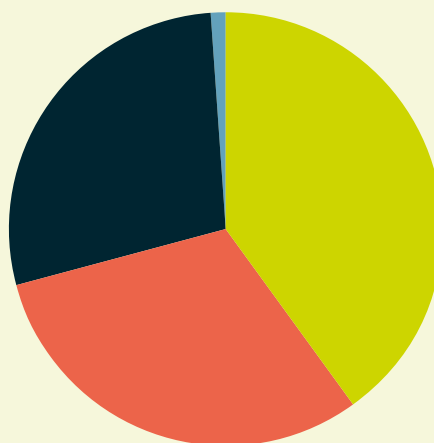
- Very likely **56%**
- I don't live within walking distance **27%**
- Potentially **12%**
- Not likely **4%**

How important to you is having walking and cycling connections as part of West Tarneit Station?



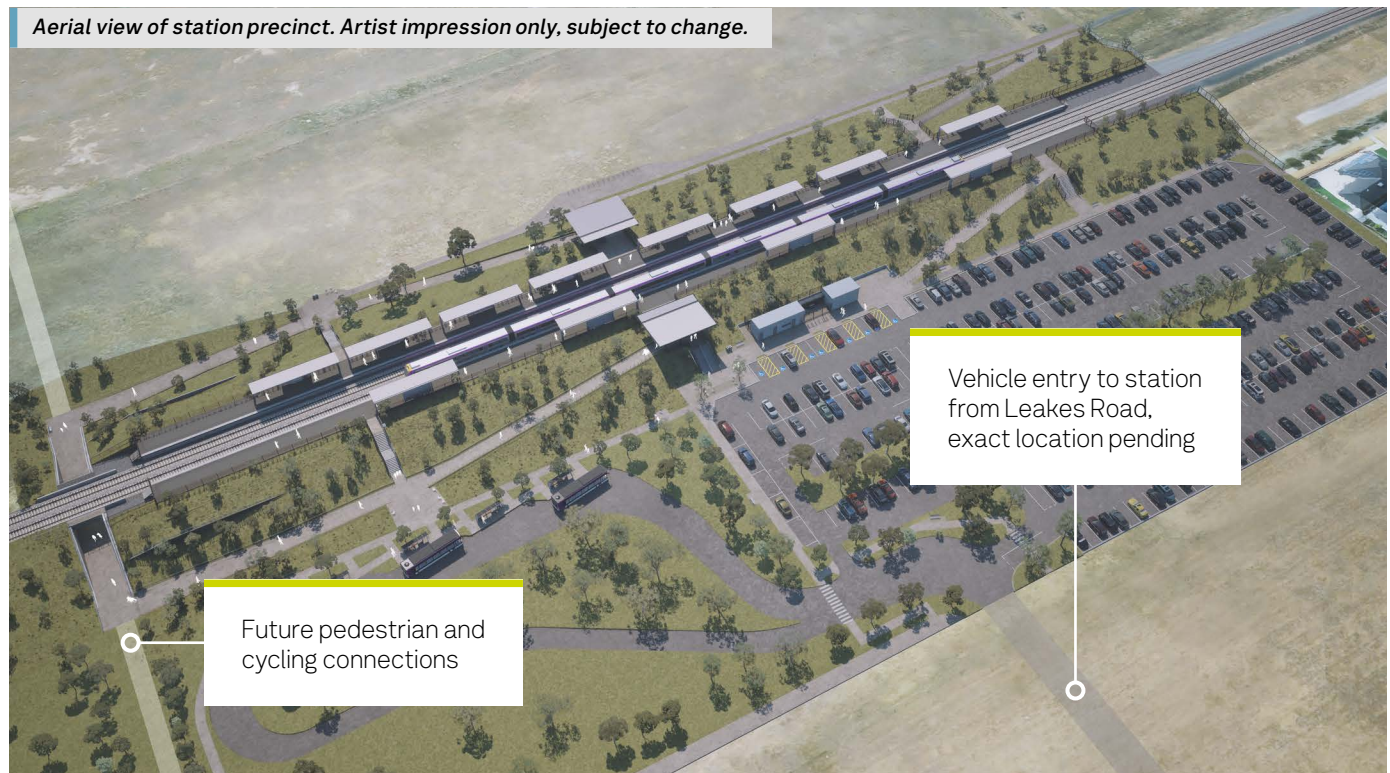
- Very important **63%**
- Somewhat important **18%**
- Not important **5%**
- No preference **4%**

If you plan on cycling to the new station, do you plan to utilise the proposed secure bike storage and/or bike parking?



- Sometimes **40%**
- Usually **31%**
- Always **28%**
- Never **1%**

Look and feel



What you told us about the local area's values and identity

The top themes we heard you value and see as the local identity:

- Natural landscape, such as the native grass and wetlands, and Davis Creek
- Connectivity to local shops, housing estates and community groups
- Diversity and local Aboriginal history, celebrating the multiculturalism in the area
- Sense of community and a family-friendly environment

Other things you mentioned:

- Proximity to other connections, such as public transport
- Development and growth of the area

Examples of comments about what you value

"Reflect the area's multiculturalism through murals or patterns inspired by textiles or art forms from the community's diverse cultures."

"I think the station should reflect the current landscape, look at things like the grass plains."

How you want to see your ideas reflected in the station design

We asked you how your ideas could be reflected in the new station precinct. The top themes were:

- Trees and vegetation
- Bright colours
- Sustainable materials
- Local artwork

We also heard that you'd like to see your ideas reflected by showcasing Aboriginal cultural themes and modern design and structures.

What you told us about station layout and functionality

We asked you what layouts and functions you like about other stations on the Geelong Line, or across Victoria. From more than 300 responses, the top themes were:

- Easy access to the platforms
- Sheltered waiting areas, including covered areas on the platform
- Bus interchanges and connectivity with other PTV services
- Adequate commuter parking
- Pedestrian access around the station precinct

Examples of comments about station layout and functionality

"Direct interchange at more stations for buses, and bus service times need to be reworked to actually line up with rail services."

"Stations could be improved by adding more sheltered areas spaced throughout the platform to protect passengers from weather."

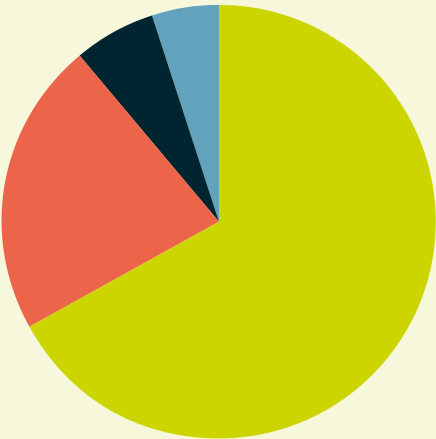


West Tarneit Station site investigations.

Landscaping

We asked you how important landscaping in the station precinct is to you. We also asked you what type of plants you'd like to see.

How important to you is introducing landscaping in the precinct?



- Very important **67%**
- Somewhat important **22%**
- I don't have a preference **6%**
- Not important **5%**

Considering the examples above, what type of vegetation would you prefer?



- Mix of each **26%**
- Trees **23%**
- Flowering plants **23%**
- Low and ground level **16%**
- Grasses **12%**

Examples of landscaping options at West Tarneit Station



What else you told us

To help us understand what's important to you in more detail, we invited you to share any additional thoughts or feedback you have about the project.

Many of the responses were about items outside the scope and funding for the new West Tarneit Station.

All of your feedback, however, has been captured and sent to the project specialists, as well as our partners at the Department of Transport and Planning and V/Line.

Here are the most frequently mentioned key themes from this feedback.

	Good connectivity	You told us you'd like to see good walking and cycling connections within the new station precinct that are safe, efficient and connected to local destinations.
	Vehicle access and commuter parking	We received feedback that you'd like to see good vehicle access and commuter parking at West Tarneit Station. You told us the commuter parking at Tarneit Station fills up quickly and that the precinct is congested at times, due to limited vehicle entry/exit points.
	Landscaping	You told us you would like plenty of landscaping and trees as part of the station design, with usable community spaces.
	Precinct design	We received feedback regarding alternative and additional design ideas for West Tarneit Station precinct, including designing it to be simple and functional.
	Network upgrades	You told us you'd like to see more frequent train services on the Geelong Line and an increase in bus services around the area.
	Improved road infrastructure	You told us that you'd like to see improved road infrastructure to make journeys through the project area easier. A number of comments mentioned congestion on nearby roads and intersections.
	Station amenities	You told us that you'd like to see a number of additional station amenities included in the design, such as toilets and a waiting area.

View of the new West Tarneit Station entrance, looking to the northwest. Artist impression only, subject to change.



Next steps

Thank you to everyone who provided feedback.

We are using your feedback to help inform the final designs for the project.

We'll release the final designs soon and you'll have the opportunity to ask questions about the designs and chat to the project team.



Stay up to date

Be the first to know about project information by signing up for regular updates.

Sign up for SMS updates by texting **WEST TARNEIT** to **0427 840 967**.

Sign up for email updates at levelcrossings.vic.gov.au/subscribe

If you'd like to talk to us about the project, call **1800 105 105** or send an email to contact@levelcrossings.vic.gov.au.

Project timeline



2023

- Early development and planning work
- Site investigations



Late 2024

- Concept designs released
- Community engagement



Early–mid 2025

- Final designs released
- Further community engagement



2025

- Major construction commences



2026

- Station opens
- Major construction complete






* Timeline subject to change.

levelcrossings.vic.gov.au

contact@levelcrossings.vic.gov.au



For languages other than
English, please call 9209 0147.

1800 105 105 (call anytime)     

Please contact us if you would like this information in an
accessible format. If you need assistance due to a hearing
or speech impairment, visit [relay.vic.gov.au](https://www.relay.vic.gov.au)

