



STATE LIBRARY STATION COMMUNITY REFERENCE GROUP

CROSS YARRA PARTNERSHIP
THURSDAY 27 AUGUST 2020



Construction partner:





STATE LIBRARY STATION COMMUNITY REFERENCE GROUP

Jodie Barrington, CBD Precinct Lead, CYP D&C

Melinda Kelly, State Library Station Stakeholder Engagement Manager, CYP D&C

Shane Reynolds, CBD Sustainability, CYP D&C



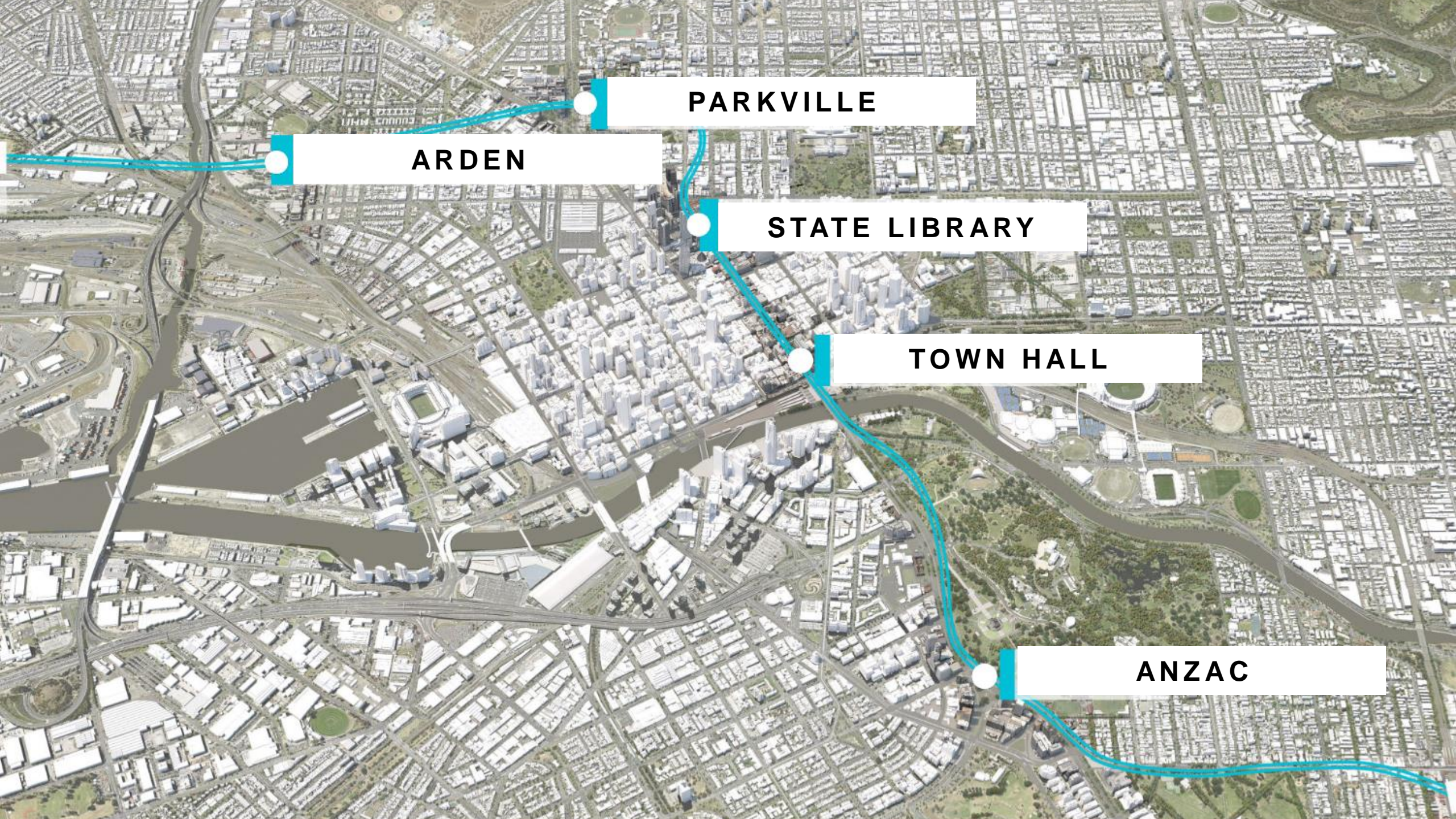
Construction partner:



AGENDA

1. Project overview
2. State Library Station update
3. General feedback and items for future discussion
4. Sustainability update

PROJECT OVERVIEW



PARKVILLE

ARDEN

STATE LIBRARY

TOWN HALL

ANZAC

TOWN HALL



Deep beneath Swanston Street two roadheaders have been simultaneously excavating the main station bench from City Square towards Federation Square, earlier this week they completed bench 1.

ARDEN

Between the Western portal and Arden, cross passages 2 and 4 are now fully excavated, with the team currently in the process of breaking in at cross passage 1.

At Arden Station, work to construct the concourse, roof slabs and inner walls (above concourse) continue.



PARKVILLE



Two tunnel boring machines (TBMs) have been tunnelling from the Arden Station site towards the Parkville Station site. The first TBM is travelling near Grattan Street west and is expected to 'break through' into the Parkville Station box at Grattan Street east in late August. The second TBM is scheduled to reach Flemington Road at the end of August.

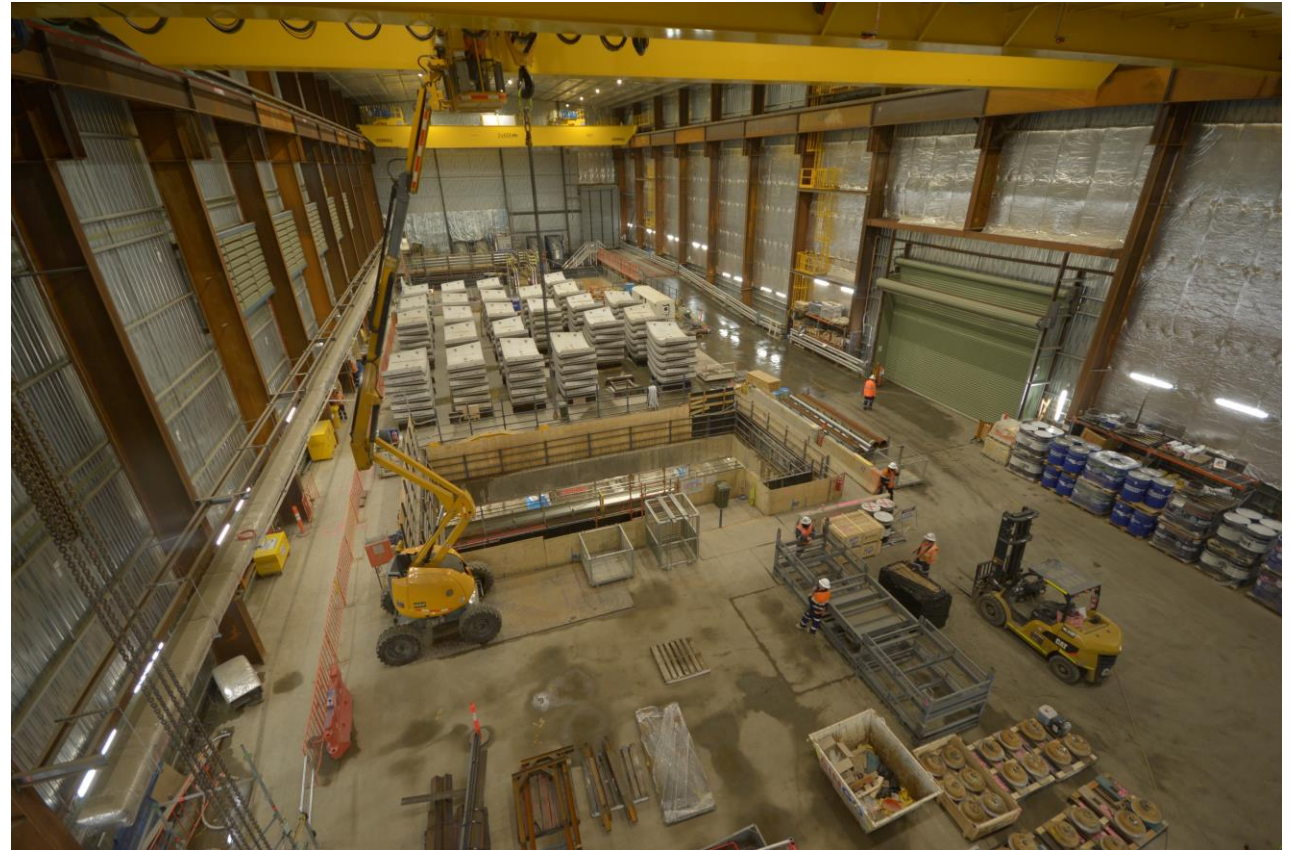
On average, TBMs move around 10 metres every 24 hours. During tunnelling, noise, vibration and ground movement are monitored and managed in line with strict Environmental Performance Requirements (EPRs).

ANZAC

Inside the acoustic shed, segments are being stored before being lowered into the north box and transported to the TBMs.

The remaining 5 metres of excavation will occur 3.5 metres below the Anzac Station roof, above the two tunnels.

Construction of the station entrance from the Shrine of Remembrance has started, with piling works now underway.

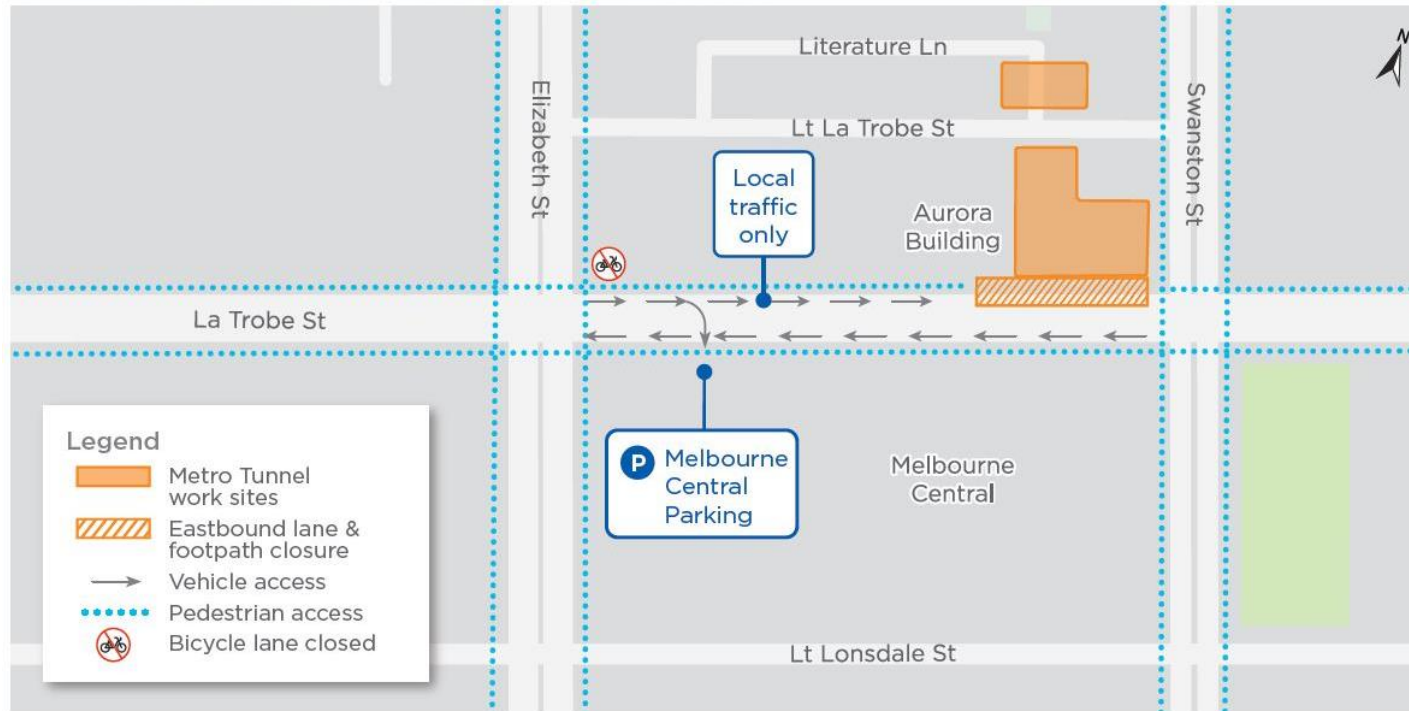


STATE LIBRARY STATION UPDATE



LA TROBE STREET UPDATE

LA TROBE STREET TEMPORARY TRAFFIC CHANGES

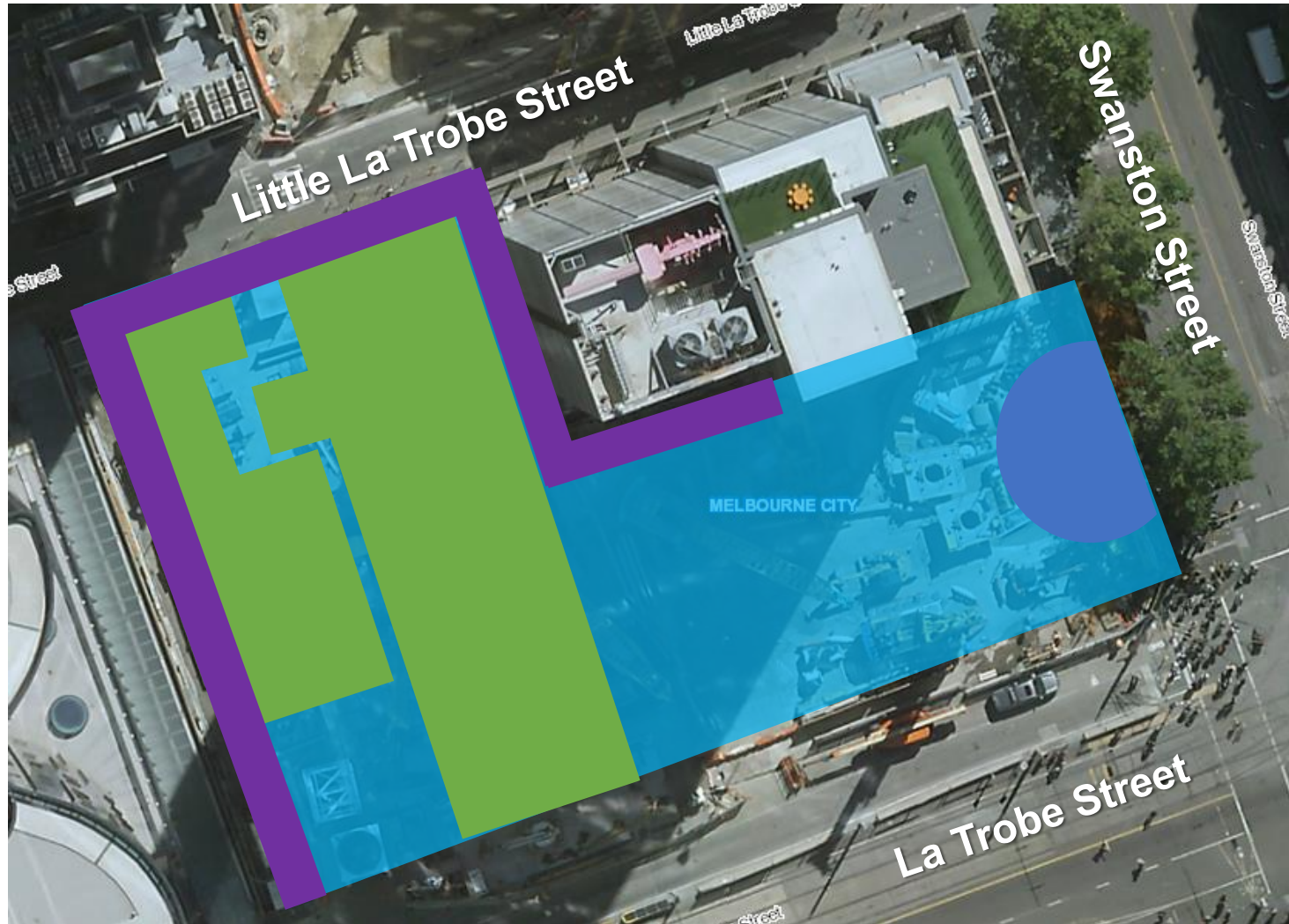


Temporary La Trobe Street eastbound lane closures

The eastbound lane on La Trobe Street will be closed during standard construction hours until Sunday 13 September 2020.

This closure will also be in place during the installation of the tower crane at the Little La Trobe Street site.

LA TROBE SITE PROGRESS



Perimeter piling

- 171 of 172 complete

Plunge columns

- 56 of 56 complete

La Trobe site



Pile trimming



Slab poured



LA TROBE STREET SITE UPDATE

Activity	Location	August	September	October	November	December	January
Perimeter piling and plunge column installation	Site						
Swanston Street concrete pump installation	Swanston Street						
Pile trimming	Site						
Slab works	Site						
Shaft excavation	Site						

LA TROBE STREET SITE UPDATE

Standard hours

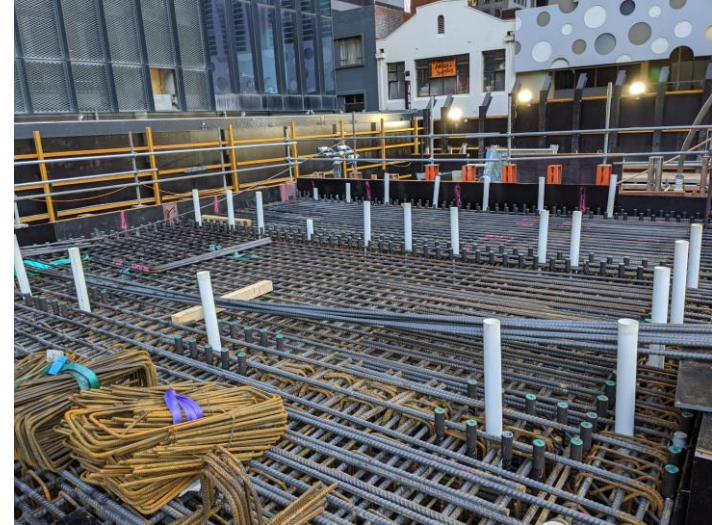
- Monday to Saturdays, 7am to 6pm

Concrete pours and minor works

- Monday to Fridays, 6pm to 10pm

Oversized deliveries

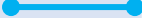
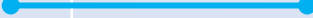
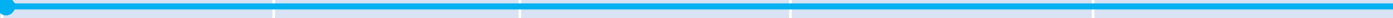
- 10pm to 7am, as required





LITTLE LA TROBE STREET UPDATE

LITTLE LA TROBE STREET SITE UPDATE

Activity	August	September	October	November	December	January
Tower crane installation						
Pedestrian link and site shed installation						
Shaft construction						

LITTLE LA TROBE SITE HOURS

Shaft construction

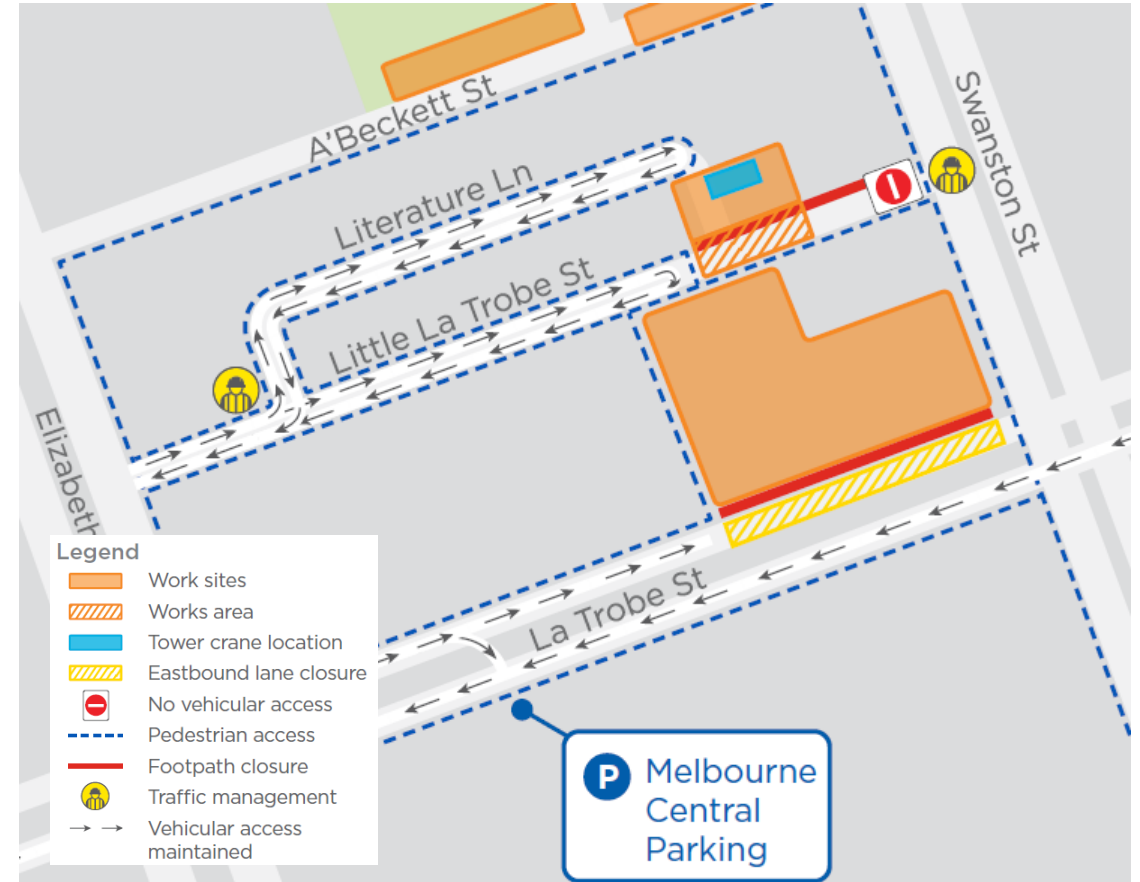
- Monday to Saturdays, 7am to 6pm

Minor works

- Monday to Fridays, 6pm to 10pm (if required)

Oversized deliveries and tower crane assembly works

- 7am Thursday 27 August to 10pm Saturday 29 August
- Sunday 30 August (if required)





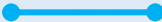
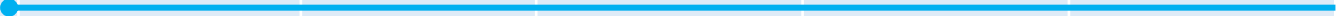
FRANKLIN STREET WEST UPDATE

SHAFT CONSTRUCTION COMPLETE





FRANKLIN STREET WEST SITE UPDATE

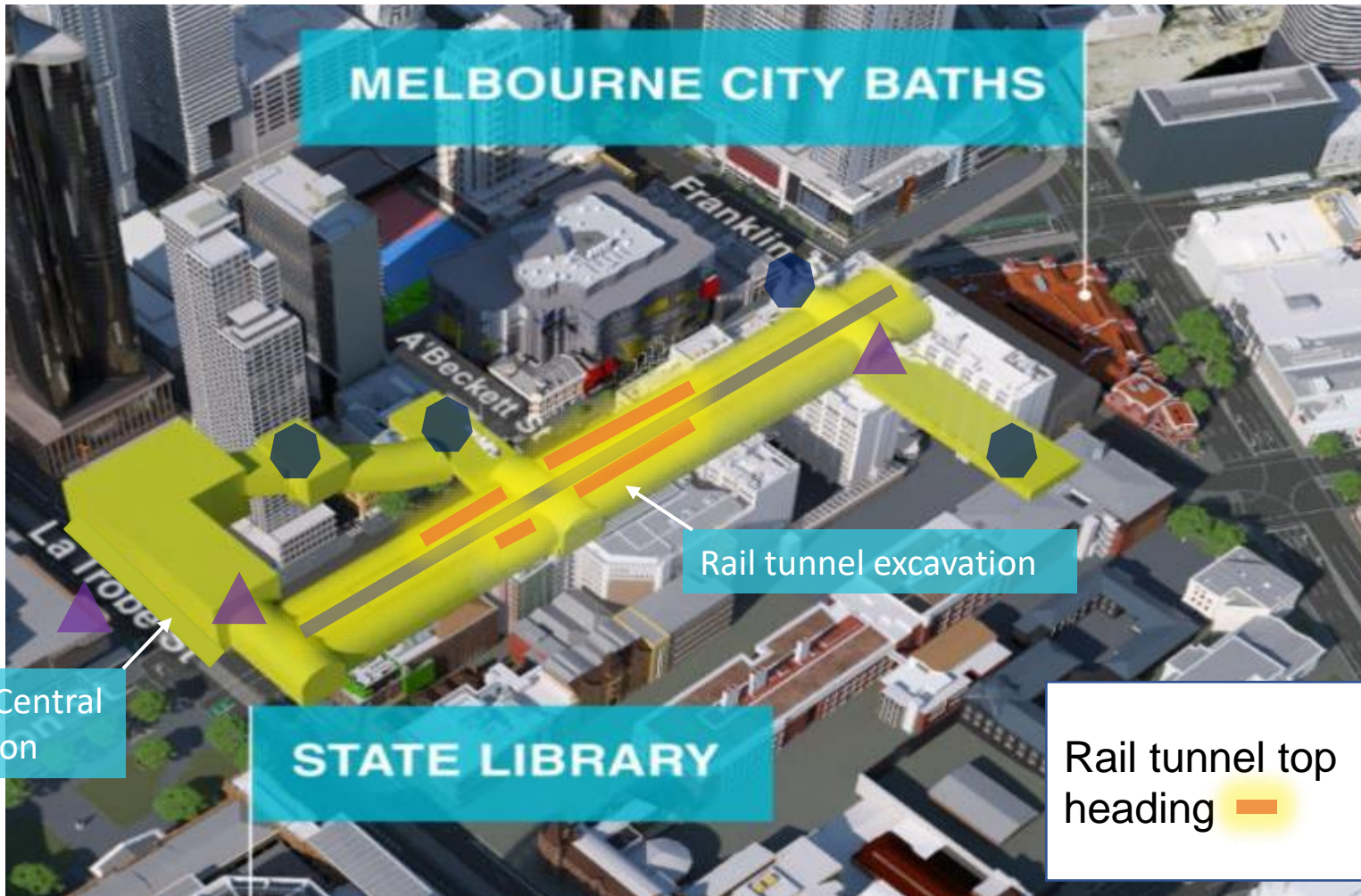
Activity	Location	August	September	October	November	December	January
Plant demobilisation	Site						
Tunnelling support works and permanent structure build	Site						

TUNNELLING WORKS

Architectural
concrete
elements
ongoing

Steel column
installation
complete

Future Melbourne Central
passenger connection



**Rail tunnel
excavation**
More than 170
metres complete



Two roadheaders
are being used



A'BECKETT AND FRANKLIN EAST

A'Beckett Street site

Tunnelling works

- 24/7

There will be increased truck movements to support the removal of excavated material.

Franklin Street sites

Permanent structures and lining works

- 24/7

TBM TUNNELLING

ARDEN STATION TO PARKVILLE



QUESTIONS

SUSTAINABILITY UPDATE

CYP D&C SUSTAINABILITY APPROACH

‘CYP D&C have adopted environmental, social and economic sustainability principles to create infrastructure that connects our communities and delivers a legacy for present and future generations’



SUSTAINABILITY OBLIGATIONS

Infrastructure Sustainability (IS)

- Rating - 84

Green Star Ratings

- 5★ at each station

Contract Deliverables

Specific requirements beyond rating tool requirements



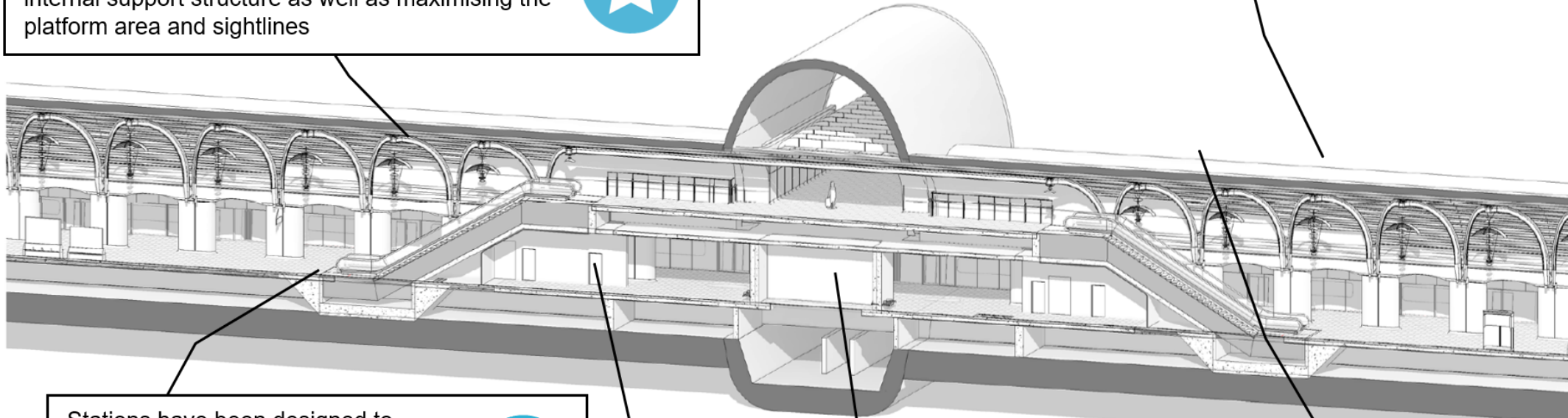
SUSTAINABILITY OUTCOMES

SUSTAINABILITY IN STATION DESIGN

As an Australian first, the innovative trinocular design minimises excavation volumes and the size of the internal support structure as well as maximising the platform area and sightlines



Water sensitive urban design features included at the stations will help to reduce water pollution levels



Stations have been designed to maximise thermal comfort whilst also providing increased rates of outdoor air to platforms and concourses



Stormwater collected from council stormwater mains, treated, and reused for toilet flushing and other non-potable demands



Water efficient fixtures and fittings



Integration of public art will create a sense of place and identity for the precinct



SUSTAINABILITY IN STATION DESIGN

Biophilic design initiatives have been incorporated at stations. This includes elements such as natural shapes, forms, and patterns; environmental features, light and space and place-based relationships.



Energy efficient fixtures, fittings and plug-in electrical equipment



Station heating and cooling system includes allowances for increased temperatures based on climate change



Variable step speeds and regenerative drive systems on escalators



The Town Hall and State Library Stations will have direct underground connectivity to Flinders Street Station and Melbourne Central, respectively.



WASTE AND RECYCLING



MATERIALS



SUPPLY CHAIN



CONCEPT IMAGE

green building council australia



Custom (Melbourne Metro Rail Authority)
2020

Design Review

STATE LIBRARY
STATION – PLATFORM

QUESTIONS?