



TOWN HALL STATION COMMUNITY REFERENCE GROUP

CROSS YARRA PARTNERSHIP
THURSDAY 27 AUGUST 2020



Construction partner:





TOWN HALL STATION COMMUNITY REFERENCE GROUP

Jodie Barrington, CBD Precinct Lead, CYP D&C

Blythe Chidgey, Town Hall Station Stakeholder Engagement Manager, CYP D&C

Mick Lo Monaco, CBD Precinct Sustainability Lead, CYP D&C



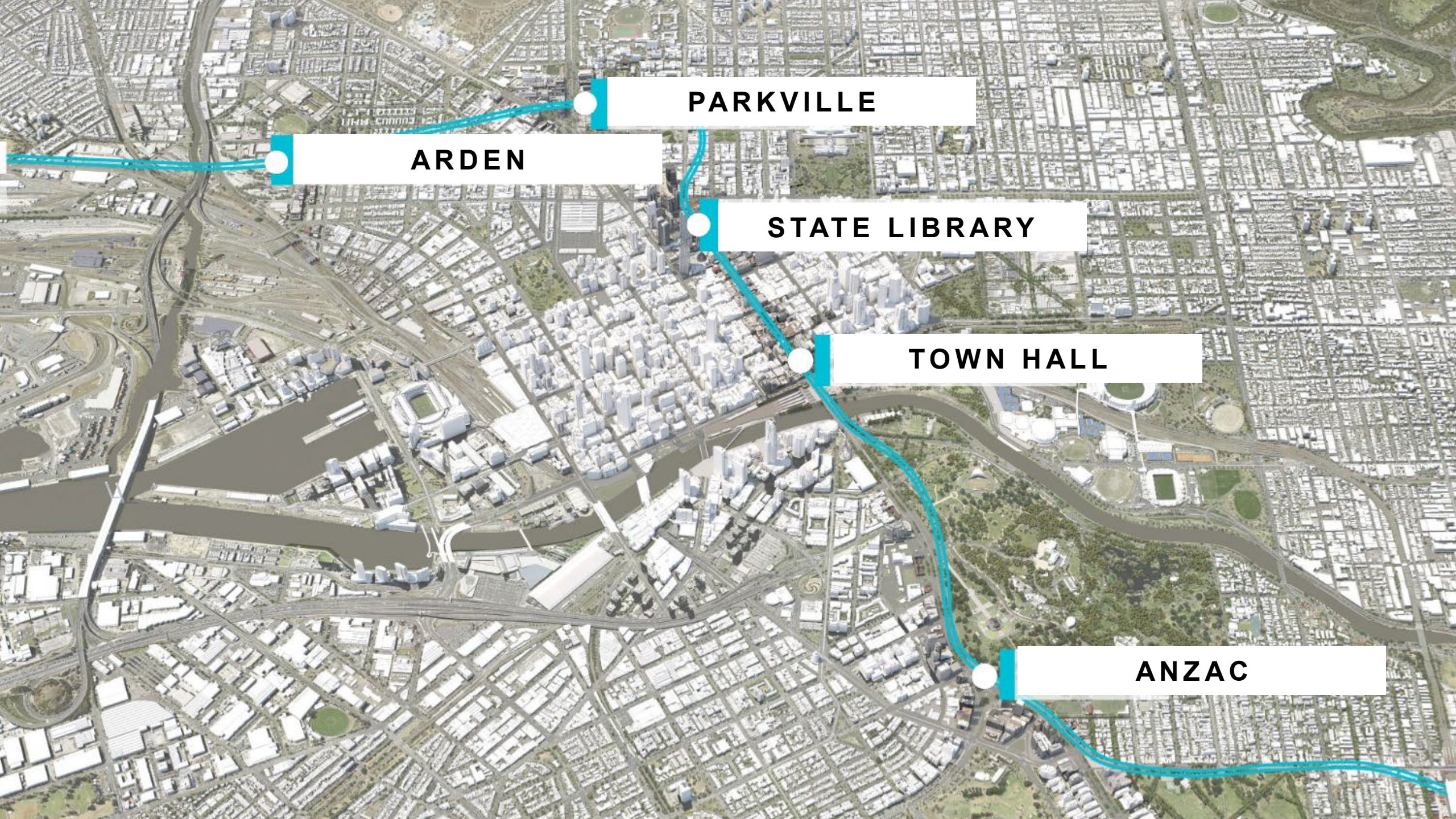
Construction partner:



AGENDA

1. Project overview
2. Town Hall Station update
3. Sustainability update

PROJECT OVERVIEW



ARDEN

PARKVILLE

STATE LIBRARY

TOWN HALL

ANZAC

STATE LIBRARY

Deep under Swanston Street, two roadheaders have excavated more than 170m of the platform rail tunnels either side of the State Library Station central cavern.

Above ground, another milestone was achieved at the Little La Trobe Street site, the completion of the ground floor slab. A tower crane will be installed at the site this weekend.



ARDEN

Between the Western portal and Arden, cross passages 2 and 4 are now fully excavated, with the team currently in the process of breaking in at cross passage 1.

At Arden Station, work to construct the concourse, roof slabs and inner walls (above concourse) continue.



Arden Station continues to take shape.

PARKVILLE



Two tunnel boring machines (TBMs) have been tunnelling from the Arden Station site towards the Parkville Station site. The first TBM is travelling near Grattan Street west and is expected to 'break through' into the Parkville Station box at Grattan Street east in late August. The second TBM is scheduled to reach Flemington Road at the end of August.

On average, TBMs move around 10 metres every 24 hours. During tunnelling, noise, vibration and ground movement are monitored and managed in line with strict Environmental Performance Requirements (EPRs).

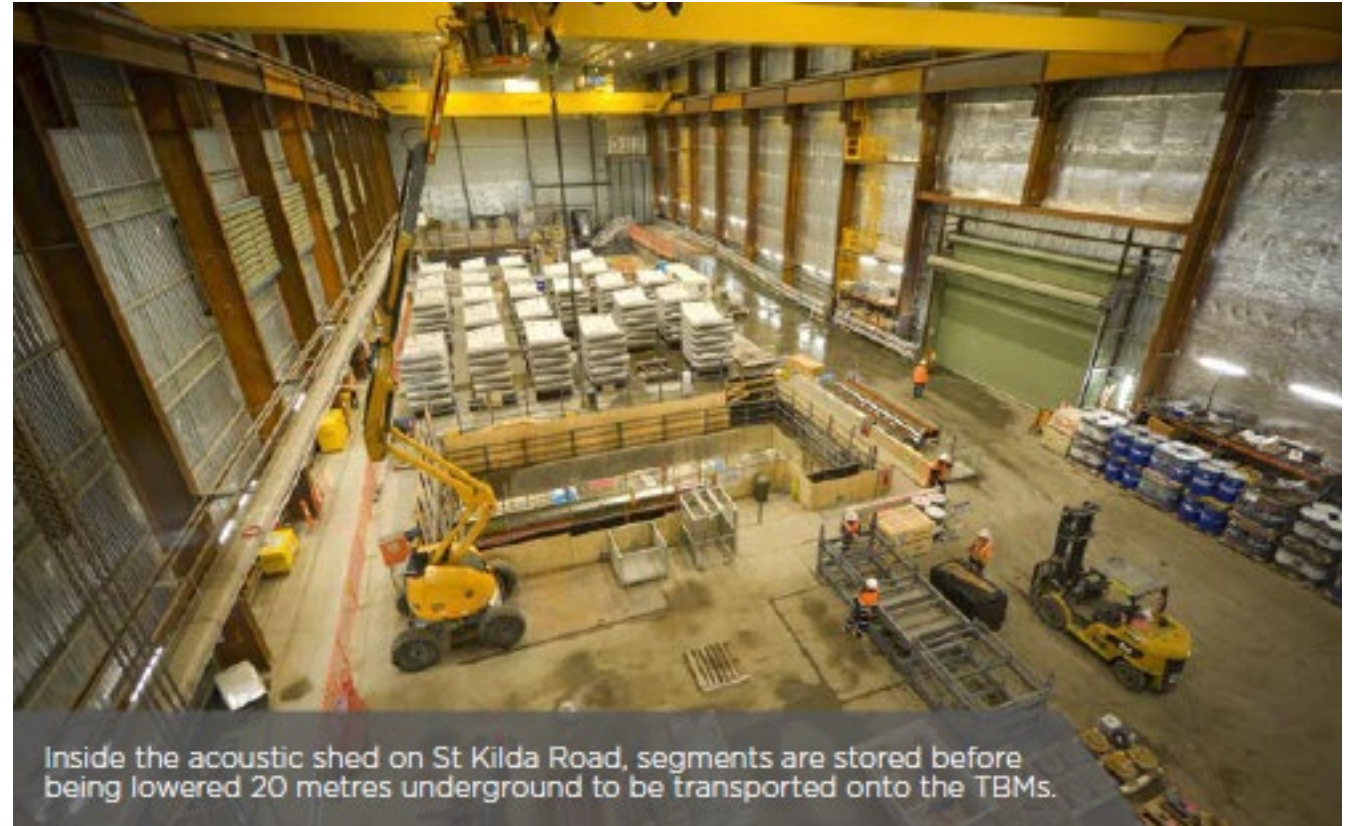
ANZAC

With TBMs Alice and Millie on the approach to South Yarra, the Anzac Station site continues to support tunnelling operations.

Inside the acoustic shed, segments are being stored before being lowered into the north box and transported to the TBMs.

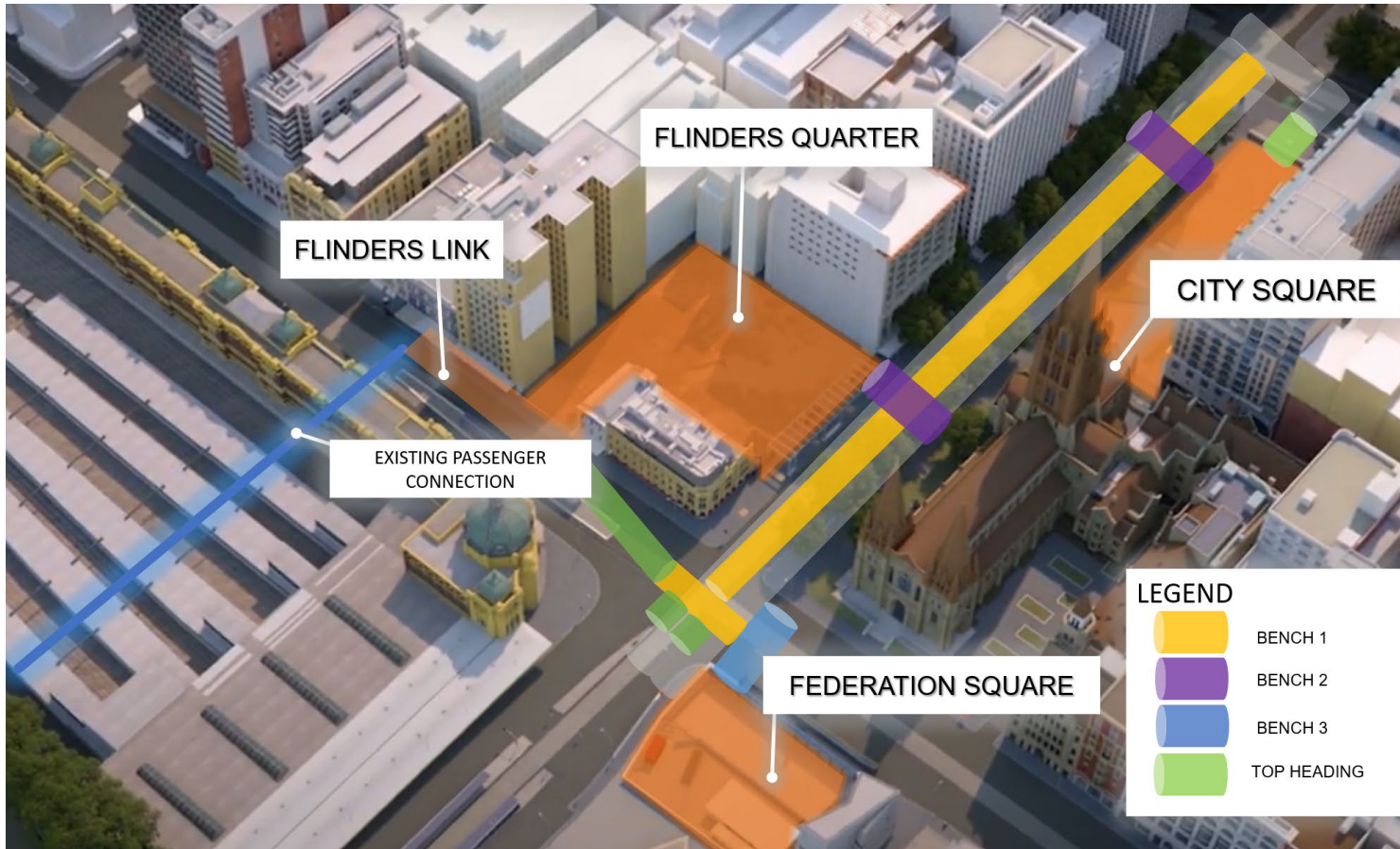
The remaining 5 metres of excavation will occur 3.5 metres below the Anzac Station roof, above the two tunnels.

Construction of the station entrance from the Shrine of Remembrance has started, with piling works now underway.



Inside the acoustic shed on St Kilda Road, segments are stored before being lowered 20 metres underground to be transported onto the TBMs.

ROADHEADER TUNNELLING



Excavation of the City Square fire egress adit has progressed more than 20 metres (travelling north)

The main station cavern bench 1 from City Square towards Federation Square was completed earlier this week

TOWN HALL STATION UPDATE



FLINDERS QUARTER

FLINDERS QUARTER – SHAFT A

Flinders Quarter tunnelling and excavation

- 24 hours, Monday to Sunday

Activity	Aug	Sep	Oct	Nov	Dec	Jan
Roadheader tunnelling						

FLINDERS QUARTER- SHAFT B

Activity	Aug	Sep	Oct	Nov	Dec	Jan
Excavation						
Top down construction						

FLINDERS QUARTER – OUT OF HOURS WORKS

Deliveries (ongoing)

- Monday to Saturday, 5am to 7am
- Monday to Friday, 6pm to 10pm

Steel fixing, waterproofing and formwork installation (Shaft B)

- Monday to Friday, 7am to 10pm
- Sundays, 8am to 4pm

Permanent concrete structure installation (Shaft B)

- Monday to Friday, 7am to 10pm
- Saturdays, 7am to 1pm
- Intermittently, from 6pm to 7am

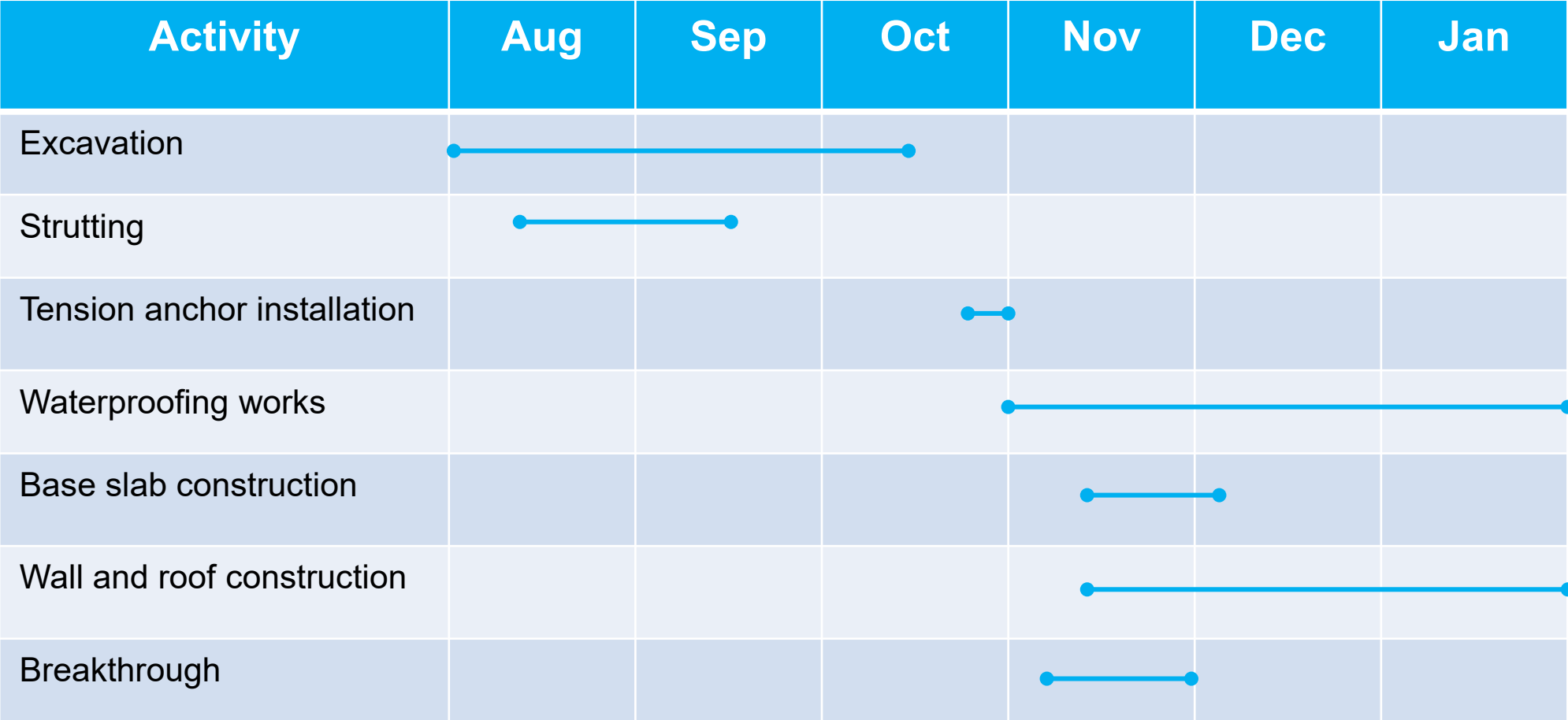
Tunnelling and excavated material removal (Shaft A)

- Monday to Sunday, 24 Hours
- 7am to 10pm - Including the use of excavators and a tower crane



FLINDERS LINK

FLINDERS LINK WORKS UPDATE





FEDERATION SQUARE

FEDERATION SQUARE WORKS UPDATE



Federation Square tunnelling and excavation

- 24 hours, Monday to Sunday

Activity	Aug	Sep	Oct	Nov	Dec	Jan
Excavation						
Roadheader tunnelling						



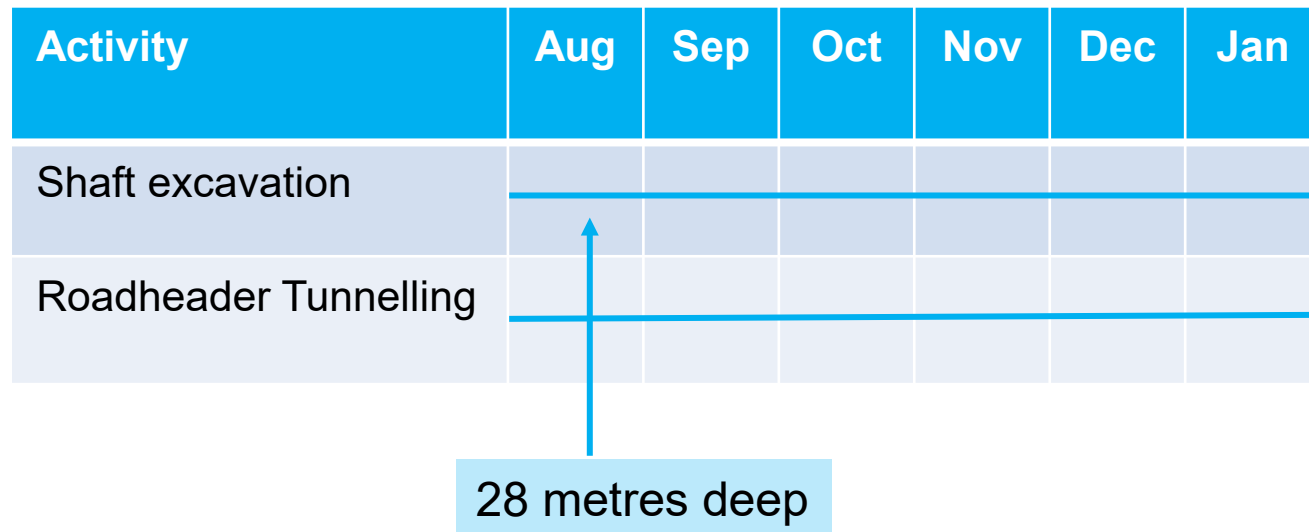
CITY SQUARE



CITY SQUARE WORKS UPDATE

City Square tunnelling and excavation

- 24 hours, Monday to Sunday



TBM TUNNELLING UPDATE

ARDEN STATION TO PARKVILLE



QUESTIONS

SUSTAINABILITY



Presenter: Mick Lo Monaco (Town Hall)

Shane Reynolds (State Library)



CYP D&C SUSTAINABILITY APPROACH

‘CYP D&C have adopted environmental, social and economic sustainability principles to create infrastructure that connects our communities and delivers a legacy for present and future generations’



SUSTAINABILITY OBLIGATIONS

Infrastructure Sustainability (IS)

- Rating - 84

Green Star Ratings

- 5★ at each station

Contract Deliverables

Specific requirements beyond rating tool requirements



ISCA Infrastructure
Sustainability
Council of Australia



Developed by the
Green Building Council of Australia



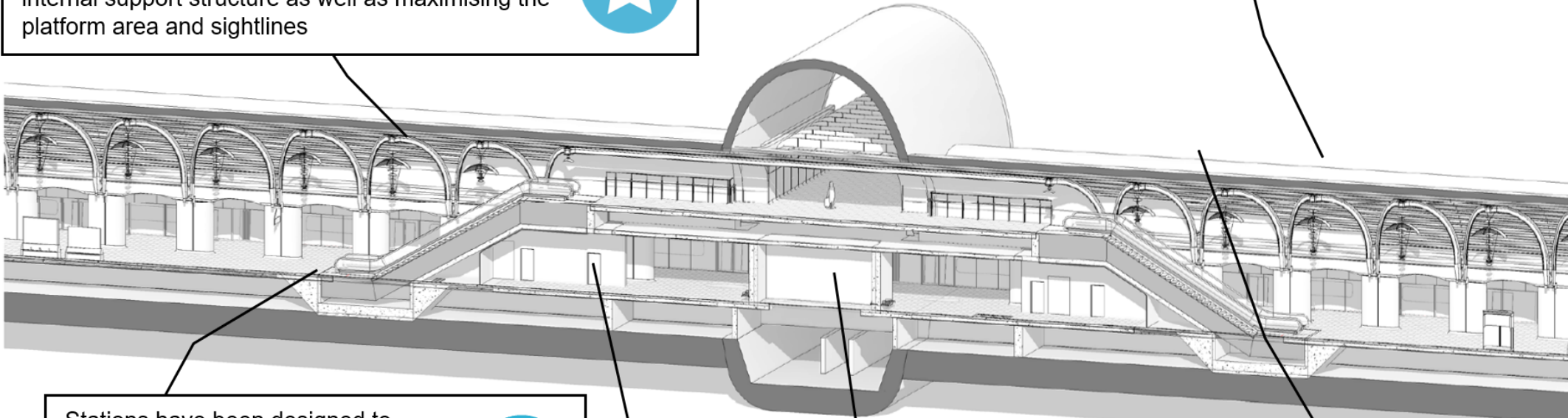
SUSTAINABILITY OUTCOMES

SUSTAINABILITY IN STATION DESIGN

As an Australian first, the innovative trinocular design minimises excavation volumes and the size of the internal support structure as well as maximising the platform area and sightlines



Water sensitive urban design features included at the stations will help to reduce water pollution levels



Stations have been designed to maximise thermal comfort whilst also providing increased rates of outdoor air to platforms and concourses



Stormwater collected from council stormwater mains, treated, and reused for toilet flushing and other non-potable demands



Water efficient fixtures and fittings



Integration of public art will create a sense of place and identity for the precinct



SUSTAINABILITY IN STATION DESIGN

Biophilic design initiatives have been incorporated at stations. This includes elements such as natural shapes, forms, and patterns; environmental features, light and space and place-based relationships.



Energy efficient fixtures, fittings and plug-in electrical equipment



Station heating and cooling system includes allowances for increased temperatures based on climate change



Variable step speeds and regenerative drive systems on escalators



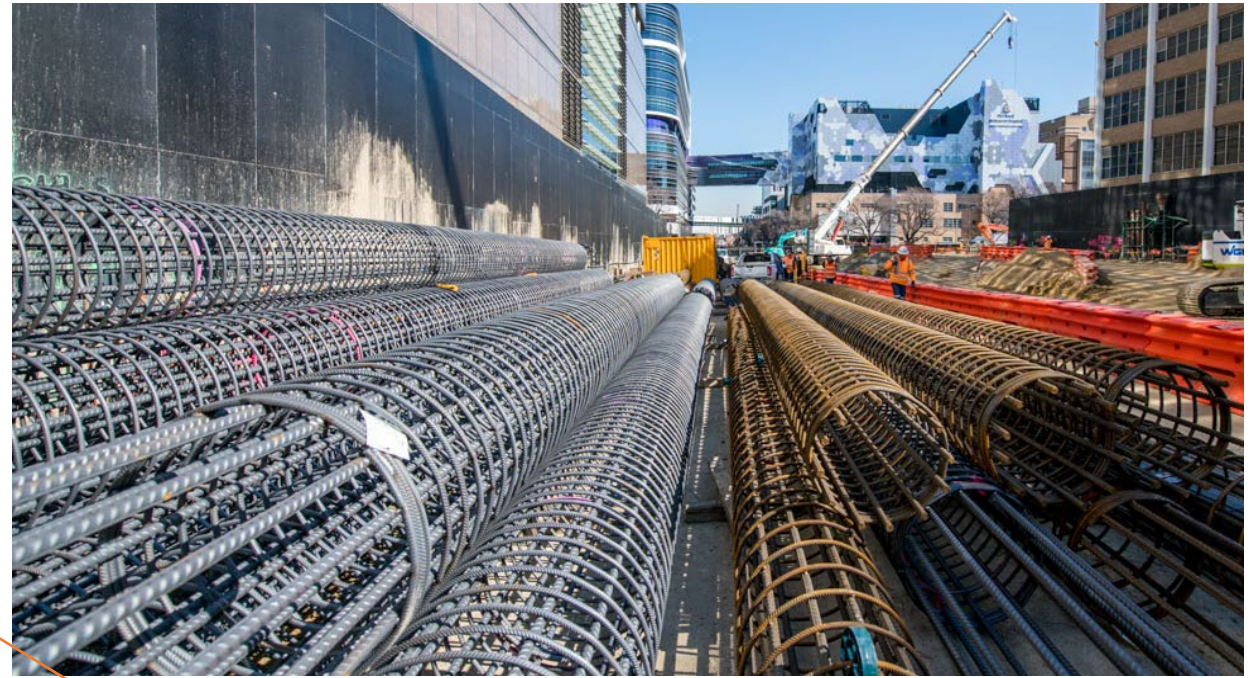
The Town Hall and State Library Stations will have direct underground connectivity to Flinders Street Station and Melbourne Central, respectively.



WASTE AND RECYCLING



MATERIALS



SUPPLY CHAIN



CONCEPT IMAGE

green building council australia



Custom (Melbourne Metro Rail Authority)
2020

Design Review

STATE LIBRARY
STATION – PLATFORM

QUESTIONS?