

# Connecting Melbourne Airport to our Rail network

Project Update 2020



Australian Government

**BUILDING OUR FUTURE**



# Introduction

The Melbourne Airport Rail project will deliver rail to the airport for the very first time in Victoria.

Building Melbourne Airport Rail will be a massive job working in a complex rail environment. The project will deliver significant benefits including supporting up to 8000 jobs during construction and putting Melbourne on par with other cities in Australia and across the world that have airport rail services.

The Australian and Victorian governments are committed to delivering a rail service that connects people from the airport to where they need to go — be that work, home or Victoria's major regional centres.

That's why we are connecting Melbourne Airport Rail into the Metro Tunnel, providing passengers with a 10-minute turn-up-and-go service from Melbourne Airport and an under 30-minute continuous journey into the CBD, connecting seamlessly into the existing metropolitan and regional network.

This document provides an update on key elements of the project, including:

- the Melbourne Airport Rail route and how it will connect into the existing rail network
- benefits and travel times
- construction timeframes
- work undertaken to date
- next steps.

# Background

## The Melbourne Airport Rail project

Melbourne Airport Rail is a transformational public transport project connecting Melbourne Airport with a rail service for the first time. The Australian and Victorian governments have committed \$5 billion each to deliver Melbourne Airport Rail, which will run from Melbourne's CBD to Melbourne Airport via Sunshine.

Rail Projects Victoria (RPV) is delivering Melbourne Airport Rail and is responsible for development of the project reference design, site investigations, stakeholder engagement, planning approvals and procurement, through to construction delivery and project commissioning.

RPV is part of the Major Transport Infrastructure Authority (MTIA) which was established to oversee major transport infrastructure projects in Victoria.

## Sunshine Route

After detailed consideration of several options, the Sunshine Route was selected for a number of reasons including:

- superior connections to more areas of Melbourne through its integration with the Metro Tunnel
- superior connections to regional Victoria through a Sunshine interchange
- earlier deliverability at a lower cost.

# Melbourne Airport Rail through the Metro Tunnel



The Metro Tunnel will be completed prior to Melbourne Airport Rail.

The Metro Tunnel will create a new end-to-end rail line from Sunbury in the west to Cranbourne and Pakenham in the south-east, with high capacity trains and five new underground stations.

The Metro Tunnel creates capacity for an extra **500,000** train passengers across the network in peak periods every week.

# Route update

Building on the 2018 decision to operate Melbourne Airport Rail via Sunshine, RPV has undertaken technical, operational and economic analysis to determine a route that delivers the best solution for the majority of Victorians and visitors to the state.

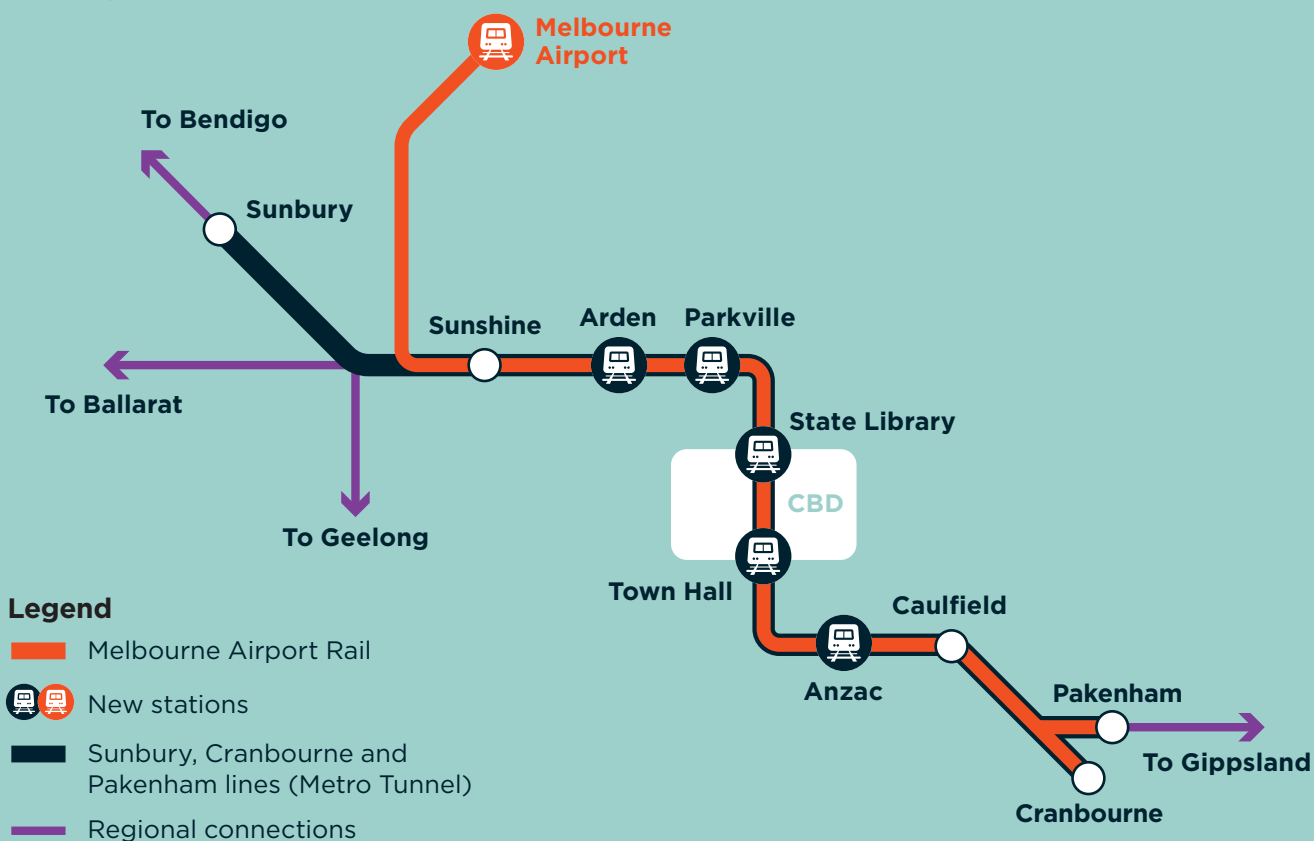
The Victorian Government has identified the following key elements as the optimal foundations for the project.

1

**Melbourne Airport Rail services will run via Sunshine Station directly through the new Metro Tunnel**

2

**There will be a new premium station at Melbourne Airport**



# Connectivity

Melbourne Airport Rail services will maximise airport connectivity to Victoria's metropolitan and regional rail networks.

## Better connections

### To the CBD and suburbs

Connecting to the Metro Tunnel provides better access to Melbourne's CBD and suburbs, giving passengers more choice about how they travel.

Thirty stations will have direct access to Melbourne Airport without changing trains, with most other passengers only needing to change once.

Town Hall and State Library stations provide direct links to Flinders Street and Melbourne Central stations and to Swanston Street trams — the heart of Melbourne's tram network.

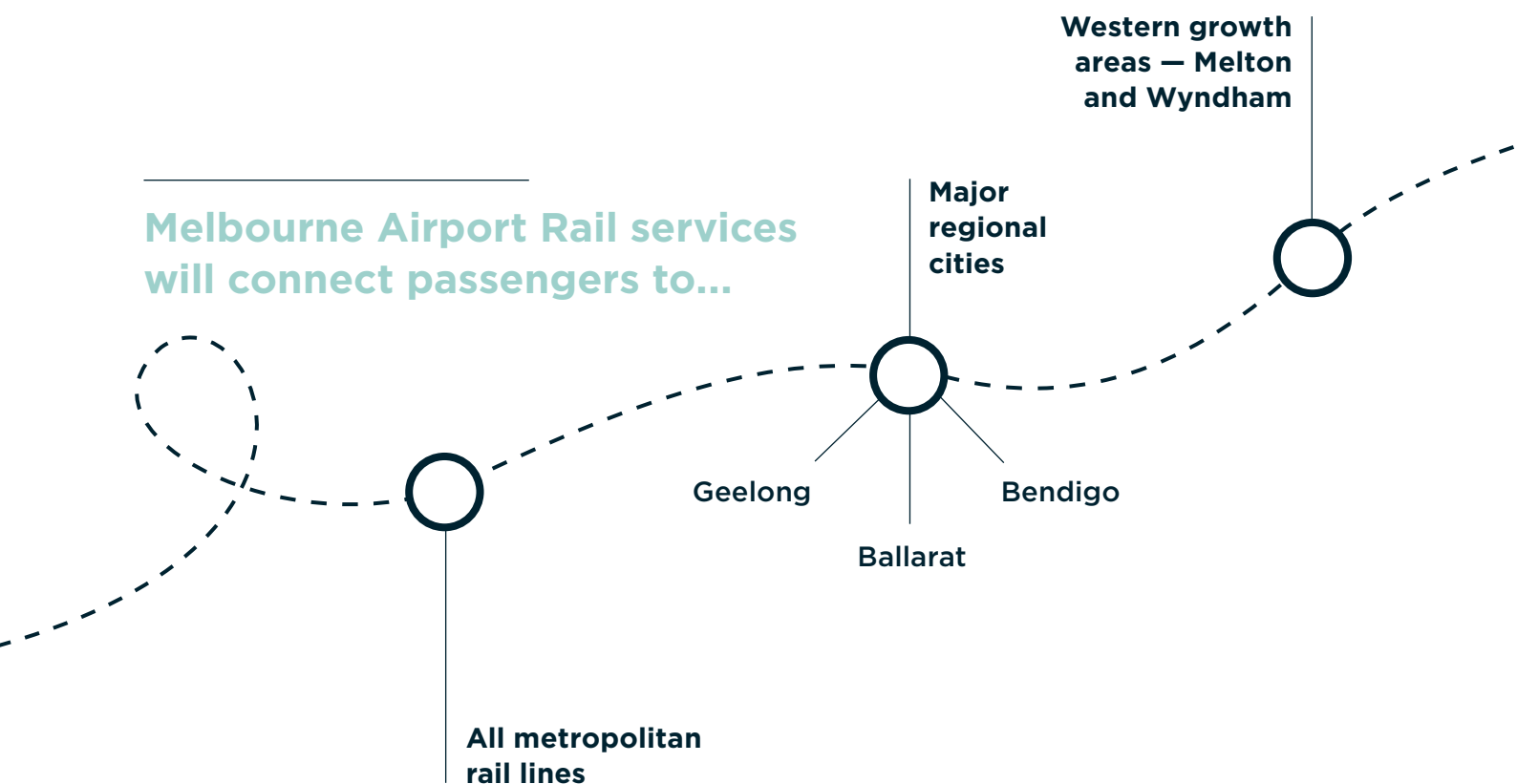
### To the regions and growth areas

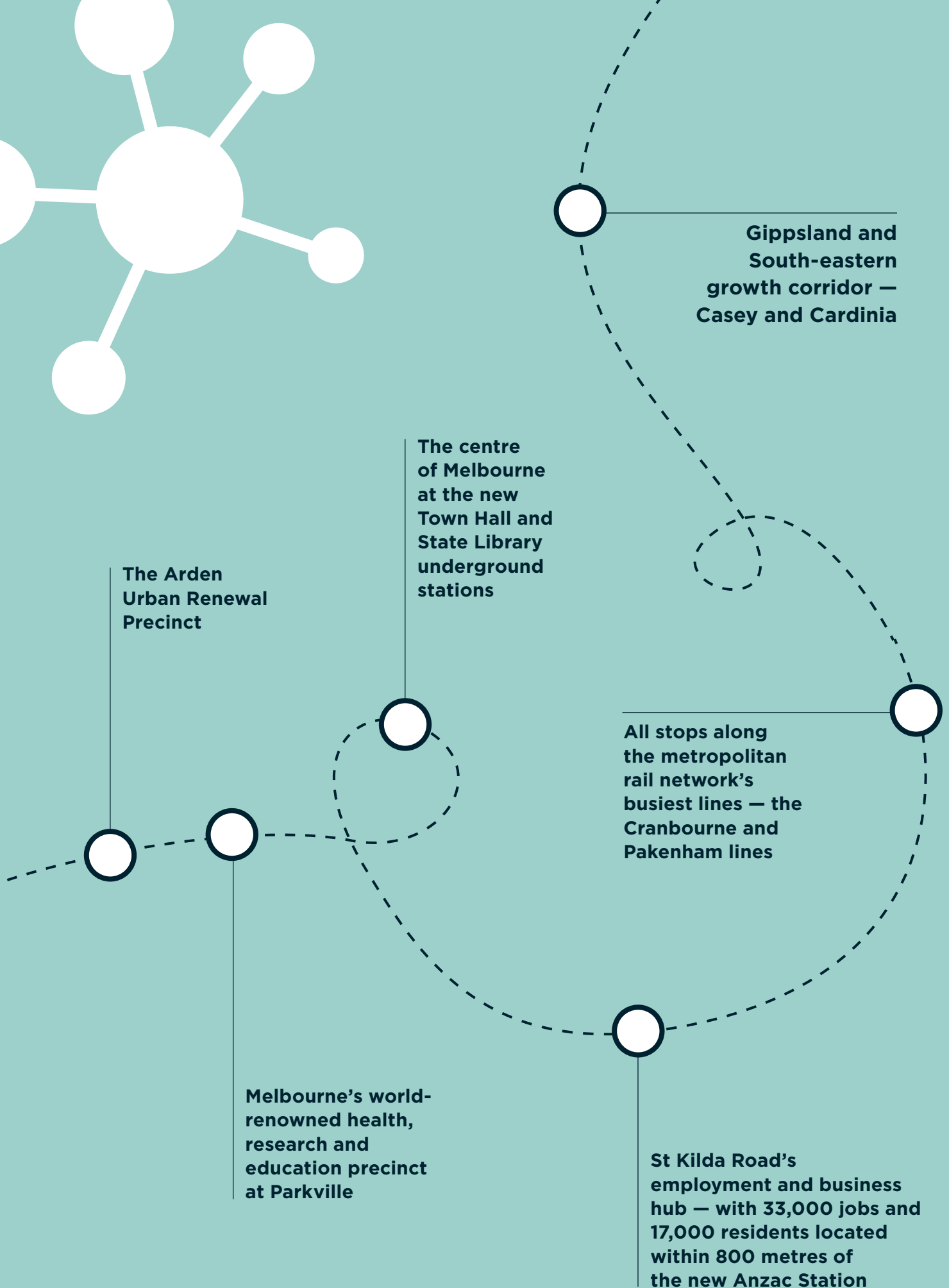
Passengers on the Geelong, Ballarat and Bendigo lines, as well as from the growth areas to Melbourne's west around Melton and Wyndham, will be able to switch between regional and airport services at Sunshine. Gippsland and the south-eastern growth corridors of Casey and Cardinia will also connect directly to the airport via the Cranbourne and Pakenham lines and the Metro Tunnel.

### To employment and innovation hubs and Priority Precincts

Melbourne Airport Rail's integration with the Metro Tunnel provides enhanced connectivity for airport passengers to key health, research and education, development and employment precincts at Arden, Dandenong, Monash, Parkville, Sunshine and Werribee.

## Melbourne Airport Rail services will connect passengers to...





# Project delivery

Using the Metro Tunnel enables the earliest possible delivery of Melbourne Airport Rail.

Melbourne Airport Rail services will operate via the Metro Tunnel from 2029\*.

There will be no need for a new class of rolling stock to operate Melbourne Airport Rail services. The new fleet of High Capacity Metro Trains using the Metro Tunnel, and associated stabling and maintenance facilities, will be integrated with Melbourne Airport Rail operations.

Impacts during construction on both the existing rail network and communities in proximity of the rail corridor will be reduced when compared with alternative options.

Environmental impacts associated with delivery such as noise, dust and vibration are lessened due to the condensed construction footprint of the project.

Maintaining continuity and minimising disruption is achieved for both regional and metropolitan services, as the volume of works on the busiest and most complex section of tracks is significantly reduced.



\*Subject to relevant Victorian and Federal planning, environmental and other government approvals.



# Value for money



The Victorian and Australian governments have signed a joint agreement to build Melbourne Airport Rail and committed \$5 billion each in funding.

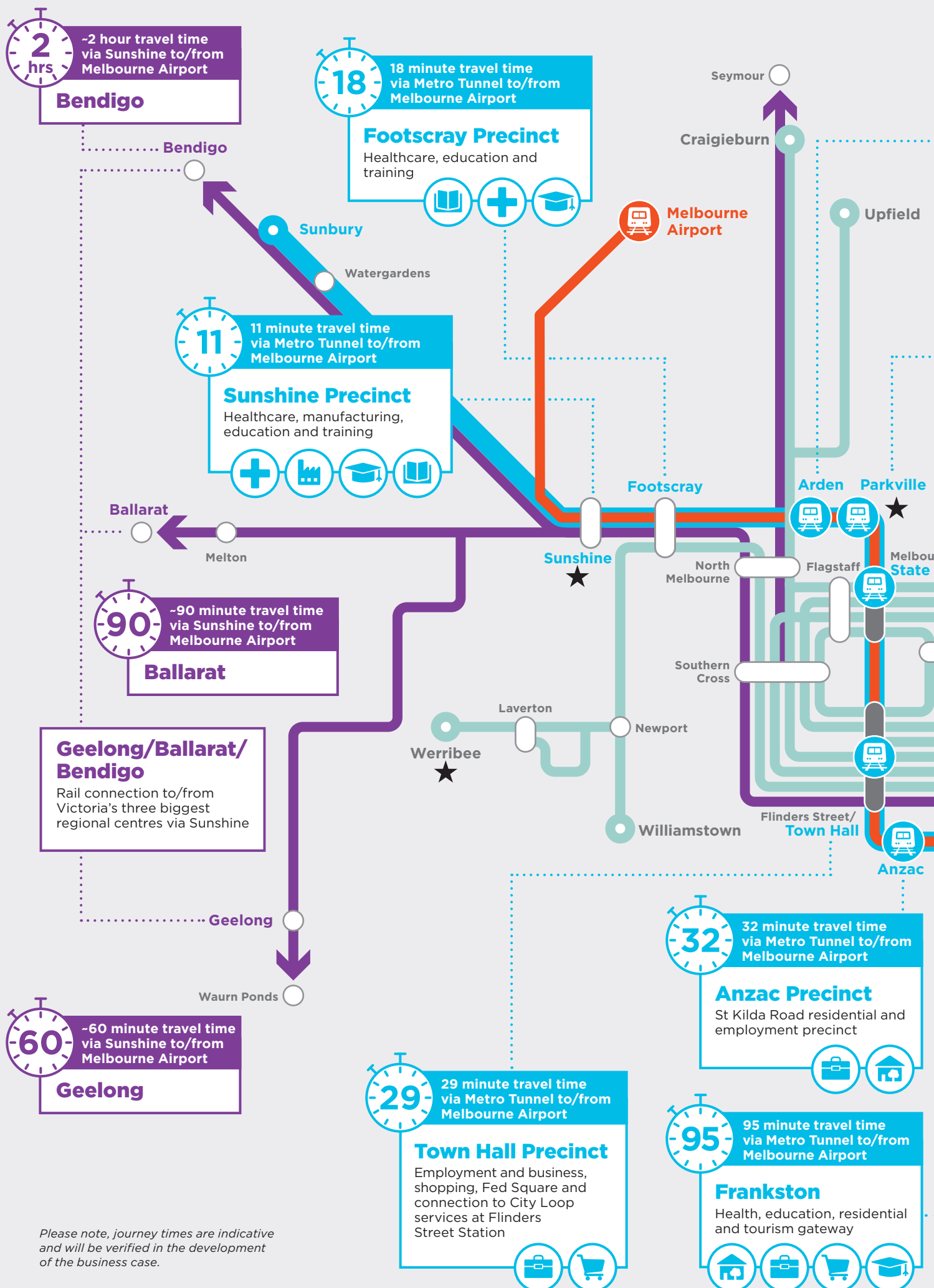
Detailed planning and development work is currently underway which will inform more detailed cost estimates.

The proposed project scope includes the following key elements:

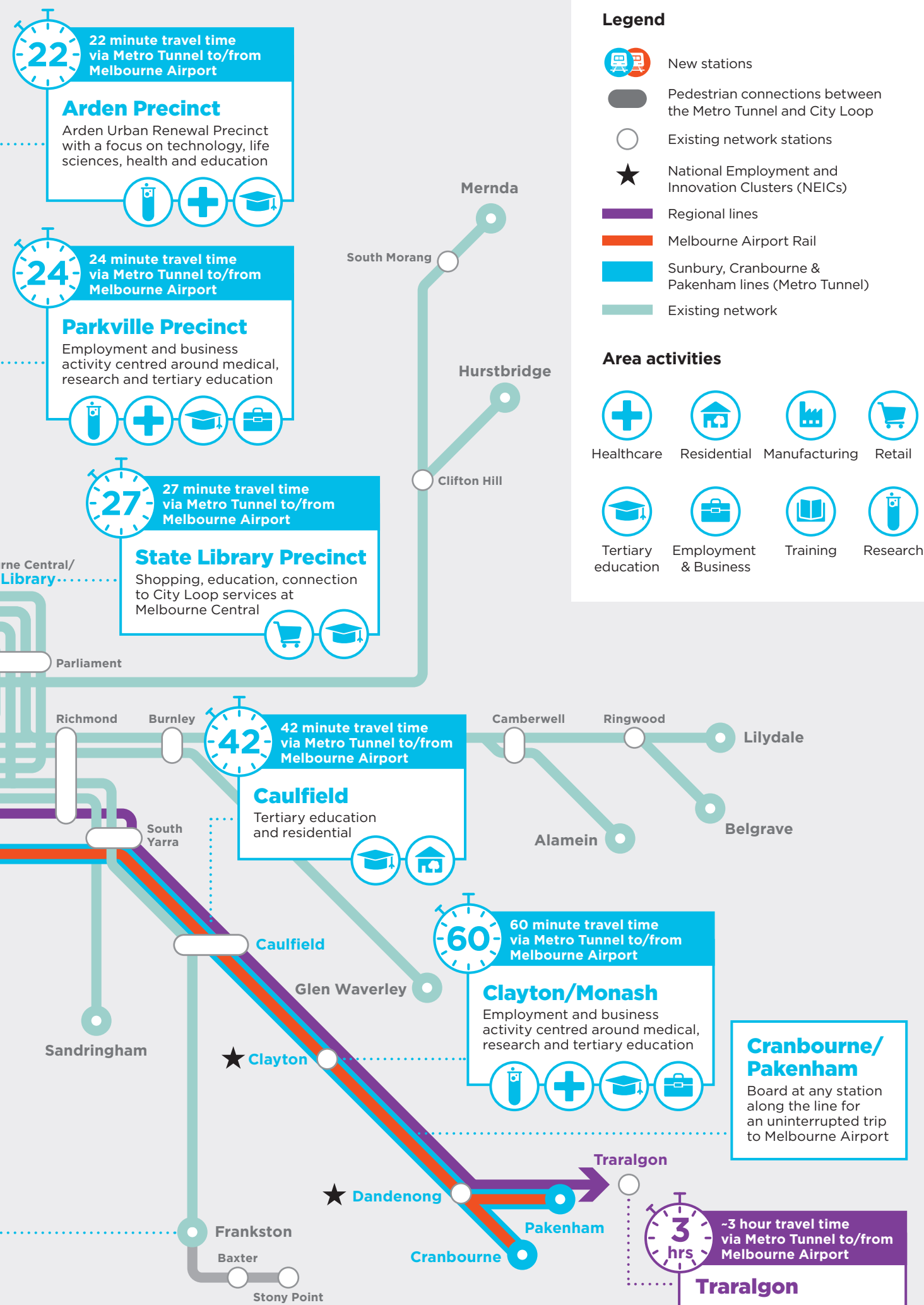
- A new premium station at Melbourne Airport
- New tracks and elevated structures between Melbourne Airport and Albion
- Track reconfiguration including new tracks and structures to separate lines between Albion and Sunshine stations.

Industry engagement will inform the optimal contract packaging approach. The final project budget will be confirmed once all major contracts are awarded.

Construction is well underway on the Metro Tunnel. Running Melbourne Airport Rail services through the Metro Tunnel is an effective way of maximising the benefits of this existing infrastructure investment.



Please note, journey times are indicative and will be verified in the development of the business case.





# A premium station at Melbourne Airport

A stylized illustration of an airport terminal and a smaller building, both represented by black and white geometric shapes. A small black silhouette of an airplane is flying in the upper left. A white dashed line curves across the bottom of the page, separating the dark blue footer from the light blue background.

Melbourne Airport's 2018 Master Plan supports an airport rail link to provide reliable travel times to existing public transport users, encourage a mode shift and facilitate future growth.

The Master Plan also "makes provision for a rail link, including reserving land on-airport for a rail alignment" which is consistent with the Sunshine route.

RPV is working closely with other transport agencies including the Suburban Rail Loop Authority to ensure links with other projects are carefully planned.

A new Melbourne Airport station will also accommodate a future Suburban Rail Loop connection, to provide commuters with the fastest and most direct connections to the airport from all parts of Melbourne and Victoria.

# Work

Planning and development of Melbourne Airport Rail is currently underway and project delivery targeted to commence in 2022.

To date more than

**100**

local and global organisations have registered their interest in delivering Melbourne Airport Rail.

# to date

Work to date has informed initial planning and design options.

## **Initial site investigations**

Early investigations have centred on current conditions within and adjacent to the rail corridor including:

- flora and fauna
- cultural and historic heritage
- geotechnical investigations
- utility surveys and inspections
- traffic surveys.

## **Design development**

Development of the project design, including key scope elements, will continue. Information from site investigations and engagement activities will continue to inform the project design, planning and decision making.

## **Market engagement**

As the first stage of market engagement, registrations of interest were sought from suitably experienced and qualified organisations interested in tendering for elements of Melbourne Airport Rail including design, engineering, construction and finance.

To date more than 100 local and global organisations have registered their interest.

## **Community and stakeholder engagement**

Stakeholder and community engagement is ongoing. Engagement has raised awareness of the project through briefings to local councils, heritage, environmental and community and will continue to support development and delivery of the project.

## **Australian and Victorian governments**

The Australian and Victorian governments are jointly funding Melbourne Airport Rail and are working together to deliver this iconic project for Victoria.

Collaboration between both governments is ongoing with the involvement of representatives from federal and state departments.

**4,420**

metres drilled investigating  
ground conditions



**152**

boreholes drilled



**70**

boreholes converted  
into monitoring wells

**1,800+**

utility pits surveyed as part of  
extensive utility and drainage surveys

**~1,400**

field hours locating utilities



**~16 km**

of vegetation mapping

**Targeted  
surveys**

for flora and  
fauna species









# Lift off

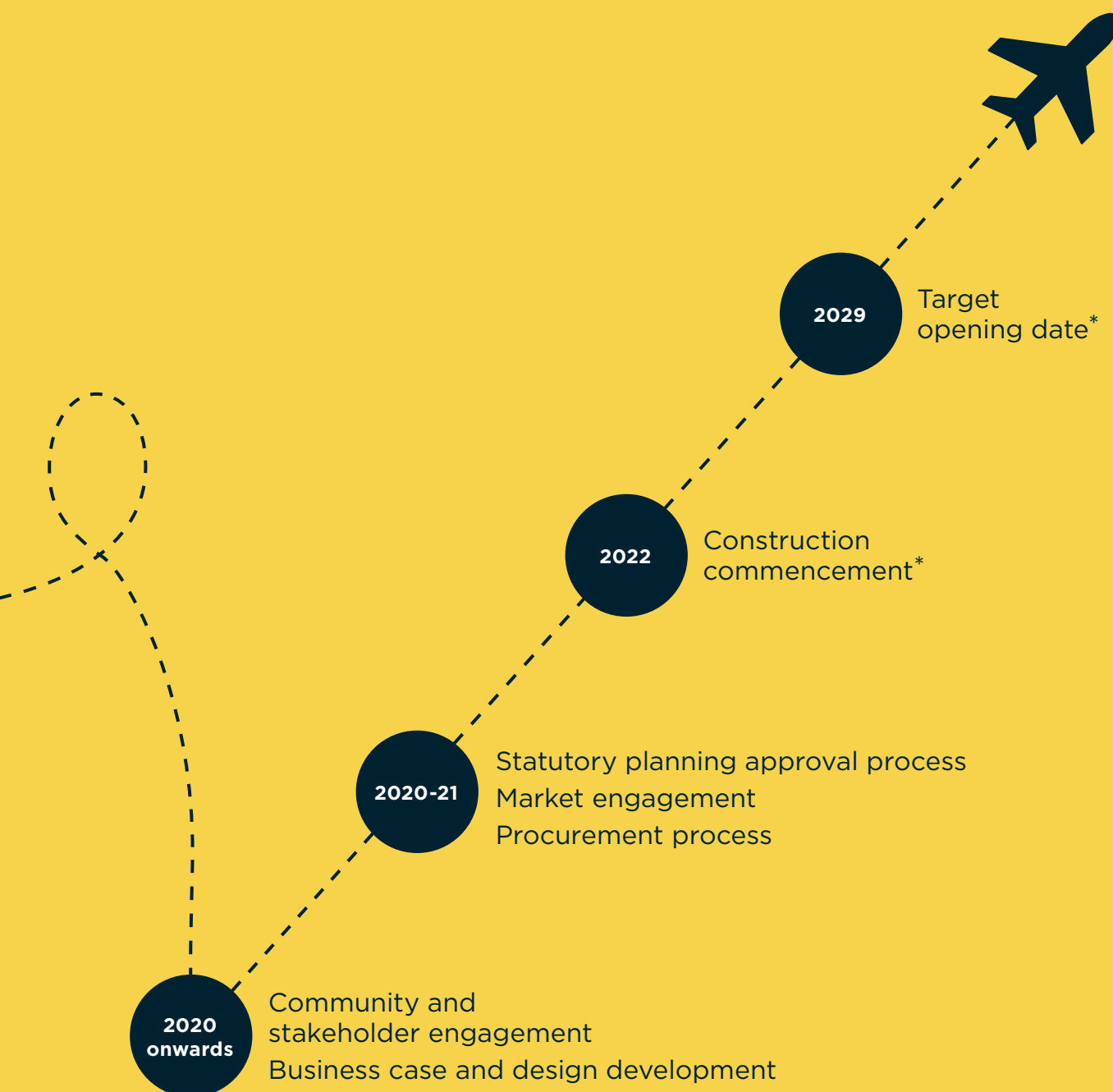
## Next steps

Further detailed planning and development work will continue, as well as completion of the business case and the next stage of market engagement.

Community and stakeholder engagement will also continue and be a key input to the project's statutory planning approvals and design development.

Construction is targeted to commence in 2022 with a target opening date of 2029\*.

\*Subject to relevant Victorian and Federal planning, environmental and other government approvals.



\*Subject to relevant Victorian and Federal planning, environmental and other government approvals.

### More information

To find out more about Melbourne Airport Rail:

 [airportrail.vic.gov.au](http://airportrail.vic.gov.au)

 1800 105 105 (24 hours a day, 7 days a week)

Rail Projects Victoria  
PO Box 4509, Melbourne, VIC 3001



Interpreter Service **(03) 9209 0147**

It should be noted that this information is current at the time of printing, however due to unforeseen circumstances, changes may occur. Please visit [railprojects.vic.gov.au](http://railprojects.vic.gov.au) for the latest updates.