



Community Liaison Group North Group Meeting

23 May 2019



Time	#	Item Detail
5.30pm	1	Welcome, introductions, apologies and actions from previous meeting
5.35pm	2	Actions from previous meetings
5.40pm	3	CLG Landscape Workshop Update
5.50pm	4	Report from CLG community members
6.05pm	5	Special Guest: Danielle Koroneos, Eli Firestone, Blake Henderson and Kim Norton
6.25pm	6	Tea Break
6.40pm	7	Construction update
6.55pm	8	Questions from CLG members on construction update
7.10pm	9	West Gate Tunnel Authority Update
7.30pm	10	Actions arising and close

Introduction and open actions

JIM WILLIAMSON

Open Actions - North Group

#	Action	Owner	Date Raised	Status
AN2	Provide an update on the design of Williamstown Road when design is finalised	TU	October	Open
AN3	Organise a workshop specifically on landscaping and open space specifically for the north group	TU	March	Closed
AN4	Follow up with VicRoads (as responsive Authority) on changes that have happened at Hyde Street due to an accident from trucks coming from Somerville Road and Whitehall Street.	CPBJH	March	Open

Open Actions - Joint meetings

#	Action	Owner	Date Raised	Status
AJ1	Provide the relevant stakeholders and CLG with most recent available landscaping design drawings	TU	December	Open
AJ2	Provide further information on the truck haulage routes and locations for disposal of spoil	TU	December	Update: Truck haulage road for tunnel spoil will be via Whitehall Street, Moreland Street and Footscray Road.
AJ7	Project to co-ordinate specific workshops with East and West members if required.	WGTA	February	Update: Joint & North workshops conducted. West workshop scheduled for 5 June.



CLG Landscape Workshop Update



JOHN
HOLLAND

Transurban

18 February – Joint Group Workshop

#	Action	Update
LJ1	Provide general overview of CLG workshop at CLG joint-meeting on February 21 and proposed communications approach going forward	Closed.
LJ2	Seek input from CLG members on activities for proposed community communications campaign (eg briefings to relevant committee meetings)	Open invitation with CLG for CPBJH JV to assist in provide briefing to community groups. WGTA members to contact WGTA to express interest in receiving a briefing. Furthermore, indicative materials were available at the North CLG and the contents of the kits were discussed, with members given the opportunity for feedback
LJ3	Prepare a visual image of what the new Whitehall Street retarding basin, shared use path bridge and Transurban operations centre design will look like	Included in rendered images being developed as part of the communications plan, and will be shared with CLG members early July (TBC).
LJ4	Include more realistic images of urban designs and landscaping as part of community engagement/inform campaign	Rendered images are in development as part of the communications plan, and will be shared with CLG members early July (TBC)
LJ5	Explore safety considerations as part of cycling and shared use path infrastructure, including detail such as pedestrian and cyclist counts, expected cyclist speeds (especially at intersections of the veloway and shared use path) and any potential additional measures required	Response being prepared by Project Co.
LJ6	Identify areas where lighting will and will not be installed at open spaces, if not, why this is not part of the design (specifically, under the elevated structures above the pump-tracks)	Response being prepared by Project Co.
LJ7	Consideration of lighting the Moonee Ponds Creek open space area, and installation of drinking taps and amenities block	Project Co and CPBJH JV gave consideration to the installation of lighting, drinking taps and amenities block in the Moonee Ponds Creek area in response to comments received from stakeholders, and determined that due to the lack of existing infrastructure, cost implications, and ongoing maintenance implications to the future owner, these assets were not to be pursued through.

#	Action	Update
LJ8	Explore all options to remove or realign the proposed truck turning bay on the Kororoit Creek Trail and respond to CLG and Friends of Lower Kororoit Creek	CPBJH JV have achieved a reduction in the size of the truck turning bay, and are continuing to explore viability and implications of an alignment change.
LJ9	Provision to join the new and existing concrete paths under Grieve Parade	In principle agreement reached between project parties and Council. Now progressing through design process.
LJ10	Look into location of Stony Creek crossing to improve passive surveillance	Advice received is this maybe achieved through civil/structural design change, although further consultation with the Friends of Stony Creek indicate its location is suitable.
LJ11	Explore opportunities to plant more trees on the port side of Maribyrnong River adjacent to MacKenzie Road	Closed. The Port of Melbourne (PoM) is the Returned Facility Owner of MacKenzie Road and has dictated a low maintenance outcome, which does not support the planting of trees. Additionally, there are physical constraints; due to the minimal available remaining space along the embankment, the existing underground sewer and relocated PoM underground utility assets, there is not enough space to plant additional trees, even if PoM expressed an interest in this.
LJ12	Explore opportunity for a gentler curve for the shared use path at corner of Hyde/Harris Streets	Closed. A gentler curve was achieved through the design change in accommodating Maribyrnong City Council's future plans for the area.
LJ13	Ensure safe and convenient access to all landscaped and open space areas for maintenance activities where access is currently constrained eg Stony Creek area north of the West Gate Bridge	Closed. This is being addressed specifically with Hobsons Bay City Council which made the request. No further updates required.
LJ14	Explore offset planting opportunities outside the project area along the project corridor	Closed. Project Co and CPBJH JV are and will continue to explore opportunities and the planting and maintenance approval/agreements.
LJ15	Look into what detail regarding existing and future vegetation can be provided in future landscaping designs	

29 April – North Group Workshop

#	Action	Update
LN1	WGTA to investigate whether noise modelling extended to the active space locations being developed under the freeway.	Noise modelling was not included in the EES for active space locations underneath the freeway in accordance with state requirements.
LN2	WGTA to review community engagement/responses to the proposed active spaces during the planning phase/EES process.	Limited input from stakeholders was provided during the EES process related to this location.
LN3	Transurban and CPBJH to engage the Friends of Stony Creek, Maribyrnong Council and advisory group established to oversee the Stony Creek rehabilitation during the landscape design development.	Project Co liaising with Maribyrnong Council and will attend the next Advisory Group meeting.
LN4	Project parties to consider opportunities for community participation in the future landscaping of Stony Creek through activities such as tree plantings.	Closed. Project Co and CPBJH JV have agreed to explore this closer to scheduled planting time, later in Project timeline.
LN5	Project parties to provide Steve Wilson with a copy of the preliminary design plan for Stony Creek reviewed at the workshop so that he can share it with the Friends of Stony Creek.	Closed. See update for action 3. Maribyrnong City Council will engage with Friends of Groups and provide comment.
LN6	WGTA to respond to concerns by members on the use of Moonee Ponds Creek active space and consideration of tree planting.	

5 June – West Group Workshop

- Invitations sent to members
- Held at West Gate Tunnel Information Centre





Report from CLG community members



Special Guest Rail Projects Victoria

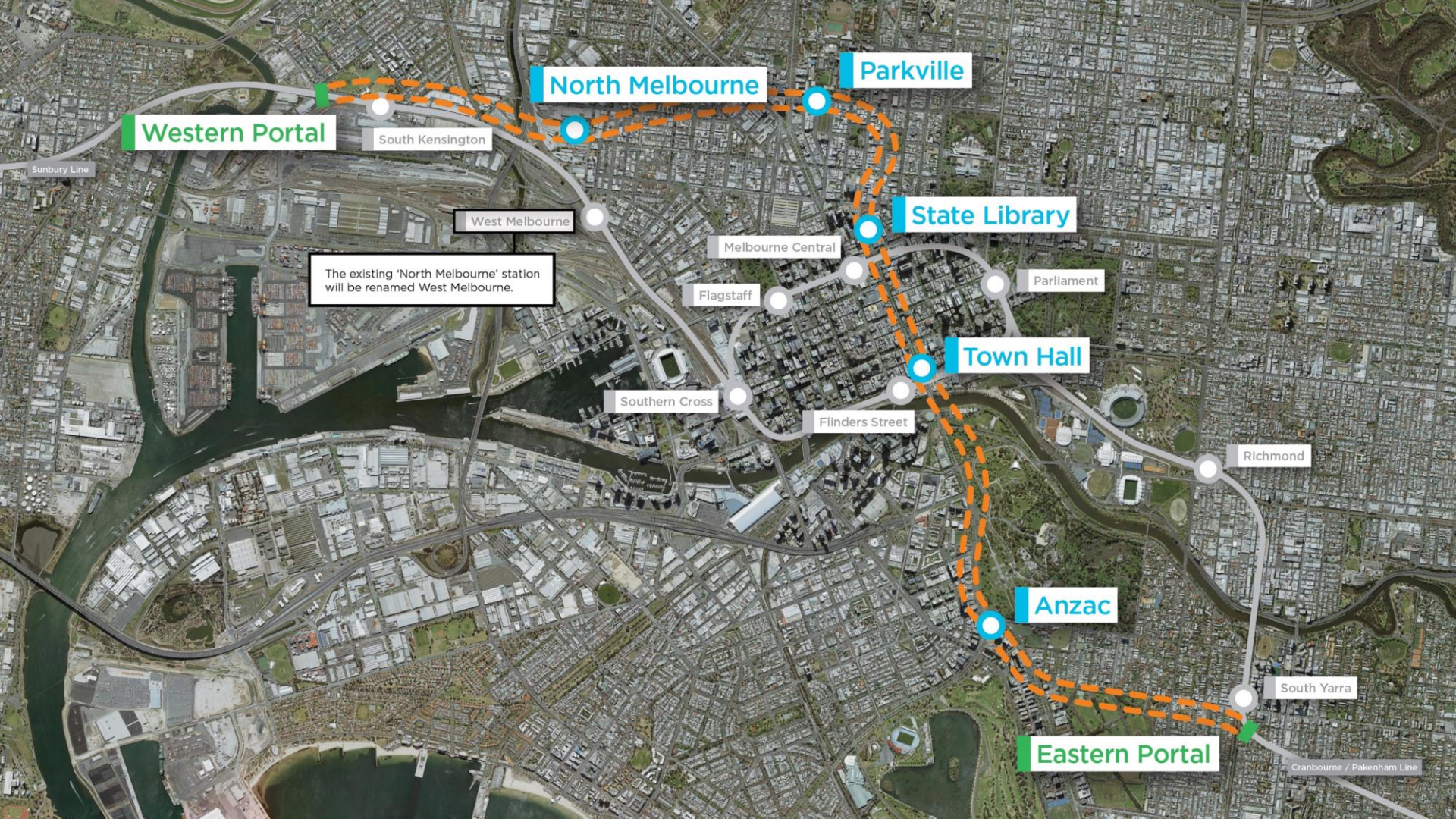
Danielle Koroneos, Eli Firestone, Blake Henderson, Kim Norton



- WEST GATE TUNNEL PROJECT
 - COMMUNITY LIAISON GROUP PRESENTATION
-
- 23 MAY 2019



- **METRO TUNNEL
PROJECT**



Western Portal

South Kensington

North Melbourne

Parkville

The existing 'North Melbourne' station will be renamed West Melbourne.

West Melbourne

Melbourne Central

Flagstaff

Southern Cross

Flinders Street

State Library

Parliament

Town Hall

Anzac

Richmond

South Yarra

Eastern Portal

Sunbury Line

Cranbourne / Pakenham Line

• NORTH MELBOURNE STATION



CONCEPT IMAGE

• PARKVILLE STATION



• STATE LIBRARY STATION



• TOWN HALL STATION



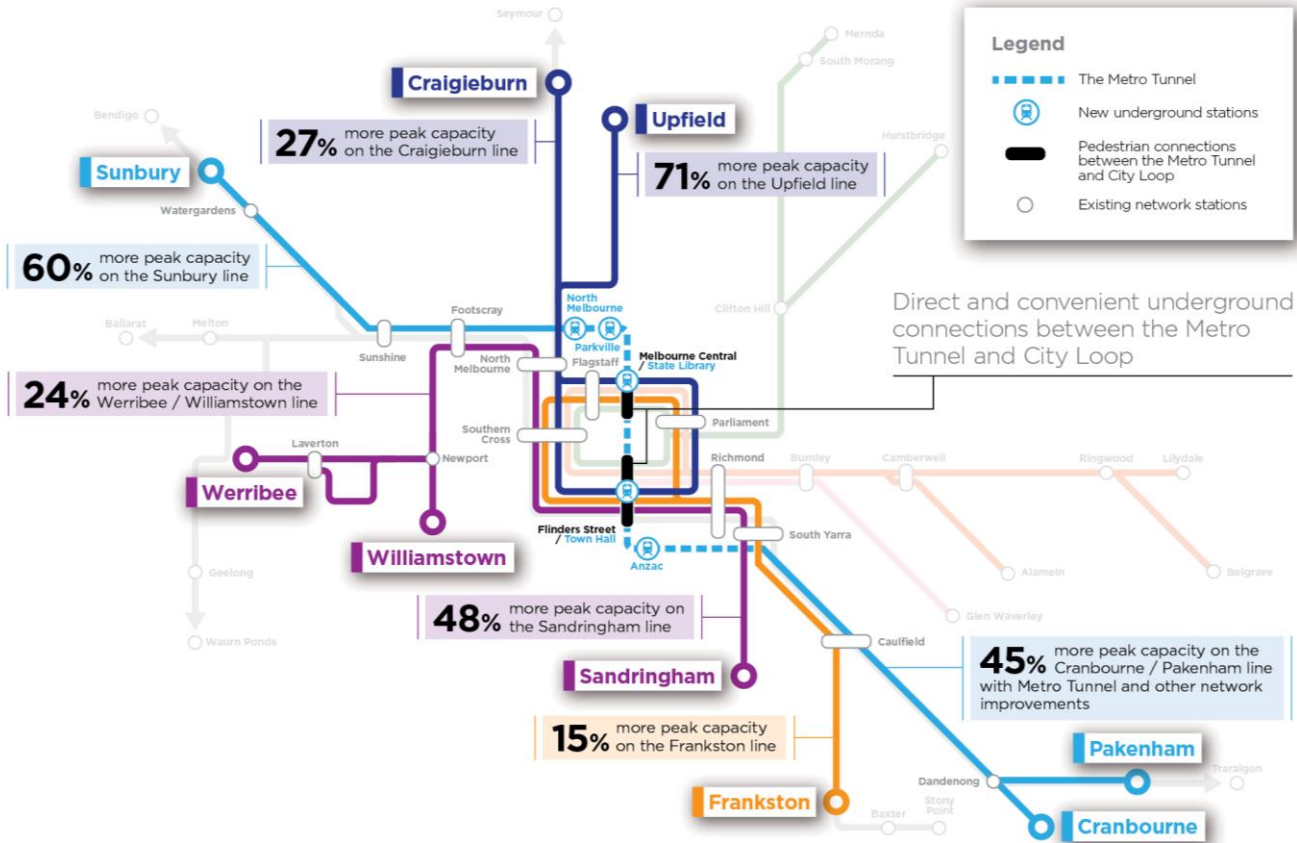
• ANZAC STATION



• HIGH CAPACITY SIGNALLING



• CAPACITY BENEFITS





NORTH MELBOURNE

• NORTH MELBOURNE STATION

- Located near the corner of Arden and Laurens streets
- Catalyst for urban renewal in the broader Arden Precinct
- Station design to reflect industrial character of North Melbourne



CONCEPT IMAGE

• THE VISION FOR ARDEN



Figure 1

Artist's impression
of the future Arden
precinct

Indicative only

• WHAT'S HAPPENING AT NORTH MELBOURNE

- Station box excavation and installation of station box frame (steel struts)
- Station box base slab construction
- Internal haul road concreting to minimise spread of dirt onto local streets



• CONSTRUCTION SITE



STATION BOX CONSTRUCTION



• TUNNEL BORING MACHINES



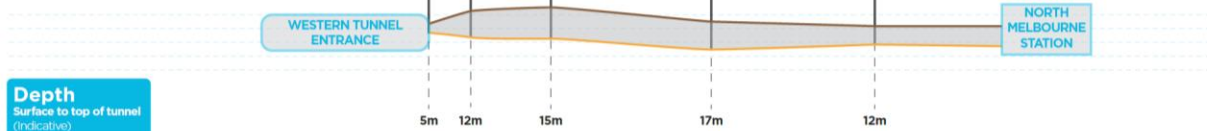
• TUNNELLING TIMELINE

Timing	Route
January 2019 – mid 2019	TBMs arrive Arden and assembled
3rd quarter 2019 – 4th quarter 2019	TBM 1&2 – Arden to Western Portal
4th quarter 2019 – 1st quarter 2020	TBM 1&2 - transported back to Arden
1st quarter 2020 – mid 2020	TBM 1&2 – Arden to Parkville

• TUNNEL ALIGNMENT & DEPTH – KENSINGTON TO NORTH MELBOURNE



TBM Joan path
TBM Meg path
Surface level
Top of tunnel

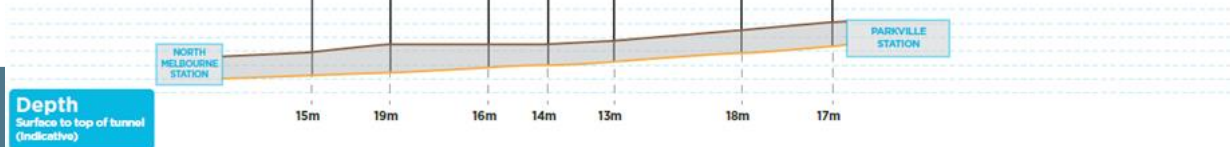


Depth
Surface to top of tunnel
(indicative)

• TUNNEL ALIGNMENT & DEPTH – NORTH MELBOURNE TO PARKVILLE



TBM Joen path
TBM Meg path
Surface level
Top of tunnel



Depth
Surface to top of tunnel
(Indicative)

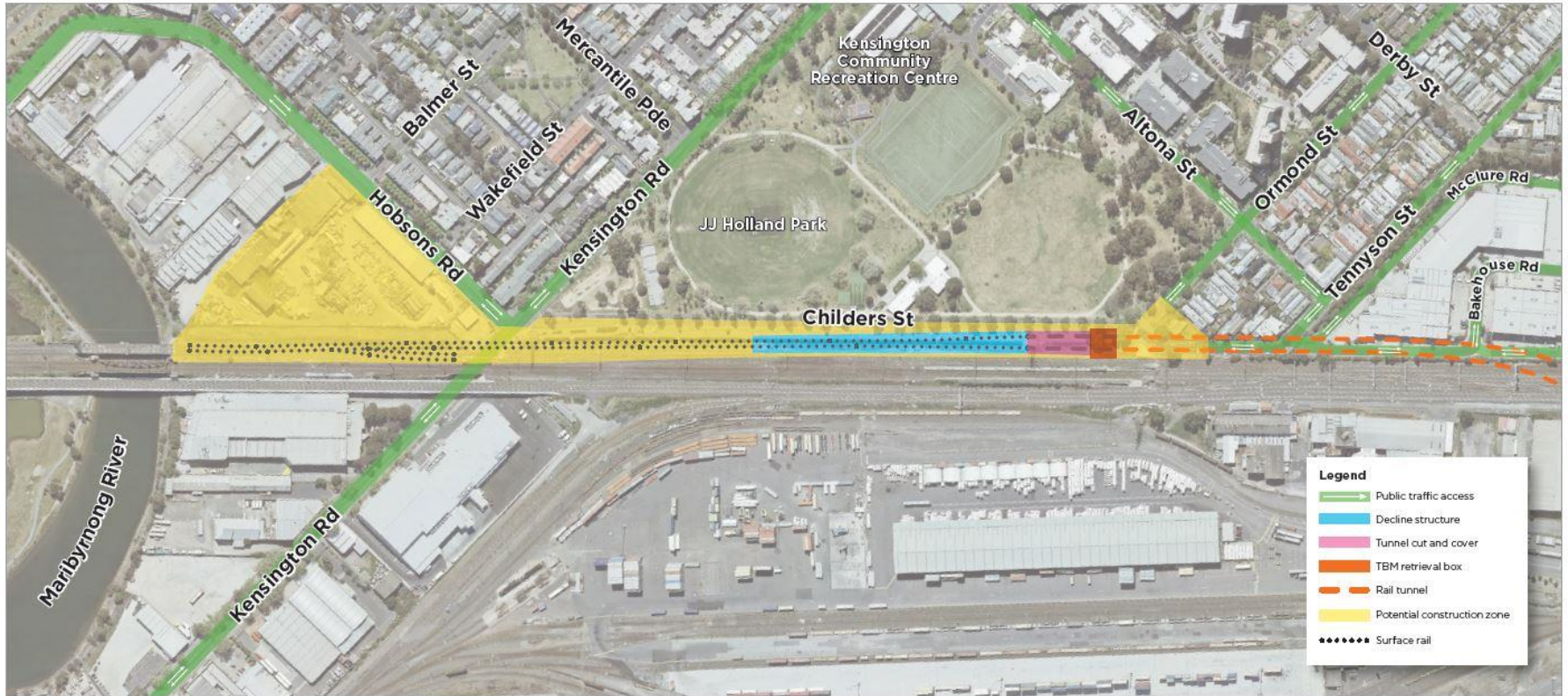


KENSINGTON

• WESTERN TUNNEL ENTRANCE



• WESTERN TUNNEL ENTRANCE



Access maintained through construction site on Childers Street for over-height vehicles accessing the Lloyd Street Business Estate and residents on Childers Street and Tennyson Street (south of the truncation).

indicative only

• WHAT'S HAPPENING AT KENSINGTON



• CONTACT US



metrotunnel.vic.gov.au



1800 105 105 (24 hours a day, 7 days a week)
Press 2 and follow the prompts



facebook.com/metrotunnel



Subscribe to eNews or construction notification
emails: metrotunnel.vic.gov.au/subscribe



• **QUESTIONS?**



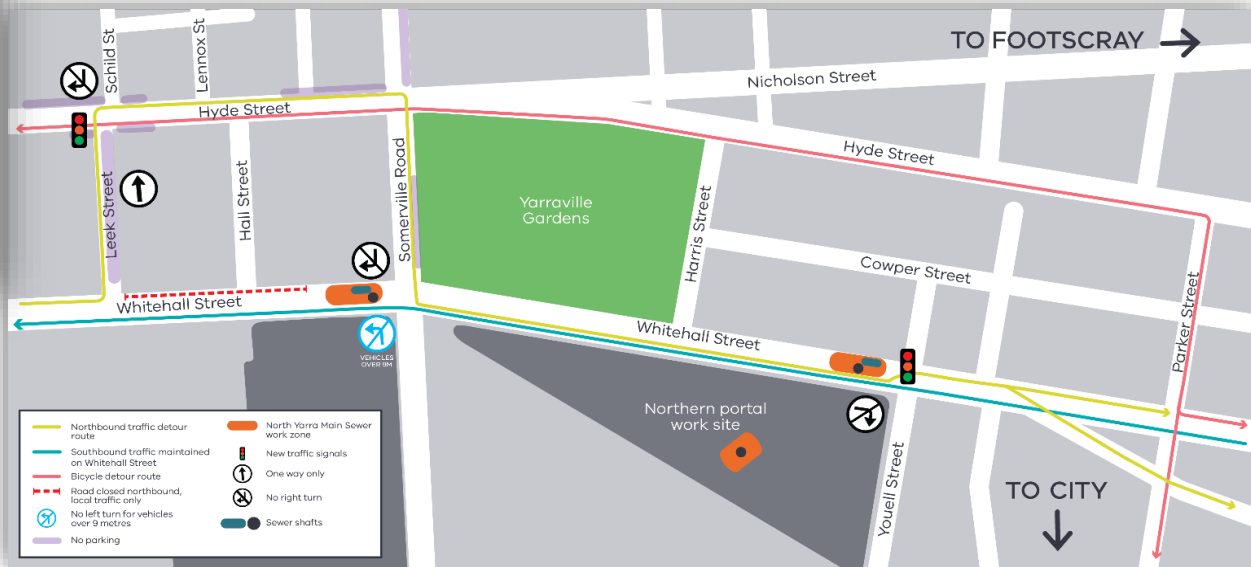
Tea break



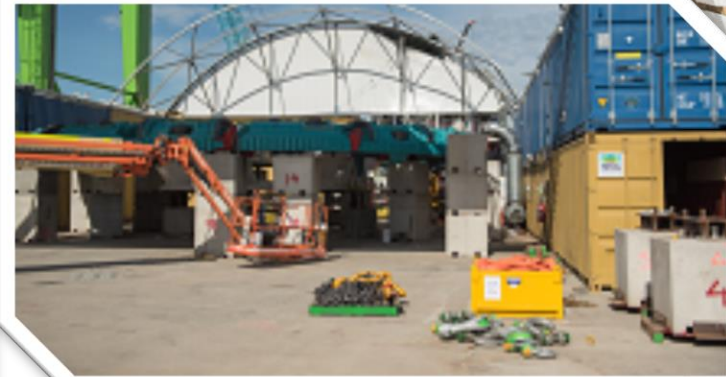
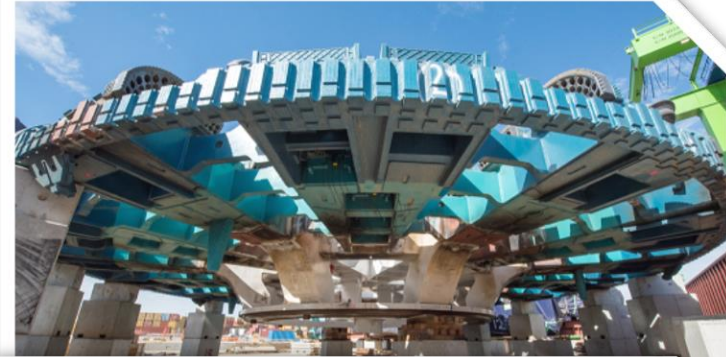
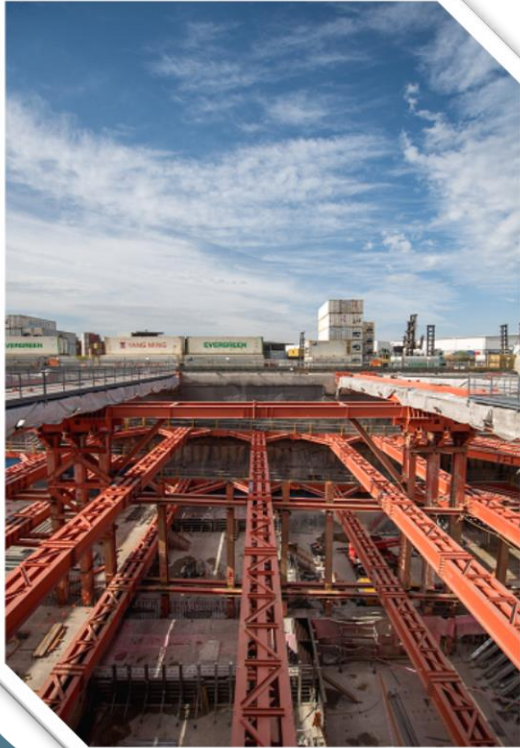
Construction update Tunnel Zone

CPBJH Joint Venture

North Yarra Main Sewer



Northern Portal



Pivot Site



Tunnelling engagement

- Residents and businesses above the tunnel
- Property condition surveys
- Instrumentation and monitoring installation
- Engagement preferences
- Information sessions
- Specific CLG session





Construction update Port to City Zone

CPBJH Joint Venture

Maribyrnong River works

- Piling works – noise, vibration – closely monitored
- Smithfield Bridge works
- Power relocation works ongoing – night lane closures
- Engagement with local businesses
- Two notifications distributed in April



Footscray Road

- Ongoing service relocations
- Road alignment changes soon – outbound traffic shift to south
- Piling works – noise, vibration
- Mid-year delivery of launching gantry to build elevated road
- Minor shared use path changes at times – mainly off peak
- Tree removal to continue along Footscray Road from August



City connections

- Piling works beginning
- Track relocation – multiple asset owners
- Building demolition and site establishment in E and F Gates
- Tree removal along Moonee Ponds Creek
- Site investigations and E/F Gate works notifications distributed in April
- Dryburgh Street intersection works scheduled from August



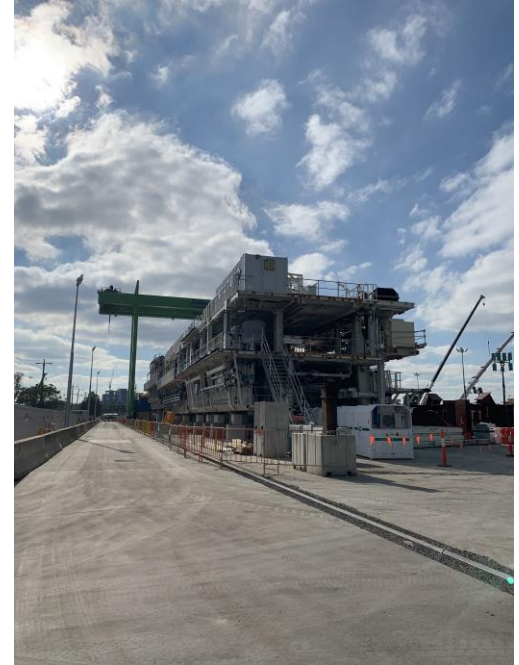


Questions and discussion from CLG members on upcoming works



West Gate Tunnel Project (MTIA) Update

CLG - Northern Portal Site Visit



CLG Recruitment

West Gate Tunnel Project Community Liaison Group – seeking community members



The West Gate Tunnel Project will provide a much-needed alternative to the West Gate Bridge and will open in 2022.

We're looking for interested community members to join the project's established Community Liaison Groups.

Community Liaison Groups provide an avenue for community members to understand what's happening during construction, to share local information and help support community engagement activities relating to the project.

Expressions of interest are now welcome from individuals keen to represent their local communities.


We're looking for people who:

- Are interested in the development and construction of one of the largest road projects underway in Melbourne
- Are proactive and collaborative in their participation
- Have strong and diverse links to their community
- Live in suburbs which may include: Point Cook, Altona, Altona North, Brooklyn, South Kingsville, Spotswood, Footscray, Docklands, North and West Melbourne
- Are willing to commit to and attend regular meetings

To find out more, including the Terms of Reference and to complete an application, please go to the project website:

westgatetunnelproject.vic.gov.au/clg

Expressions of Interest will close on Friday 7 June 2019.

 info@wgta.vic.gov.au

 westgatetunnelproject.vic.gov.au

 1800 105 105

 facebook.com/westgatetunnelproject



Transurban



• **Expression of Interest will close on Friday 7 June 2019**

May Community Update



Building Bella

What takes teams of 30 people working around the clock 75,000 working hours to assemble? Bella, the West Gate Tunnel Project's first tunnel boring machine (TBM).

It took over 100 truck loads to deliver Bella to the Northern Portal in January and February.

Now that all of Bella's components are on site, assembly of the 15.6m high and 90m long TBM is gradually progress forward, before she starts her journey digging a 4 kilometre tunnel from Yarraville to the West Gate Freeway.

Meanwhile the project's second TBM, Vida, will start arriving on site in May. Tunneling will start mid year.

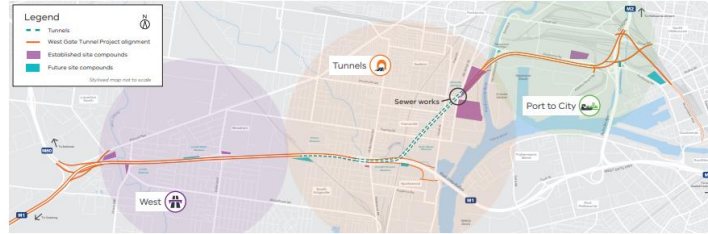
Did you know?

To reduce disruption to local traffic, pedestrians and cyclists as works ramp up, an 11 tonne, 8 metre high footbridge for West Gate Tunnel Project workers is now in place over Somerville Road at Yarraville between two of

TBM Facts

- 30** people will work each shaft 24/7 to build Bella
- 15.6m** There are 32 16-inch blades on the front of Bella for cutting hard rock
- 500** The 500 tonne gantry crane is one of the largest in Australia
- 75,000** working hours are needed to assemble Bella

our major work sites. At the peak of construction, there will be 500 people working between the two sites.



Faces of the West Gate Tunnel



West: Frances McNulty

There's more to noise walls than meets the eye, especially for West Gate Freeway precinct Design Manager Frances McNulty. Noise walls need to significantly reduce traffic noise along the project corridor, but they also need to look good and fit in with the community around them.

Frances and a team of designers have worked through these challenges to design noise walls that are a combination of textured concrete and coloured acrylic panels that let sunlight through and reduce over-shadowing, particularly for residents living next to the freeway. Following years of community consultation and design work, Frances is excited to see the designs come to life later this year as construction gets underway to install the new noise walls.



Tunnels: Andrew Lauer

Wondering what's been going on while lanes are closed on Whitehall Street Footscray and Yarraville? Well, Andrew Lauer is one of a team of operators who have been busy driving mini TBM Mollie, to divert the North Yarra Main Sewer.

Andrew started his career as a carpenter, but got into tunnelling in the early 2000s. He's worked on seven tunnelling projects and says each is unique. Over the four months that Mollie was working underground, a typical day for Andrew involved making sure that Mollie was ready to move her way through the ground. He made sure that Mollie was balanced on the cut, twisted and crushed everything in her path and kept tabs on the excavated material. With Mollie's work now done, Andrew is preparing for an even bigger job – getting ready to drive TBM Bella when she starts digging in the middle of the year.



Port to City: Meg Haas

Meg Haas has developed her childhood love of history into a career, working as an Archaeologist and Heritage Advisor on the West Gate Tunnel Project.

Meg works with the team that recovers and records any artifacts found at our sites, and has recently been involved in a dig close to the CityLink ramp on Footscray Road, with findings including ceramics, glassware and marbles. The team pinpoints areas to excavate before digging carefully layer by layer, documenting then transporting anything of significance that is found for safe keeping.

Meg's job can be complicated, but she loves it because it provides a balance between her love of historical research and writing and working outdoors. Meg works for the project's archaeology consultant, Dr Vincent Clark & Associates.

Timeline

- 2018**
 - Started construction
 - West Gate Freeway widening started
 - Construction started on Footscray Road



What the West Gate Tunnel will bring you

- New pedestrian bridges like those at Footscray Road
- New cycleways and open space upgrades
- Improved road safety
- Reduced traffic congestion
- Improved air quality
- Reduced noise
- Improved public transport
- Improved safety for all road users

Community representation opportunities

Community representation opportunities are available for the West Gate Tunnel Project. You can provide input on the design and construction of the project. For more information, visit www.westgatetunnel.com.au

Contact us

For more information, visit www.westgatetunnel.com.au or call 1300 762 762

- 2022**
 - Tunnels fit out and freeway management technology installed
 - Cycling and open space upgrades complete
 - Tunnel opens



Actions arising and close