



Fixing the missing link in Melbourne's freeway network

Works on North East Link are ramping up, ahead of major construction next year.

North East Link will slash travel times across the north-east by up to 35 minutes and take 15,000 trucks off local roads a day.

We're moving more than 34 kilometres of gas, water, sewer pipes and other services with our early works program creating 1000 construction jobs across Melbourne's north and east.

We've also fast-tracked the new Bulleen Park & Ride by four years, while planning continues for a dedicated busway to provide faster, more efficient trips along an upgraded Eastern Freeway.

As part of the massive early works program we're:

- moving a 2.5 kilometre gas main on Greensborough Road
- moving two 55 metre high transmission towers at Watsonia
- upgrading Ford Park in Bellfield, Binnak Park in Watsonia North and Greensborough College to keep local clubs playing and thriving during major construction and beyond
- continuing to work on one of the biggest tree planting programs ever undertaken on a Victorian road project, working with the community to plant more than 30,000 trees, and
- getting ready to launch the project's first mini tunnel boring machines in Bulleen which will build 1.8 kilometres of new sewer.

Keep an eye out for more works over summer as we continue the massive early works program ahead of major construction starting next year.

Stay up to date with works in your area by signing up to our email updates:
northeastlink.vic.gov.au/contact/subscribe



Night works on
Greensborough Road



Changes to local
traffic in Watsonia



Designs for project
released in early 2021



Major construction to
start in late 2021

Early works are underway in the north-east

Major gas and power relocation works on Greensborough Road

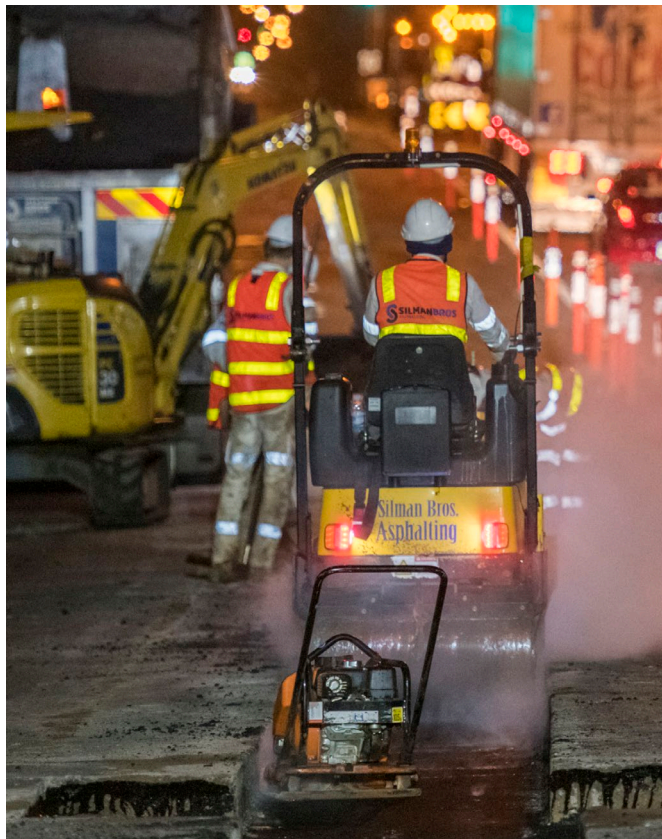
The mammoth task of moving almost 100 above and below-ground services to make way for North East Link has begun.

We've been busy moving 2.5 kilometres of gas pipe, with overnight lane closures on Greensborough Road, between Lower Plenty and Watsonia roads. Works will continue overnight to keep the road open for the 40,000 motorists who use it every day.

Works started in November to move two 55 metre tall high voltage towers in Watsonia to Frensham Reserve, about 80 metres from their current location. Keep an eye out for lane closures at the northern end of Greensborough Road and side roads during these works, which will take around six months to complete.

The first site compound for the project has been set up at Borlase Reserve, Yallambie, to help builders move key power, water, sewer and telecommunication services.

These major relocation works will continue throughout 2021 in readiness for major construction of North East Link.



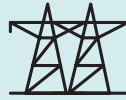
▲ Some works are taking place at night to reduce disruptions to daytime travel

Early works so far



1km

Of gas pipe moved on Greensborough Road



2

High voltage towers moving at Watsonia



700

People working on the project



3

Mini TBMs ready to dig a new sewer in Bulleen



Artist's impression

▲ The grass is greener with a new community park to be built on the roof of the Bulleen Park & Ride

Park and ride fast-tracked

We're building Melbourne's first dedicated busway – starting in Bulleen

Bulleen's new park and ride will feature a 5000 square metre green roof as well as parking for up to 370 cars, bike storage cages, toilets and myki facilities.

Built as part of North East Link's new dedicated busway, the new park and ride will be fast-tracked by four years to open by late 2022 – creating 300 jobs.

Along with upgrades to Doncaster Park & Ride, car spaces will double to about 800 – getting more people on faster, more frequent bus services. Find out more at engage.vic.gov.au/north-east-link/bulleenparkandride



Artist's impression

▲ It'll be game on for sporting teams when modern facilities are complete at Ford Park, Bellfield

Big boost for local sports

A \$68 million investment in sports facilities has kicked off with work at Binnak Park in Watsonia North and Greensborough College

Up to 20,000 sports players will benefit from six new pavilions and major upgrades at 19 football, cricket and soccer grounds across the northern and eastern suburbs.

Works are already underway at Ford Park in Bellfield, Binnak Park in Watsonia North and Greensborough College, to keep clubs playing and thriving as we deliver North East Link.

New synthetic and natural turf equivalent to 13 MCGs will be laid, with new electronic score boards, field lighting and female friendly change rooms installed.

The Binnak Park upgrades will provide a new home for the Plenty Valley Cricket Club and Watsonia Sporting Club, who will join the park's other team, Parade St Damian's Junior Football Club, when the first round of upgrades are complete in mid-2021.



Find out more about North East Link's sports investment at northeastlink.vic.gov.au

Tree program branches out

The first trees are in the ground as part of North East Link's tree planting program

One of the largest tree planting programs ever undertaken on a Victorian road project has begun, with the first batch of at least 30,000 trees planted.

More than 250 trees and 2500 shrubs and grasses were planted at Belle Vue Primary School in Balwyn North and Simpson Barracks in Yallambie.

The native trees and plants have been sourced and planted by Ecodynamics nursery, a social enterprise, and one of more than 50 local organisations who registered to be part of tree planting for the project. This is one of the ways Victoria's Big Build will be supporting local businesses.

The North East Link Project, in consultation with the Department of Defence, is also relocating Lone Pine trees at Simpson Barracks to a new ANZAC Day commemorative area, and has collected Matted Flax-Lilies from the Barracks for replanting.



Help create a greener north and east

We're looking for ideas on where to plant trees near North East Link next. To get involved, take the survey at engage.vic.gov.au/north-east-link/trees



▲ Trees are being planted at Simpson Barracks

Major transport projects in Melbourne's north-east

M80 Upgrade reaches next stage

Upgrades will make way for faster, safer travel across the region and better connections to North East Link

Work sites have been established along the freeway for construction between Sydney and Edgars roads, with crews relocating communications cabling to enable a smart freeway management system to be installed to improve traffic flow and safety.

About 7.6 kilometres of traffic barriers and fencing and 40 kilometres of temporary road markings have been installed.

Temporary barriers using shipping containers are now in place between the Hume Freeway and Edgars Road to reduce noise while traffic management plans are in place to minimise impacts.

The upgrade is scheduled for completion in 2023.

Register for updates at engage.vic.gov.au/m80-upgrade



▲ Smart traffic technology will improve your travel from Sydney Road to Edgars Road on the M80

Fitzsimons Lane and Yan Yean Road upgrades

Detailed planning and design is continuing on the Fitzsimons Lane Upgrade in Eltham. Site investigations commenced in October to locate underground utilities ahead of construction starting in early 2021.

Workers are out and about along Yan Yean Road as crews carry out site investigations as part of planning for Stage 2. Public viewing of the Environment Effects Statement is now complete, although construction of the project won't commence until all planning and environmental approvals are finalised.

The upgrade will help make it safer and smoother to travel through Plenty, Yarrambat and Doreen, as part of our program of works to improve roads right across the north east.

New stations at Bell and Preston

Four more level crossings to go on the Mernda line

Designs have been unveiled for the new Bell and Preston premium stations, being built as part of the project to remove four dangerous and congested level crossings on the Mernda line.

Early works will get underway later this year ahead of the removal of the crossings on Oakover Road, Bell Street, Cramer Street and Murray Road.

Hurstbridge Line Duplication to deliver more trains, more often

Early works and site preparations continue

As part of the \$530 million Hurstbridge Line Duplication, we're building a new station at Greensborough, upgrading Montmorency Station and duplicating more than 4.5 kilometres of track.

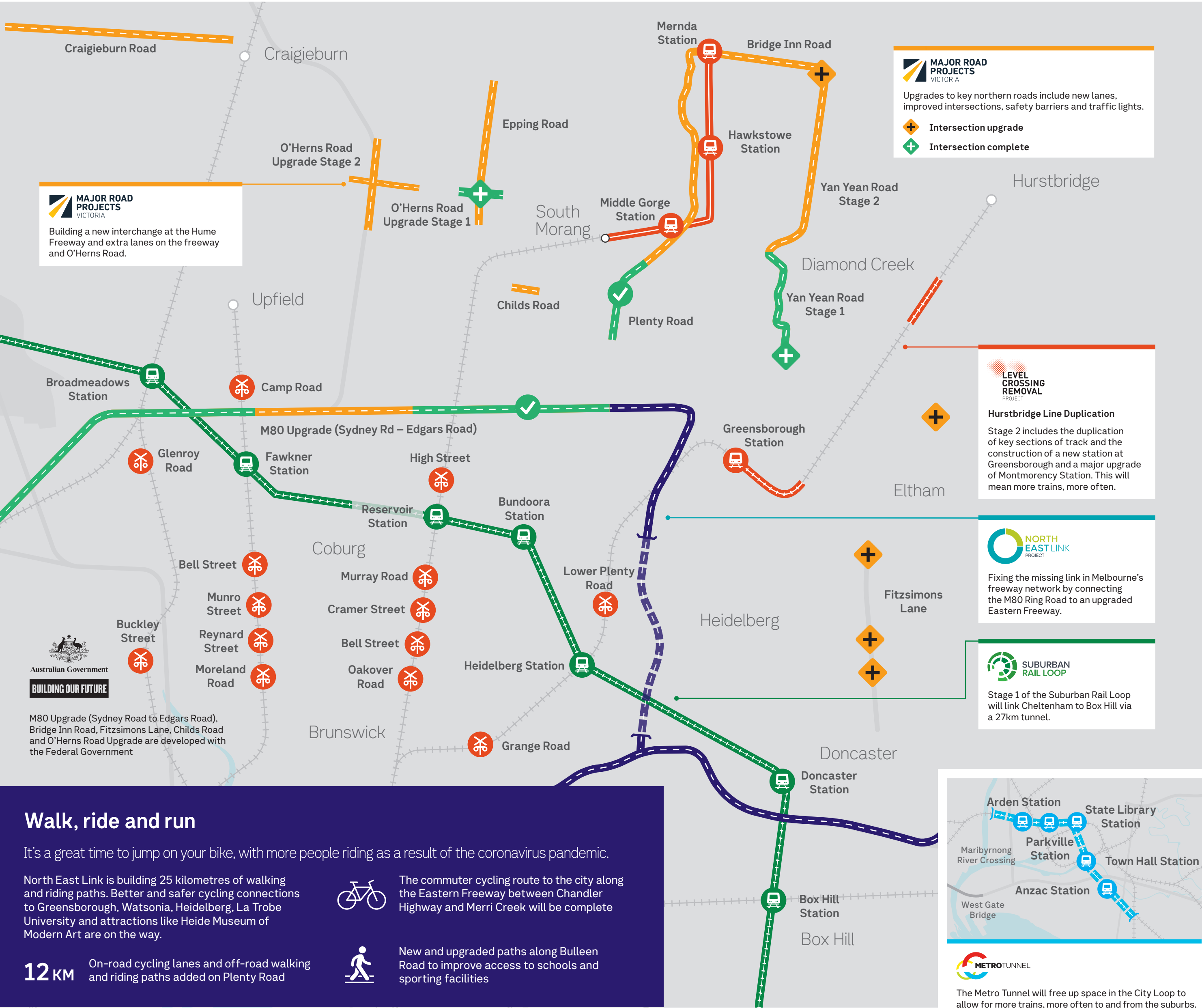
Freeing up notorious bottlenecks along the line will allow trains to run every six-and-a-half minutes at Greensborough, every 10 minutes at Eltham and Montmorency, and every 20 minutes at Hurstbridge, Diamond Creek and Wattle Glen – as well as delivering extra services right along the line.

The Level Crossing Removal Project team have consulted with the community on the new station precincts at Greensborough and Montmorency. This has included feedback on the look and feel of the station, plus public art and landscaping.



▲ Extra track on critical stretches of the Hurstbridge Line will allow more trains to run

We've taken Victoria's Big Build community engagement online. To learn about virtual events, visit engage.vic.gov.au/bigbuild



Summer disruptions

We're working hard to build a better transport network over the summer months. While we work, road and public transport disruptions could affect your travel.



Road and freeway upgrades

Intersection, lane and pathway closures during summer

The Plenty Road Upgrade and M80 Upgrade continue with intersection, lane and pathway closures.



Works continue on North East Link

Overnight lane closures on Greensborough Road during summer

There will be lanes closed overnight on Greensborough Road as gas pipes are moved as well as some night time works to relocate water, power and telecommunication services. Detours on local roads around Watsonia Station will be in place as we move two transmission towers.



Level crossing removal on the Craigieburn Line

Buses will replace trains in January

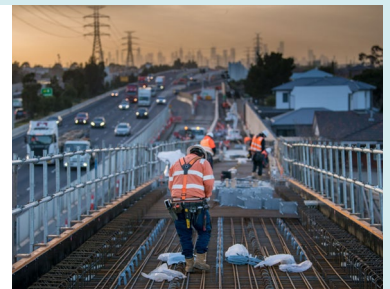
Construction continues on the Glenroy Road level crossing removal on the Craigieburn Line, with buses replacing trains in January. There will also be local lane and road closures in the area during the removal.



Summer travel

Freeway and regional disruptions in January

If you're travelling around the state, keep in mind that West Gate Tunnel works will impact the West Gate Freeway in January while annual maintenance on the West Gate Bridge will also cause delays in December. There will be disruptions in regional Victoria too.



Keep in touch to find out if you'll be affected by disruptions

1

Go to the calendar on our disruptions page at bigbuild.vic.gov.au

2

Choose the disruption relevant to you

3

Subscribe to the calendar to stay up to date

Find out how we're building big in the north-east at bigbuild.vic.gov.au
To talk to us call **1800 105 105** any time.

If you're deaf, or have a hearing or speech impairment, contact us through the National Relay Service – for more information, visit relayservice.gov.au



For other languages
call 9209 0147



@bigbuildvic

