



# STATE LIBRARY STATION COMMUNITY REFERENCE GROUP

CROSS YARRA PARTNERSHIP  
FRIDAY 16 JULY 2021





## STATE LIBRARY STATION COMMUNITY REFERENCE GROUP

---

Jodie Barrington, CBD Precinct Lead, CYP D&C

Melinda Kelly, State Library Station Stakeholder Engagement Manager, CYP D&C



Construction partner:



# AGENDA

1. Project overview
2. State Library Station update

# PROJECT OVERVIEW



Presenter: Blythe Chidgey



# ARDEN

- At the Arden Station services building, roof installation has commenced.
- The ground level entrance stairs were also recently installed and ventilation shaft works completed.
- Over at the station entrance, twenty-eight brick arch segments have been cast. The temporary falsework will go up next month. This will support installation of the station entrance arches.

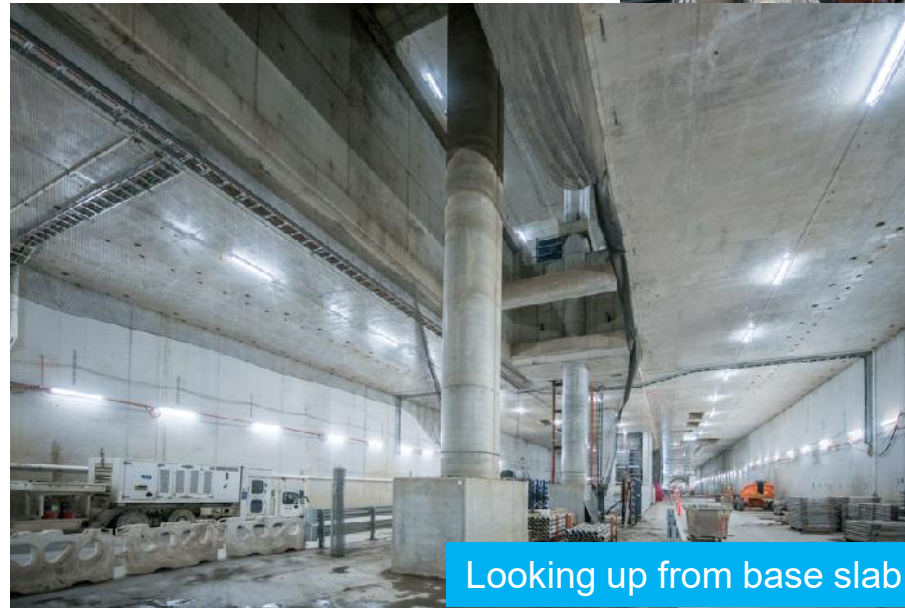


# PARKVILLE

- Construction continues in the main station box, west box and surrounding areas
- In the University Square Car Park, modification of the car park structure is underway including basement excavation
- At the Royal Parade entrance and retail area, construction of lining walls from B2 to roof slab level and removal of piles
- At Grattan Street west, installation of formwork and reinforcement for the station entrance roof slab is almost complete.



Grattan Street West Works



Looking up from base slab

# TOWN HALL

- Under Swanston Street, the Town Hall Station central cavern is taking shape
- On both sides of the central cavern, roadheader excavation continues in the platform rail tunnels
- At the Flinders Quarter site, bulk excavation of the B2 level is nearing completion
- Works are underway to construct the Flinders Link pedestrian connection roof.
- At City Square bottom-up station build out works continue
- TBM cutterhead removal is ongoing at the Collins Street adit end of the site.



# ANZAC

- D-walls are starting to come down with the demolition of the first section of D-wall that separates the tram interchange and station box
- In the tram/train interchange station entrance area, the falsework deck for the first roof slab pour continues to take shape, as the lining walls are constructed.
- Two of the cross passages between Anzac and Town Hall Station are being excavated, with spoil being removed from the north box at Anzac Station.





# STATE LIBRARY STATION UPDATE



Presenter: Melinda Kelly 



## STRUCTURES AND LINING

- Lining works in the central cavern arch is close to completion
- Two station tunnel lining formwork systems (STLF's) are being used to install the concrete along the arch of the central cavern
- A custom built cage frame lifter is being used to efficiently and safely install pre-fabricated cages along the arch of the central cavern
- Installation of waterproofing and steel reinforcement in the rail tunnels is underway

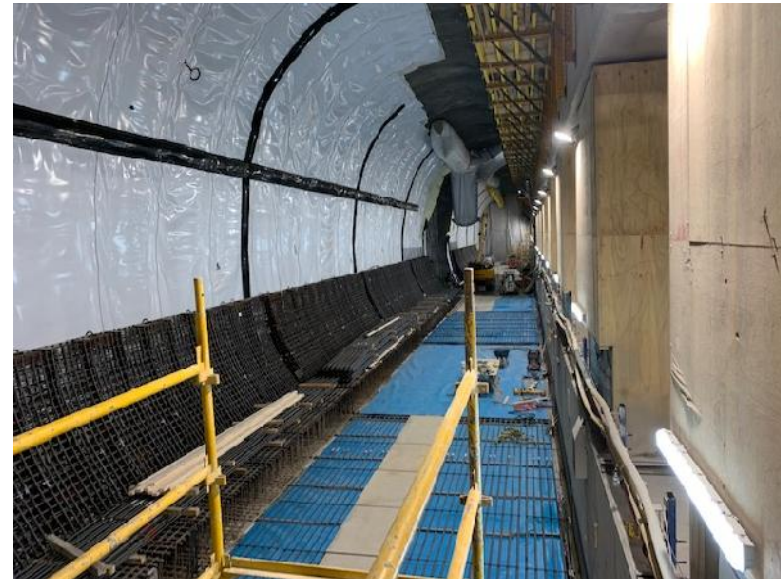


# STRUCTURES AND LINING

Activity	Jul	Aug	Sep	Oct	Nov	Dec
Central cavern arch lining	●					
Waterproofing platform rail tunnels	●		●			
Rail tunnel arch lining				●		
Concrete and reinforcement deliveries and installation						

## HOURS

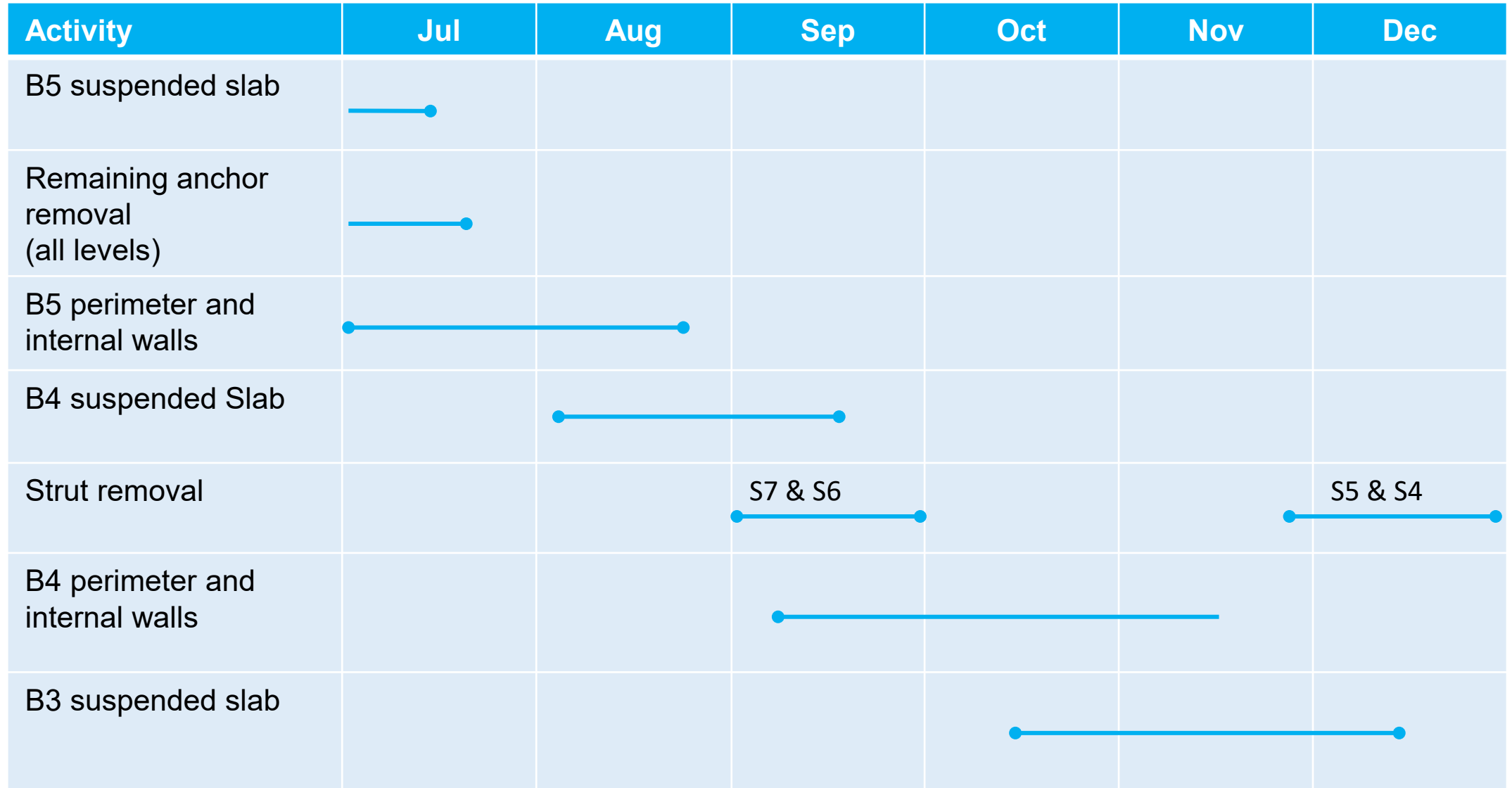
- Monday to Sundays, 24-hours





**FRANKLIN STREET SITES**

# FRANKLIN STREET EAST



# FRANKLIN STREET WEST

Activity	Jul	Aug	Sep	Oct	Nov	Dec
B6 to B4 perimeter and internal walls	—————●					
B4 slab				●—————		●
Laydown area changes		●—————●				
Monorail reinstatement					●—————	
S4 strut removal						●—————



## HOURS

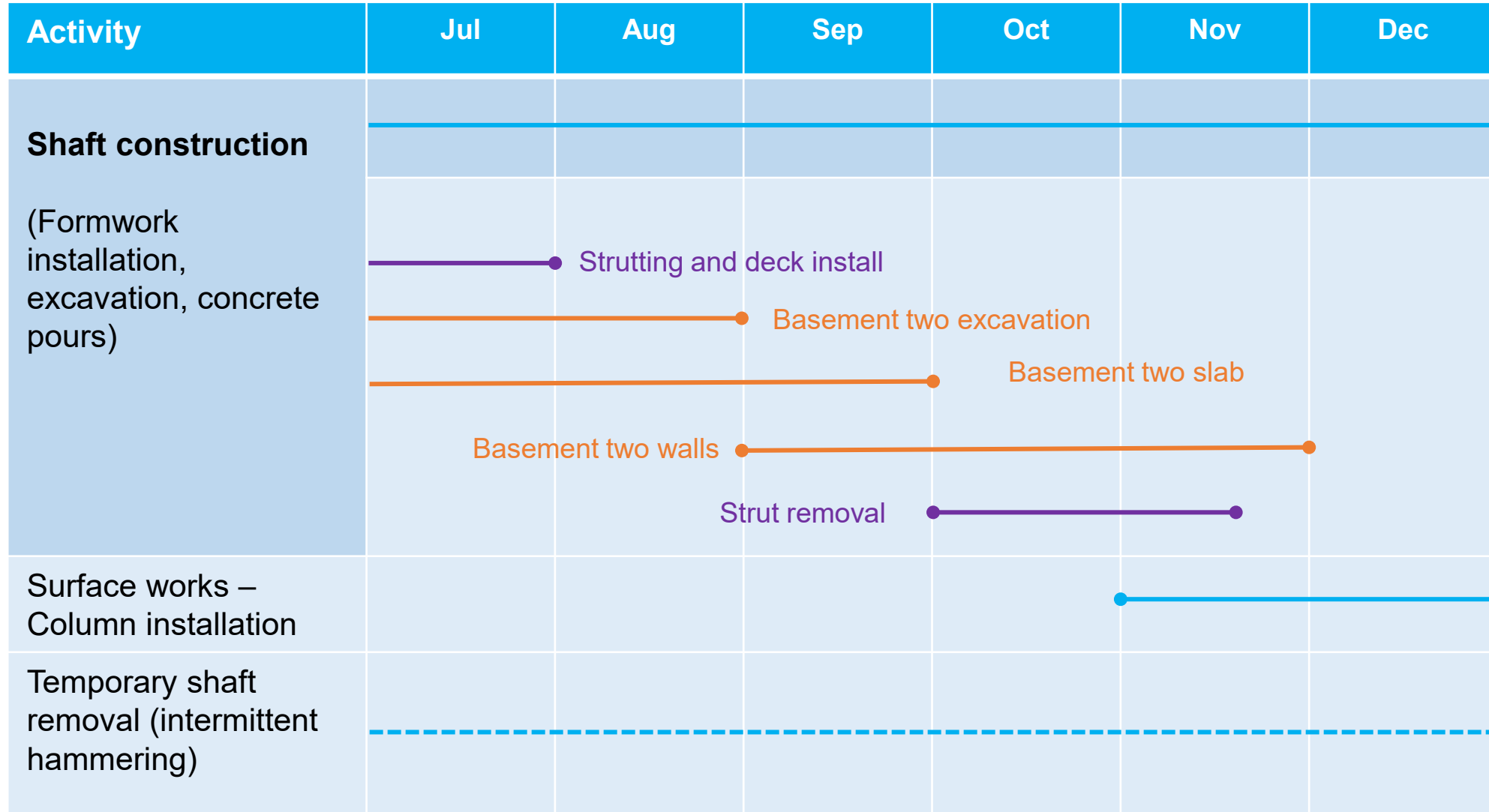
- Monday to Saturdays, 24-hours





## LA TROBE STREET UPDATE

# LA TROBE STREET SITE UPDATE



# • LA TROBE STREET SITE UPDATE



## Shaft construction

(Excavation, excavated material removal, steel fixing, concrete pours and deliveries)

- Monday to Fridays, 7am to 10pm
- Saturdays, 7am to 6pm

## Steel fixing and excavation

- Monday to Fridays, 10pm to 12am

## Concrete finishing works and oversized deliveries

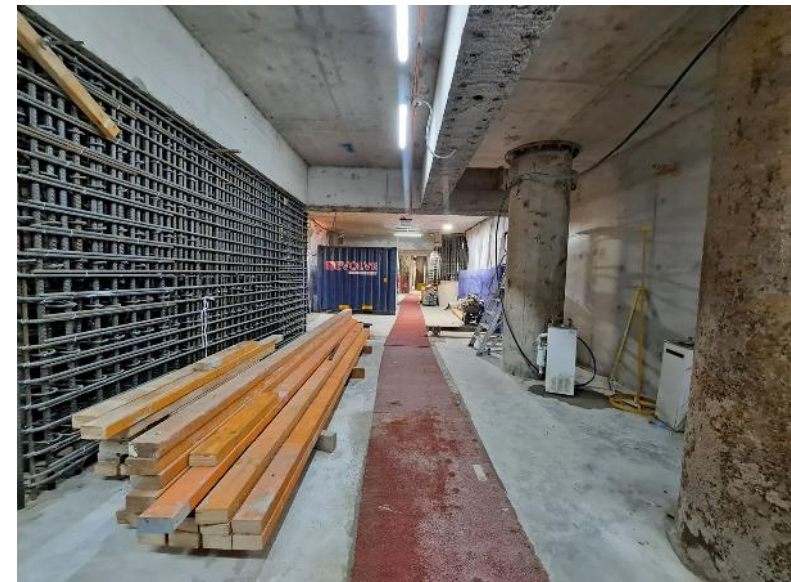
- Monday to Saturdays, 10pm to 7am (as required)

## Swanston Street concrete pump operation

- Monday to Sundays, 24 hours (as required)

## Little La Trobe Street concrete pump operation

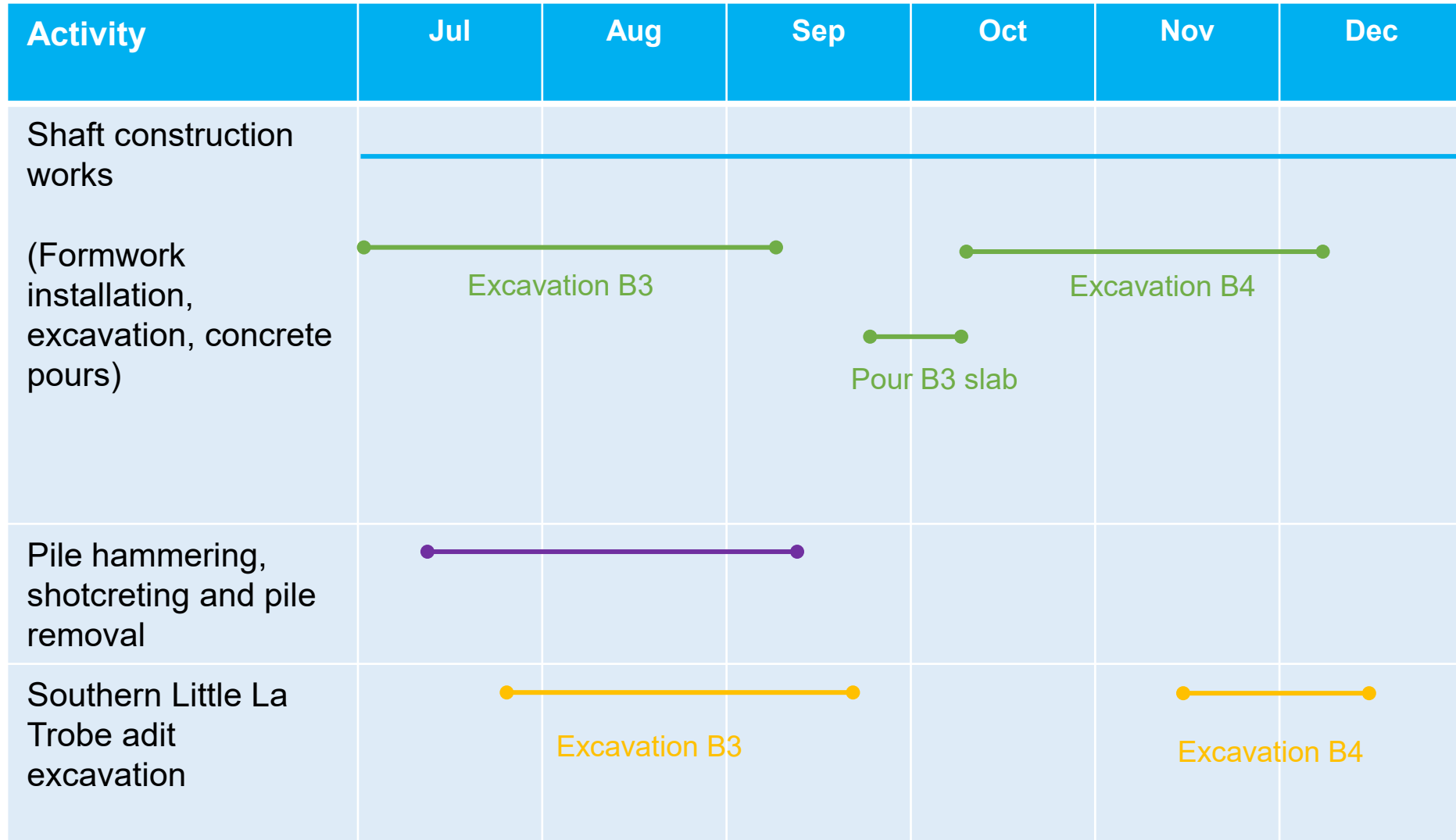
- Monday to Saturdays, 7am to 6pm





**LITTLE LA TROBE STREET UPDATE**

# LITTLE LA TROBE STREET SITE UPDATE



## Shaft construction works

- Monday to Fridays, 7am to 10pm
- Saturdays, 7am to 6pm

## Pile hammering

- Monday to Fridays, 8am to 4pm

## Concrete finishing works and oversized deliveries

- Monday to Fridays, 10pm to 7am (as required)

## Southern Little La Trobe adit excavation

- Monday to Fridays, 24h from late-July





# QUESTIONS