

LEVEL
CROSSING
REMOVAL
PROJECT

FERGUSON STREET, WILLIAMSTOWN

KIDS ACTIVITY BOOK



levelcrossings.vic.gov.au

Authorised and published by the Victorian
Government, 1 Treasury Place, Melbourne



Find the 15 words in this puzzle

R	E	G	G	I	D	M	U	O	P	A	E	W	V	K	O
B	L	E	V	E	L	C	R	O	S	S	I	N	G	T	K
T	B	C	Z	R	L	F	G	D	G	D	Q	A	R	U	M
R	Q	T	Y	K	A	S	D	Y	B	M	W	Y	D	N	A
A	E	T	W	I	L	L	I	A	M	S	T	O	W	N	C
F	E	R	G	U	S	O	N	S	T	R	E	E	T	E	H
F	S	U	G	I	N	C	V	Y	X	K	Z	C	R	L	I
I	I	C	T	Q	Z	S	T	A	T	I	O	N	E	B	N
C	O	K	L	J	W	E	F	T	M	V	I	W	N	T	E
U	D	J	B	O	F	L	I	Y	C	A	D	F	C	W	Z
Q	N	M	U	A	G	E	M	B	R	D	V	Z	H	Q	J
C	O	N	S	T	R	U	C	T	I	O	N	K	F	D	E

Words can be across, down or diagonal.

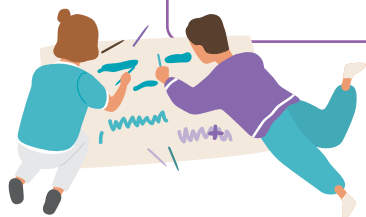
Williamstown
Ferguson Street
Level Crossing
Safety
Truck
Tunnel
Traffic

Digger
Construction
Machine
Bus
Trench
Train
Station

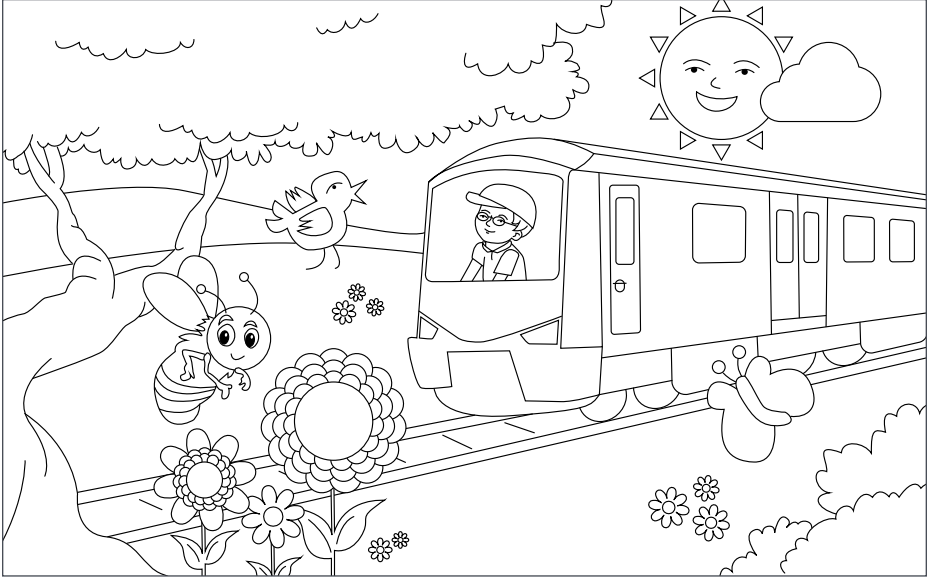
How to play



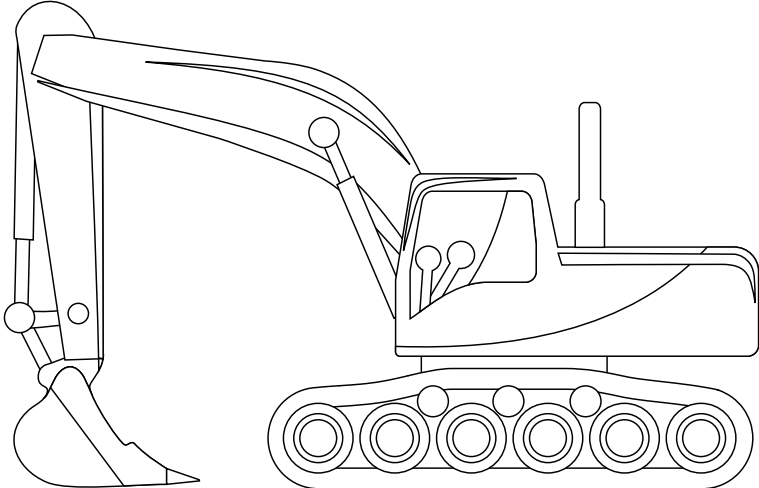
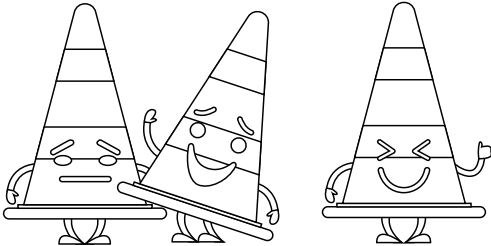
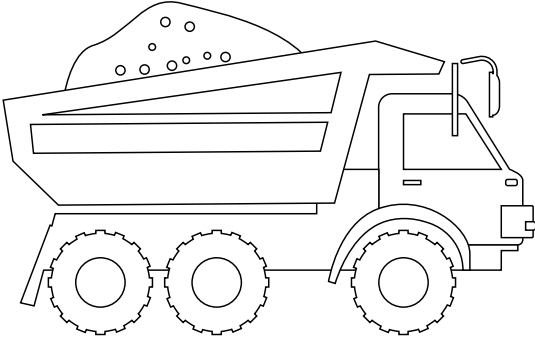
Find all hidden words
in the letter scramble.
Watch out - they might
even be back to front!



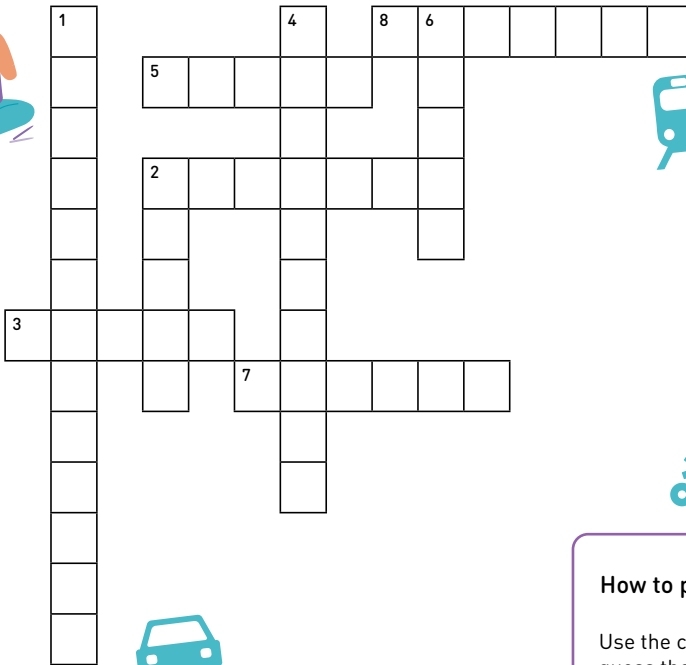
Spot the 10 differences between these pictures



Colour me in!



Crossword



How to play



Use the clues to guess the words in the blank boxes.

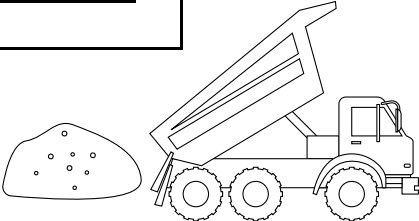
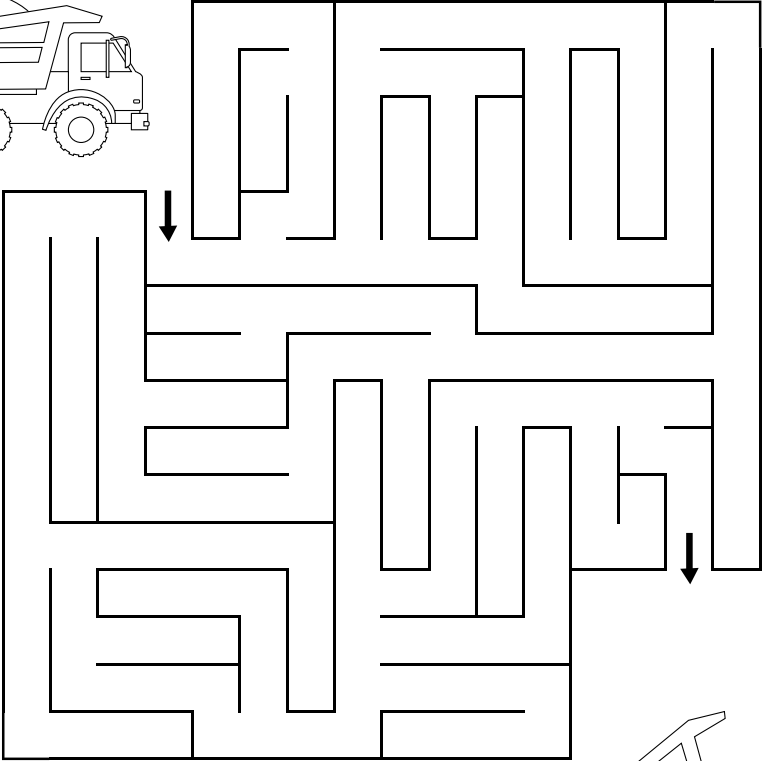
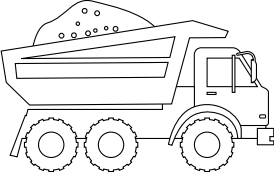
DOWN

1. What will be removed at Ferguson Street?
2. Where is somewhere that you can go in Williamstown on a hot day?
4. What fun activity is there near the North Williamstown station?
6. What is tall and green and will be planted around the new station?
7. Where can you go to see old trains in Newport?

ACROSS

2. What two wheeled vehicle could you ride on the new path?
3. What sort of vehicle carries construction materials?
5. What do trains run on?
8. Where do trains stop?


Help the truck through the maze





contact@levelcrossings.vic.gov.au
1800 105 105

Level Crossing Removal Project
GPO Box 2392, Melbourne VIC 3001

    
[@levelcrossings](https://www.facebook.com/levelcrossings)



Translation service – For languages other than English, please call 9209 0147.

Please contact us if you would like this information in an accessible format.

If you need assistance because of a hearing or speech impairment, please visit relayservice.gov.au